



Full wwPDB X-ray Structure Validation Report ⓘ

Feb 1, 2016 – 06:29 AM GMT

PDB ID : 2XAN
Title : INOSITOL 1,3,4,5,6-PENTAKISPHOSPHATE 2-KINASE FROM A.
THALIANA IN COMPLEX WITH AMP PNP AND IP5
Authors : Gonzalez, B.; Banos-Sanz, J.I.; Villate, M.; Brearley, C.A.; Sanz-Aparicio, J.
Deposited on : 2010-03-31
Resolution : 2.20 Å(reported)

This is a Full wwPDB X-ray Structure Validation Report for a publicly released PDB entry.
We welcome your comments at validation@mail.wwpdb.org
A user guide is available at
<http://wwpdb.org/validation/2016/XrayValidationReportHelp>
with specific help available everywhere you see the ⓘ symbol.

The following versions of software and data (see [references ⓘ](#)) were used in the production of this report:

MolProbity : 4.02b-467
Mogul : 1.7 (RC4), CSD as536be (2015)
Xtriage (Phenix) : 1.9-1692
EDS : rb-20026688
Percentile statistics : 20151230.v01 (using entries in the PDB archive December 30th 2015)
Refmac : 5.8.0135
CCP4 : 6.5.0
Ideal geometry (proteins) : Engh & Huber (2001)
Ideal geometry (DNA, RNA) : Parkinson et al. (1996)
Validation Pipeline (wwPDB-VP) : trunk26865

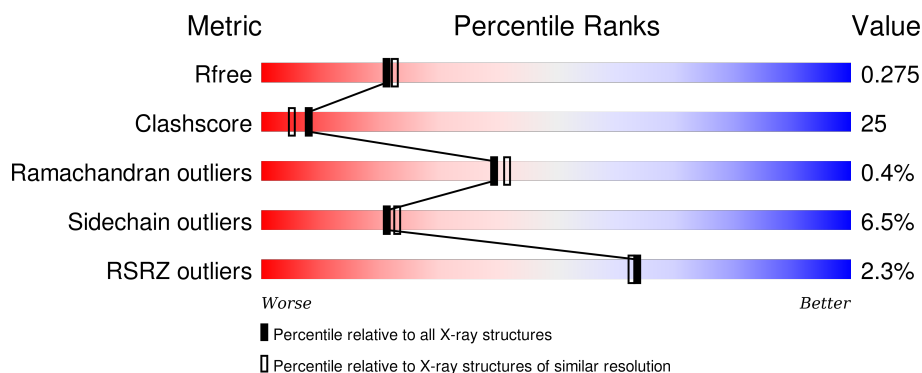
1 Overall quality at a glance

The following experimental techniques were used to determine the structure:

X-RAY DIFFRACTION

The reported resolution of this entry is 2.20 Å.

Percentile scores (ranging between 0-100) for global validation metrics of the entry are shown in the following graphic. The table shows the number of entries on which the scores are based.



Metric	Whole archive (#Entries)	Similar resolution (#Entries, resolution range(Å))
R_{free}	91344	3774 (2.20-2.20)
Clashscore	102246	4477 (2.20-2.20)
Ramachandran outliers	100387	4404 (2.20-2.20)
Sidechain outliers	100360	4405 (2.20-2.20)
RSRZ outliers	91569	3781 (2.20-2.20)

The table below summarises the geometric issues observed across the polymeric chains and their fit to the electron density. The red, orange, yellow and green segments on the lower bar indicate the fraction of residues that contain outliers for ≥ 3 , 2, 1 and 0 types of geometric quality criteria. A grey segment represents the fraction of residues that are not modelled. The numeric value for each fraction is indicated below the corresponding segment, with a dot representing fractions $\leq 5\%$. The upper red bar (where present) indicates the fraction of residues that have poor fit to the electron density. The numeric value is given above the bar.

Mol	Chain	Length	Quality of chain
1	A	451	 2% 64% 25% 8%
1	B	451	 2% 63% 25% 8%

The following table lists non-polymeric compounds, carbohydrate monomers and non-standard residues in protein, DNA, RNA chains that are outliers for geometric or electron-density-fit criteria:

Mol	Type	Chain	Res	Chirality	Geometry	Clashes	Electron density
5	MG	B	1439	-	-	-	X

2 Entry composition

There are 6 unique types of molecules in this entry. The entry contains 6979 atoms, of which 0 are hydrogens and 0 are deuteriums.

In the tables below, the ZeroOcc column contains the number of atoms modelled with zero occupancy, the AltConf column contains the number of residues with at least one atom in alternate conformation and the Trace column contains the number of residues modelled with at most 2 atoms.

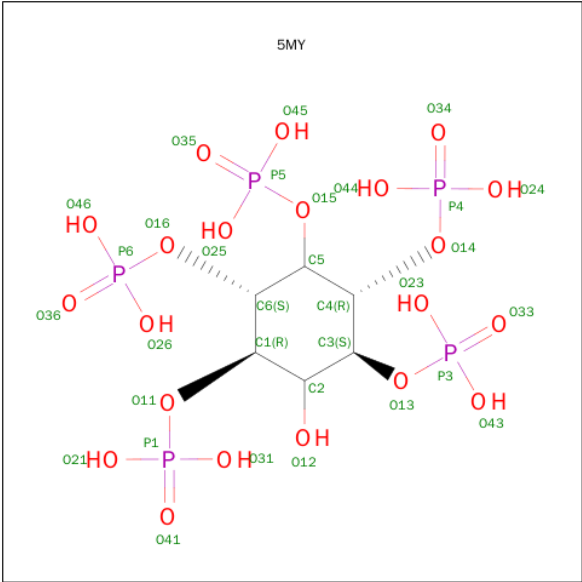
- Molecule 1 is a protein called INOSITOL-PENTAKISPHOSPHATE 2-KINASE.

Mol	Chain	Residues	Atoms					ZeroOcc	AltConf	Trace
1	A	414	Total	C	N	O	S	0	0	0
			3287	2090	554	630	13			
1	B	417	Total	C	N	O	S	0	0	0
			3303	2101	557	632	13			

There are 16 discrepancies between the modelled and reference sequences:

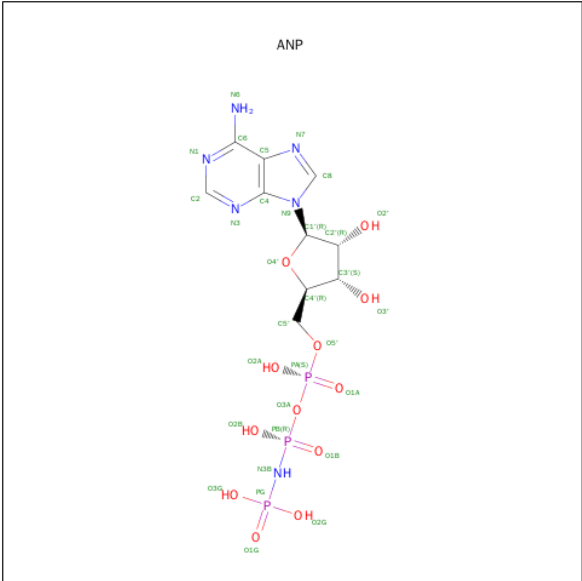
Chain	Residue	Modelled	Actual	Comment	Reference
A	54	SER	ALA	CONFLICT	UNP Q93YN9
A	90	GLN	LYS	CONFLICT	UNP Q93YN9
A	157	THR	SER	SEE REMARK 999	UNP Q93YN9
A	204	ILE	ASN	CONFLICT	UNP Q93YN9
A	224	ARG	SER	CONFLICT	UNP Q93YN9
A	321	CYS	SER	CONFLICT	UNP Q93YN9
A	325	ILE	LEU	CONFLICT	UNP Q93YN9
A	337	ARG	LYS	SEE REMARK 999	UNP Q93YN9
B	54	SER	ALA	CONFLICT	UNP Q93YN9
B	90	GLN	LYS	CONFLICT	UNP Q93YN9
B	157	THR	SER	SEE REMARK 999	UNP Q93YN9
B	204	ILE	ASN	CONFLICT	UNP Q93YN9
B	224	ARG	SER	CONFLICT	UNP Q93YN9
B	321	CYS	SER	CONFLICT	UNP Q93YN9
B	325	ILE	LEU	CONFLICT	UNP Q93YN9
B	337	ARG	LYS	CONFLICT	UNP Q93YN9

- Molecule 2 is MYO-INOSITOL-(1,3,4,5,6)-PENTAKISPHOSPHATE (three-letter code: 5MY) (formula: C₆H₁₇O₂₁P₅).



Mol	Chain	Residues	Atoms				ZeroOcc	AltConf
2	A	1	Total	C	O	P	0	0
			32	6	21	5		
2	B	1	Total	C	O	P	0	0
			32	6	21	5		

- Molecule 3 is PHOSPHOAMINOPHOSPHONIC ACID-ADENYLATE ESTER (three-letter code: ANP) (formula: C₁₀H₁₇N₆O₁₂P₃).



Mol	Chain	Residues	Atoms					ZeroOcc	AltConf
3	A	1	Total	C	N	O	P	0	0
			31	10	6	12	3		

Continued on next page...

Continued from previous page...

Mol	Chain	Residues	Atoms					ZeroOcc	AltConf
3	B	1	Total	C	N	O	P	0	0
			31	10	6	12	3		

- Molecule 4 is ZINC ION (three-letter code: ZN) (formula: Zn).

Mol	Chain	Residues	Atoms		ZeroOcc	AltConf
4	B	1	Total	Zn	0	0
			1	1		
4	A	1	Total	Zn	0	0
			1	1		

- Molecule 5 is MAGNESIUM ION (three-letter code: MG) (formula: Mg).

Mol	Chain	Residues	Atoms		ZeroOcc	AltConf
5	B	1	Total	Mg	0	0
			1	1		
5	A	1	Total	Mg	0	0
			1	1		

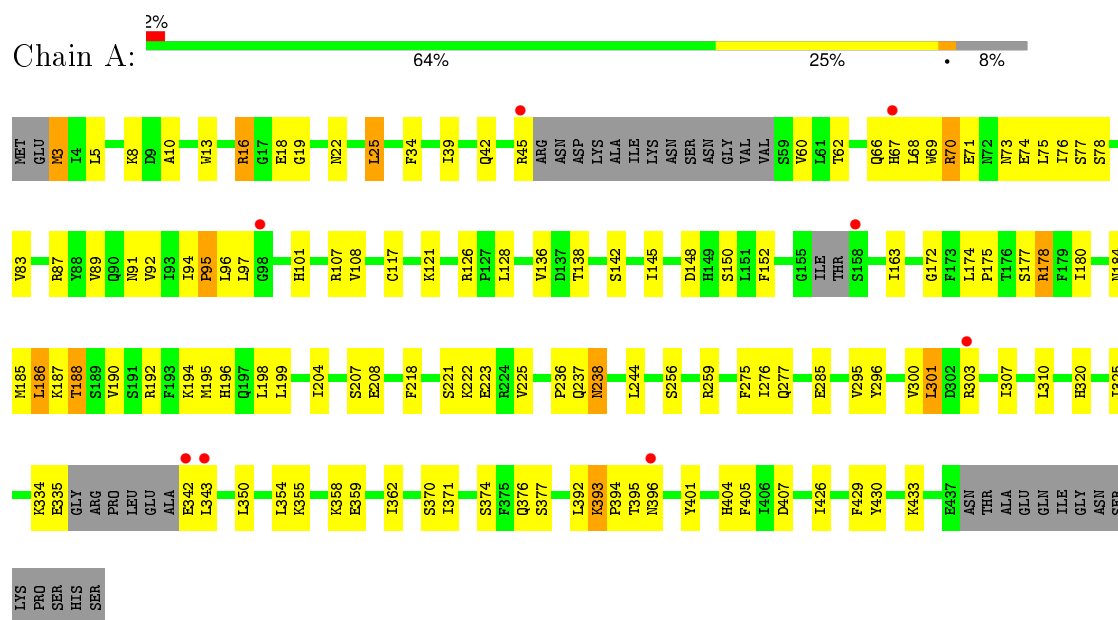
- Molecule 6 is water.

Mol	Chain	Residues	Atoms		ZeroOcc	AltConf
6	A	122	Total	O	0	0
			122	122		
6	B	137	Total	O	0	0
			137	137		

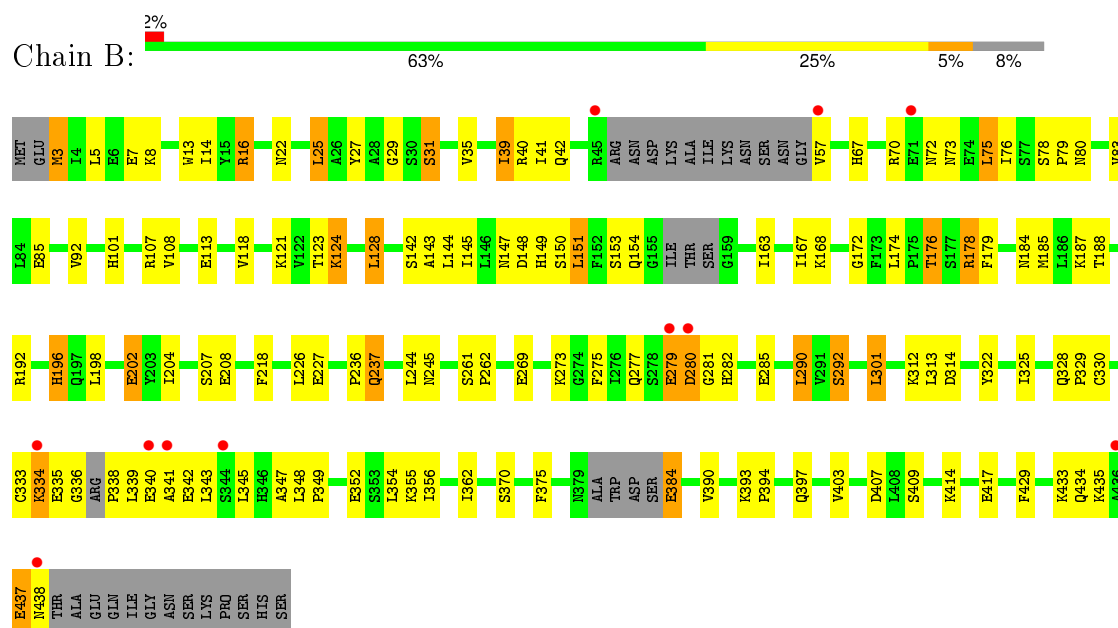
3 Residue-property plots

These plots are drawn for all protein, RNA and DNA chains in the entry. The first graphic for a chain summarises the proportions of errors displayed in the second graphic. The second graphic shows the sequence view annotated by issues in geometry and electron density. Residues are color-coded according to the number of geometric quality criteria for which they contain at least one outlier: green = 0, yellow = 1, orange = 2 and red = 3 or more. A red dot above a residue indicates a poor fit to the electron density ($RSRZ > 2$). Stretches of 2 or more consecutive residues without any outlier are shown as a green connector. Residues present in the sample, but not in the model, are shown in grey.

• Molecule 1: INOSITOL-PENTAKISPHOSPHATE 2-KINASE



• Molecule 1: INOSITOL-PENTAKISPHOSPHATE 2-KINASE



4 Data and refinement statistics

Property	Value	Source
Space group	P 21 21 21	Depositor
Cell constants a, b, c, α , β , γ	57.42Å 113.43Å 140.47Å 90.00° 90.00° 90.00°	Depositor
Resolution (Å)	140.03 – 2.20 70.24 – 2.20	Depositor EDS
% Data completeness (in resolution range)	99.5 (140.03-2.20) 99.5 (70.24-2.20)	Depositor EDS
R_{merge}	0.10	Depositor
R_{sym}	(Not available)	Depositor
$\langle I/\sigma(I) \rangle$ ¹	3.97 (at 2.20Å)	Xtriage
Refinement program	REFMAC 5.5.0066	Depositor
R, R_{free}	0.224 , 0.277 0.223 , 0.275	Depositor DCC
R_{free} test set	2387 reflections (5.33%)	DCC
Wilson B-factor (Å ²)	27.5	Xtriage
Anisotropy	0.063	Xtriage
Bulk solvent k_{sol} (e/Å ³), B_{sol} (Å ²)	0.35 , 43.9	EDS
Estimated twinning fraction	No twinning to report.	Xtriage
L-test for twinning ²	$\langle L \rangle = 0.49$, $\langle L^2 \rangle = 0.32$	Xtriage
Outliers	1 of 47246 reflections (0.002%)	Xtriage
F_o, F_c correlation	0.93	EDS
Total number of atoms	6979	wwPDB-VP
Average B, all atoms (Å ²)	21.0	wwPDB-VP

Xtriage's analysis on translational NCS is as follows: *The largest off-origin peak in the Patterson function is 16.66% of the height of the origin peak. No significant pseudotranslation is detected.*

¹Intensities estimated from amplitudes.

²Theoretical values of $\langle |L| \rangle$, $\langle L^2 \rangle$ for acentric reflections are 0.5, 0.375 respectively for untwinned datasets, and 0.333, 0.2 for perfectly twinned datasets.

5 Model quality

5.1 Standard geometry

Bond lengths and bond angles in the following residue types are not validated in this section: 5MY, ZN, ANP, MG

The Z score for a bond length (or angle) is the number of standard deviations the observed value is removed from the expected value. A bond length (or angle) with $|Z| > 5$ is considered an outlier worth inspection. RMSZ is the root-mean-square of all Z scores of the bond lengths (or angles).

Mol	Chain	Bond lengths		Bond angles	
		RMSZ	# Z >5	RMSZ	# Z >5
1	A	0.35	0/3348	0.51	0/4513
1	B	0.37	0/3362	0.51	0/4530
All	All	0.36	0/6710	0.51	0/9043

There are no bond length outliers.

There are no bond angle outliers.

There are no chirality outliers.

There are no planarity outliers.

5.2 Too-close contacts

In the following table, the Non-H and H(model) columns list the number of non-hydrogen atoms and hydrogen atoms in the chain respectively. The H(added) column lists the number of hydrogen atoms added and optimized by MolProbity. The Clashes column lists the number of clashes within the asymmetric unit, whereas Symm-Clashes lists symmetry related clashes.

Mol	Chain	Non-H	H(model)	H(added)	Clashes	Symm-Clashes
1	A	3287	0	3289	141	0
1	B	3303	0	3315	193	1
2	A	32	0	7	1	0
2	B	32	0	7	1	0
3	A	31	0	13	3	0
3	B	31	0	13	3	0
4	A	1	0	0	0	0
4	B	1	0	0	0	0
5	A	1	0	0	0	0
5	B	1	0	0	0	0
6	A	122	0	0	11	0

Continued on next page...

Continued from previous page...

Mol	Chain	Non-H	H(model)	H(added)	Clashes	Symm-Clashes
6	B	137	0	0	11	0
All	All	6979	0	6644	330	1

The all-atom clashscore is defined as the number of clashes found per 1000 atoms (including hydrogen atoms). The all-atom clashscore for this structure is 25.

All (330) close contacts within the same asymmetric unit are listed below, sorted by their clash magnitude.

Atom-1	Atom-2	Interatomic distance (Å)	Clash overlap (Å)
1:A:393:LYS:CA	1:A:393:LYS:HE2	1.45	1.39
1:B:185:MET:O	1:B:188:THR:HG22	1.28	1.27
1:A:393:LYS:HA	1:A:393:LYS:CE	1.49	1.24
1:B:384:GLU:N	1:B:384:GLU:OE2	1.70	1.24
6:A:2051:HOH:O	1:B:312:LYS:HE3	1.43	1.18
1:B:290:LEU:CD1	1:B:390:VAL:HG21	1.74	1.15
1:B:14:ILE:HD12	6:B:2005:HOH:O	1.43	1.15
1:B:79:PRO:HD2	1:B:83:VAL:HG11	1.32	1.11
1:B:163:ILE:HD13	1:B:275:PHE:CG	1.86	1.10
1:B:348:LEU:HD12	1:B:349:PRO:CD	1.84	1.06
1:A:178:ARG:HH11	1:A:178:ARG:CG	1.68	1.06
1:B:178:ARG:HG3	1:B:178:ARG:HH11	1.19	1.05
1:A:178:ARG:HH11	1:A:178:ARG:HG3	1.19	1.04
1:B:348:LEU:CD2	1:B:352:GLU:HG2	1.89	1.03
1:B:204:ILE:HG22	1:B:204:ILE:O	1.54	1.03
1:B:290:LEU:HD13	1:B:390:VAL:CG2	1.89	1.01
1:B:178:ARG:CG	1:B:178:ARG:HH11	1.75	1.00
1:B:348:LEU:HD12	1:B:349:PRO:HD3	1.41	0.99
1:B:39:ILE:HD11	1:B:143:ALA:HB1	1.45	0.98
1:B:290:LEU:HD13	1:B:390:VAL:HG21	1.43	0.96
1:B:204:ILE:O	1:B:204:ILE:CG2	2.13	0.95
1:B:384:GLU:OE2	1:B:384:GLU:CA	2.17	0.93
1:B:340:GLU:HA	1:B:340:GLU:OE1	1.67	0.93
1:A:404:HIS:HD2	6:A:2102:HOH:O	1.51	0.92
1:B:124:LYS:HD3	1:B:124:LYS:O	1.68	0.92
1:A:94:ILE:HB	1:A:95:PRO:HD3	1.51	0.91
1:B:279:GLU:O	1:B:281:GLY:N	2.04	0.91
1:A:199:LEU:HD22	1:A:426:ILE:HD13	1.50	0.91
1:B:3:MET:O	1:B:3:MET:HE1	1.70	0.91
1:B:39:ILE:HD12	1:B:41:ILE:HG13	1.54	0.90
1:A:18:GLU:OE1	1:A:126:ARG:HG2	1.72	0.90
1:B:280:ASP:HB3	1:B:282:HIS:HD2	1.37	0.89

Continued on next page...

Continued from previous page...

Atom-1	Atom-2	Interatomic distance (Å)	Clash overlap (Å)
1:B:290:LEU:CD1	1:B:390:VAL:CG2	2.46	0.89
1:A:301:LEU:HD11	1:A:371:ILE:CD1	2.04	0.88
1:B:178:ARG:NH1	1:B:178:ARG:HG3	1.84	0.88
1:B:325:ILE:HD12	1:B:354:LEU:HD23	1.57	0.87
1:B:39:ILE:HD13	1:B:40:ARG:N	1.90	0.87
1:A:204:ILE:HD12	1:B:345:LEU:HD21	1.54	0.87
1:B:290:LEU:HD12	1:B:390:VAL:HG21	1.57	0.85
1:B:163:ILE:CD1	1:B:275:PHE:CG	2.58	0.85
1:B:79:PRO:CD	1:B:83:VAL:HG11	2.06	0.85
1:B:348:LEU:HD12	1:B:349:PRO:HD2	1.58	0.85
1:B:148:ASP:HB3	1:B:151:LEU:HD21	1.59	0.84
1:B:149:HIS:HE1	6:B:2025:HOH:O	1.58	0.84
1:B:13:TRP:O	1:B:121:LYS:HE2	1.77	0.83
1:B:185:MET:O	1:B:188:THR:CG2	2.22	0.83
1:B:184:ASN:O	1:B:187:LYS:HG2	1.78	0.83
1:A:301:LEU:HD11	1:A:371:ILE:HD11	1.60	0.82
1:A:429:PHE:CZ	1:A:433:LYS:HE2	2.13	0.82
1:A:74:GLU:OE1	1:A:74:GLU:N	2.13	0.82
1:A:128:LEU:HD12	1:B:338:PRO:O	1.80	0.82
1:B:348:LEU:HD23	1:B:352:GLU:HG2	1.63	0.80
1:A:204:ILE:HD12	1:B:345:LEU:CD2	2.12	0.80
1:B:348:LEU:CD1	1:B:349:PRO:HD2	2.13	0.79
1:A:301:LEU:CD1	1:A:371:ILE:HD11	2.12	0.79
1:B:148:ASP:HB3	1:B:151:LEU:CD2	2.13	0.78
1:A:275:PHE:HD1	1:A:276:ILE:HD12	1.49	0.78
1:B:39:ILE:HD11	1:B:143:ALA:CB	2.14	0.77
1:B:280:ASP:HB3	1:B:282:HIS:CD2	2.21	0.76
1:B:290:LEU:HD13	1:B:390:VAL:HG23	1.67	0.76
1:A:350:LEU:CD1	1:A:354:LEU:HD11	2.15	0.76
1:A:89:VAL:O	1:A:94:ILE:HG12	1.86	0.76
1:B:78:SER:HB3	1:B:83:VAL:HG13	1.67	0.75
1:A:301:LEU:CD1	1:A:371:ILE:CD1	2.66	0.74
1:A:178:ARG:NH1	1:A:178:ARG:HG3	1.95	0.74
1:B:437:GLU:OE1	1:B:438:ASN:N	2.21	0.74
1:B:163:ILE:HD13	1:B:275:PHE:CD2	2.23	0.73
1:A:25:LEU:N	1:A:25:LEU:HD22	2.04	0.73
1:B:3:MET:C	1:B:3:MET:HE2	2.09	0.73
1:A:204:ILE:CD1	1:B:345:LEU:CD2	2.65	0.73
1:B:348:LEU:CG	1:B:352:GLU:HG2	2.17	0.73
1:B:163:ILE:CD1	1:B:275:PHE:CD1	2.71	0.72
1:A:94:ILE:HB	1:A:95:PRO:CD	2.19	0.72

Continued on next page...

Continued from previous page...

Atom-1	Atom-2	Interatomic distance (Å)	Clash overlap (Å)
1:B:3:MET:O	1:B:3:MET:CE	2.36	0.72
1:B:163:ILE:HD13	1:B:275:PHE:CD1	2.24	0.71
1:A:192:ARG:NH2	6:A:2044:HOH:O	2.22	0.71
1:A:142:SER:HB3	6:A:2013:HOH:O	1.89	0.71
1:A:108:VAL:HG11	1:A:145:ILE:HD11	1.72	0.70
1:A:94:ILE:O	1:A:96:LEU:N	2.25	0.70
1:B:147:ASN:ND2	1:B:154:GLN:OE1	2.24	0.70
1:B:3:MET:C	1:B:3:MET:CE	2.60	0.70
6:A:2051:HOH:O	1:B:312:LYS:CE	2.16	0.69
1:A:128:LEU:CD1	1:B:338:PRO:O	2.41	0.69
1:B:40:ARG:NH2	1:B:85:GLU:OE2	2.26	0.69
1:A:393:LYS:HB2	1:A:394:PRO:CD	2.22	0.68
1:B:348:LEU:HG	1:B:352:GLU:HG2	1.73	0.68
1:B:429:PHE:CZ	1:B:433:LYS:HD2	2.27	0.68
1:A:204:ILE:HD13	1:B:345:LEU:HD23	1.75	0.68
1:B:437:GLU:OE1	1:B:437:GLU:N	2.26	0.68
1:B:348:LEU:CD1	1:B:349:PRO:CD	2.67	0.68
1:B:325:ILE:HD12	1:B:354:LEU:CD2	2.24	0.68
1:A:108:VAL:HB	1:A:145:ILE:HD12	1.76	0.67
1:A:350:LEU:HD13	1:A:354:LEU:CD1	2.24	0.67
1:B:202:GLU:OE2	6:B:2050:HOH:O	2.13	0.67
1:B:79:PRO:HD2	1:B:83:VAL:CG1	2.19	0.66
1:A:238:ASN:H	1:A:238:ASN:HD22	1.43	0.65
1:B:108:VAL:HG11	1:B:145:ILE:CD1	2.26	0.65
1:A:350:LEU:HD13	1:A:354:LEU:HD11	1.78	0.65
1:B:226:LEU:HA	1:B:292:SER:OG	1.96	0.65
1:B:273:LYS:HE2	6:B:2087:HOH:O	1.96	0.64
1:B:178:ARG:CB	1:B:178:ARG:HH11	2.09	0.64
1:A:94:ILE:C	1:A:96:LEU:H	2.00	0.64
1:A:204:ILE:CD1	1:B:345:LEU:HD23	2.27	0.64
1:A:393:LYS:CB	1:A:394:PRO:CD	2.76	0.64
1:A:259:ARG:HG3	6:A:2072:HOH:O	1.97	0.64
1:A:13:TRP:O	1:A:121:LYS:HE2	1.96	0.64
1:B:437:GLU:CA	1:B:437:GLU:OE1	2.46	0.63
1:B:437:GLU:OE1	1:B:437:GLU:C	2.37	0.63
1:A:16:ARG:NH2	1:A:148:ASP:OD1	2.30	0.63
1:B:107:ARG:NH1	1:B:142:SER:OG	2.32	0.63
1:A:3:MET:CE	1:A:3:MET:HA	2.30	0.62
1:B:196:HIS:HD2	6:B:2132:HOH:O	1.81	0.62
1:B:179:PHE:CE2	1:B:341:ALA:HB3	2.33	0.62
1:B:434:GLN:O	1:B:438:ASN:HB3	1.99	0.62

Continued on next page...

Continued from previous page...

Atom-1	Atom-2	Interatomic distance (Å)	Clash overlap (Å)
1:B:92:VAL:HG11	1:B:362:ILE:HD11	1.81	0.62
1:A:276:ILE:N	1:A:276:ILE:HD12	2.15	0.62
1:A:70:ARG:HG2	1:A:71:GLU:N	2.12	0.62
1:A:199:LEU:CD2	1:A:426:ILE:HD13	2.27	0.61
1:B:280:ASP:O	1:B:282:HIS:CD2	2.53	0.61
1:A:67:HIS:HD2	1:A:354:LEU:HD21	1.64	0.61
1:B:179:PHE:HE2	1:B:341:ALA:HB3	1.65	0.61
1:B:179:PHE:CE2	1:B:341:ALA:CB	2.83	0.61
1:B:16:ARG:NH2	1:B:148:ASP:OD1	2.34	0.61
1:B:280:ASP:CB	1:B:282:HIS:HD2	2.13	0.61
1:B:108:VAL:CG1	1:B:145:ILE:HD13	2.31	0.61
1:A:185:MET:O	1:A:188:THR:HB	2.01	0.60
1:A:275:PHE:HD1	1:A:276:ILE:CD1	2.14	0.60
1:A:25:LEU:HD23	1:A:39:ILE:HG23	1.83	0.60
1:B:290:LEU:HD11	1:B:375:PHE:CE2	2.36	0.60
1:B:168:LYS:HA	1:B:370:SER:HB3	1.82	0.60
1:A:259:ARG:CG	6:A:2072:HOH:O	2.50	0.60
1:A:3:MET:HE3	1:A:3:MET:HA	1.84	0.60
1:A:393:LYS:HB2	1:A:394:PRO:HD3	1.83	0.59
1:A:208:GLU:OE1	1:A:259:ARG:NE	2.36	0.59
1:B:176:THR:CG2	1:B:176:THR:O	2.50	0.59
1:A:407:ASP:OD2	3:A:600:ANP:O3G	2.20	0.59
1:B:39:ILE:HD13	1:B:40:ARG:H	1.67	0.59
1:A:101:HIS:HD2	1:A:303:ARG:NH2	2.01	0.58
1:A:74:GLU:O	1:A:87:ARG:HD3	2.03	0.58
1:B:202:GLU:HA	1:B:202:GLU:OE1	2.04	0.58
1:B:192:ARG:NH2	6:B:2048:HOH:O	2.36	0.58
1:A:18:GLU:OE1	1:A:126:ARG:CG	2.47	0.58
1:A:83:VAL:CG2	1:A:107:ARG:NE	2.66	0.58
1:B:279:GLU:C	1:B:281:GLY:H	2.05	0.58
1:A:76:ILE:C	1:A:76:ILE:HD12	2.23	0.58
1:B:39:ILE:HD12	1:B:41:ILE:CG1	2.32	0.58
1:A:108:VAL:HG11	1:A:145:ILE:CD1	2.34	0.58
1:B:244:LEU:C	1:B:244:LEU:HD23	2.24	0.57
1:A:73:ASN:O	1:A:76:ILE:HG13	2.04	0.57
1:A:178:ARG:HH11	1:A:178:ARG:HG2	1.64	0.57
1:B:384:GLU:OE2	1:B:384:GLU:HA	2.03	0.57
1:B:179:PHE:HE2	1:B:341:ALA:CB	2.18	0.57
1:B:237:GLN:HA	1:B:237:GLN:HE21	1.69	0.56
1:B:149:HIS:CE1	6:B:2025:HOH:O	2.42	0.56
1:B:348:LEU:CG	1:B:349:PRO:HD2	2.35	0.56

Continued on next page...

Continued from previous page...

Atom-1	Atom-2	Interatomic distance (Å)	Clash overlap (Å)
1:B:163:ILE:HD12	1:B:275:PHE:CD1	2.40	0.56
1:A:163:ILE:HG13	1:A:275:PHE:CD1	2.40	0.56
1:A:83:VAL:HG22	1:A:107:ARG:NE	2.20	0.56
1:A:395:THR:O	1:A:396:ASN:HB2	2.06	0.55
1:B:340:GLU:OE1	1:B:340:GLU:CA	2.47	0.55
1:A:60:VAL:HG21	1:A:78:SER:O	2.07	0.54
1:B:178:ARG:HB2	1:B:178:ARG:HH11	1.72	0.54
1:A:238:ASN:N	1:A:238:ASN:HD22	2.04	0.54
1:A:194:LYS:HE3	6:A:2115:HOH:O	2.06	0.54
1:B:330:CYS:O	1:B:334:LYS:HG2	2.08	0.54
1:A:393:LYS:CA	1:A:393:LYS:CE	2.33	0.54
1:B:108:VAL:CG1	1:B:145:ILE:CD1	2.86	0.54
1:A:76:ILE:HD12	1:A:77:SER:N	2.23	0.53
1:B:335:GLU:HG3	1:B:335:GLU:O	2.08	0.53
1:A:94:ILE:CB	1:A:95:PRO:CD	2.87	0.53
1:B:290:LEU:HD11	1:B:375:PHE:CD2	2.43	0.53
1:A:22:ASN:HD21	1:A:42:GLN:HG2	1.72	0.53
1:A:178:ARG:CG	1:A:178:ARG:NH1	2.41	0.53
1:B:16:ARG:NH2	1:B:150:SER:OG	2.42	0.53
1:B:167:ILE:O	1:B:370:SER:HB2	2.08	0.52
1:B:144:LEU:HD12	6:B:2020:HOH:O	2.08	0.52
1:B:7:GLU:HG3	1:B:113:GLU:HB3	1.91	0.52
1:B:244:LEU:CD2	1:B:245:ASN:ND2	2.73	0.52
1:B:348:LEU:HG	1:B:349:PRO:HD2	1.92	0.52
1:B:172:GLY:HA3	1:B:218:PHE:CD2	2.45	0.52
1:A:172:GLY:HA3	1:A:218:PHE:CD2	2.44	0.52
1:B:27:TYR:CZ	1:B:29:GLY:HA3	2.45	0.51
1:B:348:LEU:HD21	1:B:352:GLU:HG2	1.87	0.51
1:B:25:LEU:HB2	1:B:39:ILE:HG22	1.92	0.51
1:B:328:GLN:O	1:B:329:PRO:C	2.49	0.51
1:B:40:ARG:NH2	1:B:85:GLU:CD	2.64	0.51
1:B:92:VAL:HG11	1:B:362:ILE:CD1	2.40	0.51
1:A:94:ILE:C	1:A:96:LEU:N	2.59	0.51
1:B:325:ILE:HD11	1:B:354:LEU:HA	1.92	0.51
1:B:167:ILE:O	1:B:370:SER:CB	2.59	0.51
1:B:16:ARG:NH2	1:B:150:SER:HB3	2.25	0.51
1:B:244:LEU:C	1:B:244:LEU:CD2	2.79	0.51
2:B:500:5MY:O43	3:B:600:ANP:O1G	2.29	0.51
1:B:176:THR:HG23	1:B:176:THR:O	2.11	0.51
1:A:62:THR:O	1:A:66:GLN:HG3	2.11	0.51
1:B:57:VAL:HG12	1:B:57:VAL:O	2.11	0.50

Continued on next page...

Continued from previous page...

Atom-1	Atom-2	Interatomic distance (Å)	Clash overlap (Å)
1:B:73:ASN:HA	1:B:76:ILE:HG12	1.92	0.50
1:B:101:HIS:CE1	1:B:403:VAL:HG22	2.46	0.50
1:A:295:VAL:HG13	1:A:301:LEU:HD22	1.93	0.50
1:A:325:ILE:HD11	1:A:354:LEU:HA	1.93	0.50
1:A:198:LEU:HD12	1:A:430:TYR:CD1	2.46	0.50
1:B:333:CYS:O	1:B:335:GLU:N	2.45	0.50
1:B:108:VAL:HG11	1:B:145:ILE:HD11	1.94	0.50
1:A:73:ASN:C	1:A:75:LEU:N	2.64	0.50
1:A:275:PHE:CD1	1:A:276:ILE:HD12	2.38	0.49
1:B:67:HIS:CE1	1:B:70:ARG:HH21	2.30	0.49
1:B:269:GLU:OE2	1:B:281:GLY:HA2	2.12	0.49
1:A:97:LEU:HG	1:A:307:ILE:HD11	1.95	0.49
1:B:80:ASN:O	1:B:83:VAL:HG12	2.12	0.49
1:B:25:LEU:HD21	1:B:118:VAL:HG13	1.94	0.49
1:A:74:GLU:N	1:A:74:GLU:CD	2.65	0.49
1:B:407:ASP:OD2	3:B:600:ANP:O3G	2.31	0.49
1:B:429:PHE:CE2	1:B:433:LYS:HD2	2.48	0.49
1:B:343:LEU:O	1:B:347:ALA:N	2.38	0.48
1:A:19:GLY:HA3	3:A:600:ANP:N3B	2.28	0.48
1:B:163:ILE:CD1	1:B:275:PHE:CB	2.91	0.48
1:A:25:LEU:CD2	1:A:25:LEU:N	2.75	0.48
1:B:179:PHE:CZ	1:B:341:ALA:HB1	2.48	0.48
1:B:3:MET:CA	1:B:3:MET:HE2	2.43	0.48
1:B:198:LEU:HD13	1:B:433:LYS:HD3	1.96	0.48
1:A:300:VAL:HG22	1:A:405:PHE:CZ	2.49	0.48
1:B:336:GLY:O	1:B:338:PRO:N	2.46	0.47
1:B:218:PHE:CE1	1:B:301:LEU:HG	2.48	0.47
1:A:152:PHE:CD1	1:A:376:GLN:HG2	2.50	0.47
1:B:393:LYS:HB3	1:B:394:PRO:HD3	1.97	0.47
3:A:600:ANP:H8	3:A:600:ANP:O5'	2.14	0.47
1:A:73:ASN:C	1:A:75:LEU:H	2.16	0.47
1:B:16:ARG:NH2	1:B:150:SER:CB	2.77	0.47
1:B:179:PHE:CE2	1:B:341:ALA:HB1	2.49	0.47
1:B:184:ASN:O	1:B:187:LYS:CG	2.59	0.47
1:B:435:LYS:HD2	1:B:435:LYS:N	2.30	0.47
1:B:435:LYS:NZ	1:B:438:ASN:ND2	2.63	0.47
1:A:190:VAL:HB	1:A:195:MET:CE	2.45	0.47
1:A:236:PRO:O	1:A:237:GLN:C	2.53	0.47
1:A:45:ARG:NH2	2:A:500:5MY:O33	2.48	0.46
1:B:31:SER:O	1:B:35:VAL:HG23	2.15	0.46
1:A:10:ALA:CB	1:A:117:CYS:SG	3.04	0.46

Continued on next page...

Continued from previous page...

Atom-1	Atom-2	Interatomic distance (Å)	Clash overlap (Å)
1:B:101:HIS:ND1	1:B:403:VAL:CG2	2.79	0.46
1:B:261:SER:HB2	1:B:262:PRO:HD2	1.98	0.46
1:A:429:PHE:CZ	1:A:433:LYS:CE	2.93	0.46
1:A:177:SER:HB3	1:A:180:ILE:HG13	1.98	0.46
1:B:14:ILE:CD1	6:B:2005:HOH:O	2.27	0.46
1:B:403:VAL:HG23	1:B:403:VAL:O	2.14	0.46
1:B:163:ILE:HD11	1:B:275:PHE:HB2	1.98	0.46
1:A:16:ARG:NH2	1:A:150:SER:OG	2.49	0.46
1:B:39:ILE:HD13	1:B:39:ILE:C	2.34	0.46
1:B:148:ASP:HB3	1:B:151:LEU:HD23	1.97	0.45
1:A:67:HIS:NE2	1:A:350:LEU:HD11	2.31	0.45
1:B:227:GLU:HG3	6:B:2063:HOH:O	2.15	0.45
1:A:358:LYS:O	1:A:362:ILE:HG13	2.16	0.45
1:B:25:LEU:HB2	1:B:39:ILE:CG2	2.47	0.45
1:A:101:HIS:HD2	1:A:303:ARG:CZ	2.30	0.45
1:B:16:ARG:HH21	1:B:150:SER:HB3	1.82	0.45
1:A:190:VAL:HB	1:A:195:MET:HE3	1.97	0.45
1:B:290:LEU:HD12	1:B:290:LEU:O	2.17	0.45
1:A:83:VAL:HG22	1:A:107:ARG:HE	1.82	0.45
1:A:184:ASN:O	1:A:187:LYS:HG3	2.16	0.45
1:A:163:ILE:HG13	1:A:275:PHE:CE1	2.52	0.45
1:A:355:LYS:O	1:A:359:GLU:HG3	2.17	0.45
1:A:97:LEU:HG	1:A:307:ILE:CD1	2.48	0.44
1:A:221:SER:O	1:A:225:VAL:HG23	2.17	0.44
1:B:290:LEU:CD1	1:B:375:PHE:CE2	3.01	0.44
1:A:73:ASN:O	1:A:75:LEU:N	2.51	0.44
1:B:236:PRO:O	1:B:237:GLN:C	2.56	0.44
1:A:320:HIS:CE1	1:A:342:GLU:OE1	2.70	0.44
1:B:22:ASN:HD21	1:B:42:GLN:HG2	1.82	0.44
1:B:39:ILE:CD1	1:B:40:ARG:N	2.72	0.44
1:B:340:GLU:OE1	1:B:343:LEU:HD12	2.18	0.44
1:A:91:ASN:O	1:A:95:PRO:HG2	2.18	0.43
1:A:199:LEU:CD2	1:A:426:ILE:CD1	2.96	0.43
1:A:10:ALA:HB3	1:A:117:CYS:SG	2.58	0.43
1:B:352:GLU:O	1:B:355:LYS:HB2	2.18	0.43
3:B:600:ANP:O5'	3:B:600:ANP:H8	2.18	0.43
1:B:313:LEU:O	1:B:314:ASP:HB3	2.18	0.43
1:A:175:PRO:HB2	1:A:180:ILE:HD11	2.00	0.43
1:A:136:VAL:HG23	1:A:138:THR:HG22	2.01	0.43
1:A:186:LEU:HD12	1:A:186:LEU:HA	1.78	0.43
1:B:163:ILE:CD1	1:B:275:PHE:HB2	2.49	0.42

Continued on next page...

Continued from previous page...

Atom-1	Atom-2	Interatomic distance (Å)	Clash overlap (Å)
1:B:72:ASN:O	1:B:75:LEU:HB2	2.19	0.42
1:B:39:ILE:CD1	1:B:39:ILE:C	2.87	0.42
1:B:108:VAL:HG11	1:B:145:ILE:HD13	1.94	0.42
1:A:393:LYS:HB2	1:A:394:PRO:HD2	2.01	0.42
1:B:348:LEU:HG	1:B:352:GLU:CG	2.45	0.42
1:B:339:LEU:O	1:B:342:GLU:HB2	2.20	0.42
1:A:73:ASN:HA	1:A:76:ILE:HG13	2.00	0.42
1:A:222:LYS:HD2	1:A:296:TYR:CE2	2.55	0.42
1:B:79:PRO:CG	1:B:83:VAL:HG11	2.47	0.42
1:A:68:LEU:HD23	1:A:69:TRP:NE1	2.35	0.42
1:A:18:GLU:OE2	1:A:126:ARG:NH1	2.52	0.42
1:B:67:HIS:CE1	1:B:70:ARG:NH2	2.88	0.42
1:B:414:LYS:HG2	1:B:414:LYS:O	2.19	0.42
1:A:285:GLU:CD	6:A:2080:HOH:O	2.57	0.42
1:A:16:ARG:HH22	1:A:148:ASP:CG	2.24	0.41
1:B:168:LYS:CA	1:B:370:SER:HB3	2.50	0.41
1:A:75:LEU:HA	1:A:75:LEU:HD12	1.90	0.41
1:A:334:LYS:O	1:A:335:GLU:C	2.58	0.41
1:B:437:GLU:CD	1:B:437:GLU:N	2.73	0.41
1:B:198:LEU:HA	1:B:198:LEU:HD23	1.81	0.41
1:B:282:HIS:O	1:B:285:GLU:HG2	2.20	0.41
1:A:276:ILE:N	1:A:276:ILE:CD1	2.82	0.41
1:A:238:ASN:ND2	1:A:238:ASN:H	2.12	0.41
1:A:277:GLN:O	1:A:395:THR:HG22	2.20	0.41
1:B:261:SER:HB2	1:B:262:PRO:CD	2.49	0.41
1:A:34:PHE:HE1	1:A:145:ILE:HD13	1.85	0.41
1:A:92:VAL:HA	6:A:2015:HOH:O	2.20	0.41
1:B:322:TYR:CE2	1:B:417:GLU:HG3	2.55	0.41
1:A:350:LEU:HD11	1:A:354:LEU:HD11	1.98	0.41
1:A:108:VAL:CB	1:A:145:ILE:HD12	2.48	0.41
1:B:356:ILE:HG12	1:B:356:ILE:H	1.62	0.41
1:A:370:SER:OG	6:A:2101:HOH:O	2.14	0.41
1:A:393:LYS:CB	1:A:394:PRO:HD3	2.45	0.41
1:A:22:ASN:ND2	1:A:42:GLN:HG2	2.36	0.41
1:A:392:LEU:HA	1:A:392:LEU:HD23	1.94	0.41
1:A:94:ILE:CB	1:A:95:PRO:HD3	2.34	0.41
1:A:196:HIS:CD2	1:A:426:ILE:HD11	2.56	0.41
1:A:374:SER:O	1:A:401:TYR:HA	2.21	0.41
1:A:108:VAL:CG1	1:A:145:ILE:CD1	2.98	0.40
1:A:16:ARG:NH2	1:A:148:ASP:CG	2.74	0.40
1:B:403:VAL:CG2	1:B:403:VAL:O	2.69	0.40

Continued on next page...

Continued from previous page...

Atom-1	Atom-2	Interatomic distance (Å)	Clash overlap (Å)
1:B:329:PRO:HB2	6:B:2105:HOH:O	2.21	0.40
1:B:101:HIS:ND1	1:B:403:VAL:HG22	2.36	0.40
1:A:152:PHE:CG	1:A:376:GLN:HG2	2.56	0.40
1:B:290:LEU:HD12	1:B:290:LEU:C	2.42	0.40
1:B:92:VAL:CG1	1:B:362:ILE:CD1	3.00	0.40
1:A:393:LYS:N	1:A:393:LYS:HE2	2.23	0.40
1:B:348:LEU:HD12	1:B:348:LEU:HA	1.93	0.40
1:B:352:GLU:O	1:B:356:ILE:HG12	2.21	0.40
1:A:429:PHE:HZ	1:A:433:LYS:HE2	1.80	0.40
1:B:128:LEU:HD12	1:B:128:LEU:HA	1.74	0.40
1:B:277:GLN:H	1:B:397:GLN:HE22	1.70	0.40

All (1) symmetry-related close contacts are listed below. The label for Atom-2 includes the symmetry operator and encoded unit-cell translations to be applied.

Atom-1	Atom-2	Interatomic distance (Å)	Clash overlap (Å)
1:B:14:ILE:CD1	1:B:394:PRO:O[4_556]	2.04	0.16

5.3 Torsion angles [i](#)

5.3.1 Protein backbone [i](#)

In the following table, the Percentiles column shows the percent Ramachandran outliers of the chain as a percentile score with respect to all X-ray entries followed by that with respect to entries of similar resolution.

The Analysed column shows the number of residues for which the backbone conformation was analysed, and the total number of residues.

Mol	Chain	Analysed	Favoured	Allowed	Outliers	Percentiles	
1	A	406/451 (90%)	384 (95%)	21 (5%)	1 (0%)	52	59
1	B	407/451 (90%)	390 (96%)	15 (4%)	2 (0%)	34	35
All	All	813/902 (90%)	774 (95%)	36 (4%)	3 (0%)	39	42

All (3) Ramachandran outliers are listed below:

Mol	Chain	Res	Type
1	B	280	ASP
1	B	334	LYS

Continued on next page...

Continued from previous page...

Mol	Chain	Res	Type
1	A	95	PRO

5.3.2 Protein sidechains ⓘ

In the following table, the Percentiles column shows the percent sidechain outliers of the chain as a percentile score with respect to all X-ray entries followed by that with respect to entries of similar resolution.

The Analysed column shows the number of residues for which the sidechain conformation was analysed, and the total number of residues.

Mol	Chain	Analysed	Rotameric	Outliers	Percentiles	
1	A	368/399 (92%)	348 (95%)	20 (5%)	27	31
1	B	370/399 (93%)	342 (92%)	28 (8%)	16	16
All	All	738/798 (92%)	690 (94%)	48 (6%)	21	23

All (48) residues with a non-rotameric sidechain are listed below:

Mol	Chain	Res	Type
1	A	3	MET
1	A	5	LEU
1	A	8	LYS
1	A	16	ARG
1	A	25	LEU
1	A	70	ARG
1	A	174	LEU
1	A	178	ARG
1	A	186	LEU
1	A	188	THR
1	A	207	SER
1	A	223	GLU
1	A	238	ASN
1	A	244	LEU
1	A	256	SER
1	A	301	LEU
1	A	310	LEU
1	A	343	LEU
1	A	377	SER
1	A	393	LYS
1	B	3	MET
1	B	5	LEU

Continued on next page...

Continued from previous page...

Mol	Chain	Res	Type
1	B	8	LYS
1	B	16	ARG
1	B	25	LEU
1	B	31	SER
1	B	39	ILE
1	B	75	LEU
1	B	123	THR
1	B	124	LYS
1	B	128	LEU
1	B	151	LEU
1	B	153	SER
1	B	174	LEU
1	B	176	THR
1	B	178	ARG
1	B	196	HIS
1	B	202	GLU
1	B	207	SER
1	B	208	GLU
1	B	237	GLN
1	B	279	GLU
1	B	290	LEU
1	B	292	SER
1	B	301	LEU
1	B	384	GLU
1	B	409	SER
1	B	437	GLU

Some sidechains can be flipped to improve hydrogen bonding and reduce clashes. All (21) such sidechains are listed below:

Mol	Chain	Res	Type
1	A	22	ASN
1	A	66	GLN
1	A	101	HIS
1	A	147	ASN
1	A	149	HIS
1	A	238	ASN
1	A	404	HIS
1	B	22	ASN
1	B	67	HIS
1	B	72	ASN
1	B	125	GLN
1	B	147	ASN

Continued on next page...

Continued from previous page...

Mol	Chain	Res	Type
1	B	149	HIS
1	B	154	GLN
1	B	196	HIS
1	B	237	GLN
1	B	282	HIS
1	B	376	GLN
1	B	397	GLN
1	B	404	HIS
1	B	438	ASN

5.3.3 RNA [i](#)

There are no RNA molecules in this entry.

5.4 Non-standard residues in protein, DNA, RNA chains [i](#)

There are no non-standard protein/DNA/RNA residues in this entry.

5.5 Carbohydrates [i](#)

There are no carbohydrates in this entry.

5.6 Ligand geometry [i](#)

Of 8 ligands modelled in this entry, 4 are monoatomic - leaving 4 for Mogul analysis.

In the following table, the Counts columns list the number of bonds (or angles) for which Mogul statistics could be retrieved, the number of bonds (or angles) that are observed in the model and the number of bonds (or angles) that are defined in the chemical component dictionary. The Link column lists molecule types, if any, to which the group is linked. The Z score for a bond length (or angle) is the number of standard deviations the observed value is removed from the expected value. A bond length (or angle) with $|Z| > 2$ is considered an outlier worth inspection. RMSZ is the root-mean-square of all Z scores of the bond lengths (or angles).

Mol	Type	Chain	Res	Link	Bond lengths			Bond angles		
					Counts	RMSZ	$\# Z > 2$	Counts	RMSZ	$\# Z > 2$
2	5MY	A	500	-	32,32,32	0.64	0	43,53,53	1.00	2 (4%)
3	ANP	A	600	5	27,33,33	2.15	6 (22%)	30,52,52	2.19	7 (23%)
2	5MY	B	500	-	32,32,32	0.60	0	43,53,53	1.07	3 (6%)
3	ANP	B	600	5	27,33,33	2.27	8 (29%)	30,52,52	2.25	7 (23%)

In the following table, the Chirals column lists the number of chiral outliers, the number of chiral centers analysed, the number of these observed in the model and the number defined in the chemical component dictionary. Similar counts are reported in the Torsion and Rings columns. '-' means no outliers of that kind were identified.

Mol	Type	Chain	Res	Link	Chirals	Torsions	Rings
2	5MY	A	500	-	-	0/25/49/49	0/1/1/1
3	ANP	A	600	5	-	0/12/38/38	0/3/3/3
2	5MY	B	500	-	-	0/25/49/49	0/1/1/1
3	ANP	B	600	5	-	0/12/38/38	0/3/3/3

All (14) bond length outliers are listed below:

Mol	Chain	Res	Type	Atoms	Z	Observed(Å)	Ideal(Å)
3	B	600	ANP	PB-O2B	-2.18	1.50	1.56
3	A	600	ANP	PB-O2B	-2.13	1.50	1.56
3	B	600	ANP	PG-O2G	-2.13	1.50	1.56
3	B	600	ANP	PB-O3A	2.67	1.62	1.59
3	A	600	ANP	C5-C4	2.82	1.46	1.40
3	B	600	ANP	C5-C4	2.93	1.47	1.40
3	A	600	ANP	PG-N3B	4.35	1.74	1.63
3	B	600	ANP	PB-O1B	4.43	1.51	1.46
3	A	600	ANP	PB-N3B	4.61	1.75	1.63
3	B	600	ANP	PG-N3B	4.65	1.75	1.63
3	A	600	ANP	PB-O1B	4.66	1.51	1.46
3	B	600	ANP	PB-N3B	4.94	1.76	1.63
3	A	600	ANP	PG-O1G	5.70	1.52	1.46
3	B	600	ANP	PG-O1G	6.02	1.53	1.46

All (19) bond angle outliers are listed below:

Mol	Chain	Res	Type	Atoms	Z	Observed(°)	Ideal(°)
3	B	600	ANP	N3-C2-N1	-7.44	123.20	128.89
3	A	600	ANP	N3-C2-N1	-7.16	123.41	128.89
3	B	600	ANP	O1G-PG-N3B	-5.08	104.11	111.90
3	B	600	ANP	C2'-C1'-N9	-4.39	107.58	114.29
3	A	600	ANP	C2'-C1'-N9	-4.13	107.98	114.29
3	A	600	ANP	O1G-PG-N3B	-3.99	105.78	111.90
3	A	600	ANP	PA-O3A-PB	-3.48	121.00	132.67
3	A	600	ANP	C4-C5-N7	-3.09	106.64	109.48
3	B	600	ANP	C4-C5-N7	-3.06	106.67	109.48
3	B	600	ANP	PA-O3A-PB	-3.03	122.50	132.67
3	A	600	ANP	C1'-N9-C4	-2.09	123.79	126.94
2	B	500	5MY	O43-P3-O23	2.02	115.05	107.38

Continued on next page...

Continued from previous page...

Mol	Chain	Res	Type	Atoms	Z	Observed(°)	Ideal(°)
3	B	600	ANP	C2-N1-C6	2.07	122.46	118.77
2	A	500	5MY	O46-P6-O26	2.07	115.25	107.38
2	B	500	5MY	O45-P5-O25	2.11	115.40	107.38
2	A	500	5MY	O43-P3-O23	2.36	116.37	107.38
2	B	500	5MY	O46-P6-O26	2.45	116.72	107.38
3	B	600	ANP	O2B-PB-O1B	4.05	118.45	110.00
3	A	600	ANP	O2B-PB-O1B	4.17	118.71	110.00

There are no chirality outliers.

There are no torsion outliers.

There are no ring outliers.

4 monomers are involved in 7 short contacts:

Mol	Chain	Res	Type	Clashes	Symm-Clashes
2	A	500	5MY	1	0
3	A	600	ANP	3	0
2	B	500	5MY	1	0
3	B	600	ANP	3	0

5.7 Other polymers [i](#)

There are no such residues in this entry.

5.8 Polymer linkage issues [i](#)

There are no chain breaks in this entry.

6 Fit of model and data [i](#)

6.1 Protein, DNA and RNA chains [i](#)

In the following table, the column labelled ‘#RSRZ> 2’ contains the number (and percentage) of RSRZ outliers, followed by percent RSRZ outliers for the chain as percentile scores relative to all X-ray entries and entries of similar resolution. The OWAB column contains the minimum, median, 95th percentile and maximum values of the occupancy-weighted average B-factor per residue. The column labelled ‘Q< 0.9’ lists the number of (and percentage) of residues with an average occupancy less than 0.9.

Mol	Chain	Analysed	<RSRZ>	#RSRZ>2	OWAB(Å ²)	Q<0.9
1	A	414/451 (91%)	-0.15	8 (1%) 70 68	12, 20, 35, 51	0
1	B	417/451 (92%)	-0.03	11 (2%) 59 58	11, 19, 35, 58	0
All	All	831/902 (92%)	-0.09	19 (2%) 64 63	11, 20, 35, 58	0

All (19) RSRZ outliers are listed below:

Mol	Chain	Res	Type	RSRZ
1	A	343	LEU	5.5
1	B	436	ALA	5.1
1	B	344	SER	3.8
1	A	342	GLU	3.6
1	B	341	ALA	3.6
1	B	57	VAL	3.4
1	B	340	GLU	3.3
1	A	67	HIS	2.9
1	B	438	ASN	2.8
1	A	158	SER	2.6
1	B	280	ASP	2.5
1	A	98	GLY	2.5
1	B	334	LYS	2.3
1	A	396	ASN	2.3
1	B	45	ARG	2.1
1	B	279	GLU	2.1
1	B	71	GLU	2.1
1	A	303	ARG	2.0
1	A	45	ARG	2.0

6.2 Non-standard residues in protein, DNA, RNA chains [i](#)

There are no non-standard protein/DNA/RNA residues in this entry.

6.3 Carbohydrates [i](#)

There are no carbohydrates in this entry.

6.4 Ligands [i](#)

In the following table, the Atoms column lists the number of modelled atoms in the group and the number defined in the chemical component dictionary. LLDF column lists the quality of electron density of the group with respect to its neighbouring residues in protein, DNA or RNA chains. The B-factors column lists the minimum, median, 95th percentile and maximum values of B factors of atoms in the group. The column labelled 'Q< 0.9' lists the number of atoms with occupancy less than 0.9.

Mol	Type	Chain	Res	Atoms	RSCC	RSR	LLDF	B-factors(\AA^2)	Q<0.9
5	MG	B	1439	1/1	0.95	0.16	4.02	41,41,41,41	0
5	MG	A	1438	1/1	0.85	0.10	0.08	31,31,31,31	0
3	ANP	A	600	31/31	0.97	0.10	-0.29	16,18,25,26	0
4	ZN	A	700	1/1	0.99	0.11	-0.46	22,22,22,22	0
2	5MY	B	500	32/32	0.99	0.10	-0.48	13,16,22,23	0
2	5MY	A	500	32/32	0.98	0.10	-0.57	13,18,23,24	0
3	ANP	B	600	31/31	0.97	0.10	-0.63	14,18,25,26	0
4	ZN	B	700	1/1	0.87	0.10	-	43,43,43,43	0

6.5 Other polymers [i](#)

There are no such residues in this entry.