



Full wwPDB X-ray Structure Validation Report ⓘ

Feb 1, 2016 – 10:21 PM GMT

PDB ID : 4XIY
Title : Crystal structure of ketol-acid reductoisomerase from Azotobacter
Authors : Spatzal, T.; Cahn, J.K.B.; Wiig, J.A.; Einsle, O.; Hu, Y.; Ribbe, M.W.; Arnold, F.H.
Deposited on : 2015-01-08
Resolution : 2.50 Å(reported)

This is a Full wwPDB X-ray Structure Validation Report for a publicly released PDB entry.
We welcome your comments at validation@mail.wwpdb.org
A user guide is available at
<http://wwpdb.org/validation/2016/XrayValidationReportHelp>
with specific help available everywhere you see the ⓘ symbol.

The following versions of software and data (see [references ⓘ](#)) were used in the production of this report:

MolProbity : 4.02b-467
Mogul : 1.7 (RC4), CSD as536be (2015)
Xtriage (Phenix) : 1.9-1692
EDS : rb-20026688
Percentile statistics : 20151230.v01 (using entries in the PDB archive December 30th 2015)
Refmac : 5.8.0135
CCP4 : 6.5.0
Ideal geometry (proteins) : Engh & Huber (2001)
Ideal geometry (DNA, RNA) : Parkinson et al. (1996)
Validation Pipeline (wwPDB-VP) : trunk26865

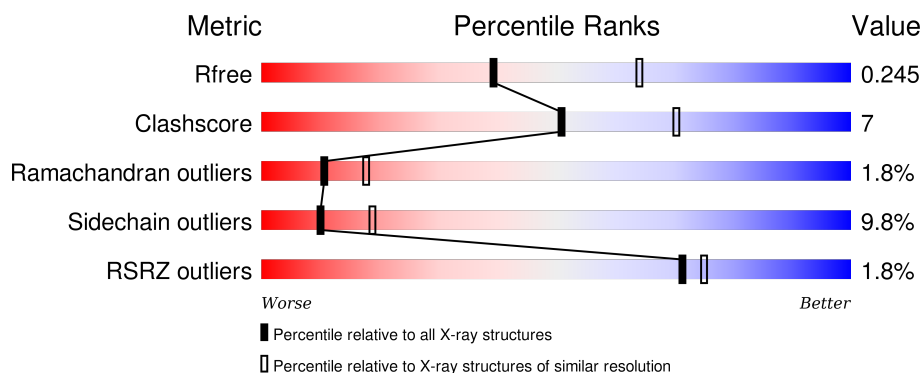
1 Overall quality at a glance ⓘ

The following experimental techniques were used to determine the structure:

X-RAY DIFFRACTION

The reported resolution of this entry is 2.50 Å.

Percentile scores (ranging between 0-100) for global validation metrics of the entry are shown in the following graphic. The table shows the number of entries on which the scores are based.



Metric	Whole archive (#Entries)	Similar resolution (#Entries, resolution range(Å))
R_{free}	91344	3553 (2.50-2.50)
Clashscore	102246	4242 (2.50-2.50)
Ramachandran outliers	100387	4156 (2.50-2.50)
Sidechain outliers	100360	4158 (2.50-2.50)
RSRZ outliers	91569	3562 (2.50-2.50)

The table below summarises the geometric issues observed across the polymeric chains and their fit to the electron density. The red, orange, yellow and green segments on the lower bar indicate the fraction of residues that contain outliers for ≥ 3 , 2, 1 and 0 types of geometric quality criteria. A grey segment represents the fraction of residues that are not modelled. The numeric value for each fraction is indicated below the corresponding segment, with a dot representing fractions $\leq 5\%$. The upper red bar (where present) indicates the fraction of residues that have poor fit to the electron density. The numeric value is given above the bar.

Mol	Chain	Length	Quality of chain
1	A	338	<div> <div>5%</div> <div>83% 11% . .</div> </div>
1	B	338	<div> <div>5%</div> <div>60% 24% 10% . .</div> </div>
1	C	338	<div> <div>81% 13% . .</div> </div>
1	D	338	<div> <div>%</div> <div>82% 12% . .</div> </div>

The following table lists non-polymeric compounds, carbohydrate monomers and non-standard

residues in protein, DNA, RNA chains that are outliers for geometric or electron-density-fit criteria:

Mol	Type	Chain	Res	Chirality	Geometry	Clashes	Electron density
4	PGE	A	403	-	-	-	X
5	PEG	C	403	-	-	-	X
6	PG4	D	403	-	-	-	X

2 Entry composition

There are 7 unique types of molecules in this entry. The entry contains 10099 atoms, of which 0 are hydrogens and 0 are deuteriums.

In the tables below, the ZeroOcc column contains the number of atoms modelled with zero occupancy, the AltConf column contains the number of residues with at least one atom in alternate conformation and the Trace column contains the number of residues modelled with at most 2 atoms.

- Molecule 1 is a protein called Ketol-acid reductoisomerase.

Mol	Chain	Residues	Atoms					ZeroOcc	AltConf	Trace
1	A	328	Total	C	N	O	S	0	3	0
			2507	1581	428	480	18			
1	B	328	Total	C	N	O	S	0	4	0
			2507	1581	425	482	19			
1	C	328	Total	C	N	O	S	0	2	0
			2503	1580	426	480	17			
1	D	328	Total	C	N	O	S	0	1	0
			2494	1573	424	479	18			

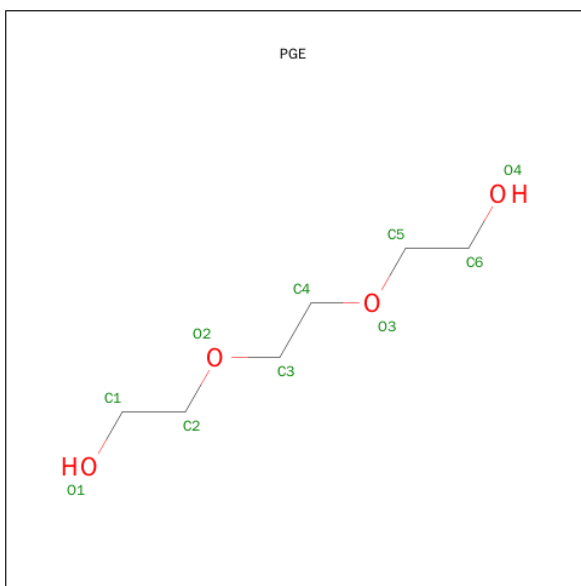
- Molecule 2 is MAGNESIUM ION (three-letter code: MG) (formula: Mg).

Mol	Chain	Residues	Atoms		ZeroOcc	AltConf
2	B	1	Total	Mg	0	0
			1	1		
2	A	1	Total	Mg	0	0
			1	1		
2	D	1	Total	Mg	0	0
			1	1		
2	C	1	Total	Mg	0	0
			1	1		

- Molecule 3 is FE (III) ION (three-letter code: FE) (formula: Fe).

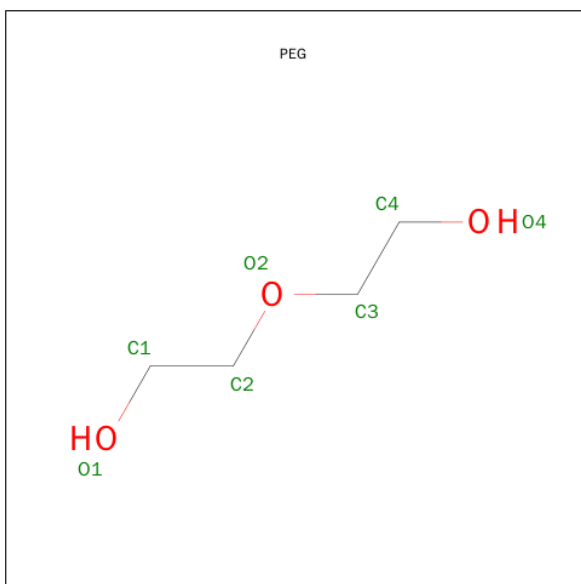
Mol	Chain	Residues	Atoms		ZeroOcc	AltConf
3	B	1	Total	Fe	0	0
			1	1		
3	A	1	Total	Fe	0	0
			1	1		
3	D	1	Total	Fe	0	0
			1	1		
3	C	1	Total	Fe	0	0
			1	1		

- Molecule 4 is TRIETHYLENE GLYCOL (three-letter code: PGE) (formula: $C_6H_{14}O_4$).



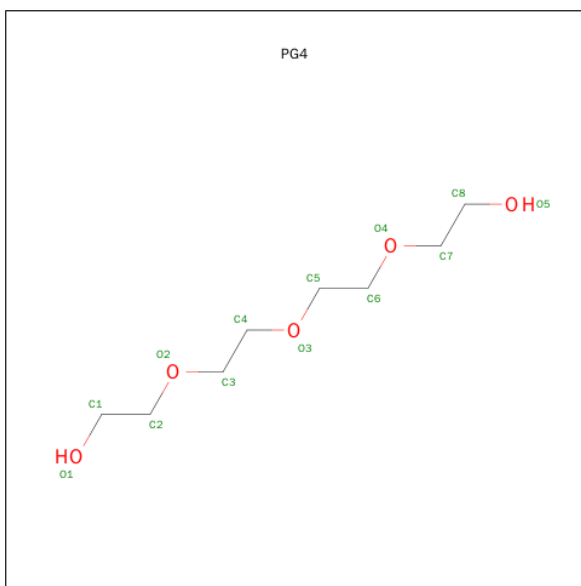
Mol	Chain	Residues	Atoms			ZeroOcc	AltConf
4	A	1	Total	C	O	0	0
			10	6	4		
4	B	1	Total	C	O	0	0
			10	6	4		

- Molecule 5 is DI(HYDROXYETHYL)ETHER (three-letter code: PEG) (formula: $C_4H_{10}O_3$).



Mol	Chain	Residues	Atoms			ZeroOcc	AltConf
5	C	1	Total	C	O	0	0
			7	4	3		

- Molecule 6 is TETRAETHYLENE GLYCOL (three-letter code: PG4) (formula: C₈H₁₈O₅).



Mol	Chain	Residues	Atoms			ZeroOcc	AltConf
6	D	1	Total	C	O	0	0
			13	8	5		

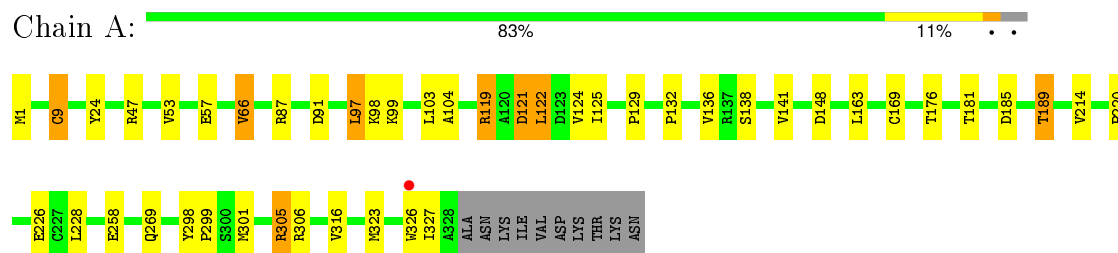
- Molecule 7 is water.

Mol	Chain	Residues	Atoms		ZeroOcc	AltConf
7	A	9	Total	O	0	0
			9	9		
7	B	12	Total	O	0	0
			12	12		
7	C	7	Total	O	0	0
			7	7		
7	D	12	Total	O	0	0
			12	12		

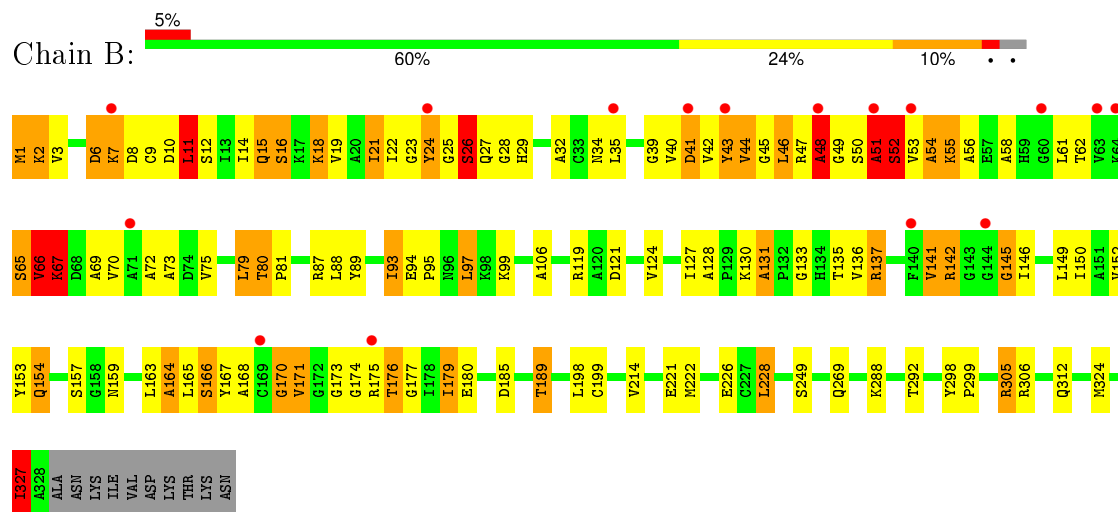
3 Residue-property plots

These plots are drawn for all protein, RNA and DNA chains in the entry. The first graphic for a chain summarises the proportions of errors displayed in the second graphic. The second graphic shows the sequence view annotated by issues in geometry and electron density. Residues are color-coded according to the number of geometric quality criteria for which they contain at least one outlier: green = 0, yellow = 1, orange = 2 and red = 3 or more. A red dot above a residue indicates a poor fit to the electron density ($RSRZ > 2$). Stretches of 2 or more consecutive residues without any outlier are shown as a green connector. Residues present in the sample, but not in the model, are shown in grey.

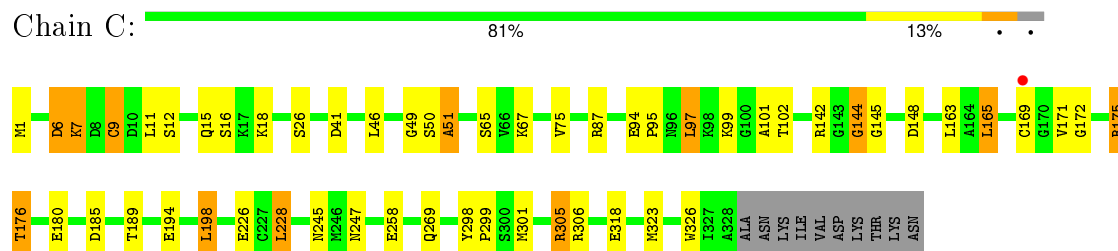
- Molecule 1: Ketol-acid reductoisomerase



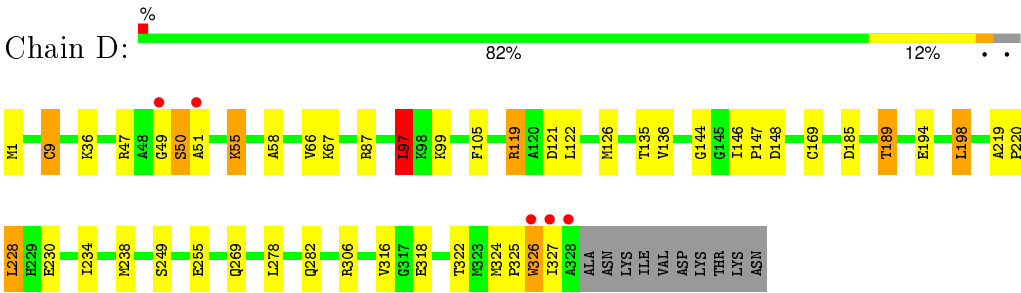
- Molecule 1: Ketol-acid reductoisomerase



- Molecule 1: Ketol-acid reductoisomerase



- Molecule 1: Ketol-acid reductoisomerase



4 Data and refinement statistics

Property	Value	Source
Space group	P 21 3	Depositor
Cell constants a, b, c, α , β , γ	185.05Å 185.05Å 185.05Å 90.00° 90.00° 90.00°	Depositor
Resolution (Å)	55.79 – 2.50 55.79 – 2.50	Depositor EDS
% Data completeness (in resolution range)	99.2 (55.79-2.50) 99.2 (55.79-2.50)	Depositor EDS
R_{merge}	0.09	Depositor
R_{sym}	(Not available)	Depositor
$\langle I/\sigma(I) \rangle$ ¹	2.40 (at 2.51Å)	Xtriage
Refinement program	REFMAC 5.8.0069	Depositor
R, R_{free}	0.194 , 0.244 0.199 , 0.245	Depositor DCC
R_{free} test set	3656 reflections (5.32%)	DCC
Wilson B-factor (Å ²)	39.1	Xtriage
Anisotropy	0.000	Xtriage
Bulk solvent k_{sol} (e/Å ³), B_{sol} (Å ²)	0.30 , 25.2	EDS
Estimated twinning fraction	0.029 for l,-k,h	Xtriage
L-test for twinning ²	$\langle L \rangle = 0.49$, $\langle L^2 \rangle = 0.32$	Xtriage
Outliers	0 of 72339 reflections	Xtriage
F_o, F_c correlation	0.94	EDS
Total number of atoms	10099	wwPDB-VP
Average B, all atoms (Å ²)	47.0	wwPDB-VP

Xtriage's analysis on translational NCS is as follows: *The largest off-origin peak in the Patterson function is 1.84% of the height of the origin peak. No significant pseudotranslation is detected.*

¹Intensities estimated from amplitudes.

²Theoretical values of $\langle |L| \rangle$, $\langle L^2 \rangle$ for acentric reflections are 0.5, 0.375 respectively for untwinned datasets, and 0.333, 0.2 for perfectly twinned datasets.

5 Model quality [i](#)

5.1 Standard geometry [i](#)

Bond lengths and bond angles in the following residue types are not validated in this section: PEG, MG, PGE, PG4, FE

The Z score for a bond length (or angle) is the number of standard deviations the observed value is removed from the expected value. A bond length (or angle) with $|Z| > 5$ is considered an outlier worth inspection. RMSZ is the root-mean-square of all Z scores of the bond lengths (or angles).

Mol	Chain	Bond lengths		Bond angles	
		RMSZ	# $ Z > 5$	RMSZ	# $ Z > 5$
1	A	0.78	0/2561	0.88	5/3461 (0.1%)
1	B	0.82	1/2564 (0.0%)	0.88	2/3466 (0.1%)
1	C	0.75	0/2554	0.84	3/3451 (0.1%)
1	D	0.76	0/2542	0.89	5/3436 (0.1%)
All	All	0.78	1/10221 (0.0%)	0.87	15/13814 (0.1%)

Chiral center outliers are detected by calculating the chiral volume of a chiral center and verifying if the center is modelled as a planar moiety or with the opposite hand. A planarity outlier is detected by checking planarity of atoms in a peptide group, atoms in a mainchain group or atoms of a sidechain that are expected to be planar.

Mol	Chain	#Chirality outliers	#Planarity outliers
1	A	0	2
1	B	0	19
1	C	0	4
1	D	0	3
All	All	0	28

All (1) bond length outliers are listed below:

Mol	Chain	Res	Type	Atoms	Z	Observed(Å)	Ideal(Å)
1	B	221	GLU	CD-OE2	6.26	1.32	1.25

All (15) bond angle outliers are listed below:

Mol	Chain	Res	Type	Atoms	Z	Observed(°)	Ideal(°)
1	D	306	ARG	NE-CZ-NH2	-8.75	115.92	120.30
1	D	306	ARG	NE-CZ-NH1	8.50	124.55	120.30
1	C	306	ARG	NE-CZ-NH2	-8.12	116.24	120.30
1	A	119	ARG	NE-CZ-NH2	-7.73	116.44	120.30

Continued on next page...

Continued from previous page...

Mol	Chain	Res	Type	Atoms	Z	Observed(°)	Ideal(°)
1	D	9	CYS	CA-CB-SG	7.18	126.93	114.00
1	C	306	ARG	NE-CZ-NH1	7.15	123.87	120.30
1	B	306	ARG	NE-CZ-NH1	6.94	123.77	120.30
1	A	306	ARG	NE-CZ-NH2	-6.74	116.93	120.30
1	B	306	ARG	NE-CZ-NH2	-6.47	117.07	120.30
1	C	9	CYS	CA-CB-SG	5.95	124.70	114.00
1	D	97	LEU	CA-CB-CG	5.53	128.01	115.30
1	D	148	ASP	CB-CG-OD1	5.40	123.16	118.30
1	A	66	VAL	C-N-CA	5.37	135.11	121.70
1	A	119	ARG	NE-CZ-NH1	5.21	122.91	120.30
1	A	9	CYS	CA-CB-SG	5.16	123.29	114.00

There are no chirality outliers.

All (28) planarity outliers are listed below:

Mol	Chain	Res	Type	Group
1	A	122	LEU	Peptide
1	A	24	TYR	Peptide
1	B	1	MET	Peptide
1	B	141	VAL	Peptide
1	B	145	GLY	Peptide
1	B	154	GLN	Peptide
1	B	159	ASN	Peptide
1	B	16	SER	Peptide
1	B	164	ALA	Peptide
1	B	170	GLY	Peptide
1	B	176	THR	Peptide
1	B	18	LYS	Peptide
1	B	24	TYR	Peptide
1	B	32	ALA	Peptide
1	B	39	GLY	Peptide
1	B	46	LEU	Peptide
1	B	48	ALA	Peptide
1	B	51	ALA	Peptide
1	B	6	ASP	Peptide
1	B	66	VAL	Peptide
1	B	72	ALA	Peptide
1	C	144	GLY	Peptide
1	C	148	ASP	Peptide
1	C	171	VAL	Peptide
1	C	6	ASP	Peptide
1	D	144	GLY	Peptide

Continued on next page...

Continued from previous page...

Mol	Chain	Res	Type	Group
1	D	50	SER	Peptide
1	D	55	LYS	Peptide

5.2 Too-close contacts

In the following table, the Non-H and H(model) columns list the number of non-hydrogen atoms and hydrogen atoms in the chain respectively. The H(added) column lists the number of hydrogen atoms added and optimized by MolProbity. The Clashes column lists the number of clashes within the asymmetric unit, whereas Symm-Clashes lists symmetry related clashes.

Mol	Chain	Non-H	H(model)	H(added)	Clashes	Symm-Clashes
1	A	2507	0	2481	23	0
1	B	2507	0	2476	79	0
1	C	2503	0	2479	23	0
1	D	2494	0	2462	24	0
2	A	1	0	0	0	0
2	B	1	0	0	0	0
2	C	1	0	0	0	0
2	D	1	0	0	0	0
3	A	1	0	0	0	0
3	B	1	0	0	0	0
3	C	1	0	0	0	0
3	D	1	0	0	0	0
4	A	10	0	14	0	0
4	B	10	0	14	2	0
5	C	7	0	10	1	0
6	D	13	0	18	0	0
7	A	9	0	0	0	0
7	B	12	0	0	0	0
7	C	7	0	0	0	0
7	D	12	0	0	0	0
All	All	10099	0	9954	138	0

The all-atom clashscore is defined as the number of clashes found per 1000 atoms (including hydrogen atoms). The all-atom clashscore for this structure is 7.

All (138) close contacts within the same asymmetric unit are listed below, sorted by their clash magnitude.

Atom-1	Atom-2	Interatomic distance (Å)	Clash overlap (Å)
1:B:145:GLY:O	1:B:176:THR:OG1	1.87	0.89

Continued on next page...

Continued from previous page...

Atom-1	Atom-2	Interatomic distance (Å)	Clash overlap (Å)
1:B:89:TYR:HA	1:B:93:ILE:HG23	1.56	0.88
1:B:44:VAL:HG12	1:B:46:LEU:HD11	1.61	0.81
1:A:226:GLU:HG3	1:B:189:THR:HG23	1.70	0.73
1:A:185:ASP:O	1:A:189:THR:HB	1.89	0.73
1:C:185:ASP:O	1:C:189:THR:HB	1.90	0.71
1:D:135:THR:HG22	1:D:146:ILE:HD11	1.74	0.70
1:D:119:ARG:NH1	1:D:121:ASP:OD1	2.23	0.70
1:B:14:ILE:HG21	1:B:166:SER:O	1.93	0.68
1:B:185:ASP:O	1:B:189:THR:HB	1.92	0.68
1:A:119:ARG:HD2	1:A:121:ASP:OD2	1.94	0.68
1:B:66:VAL:O	1:B:70:VAL:HG23	1.95	0.67
1:B:40:VAL:O	1:B:42:VAL:HG23	1.95	0.66
1:B:10:ASP:OD2	1:B:12:SER:OG	2.13	0.64
1:B:305:ARG:NH2	4:B:403:PGE:H52	2.12	0.64
1:B:142:ARG:O	1:B:142:ARG:HG2	1.98	0.64
1:B:214:VAL:HG11	1:B:312:GLN:HE22	1.63	0.63
1:B:55:LYS:HA	1:B:58:ALA:HB3	1.79	0.63
1:B:44:VAL:HG12	1:B:46:LEU:CD1	2.27	0.63
1:D:146:ILE:HG23	1:D:147:PRO:HD2	1.81	0.62
1:B:305:ARG:NH2	4:B:403:PGE:C5	2.64	0.61
1:A:301:MET:O	1:A:305:ARG:HG2	2.00	0.61
1:D:55:LYS:O	1:D:58:ALA:HB3	2.01	0.60
1:B:12:SER:HA	1:B:15:GLN:HB2	1.83	0.60
1:B:89:TYR:HA	1:B:93:ILE:CG2	2.30	0.59
1:B:45:GLY:C	1:B:46:LEU:HD12	2.22	0.59
1:B:21:ILE:C	1:B:22:ILE:HD12	2.22	0.59
1:D:185:ASP:O	1:D:189:THR:HB	2.02	0.58
1:D:119:ARG:HG2	1:D:119:ARG:HH11	1.69	0.58
1:B:93:ILE:O	1:B:97:LEU:HB2	2.04	0.57
1:B:43:TYR:O	1:B:44:VAL:HG23	2.03	0.57
1:A:97:LEU:HD13	1:A:122:LEU:HD21	1.86	0.57
1:B:19:VAL:HG12	1:B:19:VAL:O	2.05	0.56
1:B:69:ALA:O	1:B:73:ALA:HB2	2.06	0.55
1:B:127:ILE:HG13	1:B:150:ILE:HG22	1.88	0.55
1:B:25:GLY:O	1:B:27:GLN:N	2.40	0.55
1:B:25:GLY:O	1:B:28:GLY:N	2.40	0.55
1:D:228:LEU:C	1:D:228:LEU:HD12	2.27	0.55
1:C:97:LEU:HD22	1:C:101:ALA:HB3	1.89	0.54
1:D:194:GLU:HA	1:D:198:LEU:HB2	1.88	0.53
1:B:14:ILE:CG2	1:B:166:SER:O	2.57	0.52
1:B:65:SER:O	1:B:69:ALA:N	2.38	0.52

Continued on next page...

Continued from previous page...

Atom-1	Atom-2	Interatomic distance (Å)	Clash overlap (Å)
1:C:247:ASN:ND2	1:C:258:GLU:OE1	2.34	0.52
1:B:150:ILE:HD12	1:B:180:GLU:HA	1.92	0.51
1:C:305:ARG:HD3	1:D:255:GLU:OE1	2.10	0.51
1:A:132:PRO:O	1:A:136:VAL:HG23	2.10	0.51
1:B:149:LEU:HD23	1:B:179:ILE:HB	1.92	0.51
1:B:52:SER:O	1:B:56:ALA:N	2.39	0.51
1:B:88:LEU:O	1:B:93:ILE:HG22	2.11	0.50
1:C:189:THR:CG2	1:D:226:GLU:HG3	2.41	0.50
1:A:220:PRO:HB2	1:A:316:VAL:HG21	1.94	0.50
1:B:66:VAL:HG12	1:B:67:LYS:HZ2	1.77	0.50
1:C:226:GLU:HG3	1:D:189:THR:HG23	1.94	0.50
1:D:234:ILE:O	1:D:238:MET:HG3	2.12	0.50
1:B:136:VAL:HG22	1:B:146:ILE:HD12	1.94	0.49
1:B:324:MET:O	1:B:327:ILE:HB	2.13	0.49
1:B:228:LEU:C	1:B:228:LEU:HD12	2.33	0.49
1:C:176:THR:HG21	1:D:326:TRP:HZ3	1.79	0.48
1:C:11:LEU:O	1:C:15:GLN:HG3	2.13	0.48
1:B:9[B]:CYS:SG	1:B:10:ASP:O	2.72	0.48
1:A:97:LEU:HD13	1:A:122:LEU:CD2	2.44	0.48
1:C:305:ARG:NH1	5:C:403:PEG:H42	2.27	0.48
1:D:136:VAL:HA	1:D:146:ILE:HD13	1.95	0.48
1:B:44:VAL:CG1	1:B:46:LEU:HD11	2.39	0.48
1:B:24:TYR:OH	1:B:29:HIS:ND1	2.36	0.47
1:B:15:GLN:O	1:B:41[B]:ASP:OD1	2.32	0.47
1:D:228:LEU:CD1	1:D:228:LEU:C	2.83	0.47
1:B:10:ASP:O	1:B:11:LEU:CB	2.63	0.47
1:C:298:TYR:N	1:C:299:PRO:CD	2.77	0.47
1:B:10:ASP:O	1:B:11:LEU:HB2	2.14	0.47
1:B:50:SER:O	1:B:53:VAL:N	2.47	0.46
1:B:35:LEU:HD12	1:B:170:GLY:O	2.15	0.46
1:B:51:ALA:HA	1:B:54:ALA:HB3	1.97	0.46
1:B:141:VAL:O	1:B:142:ARG:CB	2.63	0.46
1:C:194:GLU:HA	1:C:198:LEU:HB2	1.98	0.46
1:B:22:ILE:N	1:B:22:ILE:HD12	2.30	0.46
1:B:106:ALA:O	1:B:128:ALA:HB2	2.15	0.46
1:B:3:VAL:CG1	1:B:177:GLY:HA2	2.46	0.46
1:D:322:THR:O	1:D:325:PRO:HG3	2.16	0.45
1:B:164:ALA:O	1:B:167:TYR:HB3	2.16	0.45
1:C:46:LEU:O	1:C:65:SER:HA	2.16	0.45
1:C:144:GLY:O	1:C:175:ARG:NE	2.50	0.45
1:B:119:ARG:NH1	1:B:121:ASP:OD2	2.50	0.45

Continued on next page...

Continued from previous page...

Atom-1	Atom-2	Interatomic distance (Å)	Clash overlap (Å)
1:A:87:ARG:NH1	1:A:91:ASP:OD2	2.49	0.45
1:B:26:SER:O	1:B:133:GLY:HA3	2.17	0.45
1:A:269:GLN:NE2	1:B:269:GLN:OE1	2.48	0.45
1:C:94:GLU:HB3	1:C:95:PRO:HD3	1.98	0.45
1:B:47:ARG:O	1:B:48:ALA:CB	2.65	0.45
1:B:50:SER:O	1:B:52:SER:N	2.50	0.44
1:C:50:SER:O	1:C:51:ALA:C	2.55	0.44
1:D:47:ARG:O	1:D:50:SER:OG	2.36	0.44
1:C:189:THR:HG23	1:D:226:GLU:HG3	2.00	0.44
1:A:228:LEU:C	1:A:228:LEU:HD23	2.38	0.44
1:A:301:MET:O	1:A:305:ARG:CG	2.65	0.43
1:A:47[B]:ARG:HE	1:A:66:VAL:CG1	2.31	0.43
1:A:47[B]:ARG:CZ	1:A:47[B]:ARG:HA	2.48	0.43
1:B:288:LYS:O	1:B:292:THR:HG23	2.18	0.43
1:C:301:MET:O	1:C:305:ARG:HG2	2.19	0.43
1:D:105:PHE:O	1:D:126:MET:HA	2.19	0.43
1:B:21:ILE:N	1:B:22:ILE:HD12	2.33	0.43
1:B:80:THR:HB	1:B:81:PRO:HD2	1.99	0.43
1:B:6:ASP:OD1	1:B:174:GLY:HA3	2.19	0.43
1:A:189:THR:HG23	1:B:226:GLU:HG3	2.00	0.43
1:B:214:VAL:HG11	1:B:312:GLN:NE2	2.31	0.43
1:D:219:ALA:HA	1:D:220:PRO:HD3	1.92	0.42
1:A:298:TYR:N	1:A:299:PRO:CD	2.82	0.42
1:B:24:TYR:HA	1:B:25:GLY:HA2	1.80	0.42
1:B:49:GLY:HA2	1:B:53:VAL:HG21	2.02	0.42
1:C:75:VAL:HG22	1:C:102:THR:HB	2.01	0.42
1:A:103:LEU:O	1:A:124:VAL:HA	2.19	0.42
1:A:53:VAL:O	1:A:57:GLU:HG3	2.20	0.42
1:C:165:LEU:HA	1:C:165:LEU:HD12	1.92	0.42
1:C:228:LEU:HD12	1:C:228:LEU:C	2.40	0.42
1:D:97:LEU:HD13	1:D:122:LEU:HD21	2.00	0.42
1:B:298:TYR:N	1:B:299:PRO:CD	2.83	0.41
1:B:130:LYS:O	1:B:131:ALA:HB2	2.19	0.41
1:C:145:GLY:HA2	1:C:172:GLY:O	2.21	0.41
1:D:278:LEU:O	1:D:282:GLN:HG3	2.21	0.41
1:D:324:MET:HE3	1:D:327:ILE:HD13	2.01	0.41
1:B:11:LEU:HD22	1:B:15:GLN:HE22	1.85	0.41
1:A:163:LEU:HD23	1:A:163:LEU:O	2.21	0.41
1:A:129:PRO:HA	1:A:148:ASP:HA	2.03	0.41
1:B:137:ARG:HD3	1:B:137:ARG:HA	1.84	0.41
1:B:79:LEU:HD23	1:B:106:ALA:HB2	2.03	0.41

Continued on next page...

Continued from previous page...

Atom-1	Atom-2	Interatomic distance (Å)	Clash overlap (Å)
1:A:104:ALA:HA	1:A:125:ILE:O	2.21	0.41
1:C:269[B]:GLN:NE2	1:D:269:GLN:OE1	2.54	0.41
1:B:124:VAL:HG12	1:B:153:TYR:HB3	2.02	0.41
1:B:94:GLU:N	1:B:95:PRO:CD	2.84	0.41
1:B:43:TYR:O	1:B:44:VAL:CG2	2.69	0.40
1:A:258:GLU:HB2	1:B:199:CYS:HB3	2.02	0.40
1:C:301:MET:O	1:C:305:ARG:CG	2.69	0.40
1:B:173:GLY:O	1:B:177:GLY:N	2.53	0.40
1:A:181:THR:HG21	1:B:222:MET:HE1	2.02	0.40
1:B:168:ALA:HA	1:B:171:VAL:HG23	2.03	0.40
1:B:66:VAL:O	1:B:67:LYS:C	2.60	0.40
1:B:137:ARG:O	1:B:141:VAL:HB	2.21	0.40
1:B:19:VAL:HG22	1:B:75:VAL:HB	2.02	0.40

There are no symmetry-related clashes.

5.3 Torsion angles [i](#)

5.3.1 Protein backbone [i](#)

In the following table, the Percentiles column shows the percent Ramachandran outliers of the chain as a percentile score with respect to all X-ray entries followed by that with respect to entries of similar resolution.

The Analysed column shows the number of residues for which the backbone conformation was analysed, and the total number of residues.

Mol	Chain	Analysed	Favoured	Allowed	Outliers	Percentiles	
1	A	329/338 (97%)	307 (93%)	22 (7%)	0	100	100
1	B	330/338 (98%)	278 (84%)	34 (10%)	18 (6%)	2	2
1	C	328/338 (97%)	301 (92%)	24 (7%)	3 (1%)	21	37
1	D	327/338 (97%)	307 (94%)	18 (6%)	2 (1%)	30	50
All	All	1314/1352 (97%)	1193 (91%)	98 (8%)	23 (2%)	11	18

All (23) Ramachandran outliers are listed below:

Mol	Chain	Res	Type
1	B	7	LYS
1	B	11	LEU

Continued on next page...

Continued from previous page...

Mol	Chain	Res	Type
1	B	26	SER
1	B	67	LYS
1	C	7	LYS
1	B	48	ALA
1	B	51	ALA
1	B	131	ALA
1	B	142	ARG
1	B	165	LEU
1	B	327	ILE
1	C	49	GLY
1	D	49	GLY
1	B	34	ASN
1	B	2	LYS
1	B	44	VAL
1	B	52	SER
1	B	66	VAL
1	B	93	ILE
1	D	51	ALA
1	B	54	ALA
1	C	51	ALA
1	B	23	GLY

5.3.2 Protein sidechains ⓘ

In the following table, the Percentiles column shows the percent sidechain outliers of the chain as a percentile score with respect to all X-ray entries followed by that with respect to entries of similar resolution.

The Analysed column shows the number of residues for which the sidechain conformation was analysed, and the total number of residues.

Mol	Chain	Analysed	Rotameric	Outliers	Percentiles	
1	A	260/266 (98%)	243 (94%)	17 (6%)	21	39
1	B	261/266 (98%)	221 (85%)	40 (15%)	3	6
1	C	259/266 (97%)	231 (89%)	28 (11%)	8	15
1	D	258/266 (97%)	238 (92%)	20 (8%)	16	29
All	All	1038/1064 (98%)	933 (90%)	105 (10%)	10	17

All (105) residues with a non-rotameric sidechain are listed below:

Mol	Chain	Res	Type
1	A	1	MET
1	A	9	CYS
1	A	97	LEU
1	A	98	LYS
1	A	99	LYS
1	A	121	ASP
1	A	138	SER
1	A	141	VAL
1	A	169[C]	CYS
1	A	169[D]	CYS
1	A	176	THR
1	A	189	THR
1	A	214	VAL
1	A	305	ARG
1	A	323	MET
1	A	326	TRP
1	A	327	ILE
1	B	1	MET
1	B	2	LYS
1	B	7	LYS
1	B	8	ASP
1	B	11	LEU
1	B	15	GLN
1	B	16	SER
1	B	18	LYS
1	B	21	ILE
1	B	26	SER
1	B	41[A]	ASP
1	B	41[B]	ASP
1	B	43	TYR
1	B	52	SER
1	B	55	LYS
1	B	61	LEU
1	B	62	THR
1	B	65	SER
1	B	67	LYS
1	B	79	LEU
1	B	80	THR
1	B	87	ARG
1	B	97	LEU
1	B	99	LYS
1	B	135	THR
1	B	137	ARG

Continued on next page...

Continued from previous page...

Mol	Chain	Res	Type
1	B	152	VAL
1	B	154	GLN
1	B	157	SER
1	B	163	LEU
1	B	166	SER
1	B	171	VAL
1	B	175	ARG
1	B	179	ILE
1	B	189	THR
1	B	198	LEU
1	B	228	LEU
1	B	249	SER
1	B	305	ARG
1	B	327	ILE
1	C	1	MET
1	C	6	ASP
1	C	7	LYS
1	C	9	CYS
1	C	12	SER
1	C	16	SER
1	C	18	LYS
1	C	26	SER
1	C	41	ASP
1	C	67[A]	LYS
1	C	67[B]	LYS
1	C	87	ARG
1	C	97	LEU
1	C	99	LYS
1	C	142	ARG
1	C	163	LEU
1	C	165	LEU
1	C	169	CYS
1	C	175	ARG
1	C	176	THR
1	C	180	GLU
1	C	198	LEU
1	C	228	LEU
1	C	245	ASN
1	C	305	ARG
1	C	318	GLU
1	C	323	MET
1	C	326	TRP

Continued on next page...

Continued from previous page...

Mol	Chain	Res	Type
1	D	1	MET
1	D	9	CYS
1	D	36	LYS
1	D	66	VAL
1	D	67	LYS
1	D	87	ARG
1	D	97	LEU
1	D	99	LYS
1	D	119	ARG
1	D	169[A]	CYS
1	D	169[B]	CYS
1	D	189	THR
1	D	198	LEU
1	D	222	MET
1	D	228	LEU
1	D	230	GLU
1	D	249	SER
1	D	316	VAL
1	D	318	GLU
1	D	326	TRP

Some sidechains can be flipped to improve hydrogen bonding and reduce clashes. All (5) such sidechains are listed below:

Mol	Chain	Res	Type
1	A	96	ASN
1	A	297	ASN
1	B	15	GLN
1	B	59	HIS
1	B	312	GLN

5.3.3 RNA ⓘ

There are no RNA molecules in this entry.

5.4 Non-standard residues in protein, DNA, RNA chains ⓘ

There are no non-standard protein/DNA/RNA residues in this entry.

5.5 Carbohydrates

There are no carbohydrates in this entry.

5.6 Ligand geometry

Of 12 ligands modelled in this entry, 8 are monoatomic - leaving 4 for Mogul analysis.

In the following table, the Counts columns list the number of bonds (or angles) for which Mogul statistics could be retrieved, the number of bonds (or angles) that are observed in the model and the number of bonds (or angles) that are defined in the chemical component dictionary. The Link column lists molecule types, if any, to which the group is linked. The Z score for a bond length (or angle) is the number of standard deviations the observed value is removed from the expected value. A bond length (or angle) with $|Z| > 2$ is considered an outlier worth inspection. RMSZ is the root-mean-square of all Z scores of the bond lengths (or angles).

Mol	Type	Chain	Res	Link	Bond lengths			Bond angles		
					Counts	RMSZ	$\# Z > 2$	Counts	RMSZ	$\# Z > 2$
4	PGE	A	403	-	9,9,9	0.74	0	8,8,8	1.08	0
4	PGE	B	403	-	9,9,9	0.89	0	8,8,8	1.67	2 (25%)
5	PEG	C	403	-	6,6,6	0.77	0	5,5,5	0.85	0
6	PG4	D	403	-	12,12,12	0.61	0	11,11,11	0.57	0

In the following table, the Chirals column lists the number of chiral outliers, the number of chiral centers analysed, the number of these observed in the model and the number defined in the chemical component dictionary. Similar counts are reported in the Torsion and Rings columns. '-' means no outliers of that kind were identified.

Mol	Type	Chain	Res	Link	Chirals	Torsions	Rings
4	PGE	A	403	-	-	0/7/7/7	0/0/0/0
4	PGE	B	403	-	-	0/7/7/7	0/0/0/0
5	PEG	C	403	-	-	0/4/4/4	0/0/0/0
6	PG4	D	403	-	-	0/10/10/10	0/0/0/0

There are no bond length outliers.

All (2) bond angle outliers are listed below:

Mol	Chain	Res	Type	Atoms	Z	Observed(°)	Ideal(°)
4	B	403	PGE	C5-O3-C4	2.64	124.67	113.31
4	B	403	PGE	O3-C4-C3	3.16	124.42	110.36

There are no chirality outliers.

There are no torsion outliers.

There are no ring outliers.

2 monomers are involved in 3 short contacts:

Mol	Chain	Res	Type	Clashes	Symm-Clashes
4	B	403	PGE	2	0
5	C	403	PEG	1	0

5.7 Other polymers [i](#)

There are no such residues in this entry.

5.8 Polymer linkage issues [i](#)

There are no chain breaks in this entry.

6 Fit of model and data ⓘ

6.1 Protein, DNA and RNA chains ⓘ

In the following table, the column labelled ‘#RSRZ> 2’ contains the number (and percentage) of RSRZ outliers, followed by percent RSRZ outliers for the chain as percentile scores relative to all X-ray entries and entries of similar resolution. The OWAB column contains the minimum, median, 95th percentile and maximum values of the occupancy-weighted average B-factor per residue. The column labelled ‘Q< 0.9’ lists the number of (and percentage) of residues with an average occupancy less than 0.9.

Mol	Chain	Analysed	<RSRZ>	#RSRZ>2	OWAB(Å ²)	Q<0.9
1	A	328/338 (97%)	-0.42	1 (0%) 94 95	22, 38, 66, 124	0
1	B	328/338 (97%)	0.04	16 (4%) 33 38	23, 51, 104, 121	0
1	C	328/338 (97%)	-0.28	1 (0%) 94 95	24, 44, 76, 125	0
1	D	328/338 (97%)	-0.37	5 (1%) 76 79	20, 38, 79, 127	0
All	All	1312/1352 (97%)	-0.26	23 (1%) 71 75	20, 41, 93, 127	0

All (23) RSRZ outliers are listed below:

Mol	Chain	Res	Type	RSRZ
1	B	35	LEU	5.0
1	D	328	ALA	4.8
1	B	144	GLY	4.1
1	B	48	ALA	3.8
1	B	140	PHE	3.7
1	D	51	ALA	3.3
1	B	24	TYR	3.2
1	B	175	ARG	2.9
1	A	326	TRP	2.9
1	B	60	GLY	2.9
1	B	41[A]	ASP	2.8
1	B	43	TYR	2.7
1	D	326	TRP	2.7
1	B	64	LYS	2.6
1	D	327	ILE	2.6
1	C	169	CYS	2.5
1	B	53	VAL	2.5
1	B	51	ALA	2.4
1	B	63	VAL	2.2
1	D	49	GLY	2.2
1	B	7	LYS	2.2

Continued on next page...

Continued from previous page...

Mol	Chain	Res	Type	RSRZ
1	B	169[A]	CYS	2.0
1	B	71	ALA	2.0

6.2 Non-standard residues in protein, DNA, RNA chains [i](#)

There are no non-standard protein/DNA/RNA residues in this entry.

6.3 Carbohydrates [i](#)

There are no carbohydrates in this entry.

6.4 Ligands [i](#)

In the following table, the Atoms column lists the number of modelled atoms in the group and the number defined in the chemical component dictionary. LLDF column lists the quality of electron density of the group with respect to its neighbouring residues in protein, DNA or RNA chains. The B-factors column lists the minimum, median, 95th percentile and maximum values of B factors of atoms in the group. The column labelled 'Q< 0.9' lists the number of atoms with occupancy less than 0.9.

Mol	Type	Chain	Res	Atoms	RSCC	RSR	LLDF	B-factors(Å ²)	Q<0.9
6	PG4	D	403	13/13	0.92	0.17	3.86	40,45,50,51	0
4	PGE	A	403	10/10	0.90	0.18	2.99	45,51,58,58	0
5	PEG	C	403	7/7	0.94	0.17	2.13	33,39,39,40	0
4	PGE	B	403	10/10	0.94	0.14	0.46	42,44,48,51	0
2	MG	A	401	1/1	0.91	0.11	-	54,54,54,54	0
3	FE	A	402	1/1	0.96	0.05	-	95,95,95,95	0
2	MG	D	401	1/1	0.78	0.17	-	58,58,58,58	0
2	MG	B	401	1/1	0.92	0.11	-	55,55,55,55	0
3	FE	B	402	1/1	0.99	0.09	-	56,56,56,56	0
3	FE	C	401	1/1	0.97	0.07	-	74,74,74,74	0
2	MG	C	402	1/1	0.93	0.08	-	54,54,54,54	0
3	FE	D	402	1/1	0.99	0.12	-	59,59,59,59	0

6.5 Other polymers [i](#)

There are no such residues in this entry.