



Full wwPDB X-ray Structure Validation Report ⓘ

Jan 31, 2016 – 11:31 PM GMT

PDB ID : 1XMU
Title : Catalytic Domain Of Human Phosphodiesterase 4B In Complex With Roflumilast
Authors : Card, G.L.; England, B.P.; Suzuki, Y.; Fong, D.; Powell, B.; Lee, B.; Luu, C.; Tabrizizad, M.; Gillette, S.; Ibrahim, P.N.; Artis, D.R.; Bollag, G.; Milburn, M.V.; Kim, S.-H.; Schlessinger, J.; Zhang, K.Y.J.
Deposited on : 2004-10-04
Resolution : 2.30 Å(reported)

This is a Full wwPDB X-ray Structure Validation Report for a publicly released PDB entry.
We welcome your comments at validation@mail.wwpdb.org
A user guide is available at
<http://wwpdb.org/validation/2016/XrayValidationReportHelp>
with specific help available everywhere you see the ⓘ symbol.

The following versions of software and data (see [references ⓘ](#)) were used in the production of this report:

MolProbity : 4.02b-467
Mogul : 1.7 (RC4), CSD as536be (2015)
Xtriage (Phenix) : 1.9-1692
EDS : rb-20026688
Percentile statistics : 20151230.v01 (using entries in the PDB archive December 30th 2015)
Refmac : 5.8.0135
CCP4 : 6.5.0
Ideal geometry (proteins) : Engh & Huber (2001)
Ideal geometry (DNA, RNA) : Parkinson et al. (1996)
Validation Pipeline (wwPDB-VP) : trunk26865

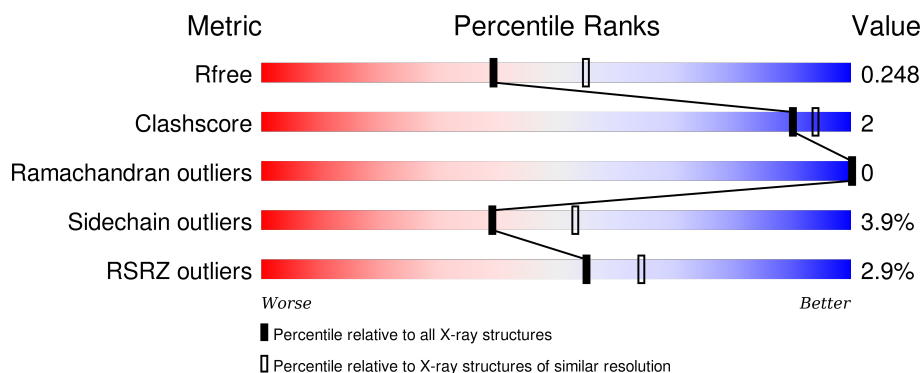
1 Overall quality at a glance

The following experimental techniques were used to determine the structure:

X-RAY DIFFRACTION

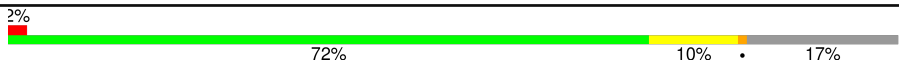

The reported resolution of this entry is 2.30 Å.

Percentile scores (ranging between 0-100) for global validation metrics of the entry are shown in the following graphic. The table shows the number of entries on which the scores are based.



Metric	Whole archive (#Entries)	Similar resolution (#Entries, resolution range(Å))
R_{free}	91344	3852 (2.30-2.30)
Clashscore	102246	4452 (2.30-2.30)
Ramachandran outliers	100387	4410 (2.30-2.30)
Sidechain outliers	100360	4409 (2.30-2.30)
RSRZ outliers	91569	3857 (2.30-2.30)

The table below summarises the geometric issues observed across the polymeric chains and their fit to the electron density. The red, orange, yellow and green segments on the lower bar indicate the fraction of residues that contain outliers for ≥ 3 , 2, 1 and 0 types of geometric quality criteria. A grey segment represents the fraction of residues that are not modelled. The numeric value for each fraction is indicated below the corresponding segment, with a dot representing fractions $\leq 5\%$. The upper red bar (where present) indicates the fraction of residues that have poor fit to the electron density. The numeric value is given above the bar.

Mol	Chain	Length	Quality of chain
1	A	398	
2	B	398	

2 Entry composition

There are 6 unique types of molecules in this entry. The entry contains 5442 atoms, of which 0 are hydrogens and 0 are deuteriums.

In the tables below, the ZeroOcc column contains the number of atoms modelled with zero occupancy, the AltConf column contains the number of residues with at least one atom in alternate conformation and the Trace column contains the number of residues modelled with at most 2 atoms.

- Molecule 1 is a protein called cAMP-specific 3',5'-cyclic phosphodiesterase 4B.

Mol	Chain	Residues	Atoms					ZeroOcc	AltConf	Trace
			Total	C	N	O	S			
1	A	331	2686	1694	454	517	21	0	0	0

There are 21 discrepancies between the modelled and reference sequences:

Chain	Residue	Modelled	Actual	Comment	Reference
A	131	MET	-	INITIATING METHIONINE	UNP Q07343
A	132	GLY	-	CLONING ARTIFACT	UNP Q07343
A	133	SER	-	CLONING ARTIFACT	UNP Q07343
A	134	SER	-	CLONING ARTIFACT	UNP Q07343
A	135	HIS	-	EXPRESSION TAG	UNP Q07343
A	136	HIS	-	EXPRESSION TAG	UNP Q07343
A	137	HIS	-	EXPRESSION TAG	UNP Q07343
A	138	HIS	-	EXPRESSION TAG	UNP Q07343
A	139	HIS	-	EXPRESSION TAG	UNP Q07343
A	140	HIS	-	EXPRESSION TAG	UNP Q07343
A	141	SER	-	CLONING ARTIFACT	UNP Q07343
A	142	SER	-	CLONING ARTIFACT	UNP Q07343
A	143	GLY	-	CLONING ARTIFACT	UNP Q07343
A	144	LEU	-	CLONING ARTIFACT	UNP Q07343
A	145	VAL	-	CLONING ARTIFACT	UNP Q07343
A	146	PRO	-	CLONING ARTIFACT	UNP Q07343
A	147	ARG	-	CLONING ARTIFACT	UNP Q07343
A	148	GLY	-	CLONING ARTIFACT	UNP Q07343
A	149	SER	-	CLONING ARTIFACT	UNP Q07343
A	150	HIS	-	CLONING ARTIFACT	UNP Q07343
A	151	MET	-	CLONING ARTIFACT	UNP Q07343

- Molecule 2 is a protein called cAMP-specific 3',5'-cyclic phosphodiesterase 4B.

Mol	Chain	Residues	Atoms					ZeroOcc	AltConf	Trace
2	B	323	Total	C	N	O	S	0	0	0
			2621	1655	441	504	21			

There are 21 discrepancies between the modelled and reference sequences:

Chain	Residue	Modelled	Actual	Comment	Reference
B	131	MET	-	INITIATING METHIONINE	UNP Q07343
B	132	GLY	-	CLONING ARTIFACT	UNP Q07343
B	133	SER	-	CLONING ARTIFACT	UNP Q07343
B	134	SER	-	CLONING ARTIFACT	UNP Q07343
B	135	HIS	-	EXPRESSION TAG	UNP Q07343
B	136	HIS	-	EXPRESSION TAG	UNP Q07343
B	137	HIS	-	EXPRESSION TAG	UNP Q07343
B	138	HIS	-	EXPRESSION TAG	UNP Q07343
B	139	HIS	-	EXPRESSION TAG	UNP Q07343
B	140	HIS	-	EXPRESSION TAG	UNP Q07343
B	141	SER	-	CLONING ARTIFACT	UNP Q07343
B	142	SER	-	CLONING ARTIFACT	UNP Q07343
B	143	GLY	-	CLONING ARTIFACT	UNP Q07343
B	144	LEU	-	CLONING ARTIFACT	UNP Q07343
B	145	VAL	-	CLONING ARTIFACT	UNP Q07343
B	146	PRO	-	CLONING ARTIFACT	UNP Q07343
B	147	ARG	-	CLONING ARTIFACT	UNP Q07343
B	148	GLY	-	CLONING ARTIFACT	UNP Q07343
B	149	SER	-	CLONING ARTIFACT	UNP Q07343
B	150	HIS	-	CLONING ARTIFACT	UNP Q07343
B	151	MET	-	CLONING ARTIFACT	UNP Q07343

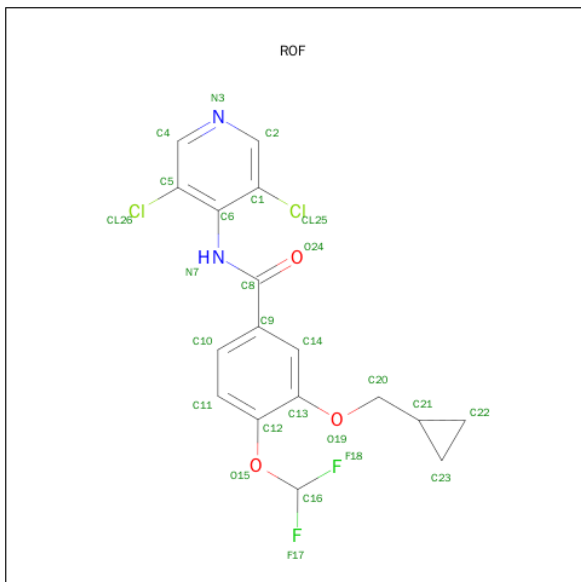
- Molecule 3 is ZINC ION (three-letter code: ZN) (formula: Zn).

Mol	Chain	Residues	Atoms		ZeroOcc	AltConf
3	B	1	Total	Zn	0	0
			1	1		
3	A	1	Total	Zn	0	0
			1	1		

- Molecule 4 is MAGNESIUM ION (three-letter code: MG) (formula: Mg).

Mol	Chain	Residues	Atoms		ZeroOcc	AltConf
4	B	1	Total	Mg	0	0
			1	1		
4	A	1	Total	Mg	0	0
			1	1		

- Molecule 5 is 3-(CYCLOPROPYLMETHOXY)-N-(3,5-DICHLOROPYRIDIN-4-YL)-4-(DIFLUOROMETHOXY)BENZAMIDE (three-letter code: ROF) (formula: $C_{17}H_{14}Cl_2F_2N_2O_3$).



Mol	Chain	Residues	Atoms						ZeroOcc	AltConf
5	A	1	Total	C	Cl	F	N	O	0	0
			26	17	2	2	2	3		
5	B	1	Total	C	Cl	F	N	O	0	0
			26	17	2	2	2	3		

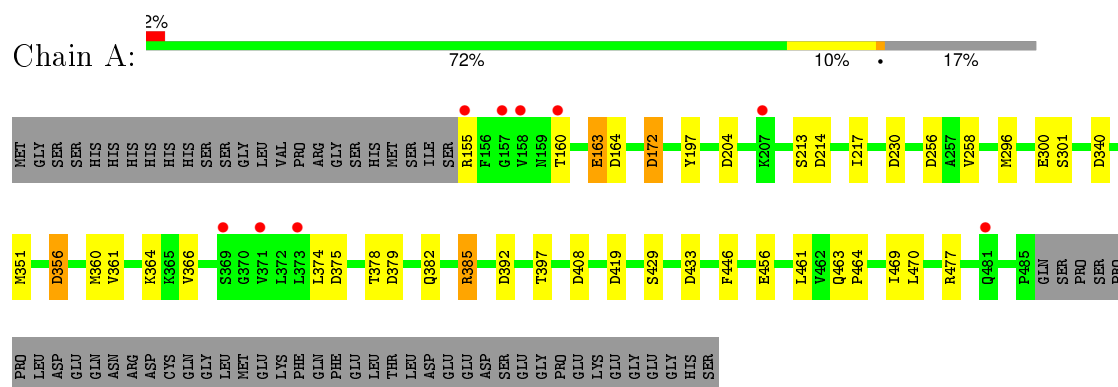
- Molecule 6 is water.

Mol	Chain	Residues	Atoms		ZeroOcc	AltConf
6	A	35	Total	O	0	0
			35	35		
6	B	44	Total	O	0	0
			44	44		

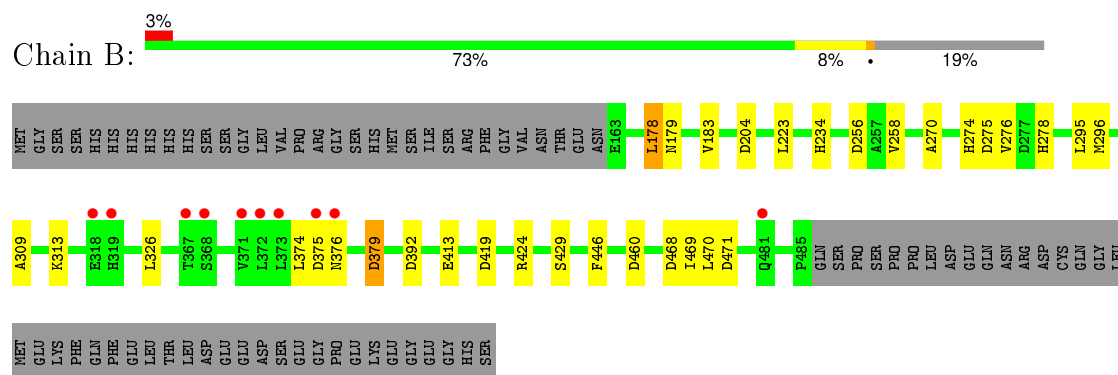
3 Residue-property plots [i](#)

These plots are drawn for all protein, RNA and DNA chains in the entry. The first graphic for a chain summarises the proportions of errors displayed in the second graphic. The second graphic shows the sequence view annotated by issues in geometry and electron density. Residues are color-coded according to the number of geometric quality criteria for which they contain at least one outlier: green = 0, yellow = 1, orange = 2 and red = 3 or more. A red dot above a residue indicates a poor fit to the electron density ($RSRZ > 2$). Stretches of 2 or more consecutive residues without any outlier are shown as a green connector. Residues present in the sample, but not in the model, are shown in grey.

- Molecule 1: cAMP-specific 3',5'-cyclic phosphodiesterase 4B



- Molecule 2: cAMP-specific 3',5'-cyclic phosphodiesterase 4B



4 Data and refinement statistics

Property	Value	Source
Space group	P 21 21 21	Depositor
Cell constants a, b, c, α , β , γ	89.32Å 94.10Å 108.03Å 90.00° 90.00° 90.00°	Depositor
Resolution (Å)	70.71 – 2.30 46.84 – 2.30	Depositor EDS
% Data completeness (in resolution range)	90.9 (70.71-2.30) 90.9 (46.84-2.30)	Depositor EDS
R_{merge}	0.07	Depositor
R_{sym}	(Not available)	Depositor
$\langle I/\sigma(I) \rangle$ ¹	2.13 (at 2.29Å)	Xtriage
Refinement program	REFMAC 5.1.25	Depositor
R, R_{free}	0.208 , 0.246 0.210 , 0.248	Depositor DCC
R_{free} test set	1874 reflections (5.28%)	DCC
Wilson B-factor (Å ²)	46.1	Xtriage
Anisotropy	0.207	Xtriage
Bulk solvent k_{sol} (e/Å ³), B_{sol} (Å ²)	0.36 , 34.1	EDS
Estimated twinning fraction	0.026 for k,h,-l	Xtriage
L-test for twinning ²	$\langle L \rangle = 0.49$, $\langle L^2 \rangle = 0.32$	Xtriage
Outliers	2 of 37400 reflections (0.005%)	Xtriage
F_o, F_c correlation	0.95	EDS
Total number of atoms	5442	wwPDB-VP
Average B, all atoms (Å ²)	34.0	wwPDB-VP

Xtriage's analysis on translational NCS is as follows: *The analyses of the Patterson function reveals a significant off-origin peak that is 36.73 % of the origin peak, indicating pseudo translational symmetry. The chance of finding a peak of this or larger height randomly in a structure without pseudo translational symmetry is equal to 4.7795e-04. The detected translational NCS is most likely also responsible for the elevated intensity ratio.*

¹Intensities estimated from amplitudes.

²Theoretical values of $\langle |L| \rangle$, $\langle L^2 \rangle$ for acentric reflections are 0.5, 0.375 respectively for untwinned datasets, and 0.333, 0.2 for perfectly twinned datasets.

5 Model quality

5.1 Standard geometry

Bond lengths and bond angles in the following residue types are not validated in this section: MG, ZN, CME, ROF

The Z score for a bond length (or angle) is the number of standard deviations the observed value is removed from the expected value. A bond length (or angle) with $|Z| > 5$ is considered an outlier worth inspection. RMSZ is the root-mean-square of all Z scores of the bond lengths (or angles).

Mol	Chain	Bond lengths		Bond angles	
		RMSZ	$\# Z > 5$	RMSZ	$\# Z > 5$
1	A	0.57	0/2720	0.82	12/3686 (0.3%)
2	B	0.56	0/2654	0.82	7/3597 (0.2%)
All	All	0.57	0/5374	0.82	19/7283 (0.3%)

There are no bond length outliers.

All (19) bond angle outliers are listed below:

Mol	Chain	Res	Type	Atoms	Z	Observed(°)	Ideal(°)
2	B	375	ASP	CB-CG-OD2	7.99	125.49	118.30
1	A	230	ASP	CB-CG-OD2	7.75	125.27	118.30
1	A	256	ASP	CB-CG-OD2	6.65	124.29	118.30
2	B	419	ASP	CB-CG-OD2	6.34	124.01	118.30
1	A	392	ASP	CB-CG-OD2	6.29	123.96	118.30
2	B	471	ASP	CB-CG-OD2	5.85	123.57	118.30
1	A	356	ASP	CB-CG-OD2	5.82	123.54	118.30
1	A	375	ASP	CB-CG-OD2	5.57	123.31	118.30
2	B	256	ASP	CB-CG-OD2	5.55	123.30	118.30
2	B	468	ASP	CB-CG-OD2	5.52	123.27	118.30
2	B	379	ASP	CB-CG-OD2	5.50	123.25	118.30
2	B	392	ASP	CB-CG-OD2	5.35	123.11	118.30
1	A	408	ASP	CB-CG-OD2	5.26	123.04	118.30
1	A	172	ASP	CB-CG-OD2	5.13	122.92	118.30
1	A	379	ASP	CB-CG-OD2	5.13	122.92	118.30
1	A	419	ASP	CB-CG-OD2	5.12	122.91	118.30
1	A	385	ARG	NE-CZ-NH1	5.10	122.85	120.30
1	A	214	ASP	CB-CG-OD2	5.06	122.85	118.30
1	A	433	ASP	CB-CG-OD2	5.04	122.84	118.30

There are no chirality outliers.

There are no planarity outliers.

5.2 Too-close contacts ⓘ

In the following table, the Non-H and H(model) columns list the number of non-hydrogen atoms and hydrogen atoms in the chain respectively. The H(added) column lists the number of hydrogen atoms added and optimized by MolProbity. The Clashes column lists the number of clashes within the asymmetric unit, whereas Symm-Clashes lists symmetry related clashes.

Mol	Chain	Non-H	H(model)	H(added)	Clashes	Symm-Clashes
1	A	2686	0	2607	14	0
2	B	2621	0	2548	11	0
3	A	1	0	0	0	0
3	B	1	0	0	0	0
4	A	1	0	0	0	0
4	B	1	0	0	0	0
5	A	26	0	13	1	0
5	B	26	0	13	1	0
6	A	35	0	0	0	0
6	B	44	0	0	0	0
All	All	5442	0	5181	24	0

The all-atom clashscore is defined as the number of clashes found per 1000 atoms (including hydrogen atoms). The all-atom clashscore for this structure is 2.

All (24) close contacts within the same asymmetric unit are listed below, sorted by their clash magnitude.

Atom-1	Atom-2	Interatomic distance (Å)	Clash overlap (Å)
1:A:340:ASP:OD1	1:A:385:ARG:HD3	1.86	0.75
1:A:296:MET:SD	2:B:296:MET:SD	2.85	0.75
2:B:234:HIS:ND1	2:B:413:GLU:OE2	2.26	0.64
2:B:258:VAL:HG11	2:B:374:LEU:HD12	1.83	0.59
1:A:397:THR:HB	1:A:469:ILE:HG23	1.88	0.55
2:B:376:ASN:HB3	2:B:379:ASP:OD2	2.06	0.55
2:B:178:LEU:HG	2:B:179:ASN:N	2.22	0.53
1:A:160:THR:O	1:A:163:GLU:OE1	2.27	0.52
2:B:258:VAL:CG1	2:B:374:LEU:HD12	2.39	0.52
2:B:309:ALA:O	2:B:313:LYS:HB2	2.12	0.49
2:B:446:PHE:CG	5:B:102:ROF:H202	2.49	0.48
2:B:270:ALA:O	2:B:274:HIS:HB3	2.14	0.47
1:A:258:VAL:HG11	1:A:374:LEU:HD12	1.97	0.47
1:A:356:ASP:HB3	1:A:382:GLN:NE2	2.30	0.46
1:A:197:TYR:CD1	1:A:217:ILE:HD11	2.51	0.46
1:A:163:GLU:N	1:A:163:GLU:OE2	2.48	0.45
1:A:446:PHE:CG	5:A:101:ROF:H202	2.52	0.45

Continued on next page...

Continued from previous page...

Atom-1	Atom-2	Interatomic distance (Å)	Clash overlap (Å)
2:B:275:ASP:O	2:B:278:HIS:HB2	2.16	0.45
1:A:213:SER:O	1:A:217:ILE:HG12	2.18	0.43
1:A:300:GLU:O	1:A:301:SER:C	2.57	0.43
1:A:163:GLU:CG	1:A:164:ASP:H	2.32	0.43
2:B:223:LEU:HD12	2:B:276:VAL:HG21	2.01	0.41
1:A:463:GLN:HA	1:A:464:PRO:HA	1.82	0.41
1:A:361:VAL:HG22	1:A:461:LEU:HB2	2.02	0.40

There are no symmetry-related clashes.

5.3 Torsion angles [i](#)

5.3.1 Protein backbone [i](#)

In the following table, the Percentiles column shows the percent Ramachandran outliers of the chain as a percentile score with respect to all X-ray entries followed by that with respect to entries of similar resolution.

The Analysed column shows the number of residues for which the backbone conformation was analysed, and the total number of residues.

Mol	Chain	Analysed	Favoured	Allowed	Outliers	Percentiles	
1	A	327/398 (82%)	319 (98%)	8 (2%)	0	100	100
2	B	319/398 (80%)	308 (97%)	11 (3%)	0	100	100
All	All	646/796 (81%)	627 (97%)	19 (3%)	0	100	100

There are no Ramachandran outliers to report.

5.3.2 Protein sidechains [i](#)

In the following table, the Percentiles column shows the percent sidechain outliers of the chain as a percentile score with respect to all X-ray entries followed by that with respect to entries of similar resolution.

The Analysed column shows the number of residues for which the sidechain conformation was analysed, and the total number of residues.

Mol	Chain	Analysed	Rotameric	Outliers	Percentiles	
1	A	298/358 (83%)	285 (96%)	13 (4%)	35	46

Continued on next page...

Continued from previous page...

Mol	Chain	Analysed	Rotameric	Outliers	Percentiles	
2	B	291/358 (81%)	281 (97%)	10 (3%)	44	59
All	All	589/716 (82%)	566 (96%)	23 (4%)	39	53

All (23) residues with a non-rotameric sidechain are listed below:

Mol	Chain	Res	Type
1	A	155	ARG
1	A	163	GLU
1	A	172	ASP
1	A	204	ASP
1	A	351	MET
1	A	360	MET
1	A	364	LYS
1	A	366	VAL
1	A	378	THR
1	A	429	SER
1	A	456	GLU
1	A	470	LEU
1	A	477	ARG
2	B	178	LEU
2	B	183	VAL
2	B	204	ASP
2	B	295	LEU
2	B	326	LEU
2	B	424	ARG
2	B	429	SER
2	B	460	ASP
2	B	469	ILE
2	B	470	LEU

Some sidechains can be flipped to improve hydrogen bonding and reduce clashes. All (3) such sidechains are listed below:

Mol	Chain	Res	Type
1	A	382	GLN
1	A	416	GLN
2	B	467	GLN

5.3.3 RNA ⓘ

There are no RNA molecules in this entry.

5.4 Non-standard residues in protein, DNA, RNA chains ⓘ

4 non-standard protein/DNA/RNA residues are modelled in this entry.

In the following table, the Counts columns list the number of bonds (or angles) for which Mogul statistics could be retrieved, the number of bonds (or angles) that are observed in the model and the number of bonds (or angles) that are defined in the chemical component dictionary. The Link column lists molecule types, if any, to which the group is linked. The Z score for a bond length (or angle) is the number of standard deviations the observed value is removed from the expected value. A bond length (or angle) with $|Z| > 2$ is considered an outlier worth inspection. RMSZ is the root-mean-square of all Z scores of the bond lengths (or angles).

Mol	Type	Chain	Res	Link	Bond lengths			Bond angles		
					Counts	RMSZ	# Z > 2	Counts	RMSZ	# Z > 2
1	CME	A	194	1	8,9,10	1.44	1 (12%)	6,9,11	1.56	0
1	CME	A	432	1	8,9,10	1.39	1 (12%)	6,9,11	2.27	2 (33%)
2	CME	B	194	2	8,9,10	1.60	1 (12%)	6,9,11	2.35	3 (50%)
2	CME	B	320	2	8,9,10	1.43	1 (12%)	6,9,11	2.07	2 (33%)

In the following table, the Chirals column lists the number of chiral outliers, the number of chiral centers analysed, the number of these observed in the model and the number defined in the chemical component dictionary. Similar counts are reported in the Torsion and Rings columns. '-' means no outliers of that kind were identified.

Mol	Type	Chain	Res	Link	Chirals	Torsions	Rings
1	CME	A	194	1	-	0/5/8/10	0/0/0/0
1	CME	A	432	1	-	0/5/8/10	0/0/0/0
2	CME	B	194	2	-	0/5/8/10	0/0/0/0
2	CME	B	320	2	-	0/5/8/10	0/0/0/0

All (4) bond length outliers are listed below:

Mol	Chain	Res	Type	Atoms	Z	Observed(Å)	Ideal(Å)
2	B	320	CME	OH-CZ	-3.61	1.22	1.42
1	A	432	CME	OH-CZ	-3.54	1.22	1.42
1	A	194	CME	OH-CZ	-3.54	1.22	1.42
2	B	194	CME	OH-CZ	-3.53	1.23	1.42

All (7) bond angle outliers are listed below:

Mol	Chain	Res	Type	Atoms	Z	Observed(°)	Ideal(°)
2	B	194	CME	CA-CB-SG	-2.60	104.80	114.23
2	B	320	CME	O-C-CA	-2.22	119.72	125.49
1	A	432	CME	O-C-CA	-2.08	120.08	125.49

Continued on next page...

Continued from previous page...

Mol	Chain	Res	Type	Atoms	Z	Observed(°)	Ideal(°)
2	B	194	CME	CE-SD-SG	2.30	115.49	103.56
2	B	194	CME	CB-SG-SD	3.68	111.11	103.95
2	B	320	CME	CB-SG-SD	3.77	111.31	103.95
1	A	432	CME	CB-SG-SD	4.62	112.95	103.95

There are no chirality outliers.

There are no torsion outliers.

There are no ring outliers.

No monomer is involved in short contacts.

5.5 Carbohydrates [i](#)

There are no carbohydrates in this entry.

5.6 Ligand geometry [i](#)

Of 6 ligands modelled in this entry, 4 are monoatomic - leaving 2 for Mogul analysis.

In the following table, the Counts columns list the number of bonds (or angles) for which Mogul statistics could be retrieved, the number of bonds (or angles) that are observed in the model and the number of bonds (or angles) that are defined in the chemical component dictionary. The Link column lists molecule types, if any, to which the group is linked. The Z score for a bond length (or angle) is the number of standard deviations the observed value is removed from the expected value. A bond length (or angle) with $|Z| > 2$ is considered an outlier worth inspection. RMSZ is the root-mean-square of all Z scores of the bond lengths (or angles).

Mol	Type	Chain	Res	Link	Bond lengths			Bond angles		
					Counts	RMSZ	# Z > 2	Counts	RMSZ	# Z > 2
5	ROF	A	101	-	25,28,28	2.12	4 (16%)	35,39,39	1.68	8 (22%)
5	ROF	B	102	-	25,28,28	1.82	4 (16%)	35,39,39	2.03	12 (34%)

In the following table, the Chirals column lists the number of chiral outliers, the number of chiral centers analysed, the number of these observed in the model and the number defined in the chemical component dictionary. Similar counts are reported in the Torsion and Rings columns. '-' means no outliers of that kind were identified.

Mol	Type	Chain	Res	Link	Chirals	Torsions	Rings
5	ROF	A	101	-	-	0/15/19/19	0/2/3/3
5	ROF	B	102	-	-	0/15/19/19	0/2/3/3

All (8) bond length outliers are listed below:

Mol	Chain	Res	Type	Atoms	Z	Observed(Å)	Ideal(Å)
5	B	102	ROF	C6-N7	-3.96	1.35	1.43
5	A	101	ROF	C6-N7	-3.74	1.36	1.43
5	B	102	ROF	C13-C12	3.95	1.49	1.40
5	B	102	ROF	C6-C1	4.13	1.46	1.40
5	A	101	ROF	C13-C12	4.16	1.49	1.40
5	B	102	ROF	C6-C5	4.98	1.47	1.40
5	A	101	ROF	C6-C5	5.97	1.49	1.40
5	A	101	ROF	C6-C1	6.03	1.49	1.40

All (20) bond angle outliers are listed below:

Mol	Chain	Res	Type	Atoms	Z	Observed(°)	Ideal(°)
5	B	102	ROF	C1-C2-N3	-3.22	120.25	123.03
5	B	102	ROF	O24-C8-C9	-3.02	115.82	120.97
5	B	102	ROF	C5-C4-N3	-3.00	120.45	123.03
5	A	101	ROF	C1-C2-N3	-2.72	120.68	123.03
5	B	102	ROF	C1-C6-N7	-2.32	118.64	121.21
5	A	101	ROF	O24-C8-C9	-2.29	117.05	120.97
5	B	102	ROF	O19-C13-C12	2.01	120.00	115.78
5	A	101	ROF	C20-O19-C13	2.09	122.28	118.03
5	B	102	ROF	C9-C8-N7	2.41	120.65	115.94
5	A	101	ROF	C9-C8-N7	2.46	120.74	115.94
5	A	101	ROF	C22-C21-C20	2.82	135.69	119.95
5	B	102	ROF	C2-C1-CL25	2.83	121.83	118.69
5	B	102	ROF	C23-C21-C20	2.93	136.30	119.95
5	A	101	ROF	C23-C21-C20	2.95	136.39	119.95
5	B	102	ROF	C22-C21-C20	3.12	137.35	119.95
5	B	102	ROF	C20-O19-C13	3.72	125.59	118.03
5	B	102	ROF	C2-N3-C4	3.80	123.23	117.50
5	A	101	ROF	C2-N3-C4	3.92	123.41	117.50
5	A	101	ROF	C5-C6-N7	4.13	125.78	121.21
5	B	102	ROF	C5-C6-N7	4.90	126.64	121.21

There are no chirality outliers.

There are no torsion outliers.

There are no ring outliers.

2 monomers are involved in 2 short contacts:

Mol	Chain	Res	Type	Clashes	Symm-Clashes
5	A	101	ROF	1	0

Continued on next page...

Continued from previous page...

Mol	Chain	Res	Type	Clashes	Symm-Clashes
5	B	102	ROF	1	0

5.7 Other polymers [i](#)

There are no such residues in this entry.

5.8 Polymer linkage issues [i](#)

There are no chain breaks in this entry.

6 Fit of model and data [i](#)

6.1 Protein, DNA and RNA chains [i](#)

In the following table, the column labelled ‘#RSRZ> 2’ contains the number (and percentage) of RSRZ outliers, followed by percent RSRZ outliers for the chain as percentile scores relative to all X-ray entries and entries of similar resolution. The OWAB column contains the minimum, median, 95th percentile and maximum values of the occupancy-weighted average B-factor per residue. The column labelled ‘Q< 0.9’ lists the number of (and percentage) of residues with an average occupancy less than 0.9.

Mol	Chain	Analysed	<RSRZ>	#RSRZ>2	OWAB(Å ²)	Q<0.9
1	A	329/398 (82%)	0.24	9 (2%) 58 67	21, 31, 49, 62	0
2	B	321/398 (80%)	0.26	10 (3%) 52 62	20, 32, 50, 63	0
All	All	650/796 (81%)	0.25	19 (2%) 55 64	20, 32, 50, 63	0

All (19) RSRZ outliers are listed below:

Mol	Chain	Res	Type	RSRZ
2	B	318	GLU	5.5
2	B	368	SER	4.4
2	B	319	HIS	4.1
1	A	157	GLY	3.2
2	B	375	ASP	3.1
2	B	481	GLN	2.9
2	B	373	LEU	2.7
1	A	371	VAL	2.5
2	B	372	LEU	2.5
1	A	155	ARG	2.5
1	A	373	LEU	2.3
2	B	371	VAL	2.2
1	A	158	VAL	2.1
1	A	160	THR	2.1
1	A	369	SER	2.1
1	A	481	GLN	2.1
2	B	367	THR	2.0
2	B	376	ASN	2.0
1	A	207	LYS	2.0

6.2 Non-standard residues in protein, DNA, RNA chains [i](#)

In the following table, the Atoms column lists the number of modelled atoms in the group and the number defined in the chemical component dictionary. LLDF column lists the quality of electron

density of the group with respect to its neighbouring residues in protein, DNA or RNA chains. The B-factors column lists the minimum, median, 95th percentile and maximum values of B factors of atoms in the group. The column labelled 'Q< 0.9' lists the number of atoms with occupancy less than 0.9.

Mol	Type	Chain	Res	Atoms	RSCC	RSR	LLDF	B-factors(Å ²)	Q<0.9
1	CME	A	194	10/11	0.93	0.13	-	33,35,56,57	0
1	CME	A	432	10/11	0.90	0.16	-	50,53,72,72	0
2	CME	B	320	10/11	0.94	0.19	-	58,60,75,77	0
2	CME	B	194	10/11	0.89	0.10	-	33,36,55,55	0

6.3 Carbohydrates [i](#)

There are no carbohydrates in this entry.

6.4 Ligands [i](#)

In the following table, the Atoms column lists the number of modelled atoms in the group and the number defined in the chemical component dictionary. LLDF column lists the quality of electron density of the group with respect to its neighbouring residues in protein, DNA or RNA chains. The B-factors column lists the minimum, median, 95th percentile and maximum values of B factors of atoms in the group. The column labelled 'Q< 0.9' lists the number of atoms with occupancy less than 0.9.

Mol	Type	Chain	Res	Atoms	RSCC	RSR	LLDF	B-factors(Å ²)	Q<0.9
3	ZN	B	1001	1/1	1.00	0.15	0.13	37,37,37,37	0
5	ROF	B	102	26/26	0.97	0.14	0.13	34,41,50,52	0
3	ZN	A	1001	1/1	1.00	0.16	-0.01	37,37,37,37	0
4	MG	B	1002	1/1	0.98	0.15	-0.27	36,36,36,36	0
5	ROF	A	101	26/26	0.97	0.11	-0.95	41,44,51,52	0
4	MG	A	1002	1/1	0.97	0.12	-1.60	39,39,39,39	0

6.5 Other polymers [i](#)

There are no such residues in this entry.