



Full wwPDB X-ray Structure Validation Report ⓘ

Feb 1, 2016 – 06:39 AM GMT

PDB ID : 2XVQ
Title : HUMAN SERUM ALBUMIN COMPLEXED WITH DANSYL-L-SARCOSINE
Authors : Ryan, A.J.; Curry, S.
Deposited on : 2010-10-27
Resolution : 2.90 Å(reported)

This is a Full wwPDB X-ray Structure Validation Report for a publicly released PDB entry.
We welcome your comments at validation@mail.wwpdb.org
A user guide is available at
<http://wwpdb.org/validation/2016/XrayValidationReportHelp>
with specific help available everywhere you see the ⓘ symbol.

The following versions of software and data (see [references ⓘ](#)) were used in the production of this report:

MolProbity : 4.02b-467
Mogul : 1.7 (RC4), CSD as536be (2015)
Xtriage (Phenix) : 1.9-1692
EDS : rb-20026688
Percentile statistics : 20151230.v01 (using entries in the PDB archive December 30th 2015)
Refmac : 5.8.0135
CCP4 : 6.5.0
Ideal geometry (proteins) : Engh & Huber (2001)
Ideal geometry (DNA, RNA) : Parkinson et al. (1996)
Validation Pipeline (wwPDB-VP) : trunk26865

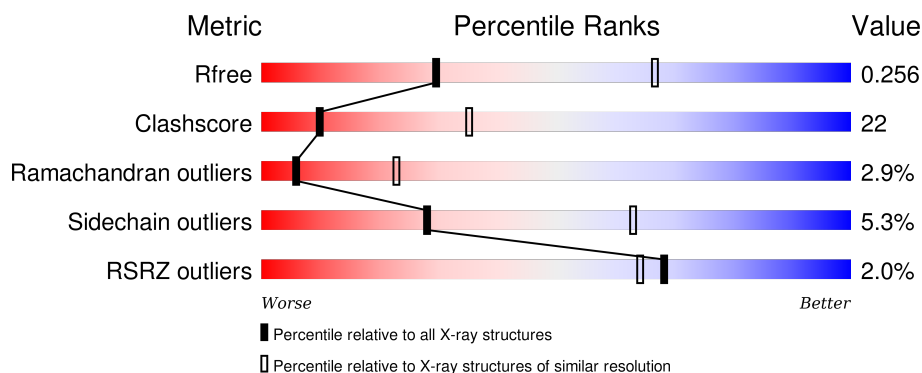
1 Overall quality at a glance

The following experimental techniques were used to determine the structure:

X-RAY DIFFRACTION

The reported resolution of this entry is 2.90 Å.

Percentile scores (ranging between 0-100) for global validation metrics of the entry are shown in the following graphic. The table shows the number of entries on which the scores are based.



Metric	Whole archive (#Entries)	Similar resolution (#Entries, resolution range(Å))
R_{free}	91344	1451 (2.90-2.90)
Clashscore	102246	1668 (2.90-2.90)
Ramachandran outliers	100387	1630 (2.90-2.90)
Sidechain outliers	100360	1632 (2.90-2.90)
RSRZ outliers	91569	1456 (2.90-2.90)

The table below summarises the geometric issues observed across the polymeric chains and their fit to the electron density. The red, orange, yellow and green segments on the lower bar indicate the fraction of residues that contain outliers for ≥ 3 , 2, 1 and 0 types of geometric quality criteria. A grey segment represents the fraction of residues that are not modelled. The numeric value for each fraction is indicated below the corresponding segment, with a dot representing fractions $\leq 5\%$. The upper red bar (where present) indicates the fraction of residues that have poor fit to the electron density. The numeric value is given above the bar.

Mol	Chain	Length	Quality of chain
1	A	585	<div> <div>2%</div> <div>65%</div> <div>29%</div> <div>• •</div> </div>
1	B	585	<div> <div>2%</div> <div>61%</div> <div>32%</div> <div>• •</div> </div>

The following table lists non-polymeric compounds, carbohydrate monomers and non-standard residues in protein, DNA, RNA chains that are outliers for geometric or electron-density-fit criteria:

Mol	Type	Chain	Res	Chirality	Geometry	Clashes	Electron density
2	9DS	B	2001	-	-	-	X

2 Entry composition [i](#)

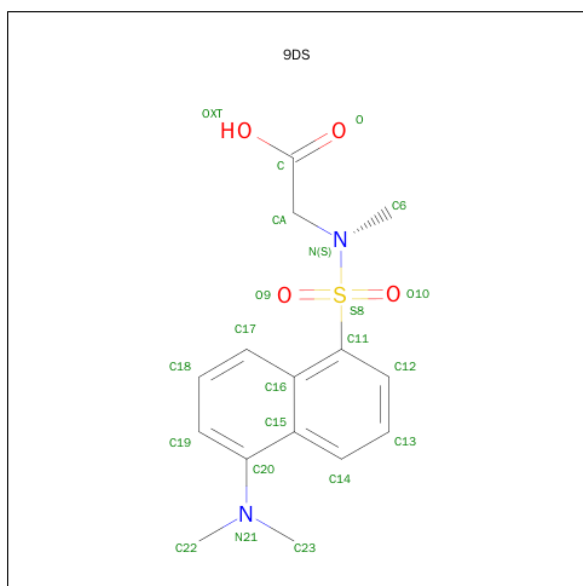
There are 2 unique types of molecules in this entry. The entry contains 8349 atoms, of which 0 are hydrogens and 0 are deuteriums.

In the tables below, the ZeroOcc column contains the number of atoms modelled with zero occupancy, the AltConf column contains the number of residues with at least one atom in alternate conformation and the Trace column contains the number of residues modelled with at most 2 atoms.

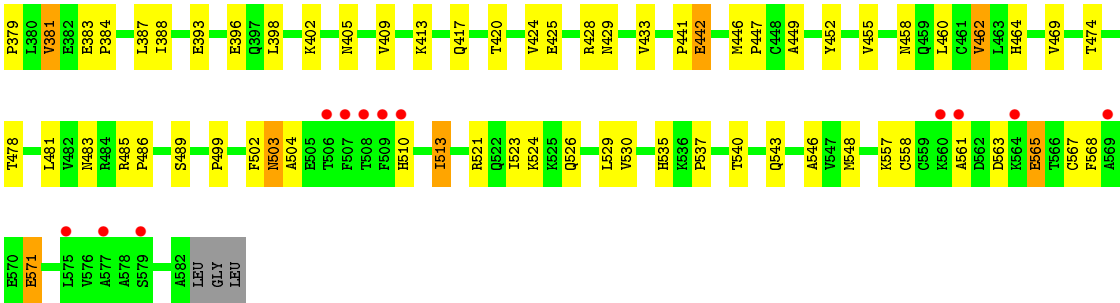
- Molecule 1 is a protein called SERUM ALBUMIN.

Mol	Chain	Residues	Atoms					ZeroOcc	AltConf	Trace
1	A	569	Total	C	N	O	S	0	0	0
			4203	2651	697	815	40			
1	B	566	Total	C	N	O	S	0	0	0
			4102	2583	695	784	40			

- Molecule 2 is DANSYL-L-SARCOSINE (three-letter code: 9DS) (formula: $C_{15}H_{18}N_2O_4S$).



Mol	Chain	Residues	Atoms					ZeroOcc	AltConf
2	A	1	Total	C	N	O	S	0	0
			22	15	2	4	1		
2	B	1	Total	C	N	O	S	0	0
			22	15	2	4	1		



4 Data and refinement statistics

Property	Value	Source
Space group	P 1	Depositor
Cell constants a, b, c, α , β , γ	55.48 Å 55.35 Å 120.74 Å 81.15° 90.21° 65.01°	Depositor
Resolution (Å)	47.53 – 2.90 47.53 – 2.35	Depositor EDS
% Data completeness (in resolution range)	96.9 (47.53-2.90) 91.0 (47.53-2.35)	Depositor EDS
R_{merge}	0.11	Depositor
R_{sym}	(Not available)	Depositor
$\langle I/\sigma(I) \rangle$ ¹	0.00 (at 2.34 Å)	Xtriage
Refinement program	CNS 1.2	Depositor
R, R_{free}	0.220 , 0.257 0.220 , 0.256	Depositor DCC
R_{free} test set	1332 reflections (4.83%)	DCC
Wilson B-factor (Å ²)	68.1	Xtriage
Anisotropy	0.292	Xtriage
Bulk solvent k_{sol} (e/Å ³), B_{sol} (Å ²)	0.27 , 70.1	EDS
Estimated twinning fraction	No twinning to report.	Xtriage
L-test for twinning ²	$\langle L \rangle = 0.48$, $\langle L^2 \rangle = 0.31$	Xtriage
Outliers	0 of 52256 reflections	Xtriage
F_o, F_c correlation	0.94	EDS
Total number of atoms	8349	wwPDB-VP
Average B, all atoms (Å ²)	72.0	wwPDB-VP

Xtriage's analysis on translational NCS is as follows: *The largest off-origin peak in the Patterson function is 5.53% of the height of the origin peak. No significant pseudotranslation is detected.*

¹Intensities estimated from amplitudes.

²Theoretical values of $\langle |L| \rangle$, $\langle L^2 \rangle$ for acentric reflections are 0.5, 0.375 respectively for untwinned datasets, and 0.333, 0.2 for perfectly twinned datasets.

5 Model quality [i](#)

5.1 Standard geometry [i](#)

Bond lengths and bond angles in the following residue types are not validated in this section: 9DS

The Z score for a bond length (or angle) is the number of standard deviations the observed value is removed from the expected value. A bond length (or angle) with $|Z| > 5$ is considered an outlier worth inspection. RMSZ is the root-mean-square of all Z scores of the bond lengths (or angles).

Mol	Chain	Bond lengths		Bond angles	
		RMSZ	$\# Z > 5$	RMSZ	$\# Z > 5$
1	A	0.46	0/4286	0.64	1/5837 (0.0%)
1	B	0.42	0/4182	0.62	0/5702
All	All	0.44	0/8468	0.63	1/11539 (0.0%)

There are no bond length outliers.

All (1) bond angle outliers are listed below:

Mol	Chain	Res	Type	Atoms	Z	Observed(°)	Ideal(°)
1	A	186	ARG	NE-CZ-NH1	-6.71	116.94	120.30

There are no chirality outliers.

There are no planarity outliers.

5.2 Too-close contacts [i](#)

In the following table, the Non-H and H(model) columns list the number of non-hydrogen atoms and hydrogen atoms in the chain respectively. The H(added) column lists the number of hydrogen atoms added and optimized by MolProbity. The Clashes column lists the number of clashes within the asymmetric unit, whereas Symm-Clashes lists symmetry related clashes.

Mol	Chain	Non-H	H(model)	H(added)	Clashes	Symm-Clashes
1	A	4203	0	3768	170	0
1	B	4102	0	3619	177	0
2	A	22	0	17	1	0
2	B	22	0	17	3	0
All	All	8349	0	7421	349	0

The all-atom clashscore is defined as the number of clashes found per 1000 atoms (including hydrogen atoms). The all-atom clashscore for this structure is 22.

All (349) close contacts within the same asymmetric unit are listed below, sorted by their clash magnitude.

Atom-1	Atom-2	Interatomic distance (Å)	Clash overlap (Å)
1:A:183:ASP:HA	1:A:186:ARG:HH12	1.09	1.17
1:A:183:ASP:HA	1:A:186:ARG:NH1	1.63	1.13
1:B:433:VAL:HG22	1:B:452:TYR:CD2	1.95	1.01
1:B:433:VAL:HG22	1:B:452:TYR:HD2	1.20	1.01
1:A:540:THR:HG23	1:A:543:GLN:NE2	1.85	0.91
1:B:503:ASN:N	1:B:503:ASN:HD22	1.68	0.89
1:A:383:GLU:HB3	1:A:384:PRO:HD3	1.56	0.88
1:A:183:ASP:CA	1:A:186:ARG:HH12	1.85	0.88
1:A:433:VAL:HG22	1:A:452:TYR:CD2	2.09	0.88
1:B:120:VAL:HG21	1:B:175:ALA:HA	1.54	0.87
1:A:218:ARG:NH2	1:A:222:ARG:HH21	1.73	0.86
1:A:424:VAL:O	1:A:428:ARG:HG3	1.75	0.85
1:B:364:ALA:O	1:B:366:PRO:HD3	1.77	0.85
1:B:57:GLU:HG3	1:B:58:SER:H	1.42	0.85
1:A:64:LYS:HB3	1:A:68:THR:HG21	1.58	0.83
1:A:65:SER:O	1:A:68:THR:HG22	1.78	0.83
1:B:529:LEU:HB2	1:B:548:MET:HE3	1.60	0.83
1:B:5:SER:OG	1:B:62:CYS:HB3	1.78	0.82
1:A:262:LYS:HB3	1:A:262:LYS:HZ2	1.43	0.82
1:A:37:GLU:N	1:A:37:GLU:OE1	2.14	0.81
1:A:322:ALA:HB1	1:A:325:VAL:HG23	1.63	0.80
1:B:151:ALA:HB3	1:B:152:PRO:HD3	1.63	0.80
1:B:567:CYS:SG	1:B:571:GLU:HG3	2.22	0.80
1:B:424:VAL:O	1:B:428:ARG:HG3	1.81	0.79
1:B:458:ASN:O	1:B:462:VAL:HG22	1.82	0.79
1:A:120:VAL:HG11	1:A:174:LYS:HB2	1.65	0.78
1:B:510:HIS:O	1:B:513:ILE:HG23	1.82	0.78
1:A:315:VAL:HG21	1:A:370:TYR:CZ	2.20	0.77
1:B:26:ALA:HB2	1:B:250:LEU:HD12	1.66	0.77
1:B:127:PHE:CD2	1:B:165:PHE:HB3	2.19	0.77
1:B:503:ASN:ND2	1:B:503:ASN:N	2.30	0.76
1:A:485:ARG:HB3	1:A:486:PRO:HD3	1.68	0.75
1:A:262:LYS:HB3	1:A:262:LYS:NZ	2.00	0.75
1:A:151:ALA:HB3	1:A:152:PRO:HD3	1.69	0.74
1:B:59:ALA:HB3	1:B:62:CYS:SG	2.28	0.73
1:A:384:PRO:O	1:A:388:ILE:HG12	1.88	0.72
1:B:283:LEU:O	1:B:286:LYS:HB3	1.90	0.72
1:A:433:VAL:HG22	1:A:452:TYR:HD2	1.53	0.72
1:A:66:LEU:O	1:A:70:PHE:HD2	1.72	0.71
1:B:345:LEU:HD22	1:B:446:MET:HE1	1.73	0.71

Continued on next page...

Continued from previous page...

Atom-1	Atom-2	Interatomic distance (Å)	Clash overlap (Å)
1:A:356:THR:HG21	1:A:373:VAL:HG22	1.72	0.70
1:B:115:LEU:CB	1:B:145:ARG:HH12	2.04	0.70
1:B:489:SER:HA	2:B:2001:9DS:O	1.92	0.70
1:A:135:LEU:HD11	1:A:162:LYS:HG3	1.75	0.69
1:A:548:MET:CE	1:A:548:MET:HA	2.22	0.69
1:B:116:VAL:O	1:B:118:PRO:HD3	1.93	0.69
1:B:446:MET:HB3	1:B:447:PRO:HD3	1.76	0.68
1:B:405:ASN:O	1:B:409:VAL:HG23	1.93	0.68
1:A:224:PRO:HB2	1:A:299:PRO:HD3	1.77	0.67
1:A:414:LYS:O	1:A:472:ARG:NH1	2.28	0.67
1:B:100:GLU:O	1:B:104:GLN:HG3	1.95	0.67
1:B:510:HIS:HA	1:B:568:PHE:CD1	2.30	0.67
1:B:510:HIS:HA	1:B:568:PHE:HD1	1.60	0.66
1:A:183:ASP:CA	1:A:186:ARG:NH1	2.51	0.66
1:A:529:LEU:O	1:A:533:VAL:HG23	1.96	0.66
1:B:120:VAL:HG21	1:B:175:ALA:CA	2.25	0.66
1:A:25:ILE:O	1:A:29:GLN:HG3	1.96	0.66
1:B:502:PHE:C	1:B:503:ASN:HD22	1.99	0.66
1:B:558:CYS:SG	1:B:571:GLU:HB2	2.36	0.66
1:A:49:PHE:O	1:A:49:PHE:HD1	1.79	0.65
1:B:327:LEU:HD11	1:B:354:GLU:HB2	1.78	0.65
1:B:265:CYS:O	1:B:268:GLN:HG3	1.96	0.65
1:B:29:GLN:HG2	1:B:143:ALA:O	1.97	0.65
1:B:290:ILE:O	1:B:293:VAL:HG12	1.97	0.65
1:B:417:GLN:HB3	1:B:469:VAL:HG13	1.79	0.65
1:A:522:GLN:O	1:A:526:GLN:HG3	1.98	0.64
1:A:120:VAL:HG21	1:A:175:ALA:HA	1.78	0.64
1:B:499:PRO:HB3	1:B:535:HIS:O	1.97	0.64
1:A:467:THR:O	1:A:467:THR:HG23	1.98	0.64
1:A:68:THR:HG23	1:A:69:LEU:N	2.13	0.63
1:B:67:HIS:ND1	1:B:99:ASN:OD1	2.31	0.63
1:A:14:LEU:HD13	1:A:22:LEU:HD12	1.79	0.63
1:A:567:CYS:SG	1:A:571:GLU:HB2	2.39	0.63
1:A:218:ARG:HH21	1:A:222:ARG:HH21	1.43	0.62
1:A:5:SER:HA	1:A:62:CYS:O	1.99	0.62
1:A:315:VAL:HG21	1:A:370:TYR:OH	2.00	0.62
1:B:99:ASN:C	1:B:99:ASN:HD22	2.02	0.62
1:A:49:PHE:HE1	1:A:53:CYS:SG	2.23	0.62
1:B:70:PHE:HD1	1:B:70:PHE:H	1.48	0.61
1:B:388:ILE:HD12	1:B:449:ALA:CB	2.30	0.61
1:B:157:PHE:HZ	1:B:188:GLU:HG2	1.65	0.61

Continued on next page...

Continued from previous page...

Atom-1	Atom-2	Interatomic distance (Å)	Clash overlap (Å)
1:B:383:GLU:HB3	1:B:384:PRO:HD3	1.82	0.61
1:B:106:LYS:HD3	1:B:147:PRO:HB2	1.82	0.60
1:B:117:ARG:NH2	1:B:182:LEU:HB3	2.17	0.60
1:A:179:LEU:HB2	1:A:180:PRO:HD3	1.84	0.60
1:B:311:GLU:O	1:B:367:HIS:HE1	1.84	0.60
1:A:23:VAL:HG13	1:A:70:PHE:HE1	1.66	0.60
1:A:512:ASP:O	1:A:515:THR:HG22	2.02	0.60
1:A:420:THR:HG23	1:A:530:VAL:HG11	1.84	0.60
1:A:419:SER:HB2	1:A:421:PRO:HD2	1.84	0.60
1:B:42:LEU:O	1:B:46:VAL:HG23	2.02	0.59
1:B:483:ASN:O	1:B:486:PRO:HD2	2.02	0.59
1:A:280:GLU:CG	1:A:280:GLU:O	2.50	0.59
1:A:502:PHE:N	1:A:535:HIS:CE1	2.69	0.59
1:B:502:PHE:HA	1:B:535:HIS:NE2	2.17	0.59
1:B:565:GLU:O	1:B:568:PHE:HB3	2.02	0.59
1:B:66:LEU:O	1:B:70:PHE:CD1	2.55	0.59
1:B:225:LYS:HG2	1:B:299:PRO:HG3	1.83	0.59
1:B:540:THR:CG2	1:B:543:GLN:HB3	2.32	0.59
1:A:540:THR:CG2	1:A:543:GLN:NE2	2.64	0.59
1:B:285:GLU:O	1:B:289:CYS:HB2	2.02	0.59
1:A:510:HIS:HA	1:A:568:PHE:CB	2.32	0.59
1:A:39:HIS:O	1:A:43:VAL:HG23	2.02	0.59
1:A:305:LEU:HD21	1:A:333:GLU:HB3	1.85	0.58
1:B:540:THR:HG23	1:B:543:GLN:H	1.68	0.58
1:A:424:VAL:HG21	1:A:527:THR:HG23	1.85	0.58
1:B:119:GLU:OE1	1:B:119:GLU:N	2.36	0.58
1:B:132:GLU:OE1	1:B:132:GLU:N	2.35	0.58
1:B:540:THR:HG23	1:B:543:GLN:HB3	1.85	0.58
1:B:557:LYS:CB	1:B:571:GLU:OE1	2.51	0.58
1:A:540:THR:HG23	1:A:543:GLN:HE21	1.66	0.58
1:B:513:ILE:HG13	1:B:513:ILE:O	2.03	0.58
1:B:327:LEU:CD1	1:B:354:GLU:HB2	2.34	0.58
1:A:30:TYR:CD2	1:A:102:PHE:HB3	2.39	0.58
1:B:206:PHE:CD2	1:B:481:LEU:HD22	2.38	0.58
1:B:420:THR:O	1:B:424:VAL:HG23	2.03	0.58
1:A:208:GLU:O	1:A:212:LYS:HG3	2.03	0.57
1:B:429:ASN:H	1:B:429:ASN:HD22	1.50	0.57
1:A:183:ASP:HB3	1:A:186:ARG:HH22	1.69	0.57
1:B:543:GLN:O	1:B:546:ALA:HB3	2.03	0.57
1:B:474:THR:O	1:B:478:THR:HG23	2.03	0.57
1:B:179:LEU:CB	1:B:180:PRO:HD3	2.35	0.57

Continued on next page...

Continued from previous page...

Atom-1	Atom-2	Interatomic distance (Å)	Clash overlap (Å)
1:B:113:PRO:O	1:B:145:ARG:NH2	2.38	0.57
1:B:39:HIS:O	1:B:43:VAL:HG23	2.03	0.57
1:B:240:LYS:O	1:B:244:GLU:HG3	2.05	0.57
1:A:49:PHE:CE1	1:A:53:CYS:SG	2.99	0.56
1:A:169:CYS:HA	1:A:174:LYS:HD3	1.86	0.56
1:B:224:PRO:HD2	1:B:296:ASP:HB3	1.87	0.56
1:A:156:PHE:HE1	1:A:285:GLU:HG3	1.71	0.56
1:A:42:LEU:O	1:A:46:VAL:HG23	2.06	0.56
1:A:43:VAL:O	1:A:47:THR:HG23	2.05	0.56
1:A:322:ALA:HB1	1:A:325:VAL:CG2	2.36	0.55
1:B:153:GLU:OE2	1:B:288:HIS:ND1	2.38	0.55
1:A:502:PHE:H	1:A:535:HIS:CE1	2.24	0.55
1:B:314:ASP:HB3	1:B:318:ASN:OD1	2.07	0.55
1:A:525:LYS:HG2	1:A:551:PHE:CD2	2.41	0.55
1:A:49:PHE:HD1	1:A:49:PHE:C	2.10	0.55
1:B:370:TYR:HD1	1:B:370:TYR:O	1.90	0.55
1:B:11:PHE:CD2	1:B:50:ALA:HB1	2.42	0.55
1:B:345:LEU:HD22	1:B:446:MET:CE	2.36	0.55
1:A:315:VAL:CG2	1:A:370:TYR:OH	2.55	0.55
1:B:66:LEU:O	1:B:70:PHE:HD1	1.89	0.55
1:A:233:LYS:CE	1:A:263:TYR:HE2	2.20	0.55
1:A:214:TRP:CD1	1:A:343:VAL:HG11	2.42	0.55
1:B:521:ARG:O	1:B:524:LYS:HB2	2.06	0.55
1:A:370:TYR:HD1	1:A:370:TYR:O	1.91	0.54
1:B:127:PHE:CE1	1:B:131:GLU:HB2	2.42	0.54
1:B:529:LEU:HD13	1:B:548:MET:CE	2.38	0.54
1:B:212:LYS:O	1:B:216:VAL:HG23	2.06	0.54
1:A:107:ASP:OD2	1:A:110:PRO:HA	2.08	0.54
1:B:110:PRO:HB2	1:B:112:LEU:HD22	1.88	0.54
1:A:183:ASP:CB	1:A:186:ARG:HH12	2.21	0.53
1:A:96:PRO:HG2	1:A:97:GLU:H	1.73	0.53
1:B:26:ALA:CB	1:B:250:LEU:HD12	2.38	0.53
1:B:311:GLU:O	1:B:367:HIS:CE1	2.60	0.53
1:A:263:TYR:CD1	1:A:263:TYR:C	2.81	0.53
1:A:49:PHE:CD1	1:A:49:PHE:C	2.82	0.53
1:B:68:THR:HG22	1:B:69:LEU:N	2.24	0.53
1:A:224:PRO:HD2	1:A:296:ASP:HB3	1.90	0.53
1:A:64:LYS:HB3	1:A:68:THR:CG2	2.35	0.53
1:A:502:PHE:N	1:A:535:HIS:HE1	2.06	0.53
1:B:119:GLU:N	1:B:119:GLU:CD	2.63	0.52
1:A:376:GLU:O	1:A:379:PRO:HD2	2.09	0.52

Continued on next page...

Continued from previous page...

Atom-1	Atom-2	Interatomic distance (Å)	Clash overlap (Å)
1:B:230:GLU:HA	1:B:230:GLU:OE1	2.09	0.52
1:B:117:ARG:HH22	1:B:182:LEU:HB3	1.74	0.52
1:B:119:GLU:H	1:B:119:GLU:CD	2.13	0.52
1:B:10:ARG:O	1:B:14:LEU:HD23	2.09	0.52
1:A:502:PHE:H	1:A:535:HIS:HE1	1.58	0.52
1:B:425:GLU:O	1:B:429:ASN:ND2	2.41	0.52
1:B:168:CYS:SG	1:B:177:CYS:C	2.87	0.52
1:B:206:PHE:CE2	1:B:481:LEU:HD13	2.45	0.51
1:B:127:PHE:CE2	1:B:165:PHE:HB3	2.44	0.51
1:A:394:LEU:HD23	1:A:403:PHE:HE1	1.75	0.51
1:A:525:LYS:HG2	1:A:551:PHE:CE2	2.46	0.51
1:B:561:ALA:HB3	1:B:563:ASP:OD1	2.10	0.51
1:A:394:LEU:HD23	1:A:403:PHE:CE1	2.45	0.51
1:A:265:CYS:SG	1:A:286:LYS:HD2	2.50	0.51
1:B:376:GLU:O	1:B:379:PRO:HD2	2.10	0.51
1:B:502:PHE:CZ	1:B:504:ALA:HA	2.45	0.51
1:A:68:THR:HG23	1:A:69:LEU:H	1.75	0.51
1:A:66:LEU:O	1:A:70:PHE:CD2	2.59	0.51
1:B:117:ARG:HG3	1:B:117:ARG:O	2.10	0.51
1:A:390:GLN:O	1:A:393:GLU:N	2.43	0.51
1:A:425:GLU:OE1	1:A:425:GLU:HA	2.11	0.51
1:B:237:ASP:CB	1:B:260:LEU:HD12	2.40	0.51
1:A:401:TYR:CE1	1:A:522:GLN:HB3	2.46	0.50
1:A:383:GLU:HB3	1:A:384:PRO:CD	2.37	0.50
1:B:286:LYS:O	1:B:290:ILE:HG13	2.12	0.50
1:A:183:ASP:OD1	1:A:186:ARG:NH1	2.44	0.50
1:A:501:GLU:HA	1:A:501:GLU:OE1	2.10	0.50
1:B:194:ALA:HB1	1:B:455:VAL:CG1	2.41	0.50
1:A:370:TYR:O	1:A:373:VAL:HG23	2.10	0.50
1:A:29:GLN:HG2	1:A:143:ALA:O	2.12	0.50
1:A:567:CYS:O	1:A:571:GLU:N	2.43	0.50
1:A:290:ILE:O	1:A:293:VAL:HG12	2.12	0.50
1:A:293:VAL:HG22	1:A:294:GLU:N	2.27	0.50
1:B:272:SER:HB3	1:B:275:LEU:HG	1.94	0.50
1:B:120:VAL:HG21	1:B:175:ALA:CB	2.42	0.49
1:A:25:ILE:HD13	1:A:154:LEU:HD23	1.94	0.49
1:B:523:ILE:O	1:B:523:ILE:HG22	2.12	0.49
1:A:72:ASP:O	1:A:76:THR:HG23	2.12	0.49
1:A:373:VAL:O	1:A:376:GLU:HB2	2.13	0.49
1:B:23:VAL:O	1:B:27:PHE:CD1	2.65	0.49
1:B:70:PHE:CD1	1:B:70:PHE:N	2.80	0.49

Continued on next page...

Continued from previous page...

Atom-1	Atom-2	Interatomic distance (Å)	Clash overlap (Å)
1:B:157:PHE:CZ	1:B:188:GLU:HG2	2.47	0.49
1:A:386:ASN:O	1:A:390:GLN:HG3	2.13	0.49
1:A:95:GLU:CB	1:A:96:PRO:CD	2.90	0.48
1:B:433:VAL:HG22	1:B:452:TYR:CE2	2.45	0.48
1:B:5:SER:OG	1:B:62:CYS:O	2.23	0.48
1:B:282:PRO:O	1:B:283:LEU:C	2.52	0.48
1:A:333:GLU:O	1:A:336:ARG:HG2	2.13	0.48
1:B:27:PHE:CD2	1:B:74:LEU:HD21	2.49	0.48
1:B:57:GLU:O	1:B:58:SER:C	2.52	0.48
1:A:420:THR:O	1:A:424:VAL:HG23	2.14	0.48
1:B:485:ARG:HB3	1:B:486:PRO:HD3	1.96	0.48
1:A:322:ALA:CB	1:A:325:VAL:HG23	2.41	0.48
1:B:117:ARG:NH2	1:B:182:LEU:HD12	2.29	0.48
1:B:237:ASP:HB2	1:B:260:LEU:HD12	1.96	0.48
1:A:218:ARG:CZ	1:A:222:ARG:HH21	2.27	0.47
1:B:345:LEU:HD21	1:B:381:VAL:HG22	1.96	0.47
1:B:483:ASN:C	1:B:486:PRO:HD2	2.34	0.47
1:A:206:PHE:CD2	1:A:481:LEU:HD22	2.49	0.47
1:B:319:TYR:O	1:B:323:LYS:HD3	2.13	0.47
1:A:27:PHE:CE1	1:A:70:PHE:HD1	2.32	0.47
1:B:398:LEU:HB3	1:B:402:LYS:HB2	1.96	0.47
1:B:127:PHE:HE1	1:B:131:GLU:HB2	1.79	0.47
1:B:367:HIS:O	1:B:371:ALA:HB2	2.14	0.47
1:B:320:ALA:HA	1:B:323:LYS:HE2	1.96	0.47
1:A:555:VAL:O	1:A:559:CYS:HB2	2.14	0.47
1:B:388:ILE:HA	2:B:2001:9DS:H19	1.97	0.47
1:B:99:ASN:ND2	1:B:103:LEU:HD12	2.30	0.47
1:B:460:LEU:HD12	1:B:460:LEU:O	2.14	0.47
1:A:42:LEU:HD22	1:A:73:LYS:HG3	1.97	0.47
1:B:349:LEU:HD22	1:B:377:PHE:CG	2.50	0.47
1:A:370:TYR:CD1	1:A:370:TYR:C	2.88	0.46
1:B:384:PRO:O	1:B:388:ILE:HG12	2.15	0.46
1:B:310:VAL:HG21	1:B:374:PHE:CE2	2.50	0.46
1:B:9:HIS:CD2	1:B:13:ASP:OD2	2.68	0.46
1:B:370:TYR:O	1:B:370:TYR:CD1	2.69	0.46
1:B:223:PHE:CD1	1:B:272:SER:HB2	2.51	0.46
1:A:223:PHE:CD1	1:A:272:SER:HB2	2.50	0.46
1:A:26:ALA:O	1:A:30:TYR:HD1	1.98	0.46
1:B:409:VAL:O	1:B:413:LYS:HG3	2.15	0.46
1:A:263:TYR:CE1	1:A:267:ASN:OD1	2.68	0.46
1:A:89:ASP:O	1:A:92:ALA:HB3	2.16	0.46

Continued on next page...

Continued from previous page...

Atom-1	Atom-2	Interatomic distance (Å)	Clash overlap (Å)
1:B:458:ASN:O	1:B:462:VAL:CG2	2.61	0.46
1:A:174:LYS:O	1:A:177:CYS:N	2.47	0.46
1:A:135:LEU:HD11	1:A:162:LYS:CG	2.46	0.46
1:A:403:PHE:CE2	1:A:407:LEU:HD11	2.51	0.46
1:A:56:ASP:O	1:A:58:SER:N	2.42	0.46
1:A:551:PHE:HA	1:A:554:PHE:CD2	2.51	0.46
1:A:56:ASP:C	1:A:58:SER:H	2.19	0.46
1:B:388:ILE:HD12	1:B:449:ALA:HB1	1.97	0.45
1:A:531:GLU:HA	1:A:531:GLU:OE1	2.16	0.45
1:A:370:TYR:CD1	1:A:370:TYR:O	2.70	0.45
1:A:9:HIS:C	1:A:9:HIS:HD1	2.20	0.45
1:A:262:LYS:CB	1:A:262:LYS:NZ	2.67	0.45
1:A:120:VAL:HG21	1:A:175:ALA:CA	2.45	0.45
1:A:168:CYS:SG	1:A:177:CYS:C	2.94	0.45
1:A:501:GLU:HA	1:A:535:HIS:HE1	1.81	0.45
1:A:507:PHE:N	1:A:507:PHE:CD1	2.84	0.45
1:B:387:LEU:HD12	1:B:387:LEU:HA	1.83	0.45
1:B:57:GLU:OE1	1:B:57:GLU:HA	2.16	0.45
1:A:174:LYS:O	1:A:175:ALA:C	2.56	0.45
1:A:523:ILE:O	1:A:527:THR:OG1	2.35	0.45
1:A:263:TYR:O	1:A:263:TYR:HD1	1.99	0.45
1:A:37:GLU:OE1	1:A:37:GLU:CA	2.65	0.44
1:A:233:LYS:HE2	1:A:263:TYR:HE2	1.82	0.44
1:A:400:GLU:O	1:A:404:GLN:HG3	2.17	0.44
1:A:5:SER:HB3	1:A:57:GLU:HG3	1.98	0.44
1:A:412:THR:O	1:A:416:PRO:HG3	2.18	0.44
1:A:420:THR:HG22	1:A:527:THR:HG22	1.99	0.44
1:A:68:THR:CG2	1:A:69:LEU:N	2.79	0.44
1:A:310:VAL:O	1:A:370:TYR:HE1	2.00	0.44
1:A:208:GLU:CD	1:A:212:LYS:HE3	2.38	0.44
1:B:98:ARG:O	1:B:101:CYS:HB3	2.18	0.44
1:A:420:THR:HG23	1:A:530:VAL:CG1	2.48	0.44
1:B:74:LEU:C	1:B:76:THR:H	2.19	0.44
1:A:511:ALA:O	1:A:514:CYS:SG	2.76	0.44
1:B:57:GLU:HG3	1:B:58:SER:N	2.23	0.44
1:B:99:ASN:C	1:B:99:ASN:ND2	2.70	0.44
1:B:228:PHE:HB2	1:B:332:TYR:CE2	2.52	0.43
1:B:32:GLN:HG2	1:B:144:ARG:O	2.19	0.43
1:B:9:HIS:HD2	1:B:13:ASP:OD2	2.02	0.43
1:A:388:ILE:HD12	1:A:449:ALA:CB	2.48	0.43
1:B:43:VAL:O	1:B:46:VAL:HB	2.19	0.43

Continued on next page...

Continued from previous page...

Atom-1	Atom-2	Interatomic distance (Å)	Clash overlap (Å)
1:B:331:LEU:HD13	1:B:350:ALA:HB2	2.01	0.43
1:B:103:LEU:C	1:B:105:HIS:H	2.22	0.43
1:B:222:ARG:HA	1:B:295:ASN:OD1	2.18	0.43
1:B:214:TRP:CD1	1:B:343:VAL:HG11	2.54	0.43
1:B:535:HIS:C	1:B:537:PRO:HD3	2.38	0.43
1:B:370:TYR:C	1:B:370:TYR:CD1	2.91	0.43
1:B:61:ASN:HB3	1:B:64:LYS:CD	2.48	0.43
1:A:208:GLU:OE2	1:A:212:LYS:NZ	2.49	0.43
1:B:127:PHE:O	1:B:131:GLU:HB3	2.19	0.42
1:B:429:ASN:HD22	1:B:429:ASN:N	2.17	0.42
1:A:548:MET:HE1	1:A:548:MET:HA	1.97	0.42
1:B:25:ILE:O	1:B:29:GLN:HG3	2.19	0.42
1:B:99:ASN:HD22	1:B:103:LEU:HD12	1.84	0.42
1:A:208:GLU:OE2	1:A:212:LYS:HE3	2.20	0.42
1:A:90:CYS:SG	1:A:105:HIS:CD2	3.12	0.42
1:B:58:SER:O	1:B:58:SER:OG	2.32	0.42
1:A:433:VAL:HG22	1:A:452:TYR:CE2	2.54	0.42
1:B:405:ASN:OD1	1:B:526:GLN:HG2	2.20	0.42
1:B:218:ARG:NH2	1:B:222:ARG:HH21	2.17	0.42
1:B:57:GLU:CG	1:B:58:SER:H	2.20	0.42
1:B:5:SER:HA	1:B:62:CYS:O	2.19	0.42
1:B:115:LEU:CB	1:B:145:ARG:NH1	2.79	0.42
2:A:2001:9DS:O10	2:A:2001:9DS:H17	2.19	0.42
1:A:530:VAL:CG1	1:A:534:LYS:HE3	2.50	0.42
1:B:151:ALA:HB3	1:B:152:PRO:CD	2.43	0.42
1:B:420:THR:HG23	1:B:530:VAL:HG11	2.01	0.42
1:B:154:LEU:O	1:B:154:LEU:HD12	2.20	0.42
1:A:530:VAL:HG12	1:A:531:GLU:N	2.34	0.41
1:A:576:VAL:HA	1:A:579:SER:HB2	2.02	0.41
1:B:314:ASP:O	1:B:315:VAL:C	2.58	0.41
1:A:109:ASN:HA	1:A:109:ASN:HD22	1.63	0.41
1:A:441:PRO:O	1:A:442:GLU:C	2.58	0.41
1:A:25:ILE:CD1	1:A:154:LEU:HD23	2.50	0.41
1:A:30:TYR:CE2	1:A:102:PHE:HB3	2.55	0.41
1:B:16:GLU:O	1:B:20:LYS:HG3	2.21	0.41
1:B:378:LYS:CB	1:B:379:PRO:HD3	2.50	0.41
1:A:113:PRO:O	1:A:114:ARG:C	2.56	0.41
1:B:255:ASP:O	1:B:258:ALA:HB3	2.20	0.41
1:A:306:ALA:HA	1:A:310:VAL:HG13	2.01	0.41
2:B:2001:9DS:O10	2:B:2001:9DS:H17	2.21	0.41
1:A:387:LEU:HA	1:A:387:LEU:HD12	1.91	0.41

Continued on next page...

Continued from previous page...

Atom-1	Atom-2	Interatomic distance (Å)	Clash overlap (Å)
1:B:417:GLN:CB	1:B:469:VAL:HG13	2.48	0.41
1:B:151:ALA:CB	1:B:152:PRO:HD3	2.44	0.41
1:A:415:VAL:HG23	1:A:415:VAL:O	2.20	0.41
1:A:183:ASP:CB	1:A:186:ARG:HH22	2.34	0.41
1:A:68:THR:CG2	1:A:69:LEU:H	2.34	0.41
1:B:117:ARG:NH2	1:B:182:LEU:CD1	2.84	0.41
1:B:42:LEU:HA	1:B:42:LEU:HD23	1.87	0.41
1:A:233:LYS:CE	1:A:263:TYR:CE2	3.03	0.41
1:B:263:TYR:CD1	1:B:263:TYR:C	2.94	0.41
1:A:447:PRO:O	1:A:451:ASP:HB2	2.21	0.41
1:A:34:CYS:HA	1:A:35:PRO:HD3	1.80	0.41
1:B:441:PRO:O	1:B:442:GLU:C	2.59	0.41
1:B:171:ALA:O	1:B:172:ALA:C	2.60	0.41
1:B:323:LYS:HG2	1:B:323:LYS:H	1.56	0.41
1:A:367:HIS:O	1:A:371:ALA:HB2	2.21	0.40
1:A:464:HIS:HE1	1:A:470:SER:H	1.66	0.40
1:A:325:VAL:O	1:A:329:MET:HG3	2.21	0.40
1:B:464:HIS:CE1	1:B:469:VAL:H	2.40	0.40
1:B:182:LEU:HA	1:B:182:LEU:HD22	1.77	0.40
1:A:9:HIS:ND1	1:A:13:ASP:OD2	2.54	0.40
1:A:252:GLU:H	1:A:252:GLU:CD	2.15	0.40
1:A:35:PRO:HD2	1:A:38:ASP:OD2	2.21	0.40

There are no symmetry-related clashes.

5.3 Torsion angles [i](#)

5.3.1 Protein backbone [i](#)

In the following table, the Percentiles column shows the percent Ramachandran outliers of the chain as a percentile score with respect to all X-ray entries followed by that with respect to entries of similar resolution.

The Analysed column shows the number of residues for which the backbone conformation was analysed, and the total number of residues.

Mol	Chain	Analysed	Favoured	Allowed	Outliers	Percentiles	
1	A	565/585 (97%)	502 (89%)	44 (8%)	19 (3%)	5	19
1	B	562/585 (96%)	484 (86%)	64 (11%)	14 (2%)	7	27
All	All	1127/1170 (96%)	986 (88%)	108 (10%)	33 (3%)	6	23

All (33) Ramachandran outliers are listed below:

Mol	Chain	Res	Type
1	A	59	ALA
1	A	60	GLU
1	A	95	GLU
1	A	315	VAL
1	B	300	ALA
1	B	565	GLU
1	A	57	GLU
1	A	300	ALA
1	A	390	GLN
1	A	391	ASN
1	A	438	CYS
1	A	557	LYS
1	B	54	VAL
1	B	57	GLU
1	B	58	SER
1	B	118	PRO
1	B	315	VAL
1	A	129	ASP
1	A	312	SER
1	B	442	GLU
1	A	58	SER
1	A	150	TYR
1	A	303	PRO
1	A	562	ASP
1	B	60	GLU
1	B	147	PRO
1	B	283	LEU
1	B	396	GLU
1	B	276	LYS
1	A	77	VAL
1	B	281	LYS
1	A	180	PRO
1	A	96	PRO

5.3.2 Protein sidechains

In the following table, the Percentiles column shows the percent sidechain outliers of the chain as a percentile score with respect to all X-ray entries followed by that with respect to entries of similar resolution.

The Analysed column shows the number of residues for which the sidechain conformation was analysed, and the total number of residues.

Mol	Chain	Analysed	Rotameric	Outliers	Percentiles	
1	A	408/511 (80%)	390 (96%)	18 (4%)	35	70
1	B	383/511 (75%)	359 (94%)	24 (6%)	22	54
All	All	791/1022 (77%)	749 (95%)	42 (5%)	28	63

All (42) residues with a non-rotameric sidechain are listed below:

Mol	Chain	Res	Type
1	A	37	GLU
1	A	49	PHE
1	A	89	ASP
1	A	109	ASN
1	A	186	ARG
1	A	262	LYS
1	A	263	TYR
1	A	269	ASP
1	A	310	VAL
1	A	315	VAL
1	A	325	VAL
1	A	334	TYR
1	A	442	GLU
1	A	482	VAL
1	A	493	VAL
1	A	527	THR
1	A	540	THR
1	A	549	ASP
1	B	5	SER
1	B	40	VAL
1	B	58	SER
1	B	68	THR
1	B	70	PHE
1	B	95	GLU
1	B	99	ASN
1	B	103	LEU
1	B	111	ASN
1	B	112	LEU
1	B	119	GLU
1	B	157	PHE
1	B	182	LEU
1	B	245	CYS
1	B	299	PRO
1	B	301	ASP
1	B	324	ASP

Continued on next page...

Continued from previous page...

Mol	Chain	Res	Type
1	B	334	TYR
1	B	381	VAL
1	B	393	GLU
1	B	462	VAL
1	B	503	ASN
1	B	513	ILE
1	B	571	GLU

Some sidechains can be flipped to improve hydrogen bonding and reduce clashes. All (16) such sidechains are listed below:

Mol	Chain	Res	Type
1	A	105	HIS
1	A	109	ASN
1	A	111	ASN
1	A	367	HIS
1	A	464	HIS
1	A	483	ASN
1	A	522	GLN
1	A	535	HIS
1	A	543	GLN
1	B	111	ASN
1	B	338	HIS
1	B	367	HIS
1	B	429	ASN
1	B	464	HIS
1	B	483	ASN
1	B	503	ASN

5.3.3 RNA ⓘ

There are no RNA molecules in this entry.

5.4 Non-standard residues in protein, DNA, RNA chains ⓘ

There are no non-standard protein/DNA/RNA residues in this entry.

5.5 Carbohydrates ⓘ

There are no carbohydrates in this entry.

5.6 Ligand geometry

2 ligands are modelled in this entry.

In the following table, the Counts columns list the number of bonds (or angles) for which Mogul statistics could be retrieved, the number of bonds (or angles) that are observed in the model and the number of bonds (or angles) that are defined in the chemical component dictionary. The Link column lists molecule types, if any, to which the group is linked. The Z score for a bond length (or angle) is the number of standard deviations the observed value is removed from the expected value. A bond length (or angle) with $|Z| > 2$ is considered an outlier worth inspection. RMSZ is the root-mean-square of all Z scores of the bond lengths (or angles).

Mol	Type	Chain	Res	Link	Bond lengths			Bond angles		
					Counts	RMSZ	$\# Z > 2$	Counts	RMSZ	$\# Z > 2$
2	9DS	A	2001	-	19,23,23	1.68	3 (15%)	29,34,34	0.86	1 (3%)
2	9DS	B	2001	-	19,23,23	1.64	4 (21%)	29,34,34	1.01	1 (3%)

In the following table, the Chirals column lists the number of chiral outliers, the number of chiral centers analysed, the number of these observed in the model and the number defined in the chemical component dictionary. Similar counts are reported in the Torsion and Rings columns. '-' means no outliers of that kind were identified.

Mol	Type	Chain	Res	Link	Chirals	Torsions	Rings
2	9DS	A	2001	-	-	0/17/20/20	0/2/2/2
2	9DS	B	2001	-	-	0/17/20/20	0/2/2/2

All (7) bond length outliers are listed below:

Mol	Chain	Res	Type	Atoms	Z	Observed(Å)	Ideal(Å)
2	A	2001	9DS	C11-C16	2.24	1.46	1.43
2	B	2001	9DS	C11-C16	2.41	1.47	1.43
2	B	2001	9DS	C12-C11	2.59	1.40	1.37
2	A	2001	9DS	C18-C19	3.03	1.45	1.38
2	B	2001	9DS	C18-C19	3.12	1.45	1.38
2	B	2001	9DS	C16-C15	3.39	1.49	1.43
2	A	2001	9DS	C16-C15	3.71	1.50	1.43

All (2) bond angle outliers are listed below:

Mol	Chain	Res	Type	Atoms	Z	Observed(°)	Ideal(°)
2	B	2001	9DS	C23-N21-C22	-3.27	105.16	115.96
2	A	2001	9DS	C23-N21-C22	-2.73	106.93	115.96

There are no chirality outliers.

There are no torsion outliers.

There are no ring outliers.

2 monomers are involved in 4 short contacts:

Mol	Chain	Res	Type	Clashes	Symm-Clashes
2	A	2001	9DS	1	0
2	B	2001	9DS	3	0

5.7 Other polymers [i](#)

There are no such residues in this entry.

5.8 Polymer linkage issues [i](#)

There are no chain breaks in this entry.

6 Fit of model and data

6.1 Protein, DNA and RNA chains

In the following table, the column labelled ‘#RSRZ> 2’ contains the number (and percentage) of RSRZ outliers, followed by percent RSRZ outliers for the chain as percentile scores relative to all X-ray entries and entries of similar resolution. The OWAB column contains the minimum, median, 95th percentile and maximum values of the occupancy-weighted average B-factor per residue. The column labelled ‘Q< 0.9’ lists the number of (and percentage) of residues with an average occupancy less than 0.9.

Mol	Chain	Analysed	<RSRZ>	#RSRZ>2	OWAB(Å ²)	Q<0.9
1	A	569/585 (97%)	-0.64	11 (1%) 70 66	33, 69, 142, 159	0
1	B	566/585 (96%)	-0.64	12 (2%) 67 62	32, 70, 144, 158	0
All	All	1135/1170 (97%)	-0.64	23 (2%) 68 64	32, 70, 144, 159	0

All (23) RSRZ outliers are listed below:

Mol	Chain	Res	Type	RSRZ
1	A	563	ASP	4.9
1	B	569	ALA	4.8
1	B	510	HIS	4.3
1	B	575	LEU	4.0
1	B	564	LYS	3.6
1	B	508	THR	3.4
1	A	560	LYS	3.0
1	A	88	ALA	2.9
1	A	561	ALA	2.9
1	A	509	PHE	2.9
1	A	562	ASP	2.8
1	A	508	THR	2.6
1	A	582	ALA	2.6
1	B	507	PHE	2.6
1	B	577	ALA	2.5
1	B	509	PHE	2.4
1	A	505	GLU	2.4
1	B	561	ALA	2.4
1	A	554	PHE	2.3
1	A	510	HIS	2.2
1	B	560	LYS	2.2
1	B	579	SER	2.1
1	B	506	THR	2.0

6.2 Non-standard residues in protein, DNA, RNA chains [i](#)

There are no non-standard protein/DNA/RNA residues in this entry.

6.3 Carbohydrates [i](#)

There are no carbohydrates in this entry.

6.4 Ligands [i](#)

In the following table, the Atoms column lists the number of modelled atoms in the group and the number defined in the chemical component dictionary. LLDF column lists the quality of electron density of the group with respect to its neighbouring residues in protein, DNA or RNA chains. The B-factors column lists the minimum, median, 95th percentile and maximum values of B factors of atoms in the group. The column labelled 'Q< 0.9' lists the number of atoms with occupancy less than 0.9.

Mol	Type	Chain	Res	Atoms	RSCC	RSR	LLDF	B-factors(\AA^2)	Q<0.9
2	9DS	B	2001	22/22	0.96	0.20	2.66	59,61,81,84	0
2	9DS	A	2001	22/22	0.97	0.17	1.84	44,48,69,73	0

6.5 Other polymers [i](#)

There are no such residues in this entry.