



Full wwPDB X-ray Structure Validation Report ⓘ

Feb 1, 2016 – 06:41 AM GMT

PDB ID : 2XYS
Title : Crystal structure of Aplysia californica AChBP in complex with strychnine
Authors : Brams, M.; Pandya, A.; Kuzmin, D.; Van Elk, R.; Krijnen, L.; Yakel, J.L.;
Tsetlin, V.; Smit, A.B.; Ulens, C.
Deposited on : 2010-11-19
Resolution : 1.91 Å(reported)

This is a Full wwPDB X-ray Structure Validation Report for a publicly released PDB entry.
We welcome your comments at validation@mail.wwpdb.org
A user guide is available at
<http://wwpdb.org/validation/2016/XrayValidationReportHelp>
with specific help available everywhere you see the ⓘ symbol.

The following versions of software and data (see [references ⓘ](#)) were used in the production of this report:

MolProbity : 4.02b-467
Mogul : 1.7 (RC4), CSD as536be (2015)
Xtriage (Phenix) : 1.9-1692
EDS : rb-20026688
Percentile statistics : 20151230.v01 (using entries in the PDB archive December 30th 2015)
Refmac : 5.8.0135
CCP4 : 6.5.0
Ideal geometry (proteins) : Engh & Huber (2001)
Ideal geometry (DNA, RNA) : Parkinson et al. (1996)
Validation Pipeline (wwPDB-VP) : trunk26865

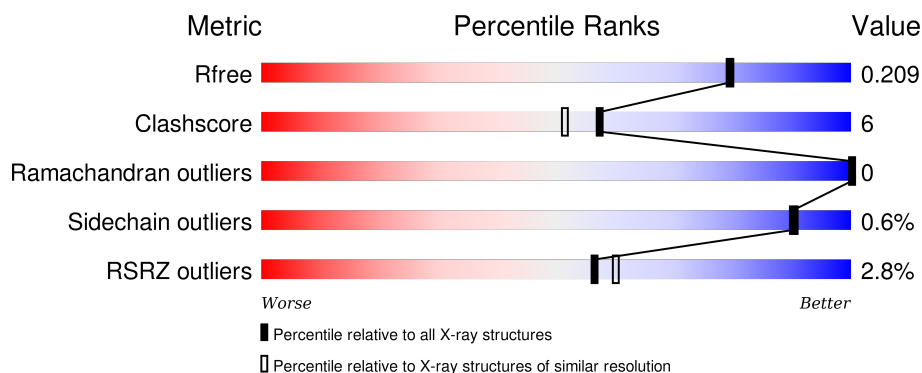
1 Overall quality at a glance

The following experimental techniques were used to determine the structure:

X-RAY DIFFRACTION

The reported resolution of this entry is 1.91 Å.

Percentile scores (ranging between 0-100) for global validation metrics of the entry are shown in the following graphic. The table shows the number of entries on which the scores are based.



Metric	Whole archive (#Entries)	Similar resolution (#Entries, resolution range(Å))
R_{free}	91344	4755 (1.90-1.90)
Clashscore	102246	5398 (1.90-1.90)
Ramachandran outliers	100387	5338 (1.90-1.90)
Sidechain outliers	100360	5339 (1.90-1.90)
RSRZ outliers	91569	4766 (1.90-1.90)

The table below summarises the geometric issues observed across the polymeric chains and their fit to the electron density. The red, orange, yellow and green segments on the lower bar indicate the fraction of residues that contain outliers for ≥ 3 , 2, 1 and 0 types of geometric quality criteria. A grey segment represents the fraction of residues that are not modelled. The numeric value for each fraction is indicated below the corresponding segment, with a dot representing fractions $\leq 5\%$. The upper red bar (where present) indicates the fraction of residues that have poor fit to the electron density. The numeric value is given above the bar.

Mol	Chain	Length	Quality of chain
1	A	217	<div> <div>3%</div> <div>84% 11% 6%</div> </div>
1	B	217	<div> <div>2%</div> <div>85% 9% 6%</div> </div>
1	C	217	<div> <div>2%</div> <div>83% 12% 6%</div> </div>
1	D	217	<div> <div>4%</div> <div>79% 15% 6%</div> </div>
1	E	217	<div> <div>2%</div> <div>83% 11% 6%</div> </div>

The following table lists non-polymeric compounds, carbohydrate monomers and non-standard residues in protein, DNA, RNA chains that are outliers for geometric or electron-density-fit criteria:

Mol	Type	Chain	Res	Chirality	Geometry	Clashes	Electron density
2	SY9	E	1207	-	-	-	X

2 Entry composition

There are 3 unique types of molecules in this entry. The entry contains 9639 atoms, of which 0 are hydrogens and 0 are deuteriums.

In the tables below, the ZeroOcc column contains the number of atoms modelled with zero occupancy, the AltConf column contains the number of residues with at least one atom in alternate conformation and the Trace column contains the number of residues modelled with at most 2 atoms.

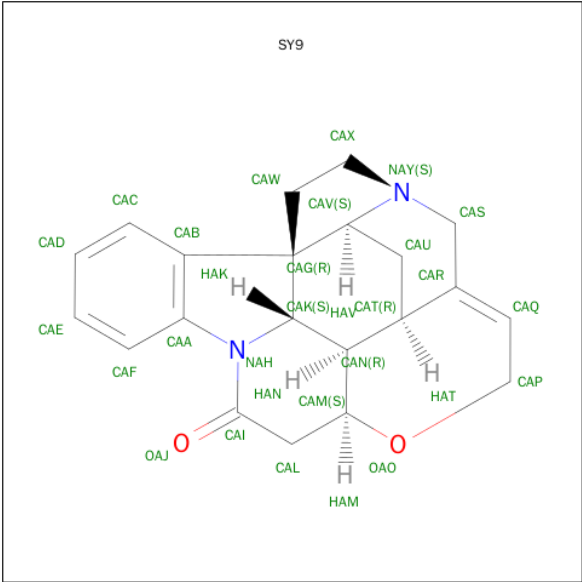
- Molecule 1 is a protein called SOLUBLE ACETYLCHOLINE RECEPTOR.

Mol	Chain	Residues	Atoms					ZeroOcc	AltConf	Trace
1	A	205	Total	C	N	O	S	0	6	0
			1685	1067	275	333	10			
1	B	205	Total	C	N	O	S	0	5	0
			1674	1061	272	332	9			
1	C	205	Total	C	N	O	S	0	6	0
			1683	1066	273	335	9			
1	D	205	Total	C	N	O	S	0	4	0
			1674	1063	271	330	10			
1	E	205	Total	C	N	O	S	0	4	0
			1668	1059	270	329	10			

There are 10 discrepancies between the modelled and reference sequences:

Chain	Residue	Modelled	Actual	Comment	Reference
A	41	VAL	ALA	CONFLICT	UNP Q8WSF8
A	136	VAL	ALA	CONFLICT	UNP Q8WSF8
B	41	VAL	ALA	CONFLICT	UNP Q8WSF8
B	136	VAL	ALA	CONFLICT	UNP Q8WSF8
C	41	VAL	ALA	CONFLICT	UNP Q8WSF8
C	136	VAL	ALA	CONFLICT	UNP Q8WSF8
D	41	VAL	ALA	CONFLICT	UNP Q8WSF8
D	136	VAL	ALA	CONFLICT	UNP Q8WSF8
E	41	VAL	ALA	CONFLICT	UNP Q8WSF8
E	136	VAL	ALA	CONFLICT	UNP Q8WSF8

- Molecule 2 is STRYCHNINE (three-letter code: SY9) (formula: C₂₁H₂₂N₂O₂).



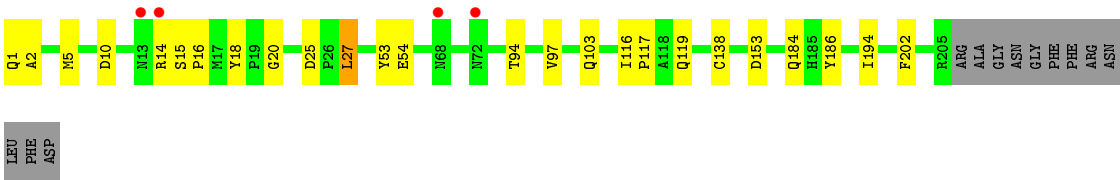
Mol	Chain	Residues	Atoms				ZeroOcc	AltConf
2	A	1	Total	C	N	O	0	0
			25	21	2	2		
2	B	1	Total	C	N	O	0	0
			25	21	2	2		
2	C	1	Total	C	N	O	0	0
			25	21	2	2		
2	D	1	Total	C	N	O	0	0
			25	21	2	2		
2	E	1	Total	C	N	O	0	0
			25	21	2	2		
2	E	1	Total	C	N	O	0	0
			25	21	2	2		

- Molecule 3 is water.

Mol	Chain	Residues	Atoms		ZeroOcc	AltConf
3	A	225	Total	O	0	0
			225	225		
3	B	206	Total	O	0	0
			206	206		
3	C	242	Total	O	0	0
			242	242		
3	D	203	Total	O	0	0
			203	203		
3	E	229	Total	O	0	0
			229	229		

• Molecule 1: SOLUBLE ACETYLCHOLINE RECEPTOR





4 Data and refinement statistics

Property	Value	Source
Space group	P 41 21 2	Depositor
Cell constants a, b, c, α , β , γ	100.59Å 100.59Å 289.68Å 90.00° 90.00° 90.00°	Depositor
Resolution (Å)	44.61 – 1.91 44.61 – 1.91	Depositor EDS
% Data completeness (in resolution range)	92.9 (44.61-1.91) 98.0 (44.61-1.91)	Depositor EDS
R_{merge}	0.08	Depositor
R_{sym}	(Not available)	Depositor
$\langle I/\sigma(I) \rangle$ ¹	1.57 (at 1.91Å)	Xtriage
Refinement program	PHENIX (PHENIX.REFINE)	Depositor
R, R_{free}	0.172 , 0.210 0.175 , 0.209	Depositor DCC
R_{free} test set	5723 reflections (5.30%)	DCC
Wilson B-factor (Å ²)	24.4	Xtriage
Anisotropy	0.198	Xtriage
Bulk solvent k_{sol} (e/Å ³), B_{sol} (Å ²)	0.35 , 51.0	EDS
Estimated twinning fraction	No twinning to report.	Xtriage
L-test for twinning ²	$\langle L \rangle = 0.48$, $\langle L^2 \rangle = 0.31$	Xtriage
Outliers	0 of 113764 reflections	Xtriage
F_o, F_c correlation	0.96	EDS
Total number of atoms	9639	wwPDB-VP
Average B, all atoms (Å ²)	27.0	wwPDB-VP

Xtriage's analysis on translational NCS is as follows: *The largest off-origin peak in the Patterson function is 2.76% of the height of the origin peak. No significant pseudotranslation is detected.*

¹Intensities estimated from amplitudes.

²Theoretical values of $\langle |L| \rangle$, $\langle L^2 \rangle$ for acentric reflections are 0.5, 0.375 respectively for untwinned datasets, and 0.333, 0.2 for perfectly twinned datasets.

5 Model quality [i](#)

5.1 Standard geometry [i](#)

Bond lengths and bond angles in the following residue types are not validated in this section: SY9

The Z score for a bond length (or angle) is the number of standard deviations the observed value is removed from the expected value. A bond length (or angle) with $|Z| > 5$ is considered an outlier worth inspection. RMSZ is the root-mean-square of all Z scores of the bond lengths (or angles).

Mol	Chain	Bond lengths		Bond angles	
		RMSZ	# $ Z > 5$	RMSZ	# $ Z > 5$
1	A	0.35	0/1725	0.55	0/2354
1	B	0.36	0/1714	0.58	0/2340
1	C	0.35	0/1723	0.55	0/2352
1	D	0.33	0/1714	0.53	0/2341
1	E	0.35	0/1708	0.55	0/2331
All	All	0.35	0/8584	0.55	0/11718

There are no bond length outliers.

There are no bond angle outliers.

There are no chirality outliers.

There are no planarity outliers.

5.2 Too-close contacts [i](#)

In the following table, the Non-H and H(model) columns list the number of non-hydrogen atoms and hydrogen atoms in the chain respectively. The H(added) column lists the number of hydrogen atoms added and optimized by MolProbity. The Clashes column lists the number of clashes within the asymmetric unit, whereas Symm-Clashes lists symmetry related clashes.

Mol	Chain	Non-H	H(model)	H(added)	Clashes	Symm-Clashes
1	A	1685	0	1625	18	0
1	B	1674	0	1612	19	0
1	C	1683	0	1616	25	0
1	D	1674	0	1618	27	0
1	E	1668	0	1611	23	0
2	A	25	0	22	3	0
2	B	25	0	22	1	0
2	C	25	0	22	2	0

Continued on next page...

Continued from previous page...

Mol	Chain	Non-H	H(model)	H(added)	Clashes	Symm-Clashes
2	D	25	0	22	4	0
2	E	50	0	44	0	0
3	A	225	0	0	2	0
3	B	206	0	0	2	0
3	C	242	0	0	4	0
3	D	203	0	0	2	0
3	E	229	0	0	0	0
All	All	9639	0	8214	100	0

The all-atom clashscore is defined as the number of clashes found per 1000 atoms (including hydrogen atoms). The all-atom clashscore for this structure is 6.

All (100) close contacts within the same asymmetric unit are listed below, sorted by their clash magnitude.

Atom-1	Atom-2	Interatomic distance (Å)	Clash overlap (Å)
1:C:10:ASP:HA	1:C:14:ARG:HD3	1.56	0.86
1:A:10:ASP:HA	1:A:14:ARG:HD3	1.59	0.83
1:D:10:ASP:HA	1:D:14:ARG:HD3	1.61	0.82
1:B:10:ASP:HA	1:B:14:ARG:HD3	1.61	0.81
1:D:114:MET:HG2	1:D:116[C]:ILE:HD11	1.68	0.76
1:E:153:ASP:HA	1:E:194[A]:ILE:HD12	1.73	0.70
1:E:10:ASP:HA	1:E:14:ARG:HD3	1.75	0.68
1:A:97:VAL:HG11	1:A:119:GLN:HE21	1.57	0.68
1:E:97:VAL:HG11	1:E:119:GLN:HE21	1.59	0.68
1:B:31[B]:LEU:HD23	1:B:154:LEU:HD22	1.76	0.66
1:B:89:THR:HG21	1:C:102:PRO:CD	2.26	0.66
1:E:153:ASP:OD1	1:E:194[A]:ILE:HD13	1.96	0.65
1:A:103:GLN:HG2	3:A:2142:HOH:O	1.96	0.64
1:B:89:THR:HG21	1:C:102:PRO:HD3	1.79	0.64
3:C:2068:HOH:O	1:D:39[B]:VAL:HG11	1.98	0.64
1:B:97[A]:VAL:HG11	1:B:119:GLN:HE21	1.64	0.63
1:D:25:ASP:OD2	1:E:1:GLN:HG3	1.99	0.63
1:C:184[A]:GLN:HG3	3:C:2224:HOH:O	2.02	0.60
1:D:6:ARG:NH2	1:D:69:GLU:O	2.34	0.60
1:D:114:MET:HG2	1:D:116[B]:ILE:HD11	1.84	0.59
1:C:97:VAL:HG11	1:C:119:GLN:HE21	1.66	0.59
1:D:191:GLU:HB2	1:D:192:PRO:HD2	1.85	0.59
2:A:1206:SY9:HAL1	1:B:53:TYR:HE2	1.68	0.58
1:A:25:ASP:OD2	1:B:1:GLN:HG3	2.04	0.58
2:A:1206:SY9:CAC	1:B:116[B]:ILE:HD13	2.36	0.56
1:B:114:MET:SD	1:B:116[B]:ILE:HD11	2.46	0.56

Continued on next page...

Continued from previous page...

Atom-1	Atom-2	Interatomic distance (Å)	Clash overlap (Å)
1:B:97[B]:VAL:HG12	3:B:2116:HOH:O	2.06	0.55
1:B:29:VAL:HG12	1:B:31[B]:LEU:CD2	2.37	0.55
1:D:97[B]:VAL:HG22	3:D:2121:HOH:O	2.06	0.55
1:C:27[B]:LEU:HD21	1:C:58:TRP:HB2	1.89	0.55
1:E:153:ASP:HA	1:E:194[A]:ILE:CD1	2.38	0.54
1:B:189:CYS:SG	2:B:1206:SY9:HAE	2.47	0.54
1:D:25:ASP:CG	1:E:1:GLN:HG3	2.29	0.52
1:C:103:GLN:HA	1:C:103:GLN:HE21	1.74	0.52
1:C:25:ASP:OD2	1:D:1:GLN:HG3	2.09	0.51
1:D:23:LYS:HG3	1:D:150:PHE:HB3	1.91	0.51
1:C:15:SER:OG	1:C:16:PRO:HD2	2.11	0.50
1:C:1:GLN:OE1	1:C:1:GLN:HA	2.10	0.50
1:C:89[A]:THR:HG21	1:C:145:TRP:CE3	2.46	0.49
1:C:178:THR:OG1	1:C:199[B]:VAL:HG22	2.12	0.49
3:B:2036:HOH:O	1:C:104:ILE:HD11	2.12	0.49
1:D:145:TRP:CD2	2:D:1206:SY9:HAX2	2.47	0.49
1:A:193:TYR:CE2	2:A:1206:SY9:HAU1	2.48	0.48
1:E:2:ALA:HA	1:E:5:MET:CE	2.42	0.48
1:A:1:GLN:HA	1:A:1:GLN:OE1	2.14	0.48
1:D:114:MET:CG	1:D:116[C]:ILE:HD11	2.42	0.48
1:A:1:GLN:HG3	1:E:25:ASP:OD2	2.13	0.48
1:A:167:TYR:CZ	1:A:169:SER:HB2	2.49	0.48
1:D:87:ASP:OD2	1:D:146:VAL:HG22	2.14	0.48
1:E:27[B]:LEU:HD23	1:E:27[B]:LEU:C	2.34	0.47
1:E:116[A]:ILE:HG23	1:E:116[A]:ILE:O	2.14	0.47
1:A:205:ARG:HG2	1:A:205:ARG:HH11	1.78	0.47
1:E:97:VAL:HG11	1:E:119:GLN:NE2	2.28	0.47
1:A:57[A]:ARG:NH2	1:A:157:ASP:OD2	2.41	0.47
1:C:15:SER:HB3	3:C:2021:HOH:O	2.14	0.47
1:C:47:GLU:HG2	3:C:2061:HOH:O	2.14	0.47
1:C:2:ALA:HA	1:C:5:MET:HE2	1.97	0.46
1:D:167:TYR:CZ	1:D:169:SER:HB2	2.50	0.46
2:D:1206:SY9:HAE	3:D:2196:HOH:O	2.16	0.46
1:D:2:ALA:HA	1:D:5:MET:HE2	1.98	0.45
1:D:57:ARG:NH2	1:D:157:ASP:OD2	2.38	0.45
1:B:25:ASP:CG	1:C:1:GLN:HG3	2.36	0.45
1:A:183:VAL:HG22	1:A:194:ILE:HD12	1.97	0.45
1:E:2:ALA:HA	1:E:5:MET:HE2	1.98	0.45
1:B:146:VAL:HG23	1:C:77:ARG:HG2	1.98	0.44
1:A:6:ARG:NH2	1:A:69:GLU:O	2.44	0.44
1:B:25:ASP:OD2	1:C:1:GLN:HG3	2.18	0.44

Continued on next page...

Continued from previous page...

Atom-1	Atom-2	Interatomic distance (Å)	Clash overlap (Å)
1:E:184:GLN:HG2	1:E:186:TYR:CZ	2.53	0.44
1:C:103:GLN:NE2	1:C:103:GLN:HA	2.32	0.44
1:A:120:ARG:HD2	1:E:94:THR:O	2.18	0.44
2:C:1206:SY9:HAL1	1:D:53:TYR:HE2	1.83	0.43
1:D:191:GLU:CD	1:D:191:GLU:H	2.20	0.43
1:D:188:CYS:SG	2:D:1206:SY9:CAF	3.06	0.43
1:C:199[B]:VAL:HG23	1:C:199[B]:VAL:O	2.19	0.43
1:E:15:SER:OG	1:E:16:PRO:HD2	2.19	0.43
1:E:18:TYR:CE2	1:E:20:GLY:HA2	2.54	0.42
1:E:103:GLN:HE21	1:E:103:GLN:HA	1.84	0.42
1:A:57[A]:ARG:HG2	3:A:2148:HOH:O	2.19	0.42
1:A:5[B]:MET:SD	1:E:16:PRO:HB2	2.59	0.42
1:A:116[A]:ILE:O	1:A:116[A]:ILE:HG23	2.20	0.42
1:E:138:CYS:SG	1:E:202:PHE:HE1	2.43	0.42
1:B:87:ASP:O	1:B:89:THR:HG22	2.20	0.41
1:D:18:TYR:CE2	1:D:20:GLY:HA2	2.54	0.41
1:D:101:SER:HB2	1:D:102:PRO:HD2	2.03	0.41
1:D:116[C]:ILE:HD12	1:D:116[C]:ILE:N	2.36	0.41
1:C:145:TRP:CD2	2:C:1206:SY9:HAX2	2.55	0.41
1:D:189:CYS:HA	1:D:190:PRO:HD3	1.73	0.41
1:D:114:MET:HG2	1:D:116[C]:ILE:CD1	2.45	0.41
1:C:27[A]:LEU:HA	1:C:27[A]:LEU:HD12	1.97	0.41
1:A:87:ASP:OD2	1:A:146:VAL:HG22	2.21	0.41
2:D:1206:SY9:HAL1	1:E:53:TYR:HE2	1.85	0.41
1:C:27[B]:LEU:HD23	1:C:28:THR:N	2.36	0.41
1:B:167:TYR:CZ	1:B:169:SER:HB2	2.55	0.41
1:B:40:LYS:HB3	1:B:49:ASP:HB2	2.02	0.41
1:E:103:GLN:NE2	1:E:103:GLN:HA	2.36	0.40
1:E:54:GLU:O	1:E:117:PRO:HD2	2.21	0.40
1:D:1:GLN:OE1	1:D:1:GLN:HA	2.20	0.40
1:A:94:THR:O	1:B:120:ARG:HD2	2.21	0.40
1:C:184[A]:GLN:HB2	1:C:186:TYR:CE2	2.57	0.40
1:D:2:ALA:HA	1:D:5:MET:CE	2.52	0.40

There are no symmetry-related clashes.

5.3 Torsion angles

5.3.1 Protein backbone

In the following table, the Percentiles column shows the percent Ramachandran outliers of the chain as a percentile score with respect to all X-ray entries followed by that with respect to entries of similar resolution.

The Analysed column shows the number of residues for which the backbone conformation was analysed, and the total number of residues.

Mol	Chain	Analysed	Favoured	Allowed	Outliers	Percentiles	
1	A	209/217 (96%)	209 (100%)	0	0	100	100
1	B	208/217 (96%)	206 (99%)	2 (1%)	0	100	100
1	C	209/217 (96%)	207 (99%)	2 (1%)	0	100	100
1	D	208/217 (96%)	206 (99%)	2 (1%)	0	100	100
1	E	207/217 (95%)	206 (100%)	1 (0%)	0	100	100
All	All	1041/1085 (96%)	1034 (99%)	7 (1%)	0	100	100

There are no Ramachandran outliers to report.

5.3.2 Protein sidechains

In the following table, the Percentiles column shows the percent sidechain outliers of the chain as a percentile score with respect to all X-ray entries followed by that with respect to entries of similar resolution.

The Analysed column shows the number of residues for which the sidechain conformation was analysed, and the total number of residues.

Mol	Chain	Analysed	Rotameric	Outliers	Percentiles	
1	A	194/197 (98%)	194 (100%)	0	100	100
1	B	193/197 (98%)	191 (99%)	2 (1%)	82	81
1	C	194/197 (98%)	193 (100%)	1 (0%)	92	92
1	D	193/197 (98%)	191 (99%)	2 (1%)	82	81
1	E	192/197 (98%)	190 (99%)	2 (1%)	82	81
All	All	966/985 (98%)	959 (99%)	7 (1%)	90	88

All (7) residues with a non-rotameric sidechain are listed below:

Mol	Chain	Res	Type
1	B	89	THR
1	B	189	CYS
1	C	205	ARG
1	D	77	ARG
1	D	89	THR
1	E	27[A]	LEU
1	E	27[B]	LEU

Some sidechains can be flipped to improve hydrogen bonding and reduce clashes. All (13) such sidechains are listed below:

Mol	Chain	Res	Type
1	A	119	GLN
1	B	119	GLN
1	B	182	GLN
1	B	184	GLN
1	B	185	HIS
1	C	103	GLN
1	C	119	GLN
1	D	55	GLN
1	D	119	GLN
1	E	55	GLN
1	E	103	GLN
1	E	119	GLN
1	E	184	GLN

5.3.3 RNA [i](#)

There are no RNA molecules in this entry.

5.4 Non-standard residues in protein, DNA, RNA chains [i](#)

There are no non-standard protein/DNA/RNA residues in this entry.

5.5 Carbohydrates [i](#)

There are no carbohydrates in this entry.

5.6 Ligand geometry [i](#)

6 ligands are modelled in this entry.

In the following table, the Counts columns list the number of bonds (or angles) for which Mogul statistics could be retrieved, the number of bonds (or angles) that are observed in the model and the number of bonds (or angles) that are defined in the chemical component dictionary. The Link column lists molecule types, if any, to which the group is linked. The Z score for a bond length (or angle) is the number of standard deviations the observed value is removed from the expected value. A bond length (or angle) with $|Z| > 2$ is considered an outlier worth inspection. RMSZ is the root-mean-square of all Z scores of the bond lengths (or angles).

Mol	Type	Chain	Res	Link	Bond lengths			Bond angles		
					Counts	RMSZ	$\# Z > 2$	Counts	RMSZ	$\# Z > 2$
2	SY9	A	1206	-	31,31,31	1.78	3 (9%)	51,51,51	2.65	19 (37%)
2	SY9	B	1206	-	31,31,31	1.76	4 (12%)	51,51,51	2.84	20 (39%)
2	SY9	C	1206	-	31,31,31	1.74	3 (9%)	51,51,51	2.68	21 (41%)
2	SY9	D	1206	-	31,31,31	1.78	3 (9%)	51,51,51	2.81	20 (39%)
2	SY9	E	1206	-	31,31,31	1.76	3 (9%)	51,51,51	2.76	17 (33%)
2	SY9	E	1207	-	31,31,31	1.87	6 (19%)	51,51,51	2.78	20 (39%)

In the following table, the Chirals column lists the number of chiral outliers, the number of chiral centers analysed, the number of these observed in the model and the number defined in the chemical component dictionary. Similar counts are reported in the Torsion and Rings columns. '-' means no outliers of that kind were identified.

Mol	Type	Chain	Res	Link	Chirals	Torsions	Rings
2	SY9	A	1206	-	-	0/0/74/74	0/0/7/7
2	SY9	B	1206	-	-	0/0/74/74	0/0/7/7
2	SY9	C	1206	-	-	0/0/74/74	0/0/7/7
2	SY9	D	1206	-	-	0/0/74/74	0/0/7/7
2	SY9	E	1206	-	-	0/0/74/74	0/0/7/7
2	SY9	E	1207	-	-	0/0/74/74	0/0/7/7

All (22) bond length outliers are listed below:

Mol	Chain	Res	Type	Atoms	Z	Observed(Å)	Ideal(Å)
2	D	1206	SY9	CAP-CAQ	-5.79	1.39	1.50
2	B	1206	SY9	CAP-CAQ	-5.76	1.39	1.50
2	E	1207	SY9	CAP-CAQ	-5.76	1.39	1.50
2	E	1206	SY9	CAP-CAQ	-5.71	1.39	1.50
2	A	1206	SY9	CAP-CAQ	-5.63	1.39	1.50
2	C	1206	SY9	CAP-CAQ	-5.62	1.39	1.50
2	B	1206	SY9	CAK-NAH	-2.18	1.46	1.49
2	E	1207	SY9	CAG-CAB	2.05	1.54	1.51
2	E	1207	SY9	OAD-CAM	2.05	1.46	1.43
2	E	1207	SY9	CAL-CAI	2.26	1.54	1.51

Continued on next page...

Continued from previous page...

Mol	Chain	Res	Type	Atoms	Z	Observed(Å)	Ideal(Å)
2	E	1206	SY9	CAQ-CAR	2.48	1.37	1.33
2	B	1206	SY9	CAQ-CAR	2.72	1.38	1.33
2	D	1206	SY9	CAQ-CAR	2.74	1.38	1.33
2	C	1206	SY9	CAQ-CAR	2.81	1.38	1.33
2	A	1206	SY9	CAQ-CAR	3.02	1.38	1.33
2	E	1207	SY9	CAQ-CAR	3.25	1.39	1.33
2	B	1206	SY9	OAJ-CAI	5.50	1.35	1.23
2	C	1206	SY9	OAJ-CAI	5.79	1.36	1.23
2	E	1206	SY9	OAJ-CAI	5.90	1.36	1.23
2	D	1206	SY9	OAJ-CAI	5.93	1.36	1.23
2	A	1206	SY9	OAJ-CAI	5.95	1.36	1.23
2	E	1207	SY9	OAJ-CAI	5.95	1.36	1.23

All (117) bond angle outliers are listed below:

Mol	Chain	Res	Type	Atoms	Z	Observed(°)	Ideal(°)
2	B	1206	SY9	CAN-CAK-NAH	-9.93	99.00	106.13
2	E	1206	SY9	CAN-CAK-NAH	-8.79	99.81	106.13
2	D	1206	SY9	CAS-CAR-CAQ	-8.45	114.33	123.06
2	E	1207	SY9	CAS-CAR-CAQ	-8.21	114.58	123.06
2	E	1206	SY9	CAS-CAR-CAQ	-8.19	114.60	123.06
2	C	1206	SY9	CAS-CAR-CAQ	-8.17	114.62	123.06
2	A	1206	SY9	CAS-CAR-CAQ	-8.02	114.77	123.06
2	B	1206	SY9	CAS-CAR-CAQ	-7.68	115.13	123.06
2	D	1206	SY9	OAO-CAM-CAL	-7.22	96.37	104.43
2	E	1207	SY9	CAN-CAK-NAH	-6.79	101.25	106.13
2	B	1206	SY9	CAM-CAL-CAI	-6.37	110.19	117.18
2	A	1206	SY9	OAO-CAM-CAL	-5.72	98.04	104.43
2	E	1206	SY9	CAM-CAL-CAI	-5.56	111.08	117.18
2	E	1206	SY9	CAN-CAT-CAR	-4.86	110.68	114.38
2	C	1206	SY9	CAN-CAK-NAH	-4.77	102.70	106.13
2	A	1206	SY9	OAJ-CAI-NAH	-4.74	118.66	122.61
2	C	1206	SY9	CAN-CAT-CAR	-4.63	110.86	114.38
2	C	1206	SY9	OAO-CAM-CAL	-4.55	99.35	104.43
2	A	1206	SY9	CAM-CAL-CAI	-4.39	112.37	117.18
2	C	1206	SY9	CAM-CAL-CAI	-4.32	112.45	117.18
2	A	1206	SY9	CAN-CAT-CAR	-4.21	111.18	114.38
2	B	1206	SY9	CAK-NAH-CAI	-4.19	114.87	119.28
2	D	1206	SY9	CAW-CAG-CAB	-4.18	104.85	112.36
2	D	1206	SY9	CAS-NAY-CAX	-4.04	106.16	112.52
2	E	1206	SY9	OAJ-CAI-NAH	-4.03	119.25	122.61
2	D	1206	SY9	CAN-CAT-CAR	-4.03	111.31	114.38

Continued on next page...

Continued from previous page...

Mol	Chain	Res	Type	Atoms	Z	Observed(°)	Ideal(°)
2	A	1206	SY9	CAS-NAY-CAX	-4.00	106.22	112.52
2	B	1206	SY9	CAN-CAT-CAR	-3.96	111.36	114.38
2	D	1206	SY9	CAM-CAL-CAI	-3.87	112.94	117.18
2	E	1207	SY9	OAJ-CAI-NAH	-3.86	119.39	122.61
2	A	1206	SY9	CAW-CAG-CAB	-3.84	105.47	112.36
2	E	1207	SY9	CAN-CAT-CAR	-3.76	111.52	114.38
2	D	1206	SY9	CAT-CAN-CAM	-3.74	115.69	118.49
2	E	1207	SY9	CAK-NAH-CAI	-3.65	115.44	119.28
2	B	1206	SY9	OAJ-CAI-NAH	-3.53	119.67	122.61
2	E	1207	SY9	CAM-CAL-CAI	-3.49	113.36	117.18
2	C	1206	SY9	CAS-NAY-CAX	-3.41	107.15	112.52
2	C	1206	SY9	CAT-CAN-CAM	-3.40	115.94	118.49
2	E	1207	SY9	CAL-CAM-CAN	-3.37	107.24	110.35
2	E	1206	SY9	CAK-NAH-CAI	-3.25	115.86	119.28
2	C	1206	SY9	OAJ-CAI-NAH	-3.24	119.91	122.61
2	C	1206	SY9	CAK-NAH-CAI	-3.21	115.90	119.28
2	D	1206	SY9	CAK-NAH-CAI	-3.13	115.98	119.28
2	E	1207	SY9	CAT-CAN-CAM	-2.94	116.28	118.49
2	A	1206	SY9	CAU-CAT-CAR	-2.91	105.68	109.14
2	D	1206	SY9	CAU-CAT-CAR	-2.90	105.69	109.14
2	A	1206	SY9	CAT-CAN-CAM	-2.88	116.33	118.49
2	D	1206	SY9	CAN-CAK-NAH	-2.82	104.10	106.13
2	E	1206	SY9	CAR-CAS-NAY	-2.63	108.03	112.86
2	D	1206	SY9	CAR-CAS-NAY	-2.62	108.04	112.86
2	E	1207	SY9	CAS-NAY-CAX	-2.60	108.43	112.52
2	B	1206	SY9	CAR-CAS-NAY	-2.54	108.19	112.86
2	B	1206	SY9	CAU-CAT-CAR	-2.54	106.12	109.14
2	E	1207	SY9	CAR-CAS-NAY	-2.53	108.21	112.86
2	D	1206	SY9	OAJ-CAI-NAH	-2.46	120.56	122.61
2	C	1206	SY9	CAR-CAS-NAY	-2.45	108.35	112.86
2	E	1206	SY9	CAU-CAT-CAR	-2.40	106.29	109.14
2	C	1206	SY9	CAW-CAG-CAB	-2.39	108.07	112.36
2	E	1206	SY9	CAT-CAN-CAM	-2.38	116.71	118.49
2	E	1207	SY9	CAW-CAG-CAB	-2.35	108.14	112.36
2	B	1206	SY9	CAT-CAN-CAM	-2.26	116.80	118.49
2	C	1206	SY9	CAU-CAT-CAR	-2.25	106.47	109.14
2	B	1206	SY9	CAS-NAY-CAX	-2.20	109.05	112.52
2	B	1206	SY9	CAL-CAM-CAN	-2.19	108.32	110.35
2	A	1206	SY9	CAR-CAS-NAY	-2.16	108.88	112.86
2	E	1206	SY9	OAO-CAM-CAL	-2.11	102.07	104.43
2	B	1206	SY9	CAF-CAA-CAB	-2.11	119.36	121.78
2	E	1207	SY9	CAU-CAT-CAR	-2.08	106.67	109.14

Continued on next page...

Continued from previous page...

Mol	Chain	Res	Type	Atoms	Z	Observed(°)	Ideal(°)
2	A	1206	SY9	CAK-NAH-CAI	-2.06	117.11	119.28
2	C	1206	SY9	CAM-CAN-CAK	2.07	109.05	107.45
2	E	1207	SY9	CAM-CAN-CAK	2.08	109.06	107.45
2	B	1206	SY9	CAS-CAR-CAT	2.14	118.66	113.95
2	C	1206	SY9	CAS-CAR-CAT	2.19	118.79	113.95
2	A	1206	SY9	CAS-CAR-CAT	2.22	118.84	113.95
2	D	1206	SY9	CAS-CAR-CAT	2.22	118.84	113.95
2	E	1206	SY9	CAS-CAR-CAT	2.23	118.88	113.95
2	E	1206	SY9	CAP-OAO-CAM	2.24	117.02	114.94
2	B	1206	SY9	CAK-CAG-CAV	2.43	116.33	113.92
2	B	1206	SY9	OAO-CAP-CAQ	2.53	117.10	111.50
2	D	1206	SY9	CAP-OAO-CAM	2.54	117.31	114.94
2	C	1206	SY9	CAK-CAG-CAV	2.58	116.48	113.92
2	A	1206	SY9	CAP-OAO-CAM	2.62	117.38	114.94
2	E	1207	SY9	CAP-OAO-CAM	2.64	117.40	114.94
2	E	1206	SY9	CAL-CAI-NAH	2.78	118.28	115.31
2	A	1206	SY9	CAA-NAH-CAI	2.93	128.45	125.40
2	B	1206	SY9	OAO-CAM-CAN	3.07	116.68	114.46
2	D	1206	SY9	CAA-NAH-CAK	3.15	111.35	109.29
2	A	1206	SY9	OAO-CAP-CAQ	3.15	118.47	111.50
2	C	1206	SY9	OAO-CAP-CAQ	3.22	118.61	111.50
2	D	1206	SY9	OAO-CAP-CAQ	3.25	118.69	111.50
2	C	1206	SY9	CAA-NAH-CAK	3.27	111.43	109.29
2	D	1206	SY9	CAL-CAI-NAH	3.32	118.85	115.31
2	B	1206	SY9	CAT-CAR-CAQ	3.51	126.19	122.64
2	B	1206	SY9	CAL-CAI-NAH	3.55	119.10	115.31
2	E	1207	SY9	OAO-CAP-CAQ	3.59	119.45	111.50
2	B	1206	SY9	CAA-NAH-CAK	3.68	111.69	109.29
2	A	1206	SY9	CAT-CAR-CAQ	3.69	126.37	122.64
2	E	1207	SY9	CAL-CAI-NAH	3.72	119.28	115.31
2	E	1206	SY9	CAT-CAR-CAQ	3.82	126.51	122.64
2	C	1206	SY9	CAT-CAR-CAQ	3.89	126.57	122.64
2	D	1206	SY9	CAT-CAR-CAQ	4.14	126.83	122.64
2	A	1206	SY9	CAA-NAH-CAK	4.16	112.01	109.29
2	E	1207	SY9	CAA-NAH-CAK	4.26	112.07	109.29
2	A	1206	SY9	CAL-CAI-NAH	4.30	119.89	115.31
2	E	1207	SY9	CAT-CAR-CAQ	4.62	127.31	122.64
2	C	1206	SY9	CAA-NAH-CAI	4.63	130.22	125.40
2	C	1206	SY9	CAL-CAI-NAH	4.66	120.28	115.31
2	E	1206	SY9	CAA-NAH-CAI	4.83	130.43	125.40
2	E	1206	SY9	CAA-NAH-CAK	4.88	112.48	109.29
2	E	1206	SY9	OAO-CAM-CAN	4.92	118.02	114.46

Continued on next page...

Continued from previous page...

Mol	Chain	Res	Type	Atoms	Z	Observed(°)	Ideal(°)
2	A	1206	SY9	OA0-CAM-CAN	5.23	118.25	114.46
2	D	1206	SY9	CAA-NAH-CAI	5.50	131.12	125.40
2	E	1207	SY9	CAA-NAH-CAI	5.84	131.48	125.40
2	B	1206	SY9	CAA-NAH-CAI	6.22	131.88	125.40
2	D	1206	SY9	OA0-CAM-CAN	6.26	118.99	114.46
2	C	1206	SY9	OA0-CAM-CAN	6.28	119.00	114.46
2	E	1207	SY9	OA0-CAM-CAN	6.78	119.36	114.46

There are no chirality outliers.

There are no torsion outliers.

There are no ring outliers.

4 monomers are involved in 10 short contacts:

Mol	Chain	Res	Type	Clashes	Symm-Clashes
2	A	1206	SY9	3	0
2	B	1206	SY9	1	0
2	C	1206	SY9	2	0
2	D	1206	SY9	4	0

5.7 Other polymers [i](#)

There are no such residues in this entry.

5.8 Polymer linkage issues [i](#)

There are no chain breaks in this entry.

6 Fit of model and data ⓘ

6.1 Protein, DNA and RNA chains ⓘ

In the following table, the column labelled ‘#RSRZ> 2’ contains the number (and percentage) of RSRZ outliers, followed by percent RSRZ outliers for the chain as percentile scores relative to all X-ray entries and entries of similar resolution. The OWAB column contains the minimum, median, 95th percentile and maximum values of the occupancy-weighted average B-factor per residue. The column labelled ‘Q< 0.9’ lists the number of (and percentage) of residues with an average occupancy less than 0.9.

Mol	Chain	Analysed	<RSRZ>	#RSRZ>2	OWAB(Å ²)	Q<0.9
1	A	205/217 (94%)	-0.05	7 (3%) 49 52	14, 23, 43, 72	0
1	B	205/217 (94%)	-0.01	5 (2%) 62 66	14, 22, 45, 77	0
1	C	205/217 (94%)	-0.08	5 (2%) 62 66	15, 23, 41, 78	0
1	D	205/217 (94%)	0.09	8 (3%) 43 47	14, 26, 57, 100	0
1	E	205/217 (94%)	-0.01	4 (1%) 68 71	13, 22, 41, 91	0
All	All	1025/1085 (94%)	-0.01	29 (2%) 56 60	13, 23, 50, 100	0

All (29) RSRZ outliers are listed below:

Mol	Chain	Res	Type	RSRZ
1	D	188	CYS	4.9
1	D	14	ARG	3.9
1	D	189	CYS	3.2
1	E	14	ARG	3.1
1	B	16	PRO	3.1
1	A	128	THR	2.9
1	A	14	ARG	2.9
1	C	15	SER	2.7
1	D	187	SER	2.7
1	B	14	ARG	2.7
1	C	134	GLU	2.6
1	D	150	PHE	2.5
1	A	132	SER	2.5
1	C	14	ARG	2.4
1	C	133	GLU	2.4
1	B	205	ARG	2.4
1	D	190	PRO	2.4
1	C	16	PRO	2.4
1	A	133	GLU	2.3
1	A	205	ARG	2.3

Continued on next page...

Continued from previous page...

Mol	Chain	Res	Type	RSRZ
1	D	1	GLN	2.3
1	B	15	SER	2.2
1	D	191	GLU	2.1
1	B	188	CYS	2.1
1	E	68	ASN	2.1
1	A	134	GLU	2.1
1	A	130	VAL	2.1
1	E	13	ASN	2.0
1	E	72	ASN	2.0

6.2 Non-standard residues in protein, DNA, RNA chains [i](#)

There are no non-standard protein/DNA/RNA residues in this entry.

6.3 Carbohydrates [i](#)

There are no carbohydrates in this entry.

6.4 Ligands [i](#)

In the following table, the Atoms column lists the number of modelled atoms in the group and the number defined in the chemical component dictionary. LLDF column lists the quality of electron density of the group with respect to its neighbouring residues in protein, DNA or RNA chains. The B-factors column lists the minimum, median, 95th percentile and maximum values of B factors of atoms in the group. The column labelled 'Q < 0.9' lists the number of atoms with occupancy less than 0.9.

Mol	Type	Chain	Res	Atoms	RSCC	RSR	LLDF	B-factors(Å ²)	Q<0.9
2	SY9	E	1207	25/25	0.74	0.28	6.08	41,61,68,72	0
2	SY9	D	1206	25/25	0.86	0.17	0.96	27,37,66,70	0
2	SY9	A	1206	25/25	0.91	0.11	0.89	19,25,34,35	0
2	SY9	C	1206	25/25	0.95	0.11	-0.03	17,22,28,30	0
2	SY9	B	1206	25/25	0.92	0.11	-0.30	15,26,46,48	0
2	SY9	E	1206	25/25	0.94	0.10	-0.57	16,24,37,39	0

6.5 Other polymers [i](#)

There are no such residues in this entry.