



Full wwPDB X-ray Structure Validation Report ⓘ

Feb 1, 2016 – 06:41 AM GMT

PDB ID : 2XYX
Title : NOVEL SULFONYLTHIA DIAZOLES WITH AN UNUSUAL BINDING MODE AS PARTIAL DUAL PEROXISOME PROLIFERATOR-ACTIVATED RECEPTOR (PPAR) GAMMA-DELTA AGONISTS WITH HIGH POTENCY AND IN-VIVO EFFICACY
Authors : Marquette, J.-P.; Mathieu, M.
Deposited on : 2010-11-19
Resolution : 2.70 Å(reported)

This is a Full wwPDB X-ray Structure Validation Report for a publicly released PDB entry.
We welcome your comments at validation@mail.wwpdb.org
A user guide is available at
<http://wwpdb.org/validation/2016/XrayValidationReportHelp>
with specific help available everywhere you see the ⓘ symbol.

The following versions of software and data (see [references ⓘ](#)) were used in the production of this report:

MolProbity : 4.02b-467
Mogul : 1.7 (RC4), CSD as536be (2015)
Xtriage (Phenix) : 1.9-1692
EDS : rb-20026688
Percentile statistics : 20151230.v01 (using entries in the PDB archive December 30th 2015)
Refmac : 5.8.0135
CCP4 : 6.5.0
Ideal geometry (proteins) : Engh & Huber (2001)
Ideal geometry (DNA, RNA) : Parkinson et al. (1996)
Validation Pipeline (wwPDB-VP) : trunk26865

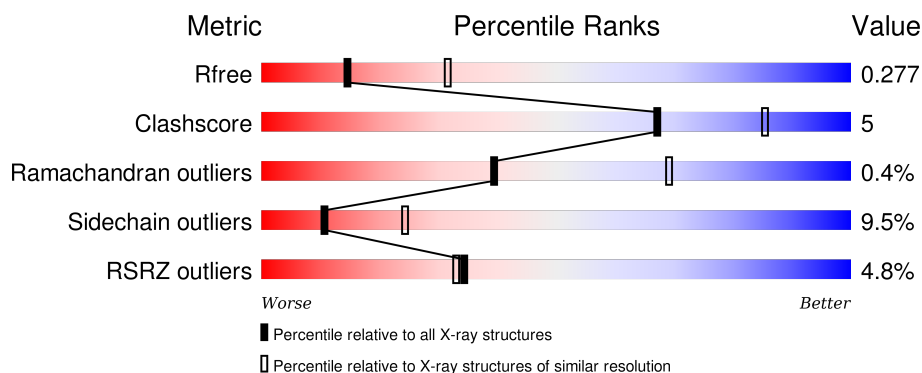
1 Overall quality at a glance

The following experimental techniques were used to determine the structure:

X-RAY DIFFRACTION

The reported resolution of this entry is 2.70 Å.

Percentile scores (ranging between 0-100) for global validation metrics of the entry are shown in the following graphic. The table shows the number of entries on which the scores are based.



Metric	Whole archive (#Entries)	Similar resolution (#Entries, resolution range(Å))
R_{free}	91344	2103 (2.70-2.70)
Clashscore	102246	2422 (2.70-2.70)
Ramachandran outliers	100387	2382 (2.70-2.70)
Sidechain outliers	100360	2382 (2.70-2.70)
RSRZ outliers	91569	2107 (2.70-2.70)

The table below summarises the geometric issues observed across the polymeric chains and their fit to the electron density. The red, orange, yellow and green segments on the lower bar indicate the fraction of residues that contain outliers for ≥ 3 , 2, 1 and 0 types of geometric quality criteria. A grey segment represents the fraction of residues that are not modelled. The numeric value for each fraction is indicated below the corresponding segment, with a dot representing fractions $\leq 5\%$. The upper red bar (where present) indicates the fraction of residues that have poor fit to the electron density. The numeric value is given above the bar.

Mol	Chain	Length	Quality of chain
1	A	288	<div> <div>5%</div> <div> <div></div> <div>77%</div> <div>11%</div> <div>•</div> <div>9%</div> </div> </div>
1	B	288	<div> <div>4%</div> <div> <div></div> <div>74%</div> <div>15%</div> <div>•</div> <div>9%</div> </div> </div>

The following table lists non-polymeric compounds, carbohydrate monomers and non-standard residues in protein, DNA, RNA chains that are outliers for geometric or electron-density-fit criteria:

Mol	Type	Chain	Res	Chirality	Geometry	Clashes	Electron density
3	BOG	A	1442	X	-	-	X
3	BOG	B	1442	X	-	-	X

2 Entry composition

There are 4 unique types of molecules in this entry. The entry contains 4363 atoms, of which 0 are hydrogens and 0 are deuteriums.

In the tables below, the ZeroOcc column contains the number of atoms modelled with zero occupancy, the AltConf column contains the number of residues with at least one atom in alternate conformation and the Trace column contains the number of residues modelled with at most 2 atoms.

- Molecule 1 is a protein called PEROXISOME PROLIFERATOR-ACTIVATED RECEPTOR DELTA.

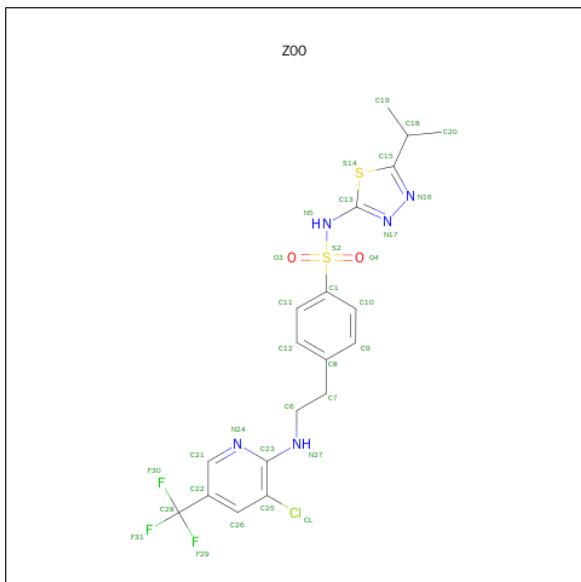
Mol	Chain	Residues	Atoms					ZeroOcc	AltConf	Trace
1	A	261	Total	C	N	O	S	0	0	0
			2106	1366	355	375	10			
1	B	263	Total	C	N	O	S	0	0	0
			2122	1376	357	379	10			

There are 22 discrepancies between the modelled and reference sequences:

Chain	Residue	Modelled	Actual	Comment	Reference
A	154	MET	-	EXPRESSION TAG	UNP Q03181
A	155	LYS	-	EXPRESSION TAG	UNP Q03181
A	156	LYS	-	EXPRESSION TAG	UNP Q03181
A	157	GLY	-	EXPRESSION TAG	UNP Q03181
A	158	HIS	-	EXPRESSION TAG	UNP Q03181
A	159	HIS	-	EXPRESSION TAG	UNP Q03181
A	160	HIS	-	EXPRESSION TAG	UNP Q03181
A	161	HIS	-	EXPRESSION TAG	UNP Q03181
A	162	HIS	-	EXPRESSION TAG	UNP Q03181
A	163	HIS	-	EXPRESSION TAG	UNP Q03181
A	164	GLY	-	EXPRESSION TAG	UNP Q03181
B	154	MET	-	EXPRESSION TAG	UNP Q03181
B	155	LYS	-	EXPRESSION TAG	UNP Q03181
B	156	LYS	-	EXPRESSION TAG	UNP Q03181
B	157	GLY	-	EXPRESSION TAG	UNP Q03181
B	158	HIS	-	EXPRESSION TAG	UNP Q03181
B	159	HIS	-	EXPRESSION TAG	UNP Q03181
B	160	HIS	-	EXPRESSION TAG	UNP Q03181
B	161	HIS	-	EXPRESSION TAG	UNP Q03181
B	162	HIS	-	EXPRESSION TAG	UNP Q03181
B	163	HIS	-	EXPRESSION TAG	UNP Q03181
B	164	GLY	-	EXPRESSION TAG	UNP Q03181

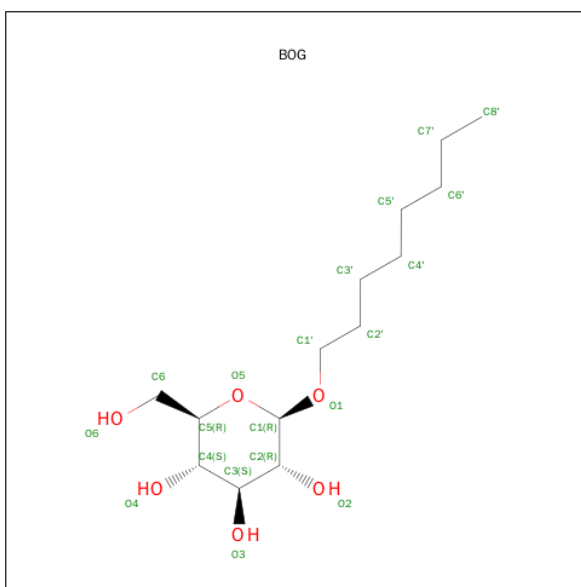
- Molecule 2 is 4-[2-[[3-CHLORO-5-(TRIFLUOROMETHYL)PYRIDIN-2-YL]AMINO]E

THYL]-N-(5-PROPAN-2-YL-1,3,4-THIADIAZOL-2-YL)BENZENESULFONAMIDE
(three-letter code: Z00) (formula: C₁₉H₁₉ClF₃N₅O₂S₂).



Mol	Chain	Residues	Atoms							ZeroOcc	AltConf
2	A	1	Total	C	Cl	F	N	O	S	0	0
			32	19	1	3	5	2	2		
2	B	1	Total	C	Cl	F	N	O	S	0	0
			32	19	1	3	5	2	2		

- Molecule 3 is SUGAR (B-OCTYLGLUCOSIDE) (three-letter code: BOG) (formula: C₁₄H₂₈O₆).



Mol	Chain	Residues	Atoms			ZeroOcc	AltConf
3	A	1	Total	C	O	0	0
			20	14	6		
3	B	1	Total	C	O	0	0
			20	14	6		

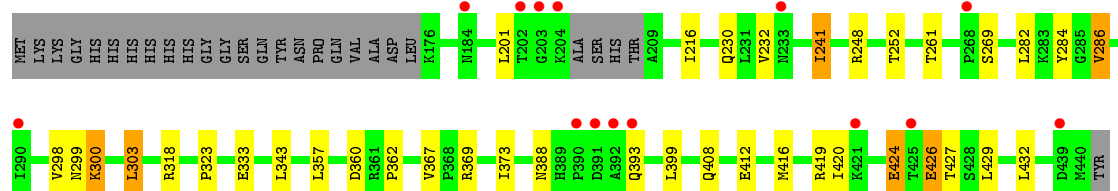
- Molecule 4 is water.

Mol	Chain	Residues	Atoms		ZeroOcc	AltConf
4	A	16	Total	O	0	0
			16	16		
4	B	15	Total	O	0	0
			15	15		

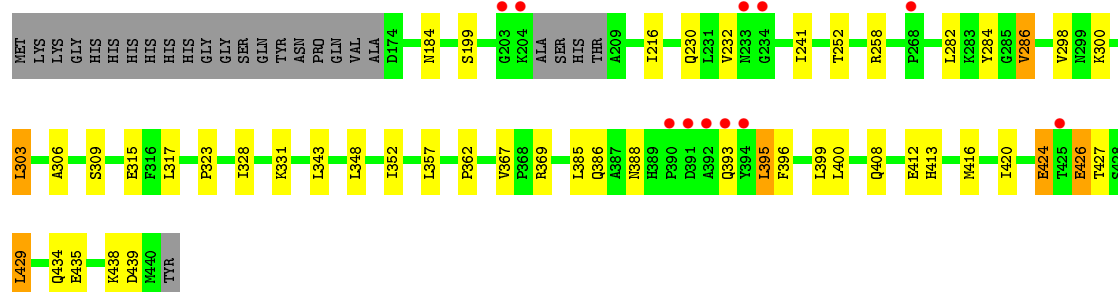
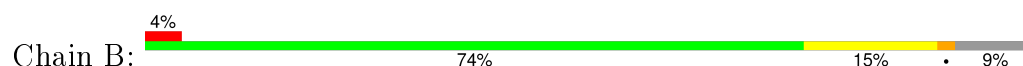
3 Residue-property plots

These plots are drawn for all protein, RNA and DNA chains in the entry. The first graphic for a chain summarises the proportions of errors displayed in the second graphic. The second graphic shows the sequence view annotated by issues in geometry and electron density. Residues are color-coded according to the number of geometric quality criteria for which they contain at least one outlier: green = 0, yellow = 1, orange = 2 and red = 3 or more. A red dot above a residue indicates a poor fit to the electron density ($RSRZ > 2$). Stretches of 2 or more consecutive residues without any outlier are shown as a green connector. Residues present in the sample, but not in the model, are shown in grey.

- Molecule 1: PEROXISOME PROLIFERATOR-ACTIVATED RECEPTOR DELTA



- Molecule 1: PEROXISOME PROLIFERATOR-ACTIVATED RECEPTOR DELTA



4 Data and refinement statistics

Property	Value	Source
Space group	P 1 21 1	Depositor
Cell constants a, b, c, α , β , γ	39.47Å 93.21Å 97.42Å 90.00° 97.66° 90.00°	Depositor
Resolution (Å)	26.37 – 2.70 36.07 – 2.70	Depositor EDS
% Data completeness (in resolution range)	92.5 (26.37-2.70) 92.5 (36.07-2.70)	Depositor EDS
R_{merge}	0.08	Depositor
R_{sym}	(Not available)	Depositor
$\langle I/\sigma(I) \rangle$ ¹	2.72 (at 2.68Å)	Xtriage
Refinement program	BUSTER 2.9.3	Depositor
R, R_{free}	0.212 , 0.264 0.227 , 0.277	Depositor DCC
R_{free} test set	1392 reflections (8.45%)	DCC
Wilson B-factor (Å ²)	43.8	Xtriage
Anisotropy	0.441	Xtriage
Bulk solvent k_{sol} (e/Å ³), B_{sol} (Å ²)	0.36 , 54.7	EDS
Estimated twinning fraction	No twinning to report.	Xtriage
L-test for twinning ²	$\langle L \rangle = 0.48$, $\langle L^2 \rangle = 0.32$	Xtriage
Outliers	1 of 17874 reflections (0.006%)	Xtriage
F_o, F_c correlation	0.91	EDS
Total number of atoms	4363	wwPDB-VP
Average B, all atoms (Å ²)	48.0	wwPDB-VP

Xtriage's analysis on translational NCS is as follows: *The largest off-origin peak in the Patterson function is 6.20% of the height of the origin peak. No significant pseudotranslation is detected.*

¹Intensities estimated from amplitudes.

²Theoretical values of $\langle |L| \rangle$, $\langle L^2 \rangle$ for acentric reflections are 0.5, 0.375 respectively for untwinned datasets, and 0.333, 0.2 for perfectly twinned datasets.

5 Model quality

5.1 Standard geometry

Bond lengths and bond angles in the following residue types are not validated in this section: Z00, BOG

The Z score for a bond length (or angle) is the number of standard deviations the observed value is removed from the expected value. A bond length (or angle) with $|Z| > 5$ is considered an outlier worth inspection. RMSZ is the root-mean-square of all Z scores of the bond lengths (or angles).

Mol	Chain	Bond lengths		Bond angles	
		RMSZ	$\# Z > 5$	RMSZ	$\# Z > 5$
1	A	0.47	0/2151	0.67	0/2905
1	B	0.48	0/2167	0.69	0/2927
All	All	0.47	0/4318	0.68	0/5832

There are no bond length outliers.

There are no bond angle outliers.

There are no chirality outliers.

There are no planarity outliers.

5.2 Too-close contacts

In the following table, the Non-H and H(model) columns list the number of non-hydrogen atoms and hydrogen atoms in the chain respectively. The H(added) column lists the number of hydrogen atoms added and optimized by MolProbity. The Clashes column lists the number of clashes within the asymmetric unit, whereas Symm-Clashes lists symmetry related clashes.

Mol	Chain	Non-H	H(model)	H(added)	Clashes	Symm-Clashes
1	A	2106	0	2156	14	0
1	B	2122	0	2171	19	0
2	A	32	0	19	2	0
2	B	32	0	19	3	0
3	A	20	0	26	7	0
3	B	20	0	26	3	0
4	A	16	0	0	0	0
4	B	15	0	0	0	0
All	All	4363	0	4417	42	0

The all-atom clashscore is defined as the number of clashes found per 1000 atoms (including hydrogen atoms). The all-atom clashscore for this structure is 5.

All (42) close contacts within the same asymmetric unit are listed below, sorted by their clash magnitude.

Atom-1	Atom-2	Interatomic distance (Å)	Clash overlap (Å)
3:A:1442:BOG:C5	3:A:1442:BOG:C4	1.80	1.58
3:B:1442:BOG:C1	3:B:1442:BOG:O5	1.66	1.43
3:A:1442:BOG:O5	3:A:1442:BOG:C1	1.67	1.40
3:A:1442:BOG:C5	3:A:1442:BOG:H4	2.12	0.73
3:A:1442:BOG:C4	3:A:1442:BOG:H5	2.15	0.72
1:A:343:LEU:HD11	1:A:399:LEU:HD21	1.78	0.66
1:B:258:ARG:HD2	3:B:1442:BOG:H61	1.78	0.64
1:B:343:LEU:HD11	1:B:399:LEU:HD21	1.80	0.61
1:A:300:LYS:HE3	1:A:300:LYS:H	1.70	0.57
1:A:252:THR:HG21	2:A:1441:Z00:H72C	1.87	0.56
1:B:216:ILE:HG12	1:B:241:ILE:HD13	1.88	0.55
3:B:1442:BOG:C1	3:B:1442:BOG:C5	2.84	0.55
1:A:216:ILE:HG12	1:A:241:ILE:HD13	1.87	0.55
3:A:1442:BOG:C5	3:A:1442:BOG:C1	2.84	0.55
1:B:282:LEU:O	1:B:286:VAL:HB	2.09	0.53
1:A:432:LEU:HD11	3:A:1442:BOG:H5'1	1.89	0.53
1:A:282:LEU:O	1:A:286:VAL:HB	2.10	0.52
1:B:284:TYR:CZ	1:B:362:PRO:HG2	2.46	0.51
1:B:323:PRO:HG2	1:B:420:ILE:HD13	1.96	0.48
1:A:261:THR:HG21	3:A:1442:BOG:H2'1	1.95	0.48
1:A:298:VAL:HG22	1:A:303:LEU:HB3	1.95	0.47
1:B:385:LEU:HD22	1:B:395:LEU:HD13	1.97	0.47
1:B:435:GLU:O	1:B:438:LYS:HB3	2.15	0.47
1:A:284:TYR:CZ	1:A:362:PRO:HG2	2.49	0.47
1:B:416:MET:O	1:B:420:ILE:HG12	2.16	0.46
1:A:323:PRO:HG2	1:A:420:ILE:HD13	1.97	0.46
1:B:298:VAL:HG22	1:B:303:LEU:HB3	1.98	0.46
1:A:416:MET:O	1:A:420:ILE:HG12	2.16	0.45
1:B:328:ILE:HD12	2:B:1441:Z00:H11	1.99	0.45
2:A:1441:Z00:H61C	2:A:1441:Z00:H12	1.57	0.45
1:A:300:LYS:H	1:A:300:LYS:CE	2.30	0.44
1:B:317:LEU:HD13	1:B:328:ILE:HG21	2.00	0.43
1:B:306:ALA:O	1:B:309:SER:OG	2.29	0.43
1:B:424:GLU:HG3	1:B:426:GLU:OE2	2.19	0.42
1:A:424:GLU:HG3	1:A:426:GLU:OE2	2.20	0.42
2:B:1441:Z00:H12	2:B:1441:Z00:H61C	1.59	0.42
1:B:252:THR:HG21	2:B:1441:Z00:H72C	2.02	0.41
1:B:429:LEU:HB3	1:B:434:GLN:HG3	2.02	0.41
1:B:331:LYS:NZ	1:B:413:HIS:HD2	2.19	0.41
1:A:269:SER:HB2	1:A:373:ILE:HG12	2.03	0.41

Continued on next page...

Continued from previous page...

Atom-1	Atom-2	Interatomic distance (Å)	Clash overlap (Å)
1:B:396:PHE:CE2	1:B:400:LEU:HD11	2.56	0.41
1:B:348:LEU:O	1:B:352:ILE:HD12	2.22	0.40

There are no symmetry-related clashes.

5.3 Torsion angles [i](#)

5.3.1 Protein backbone [i](#)

In the following table, the Percentiles column shows the percent Ramachandran outliers of the chain as a percentile score with respect to all X-ray entries followed by that with respect to entries of similar resolution.

The Analysed column shows the number of residues for which the backbone conformation was analysed, and the total number of residues.

Mol	Chain	Analysed	Favoured	Allowed	Outliers	Percentiles	
1	A	257/288 (89%)	244 (95%)	12 (5%)	1 (0%)	39	69
1	B	259/288 (90%)	246 (95%)	12 (5%)	1 (0%)	39	69
All	All	516/576 (90%)	490 (95%)	24 (5%)	2 (0%)	39	69

All (2) Ramachandran outliers are listed below:

Mol	Chain	Res	Type
1	A	426	GLU
1	B	426	GLU

5.3.2 Protein sidechains [i](#)

In the following table, the Percentiles column shows the percent sidechain outliers of the chain as a percentile score with respect to all X-ray entries followed by that with respect to entries of similar resolution.

The Analysed column shows the number of residues for which the sidechain conformation was analysed, and the total number of residues.

Mol	Chain	Analysed	Rotameric	Outliers	Percentiles	
1	A	231/253 (91%)	208 (90%)	23 (10%)	9	22
1	B	233/253 (92%)	212 (91%)	21 (9%)	12	27

Continued on next page...

Continued from previous page...

Mol	Chain	Analysed	Rotameric	Outliers	Percentiles	
All	All	464/506 (92%)	420 (90%)	44 (10%)	11	24

All (44) residues with a non-rotameric sidechain are listed below:

Mol	Chain	Res	Type
1	A	201	LEU
1	A	230	GLN
1	A	232	VAL
1	A	241	ILE
1	A	248	ARG
1	A	286	VAL
1	A	299	ASN
1	A	300	LYS
1	A	303	LEU
1	A	318	ARG
1	A	333	GLU
1	A	357	LEU
1	A	360	ASP
1	A	367	VAL
1	A	369	ARG
1	A	388	ASN
1	A	393	GLN
1	A	408	GLN
1	A	412	GLU
1	A	419	ARG
1	A	424	GLU
1	A	427	THR
1	A	429	LEU
1	B	184	ASN
1	B	199	SER
1	B	230	GLN
1	B	232	VAL
1	B	286	VAL
1	B	300	LYS
1	B	303	LEU
1	B	315	GLU
1	B	357	LEU
1	B	367	VAL
1	B	369	ARG
1	B	386	GLN
1	B	388	ASN
1	B	393	GLN

Continued on next page...

Continued from previous page...

Mol	Chain	Res	Type
1	B	395	LEU
1	B	408	GLN
1	B	412	GLU
1	B	424	GLU
1	B	427	THR
1	B	429	LEU
1	B	439	ASP

Some sidechains can be flipped to improve hydrogen bonding and reduce clashes. All (10) such sidechains are listed below:

Mol	Chain	Res	Type
1	A	184	ASN
1	A	230	GLN
1	A	384	HIS
1	A	388	ASN
1	A	413	HIS
1	B	230	GLN
1	B	384	HIS
1	B	388	ASN
1	B	393	GLN
1	B	413	HIS

5.3.3 RNA [i](#)

There are no RNA molecules in this entry.

5.4 Non-standard residues in protein, DNA, RNA chains [i](#)

There are no non-standard protein/DNA/RNA residues in this entry.

5.5 Carbohydrates [i](#)

There are no carbohydrates in this entry.

5.6 Ligand geometry [i](#)

4 ligands are modelled in this entry.

In the following table, the Counts columns list the number of bonds (or angles) for which Mogul statistics could be retrieved, the number of bonds (or angles) that are observed in the model and the number of bonds (or angles) that are defined in the chemical component dictionary. The Link column lists molecule types, if any, to which the group is linked. The Z score for a bond length (or angle) is the number of standard deviations the observed value is removed from the expected value. A bond length (or angle) with $|Z| > 2$ is considered an outlier worth inspection. RMSZ is the root-mean-square of all Z scores of the bond lengths (or angles).

Mol	Type	Chain	Res	Link	Bond lengths			Bond angles		
					Counts	RMSZ	# $ Z > 2$	Counts	RMSZ	# $ Z > 2$
2	Z00	A	1441	-	32,34,34	1.27	5 (15%)	39,50,50	3.70	14 (35%)
3	BOG	A	1442	-	20,20,20	5.30	11 (55%)	25,25,25	4.17	18 (72%)
2	Z00	B	1441	-	32,34,34	1.23	4 (12%)	39,50,50	3.64	11 (28%)
3	BOG	B	1442	-	20,20,20	4.97	11 (55%)	25,25,25	4.11	13 (52%)

In the following table, the Chirals column lists the number of chiral outliers, the number of chiral centers analysed, the number of these observed in the model and the number defined in the chemical component dictionary. Similar counts are reported in the Torsion and Rings columns. '-' means no outliers of that kind were identified.

Mol	Type	Chain	Res	Link	Chirals	Torsions	Rings
2	Z00	A	1441	-	-	0/23/27/27	0/2/3/3
3	BOG	A	1442	-	2/2/5/5	0/11/31/31	0/1/1/1
2	Z00	B	1441	-	-	0/23/27/27	0/2/3/3
3	BOG	B	1442	-	2/2/5/5	0/11/31/31	0/1/1/1

All (31) bond length outliers are listed below:

Mol	Chain	Res	Type	Atoms	Z	Observed(Å)	Ideal(Å)
2	A	1441	Z00	C13-N5	-3.13	1.35	1.40
2	B	1441	Z00	C13-N5	-2.64	1.36	1.40
2	A	1441	Z00	C6-N27	-2.55	1.40	1.46
2	B	1441	Z00	C6-N27	-2.49	1.40	1.46
2	A	1441	Z00	C28-C22	-2.47	1.44	1.49
2	A	1441	Z00	C25-C23	2.39	1.43	1.40
2	A	1441	Z00	S2-N5	2.51	1.67	1.63
2	B	1441	Z00	S2-N5	2.55	1.67	1.63
2	B	1441	Z00	C25-C23	2.78	1.43	1.40
3	B	1442	BOG	O2-C2	2.80	1.49	1.43
3	B	1442	BOG	O3-C3	3.83	1.52	1.43
3	A	1442	BOG	C1-C2	3.93	1.64	1.52
3	B	1442	BOG	C1-C2	4.05	1.64	1.52
3	B	1442	BOG	C6-C5	4.33	1.67	1.51

Continued on next page...

Continued from previous page...

Mol	Chain	Res	Type	Atoms	Z	Observed(Å)	Ideal(Å)
3	A	1442	BOG	C6-C5	4.63	1.68	1.51
3	A	1442	BOG	O2-C2	4.91	1.54	1.43
3	B	1442	BOG	C3-C2	4.99	1.65	1.52
3	A	1442	BOG	C3-C2	5.25	1.66	1.52
3	A	1442	BOG	O4-C4	5.27	1.55	1.43
3	B	1442	BOG	O4-C4	5.38	1.55	1.43
3	A	1442	BOG	O1-C1	5.75	1.50	1.40
3	A	1442	BOG	O5-C5	5.77	1.58	1.44
3	A	1442	BOG	O3-C3	5.97	1.57	1.43
3	B	1442	BOG	O5-C5	6.72	1.61	1.44
3	B	1442	BOG	C4-C3	8.08	1.73	1.52
3	A	1442	BOG	C4-C3	8.31	1.74	1.52
3	B	1442	BOG	O1-C1	8.82	1.56	1.40
3	B	1442	BOG	O5-C1	9.48	1.66	1.41
3	B	1442	BOG	C4-C5	9.77	1.73	1.53
3	A	1442	BOG	O5-C1	9.97	1.67	1.41
3	A	1442	BOG	C4-C5	12.85	1.80	1.53

All (56) bond angle outliers are listed below:

Mol	Chain	Res	Type	Atoms	Z	Observed(°)	Ideal(°)
2	B	1441	Z00	C6-C7-C8	-8.86	94.44	112.83
2	A	1441	Z00	N27-C23-N24	-8.85	106.98	119.16
2	A	1441	Z00	C1-S2-N5	-8.56	95.83	106.87
2	B	1441	Z00	N27-C23-N24	-8.45	107.53	119.16
2	A	1441	Z00	C6-C7-C8	-8.36	95.48	112.83
2	B	1441	Z00	C1-S2-N5	-7.82	96.79	106.87
3	A	1442	BOG	C1'-O1-C1	-6.27	102.98	113.94
3	A	1442	BOG	O1-C1'-C2'	-3.89	94.39	109.88
2	A	1441	Z00	C26-C25-CL	-3.20	113.56	118.50
2	A	1441	Z00	C11-C1-S2	-3.19	116.09	119.78
2	B	1441	Z00	C26-C25-CL	-3.19	113.58	118.50
2	B	1441	Z00	O4-S2-C1	-2.91	104.28	107.96
2	B	1441	Z00	C11-C1-S2	-2.59	116.78	119.78
2	A	1441	Z00	O4-S2-C1	-2.45	104.86	107.96
2	A	1441	Z00	C18-C15-N16	2.02	124.75	120.67
3	A	1442	BOG	O6-C6-C5	2.03	118.02	111.33
3	A	1442	BOG	C5'-C4'-C3'	2.05	125.13	114.53
3	A	1442	BOG	O5-C5-C6	2.13	111.74	106.36
3	A	1442	BOG	O3-C3-C2	2.16	115.20	110.34
3	A	1442	BOG	O4-C4-C5	2.41	115.63	109.24
2	A	1441	Z00	C10-C1-S2	2.44	122.61	119.78

Continued on next page...

Continued from previous page...

Mol	Chain	Res	Type	Atoms	Z	Observed(°)	Ideal(°)
2	A	1441	Z00	O3-S2-C1	2.48	111.09	107.96
3	B	1442	BOG	O6-C6-C5	2.51	119.61	111.33
3	A	1442	BOG	O1-C1-C2	2.56	111.27	108.04
3	B	1442	BOG	C5'-C4'-C3'	2.76	128.78	114.53
3	B	1442	BOG	O4-C4-C5	3.30	117.99	109.24
3	B	1442	BOG	C6'-C5'-C4'	3.32	131.67	114.53
3	A	1442	BOG	O5-C1-C2	3.61	117.68	110.28
3	A	1442	BOG	C6'-C5'-C4'	3.61	133.17	114.53
3	B	1442	BOG	C1-O5-C5	3.79	121.10	113.75
3	B	1442	BOG	O4-C4-C3	3.85	119.01	110.34
3	B	1442	BOG	C3'-C2'-C1'	3.98	131.28	113.47
3	A	1442	BOG	C1-O5-C5	3.99	121.49	113.75
3	A	1442	BOG	O5-C5-C4	4.01	117.22	109.68
3	B	1442	BOG	O2-C2-C3	4.63	120.77	110.34
3	A	1442	BOG	O3-C3-C4	5.12	121.86	110.34
3	A	1442	BOG	O2-C2-C3	5.17	121.97	110.34
2	A	1441	Z00	O4-S2-O3	5.33	126.61	119.54
3	B	1442	BOG	O3-C3-C4	5.40	122.50	110.34
3	B	1442	BOG	O5-C5-C6	5.43	120.07	106.36
3	A	1442	BOG	C3'-C2'-C1'	5.63	138.62	113.47
2	B	1441	Z00	O4-S2-O3	5.72	127.13	119.54
2	B	1441	Z00	C6-N27-C23	5.73	129.98	123.49
3	A	1442	BOG	C3-C4-C5	5.82	120.34	110.20
2	A	1441	Z00	C6-N27-C23	6.22	130.54	123.49
2	B	1441	Z00	C23-C25-CL	7.17	128.63	121.13
3	B	1442	BOG	O1-C1-C2	7.45	117.44	108.04
2	A	1441	Z00	C23-C25-CL	7.55	129.02	121.13
2	A	1441	Z00	C7-C6-N27	7.63	122.26	111.04
2	A	1441	Z00	C25-C23-N27	8.15	131.66	120.67
2	B	1441	Z00	C25-C23-N27	8.19	131.72	120.67
2	B	1441	Z00	C7-C6-N27	8.29	123.23	111.04
3	A	1442	BOG	O5-C1-O1	8.67	130.94	110.05
3	B	1442	BOG	O5-C1-O1	9.55	133.04	110.05
3	A	1442	BOG	C1-C2-C3	9.61	128.92	109.97
3	B	1442	BOG	C1-C2-C3	10.33	130.33	109.97

All (4) chirality outliers are listed below:

Mol	Chain	Res	Type	Atom
3	B	1442	BOG	C1
3	B	1442	BOG	C2
3	A	1442	BOG	C2

Continued on next page...

Continued from previous page...

Mol	Chain	Res	Type	Atom
3	A	1442	BOG	C1

There are no torsion outliers.

There are no ring outliers.

4 monomers are involved in 15 short contacts:

Mol	Chain	Res	Type	Clashes	Symm-Clashes
2	A	1441	Z00	2	0
3	A	1442	BOG	7	0
2	B	1441	Z00	3	0
3	B	1442	BOG	3	0

5.7 Other polymers [i](#)

There are no such residues in this entry.

5.8 Polymer linkage issues [i](#)

There are no chain breaks in this entry.

6 Fit of model and data ⓘ

6.1 Protein, DNA and RNA chains ⓘ

In the following table, the column labelled ‘#RSRZ> 2’ contains the number (and percentage) of RSRZ outliers, followed by percent RSRZ outliers for the chain as percentile scores relative to all X-ray entries and entries of similar resolution. The OWAB column contains the minimum, median, 95th percentile and maximum values of the occupancy-weighted average B-factor per residue. The column labelled ‘Q< 0.9’ lists the number of (and percentage) of residues with an average occupancy less than 0.9.

Mol	Chain	Analysed	<RSRZ>	#RSRZ>2	OWAB(Å ²)	Q<0.9
1	A	261/288 (90%)	0.30	14 (5%) 29 28	23, 49, 75, 110	0
1	B	263/288 (91%)	0.06	11 (4%) 40 39	22, 43, 68, 101	0
All	All	524/576 (90%)	0.18	25 (4%) 34 33	22, 46, 72, 110	0

All (25) RSRZ outliers are listed below:

Mol	Chain	Res	Type	RSRZ
1	A	392	ALA	6.4
1	A	202	THR	4.4
1	A	203	GLY	4.2
1	A	425	THR	3.8
1	A	204	LYS	3.8
1	A	393	GLN	3.5
1	A	391	ASP	3.5
1	B	391	ASP	3.5
1	B	203	GLY	3.4
1	B	204	LYS	3.2
1	B	425	THR	3.1
1	B	393	GLN	3.0
1	A	233	ASN	3.0
1	B	268	PRO	2.6
1	B	390	PRO	2.6
1	A	439	ASP	2.5
1	A	390	PRO	2.4
1	A	184	ASN	2.4
1	B	234	GLY	2.3
1	A	421	LYS	2.2
1	A	290	ILE	2.2
1	B	394	TYR	2.2
1	B	233	ASN	2.2
1	A	268	PRO	2.2

Continued on next page...

Continued from previous page...

Mol	Chain	Res	Type	RSRZ
1	B	392	ALA	2.2

6.2 Non-standard residues in protein, DNA, RNA chains [i](#)

There are no non-standard protein/DNA/RNA residues in this entry.

6.3 Carbohydrates [i](#)

There are no carbohydrates in this entry.

6.4 Ligands [i](#)

In the following table, the Atoms column lists the number of modelled atoms in the group and the number defined in the chemical component dictionary. LLDF column lists the quality of electron density of the group with respect to its neighbouring residues in protein, DNA or RNA chains. The B-factors column lists the minimum, median, 95th percentile and maximum values of B factors of atoms in the group. The column labelled 'Q< 0.9' lists the number of atoms with occupancy less than 0.9.

Mol	Type	Chain	Res	Atoms	RSCC	RSR	LLDF	B-factors(Å ²)	Q<0.9
3	BOG	A	1442	20/20	0.44	0.47	10.78	48,78,84,85	0
3	BOG	B	1442	20/20	0.52	0.44	8.21	50,85,88,88	0
2	Z00	A	1441	32/32	0.95	0.21	0.52	41,46,51,55	0
2	Z00	B	1441	32/32	0.95	0.19	0.48	35,41,47,48	0

6.5 Other polymers [i](#)

There are no such residues in this entry.