



Full wwPDB X-ray Structure Validation Report ⓘ

Feb 1, 2016 – 10:30 PM GMT

PDB ID : 4Y0D
Title : Gamma-aminobutyric acid aminotransferase inactivated by (1S,3S)-3-amino-4-difluoromethylenyl-1-cyclopentanoic acid (CPP-115)
Authors : Rui, W.; Ruslan, S.; Hyunbeom, L.; Emma, H.D.; Jose, I.J.; Neil, K.; Richard, B.S.; Dali, L.
Deposited on : 2015-02-05
Resolution : 2.19 Å(reported)

This is a Full wwPDB X-ray Structure Validation Report for a publicly released PDB entry.
We welcome your comments at validation@mail.wwpdb.org
A user guide is available at
<http://wwpdb.org/validation/2016/XrayValidationReportHelp>
with specific help available everywhere you see the ⓘ symbol.

The following versions of software and data (see [references ⓘ](#)) were used in the production of this report:

MolProbity : 4.02b-467
Mogul : 1.7 (RC4), CSD as536be (2015)
Xtriage (Phenix) : 1.9-1692
EDS : rb-20026688
Percentile statistics : 20151230.v01 (using entries in the PDB archive December 30th 2015)
Refmac : 5.8.0135
CCP4 : 6.5.0
Ideal geometry (proteins) : Engh & Huber (2001)
Ideal geometry (DNA, RNA) : Parkinson et al. (1996)
Validation Pipeline (wwPDB-VP) : trunk26865

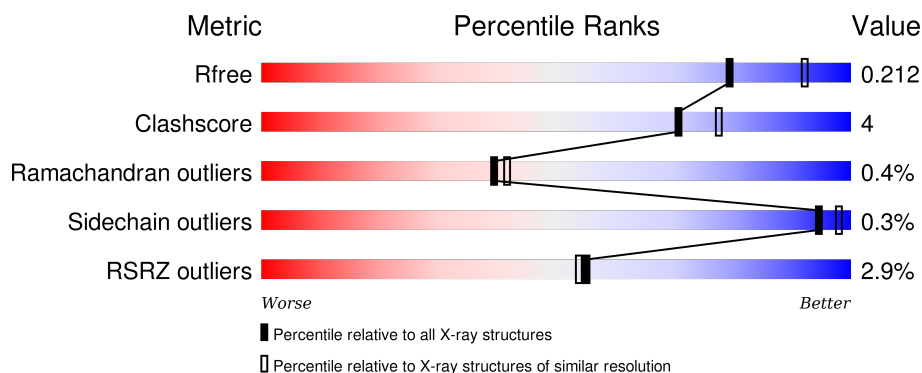
1 Overall quality at a glance ⓘ

The following experimental techniques were used to determine the structure:

X-RAY DIFFRACTION

The reported resolution of this entry is 2.19 Å.

Percentile scores (ranging between 0-100) for global validation metrics of the entry are shown in the following graphic. The table shows the number of entries on which the scores are based.



Metric	Whole archive (#Entries)	Similar resolution (#Entries, resolution range(Å))
R_{free}	91344	3774 (2.20-2.20)
Clashscore	102246	4477 (2.20-2.20)
Ramachandran outliers	100387	4404 (2.20-2.20)
Sidechain outliers	100360	4405 (2.20-2.20)
RSRZ outliers	91569	3781 (2.20-2.20)

The table below summarises the geometric issues observed across the polymeric chains and their fit to the electron density. The red, orange, yellow and green segments on the lower bar indicate the fraction of residues that contain outliers for ≥ 3 , 2, 1 and 0 types of geometric quality criteria. A grey segment represents the fraction of residues that are not modelled. The numeric value for each fraction is indicated below the corresponding segment, with a dot representing fractions $\leq 5\%$. The upper red bar (where present) indicates the fraction of residues that have poor fit to the electron density. The numeric value is given above the bar.

Mol	Chain	Length	Quality of chain
1	A	463	<div> <div>2%</div> <div>93%</div> <div>6%</div> </div>
1	B	463	<div> <div>5%</div> <div>89%</div> <div>10%</div> </div>
1	C	463	<div> <div>2%</div> <div>90%</div> <div>10%</div> </div>
1	D	463	<div> <div>2%</div> <div>89%</div> <div>10%</div> </div>

The following table lists non-polymeric compounds, carbohydrate monomers and non-standard

residues in protein, DNA, RNA chains that are outliers for geometric or electron-density-fit criteria:

Mol	Type	Chain	Res	Chirality	Geometry	Clashes	Electron density
3	RW2	A	502	-	-	-	X
3	RW2	C	503	-	-	-	X

2 Entry composition

There are 5 unique types of molecules in this entry. The entry contains 16338 atoms, of which 0 are hydrogens and 0 are deuteriums.

In the tables below, the ZeroOcc column contains the number of atoms modelled with zero occupancy, the AltConf column contains the number of residues with at least one atom in alternate conformation and the Trace column contains the number of residues modelled with at most 2 atoms.

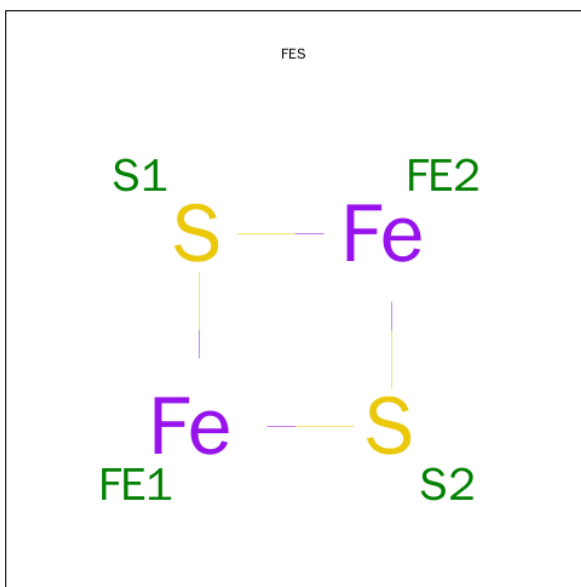
- Molecule 1 is a protein called 4-aminobutyrate aminotransferase, mitochondrial.

Mol	Chain	Residues	Atoms					ZeroOcc	AltConf	Trace
1	A	462	Total	C	N	O	S	0	6	0
			3701	2358	644	675	24			
1	B	461	Total	C	N	O	S	0	6	0
			3696	2355	643	674	24			
1	C	462	Total	C	N	O	S	0	6	0
			3701	2358	644	675	24			
1	D	461	Total	C	N	O	S	0	6	0
			3696	2355	643	674	24			

There are 8 discrepancies between the modelled and reference sequences:

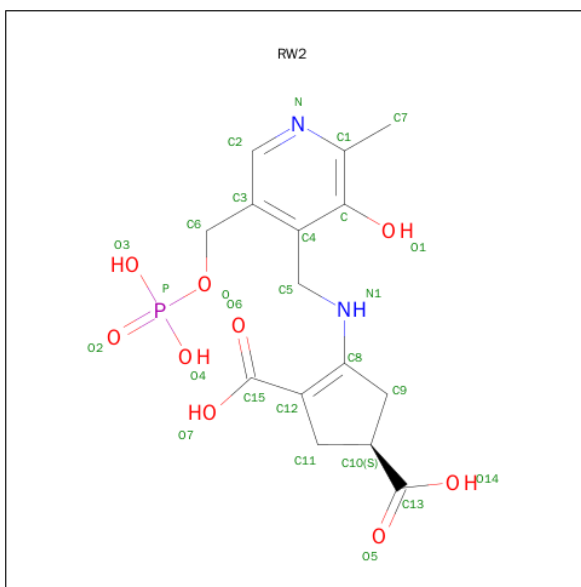
Chain	Residue	Modelled	Actual	Comment	Reference
A	10	ALA	-	expression tag	UNP P80147
A	158	GLU	GLN	conflict	UNP P80147
B	10	ALA	-	expression tag	UNP P80147
B	158	GLU	GLN	conflict	UNP P80147
C	10	ALA	-	expression tag	UNP P80147
C	158	GLU	GLN	conflict	UNP P80147
D	10	ALA	-	expression tag	UNP P80147
D	158	GLU	GLN	conflict	UNP P80147

- Molecule 2 is FE2/S2 (INORGANIC) CLUSTER (three-letter code: FES) (formula: Fe₂S₂).



Mol	Chain	Residues	Atoms			ZeroOcc	AltConf
2	A	1	Total	Fe	S	0	0
			4	2	2		
2	C	1	Total	Fe	S	0	0
			4	2	2		

- Molecule 3 is (1S)-4-[(3-hydroxy-2-methyl-5-[(phosphonoxy)methyl]pyridin-4-yl)methyl]amino)cyclopent-3-ene-1,3-dicarboxylic acid (three-letter code: RW2) (formula: C₁₅H₁₉N₂O₉P).



Mol	Chain	Residues	Atoms					ZeroOcc	AltConf
3	A	1	Total	C	N	O	P	0	0
			27	15	2	9	1		

Continued on next page...

Continued from previous page...

Mol	Chain	Residues	Atoms					ZeroOcc	AltConf
3	B	1	Total	C	N	O	P	0	0
			27	15	2	9	1		
3	C	1	Total	C	N	O	P	0	0
			27	15	2	9	1		
3	D	1	Total	C	N	O	P	0	0
			27	15	2	9	1		

- Molecule 4 is GLYCEROL (three-letter code: GOL) (formula: $C_3H_8O_3$).



Mol	Chain	Residues	Atoms			ZeroOcc	AltConf
4	C	1	Total	C	O	0	0
			6	3	3		

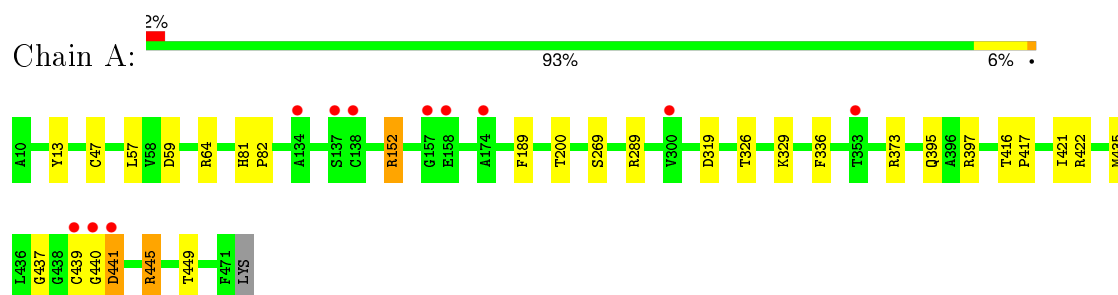
- Molecule 5 is water.

Mol	Chain	Residues	Atoms		ZeroOcc	AltConf
5	A	343	Total	O	0	0
			343	343		
5	B	325	Total	O	0	0
			325	325		
5	C	381	Total	O	0	0
			381	381		
5	D	373	Total	O	0	0
			373	373		

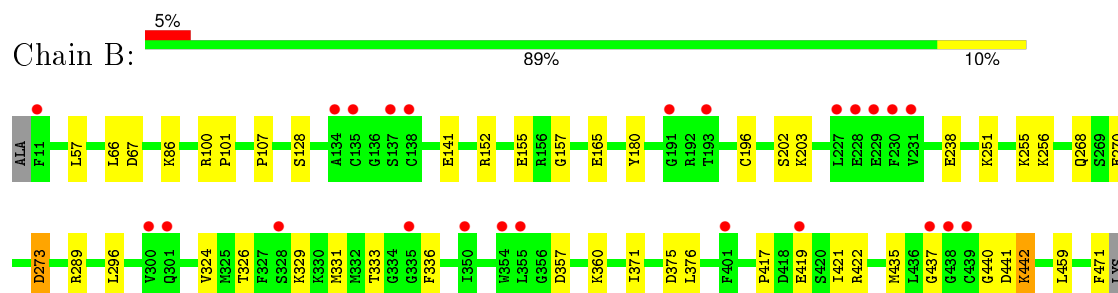
3 Residue-property plots [i](#)

These plots are drawn for all protein, RNA and DNA chains in the entry. The first graphic for a chain summarises the proportions of errors displayed in the second graphic. The second graphic shows the sequence view annotated by issues in geometry and electron density. Residues are color-coded according to the number of geometric quality criteria for which they contain at least one outlier: green = 0, yellow = 1, orange = 2 and red = 3 or more. A red dot above a residue indicates a poor fit to the electron density ($RSRZ > 2$). Stretches of 2 or more consecutive residues without any outlier are shown as a green connector. Residues present in the sample, but not in the model, are shown in grey.

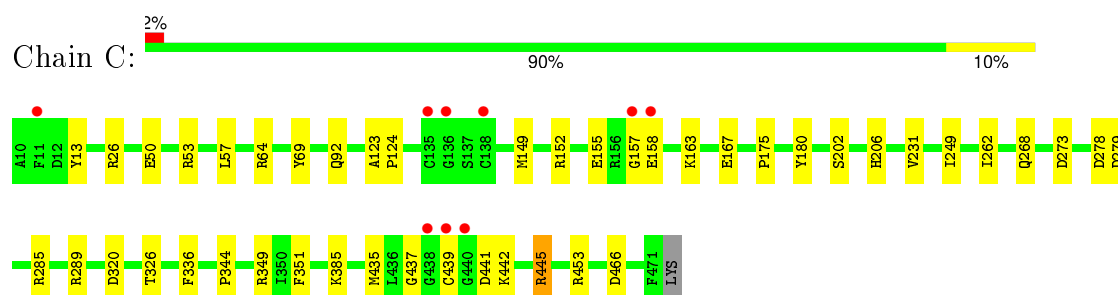
- Molecule 1: 4-aminobutyrate aminotransferase, mitochondrial



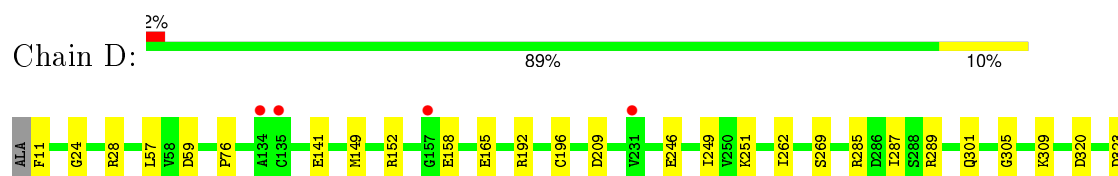
- Molecule 1: 4-aminobutyrate aminotransferase, mitochondrial



- Molecule 1: 4-aminobutyrate aminotransferase, mitochondrial



- Molecule 1: 4-aminobutyrate aminotransferase, mitochondrial





4 Data and refinement statistics

Property	Value	Source
Space group	P 1 21 1	Depositor
Cell constants a, b, c, α , β , γ	69.56 Å 227.28 Å 71.00 Å 90.00° 108.83° 90.00°	Depositor
Resolution (Å)	36.12 – 2.19 49.69 – 2.19	Depositor EDS
% Data completeness (in resolution range)	99.4 (36.12-2.19) 99.4 (49.69-2.19)	Depositor EDS
R_{merge}	(Not available)	Depositor
R_{sym}	(Not available)	Depositor
$\langle I/\sigma(I) \rangle$ ¹	1.94 (at 2.18 Å)	Xtriage
Refinement program	PHENIX (phenix.refine: 1.9_1692)	Depositor
R, R_{free}	0.168 , 0.209 0.173 , 0.212	Depositor DCC
R_{free} test set	5284 reflections (5.24%)	DCC
Wilson B-factor (Å ²)	28.2	Xtriage
Anisotropy	0.038	Xtriage
Bulk solvent k_{sol} (e/Å ³), B_{sol} (Å ²)	0.33 , 46.4	EDS
Estimated twinning fraction	0.017 for l,-k,h	Xtriage
L-test for twinning ²	$\langle L \rangle = 0.50$, $\langle L^2 \rangle = 0.33$	Xtriage
Outliers	1 of 106096 reflections (0.001%)	Xtriage
F_o, F_c correlation	0.96	EDS
Total number of atoms	16338	wwPDB-VP
Average B, all atoms (Å ²)	33.0	wwPDB-VP

Xtriage's analysis on translational NCS is as follows: *The largest off-origin peak in the Patterson function is 3.12% of the height of the origin peak. No significant pseudotranslation is detected.*

¹ Intensities estimated from amplitudes.

² Theoretical values of $\langle |L| \rangle$, $\langle L^2 \rangle$ for acentric reflections are 0.5, 0.375 respectively for untwinned datasets, and 0.333, 0.2 for perfectly twinned datasets.

5 Model quality [i](#)

5.1 Standard geometry [i](#)

Bond lengths and bond angles in the following residue types are not validated in this section: GOL, RW2, FES

The Z score for a bond length (or angle) is the number of standard deviations the observed value is removed from the expected value. A bond length (or angle) with $|Z| > 5$ is considered an outlier worth inspection. RMSZ is the root-mean-square of all Z scores of the bond lengths (or angles).

Mol	Chain	Bond lengths		Bond angles	
		RMSZ	# Z >5	RMSZ	# Z >5
1	A	0.26	0/3805	0.42	0/5136
1	B	0.27	0/3800	0.43	0/5129
1	C	0.27	0/3805	0.42	0/5136
1	D	0.26	0/3800	0.42	0/5129
All	All	0.27	0/15210	0.42	0/20530

There are no bond length outliers.

There are no bond angle outliers.

There are no chirality outliers.

There are no planarity outliers.

5.2 Too-close contacts [i](#)

In the following table, the Non-H and H(model) columns list the number of non-hydrogen atoms and hydrogen atoms in the chain respectively. The H(added) column lists the number of hydrogen atoms added and optimized by MolProbity. The Clashes column lists the number of clashes within the asymmetric unit, whereas Symm-Clashes lists symmetry related clashes.

Mol	Chain	Non-H	H(model)	H(added)	Clashes	Symm-Clashes
1	A	3701	0	3660	23	0
1	B	3696	0	3655	38	0
1	C	3701	0	3660	34	0
1	D	3696	0	3655	34	0
2	A	4	0	0	0	0
2	C	4	0	0	0	0
3	A	27	0	14	2	0
3	B	27	0	15	3	0
3	C	27	0	14	0	0

Continued on next page...

Continued from previous page...

Mol	Chain	Non-H	H(model)	H(added)	Clashes	Symm-Clashes
3	D	27	0	14	1	0
4	C	6	0	8	1	0
5	A	343	0	0	10	1
5	B	325	0	0	13	1
5	C	381	0	0	13	1
5	D	373	0	0	10	2
All	All	16338	0	14695	129	3

The all-atom clashscore is defined as the number of clashes found per 1000 atoms (including hydrogen atoms). The all-atom clashscore for this structure is 4.

All (129) close contacts within the same asymmetric unit are listed below, sorted by their clash magnitude.

Atom-1	Atom-2	Interatomic distance (Å)	Clash overlap (Å)
1:C:202:SER:OG	5:C:946:HOH:O	1.86	0.92
1:C:279:ASP:OD1	5:C:601:HOH:O	1.91	0.88
1:C:453:ARG:NH2	5:C:902:HOH:O	2.09	0.84
3:A:502:RW2:O4	5:A:794:HOH:O	1.94	0.83
1:B:375:ASP:OD1	5:B:601:HOH:O	1.96	0.82
1:B:180:TYR:O	5:B:650:HOH:O	1.97	0.81
1:C:206:HIS:ND1	5:C:946:HOH:O	2.15	0.78
1:C:167:GLU:OE1	5:C:870:HOH:O	2.02	0.78
1:B:128:SER:O	5:B:809:HOH:O	2.04	0.74
1:D:437:GLY:N	5:D:761:HOH:O	2.19	0.73
1:A:319:ASP:OD2	5:A:831:HOH:O	2.08	0.69
1:D:454:ASP:OD1	5:D:601:HOH:O	2.10	0.69
1:A:395:GLN:O	5:A:723:HOH:O	2.10	0.68
1:A:289[B]:ARG:NH1	5:A:809:HOH:O	2.27	0.68
1:B:471:PHE:O	5:B:746:HOH:O	2.10	0.67
1:B:440:GLY:O	5:B:825:HOH:O	2.12	0.67
1:A:289[B]:ARG:NH1	5:A:795:HOH:O	2.28	0.66
3:B:501:RW2:O3	5:B:905:HOH:O	2.03	0.66
1:A:437:GLY:N	5:A:872:HOH:O	2.27	0.66
1:C:466:ASP:OD2	5:C:602:HOH:O	2.13	0.66
1:C:163:LYS:HE3	1:C:167:GLU:HG3	1.79	0.65
1:C:26:ARG:HG2	5:C:962:HOH:O	1.95	0.65
1:C:439:CYS:SG	1:C:445:ARG:HD2	2.37	0.64
1:A:417:PRO:HB2	1:A:421:ILE:HD12	1.80	0.63
1:B:155:GLU:OE1	1:B:180:TYR:OH	2.18	0.61
1:D:11:PHE:N	5:D:913:HOH:O	2.34	0.61
1:B:152[A]:ARG:NH2	1:B:165:GLU:OE2	2.34	0.60

Continued on next page...

Continued from previous page...

Atom-1	Atom-2	Interatomic distance (Å)	Clash overlap (Å)
1:B:152[A]:ARG:NH1	5:B:799:HOH:O	2.34	0.60
1:A:329:LYS:HE3	3:A:502:RW2:H11	1.85	0.59
1:C:92:GLN:OE1	5:C:810:HOH:O	2.17	0.57
1:D:59:ASP:OD2	5:D:669:HOH:O	2.17	0.57
1:B:419:GLU:OE2	1:B:441:ASP:HB3	2.05	0.57
1:C:152[A]:ARG:NH1	5:C:897:HOH:O	2.36	0.57
1:A:439:CYS:HB3	1:A:445:ARG:HD2	1.90	0.54
1:C:152[A]:ARG:NH2	1:C:175:PRO:O	2.41	0.54
1:D:397:ARG:NH2	5:D:779:HOH:O	2.42	0.53
1:A:326:THR:HG22	1:A:336:PHE:HB3	1.90	0.52
1:D:152[A]:ARG:NH2	1:D:165:GLU:OE2	2.43	0.52
1:D:249:ILE:HD11	1:D:262:ILE:HD11	1.92	0.51
1:D:158:GLU:OE2	5:D:602:HOH:O	2.18	0.51
1:D:289[B]:ARG:NH2	1:D:320:ASP:OD2	2.43	0.51
1:B:326:THR:HG22	1:B:336:PHE:HB3	1.93	0.51
1:B:202:SER:OG	5:B:823:HOH:O	2.19	0.51
1:D:269:SER:HB2	5:D:853:HOH:O	2.11	0.51
1:B:331:MET:O	1:B:333:THR:N	2.42	0.51
1:B:270:GLU:OE1	3:B:501:RW2:O7	2.29	0.50
1:C:50:GLU:O	1:C:53:ARG:NH2	2.44	0.49
1:C:385:LYS:NZ	5:C:903:HOH:O	2.44	0.49
1:D:430:ARG:NH1	5:D:951:HOH:O	2.46	0.49
1:A:397:ARG:NH2	5:A:756:HOH:O	2.45	0.48
1:B:268:GLN:O	1:B:273:ASP:HA	2.12	0.48
1:C:149:MET:HE1	1:C:344:PRO:HB3	1.94	0.48
1:A:373:ARG:HD2	5:A:628:HOH:O	2.12	0.48
1:B:442:LYS:HB2	5:B:825:HOH:O	2.14	0.48
1:A:439:CYS:CB	1:A:445:ARG:HD2	2.44	0.47
1:C:268:GLN:O	1:C:273:ASP:HA	2.14	0.47
1:B:66:LEU:HD22	1:B:459:LEU:HD23	1.95	0.47
1:C:351:PHE:O	1:D:192:ARG:HG3	2.15	0.47
1:B:203:LYS:NZ	1:B:270:GLU:OE2	2.33	0.47
1:C:152[A]:ARG:HG2	1:C:180:TYR:HE2	1.80	0.47
1:B:289[B]:ARG:NH2	5:B:759:HOH:O	2.34	0.47
1:D:331:MET:O	1:D:333:THR:N	2.46	0.47
1:C:53:ARG:NH1	5:C:941:HOH:O	2.47	0.46
1:D:285:ARG:HH21	1:D:289[B]:ARG:HH21	1.62	0.46
1:B:329:LYS:HE3	3:B:501:RW2:H11	1.98	0.46
1:C:326:THR:HG22	1:C:336:PHE:HB3	1.98	0.46
1:A:57:LEU:HD23	1:A:435[B]:MET:SD	2.55	0.46
1:D:152[B]:ARG:HA	1:D:152[B]:ARG:HD2	1.78	0.46

Continued on next page...

Continued from previous page...

Atom-1	Atom-2	Interatomic distance (Å)	Clash overlap (Å)
1:D:285:ARG:NH2	1:D:289[B]:ARG:HH21	2.13	0.46
1:B:251:LYS:HE2	1:B:255:LYS:HE2	1.98	0.46
1:C:289[B]:ARG:NH1	5:C:766:HOH:O	2.35	0.46
1:C:13:TYR:CD1	1:C:64:ARG:HD2	2.51	0.46
1:B:422:ARG:HH22	1:B:441:ASP:HA	1.79	0.45
1:D:458:HIS:ND1	5:D:603:HOH:O	2.36	0.45
1:A:47:CYS:HA	1:A:59:ASP:HA	1.98	0.45
1:C:149:MET:HG2	1:C:349:ARG:NH2	2.32	0.45
1:D:323:ASP:HB3	1:D:342:PHE:CE1	2.51	0.45
1:A:449:THR:HG22	5:A:730:HOH:O	2.16	0.45
1:B:437:GLY:N	5:B:677:HOH:O	2.46	0.45
1:D:402[A]:ILE:HD11	1:D:468:LEU:HD11	1.97	0.45
1:B:152[A]:ARG:HD2	1:B:152[A]:ARG:HA	1.78	0.45
1:D:301:GLN:HB2	1:D:301:GLN:HE21	1.61	0.45
1:B:152[A]:ARG:NH1	5:B:710:HOH:O	2.50	0.45
1:D:251:LYS:NZ	5:D:608:HOH:O	2.50	0.45
1:A:152[B]:ARG:NE	5:A:768:HOH:O	2.50	0.45
1:D:305:GLY:HA2	1:D:309:LYS:O	2.17	0.45
1:C:441:ASP:OD1	1:C:442:LYS:HG2	2.17	0.45
1:A:189:PHE:HA	1:A:200:THR:HG23	1.98	0.44
1:D:301:GLN:NE2	3:D:501:RW2:O1	2.49	0.44
1:D:149:MET:HG2	1:D:349:ARG:NH2	2.32	0.44
1:B:296:LEU:HD13	1:B:324:VAL:HB	2.00	0.44
1:C:157:GLY:HA2	1:C:158:GLU:HA	1.61	0.44
1:C:123:ALA:HA	1:C:124:PRO:HD3	1.90	0.43
1:B:422:ARG:NH2	1:B:441:ASP:HA	2.34	0.43
1:B:417:PRO:HB2	1:B:421:ILE:HD12	2.00	0.43
1:D:357:ASP:HB3	1:D:360:LYS:HG2	2.00	0.43
1:B:238:GLU:OE1	5:B:764:HOH:O	2.21	0.43
1:D:246:GLU:HG3	1:D:287:ILE:HD13	2.00	0.43
1:C:155:GLU:OE1	1:C:180:TYR:OH	2.36	0.43
1:B:256:LYS:HB2	1:B:256:LYS:HE3	1.55	0.43
1:D:326:THR:HG22	1:D:336:PHE:HB3	2.01	0.43
1:C:278:ASP:HB2	4:C:502:GOL:H12	2.00	0.43
1:C:57:LEU:HD23	1:C:435[B]:MET:SD	2.59	0.43
1:B:100:ARG:HA	1:B:101:PRO:HD3	1.74	0.42
1:B:152[B]:ARG:HD2	1:B:152[B]:ARG:HA	1.75	0.42
1:A:422:ARG:HH22	1:A:441:ASP:HA	1.84	0.42
1:B:357:ASP:HB3	1:B:360:LYS:HG2	2.02	0.42
1:C:69:TYR:CD1	1:C:437:GLY:HA3	2.55	0.42
1:B:141:GLU:HG2	1:B:196:CYS:SG	2.60	0.42

Continued on next page...

Continued from previous page...

Atom-1	Atom-2	Interatomic distance (Å)	Clash overlap (Å)
1:A:81:HIS:HA	1:A:82:PRO:HD3	1.95	0.41
1:D:24:GLY:O	1:D:28:ARG:HG3	2.20	0.41
1:A:416:THR:HB	1:A:417:PRO:HD2	2.03	0.41
1:A:13:TYR:CD1	1:A:64:ARG:HD2	2.56	0.41
1:C:285:ARG:HH21	1:C:320:ASP:CG	2.24	0.41
1:A:269:SER:HB3	1:A:445:ARG:HH11	1.85	0.41
1:D:441:ASP:OD1	1:D:441:ASP:N	2.51	0.41
1:D:141:GLU:HG2	1:D:196:CYS:SG	2.61	0.41
1:D:57:LEU:HD23	1:D:435[B]:MET:SD	2.61	0.41
5:C:702:HOH:O	1:D:152[A]:ARG:NE	2.53	0.41
1:D:439:CYS:O	1:D:443:SER:HB2	2.21	0.41
1:C:249:ILE:HD11	1:C:262:ILE:HD11	2.03	0.41
1:B:86:LYS:HD2	1:B:86:LYS:HA	1.69	0.41
1:B:67:ASP:HA	1:B:435[A]:MET:HB3	2.02	0.41
1:B:57:LEU:HD23	1:B:435[B]:MET:SD	2.61	0.41
1:C:152[A]:ARG:HG2	1:C:180:TYR:CE2	2.55	0.40
1:C:152[B]:ARG:HG2	1:D:209:ASP:OD1	2.22	0.40
1:A:439:CYS:SG	1:A:445:ARG:HB3	2.62	0.40
1:B:67:ASP:HA	1:B:435[B]:MET:HB2	2.02	0.40
1:B:371:ILE:HA	1:B:376:LEU:HD12	2.02	0.40

All (3) symmetry-related close contacts are listed below. The label for Atom-2 includes the symmetry operator and encoded unit-cell translations to be applied.

Atom-1	Atom-2	Interatomic distance (Å)	Clash overlap (Å)
5:C:604:HOH:O	5:D:636:HOH:O[1_454]	1.96	0.24
5:A:631:HOH:O	5:B:634:HOH:O[1_454]	2.00	0.20
5:D:602:HOH:O	5:D:646:HOH:O[1_455]	2.02	0.18

5.3 Torsion angles ⓘ

5.3.1 Protein backbone ⓘ

In the following table, the Percentiles column shows the percent Ramachandran outliers of the chain as a percentile score with respect to all X-ray entries followed by that with respect to entries of similar resolution.

The Analysed column shows the number of residues for which the backbone conformation was analysed, and the total number of residues.

Mol	Chain	Analysed	Favoured	Allowed	Outliers	Percentiles	
1	A	466/463 (101%)	444 (95%)	20 (4%)	2 (0%)	39	42
1	B	465/463 (100%)	441 (95%)	22 (5%)	2 (0%)	39	42
1	C	466/463 (101%)	445 (96%)	20 (4%)	1 (0%)	52	59
1	D	465/463 (100%)	446 (96%)	17 (4%)	2 (0%)	39	42
All	All	1862/1852 (100%)	1776 (95%)	79 (4%)	7 (0%)	39	42

All (7) Ramachandran outliers are listed below:

Mol	Chain	Res	Type
1	A	441	ASP
1	B	157	GLY
1	B	442	LYS
1	C	231	VAL
1	D	328	SER
1	A	440	GLY
1	D	76	PRO

5.3.2 Protein sidechains ⓘ

In the following table, the Percentiles column shows the percent sidechain outliers of the chain as a percentile score with respect to all X-ray entries followed by that with respect to entries of similar resolution.

The Analysed column shows the number of residues for which the sidechain conformation was analysed, and the total number of residues.

Mol	Chain	Analysed	Rotameric	Outliers	Percentiles	
1	A	403/401 (100%)	400 (99%)	3 (1%)	88	94
1	B	403/401 (100%)	401 (100%)	2 (0%)	92	96
1	C	403/401 (100%)	402 (100%)	1 (0%)	95	98
1	D	403/401 (100%)	403 (100%)	0	100	100
All	All	1612/1604 (100%)	1606 (100%)	6 (0%)	94	97

All (6) residues with a non-rotameric sidechain are listed below:

Mol	Chain	Res	Type
1	A	152[A]	ARG
1	A	152[B]	ARG
1	A	445	ARG
1	B	107	PRO

Continued on next page...

Continued from previous page...

Mol	Chain	Res	Type
1	B	273	ASP
1	C	445	ARG

Some sidechains can be flipped to improve hydrogen bonding and reduce clashes. All (2) such sidechains are listed below:

Mol	Chain	Res	Type
1	B	462	ASN
1	C	90	GLN

5.3.3 RNA [i](#)

There are no RNA molecules in this entry.

5.4 Non-standard residues in protein, DNA, RNA chains [i](#)

There are no non-standard protein/DNA/RNA residues in this entry.

5.5 Carbohydrates [i](#)

There are no carbohydrates in this entry.

5.6 Ligand geometry [i](#)

7 ligands are modelled in this entry.

In the following table, the Counts columns list the number of bonds (or angles) for which Mogul statistics could be retrieved, the number of bonds (or angles) that are observed in the model and the number of bonds (or angles) that are defined in the chemical component dictionary. The Link column lists molecule types, if any, to which the group is linked. The Z score for a bond length (or angle) is the number of standard deviations the observed value is removed from the expected value. A bond length (or angle) with $|Z| > 2$ is considered an outlier worth inspection. RMSZ is the root-mean-square of all Z scores of the bond lengths (or angles).

Mol	Type	Chain	Res	Link	Bond lengths			Bond angles		
					Counts	RMSZ	$\# Z > 2$	Counts	RMSZ	$\# Z > 2$
2	FES	A	501	1	0,4,4	0.00	-	0,4,4	0.00	-
3	RW2	A	502	-	23,28,28	3.26	8 (34%)	27,41,41	1.72	8 (29%)
3	RW2	B	501	-	23,28,28	3.39	7 (30%)	27,41,41	1.67	6 (22%)
2	FES	C	501	1	0,4,4	0.00	-	0,4,4	0.00	-

Mol	Type	Chain	Res	Link	Bond lengths			Bond angles		
					Counts	RMSZ	# Z > 2	Counts	RMSZ	# Z > 2
4	GOL	C	502	-	5,5,5	0.34	0	5,5,5	0.26	0
3	RW2	C	503	-	23,28,28	3.38	6 (26%)	27,41,41	1.57	4 (14%)
3	RW2	D	501	-	23,28,28	3.02	6 (26%)	27,41,41	1.73	5 (18%)

In the following table, the Chirals column lists the number of chiral outliers, the number of chiral centers analysed, the number of these observed in the model and the number defined in the chemical component dictionary. Similar counts are reported in the Torsion and Rings columns. '-' means no outliers of that kind were identified.

Mol	Type	Chain	Res	Link	Chirals	Torsions	Rings
2	FES	A	501	1	-	0/0/4/4	0/1/1/1
3	RW2	A	502	-	-	0/11/31/31	0/2/2/2
3	RW2	B	501	-	-	0/11/31/31	0/2/2/2
2	FES	C	501	1	-	0/0/4/4	0/1/1/1
4	GOL	C	502	-	-	0/4/4/4	0/0/0/0
3	RW2	C	503	-	-	0/11/31/31	0/2/2/2
3	RW2	D	501	-	-	0/11/31/31	0/2/2/2

All (27) bond length outliers are listed below:

Mol	Chain	Res	Type	Atoms	Z	Observed(Å)	Ideal(Å)
3	A	502	RW2	P-O3	-3.00	1.43	1.54
3	B	501	RW2	C15-C12	-2.97	1.46	1.51
3	B	501	RW2	C11-C12	-2.65	1.48	1.51
3	D	501	RW2	P-O3	-2.61	1.45	1.54
3	A	502	RW2	C15-C12	-2.56	1.46	1.51
3	C	503	RW2	C15-C12	-2.55	1.46	1.51
3	C	503	RW2	P-O4	-2.28	1.46	1.54
3	D	501	RW2	P-O4	-2.21	1.46	1.54
3	A	502	RW2	P-O4	-2.13	1.47	1.54
3	B	501	RW2	P-O4	-2.12	1.47	1.54
3	B	501	RW2	C9-C10	-2.11	1.50	1.54
3	A	502	RW2	P-O2	-2.10	1.44	1.51
3	D	501	RW2	C9-C10	-2.06	1.50	1.54
3	C	503	RW2	P-O3	-2.05	1.47	1.54
3	A	502	RW2	C8-C12	-2.04	1.31	1.37
3	D	501	RW2	C-C4	4.53	1.47	1.40
3	A	502	RW2	C-C4	4.61	1.47	1.40
3	C	503	RW2	C-C4	5.20	1.48	1.40
3	C	503	RW2	C3-C4	5.30	1.48	1.40
3	B	501	RW2	C-C4	5.43	1.48	1.40
3	D	501	RW2	C3-C4	5.70	1.48	1.40

Continued on next page...

Continued from previous page...

Mol	Chain	Res	Type	Atoms	Z	Observed(Å)	Ideal(Å)
3	B	501	RW2	C3-C4	6.01	1.49	1.40
3	A	502	RW2	C3-C4	6.19	1.49	1.40
3	D	501	RW2	C-C1	10.91	1.48	1.40
3	A	502	RW2	C-C1	12.18	1.49	1.40
3	B	501	RW2	C-C1	12.62	1.49	1.40
3	C	503	RW2	C-C1	13.41	1.50	1.40

All (23) bond angle outliers are listed below:

Mol	Chain	Res	Type	Atoms	Z	Observed(°)	Ideal(°)
3	C	503	RW2	C-C4-C3	-3.87	114.74	118.82
3	D	501	RW2	C9-C8-N1	-3.23	119.03	122.25
3	B	501	RW2	C-C4-C3	-3.02	115.64	118.82
3	B	501	RW2	C9-C10-C13	-2.70	109.49	114.95
3	D	501	RW2	C-C4-C3	-2.62	116.06	118.82
3	A	502	RW2	C-C4-C3	-2.61	116.07	118.82
3	B	501	RW2	C9-C8-N1	-2.52	119.73	122.25
3	C	503	RW2	C9-C8-N1	-2.43	119.83	122.25
3	A	502	RW2	C9-C8-N1	-2.23	120.02	122.25
3	D	501	RW2	O1-C-C1	2.06	121.23	117.66
3	B	501	RW2	C5-C4-C3	2.19	121.66	119.71
3	A	502	RW2	O4-P-O3	2.23	115.86	107.38
3	A	502	RW2	O1-C-C1	2.35	121.75	117.66
3	A	502	RW2	C2-C3-C4	2.38	119.87	118.09
3	A	502	RW2	C2-N-C1	2.50	124.37	119.28
3	C	503	RW2	C12-C8-N1	2.71	128.37	126.45
3	B	501	RW2	O3-P-O2	3.09	120.52	110.58
3	A	502	RW2	C12-C8-N1	3.15	128.69	126.45
3	C	503	RW2	C5-C4-C3	3.49	122.82	119.71
3	B	501	RW2	C12-C8-N1	3.54	128.96	126.45
3	D	501	RW2	C12-C8-N1	3.75	129.11	126.45
3	D	501	RW2	C5-C4-C3	4.31	123.55	119.71
3	A	502	RW2	C5-C4-C3	4.38	123.61	119.71

There are no chirality outliers.

There are no torsion outliers.

There are no ring outliers.

4 monomers are involved in 7 short contacts:

Mol	Chain	Res	Type	Clashes	Symm-Clashes
3	A	502	RW2	2	0

Continued on next page...

Continued from previous page...

Mol	Chain	Res	Type	Clashes	Symm-Clashes
3	B	501	RW2	3	0
4	C	502	GOL	1	0
3	D	501	RW2	1	0

5.7 Other polymers [i](#)

There are no such residues in this entry.

5.8 Polymer linkage issues [i](#)

There are no chain breaks in this entry.

6 Fit of model and data ⓘ

6.1 Protein, DNA and RNA chains ⓘ

In the following table, the column labelled ‘#RSRZ> 2’ contains the number (and percentage) of RSRZ outliers, followed by percent RSRZ outliers for the chain as percentile scores relative to all X-ray entries and entries of similar resolution. The OWAB column contains the minimum, median, 95th percentile and maximum values of the occupancy-weighted average B-factor per residue. The column labelled ‘Q< 0.9’ lists the number of (and percentage) of residues with an average occupancy less than 0.9.

Mol	Chain	Analysed	<RSRZ>	#RSRZ>2	OWAB(Å ²)	Q<0.9
1	A	462/463 (99%)	0.07	11 (2%) 62 61	21, 31, 54, 97	0
1	B	461/463 (99%)	0.15	24 (5%) 31 30	21, 34, 57, 95	0
1	C	462/463 (99%)	-0.06	9 (1%) 70 68	17, 29, 49, 81	0
1	D	461/463 (99%)	-0.12	10 (2%) 65 64	16, 26, 45, 74	0
All	All	1846/1852 (99%)	0.01	54 (2%) 55 54	16, 30, 52, 97	0

All (54) RSRZ outliers are listed below:

Mol	Chain	Res	Type	RSRZ
1	B	439	CYS	6.4
1	A	440	GLY	6.0
1	B	11	PHE	4.6
1	A	158	GLU	4.2
1	B	231	VAL	3.9
1	D	157	GLY	3.8
1	A	439	CYS	3.8
1	B	230	PHE	3.6
1	C	438	GLY	3.3
1	C	157	GLY	3.2
1	C	11	PHE	3.1
1	B	401	PHE	3.0
1	B	193	THR	3.0
1	B	138	CYS	2.9
1	B	300	VAL	2.8
1	C	138	CYS	2.8
1	B	438	GLY	2.8
1	D	231	VAL	2.8
1	B	137	SER	2.8
1	A	353	THR	2.8
1	A	138	CYS	2.7

Continued on next page...

Continued from previous page...

Mol	Chain	Res	Type	RSRZ
1	D	353	THR	2.7
1	D	134	ALA	2.7
1	B	228	GLU	2.7
1	B	135	CYS	2.6
1	B	191	GLY	2.5
1	B	355	LEU	2.4
1	C	136	GLY	2.4
1	C	135	CYS	2.4
1	B	301	GLN	2.4
1	C	439	CYS	2.4
1	B	328	SER	2.3
1	A	137	SER	2.3
1	C	440	GLY	2.3
1	A	157	GLY	2.3
1	B	437	GLY	2.3
1	B	229	GLU	2.2
1	A	300	VAL	2.2
1	B	134	ALA	2.2
1	D	354	TRP	2.2
1	D	135	CYS	2.2
1	C	158	GLU	2.2
1	D	441	ASP	2.1
1	B	335	GLY	2.1
1	A	134	ALA	2.1
1	A	174	ALA	2.1
1	D	439	CYS	2.1
1	B	354	TRP	2.1
1	B	350	ILE	2.1
1	D	355	LEU	2.1
1	B	419	GLU	2.1
1	B	227	LEU	2.0
1	D	334	GLY	2.0
1	A	441	ASP	2.0

6.2 Non-standard residues in protein, DNA, RNA chains ⓘ

There are no non-standard protein/DNA/RNA residues in this entry.

6.3 Carbohydrates ⓘ

There are no carbohydrates in this entry.

6.4 Ligands [i](#)

In the following table, the Atoms column lists the number of modelled atoms in the group and the number defined in the chemical component dictionary. LLDF column lists the quality of electron density of the group with respect to its neighbouring residues in protein, DNA or RNA chains. The B-factors column lists the minimum, median, 95th percentile and maximum values of B factors of atoms in the group. The column labelled 'Q< 0.9' lists the number of atoms with occupancy less than 0.9.

Mol	Type	Chain	Res	Atoms	RSCC	RSR	LLDF	B-factors(Å ²)	Q<0.9
3	RW2	A	502	27/27	0.95	0.30	2.84	23,33,50,53	27
3	RW2	C	503	27/27	0.92	0.28	2.02	17,30,50,52	27
3	RW2	D	501	27/27	0.94	0.23	1.79	22,28,46,53	27
4	GOL	C	502	6/6	0.86	0.14	1.78	51,56,59,60	0
3	RW2	B	501	27/27	0.90	0.30	1.75	28,37,57,62	27
2	FES	C	501	4/4	0.98	0.13	-2.53	19,26,27,30	0
2	FES	A	501	4/4	0.99	0.14	-3.37	25,26,27,29	0

6.5 Other polymers [i](#)

There are no such residues in this entry.