



# Full wwPDB X-ray Structure Validation Report ⓘ

Feb 1, 2016 – 10:31 PM GMT

PDB ID : 4Y67  
Title : Structure of Plasmodium falciparum DXR in complex with a beta-substituted fosmidomycin analogue, RC176, and manganese  
Authors : Sooriyaarachchi, S.; Bergfors, T.; Jones, T.A.; Mowbray, S.L.  
Deposited on : 2015-02-12  
Resolution : 1.60 Å(reported)

This is a Full wwPDB X-ray Structure Validation Report for a publicly released PDB entry.  
We welcome your comments at [validation@mail.wwpdb.org](mailto:validation@mail.wwpdb.org)  
A user guide is available at  
<http://wwpdb.org/validation/2016/XrayValidationReportHelp>  
with specific help available everywhere you see the ⓘ symbol.

---

The following versions of software and data (see [references ⓘ](#)) were used in the production of this report:

MolProbity : 4.02b-467  
Mogul : 1.7 (RC4), CSD as536be (2015)  
Xtriage (Phenix) : 1.9-1692  
EDS : rb-20026688  
Percentile statistics : 20151230.v01 (using entries in the PDB archive December 30th 2015)  
Refmac : 5.8.0135  
CCP4 : 6.5.0  
Ideal geometry (proteins) : Engh & Huber (2001)  
Ideal geometry (DNA, RNA) : Parkinson et al. (1996)  
Validation Pipeline (wwPDB-VP) : trunk26865

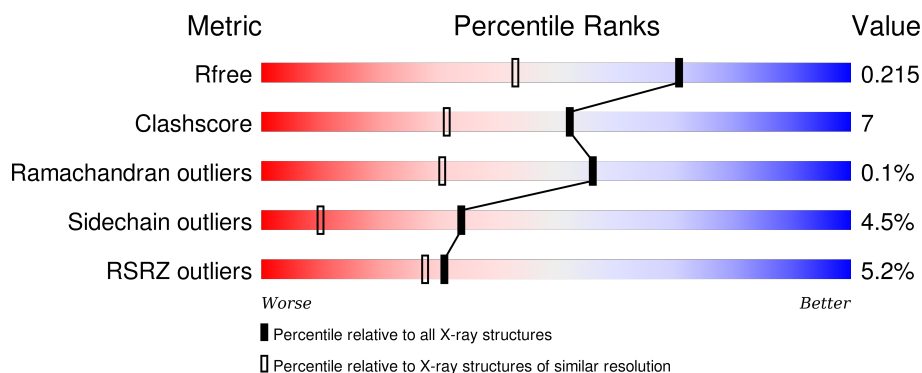
# 1 Overall quality at a glance

The following experimental techniques were used to determine the structure:

## *X-RAY DIFFRACTION*

The reported resolution of this entry is 1.60 Å.

Percentile scores (ranging between 0-100) for global validation metrics of the entry are shown in the following graphic. The table shows the number of entries on which the scores are based.



Metric	Whole archive (#Entries)	Similar resolution (#Entries, resolution range(Å))
$R_{free}$	91344	2475 (1.60-1.60)
Clashscore	102246	2732 (1.60-1.60)
Ramachandran outliers	100387	2654 (1.60-1.60)
Sidechain outliers	100360	2653 (1.60-1.60)
RSRZ outliers	91569	2479 (1.60-1.60)

The table below summarises the geometric issues observed across the polymeric chains and their fit to the electron density. The red, orange, yellow and green segments on the lower bar indicate the fraction of residues that contain outliers for  $\geq 3$ , 2, 1 and 0 types of geometric quality criteria. A grey segment represents the fraction of residues that are not modelled. The numeric value for each fraction is indicated below the corresponding segment, with a dot representing fractions  $\leq 5\%$ . The upper red bar (where present) indicates the fraction of residues that have poor fit to the electron density. The numeric value is given above the bar.

Mol	Chain	Length	Quality of chain
1	A	422	<div> <div>5%</div> <div> <div></div> <div>83%</div> <div>13%</div> <div>• •</div> </div> </div>
1	B	422	<div> <div>5%</div> <div> <div></div> <div>87%</div> <div>9%</div> <div>• •</div> </div> </div>

## 2 Entry composition

There are 4 unique types of molecules in this entry. The entry contains 7396 atoms, of which 0 are hydrogens and 0 are deuteriums.

In the tables below, the ZeroOcc column contains the number of atoms modelled with zero occupancy, the AltConf column contains the number of residues with at least one atom in alternate conformation and the Trace column contains the number of residues modelled with at most 2 atoms.

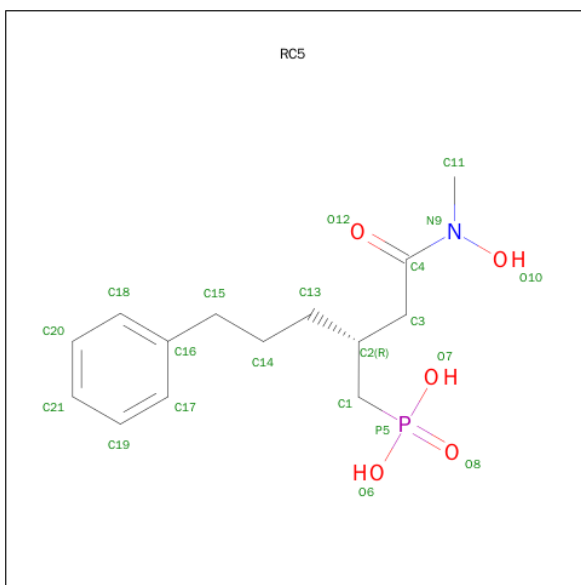
- Molecule 1 is a protein called 1-deoxy-D-xylulose 5-phosphate reductoisomerase, apicoplast.

Mol	Chain	Residues	Atoms					ZeroOcc	AltConf	Trace
1	A	410	Total	C	N	O	S	0	8	0
			3323	2129	543	630	21			
1	B	410	Total	C	N	O	S	0	7	0
			3315	2125	542	628	20			

There are 16 discrepancies between the modelled and reference sequences:

Chain	Residue	Modelled	Actual	Comment	Reference
A	67	MET	-	initiating methionine	UNP Q8IKG4
A	68	ALA	-	expression tag	UNP Q8IKG4
A	69	HIS	-	expression tag	UNP Q8IKG4
A	70	HIS	-	expression tag	UNP Q8IKG4
A	71	HIS	-	expression tag	UNP Q8IKG4
A	72	HIS	-	expression tag	UNP Q8IKG4
A	73	HIS	-	expression tag	UNP Q8IKG4
A	74	HIS	-	expression tag	UNP Q8IKG4
B	67	MET	-	initiating methionine	UNP Q8IKG4
B	68	ALA	-	expression tag	UNP Q8IKG4
B	69	HIS	-	expression tag	UNP Q8IKG4
B	70	HIS	-	expression tag	UNP Q8IKG4
B	71	HIS	-	expression tag	UNP Q8IKG4
B	72	HIS	-	expression tag	UNP Q8IKG4
B	73	HIS	-	expression tag	UNP Q8IKG4
B	74	HIS	-	expression tag	UNP Q8IKG4

- Molecule 2 is [(2R)-2-{2-[hydroxy(methyl)amino]-2-oxoethyl}-5-phenylpentyl]phosphonic acid (three-letter code: RC5) (formula: C<sub>14</sub>H<sub>22</sub>NO<sub>5</sub>P).



Mol	Chain	Residues	Atoms					ZeroOcc	AltConf
2	A	1	Total	C	N	O	P	0	0
			21	14	1	5	1		
2	B	1	Total	C	N	O	P	0	0
			21	14	1	5	1		

- Molecule 3 is MANGANESE (II) ION (three-letter code: MN) (formula: Mn).

Mol	Chain	Residues	Atoms		ZeroOcc	AltConf
3	B	1	Total	Mn	0	0
			1	1		
3	A	1	Total	Mn	0	0
			1	1		

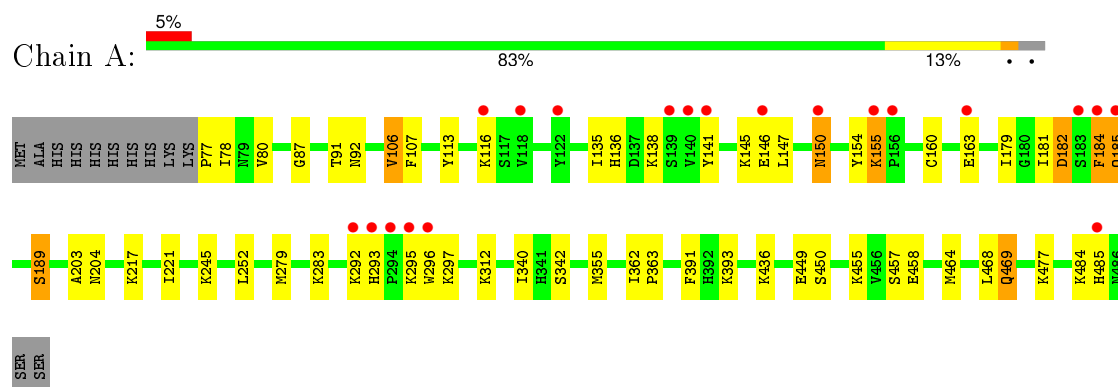
- Molecule 4 is water.

Mol	Chain	Residues	Atoms		ZeroOcc	AltConf
4	A	373	Total	O	0	0
			373	373		
4	B	341	Total	O	0	0
			341	341		

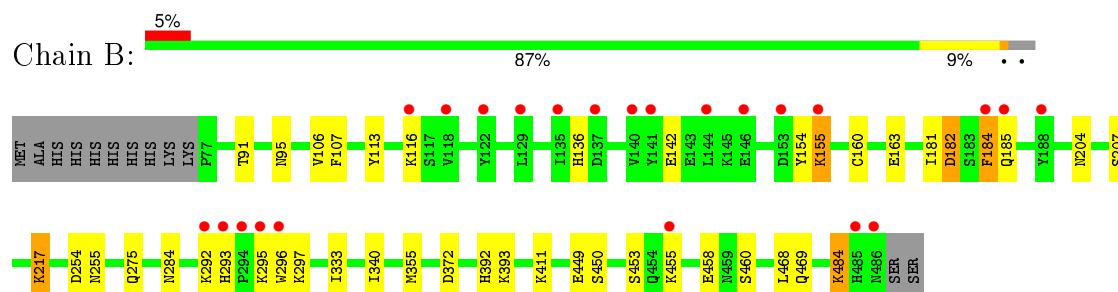
### 3 Residue-property plots [i](#)

These plots are drawn for all protein, RNA and DNA chains in the entry. The first graphic for a chain summarises the proportions of errors displayed in the second graphic. The second graphic shows the sequence view annotated by issues in geometry and electron density. Residues are color-coded according to the number of geometric quality criteria for which they contain at least one outlier: green = 0, yellow = 1, orange = 2 and red = 3 or more. A red dot above a residue indicates a poor fit to the electron density ( $RSRZ > 2$ ). Stretches of 2 or more consecutive residues without any outlier are shown as a green connector. Residues present in the sample, but not in the model, are shown in grey.

- Molecule 1: 1-deoxy-D-xylulose 5-phosphate reductoisomerase, apicoplast



- Molecule 1: 1-deoxy-D-xylulose 5-phosphate reductoisomerase, apicoplast



## 4 Data and refinement statistics

Property	Value	Source
Space group	P 1	Depositor
Cell constants a, b, c, $\alpha$ , $\beta$ , $\gamma$	51.57Å 56.47Å 86.02Å 104.11° 103.25° 100.16°	Depositor
Resolution (Å)	48.65 – 1.60 48.65 – 1.60	Depositor EDS
% Data completeness (in resolution range)	94.2 (48.65-1.60) 84.7 (48.65-1.60)	Depositor EDS
$R_{merge}$	0.08	Depositor
$R_{sym}$	(Not available)	Depositor
$\langle I/\sigma(I) \rangle$ <sup>1</sup>	2.18 (at 1.60Å)	Xtriage
Refinement program	REFMAC 5.8.0073	Depositor
R, $R_{free}$	0.177 , 0.206 0.186 , 0.215	Depositor DCC
$R_{free}$ test set	5532 reflections (5.28%)	DCC
Wilson B-factor (Å <sup>2</sup> )	16.9	Xtriage
Anisotropy	0.553	Xtriage
Bulk solvent $k_{sol}$ (e/Å <sup>3</sup> ), $B_{sol}$ (Å <sup>2</sup> )	0.34 , 43.1	EDS
Estimated twinning fraction	0.009 for -h,-k,h+k+l	Xtriage
L-test for twinning <sup>2</sup>	$\langle  L  \rangle = 0.49$ , $\langle L^2 \rangle = 0.32$	Xtriage
Outliers	0 of 110386 reflections	Xtriage
$F_o, F_c$ correlation	0.96	EDS
Total number of atoms	7396	wwPDB-VP
Average B, all atoms (Å <sup>2</sup> )	23.0	wwPDB-VP

Xtriage's analysis on translational NCS is as follows: *The largest off-origin peak in the Patterson function is 5.92% of the height of the origin peak. No significant pseudotranslation is detected.*

<sup>1</sup>Intensities estimated from amplitudes.

<sup>2</sup>Theoretical values of  $\langle |L| \rangle$ ,  $\langle L^2 \rangle$  for acentric reflections are 0.5, 0.375 respectively for untwinned datasets, and 0.333, 0.2 for perfectly twinned datasets.

## 5 Model quality [i](#)

### 5.1 Standard geometry [i](#)

Bond lengths and bond angles in the following residue types are not validated in this section: RC5, MN

The Z score for a bond length (or angle) is the number of standard deviations the observed value is removed from the expected value. A bond length (or angle) with  $|Z| > 5$  is considered an outlier worth inspection. RMSZ is the root-mean-square of all Z scores of the bond lengths (or angles).

Mol	Chain	Bond lengths		Bond angles	
		RMSZ	$\# Z  > 5$	RMSZ	$\# Z  > 5$
1	A	0.56	0/3392	0.68	1/4581 (0.0%)
1	B	0.56	0/3390	0.66	0/4579
All	All	0.56	0/6782	0.67	1/9160 (0.0%)

There are no bond length outliers.

All (1) bond angle outliers are listed below:

Mol	Chain	Res	Type	Atoms	Z	Observed(°)	Ideal(°)
1	A	464	MET	CG-SD-CE	-5.38	91.59	100.20

There are no chirality outliers.

There are no planarity outliers.

### 5.2 Too-close contacts [i](#)

In the following table, the Non-H and H(model) columns list the number of non-hydrogen atoms and hydrogen atoms in the chain respectively. The H(added) column lists the number of hydrogen atoms added and optimized by MolProbity. The Clashes column lists the number of clashes within the asymmetric unit, whereas Symm-Clashes lists symmetry related clashes.

Mol	Chain	Non-H	H(model)	H(added)	Clashes	Symm-Clashes
1	A	3323	0	3358	52	0
1	B	3315	0	3356	38	0
2	A	21	0	19	1	0
2	B	21	0	19	0	0
3	A	1	0	0	0	0
3	B	1	0	0	0	0
4	A	373	0	0	22	2
4	B	341	0	0	20	1

*Continued on next page...*

*Continued from previous page...*

Mol	Chain	Non-H	H(model)	H(added)	Clashes	Symm-Clashes
All	All	7396	0	6752	90	2

The all-atom clashscore is defined as the number of clashes found per 1000 atoms (including hydrogen atoms). The all-atom clashscore for this structure is 7.

All (90) close contacts within the same asymmetric unit are listed below, sorted by their clash magnitude.

Atom-1	Atom-2	Interatomic distance (Å)	Clash overlap (Å)
1:B:284:ASN:OD1	4:B:601:HOH:O	1.65	1.15
1:A:77:PRO:N	4:A:891:HOH:O	1.83	1.10
1:A:221:ILE:HD12	4:A:913:HOH:O	1.60	0.98
1:B:217:LYS:HE2	1:B:458:GLU:O	1.63	0.98
1:A:217:LYS:HE2	1:A:458:GLU:O	1.74	0.87
1:B:484:LYS:NZ	4:B:602:HOH:O	2.07	0.83
1:A:469:GLN:NE2	4:A:906:HOH:O	2.11	0.83
1:A:393:LYS:HE3	4:B:813:HOH:O	1.79	0.82
1:A:92:ASN:OD1	4:A:951:HOH:O	1.98	0.81
1:A:449:GLU:HG2	4:A:660:HOH:O	1.80	0.81
1:A:163:GLU:HB3	4:A:970:HOH:O	1.83	0.77
1:A:221:ILE:CD1	4:A:913:HOH:O	2.24	0.77
1:B:113:TYR:OH	1:B:185:GLN:NE2	2.20	0.74
1:A:179:ILE:O	4:A:956:HOH:O	2.06	0.73
1:B:184:PHE:HE1	1:B:468:LEU:HD22	1.55	0.71
1:B:182:ASP:HA	1:B:204:ASN:ND2	2.06	0.70
1:B:296:TRP:HZ2	4:B:783:HOH:O	1.74	0.70
1:A:163:GLU:CB	4:A:970:HOH:O	2.38	0.69
1:B:392:HIS:NE2	4:B:858:HOH:O	2.26	0.68
1:B:95[B]:ASN:ND2	4:B:850:HOH:O	2.25	0.68
4:A:950:HOH:O	1:B:393:LYS:HE3	1.92	0.68
1:B:106:VAL:HG12	1:B:107:PHE:CD2	2.28	0.67
1:B:449:GLU:OE1	4:B:922:HOH:O	2.11	0.66
1:A:184:PHE:HE1	1:A:468:LEU:CD2	2.08	0.66
1:B:449:GLU:HG2	4:B:665:HOH:O	1.94	0.66
1:B:184:PHE:HE1	1:B:468:LEU:CD2	2.09	0.65
1:A:393:LYS:CE	4:B:813:HOH:O	2.43	0.63
1:B:184:PHE:CE1	1:B:468:LEU:HD22	2.33	0.62
1:B:142:GLU:OE1	4:B:603:HOH:O	2.16	0.61
1:B:91[A]:THR:CG2	4:B:932:HOH:O	2.50	0.60
1:A:295:LYS:HD3	1:A:296:TRP:N	2.16	0.60
1:B:392:HIS:CD2	4:B:858:HOH:O	2.54	0.59
1:B:295:LYS:HD3	1:B:296:TRP:N	2.18	0.58

*Continued on next page...*

*Continued from previous page...*

Atom-1	Atom-2	Interatomic distance (Å)	Clash overlap (Å)
1:B:91[A]:THR:HG21	4:B:932:HOH:O	2.04	0.57
1:A:295:LYS:CD	1:A:296:TRP:N	2.68	0.57
1:A:203:ALA:HB3	4:A:956:HOH:O	2.03	0.56
1:B:450:SER:C	4:B:604:HOH:O	2.44	0.56
1:A:457[B]:SER:OG	4:A:876:HOH:O	2.18	0.56
1:A:182:ASP:OD1	1:A:182:ASP:N	2.38	0.54
1:B:392:HIS:HD2	4:B:918:HOH:O	1.91	0.54
1:A:182:ASP:HB3	4:A:949:HOH:O	2.07	0.54
1:A:184:PHE:HE1	1:A:468:LEU:HD22	1.71	0.54
1:A:154:TYR:C	1:A:155:LYS:HG2	2.27	0.54
1:B:295:LYS:CD	1:B:296:TRP:N	2.71	0.54
1:A:184:PHE:HE1	1:A:468:LEU:HD21	1.72	0.53
1:B:217:LYS:NZ	4:B:827:HOH:O	2.36	0.52
1:A:182:ASP:HA	1:A:204:ASN:ND2	2.26	0.51
1:B:411:LYS:NZ	4:B:607:HOH:O	2.44	0.51
1:A:436:LYS:HD2	4:A:649:HOH:O	2.11	0.51
1:A:147:LEU:O	1:A:150:ASN:HB2	2.11	0.50
1:A:184:PHE:CE1	1:A:468:LEU:HD22	2.47	0.49
1:A:362:ILE:HG23	4:A:772:HOH:O	2.10	0.49
1:A:362:ILE:HB	1:A:363:PRO:HD3	1.95	0.48
1:A:106:VAL:HG12	1:A:107:PHE:CD2	2.49	0.48
1:B:184:PHE:CE1	1:B:468:LEU:CD2	2.94	0.48
1:A:113:TYR:OH	1:A:185:GLN:NE2	2.47	0.47
1:A:296:TRP:HZ2	4:A:855:HOH:O	1.97	0.47
1:B:295:LYS:HD3	1:B:295:LYS:C	2.35	0.46
1:A:295:LYS:C	1:A:295:LYS:HD3	2.36	0.46
1:A:141:TYR:CE2	1:A:145:LYS:HE2	2.49	0.46
1:B:275:GLN:HG2	4:B:838:HOH:O	2.16	0.46
1:A:185:GLN:O	1:A:189[A]:SER:OG	2.35	0.45
1:A:135:ILE:O	1:A:160[B]:CYS:HA	2.16	0.45
1:A:163:GLU:HB2	4:A:970:HOH:O	2.11	0.45
1:A:245:LYS:NZ	1:B:372[A]:ASP:OD1	2.46	0.45
1:B:275:GLN:OE1	1:B:392:HIS:HE1	2.00	0.44
1:A:77:PRO:CA	4:A:891:HOH:O	2.52	0.44
1:A:485:HIS:HE1	4:A:664:HOH:O	1.98	0.44
1:A:181:ILE:HG21	1:A:185:GLN:HB3	1.99	0.44
1:A:204:ASN:N	4:A:956:HOH:O	2.50	0.44
1:A:136:HIS:CD2	1:A:185:GLN:HE22	2.36	0.44
4:A:950:HOH:O	1:B:393:LYS:CE	2.57	0.43
1:A:340:ILE:HG12	1:A:355:MET:CG	2.47	0.43
1:A:87:GLY:O	1:A:91:THR:HG23	2.18	0.43

*Continued on next page...*

Continued from previous page...

Atom-1	Atom-2	Interatomic distance (Å)	Clash overlap (Å)
1:B:181:ILE:HG21	1:B:185:GLN:HB3	2.01	0.43
1:A:135:ILE:O	1:A:160[A]:CYS:HA	2.18	0.43
1:B:340:ILE:HG12	1:B:355:MET:CG	2.48	0.43
1:B:154:TYR:C	1:B:155:LYS:HG2	2.39	0.42
1:B:136:HIS:CD2	1:B:185:GLN:HE22	2.37	0.42
1:A:138:LYS:HD2	1:A:160[A]:CYS:SG	2.59	0.42
1:B:254:ASP:O	1:B:255:ASN:HB2	2.18	0.42
2:A:501:RC5:H12	2:A:501:RC5:H3	2.01	0.42
1:A:340:ILE:HD12	1:A:391:PHE:HZ	1.85	0.41
1:A:450:SER:CB	1:A:477:LYS:HE2	2.50	0.41
1:A:279:MET:O	1:A:283:LYS:HG3	2.20	0.41
1:A:203:ALA:N	4:A:956:HOH:O	2.42	0.41
1:B:392:HIS:CD2	4:B:918:HOH:O	2.71	0.41
1:B:450:SER:O	4:B:604:HOH:O	2.21	0.41
1:A:141:TYR:CZ	1:A:145:LYS:HE2	2.57	0.40
1:A:78:ILE:HG22	1:A:80[A]:VAL:HG22	2.03	0.40

All (2) symmetry-related close contacts are listed below. The label for Atom-2 includes the symmetry operator and encoded unit-cell translations to be applied.

Atom-1	Atom-2	Interatomic distance (Å)	Clash overlap (Å)
4:A:602:HOH:O	4:B:666:HOH:O[1_666]	2.11	0.09
4:A:611:HOH:O	4:A:681:HOH:O[1_655]	2.18	0.02

## 5.3 Torsion angles ⓘ

### 5.3.1 Protein backbone ⓘ

In the following table, the Percentiles column shows the percent Ramachandran outliers of the chain as a percentile score with respect to all X-ray entries followed by that with respect to entries of similar resolution.

The Analysed column shows the number of residues for which the backbone conformation was analysed, and the total number of residues.

Mol	Chain	Analysed	Favoured	Allowed	Outliers	Percentiles	
1	A	416/422 (99%)	402 (97%)	13 (3%)	1 (0%)	52	28
1	B	415/422 (98%)	401 (97%)	14 (3%)	0	100	100
All	All	831/844 (98%)	803 (97%)	27 (3%)	1 (0%)	56	31

All (1) Ramachandran outliers are listed below:

Mol	Chain	Res	Type
1	A	342	SER

### 5.3.2 Protein sidechains ⓘ

In the following table, the Percentiles column shows the percent sidechain outliers of the chain as a percentile score with respect to all X-ray entries followed by that with respect to entries of similar resolution.

The Analysed column shows the number of residues for which the sidechain conformation was analysed, and the total number of residues.

Mol	Chain	Analysed	Rotameric	Outliers	Percentiles	
1	A	385/388 (99%)	367 (95%)	18 (5%)	32	9
1	B	384/388 (99%)	366 (95%)	18 (5%)	32	9
All	All	769/776 (99%)	733 (95%)	36 (5%)	34	9

All (36) residues with a non-rotameric sidechain are listed below:

Mol	Chain	Res	Type
1	A	106	VAL
1	A	116	LYS
1	A	146	GLU
1	A	150	ASN
1	A	155	LYS
1	A	182	ASP
1	A	184	PHE
1	A	185	GLN
1	A	189[A]	SER
1	A	189[B]	SER
1	A	252	LEU
1	A	292	LYS
1	A	293	HIS
1	A	297	LYS
1	A	312	LYS
1	A	455	LYS
1	A	469	GLN
1	A	484	LYS
1	B	116	LYS
1	B	155	LYS
1	B	160	CYS
1	B	163	GLU

*Continued on next page...*

*Continued from previous page...*

Mol	Chain	Res	Type
1	B	182	ASP
1	B	184	PHE
1	B	207[A]	SER
1	B	207[B]	SER
1	B	217	LYS
1	B	292	LYS
1	B	293	HIS
1	B	297	LYS
1	B	333	ILE
1	B	453	SER
1	B	455	LYS
1	B	460	SER
1	B	469	GLN
1	B	484	LYS

Some sidechains can be flipped to improve hydrogen bonding and reduce clashes. All (8) such sidechains are listed below:

Mol	Chain	Res	Type
1	A	105	ASN
1	A	185	GLN
1	A	433	ASN
1	A	469	GLN
1	B	105	ASN
1	B	136	HIS
1	B	150	ASN
1	B	185	GLN

### 5.3.3 RNA ⓘ

There are no RNA molecules in this entry.

## 5.4 Non-standard residues in protein, DNA, RNA chains ⓘ

There are no non-standard protein/DNA/RNA residues in this entry.

## 5.5 Carbohydrates ⓘ

There are no carbohydrates in this entry.

## 5.6 Ligand geometry

Of 4 ligands modelled in this entry, 2 are monoatomic - leaving 2 for Mogul analysis.

In the following table, the Counts columns list the number of bonds (or angles) for which Mogul statistics could be retrieved, the number of bonds (or angles) that are observed in the model and the number of bonds (or angles) that are defined in the chemical component dictionary. The Link column lists molecule types, if any, to which the group is linked. The Z score for a bond length (or angle) is the number of standard deviations the observed value is removed from the expected value. A bond length (or angle) with  $|Z| > 2$  is considered an outlier worth inspection. RMSZ is the root-mean-square of all Z scores of the bond lengths (or angles).

Mol	Type	Chain	Res	Link	Bond lengths			Bond angles		
					Counts	RMSZ	# Z  > 2	Counts	RMSZ	# Z  > 2
2	RC5	A	501	3	20,21,21	1.18	1 (5%)	22,28,28	1.29	3 (13%)
2	RC5	B	501	3	20,21,21	1.34	2 (10%)	22,28,28	1.27	3 (13%)

In the following table, the Chirals column lists the number of chiral outliers, the number of chiral centers analysed, the number of these observed in the model and the number defined in the chemical component dictionary. Similar counts are reported in the Torsion and Rings columns. '-' means no outliers of that kind were identified.

Mol	Type	Chain	Res	Link	Chirals	Torsions	Rings
2	RC5	A	501	3	-	0/18/19/19	0/1/1/1
2	RC5	B	501	3	-	0/18/19/19	0/1/1/1

All (3) bond length outliers are listed below:

Mol	Chain	Res	Type	Atoms	Z	Observed(Å)	Ideal(Å)
2	B	501	RC5	P5-O6	-2.82	1.48	1.54
2	A	501	RC5	P5-C1	3.78	1.83	1.79
2	B	501	RC5	P5-C1	4.52	1.83	1.79

All (6) bond angle outliers are listed below:

Mol	Chain	Res	Type	Atoms	Z	Observed(°)	Ideal(°)
2	B	501	RC5	O12-C4-C3	-3.10	116.25	122.22
2	A	501	RC5	O12-C4-C3	-3.00	116.44	122.22
2	A	501	RC5	O6-P5-O8	-2.57	105.82	112.40
2	B	501	RC5	O6-P5-C1	2.16	112.12	106.84
2	A	501	RC5	C3-C4-N9	3.66	122.45	117.71
2	B	501	RC5	C3-C4-N9	4.01	122.90	117.71

There are no chirality outliers.

There are no torsion outliers.

There are no ring outliers.

1 monomer is involved in 1 short contact:

Mol	Chain	Res	Type	Clashes	Symm-Clashes
2	A	501	RC5	1	0

## 5.7 Other polymers [i](#)

There are no such residues in this entry.

## 5.8 Polymer linkage issues [i](#)

There are no chain breaks in this entry.

## 6 Fit of model and data ⓘ

### 6.1 Protein, DNA and RNA chains ⓘ

In the following table, the column labelled ‘#RSRZ> 2’ contains the number (and percentage) of RSRZ outliers, followed by percent RSRZ outliers for the chain as percentile scores relative to all X-ray entries and entries of similar resolution. The OWAB column contains the minimum, median, 95<sup>th</sup> percentile and maximum values of the occupancy-weighted average B-factor per residue. The column labelled ‘Q< 0.9’ lists the number of (and percentage) of residues with an average occupancy less than 0.9.

Mol	Chain	Analysed	<RSRZ>	#RSRZ>2	OWAB(Å <sup>2</sup> )	Q<0.9
1	A	410/422 (97%)	0.15	20 (4%) 33 30	9, 18, 46, 91	0
1	B	410/422 (97%)	0.15	23 (5%) 28 25	10, 19, 46, 73	1 (0%)
All	All	820/844 (97%)	0.15	43 (5%) 31 28	9, 18, 47, 91	1 (0%)

All (43) RSRZ outliers are listed below:

Mol	Chain	Res	Type	RSRZ
1	A	184	PHE	14.3
1	B	184	PHE	10.8
1	A	293	HIS	10.7
1	B	293	HIS	6.4
1	A	294	PRO	5.4
1	B	294	PRO	4.4
1	A	146	GLU	4.3
1	A	150	ASN	4.3
1	B	140	VAL	4.2
1	A	185	GLN	4.0
1	B	296	TRP	3.9
1	B	144	LEU	3.6
1	B	155	LYS	3.6
1	A	296	TRP	3.3
1	A	140	VAL	3.3
1	A	295	LYS	3.2
1	B	153	ASP	3.2
1	A	485	HIS	3.2
1	B	118	VAL	3.2
1	B	295	LYS	3.1
1	B	485	HIS	2.9
1	B	137	ASP	2.9
1	A	155	LYS	2.8
1	A	116	LYS	2.8

*Continued on next page...*

*Continued from previous page...*

Mol	Chain	Res	Type	RSRZ
1	A	122	TYR	2.7
1	B	185	GLN	2.6
1	A	139	SER	2.6
1	B	188	TYR	2.6
1	B	292	LYS	2.6
1	A	183	SER	2.5
1	B	122	TYR	2.5
1	B	141	TYR	2.4
1	B	146	GLU	2.4
1	B	116	LYS	2.4
1	B	135	ILE	2.4
1	B	129	LEU	2.3
1	A	292	LYS	2.2
1	A	118	VAL	2.2
1	B	486	ASN	2.2
1	A	163	GLU	2.1
1	A	156	PRO	2.1
1	A	141	TYR	2.1
1	B	455	LYS	2.0

## 6.2 Non-standard residues in protein, DNA, RNA chains [i](#)

There are no non-standard protein/DNA/RNA residues in this entry.

## 6.3 Carbohydrates [i](#)

There are no carbohydrates in this entry.

## 6.4 Ligands [i](#)

In the following table, the Atoms column lists the number of modelled atoms in the group and the number defined in the chemical component dictionary. LLDF column lists the quality of electron density of the group with respect to its neighbouring residues in protein, DNA or RNA chains. The B-factors column lists the minimum, median, 95<sup>th</sup> percentile and maximum values of B factors of atoms in the group. The column labelled 'Q< 0.9' lists the number of atoms with occupancy less than 0.9.

Mol	Type	Chain	Res	Atoms	RSCC	RSR	LLDF	B-factors(Å <sup>2</sup> )	Q<0.9
2	RC5	B	501	21/21	0.97	0.07	-0.51	11,16,17,18	0
2	RC5	A	501	21/21	0.97	0.07	-0.56	12,17,19,19	0

*Continued on next page...*

*Continued from previous page...*

Mol	Type	Chain	Res	Atoms	RSCC	RSR	LLDF	B-factors( $\text{\AA}^2$ )	Q<0.9
3	MN	B	502	1/1	1.00	0.07	-1.59	11,11,11,11	0
3	MN	A	502	1/1	1.00	0.07	-3.15	11,11,11,11	0

## 6.5 Other polymers [i](#)

There are no such residues in this entry.