



wwPDB X-ray Structure Validation Summary Report ⓘ

Feb 1, 2016 – 06:46 AM GMT

PDB ID : 2YA7
Title : CRYSTAL STRUCTURE OF STREPTOCOCCUS PNEUMONIAE NANA (TIGR4) IN COMPLEX WITH ZANAMIVIR
Authors : Gut, H.; Xu, G.; Taylor, G.L.; Walsh, M.A.
Deposited on : 2011-02-18
Resolution : 1.89 Å(reported)

This is a wwPDB X-ray Structure Validation Summary Report for a publicly released PDB entry.
We welcome your comments at validation@mail.wwpdb.org
A user guide is available at
<http://wwpdb.org/validation/2016/XrayValidationReportHelp>
with specific help available everywhere you see the ⓘ symbol.

The following versions of software and data (see [references ⓘ](#)) were used in the production of this report:

MolProbity : 4.02b-467
Mogul : 1.7 (RC4), CSD as536be (2015)
Xtriage (Phenix) : 1.9-1692
EDS : rb-20026688
Percentile statistics : 20151230.v01 (using entries in the PDB archive December 30th 2015)
Refmac : 5.8.0135
CCP4 : 6.5.0
Ideal geometry (proteins) : Engh & Huber (2001)
Ideal geometry (DNA, RNA) : Parkinson et al. (1996)
Validation Pipeline (wwPDB-VP) : trunk26865

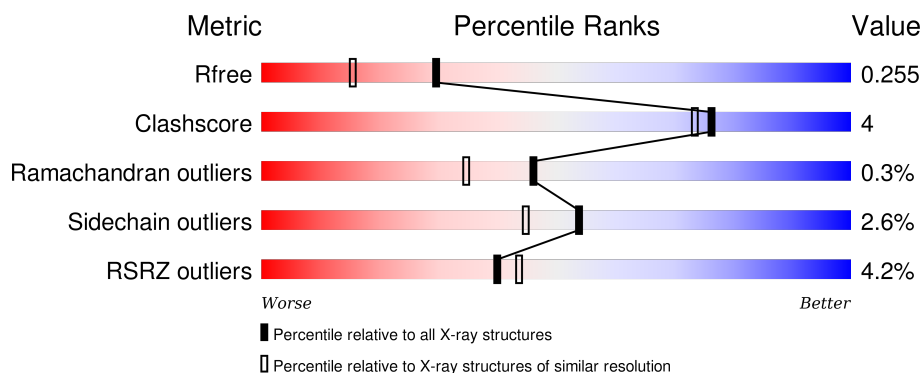
1 Overall quality at a glance ⓘ

The following experimental techniques were used to determine the structure:

X-RAY DIFFRACTION

The reported resolution of this entry is 1.89 Å.

Percentile scores (ranging between 0-100) for global validation metrics of the entry are shown in the following graphic. The table shows the number of entries on which the scores are based.



Metric	Whole archive (#Entries)	Similar resolution (#Entries, resolution range(Å))
R_{free}	91344	4755 (1.90-1.90)
Clashscore	102246	5398 (1.90-1.90)
Ramachandran outliers	100387	5338 (1.90-1.90)
Sidechain outliers	100360	5339 (1.90-1.90)
RSRZ outliers	91569	4766 (1.90-1.90)

The table below summarises the geometric issues observed across the polymeric chains and their fit to the electron density. The red, orange, yellow and green segments on the lower bar indicate the fraction of residues that contain outliers for ≥ 3 , 2, 1 and 0 types of geometric quality criteria. A grey segment represents the fraction of residues that are not modelled. The numeric value for each fraction is indicated below the corresponding segment, with a dot representing fractions $\leq 5\%$. The upper red bar (where present) indicates the fraction of residues that have poor fit to the electron density. The numeric value is given above the bar.

Mol	Chain	Length	Quality of chain
1	A	493	<div> <div>3%</div> <div>87% 8% • 5%</div> </div>
1	B	493	<div> <div>6%</div> <div>83% 11% • 5%</div> </div>
1	C	493	<div> <div>2%</div> <div>86% 8% • 5%</div> </div>
1	D	493	<div> <div>5%</div> <div>83% 12% • 5%</div> </div>

2 Entry composition

There are 4 unique types of molecules in this entry. The entry contains 16385 atoms, of which 0 are hydrogens and 0 are deuteriums.

In the tables below, the ZeroOcc column contains the number of atoms modelled with zero occupancy, the AltConf column contains the number of residues with at least one atom in alternate conformation and the Trace column contains the number of residues modelled with at most 2 atoms.

- Molecule 1 is a protein called NEURAMINIDASE A.

Mol	Chain	Residues	Atoms					ZeroOcc	AltConf	Trace
1	A	469	Total	C	N	O	S	0	4	0
			3744	2341	659	732	12			
1	B	468	Total	C	N	O	S	0	3	0
			3728	2333	658	725	12			
1	C	470	Total	C	N	O	S	0	5	0
			3762	2352	664	734	12			
1	D	470	Total	C	N	O	S	0	5	0
			3758	2350	663	733	12			

There are 80 discrepancies between the modelled and reference sequences:

Chain	Residue	Modelled	Actual	Comment	Reference
A	285	ALA	-	EXPRESSION TAG	UNP B2DJD9
A	286	HIS	-	EXPRESSION TAG	UNP B2DJD9
A	287	HIS	-	EXPRESSION TAG	UNP B2DJD9
A	288	HIS	-	EXPRESSION TAG	UNP B2DJD9
A	289	HIS	-	EXPRESSION TAG	UNP B2DJD9
A	290	HIS	-	EXPRESSION TAG	UNP B2DJD9
A	291	HIS	-	EXPRESSION TAG	UNP B2DJD9
A	292	SER	-	EXPRESSION TAG	UNP B2DJD9
A	293	SER	-	EXPRESSION TAG	UNP B2DJD9
A	294	GLY	-	EXPRESSION TAG	UNP B2DJD9
A	295	LEU	-	EXPRESSION TAG	UNP B2DJD9
A	296	GLU	-	EXPRESSION TAG	UNP B2DJD9
A	297	VAL	-	EXPRESSION TAG	UNP B2DJD9
A	298	LEU	-	EXPRESSION TAG	UNP B2DJD9
A	299	PHE	-	EXPRESSION TAG	UNP B2DJD9
A	300	GLN	-	EXPRESSION TAG	UNP B2DJD9
A	301	GLY	-	EXPRESSION TAG	UNP B2DJD9
A	302	PRO	-	EXPRESSION TAG	UNP B2DJD9
A	440	LYS	GLU	SEE REMARK 999	UNP B2DJD9
A	584	ASP	ASN	SEE REMARK 999	UNP B2DJD9
B	285	ALA	-	EXPRESSION TAG	UNP B2DJD9

Continued on next page...

Continued from previous page...

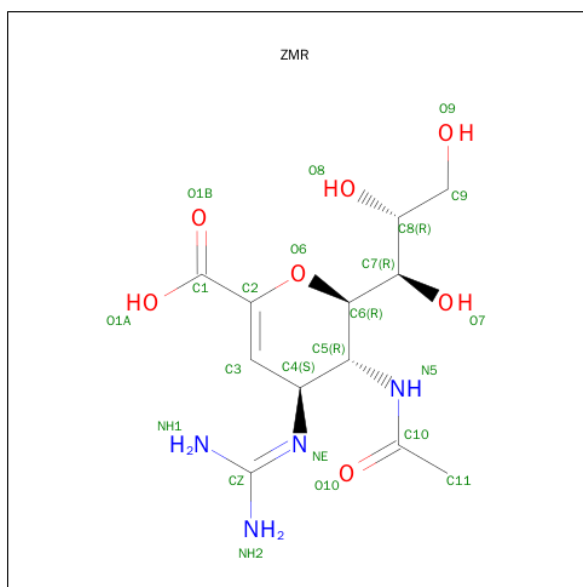
Chain	Residue	Modelled	Actual	Comment	Reference
B	286	HIS	-	EXPRESSION TAG	UNP B2DJD9
B	287	HIS	-	EXPRESSION TAG	UNP B2DJD9
B	288	HIS	-	EXPRESSION TAG	UNP B2DJD9
B	289	HIS	-	EXPRESSION TAG	UNP B2DJD9
B	290	HIS	-	EXPRESSION TAG	UNP B2DJD9
B	291	HIS	-	EXPRESSION TAG	UNP B2DJD9
B	292	SER	-	EXPRESSION TAG	UNP B2DJD9
B	293	SER	-	EXPRESSION TAG	UNP B2DJD9
B	294	GLY	-	EXPRESSION TAG	UNP B2DJD9
B	295	LEU	-	EXPRESSION TAG	UNP B2DJD9
B	296	GLU	-	EXPRESSION TAG	UNP B2DJD9
B	297	VAL	-	EXPRESSION TAG	UNP B2DJD9
B	298	LEU	-	EXPRESSION TAG	UNP B2DJD9
B	299	PHE	-	EXPRESSION TAG	UNP B2DJD9
B	300	GLN	-	EXPRESSION TAG	UNP B2DJD9
B	301	GLY	-	EXPRESSION TAG	UNP B2DJD9
B	302	PRO	-	EXPRESSION TAG	UNP B2DJD9
B	440	LYS	GLU	SEE REMARK 999	UNP B2DJD9
B	584	ASP	ASN	SEE REMARK 999	UNP B2DJD9
C	285	ALA	-	EXPRESSION TAG	UNP B2DJD9
C	286	HIS	-	EXPRESSION TAG	UNP B2DJD9
C	287	HIS	-	EXPRESSION TAG	UNP B2DJD9
C	288	HIS	-	EXPRESSION TAG	UNP B2DJD9
C	289	HIS	-	EXPRESSION TAG	UNP B2DJD9
C	290	HIS	-	EXPRESSION TAG	UNP B2DJD9
C	291	HIS	-	EXPRESSION TAG	UNP B2DJD9
C	292	SER	-	EXPRESSION TAG	UNP B2DJD9
C	293	SER	-	EXPRESSION TAG	UNP B2DJD9
C	294	GLY	-	EXPRESSION TAG	UNP B2DJD9
C	295	LEU	-	EXPRESSION TAG	UNP B2DJD9
C	296	GLU	-	EXPRESSION TAG	UNP B2DJD9
C	297	VAL	-	EXPRESSION TAG	UNP B2DJD9
C	298	LEU	-	EXPRESSION TAG	UNP B2DJD9
C	299	PHE	-	EXPRESSION TAG	UNP B2DJD9
C	300	GLN	-	EXPRESSION TAG	UNP B2DJD9
C	301	GLY	-	EXPRESSION TAG	UNP B2DJD9
C	302	PRO	-	EXPRESSION TAG	UNP B2DJD9
C	440	LYS	GLU	SEE REMARK 999	UNP B2DJD9
C	584	ASP	ASN	SEE REMARK 999	UNP B2DJD9
D	285	ALA	-	EXPRESSION TAG	UNP B2DJD9
D	286	HIS	-	EXPRESSION TAG	UNP B2DJD9
D	287	HIS	-	EXPRESSION TAG	UNP B2DJD9

Continued on next page...

Continued from previous page...

Chain	Residue	Modelled	Actual	Comment	Reference
D	288	HIS	-	EXPRESSION TAG	UNP B2DJD9
D	289	HIS	-	EXPRESSION TAG	UNP B2DJD9
D	290	HIS	-	EXPRESSION TAG	UNP B2DJD9
D	291	HIS	-	EXPRESSION TAG	UNP B2DJD9
D	292	SER	-	EXPRESSION TAG	UNP B2DJD9
D	293	SER	-	EXPRESSION TAG	UNP B2DJD9
D	294	GLY	-	EXPRESSION TAG	UNP B2DJD9
D	295	LEU	-	EXPRESSION TAG	UNP B2DJD9
D	296	GLU	-	EXPRESSION TAG	UNP B2DJD9
D	297	VAL	-	EXPRESSION TAG	UNP B2DJD9
D	298	LEU	-	EXPRESSION TAG	UNP B2DJD9
D	299	PHE	-	EXPRESSION TAG	UNP B2DJD9
D	300	GLN	-	EXPRESSION TAG	UNP B2DJD9
D	301	GLY	-	EXPRESSION TAG	UNP B2DJD9
D	302	PRO	-	EXPRESSION TAG	UNP B2DJD9
D	440	LYS	GLU	SEE REMARK 999	UNP B2DJD9
D	584	ASP	ASN	SEE REMARK 999	UNP B2DJD9

- Molecule 2 is ZANAMIVIR (three-letter code: ZMR) (formula: C₁₂H₂₀N₄O₇).



Mol	Chain	Residues	Atoms				ZeroOcc	AltConf
2	A	1	Total	C	N	O	0	0
			23	12	4	7		
2	B	1	Total	C	N	O	0	0
			23	12	4	7		
2	C	1	Total	C	N	O	0	0
			23	12	4	7		

Continued on next page...

Continued from previous page...

Mol	Chain	Residues	Atoms				ZeroOcc	AltConf
2	D	1	Total	C	N	O	0	0
			23	12	4	7		

- Molecule 3 is CHLORIDE ION (three-letter code: CL) (formula: Cl).

Mol	Chain	Residues	Atoms		ZeroOcc	AltConf
3	B	1	Total	Cl	0	0
			1	1		
3	A	1	Total	Cl	0	0
			1	1		
3	D	1	Total	Cl	0	0
			1	1		
3	C	1	Total	Cl	0	0
			1	1		

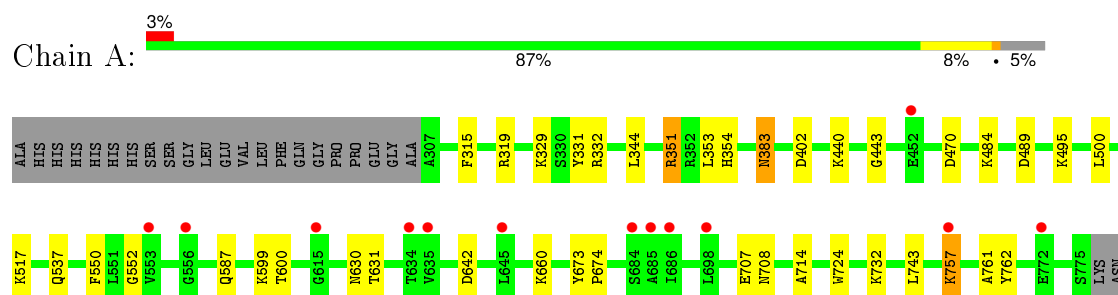
- Molecule 4 is water.

Mol	Chain	Residues	Atoms		ZeroOcc	AltConf
4	A	347	Total	O	0	2
			349	349		
4	B	297	Total	O	0	0
			297	297		
4	C	343	Total	O	0	1
			344	344		
4	D	307	Total	O	0	0
			307	307		

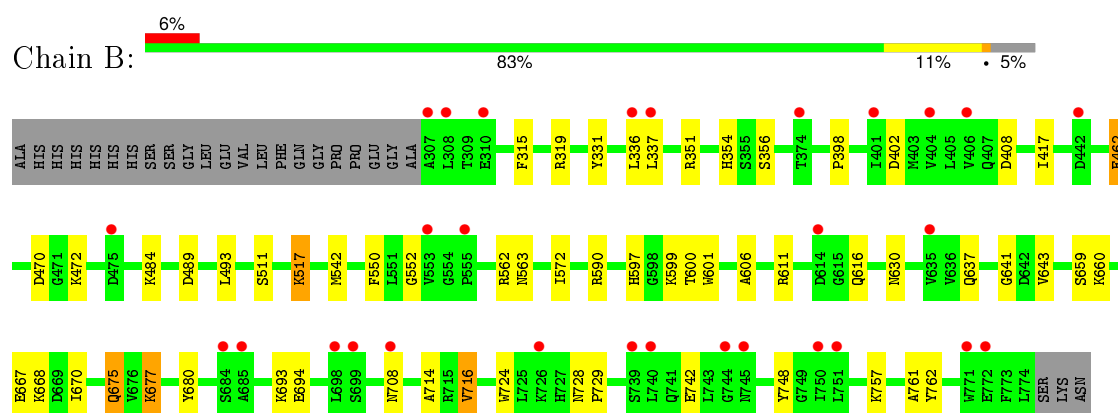
3 Residue-property plots

These plots are drawn for all protein, RNA and DNA chains in the entry. The first graphic for a chain summarises the proportions of errors displayed in the second graphic. The second graphic shows the sequence view annotated by issues in geometry and electron density. Residues are color-coded according to the number of geometric quality criteria for which they contain at least one outlier: green = 0, yellow = 1, orange = 2 and red = 3 or more. A red dot above a residue indicates a poor fit to the electron density ($RSRZ > 2$). Stretches of 2 or more consecutive residues without any outlier are shown as a green connector. Residues present in the sample, but not in the model, are shown in grey.

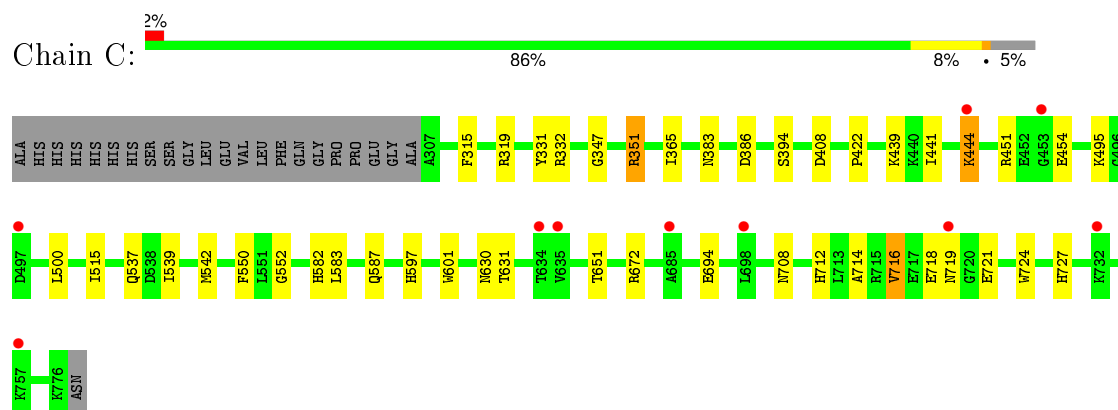
• Molecule 1: NEURAMINIDASE A



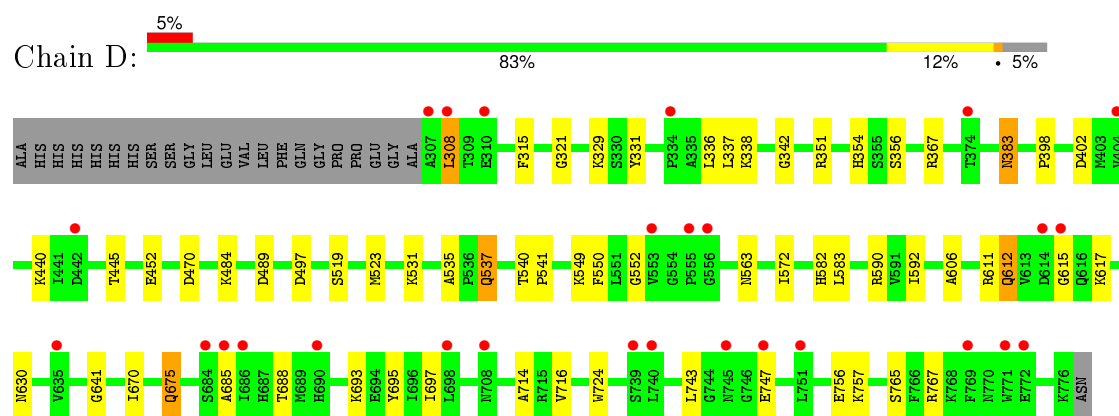
• Molecule 1: NEURAMINIDASE A



• Molecule 1: NEURAMINIDASE A



• Molecule 1: NEURAMINIDASE A



4 Data and refinement statistics

Property	Value	Source
Space group	P 1	Depositor
Cell constants a, b, c, α , β , γ	49.86Å 87.16Å 126.41Å 104.06° 91.04° 106.68°	Depositor
Resolution (Å)	27.81 – 1.89 27.81 – 1.89	Depositor EDS
% Data completeness (in resolution range)	100.0 (27.81-1.89) 86.5 (27.81-1.89)	Depositor EDS
R_{merge}	0.06	Depositor
R_{sym}	(Not available)	Depositor
$\langle I/\sigma(I) \rangle$ ¹	2.02 (at 1.89Å)	Xtriage
Refinement program	REFMAC 5.2.0019	Depositor
R, R_{free}	0.208 , 0.257 0.206 , 0.255	Depositor DCC
R_{free} test set	3718 reflections (2.56%)	DCC
Wilson B-factor (Å ²)	29.1	Xtriage
Anisotropy	0.114	Xtriage
Bulk solvent k_{sol} (e/Å ³), B_{sol} (Å ²)	0.31 , 44.1	EDS
Estimated twinning fraction	0.107 for h,-h-k,-l	Xtriage
L-test for twinning ²	$\langle L \rangle = 0.50$, $\langle L^2 \rangle = 0.34$	Xtriage
Outliers	0 of 148773 reflections	Xtriage
F_o, F_c correlation	0.95	EDS
Total number of atoms	16385	wwPDB-VP
Average B, all atoms (Å ²)	32.0	wwPDB-VP

Xtriage's analysis on translational NCS is as follows: *The largest off-origin peak in the Patterson function is 4.80% of the height of the origin peak. No significant pseudotranslation is detected.*

¹Intensities estimated from amplitudes.

²Theoretical values of $\langle |L| \rangle$, $\langle L^2 \rangle$ for acentric reflections are 0.5, 0.375 respectively for untwinned datasets, and 0.333, 0.2 for perfectly twinned datasets.

5 Model quality [i](#)

5.1 Standard geometry [i](#)

Bond lengths and bond angles in the following residue types are not validated in this section: ZMR, CL

The Z score for a bond length (or angle) is the number of standard deviations the observed value is removed from the expected value. A bond length (or angle) with $|Z| > 5$ is considered an outlier worth inspection. RMSZ is the root-mean-square of all Z scores of the bond lengths (or angles).

Mol	Chain	Bond lengths		Bond angles	
		RMSZ	$\# Z > 5$	RMSZ	$\# Z > 5$
1	A	0.50	0/3825	0.62	0/5169
1	B	0.46	0/3809	0.61	0/5146
1	C	0.49	0/3843	0.63	0/5191
1	D	0.46	0/3839	0.61	0/5185
All	All	0.48	0/15316	0.62	0/20691

There are no bond length outliers.

There are no bond angle outliers.

There are no chirality outliers.

There are no planarity outliers.

5.2 Too-close contacts [i](#)

In the following table, the Non-H and H(model) columns list the number of non-hydrogen atoms and hydrogen atoms in the chain respectively. The H(added) column lists the number of hydrogen atoms added and optimized by MolProbity. The Clashes column lists the number of clashes within the asymmetric unit, whereas Symm-Clashes lists symmetry related clashes.

Mol	Chain	Non-H	H(model)	H(added)	Clashes	Symm-Clashes
1	A	3744	0	3635	18	0
1	B	3728	0	3632	28	0
1	C	3762	0	3659	30	0
1	D	3758	0	3659	36	0
2	A	23	0	19	0	0
2	B	23	0	19	0	0
2	C	23	0	19	0	0
2	D	23	0	19	0	0
3	A	1	0	0	0	0

Continued on next page...

Continued from previous page...

Mol	Chain	Non-H	H(model)	H(added)	Clashes	Symm-Clashes
3	B	1	0	0	0	0
3	C	1	0	0	0	0
3	D	1	0	0	0	0
4	A	349	0	0	1	0
4	B	297	0	0	3	0
4	C	344	0	0	8	0
4	D	307	0	0	5	0
All	All	16385	0	14661	112	0

The all-atom clashscore is defined as the number of clashes found per 1000 atoms (including hydrogen atoms). The all-atom clashscore for this structure is 4.

The worst 5 of 112 close contacts within the same asymmetric unit are listed below, sorted by their clash magnitude.

Atom-1	Atom-2	Interatomic distance (Å)	Clash overlap (Å)
1:C:712:HIS:HD2	1:C:727:HIS:HD2	1.13	0.91
1:C:672:ARG:NH1	4:C:2291:HOH:O	2.07	0.85
1:C:712:HIS:HD2	1:C:727:HIS:CD2	1.96	0.83
1:C:712:HIS:CD2	1:C:727:HIS:HD2	1.97	0.81
1:A:383:ASN:ND2	4:A:2047:HOH:O	2.19	0.76

There are no symmetry-related clashes.

5.3 Torsion angles [i](#)

5.3.1 Protein backbone [i](#)

In the following table, the Percentiles column shows the percent Ramachandran outliers of the chain as a percentile score with respect to all X-ray entries followed by that with respect to entries of similar resolution.

The Analysed column shows the number of residues for which the backbone conformation was analysed, and the total number of residues.

Mol	Chain	Analysed	Favoured	Allowed	Outliers	Percentiles
1	A	471/493 (96%)	444 (94%)	25 (5%)	2 (0%)	39 27
1	B	469/493 (95%)	446 (95%)	20 (4%)	3 (1%)	30 17
1	C	473/493 (96%)	454 (96%)	19 (4%)	0	100 100
1	D	473/493 (96%)	446 (94%)	26 (6%)	1 (0%)	52 42

Continued on next page...

Continued from previous page...

Mol	Chain	Analysed	Favoured	Allowed	Outliers	Percentiles
All	All	1886/1972 (96%)	1790 (95%)	90 (5%)	6 (0%)	46 35

5 of 6 Ramachandran outliers are listed below:

Mol	Chain	Res	Type
1	A	757	LYS
1	B	680	TYR
1	D	402	ASP
1	B	402	ASP
1	A	402	ASP

5.3.2 Protein sidechains ⓘ

In the following table, the Percentiles column shows the percent sidechain outliers of the chain as a percentile score with respect to all X-ray entries followed by that with respect to entries of similar resolution.

The Analysed column shows the number of residues for which the sidechain conformation was analysed, and the total number of residues.

Mol	Chain	Analysed	Rotameric	Outliers	Percentiles
1	A	405/420 (96%)	397 (98%)	8 (2%)	63 57
1	B	403/420 (96%)	389 (96%)	14 (4%)	43 31
1	C	407/420 (97%)	397 (98%)	10 (2%)	55 47
1	D	407/420 (97%)	394 (97%)	13 (3%)	46 35
All	All	1622/1680 (96%)	1577 (97%)	45 (3%)	54 41

5 of 45 residues with a non-rotameric sidechain are listed below:

Mol	Chain	Res	Type
1	B	693	LYS
1	C	394[B]	SER
1	D	630	ASN
1	C	319	ARG
1	C	444	LYS

Some sidechains can be flipped to improve hydrogen bonding and reduce clashes. 5 of 16 such sidechains are listed below:

Mol	Chain	Res	Type
1	B	637	GLN
1	B	690	HIS
1	D	322	ASN
1	B	616	GLN
1	D	383	ASN

5.3.3 RNA [i](#)

There are no RNA molecules in this entry.

5.4 Non-standard residues in protein, DNA, RNA chains [i](#)

There are no non-standard protein/DNA/RNA residues in this entry.

5.5 Carbohydrates [i](#)

There are no carbohydrates in this entry.

5.6 Ligand geometry [i](#)

Of 8 ligands modelled in this entry, 4 are monoatomic - leaving 4 for Mogul analysis.

In the following table, the Counts columns list the number of bonds (or angles) for which Mogul statistics could be retrieved, the number of bonds (or angles) that are observed in the model and the number of bonds (or angles) that are defined in the chemical component dictionary. The Link column lists molecule types, if any, to which the group is linked. The Z score for a bond length (or angle) is the number of standard deviations the observed value is removed from the expected value. A bond length (or angle) with $|Z| > 2$ is considered an outlier worth inspection. RMSZ is the root-mean-square of all Z scores of the bond lengths (or angles).

Mol	Type	Chain	Res	Link	Bond lengths			Bond angles		
					Counts	RMSZ	$\# Z > 2$	Counts	RMSZ	$\# Z > 2$
2	ZMR	A	1776	-	15,23,23	1.68	2 (13%)	18,32,32	0.87	0
2	ZMR	B	1776	-	15,23,23	1.56	1 (6%)	18,32,32	0.80	0
2	ZMR	C	1776	-	15,23,23	1.49	1 (6%)	18,32,32	1.10	2 (11%)
2	ZMR	D	1776	-	15,23,23	1.47	1 (6%)	18,32,32	0.87	1 (5%)

In the following table, the Chirals column lists the number of chiral outliers, the number of chiral centers analysed, the number of these observed in the model and the number defined in the chemical component dictionary. Similar counts are reported in the Torsion and Rings columns. '-' means no outliers of that kind were identified.

Mol	Type	Chain	Res	Link	Chirals	Torsions	Rings
2	ZMR	A	1776	-	-	0/14/38/38	0/1/1/1
2	ZMR	B	1776	-	-	0/14/38/38	0/1/1/1
2	ZMR	C	1776	-	-	0/14/38/38	0/1/1/1
2	ZMR	D	1776	-	-	0/14/38/38	0/1/1/1

All (5) bond length outliers are listed below:

Mol	Chain	Res	Type	Atoms	Z	Observed(Å)	Ideal(Å)
2	A	1776	ZMR	C5-N5	2.07	1.49	1.45
2	C	1776	ZMR	C3-C2	4.69	1.39	1.32
2	D	1776	ZMR	C3-C2	4.89	1.39	1.32
2	A	1776	ZMR	C3-C2	4.95	1.39	1.32
2	B	1776	ZMR	C3-C2	5.29	1.40	1.32

All (3) bond angle outliers are listed below:

Mol	Chain	Res	Type	Atoms	Z	Observed(°)	Ideal(°)
2	C	1776	ZMR	O6-C6-C7	-2.40	101.24	105.72
2	D	1776	ZMR	C7-C6-C5	-2.34	110.78	114.32
2	C	1776	ZMR	C6-O6-C2	2.37	118.45	114.79

There are no chirality outliers.

There are no torsion outliers.

There are no ring outliers.

No monomer is involved in short contacts.

5.7 Other polymers [i](#)

There are no such residues in this entry.

5.8 Polymer linkage issues [i](#)

There are no chain breaks in this entry.

6 Fit of model and data [i](#)

6.1 Protein, DNA and RNA chains [i](#)

In the following table, the column labelled ‘#RSRZ> 2’ contains the number (and percentage) of RSRZ outliers, followed by percent RSRZ outliers for the chain as percentile scores relative to all X-ray entries and entries of similar resolution. The OWAB column contains the minimum, median, 95th percentile and maximum values of the occupancy-weighted average B-factor per residue. The column labelled ‘Q< 0.9’ lists the number of (and percentage) of residues with an average occupancy less than 0.9.

Mol	Chain	Analysed	<RSRZ>	#RSRZ>2	OWAB(Å ²)	Q<0.9
1	A	469/493 (95%)	0.12	13 (2%) 56 60	17, 28, 41, 49	0
1	B	468/493 (94%)	0.37	29 (6%) 24 27	19, 32, 51, 59	0
1	C	470/493 (95%)	0.15	10 (2%) 67 70	19, 29, 43, 57	0
1	D	470/493 (95%)	0.35	27 (5%) 27 30	19, 33, 51, 66	0
All	All	1877/1972 (95%)	0.25	79 (4%) 40 44	17, 31, 48, 66	0

The worst 5 of 79 RSRZ outliers are listed below:

Mol	Chain	Res	Type	RSRZ
1	B	307	ALA	4.8
1	B	740	LEU	4.1
1	B	614	ASP	3.9
1	D	740	LEU	3.9
1	D	310	GLU	3.7

6.2 Non-standard residues in protein, DNA, RNA chains [i](#)

There are no non-standard protein/DNA/RNA residues in this entry.

6.3 Carbohydrates [i](#)

There are no carbohydrates in this entry.

6.4 Ligands [i](#)

In the following table, the Atoms column lists the number of modelled atoms in the group and the number defined in the chemical component dictionary. LLDF column lists the quality of electron density of the group with respect to its neighbouring residues in protein, DNA or RNA chains. The B-factors column lists the minimum, median, 95th percentile and maximum values of B factors

of atoms in the group. The column labelled 'Q< 0.9' lists the number of atoms with occupancy less than 0.9.

Mol	Type	Chain	Res	Atoms	RSCC	RSR	LLDF	B-factors(\AA^2)	Q<0.9
2	ZMR	D	1776	23/23	0.92	0.11	-0.31	25,27,30,32	0
2	ZMR	A	1776	23/23	0.95	0.09	-0.74	20,23,25,27	0
2	ZMR	B	1776	23/23	0.94	0.09	-0.80	22,26,29,32	0
2	ZMR	C	1776	23/23	0.95	0.08	-0.98	22,24,26,27	0
3	CL	C	1777	1/1	0.99	0.03	-2.29	28,28,28,28	0
3	CL	D	1777	1/1	0.99	0.05	-3.09	29,29,29,29	0
3	CL	B	1777	1/1	0.99	0.04	-3.72	27,27,27,27	0
3	CL	A	1777	1/1	1.00	0.02	-4.12	27,27,27,27	0

6.5 Other polymers [i](#)

There are no such residues in this entry.