



# Full wwPDB X-ray Structure Validation Report ⓘ

Feb 19, 2016 – 08:29 PM GMT

PDB ID : 4YBZ  
Title : Ca. Korarchaeum cryptofilum dinucleotide forming Acetyl-coenzyme A synthetase 1 in complex with ADP and with phosphorylated phosphohistidine segment (site I orientation)  
Authors : Weisse, R.H.-J.; Scheidig, A.J.  
Deposited on : 2015-02-19  
Resolution : 2.10 Å(reported)

This is a Full wwPDB X-ray Structure Validation Report for a publicly released PDB entry.  
We welcome your comments at [validation@mail.wwpdb.org](mailto:validation@mail.wwpdb.org)  
A user guide is available at  
<http://wwpdb.org/validation/2016/XrayValidationReportHelp>  
with specific help available everywhere you see the ⓘ symbol.

---

The following versions of software and data (see [references ⓘ](#)) were used in the production of this report:

MolProbity : 4.02b-467  
Mogul : 1.7.1 (RC1), CSD as537be (2016)  
Xtriage (Phenix) : 1.9-1692  
EDS : rb-20026982  
Percentile statistics : 20151230.v01 (using entries in the PDB archive December 30th 2015)  
Refmac : 5.8.0135  
CCP4 : 6.5.0  
Ideal geometry (proteins) : Engh & Huber (2001)  
Ideal geometry (DNA, RNA) : Parkinson et al. (1996)  
Validation Pipeline (wwPDB-VP) : rb-20026982

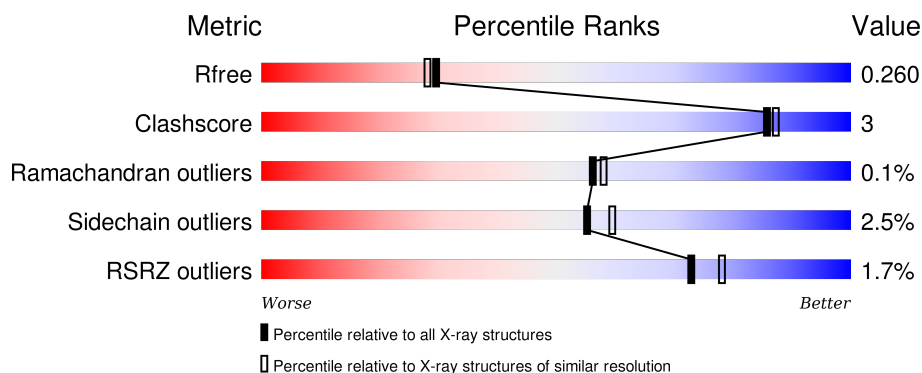
# 1 Overall quality at a glance

The following experimental techniques were used to determine the structure:

## *X-RAY DIFFRACTION*

The reported resolution of this entry is 2.10 Å.

Percentile scores (ranging between 0-100) for global validation metrics of the entry are shown in the following graphic. The table shows the number of entries on which the scores are based.



Metric	Whole archive (#Entries)	Similar resolution (#Entries, resolution range(Å))
$R_{free}$	91344	3939 (2.10-2.10)
Clashscore	102246	4460 (2.10-2.10)
Ramachandran outliers	100387	4413 (2.10-2.10)
Sidechain outliers	100360	4414 (2.10-2.10)
RSRZ outliers	91569	3948 (2.10-2.10)

The table below summarises the geometric issues observed across the polymeric chains and their fit to the electron density. The red, orange, yellow and green segments on the lower bar indicate the fraction of residues that contain outliers for  $\geq 3$ , 2, 1 and 0 types of geometric quality criteria. A grey segment represents the fraction of residues that are not modelled. The numeric value for each fraction is indicated below the corresponding segment, with a dot representing fractions  $\leq 5\%$ . The upper red bar (where present) indicates the fraction of residues that have poor fit to the electron density. The numeric value is given above the bar.

Mol	Chain	Length	Quality of chain
1	A	464	<div> <div>94%</div> <div>5%</div> </div>
1	C	464	<div> <div>96%</div> <div>.</div> </div>
2	B	230	<div> <div>5%</div> <div>87%</div> <div>12%</div> <div>.</div> </div>
2	D	230	<div> <div>4%</div> <div>81%</div> <div>17%</div> <div>.</div> </div>

The following table lists non-polymeric compounds, carbohydrate monomers and non-standard

residues in protein, DNA, RNA chains that are outliers for geometric or electron-density-fit criteria:

Mol	Type	Chain	Res	Chirality	Geometry	Clashes	Electron density
3	MG	A	501	-	-	-	X

## 2 Entry composition

There are 5 unique types of molecules in this entry. The entry contains 21640 atoms, of which 10668 are hydrogens and 0 are deuteriums.

In the tables below, the ZeroOcc column contains the number of atoms modelled with zero occupancy, the AltConf column contains the number of residues with at least one atom in alternate conformation and the Trace column contains the number of residues modelled with at most 2 atoms.

- Molecule 1 is a protein called alpha subunit of Acyl-CoA synthetase (NDP forming).

Mol	Chain	Residues	Atoms							ZeroOcc	AltConf	Trace
1	A	463	Total	C	H	N	O	P	S	0	0	0
			6973	2211	3508	577	662	1	14			
1	C	462	Total	C	H	N	O	P	S	0	0	0
			6929	2201	3480	573	660	1	14			

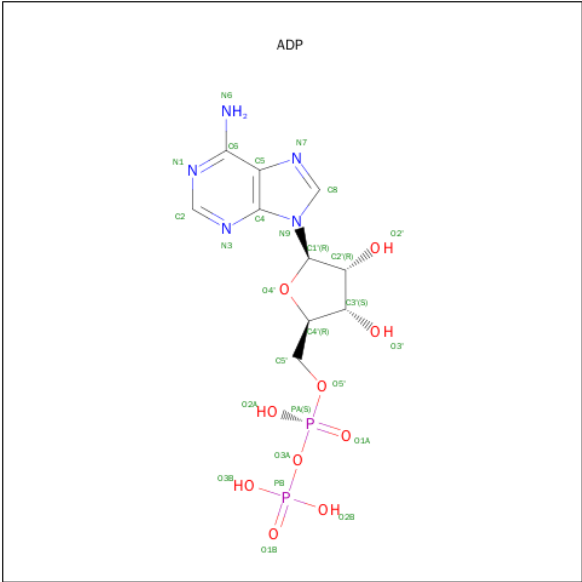
- Molecule 2 is a protein called beta subunit of Acyl-CoA synthetase (NDP forming).

Mol	Chain	Residues	Atoms						ZeroOcc	AltConf	Trace
2	B	229	Total	C	H	N	O	S	0	0	0
			3614	1140	1832	308	330	4			
2	D	229	Total	C	H	N	O	S	0	0	0
			3622	1142	1836	308	332	4			

- Molecule 3 is MAGNESIUM ION (three-letter code: MG) (formula: Mg).

Mol	Chain	Residues	Atoms		ZeroOcc	AltConf
3	A	1	Total	Mg	0	0
			1	1		
3	C	1	Total	Mg	0	0
			1	1		

- Molecule 4 is ADENOSINE-5'-DIPHOSPHATE (three-letter code: ADP) (formula: C<sub>10</sub>H<sub>15</sub>N<sub>5</sub>O<sub>10</sub>P<sub>2</sub>).



Mol	Chain	Residues	Atoms					ZeroOcc	AltConf
4	D	1	Total	C	H	N	O	0	0
			39	10	12	5	10		

- Molecule 5 is water.

Mol	Chain	Residues	Atoms		ZeroOcc	AltConf
5	A	200	Total	O	0	0
			200	200		
5	B	41	Total	O	0	0
			41	41		
5	C	177	Total	O	0	0
			177	177		
5	D	43	Total	O	0	0
			43	43		

### 3 Residue-property plots [i](#)

These plots are drawn for all protein, RNA and DNA chains in the entry. The first graphic for a chain summarises the proportions of errors displayed in the second graphic. The second graphic shows the sequence view annotated by issues in geometry and electron density. Residues are color-coded according to the number of geometric quality criteria for which they contain at least one outlier: green = 0, yellow = 1, orange = 2 and red = 3 or more. A red dot above a residue indicates a poor fit to the electron density ( $RSRZ > 2$ ). Stretches of 2 or more consecutive residues without any outlier are shown as a green connector. Residues present in the sample, but not in the model, are shown in grey.

- Molecule 1: alpha subunit of Acyl-CoA synthetase (NDP forming)

Chain A: 




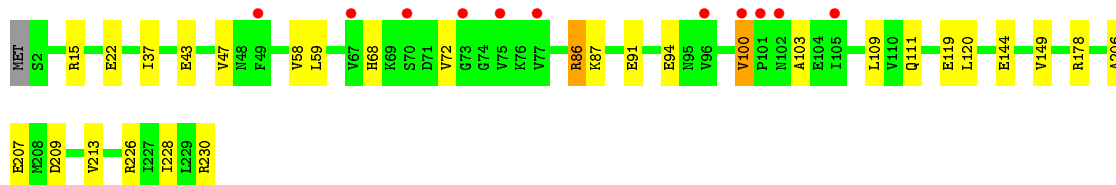
- Molecule 1: alpha subunit of Acyl-CoA synthetase (NDP forming)

Chain C: 




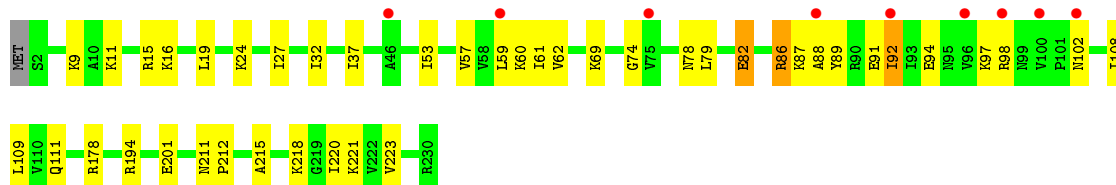
- Molecule 2: beta subunit of Acyl-CoA synthetase (NDP forming)

Chain B: 



- Molecule 2: beta subunit of Acyl-CoA synthetase (NDP forming)

Chain D: 



## 4 Data and refinement statistics

Property	Value	Source
Space group	P 21 21 21	Depositor
Cell constants a, b, c, $\alpha$ , $\beta$ , $\gamma$	105.30Å 109.88Å 126.78Å 90.00° 90.00° 90.00°	Depositor
Resolution (Å)	83.03 – 2.10 83.03 – 2.10	Depositor EDS
% Data completeness (in resolution range)	99.3 (83.03-2.10) 99.3 (83.03-2.10)	Depositor EDS
$R_{merge}$	0.20	Depositor
$R_{sym}$	(Not available)	Depositor
$\langle I/\sigma(I) \rangle$ <sup>1</sup>	1.26 (at 2.10Å)	Xtriage
Refinement program	PHENIX (phenix.refine: 1.8.4_1496)	Depositor
R, $R_{free}$	0.216 , 0.253 0.227 , 0.260	Depositor DCC
$R_{free}$ test set	4363 reflections (5.36%)	DCC
Wilson B-factor (Å <sup>2</sup> )	33.7	Xtriage
Anisotropy	0.447	Xtriage
Bulk solvent $k_{sol}$ (e/Å <sup>3</sup> ), $B_{sol}$ (Å <sup>2</sup> )	0.35 , 26.9	EDS
Estimated twinning fraction	0.079 for k,h,-l	Xtriage
L-test for twinning <sup>2</sup>	$\langle  L  \rangle = 0.45$ , $\langle L^2 \rangle = 0.28$	Xtriage
Outliers	0 of 85776 reflections	Xtriage
$F_o, F_c$ correlation	0.93	EDS
Total number of atoms	21640	wwPDB-VP
Average B, all atoms (Å <sup>2</sup> )	45.0	wwPDB-VP

Xtriage's analysis on translational NCS is as follows: *The largest off-origin peak in the Patterson function is 3.11% of the height of the origin peak. No significant pseudotranslation is detected.*

<sup>1</sup>Intensities estimated from amplitudes.

<sup>2</sup>Theoretical values of  $\langle |L| \rangle$ ,  $\langle L^2 \rangle$  for acentric reflections are 0.5, 0.375 respectively for untwinned datasets, and 0.333, 0.2 for perfectly twinned datasets.

## 5 Model quality [i](#)

### 5.1 Standard geometry [i](#)

Bond lengths and bond angles in the following residue types are not validated in this section: MG, NEP, ADP

The Z score for a bond length (or angle) is the number of standard deviations the observed value is removed from the expected value. A bond length (or angle) with  $|Z| > 5$  is considered an outlier worth inspection. RMSZ is the root-mean-square of all Z scores of the bond lengths (or angles).

Mol	Chain	Bond lengths		Bond angles	
		RMSZ	# Z  >5	RMSZ	# Z  >5
1	A	0.25	0/3517	0.45	0/4774
1	C	0.25	0/3501	0.46	0/4755
2	B	0.27	0/1810	0.51	0/2443
2	D	0.27	0/1814	0.52	0/2448
All	All	0.25	0/10642	0.48	0/14420

There are no bond length outliers.

There are no bond angle outliers.

There are no chirality outliers.

There are no planarity outliers.

### 5.2 Too-close contacts [i](#)

In the following table, the Non-H and H(model) columns list the number of non-hydrogen atoms and hydrogen atoms in the chain respectively. The H(added) column lists the number of hydrogen atoms added and optimized by MolProbity. The Clashes column lists the number of clashes within the asymmetric unit, whereas Symm-Clashes lists symmetry related clashes.

Mol	Chain	Non-H	H(model)	H(added)	Clashes	Symm-Clashes
1	A	3465	3508	3509	13	1
1	C	3449	3480	3481	8	1
2	B	1782	1832	1834	16	0
2	D	1786	1836	1838	23	0
3	A	1	0	0	0	0
3	C	1	0	0	0	0
4	D	27	12	12	1	0
5	A	200	0	0	2	0
5	B	41	0	0	1	0

*Continued on next page...*



*Continued from previous page...*

Mol	Chain	Non-H	H(model)	H(added)	Clashes	Symm-Clashes
5	C	177	0	0	1	0
5	D	43	0	0	2	0
All	All	10972	10668	10674	59	1

The all-atom clashscore is defined as the number of clashes found per 1000 atoms (including hydrogen atoms). The all-atom clashscore for this structure is 3.

All (59) close contacts within the same asymmetric unit are listed below, sorted by their clash magnitude.

Atom-1	Atom-2	Interatomic distance (Å)	Clash overlap (Å)
1:C:20:LYS:NZ	1:C:51:GLU:O	2.19	0.75
2:B:15:ARG:NH2	2:B:22:GLU:OE1	2.20	0.74
2:D:201:GLU:OE1	5:D:431:HOH:O	2.13	0.66
2:D:61:ILE:HB	2:D:92:ILE:HD11	1.79	0.65
2:D:69:LYS:NZ	4:D:300:ADP:O3A	2.31	0.63
2:D:74:GLY:HA2	2:D:92:ILE:CD1	2.32	0.60
1:C:11:SER:N	1:C:69:ASP:OD2	2.32	0.60
2:D:78:ASN:ND2	2:D:78:ASN:O	2.38	0.57
2:D:194:ARG:NH2	5:D:433:HOH:O	2.37	0.57
2:D:24:LYS:NZ	2:D:223:VAL:O	2.36	0.57
2:B:144:GLU:OE1	2:D:178:ARG:NH2	2.39	0.56
2:B:207:GLU:OE2	2:B:226:ARG:NH2	2.39	0.56
2:D:82:GLU:OE2	2:D:86:ARG:NH2	2.39	0.55
2:D:53:ILE:HD11	2:D:57:VAL:HG12	1.89	0.54
2:B:100:VAL:HG22	2:B:103:ALA:HB2	1.90	0.52
1:C:408:PRO:HB3	1:C:447:LEU:HD13	1.92	0.51
2:B:120:LEU:N	2:B:213:VAL:O	2.41	0.48
2:D:37:ILE:HB	2:D:109:LEU:HD11	1.95	0.48
2:B:43:GLU:HG3	2:B:86:ARG:HD2	1.95	0.48
2:B:100:VAL:HG22	2:B:100:VAL:O	2.14	0.47
2:D:15:ARG:NH2	2:D:19:LEU:HG	2.29	0.47
1:A:463:VAL:O	1:A:464:ARG:HB2	2.13	0.47
1:A:145:GLY:HA2	1:A:165:ILE:HD11	1.97	0.47
1:A:66:ASP:OD1	1:A:67:LYS:N	2.48	0.46
1:A:402:GLU:OE2	5:A:768:HOH:O	2.19	0.46
2:D:60:LYS:HD2	2:D:111:GLN:HE22	1.80	0.46
1:A:11:SER:N	1:A:69:ASP:OD2	2.48	0.45
2:D:74:GLY:HA2	2:D:92:ILE:HD12	1.98	0.45
2:B:206:ALA:N	2:B:228:ILE:O	2.48	0.45
2:D:89:TYR:O	2:D:92:ILE:HG23	2.17	0.45
2:B:47:VAL:CG2	2:B:86:ARG:HD3	2.47	0.44

*Continued on next page...*

*Continued from previous page...*

Atom-1	Atom-2	Interatomic distance (Å)	Clash overlap (Å)
1:A:357:PRO:HD2	1:A:360:TRP:CD2	2.52	0.44
1:A:193:VAL:HG11	1:A:222:MET:HG3	2.00	0.44
2:B:58:VAL:HB	2:B:111:GLN:HB3	2.00	0.44
2:B:37:ILE:HG22	2:B:111:GLN:HG3	1.99	0.44
1:A:131:PHE:HA	1:A:144:PHE:CE2	2.53	0.43
1:C:131:PHE:HA	1:C:144:PHE:CE1	2.53	0.43
2:B:119:GLU:OE1	5:B:322:HOH:O	2.21	0.43
2:B:206:ALA:HB2	2:B:230:ARG:HG2	2.01	0.43
2:D:61:ILE:HG13	2:D:62:VAL:N	2.33	0.43
2:D:211:ASN:HA	2:D:212:PRO:HA	1.90	0.42
2:D:87:LYS:O	2:D:91:GLU:HB2	2.19	0.42
1:A:436:THR:HA	5:A:738:HOH:O	2.19	0.42
2:D:57:VAL:HG22	2:D:79:LEU:HB2	2.01	0.42
2:D:27:ILE:CG2	2:D:32:ILE:HB	2.49	0.42
1:C:219:ARG:NH1	5:C:603:HOH:O	2.52	0.42
1:A:67:LYS:C	1:A:67:LYS:HD2	2.40	0.41
1:A:327:LYS:HG3	1:A:328:PRO:HD2	2.02	0.41
1:C:66:ASP:OD1	1:C:67:LYS:N	2.53	0.41
1:A:46:ASN:HB3	1:A:57:CYS:SG	2.61	0.41
2:B:209:ASP:HB3	2:B:226:ARG:HG2	2.02	0.41
2:B:72:VAL:O	2:B:72:VAL:HG12	2.21	0.41
2:D:88:ALA:O	2:D:92:ILE:HG22	2.21	0.41
1:C:357:PRO:HD2	1:C:360:TRP:CD2	2.56	0.41
1:C:31:ARG:HB2	1:C:31:ARG:HE	1.79	0.41
1:A:425:PHE:O	1:A:429:GLN:HG2	2.21	0.40
2:D:215:ALA:HA	2:D:220:ILE:HG22	2.02	0.40
2:B:87:LYS:O	2:B:91:GLU:HG3	2.22	0.40
2:D:59:LEU:HD13	2:D:108:ILE:HG21	2.01	0.40

All (1) symmetry-related close contacts are listed below. The label for Atom-2 includes the symmetry operator and encoded unit-cell translations to be applied.

Atom-1	Atom-2	Interatomic distance (Å)	Clash overlap (Å)
1:A:464:ARG:H	1:C:203:PRO:O[2_655]	1.50	0.10

## 5.3 Torsion angles [i](#)

### 5.3.1 Protein backbone [i](#)

In the following table, the Percentiles column shows the percent Ramachandran outliers of the chain as a percentile score with respect to all X-ray entries followed by that with respect to entries of similar resolution.

The Analysed column shows the number of residues for which the backbone conformation was analysed, and the total number of residues.

Mol	Chain	Analysed	Favoured	Allowed	Outliers	Percentiles	
1	A	460/464 (99%)	449 (98%)	10 (2%)	1 (0%)	52	53
1	C	459/464 (99%)	449 (98%)	9 (2%)	1 (0%)	52	53
2	B	227/230 (99%)	222 (98%)	5 (2%)	0	100	100
2	D	227/230 (99%)	222 (98%)	5 (2%)	0	100	100
All	All	1373/1388 (99%)	1342 (98%)	29 (2%)	2 (0%)	56	58

All (2) Ramachandran outliers are listed below:

Mol	Chain	Res	Type
1	A	348	ASN
1	C	348	ASN

### 5.3.2 Protein sidechains [i](#)

In the following table, the Percentiles column shows the percent sidechain outliers of the chain as a percentile score with respect to all X-ray entries followed by that with respect to entries of similar resolution.

The Analysed column shows the number of residues for which the sidechain conformation was analysed, and the total number of residues.

Mol	Chain	Analysed	Rotameric	Outliers	Percentiles	
1	A	368/369 (100%)	363 (99%)	5 (1%)	74	80
1	C	365/369 (99%)	362 (99%)	3 (1%)	86	91
2	B	192/197 (98%)	184 (96%)	8 (4%)	36	35
2	D	193/197 (98%)	181 (94%)	12 (6%)	23	19
All	All	1118/1132 (99%)	1090 (98%)	28 (2%)	55	59

All (28) residues with a non-rotameric sidechain are listed below:

Mol	Chain	Res	Type
1	A	67	LYS
1	A	219	ARG
1	A	229	ARG
1	A	327	LYS
1	A	406	SER
2	B	59	LEU
2	B	68	HIS
2	B	86	ARG
2	B	94	GLU
2	B	100	VAL
2	B	109	LEU
2	B	149	VAL
2	B	178	ARG
1	C	51	GLU
1	C	229	ARG
1	C	406	SER
2	D	9	LYS
2	D	11	LYS
2	D	16	LYS
2	D	82	GLU
2	D	86	ARG
2	D	92	ILE
2	D	94	GLU
2	D	97	LYS
2	D	98	ARG
2	D	102	ASN
2	D	218	LYS
2	D	221	LYS

Some sidechains can be flipped to improve hydrogen bonding and reduce clashes. There are no such sidechains identified.

### 5.3.3 RNA ⓘ

There are no RNA molecules in this entry.

## 5.4 Non-standard residues in protein, DNA, RNA chains ⓘ

2 non-standard protein/DNA/RNA residues are modelled in this entry.

In the following table, the Counts columns list the number of bonds (or angles) for which Mogul statistics could be retrieved, the number of bonds (or angles) that are observed in the model and the number of bonds (or angles) that are defined in the chemical component dictionary. The Link

column lists molecule types, if any, to which the group is linked. The Z score for a bond length (or angle) is the number of standard deviations the observed value is removed from the expected value. A bond length (or angle) with  $|Z| > 2$  is considered an outlier worth inspection. RMSZ is the root-mean-square of all Z scores of the bond lengths (or angles).

Mol	Type	Chain	Res	Link	Bond lengths			Bond angles		
					Counts	RMSZ	$\# Z  > 2$	Counts	RMSZ	$\# Z  > 2$
1	NEP	A	254	1,3	8,14,15	4.89	2 (25%)	5,20,22	1.96	1 (20%)
1	NEP	C	254	1,3	8,14,15	1.33	0	5,20,22	1.22	0

In the following table, the Chirals column lists the number of chiral outliers, the number of chiral centers analysed, the number of these observed in the model and the number defined in the chemical component dictionary. Similar counts are reported in the Torsion and Rings columns. '-' means no outliers of that kind were identified.

Mol	Type	Chain	Res	Link	Chirals	Torsions	Rings
1	NEP	A	254	1,3	-	0/4/12/14	0/1/1/1
1	NEP	C	254	1,3	-	0/4/12/14	0/1/1/1

All (2) bond length outliers are listed below:

Mol	Chain	Res	Type	Atoms	Z	Observed(Å)	Ideal(Å)
1	A	254	NEP	P-O1P	-4.21	1.45	1.54
1	A	254	NEP	P-O3P	12.81	1.58	1.47

All (1) bond angle outliers are listed below:

Mol	Chain	Res	Type	Atoms	Z	Observed(°)	Ideal(°)
1	A	254	NEP	O2P-P-O3P	-3.49	101.30	112.21

There are no chirality outliers.

There are no torsion outliers.

There are no ring outliers.

No monomer is involved in short contacts.

## 5.5 Carbohydrates

There are no carbohydrates in this entry.

## 5.6 Ligand geometry [i](#)

Of 3 ligands modelled in this entry, 2 are monoatomic - leaving 1 for Mogul analysis.

In the following table, the Counts columns list the number of bonds (or angles) for which Mogul statistics could be retrieved, the number of bonds (or angles) that are observed in the model and the number of bonds (or angles) that are defined in the chemical component dictionary. The Link column lists molecule types, if any, to which the group is linked. The Z score for a bond length (or angle) is the number of standard deviations the observed value is removed from the expected value. A bond length (or angle) with  $|Z| > 2$  is considered an outlier worth inspection. RMSZ is the root-mean-square of all Z scores of the bond lengths (or angles).

Mol	Type	Chain	Res	Link	Bond lengths			Bond angles		
					Counts	RMSZ	$\# Z  > 2$	Counts	RMSZ	$\# Z  > 2$
4	ADP	D	300	-	24,29,29	0.77	1 (4%)	23,45,45	0.36	0

In the following table, the Chirals column lists the number of chiral outliers, the number of chiral centers analysed, the number of these observed in the model and the number defined in the chemical component dictionary. Similar counts are reported in the Torsion and Rings columns. '-' means no outliers of that kind were identified.

Mol	Type	Chain	Res	Link	Chirals	Torsions	Rings
4	ADP	D	300	-	-	0/12/32/32	0/3/3/3

All (1) bond length outliers are listed below:

Mol	Chain	Res	Type	Atoms	Z	Observed(Å)	Ideal(Å)
4	D	300	ADP	PB-O1B	-2.12	1.44	1.50

There are no bond angle outliers.

There are no chirality outliers.

There are no torsion outliers.

There are no ring outliers.

1 monomer is involved in 1 short contact:

Mol	Chain	Res	Type	Clashes	Symm-Clashes
4	D	300	ADP	1	0

## 5.7 Other polymers [i](#)

There are no such residues in this entry.

## 5.8 Polymer linkage issues ⓘ

There are no chain breaks in this entry.

## 6 Fit of model and data ⓘ

### 6.1 Protein, DNA and RNA chains ⓘ

In the following table, the column labelled ‘#RSRZ> 2’ contains the number (and percentage) of RSRZ outliers, followed by percent RSRZ outliers for the chain as percentile scores relative to all X-ray entries and entries of similar resolution. The OWAB column contains the minimum, median, 95<sup>th</sup> percentile and maximum values of the occupancy-weighted average B-factor per residue. The column labelled ‘Q< 0.9’ lists the number of (and percentage) of residues with an average occupancy less than 0.9.

Mol	Chain	Analysed	<RSRZ>	#RSRZ>2	OWAB(Å <sup>2</sup> )	Q<0.9
1	A	462/464 (99%)	-0.16	2 (0%) 93 94	24, 34, 48, 61	0
1	C	461/464 (99%)	-0.15	2 (0%) 93 94	26, 35, 51, 68	0
2	B	229/230 (99%)	0.22	11 (4%) 34 43	29, 44, 90, 103	0
2	D	229/230 (99%)	0.30	9 (3%) 43 52	29, 47, 83, 89	0
All	All	1381/1388 (99%)	-0.02	24 (1%) 73 78	24, 37, 74, 103	0

All (24) RSRZ outliers are listed below:

Mol	Chain	Res	Type	RSRZ
2	B	102	ASN	3.9
2	B	100	VAL	3.8
2	D	96	VAL	3.6
2	D	100	VAL	3.3
2	D	75	VAL	3.2
1	C	259	ALA	3.1
2	D	46	ALA	2.9
2	D	102	ASN	2.9
2	B	75	VAL	2.8
1	C	404	GLY	2.8
2	B	70	SER	2.8
2	D	88	ALA	2.7
2	D	92	ILE	2.4
2	B	77	VAL	2.4
2	B	67	VAL	2.4
1	A	2	ASN	2.4
2	B	73	GLY	2.4
1	A	259	ALA	2.4
2	B	105	ILE	2.4
2	D	59	LEU	2.2
2	B	101	PRO	2.1

*Continued on next page...*



*Continued from previous page...*

Mol	Chain	Res	Type	RSRZ
2	B	49	PHE	2.1
2	D	98	ARG	2.0
2	B	96	VAL	2.0

## 6.2 Non-standard residues in protein, DNA, RNA chains [i](#)

In the following table, the Atoms column lists the number of modelled atoms in the group and the number defined in the chemical component dictionary. LLDF column lists the quality of electron density of the group with respect to its neighbouring residues in protein, DNA or RNA chains. The B-factors column lists the minimum, median, 95<sup>th</sup> percentile and maximum values of B factors of atoms in the group. The column labelled 'Q< 0.9' lists the number of atoms with occupancy less than 0.9.

Mol	Type	Chain	Res	Atoms	RSCC	RSR	LLDF	B-factors(Å <sup>2</sup> )	Q<0.9
1	NEP	A	254	14/15	0.98	0.09	-	31,43,51,54	0
1	NEP	C	254	14/15	0.97	0.10	-	33,39,48,51	0

## 6.3 Carbohydrates [i](#)

There are no carbohydrates in this entry.

## 6.4 Ligands [i](#)

In the following table, the Atoms column lists the number of modelled atoms in the group and the number defined in the chemical component dictionary. LLDF column lists the quality of electron density of the group with respect to its neighbouring residues in protein, DNA or RNA chains. The B-factors column lists the minimum, median, 95<sup>th</sup> percentile and maximum values of B factors of atoms in the group. The column labelled 'Q< 0.9' lists the number of atoms with occupancy less than 0.9.

Mol	Type	Chain	Res	Atoms	RSCC	RSR	LLDF	B-factors(Å <sup>2</sup> )	Q<0.9
3	MG	A	501	1/1	0.85	0.25	6.96	49,49,49,49	0
4	ADP	D	300	27/27	0.85	0.15	-0.07	61,72,88,89	0
3	MG	C	501	1/1	0.85	0.07	-4.49	46,46,46,46	0

## 6.5 Other polymers [i](#)

There are no such residues in this entry.