



# Full wwPDB X-ray Structure Validation Report ⓘ

May 23, 2016 – 05:27 PM EDT

PDB ID : 4YC8  
Title : C-Helix-Out Binding of Dasatinib Analog to c-Abl Kinase  
Authors : Kwarcinski, F.E.; Brandvold, K.B.; Johnson, T.J.; Phadke, S.; Meagher, J.L.;  
Seeliger, M.A.; Stuckey, J.A.; Soellner, M.B.  
Deposited on : 2015-02-19  
Resolution : 2.90 Å(reported)

This is a Full wwPDB X-ray Structure Validation Report for a publicly released PDB entry.  
We welcome your comments at [validation@mail.wwpdb.org](mailto:validation@mail.wwpdb.org)  
A user guide is available at  
<http://wwpdb.org/validation/2016/XrayValidationReportHelp>  
with specific help available everywhere you see the ⓘ symbol.

---

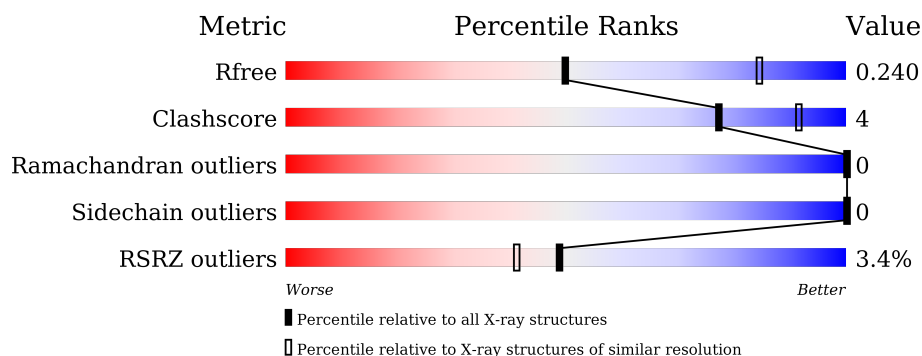
The following versions of software and data (see [references ⓘ](#)) were used in the production of this report:

MolProbity : 4.02b-467  
Mogul : 1.7.1 (RC1), CSD as537be (2016)  
Xtriage (Phenix) : 1.9-1692  
EDS : rb-20027674  
Percentile statistics : 20151230.v01 (using entries in the PDB archive December 30th 2015)  
Refmac : 5.8.0135  
CCP4 : 6.5.0  
Ideal geometry (proteins) : Engh & Huber (2001)  
Ideal geometry (DNA, RNA) : Parkinson et al. (1996)  
Validation Pipeline (wwPDB-VP) : rb-20027674

i

## X-RAY DIFFRACTION

Percentile scores (ranging between 0-100) for global validation metrics of the entry are shown in the following graphic. The table shows the number of entries on which the scores are based.



Metric	Whole archive (#Entries)	Similar resolution (#Entries, resolution range(Å))
$R_{free}$	91344	1451 (2.90-2.90)
Clashscore	102246	1668 (2.90-2.90)
Ramachandran outliers	100387	1630 (2.90-2.90)
Sidechain outliers	100360	1632 (2.90-2.90)
RSRZ outliers	91569	1456 (2.90-2.90)

The table below summarises the geometric issues observed across the polymeric chains and their fit to the electron density. The red, orange, yellow and green segments on the lower bar indicate the fraction of residues that contain outliers for  $\geq 3$ , 2, 1 and 0 types of geometric quality criteria. A grey segment represents the fraction of residues that are not modelled. The numeric value for each fraction is indicated below the corresponding segment, with a dot representing fractions  $\leq 5\%$ . The upper red bar (where present) indicates the fraction of residues that have poor fit to the electron density. The numeric value is given above the bar.

Mol	Chain	Length	Quality of chain
1	A	287	<div> <div></div> <div>85%</div> <div>5%</div> <div>10%</div> </div>
1	B	287	<div> <div>5%</div> <div>81%</div> <div>11%</div> <div>8%</div> </div>

The following table lists non-polymeric compounds, carbohydrate monomers and non-standard residues in protein, DNA, RNA chains that are outliers for geometric or electron-density-fit criteria:

Mol	Type	Chain	Res	Chirality	Geometry	Clashes	Electron density
3	EDO	A	602	-	-	-	X
3	EDO	B	602	-	-	-	X
4	MES	A	603	-	-	-	X

## 2 Entry composition

There are 5 unique types of molecules in this entry. The entry contains 4280 atoms, of which 91 are hydrogens and 0 are deuteriums.

In the tables below, the ZeroOcc column contains the number of atoms modelled with zero occupancy, the AltConf column contains the number of residues with at least one atom in alternate conformation and the Trace column contains the number of residues modelled with at most 2 atoms.

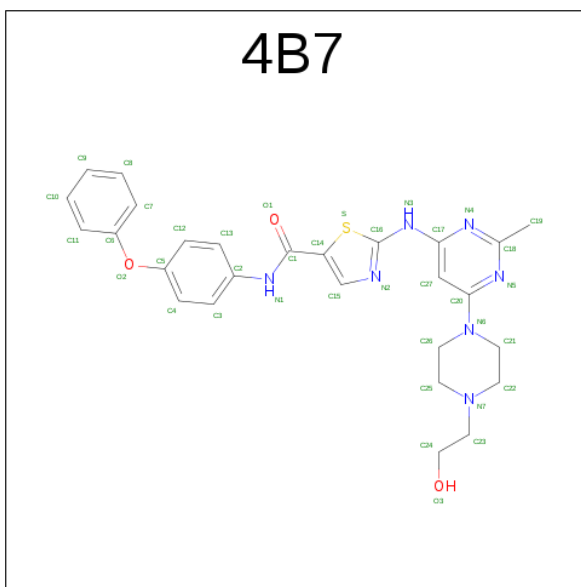
- Molecule 1 is a protein called Tyrosine-protein kinase ABL1.

Mol	Chain	Residues	Atoms					ZeroOcc	AltConf	Trace
1	A	259	Total	C	N	O	S	0	0	0
			2035	1314	331	374	16			
1	B	264	Total	C	N	O	S	0	0	0
			2038	1313	330	378	17			

There are 6 discrepancies between the modelled and reference sequences:

Chain	Residue	Modelled	Actual	Comment	Reference
A	226	GLY	-	expression tag	UNP P00519
A	227	HIS	-	expression tag	UNP P00519
A	228	MET	-	expression tag	UNP P00519
B	226	GLY	-	expression tag	UNP P00519
B	227	HIS	-	expression tag	UNP P00519
B	228	MET	-	expression tag	UNP P00519

- Molecule 2 is 2-({6-[4-(2-hydroxyethyl)piperazin-1-yl]-2-methylpyrimidin-4-yl}amino)-N-(4-phenoxyphenyl)-1,3-thiazole-5-carboxamide (three-letter code: 4B7) (formula: C<sub>27</sub>H<sub>29</sub>N<sub>7</sub>O<sub>3</sub>S).



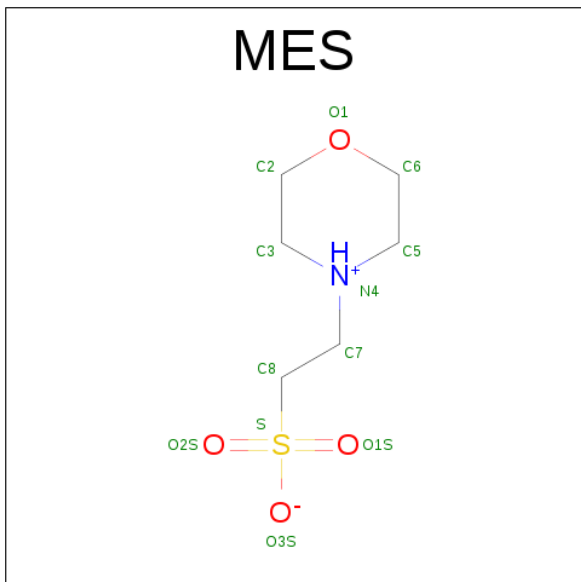
Mol	Chain	Residues	Atoms						ZeroOcc	AltConf
2	A	1	Total	C	H	N	O	S	24	0
			59	25	24	7	2	1		
2	B	1	Total	C	H	N	O	S	29	0
			67	27	29	7	3	1		

- Molecule 3 is 1,2-ETHANEDIOL (three-letter code: EDO) (formula: C<sub>2</sub>H<sub>6</sub>O<sub>2</sub>).



Mol	Chain	Residues	Atoms				ZeroOcc	AltConf
3	A	1	Total	C	H	O	6	0
			10	2	6	2		
3	B	1	Total	C	H	O	6	0
			10	2	6	2		

- Molecule 4 is 2-(N-MORPHOLINO)-ETHANESULFONIC ACID (three-letter code: MES) (formula: C<sub>6</sub>H<sub>13</sub>NO<sub>4</sub>S).



Mol	Chain	Residues	Atoms						ZeroOcc	AltConf
4	A	1	Total	C	H	N	O	S	13	0
			25	6	13	1	4	1		
4	B	1	Total	C	H	N	O	S	13	0
			25	6	13	1	4	1		

- Molecule 5 is water.

Mol	Chain	Residues	Atoms		ZeroOcc	AltConf
5	A	6	Total	O	0	0
			6	6		
5	B	5	Total	O	0	0
			5	5		



## 4 Data and refinement statistics

Property	Value	Source
Space group	P 21 21 2	Depositor
Cell constants a, b, c, $\alpha$ , $\beta$ , $\gamma$	112.76 Å   127.10 Å   57.17 Å 90.00°   90.00°   90.00°	Depositor
Resolution (Å)	47.32 – 2.90 40.14 – 2.90	Depositor EDS
% Data completeness (in resolution range)	92.6 (47.32-2.90) 92.7 (40.14-2.90)	Depositor EDS
$R_{merge}$	0.10	Depositor
$R_{sym}$	(Not available)	Depositor
$\langle I/\sigma(I) \rangle$ <sup>1</sup>	8.48 (at 2.90 Å)	Xtriage
Refinement program	BUSTER-TNT	Depositor
R, $R_{free}$	0.196   ,   0.240 0.200   ,   0.240	Depositor DCC
$R_{free}$ test set	1028 reflections (6.25%)	DCC
Wilson B-factor (Å <sup>2</sup> )	34.3	Xtriage
Anisotropy	0.043	Xtriage
Bulk solvent $k_{sol}$ (e/Å <sup>3</sup> ), $B_{sol}$ (Å <sup>2</sup> )	0.37 , 55.9	EDS
L-test for twinning <sup>2</sup>	$\langle  L  \rangle = 0.49$ , $\langle L^2 \rangle = 0.32$	Xtriage
Estimated twinning fraction	No twinning to report.	Xtriage
$F_o, F_c$ correlation	0.91	EDS
Total number of atoms	4280	wwPDB-VP
Average B, all atoms (Å <sup>2</sup> )	35.0	wwPDB-VP

Xtriage's analysis on translational NCS is as follows: *The largest off-origin peak in the Patterson function is 5.13% of the height of the origin peak. No significant pseudotranslation is detected.*

<sup>1</sup>Intensities estimated from amplitudes.

<sup>2</sup>Theoretical values of  $\langle |L| \rangle$ ,  $\langle L^2 \rangle$  for acentric reflections are 0.5, 0.375 respectively for untwinned datasets, and 0.333, 0.2 for perfectly twinned datasets.



## 5 Model quality

### 5.1 Standard geometry

Bond lengths and bond angles in the following residue types are not validated in this section: EDO, 4B7, MES

The Z score for a bond length (or angle) is the number of standard deviations the observed value is removed from the expected value. A bond length (or angle) with  $|Z| > 5$  is considered an outlier worth inspection. RMSZ is the root-mean-square of all Z scores of the bond lengths (or angles).

Mol	Chain	Bond lengths		Bond angles	
		RMSZ	# Z  >5	RMSZ	# Z  >5
1	A	0.53	0/2087	0.66	0/2840
1	B	0.49	0/2090	0.63	0/2852
All	All	0.51	0/4177	0.64	0/5692

There are no bond length outliers.

There are no bond angle outliers.

There are no chirality outliers.

There are no planarity outliers.

### 5.2 Too-close contacts

In the following table, the Non-H and H(model) columns list the number of non-hydrogen atoms and hydrogen atoms in the chain respectively. The H(added) column lists the number of hydrogen atoms added and optimized by MolProbity. The Clashes column lists the number of clashes within the asymmetric unit, whereas Symm-Clashes lists symmetry related clashes.

Mol	Chain	Non-H	H(model)	H(added)	Clashes	Symm-Clashes
1	A	2035	0	1923	10	0
1	B	2038	0	1883	18	0
2	A	35	24	0	1	0
2	B	38	29	0	1	0
3	A	4	6	6	0	0
3	B	4	6	6	0	0
4	A	12	13	13	0	0
4	B	12	13	13	0	0
5	A	6	0	0	0	0
5	B	5	0	0	0	0
All	All	4189	91	3844	30	0

The all-atom clashscore is defined as the number of clashes found per 1000 atoms (including hydrogen atoms). The all-atom clashscore for this structure is 4.

All (30) close contacts within the same asymmetric unit are listed below, sorted by their clash magnitude.

Atom-1	Atom-2	Interatomic distance (Å)	Clash overlap (Å)
1:A:360:ILE:HD11	1:A:387:LEU:HD21	1.79	0.64
1:B:326:TYR:O	1:B:330:CYS:HB3	1.99	0.63
1:B:406:THR:HG22	1:B:410:SER:HB2	1.83	0.60
1:A:242:ILE:HG21	1:A:270:VAL:HG21	1.84	0.60
2:B:601:4B7:N4	2:B:601:4B7:S	2.80	0.54
1:A:381:ASP:HB2	1:A:384:LEU:HD11	1.90	0.54
1:B:272:THR:HG22	1:B:312:TYR:CE1	2.42	0.53
2:A:601:4B7:S	2:A:601:4B7:N4	2.84	0.51
1:B:418:ILE:O	1:B:422:VAL:HG23	2.10	0.50
1:B:450:GLU:HG3	1:B:454:LYS:HE3	1.97	0.47
1:B:306:THR:HA	1:B:311:PHE:CD1	2.51	0.46
1:B:340:LEU:HD23	1:B:343:MET:CE	2.46	0.45
1:A:270:VAL:HG13	1:A:314:ILE:HG13	1.99	0.44
1:B:360:ILE:HD11	1:B:387:LEU:HD21	1.99	0.44
1:B:371:VAL:HA	1:B:376:LEU:O	2.18	0.44
1:B:404:LYS:HE3	1:B:439:PRO:O	2.19	0.43
1:B:295:HIS:HB3	1:B:298:LEU:HD12	2.01	0.42
1:A:360:ILE:HG22	1:A:362:ARG:HG3	2.02	0.42
1:A:360:ILE:HD13	1:A:360:ILE:HG21	1.66	0.41
1:B:392:THR:HG22	1:B:417:SER:HB3	2.03	0.41
1:A:360:ILE:CG2	1:A:362:ARG:HG3	2.51	0.41
1:B:360:ILE:HG21	1:B:360:ILE:HD13	1.66	0.41
1:B:306:THR:HA	1:B:311:PHE:HD1	1.85	0.41
1:A:304:VAL:HG22	1:A:306:THR:HG23	2.02	0.41
1:B:298:LEU:HD22	1:B:381:ASP:HB3	2.02	0.41
1:B:362:ARG:HH12	1:B:395:ALA:HB2	1.85	0.41
1:A:305:CYS:HB2	1:A:312:TYR:HB2	2.03	0.41
1:A:299:VAL:HG21	1:A:370:LEU:HD12	2.03	0.41
1:B:270:VAL:HG13	1:B:314:ILE:HG13	2.02	0.40
1:B:425:PHE:CE2	1:B:489:ILE:HG21	2.57	0.40

There are no symmetry-related clashes.

## 5.3 Torsion angles

### 5.3.1 Protein backbone

In the following table, the Percentiles column shows the percent Ramachandran outliers of the chain as a percentile score with respect to all X-ray entries followed by that with respect to entries of similar resolution.

The Analysed column shows the number of residues for which the backbone conformation was analysed, and the total number of residues.

Mol	Chain	Analysed	Favoured	Allowed	Outliers	Percentiles	
1	A	253/287 (88%)	245 (97%)	8 (3%)	0	100	100
1	B	260/287 (91%)	246 (95%)	14 (5%)	0	100	100
All	All	513/574 (89%)	491 (96%)	22 (4%)	0	100	100

There are no Ramachandran outliers to report.

### 5.3.2 Protein sidechains

In the following table, the Percentiles column shows the percent sidechain outliers of the chain as a percentile score with respect to all X-ray entries followed by that with respect to entries of similar resolution.

The Analysed column shows the number of residues for which the sidechain conformation was analysed, and the total number of residues.

Mol	Chain	Analysed	Rotameric	Outliers	Percentiles	
1	A	208/251 (83%)	208 (100%)	0	100	100
1	B	203/251 (81%)	203 (100%)	0	100	100
All	All	411/502 (82%)	411 (100%)	0	100	100

There are no protein residues with a non-rotameric sidechain to report.

Some sidechains can be flipped to improve hydrogen bonding and reduce clashes. There are no such sidechains identified.

### 5.3.3 RNA

There are no RNA molecules in this entry.

## 5.4 Non-standard residues in protein, DNA, RNA chains [i](#)

There are no non-standard protein/DNA/RNA residues in this entry.

## 5.5 Carbohydrates [i](#)

There are no carbohydrates in this entry.

## 5.6 Ligand geometry [i](#)

6 ligands are modelled in this entry.

In the following table, the Counts columns list the number of bonds (or angles) for which Mogul statistics could be retrieved, the number of bonds (or angles) that are observed in the model and the number of bonds (or angles) that are defined in the chemical component dictionary. The Link column lists molecule types, if any, to which the group is linked. The Z score for a bond length (or angle) is the number of standard deviations the observed value is removed from the expected value. A bond length (or angle) with  $|Z| > 2$  is considered an outlier worth inspection. RMSZ is the root-mean-square of all Z scores of the bond lengths (or angles).

Mol	Type	Chain	Res	Link	Bond lengths			Bond angles		
					Counts	RMSZ	$\# Z  > 2$	Counts	RMSZ	$\# Z  > 2$
2	4B7	A	601	-	35,39,42	1.63	10 (28%)	43,53,57	1.11	4 (9%)
3	EDO	A	602	-	3,3,3	0.70	0	2,2,2	0.18	0
4	MES	A	603	-	12,12,12	0.16	0	16,16,16	0.39	0
2	4B7	B	601	-	38,42,42	1.76	10 (26%)	47,57,57	1.29	6 (12%)
3	EDO	B	602	-	3,3,3	0.57	0	2,2,2	0.43	0
4	MES	B	603	-	12,12,12	0.32	0	16,16,16	0.46	0

In the following table, the Chirals column lists the number of chiral outliers, the number of chiral centers analysed, the number of these observed in the model and the number defined in the chemical component dictionary. Similar counts are reported in the Torsion and Rings columns. '-' means no outliers of that kind were identified.

Mol	Type	Chain	Res	Link	Chirals	Torsions	Rings
2	4B7	A	601	-	-	0/14/28/33	0/5/5/5
3	EDO	A	602	-	-	0/1/1/1	0/0/0/0
4	MES	A	603	-	-	0/6/14/14	0/1/1/1
2	4B7	B	601	-	-	0/17/33/33	0/5/5/5
3	EDO	B	602	-	-	0/1/1/1	0/0/0/0
4	MES	B	603	-	-	0/6/14/14	0/1/1/1

All (20) bond length outliers are listed below:

Mol	Chain	Res	Type	Atoms	Z	Observed(Å)	Ideal(Å)
2	A	601	4B7	C27-C20	2.01	1.42	1.39
2	A	601	4B7	C27-C17	2.06	1.44	1.39
2	A	601	4B7	C18-N4	2.09	1.37	1.34
2	B	601	4B7	C13-C2	2.09	1.42	1.39
2	B	601	4B7	C3-C2	2.17	1.42	1.39
2	B	601	4B7	C17-N3	2.44	1.42	1.38
2	A	601	4B7	C11-C6	2.56	1.43	1.38
2	A	601	4B7	C18-N5	2.66	1.39	1.34
2	B	601	4B7	C27-C20	2.76	1.43	1.39
2	B	601	4B7	C27-C17	2.88	1.46	1.39
2	A	601	4B7	C17-N4	3.00	1.39	1.34
2	A	601	4B7	C20-N6	3.01	1.43	1.37
2	B	601	4B7	C17-N4	3.05	1.40	1.34
2	B	601	4B7	C15-N2	3.10	1.40	1.36
2	B	601	4B7	C16-N3	3.12	1.41	1.36
2	A	601	4B7	C15-N2	3.15	1.40	1.36
2	A	601	4B7	C20-N5	3.28	1.39	1.34
2	A	601	4B7	C16-N3	3.36	1.42	1.36
2	B	601	4B7	C20-N6	3.40	1.44	1.37
2	B	601	4B7	C20-N5	3.84	1.40	1.34

All (10) bond angle outliers are listed below:

Mol	Chain	Res	Type	Atoms	Z	Observed(°)	Ideal(°)
2	B	601	4B7	N5-C20-N6	-3.46	112.53	116.69
2	B	601	4B7	C22-C21-N6	-2.93	105.11	110.59
2	A	601	4B7	N5-C20-N6	-2.47	113.72	116.69
2	B	601	4B7	C27-C20-N6	2.02	124.82	122.27
2	A	601	4B7	C21-N6-C20	2.04	125.17	120.45
2	B	601	4B7	C14-C1-N1	2.26	116.99	113.72
2	A	601	4B7	C14-C1-N1	2.35	117.12	113.72
2	A	601	4B7	C14-C15-N2	2.45	114.00	109.09
2	B	601	4B7	C26-N6-C20	2.54	126.32	120.45
2	B	601	4B7	C14-C15-N2	2.54	114.20	109.09

There are no chirality outliers.

There are no torsion outliers.

There are no ring outliers.

2 monomers are involved in 2 short contacts:

Mol	Chain	Res	Type	Clashes	Symm-Clashes
2	A	601	4B7	1	0

*Continued on next page...*

*Continued from previous page...*

Mol	Chain	Res	Type	Clashes	Symm-Clashes
2	B	601	4B7	1	0

## 5.7 Other polymers [i](#)

There are no such residues in this entry.

## 5.8 Polymer linkage issues [i](#)

There are no chain breaks in this entry.

## 6 Fit of model and data [i](#)

### 6.1 Protein, DNA and RNA chains [i](#)

In the following table, the column labelled ‘#RSRZ> 2’ contains the number (and percentage) of RSRZ outliers, followed by percent RSRZ outliers for the chain as percentile scores relative to all X-ray entries and entries of similar resolution. The OWAB column contains the minimum, median, 95<sup>th</sup> percentile and maximum values of the occupancy-weighted average B-factor per residue. The column labelled ‘Q< 0.9’ lists the number of (and percentage) of residues with an average occupancy less than 0.9.

Mol	Chain	Analysed	<RSRZ>	#RSRZ>2	OWAB(Å <sup>2</sup> )	Q<0.9
1	A	259/287 (90%)	-0.34	3 (1%) 81 78	11, 25, 69, 104	0
1	B	264/287 (91%)	-0.03	15 (5%) 27 21	12, 33, 84, 100	0
All	All	523/574 (91%)	-0.19	18 (3%) 49 41	11, 29, 82, 104	0

All (18) RSRZ outliers are listed below:

Mol	Chain	Res	Type	RSRZ
1	A	309	PRO	4.1
1	B	261	TRP	3.7
1	B	240	THR	3.6
1	B	277	THR	3.4
1	B	309	PRO	3.4
1	B	257	TYR	3.3
1	B	310	PRO	2.9
1	B	306	THR	2.7
1	B	312	TYR	2.6
1	B	242	ILE	2.5
1	B	243	THR	2.4
1	B	233	ASP	2.3
1	B	258	GLU	2.3
1	B	237	MET	2.2
1	B	305	CYS	2.2
1	B	245	LYS	2.1
1	A	306	THR	2.1
1	A	307	ARG	2.0

### 6.2 Non-standard residues in protein, DNA, RNA chains [i](#)

There are no non-standard protein/DNA/RNA residues in this entry.

### 6.3 Carbohydrates [i](#)

There are no carbohydrates in this entry.

### 6.4 Ligands [i](#)

In the following table, the Atoms column lists the number of modelled atoms in the group and the number defined in the chemical component dictionary. LLDF column lists the quality of electron density of the group with respect to its neighbouring residues in protein, DNA or RNA chains. The B-factors column lists the minimum, median, 95<sup>th</sup> percentile and maximum values of B factors of atoms in the group. The column labelled 'Q< 0.9' lists the number of atoms with occupancy less than 0.9.

Mol	Type	Chain	Res	Atoms	RSCC	RSR	LLDF	B-factors(Å <sup>2</sup> )	Q<0.9
3	EDO	A	602	4/4	0.83	0.30	6.91	55,57,57,57	6
3	EDO	B	602	4/4	0.78	0.30	3.40	53,54,55,55	6
4	MES	A	603	12/12	0.91	0.23	2.63	56,58,70,71	13
2	4B7	B	601	38/38	0.95	0.20	0.36	28,40,54,56	29
2	4B7	A	601	35/38	0.96	0.17	-0.18	18,34,45,47	24
4	MES	B	603	12/12	0.95	0.15	-0.26	59,60,61,62	13

### 6.5 Other polymers [i](#)

There are no such residues in this entry.