



# Full wwPDB X-ray Structure Validation Report ⓘ

Feb 1, 2016 – 10:35 PM GMT

PDB ID : 4YDH  
Title : The structure of human FMNL1 N-terminal domains bound to Cdc42  
Authors : Kuhn, S.; Anand, K.; Geyer, M.  
Deposited on : 2015-02-22  
Resolution : 3.80 Å(reported)

This is a Full wwPDB X-ray Structure Validation Report for a publicly released PDB entry.  
We welcome your comments at [validation@mail.wwpdb.org](mailto:validation@mail.wwpdb.org)  
A user guide is available at  
<http://wwpdb.org/validation/2016/XrayValidationReportHelp>  
with specific help available everywhere you see the ⓘ symbol.

---

The following versions of software and data (see [references ⓘ](#)) were used in the production of this report:

MolProbity : 4.02b-467  
Mogul : 1.7 (RC4), CSD as536be (2015)  
Xtriage (Phenix) : 1.9-1692  
EDS : rb-20026688  
Percentile statistics : 20151230.v01 (using entries in the PDB archive December 30th 2015)  
Refmac : 5.8.0135  
CCP4 : 6.5.0  
Ideal geometry (proteins) : Engh & Huber (2001)  
Ideal geometry (DNA, RNA) : Parkinson et al. (1996)  
Validation Pipeline (wwPDB-VP) : trunk26865

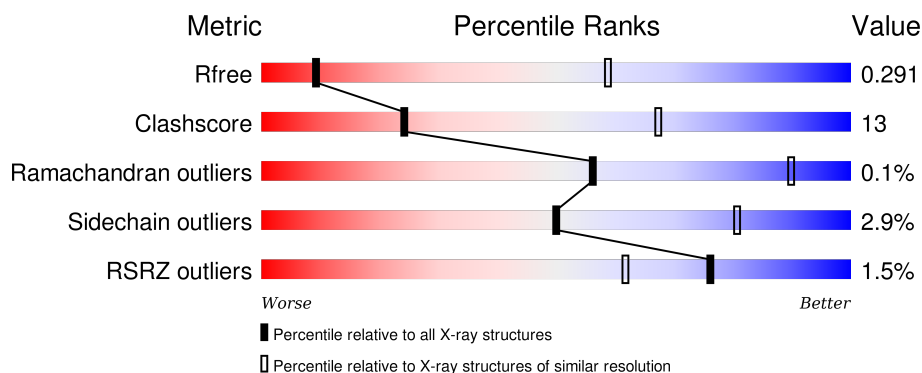
# 1 Overall quality at a glance

The following experimental techniques were used to determine the structure:

## *X-RAY DIFFRACTION*

The reported resolution of this entry is 3.80 Å.

Percentile scores (ranging between 0-100) for global validation metrics of the entry are shown in the following graphic. The table shows the number of entries on which the scores are based.



Metric	Whole archive (#Entries)	Similar resolution (#Entries, resolution range(Å))
$R_{free}$	91344	1317 (4.10-3.50)
Clashscore	102246	1458 (4.10-3.50)
Ramachandran outliers	100387	1397 (4.10-3.50)
Sidechain outliers	100360	1392 (4.10-3.50)
RSRZ outliers	91569	1325 (4.10-3.50)

The table below summarises the geometric issues observed across the polymeric chains and their fit to the electron density. The red, orange, yellow and green segments on the lower bar indicate the fraction of residues that contain outliers for  $\geq 3$ , 2, 1 and 0 types of geometric quality criteria. A grey segment represents the fraction of residues that are not modelled. The numeric value for each fraction is indicated below the corresponding segment, with a dot representing fractions  $\leq 5\%$ . The upper red bar (where present) indicates the fraction of residues that have poor fit to the electron density. The numeric value is given above the bar.

Mol	Chain	Length	Quality of chain
1	A	433	<div> <div> <div></div> <div>56%</div> <div>19%</div> <div>•</div> <div>24%</div> </div> </div>
1	C	433	<div> <div>2%</div> <div> <div></div> <div>60%</div> <div>13%</div> <div>•</div> <div>24%</div> </div> </div>
2	B	181	<div> <div>79%</div> <div>18%</div> <div>• •</div> </div>
2	D	181	<div> <div>78%</div> <div>20%</div> <div>•</div> </div>

## 2 Entry composition

There are 4 unique types of molecules in this entry. The entry contains 7564 atoms, of which 0 are hydrogens and 0 are deuteriums.

In the tables below, the ZeroOcc column contains the number of atoms modelled with zero occupancy, the AltConf column contains the number of residues with at least one atom in alternate conformation and the Trace column contains the number of residues modelled with at most 2 atoms.

- Molecule 1 is a protein called Formin-like protein 1.

Mol	Chain	Residues	Atoms					ZeroOcc	AltConf	Trace
1	A	330	Total	C	N	O	S	0	0	0
			2501	1586	420	477	18			
1	C	328	Total	C	N	O	S	0	0	0
			2363	1495	396	455	17			

There are 60 discrepancies between the modelled and reference sequences:

Chain	Residue	Modelled	Actual	Comment	Reference
A	-1	GLY	-	expression tag	UNP O95466
A	0	ALA	-	expression tag	UNP O95466
A	?	-	ALA	deletion	UNP O95466
A	?	-	SER	deletion	UNP O95466
A	?	-	ASN	deletion	UNP O95466
A	?	-	SER	deletion	UNP O95466
A	?	-	GLU	deletion	UNP O95466
A	?	-	LYS	deletion	UNP O95466
A	?	-	ASN	deletion	UNP O95466
A	?	-	LYS	deletion	UNP O95466
A	?	-	PRO	deletion	UNP O95466
A	?	-	LEU	deletion	UNP O95466
A	?	-	GLU	deletion	UNP O95466
A	?	-	GLN	deletion	UNP O95466
A	?	-	SER	deletion	UNP O95466
A	?	-	VAL	deletion	UNP O95466
A	?	-	GLU	deletion	UNP O95466
A	?	-	ASP	deletion	UNP O95466
A	?	-	LEU	deletion	UNP O95466
A	?	-	SER	deletion	UNP O95466
A	?	-	LYS	deletion	UNP O95466
A	?	-	GLY	deletion	UNP O95466
A	?	-	PRO	deletion	UNP O95466
A	?	-	PRO	deletion	UNP O95466
A	?	-	SER	deletion	UNP O95466

*Continued on next page...*

*Continued from previous page...*

Chain	Residue	Modelled	Actual	Comment	Reference
A	?	-	SER	deletion	UNP O95466
A	?	-	VAL	deletion	UNP O95466
A	?	-	PRO	deletion	UNP O95466
A	?	-	LYS	deletion	UNP O95466
A	455	ALA	PRO	conflict	UNP O95466
C	-1	GLY	-	expression tag	UNP O95466
C	0	ALA	-	expression tag	UNP O95466
C	?	-	ALA	deletion	UNP O95466
C	?	-	SER	deletion	UNP O95466
C	?	-	ASN	deletion	UNP O95466
C	?	-	SER	deletion	UNP O95466
C	?	-	GLU	deletion	UNP O95466
C	?	-	LYS	deletion	UNP O95466
C	?	-	ASN	deletion	UNP O95466
C	?	-	LYS	deletion	UNP O95466
C	?	-	PRO	deletion	UNP O95466
C	?	-	LEU	deletion	UNP O95466
C	?	-	GLU	deletion	UNP O95466
C	?	-	GLN	deletion	UNP O95466
C	?	-	SER	deletion	UNP O95466
C	?	-	VAL	deletion	UNP O95466
C	?	-	GLU	deletion	UNP O95466
C	?	-	ASP	deletion	UNP O95466
C	?	-	LEU	deletion	UNP O95466
C	?	-	SER	deletion	UNP O95466
C	?	-	LYS	deletion	UNP O95466
C	?	-	GLY	deletion	UNP O95466
C	?	-	PRO	deletion	UNP O95466
C	?	-	PRO	deletion	UNP O95466
C	?	-	SER	deletion	UNP O95466
C	?	-	SER	deletion	UNP O95466
C	?	-	VAL	deletion	UNP O95466
C	?	-	PRO	deletion	UNP O95466
C	?	-	LYS	deletion	UNP O95466
C	455	ALA	PRO	conflict	UNP O95466

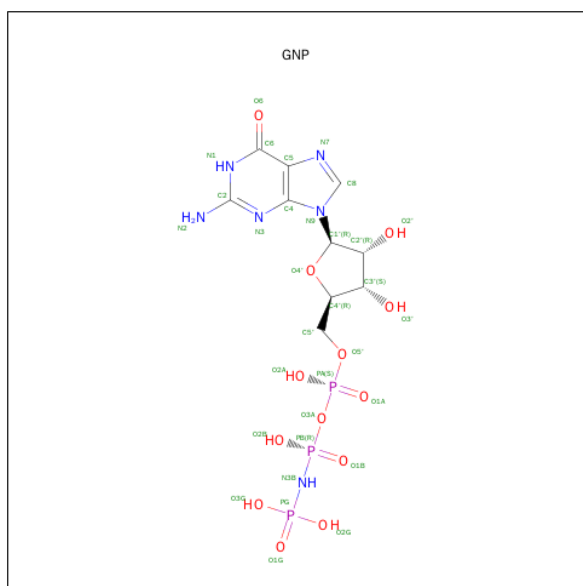
- Molecule 2 is a protein called Cell division control protein 42 homolog.

Mol	Chain	Residues	Atoms					ZeroOcc	AltConf	Trace
2	B	178	Total	C	N	O	S	0	0	0
			1330	856	206	261	7			
2	D	178	Total	C	N	O	S	0	0	0
			1304	835	203	259	7			

There are 4 discrepancies between the modelled and reference sequences:

Chain	Residue	Modelled	Actual	Comment	Reference
B	-1	GLY	-	expression tag	UNP P60953
B	0	ALA	-	expression tag	UNP P60953
D	-1	GLY	-	expression tag	UNP P60953
D	0	ALA	-	expression tag	UNP P60953

- Molecule 3 is PHOSPHOAMINOPHOSPHONIC ACID-GUANYLATE ESTER (three-letter code: GNP) (formula:  $C_{10}H_{17}N_6O_{13}P_3$ ).



Mol	Chain	Residues	Atoms					ZeroOcc	AltConf
3	B	1	Total	C	N	O	P	0	0
			32	10	6	13	3		
3	D	1	Total	C	N	O	P	0	0
			32	10	6	13	3		

- Molecule 4 is MAGNESIUM ION (three-letter code: MG) (formula: Mg).

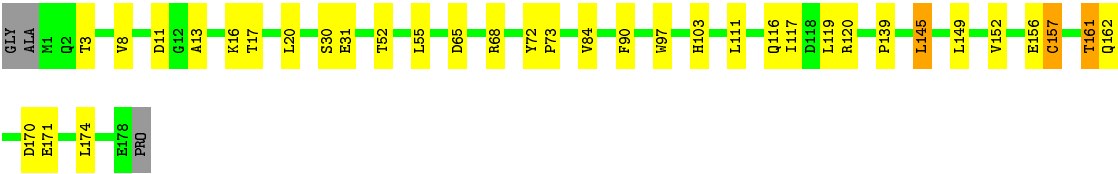
Mol	Chain	Residues	Atoms		ZeroOcc	AltConf
4	B	1	Total	Mg	0	0
			1	1		
4	D	1	Total	Mg	0	0
			1	1		



Chain B: 

79%

18%



● Molecule 2: Cell division control protein 42 homolog

Chain D: 

78%

20%



## 4 Data and refinement statistics

Property	Value	Source
Space group	P 21 21 21	Depositor
Cell constants a, b, c, $\alpha$ , $\beta$ , $\gamma$	87.60Å 102.10Å 170.60Å 90.00° 90.00° 90.00°	Depositor
Resolution (Å)	47.70 – 3.80 49.68 – 3.80	Depositor EDS
% Data completeness (in resolution range)	100.0 (47.70-3.80) 100.0 (49.68-3.80)	Depositor EDS
$R_{merge}$	0.19	Depositor
$R_{sym}$	(Not available)	Depositor
$\langle I/\sigma(I) \rangle$ <sup>1</sup>	3.39 (at 3.77Å)	Xtriage
Refinement program	PHENIX (phenix.refine: 1.9_1692)	Depositor
R, $R_{free}$	0.208 , 0.281 0.229 , 0.291	Depositor DCC
$R_{free}$ test set	782 reflections (5.00%)	DCC
Wilson B-factor (Å <sup>2</sup> )	102.8	Xtriage
Anisotropy	0.455	Xtriage
Bulk solvent $k_{sol}$ (e/Å <sup>3</sup> ), $B_{sol}$ (Å <sup>2</sup> )	0.30 , 117.4	EDS
Estimated twinning fraction	No twinning to report.	Xtriage
L-test for twinning <sup>2</sup>	$\langle  L  \rangle = 0.48$ , $\langle L^2 \rangle = 0.31$	Xtriage
Outliers	0 of 15654 reflections	Xtriage
$F_o, F_c$ correlation	0.92	EDS
Total number of atoms	7564	wwPDB-VP
Average B, all atoms (Å <sup>2</sup> )	100.0	wwPDB-VP

Xtriage's analysis on translational NCS is as follows: *The largest off-origin peak in the Patterson function is 3.15% of the height of the origin peak. No significant pseudotranslation is detected.*

<sup>1</sup>Intensities estimated from amplitudes.

<sup>2</sup>Theoretical values of  $\langle |L| \rangle$ ,  $\langle L^2 \rangle$  for acentric reflections are 0.5, 0.375 respectively for untwinned datasets, and 0.333, 0.2 for perfectly twinned datasets.



## 5 Model quality [i](#)

### 5.1 Standard geometry [i](#)

Bond lengths and bond angles in the following residue types are not validated in this section: GNP, MG

The Z score for a bond length (or angle) is the number of standard deviations the observed value is removed from the expected value. A bond length (or angle) with  $|Z| > 5$  is considered an outlier worth inspection. RMSZ is the root-mean-square of all Z scores of the bond lengths (or angles).

Mol	Chain	Bond lengths		Bond angles	
		RMSZ	# Z  >5	RMSZ	# Z  >5
1	A	0.34	0/2541	0.61	2/3450 (0.1%)
1	C	0.35	0/2404	0.69	4/3287 (0.1%)
2	B	0.34	0/1360	0.59	0/1868
2	D	0.29	0/1334	0.54	0/1839
All	All	0.34	0/7639	0.62	6/10444 (0.1%)

Chiral center outliers are detected by calculating the chiral volume of a chiral center and verifying if the center is modelled as a planar moiety or with the opposite hand. A planarity outlier is detected by checking planarity of atoms in a peptide group, atoms in a mainchain group or atoms of a sidechain that are expected to be planar.

Mol	Chain	#Chirality outliers	#Planarity outliers
1	C	0	1

There are no bond length outliers.

All (6) bond angle outliers are listed below:

Mol	Chain	Res	Type	Atoms	Z	Observed(°)	Ideal(°)
1	C	306	PHE	CB-CA-C	-17.43	75.55	110.40
1	C	306	PHE	N-CA-C	-8.43	88.25	111.00
1	A	164	ASP	N-CA-C	-7.75	90.08	111.00
1	C	307	GLU	CB-CA-C	-6.55	97.30	110.40
1	C	306	PHE	CA-C-N	-5.78	104.48	117.20
1	A	110	PHE	CB-CA-C	-5.18	100.05	110.40

There are no chirality outliers.

All (1) planarity outliers are listed below:

Mol	Chain	Res	Type	Group
1	C	111	LYS	Peptide

## 5.2 Too-close contacts ⓘ

In the following table, the Non-H and H(model) columns list the number of non-hydrogen atoms and hydrogen atoms in the chain respectively. The H(added) column lists the number of hydrogen atoms added and optimized by MolProbity. The Clashes column lists the number of clashes within the asymmetric unit, whereas Symm-Clashes lists symmetry related clashes.

Mol	Chain	Non-H	H(model)	H(added)	Clashes	Symm-Clashes
1	A	2501	0	2299	70	0
1	C	2363	0	2022	64	0
2	B	1330	0	1251	33	0
2	D	1304	0	1201	28	0
3	B	32	0	13	6	0
3	D	32	0	13	4	0
4	B	1	0	0	0	0
4	D	1	0	0	0	0
All	All	7564	0	6799	187	0

The all-atom clashscore is defined as the number of clashes found per 1000 atoms (including hydrogen atoms). The all-atom clashscore for this structure is 13.

All (187) close contacts within the same asymmetric unit are listed below, sorted by their clash magnitude.

Atom-1	Atom-2	Interatomic distance (Å)	Clash overlap (Å)
1:A:158:GLN:HE22	1:A:260:SER:HA	1.09	1.14
1:A:214:ALA:O	1:A:217:ASN:N	1.87	1.07
2:B:145:LEU:HD12	2:B:145:LEU:O	1.54	1.05
1:A:307:GLU:O	1:A:307:GLU:HG2	1.56	1.02
2:B:119:LEU:HD11	3:B:201:GNP:N2	1.75	1.01
1:C:39:PHE:C	1:C:39:PHE:HD2	1.69	0.95
1:A:111:LYS:HG2	1:A:112:ARG:H	1.38	0.89
1:C:89:SER:OG	1:C:113:ARG:NH2	2.06	0.88
1:A:306:PHE:O	1:A:307:GLU:HB3	1.74	0.86
1:C:36:GLU:C	1:C:36:GLU:CD	2.35	0.85
1:C:303:GLN:CD	1:C:307:GLU:OE2	2.12	0.85
2:B:119:LEU:HD11	3:B:201:GNP:HN21	1.45	0.81
1:C:39:PHE:CD2	1:C:39:PHE:C	2.44	0.80
1:C:303:GLN:N	1:C:303:GLN:OE1	2.13	0.79
1:A:111:LYS:HG2	1:A:112:ARG:N	1.97	0.78

*Continued on next page...*

*Continued from previous page...*

Atom-1	Atom-2	Interatomic distance (Å)	Clash overlap (Å)
2:D:116:GLN:HG2	3:D:201:GNP:C6	2.13	0.78
1:C:306:PHE:O	1:C:353:LEU:CD1	2.32	0.77
1:C:251:PRO:O	1:C:255:ASN:ND2	2.19	0.75
1:A:158:GLN:NE2	1:A:260:SER:HA	1.94	0.74
1:C:39:PHE:HD2	1:C:39:PHE:O	1.70	0.73
1:A:307:GLU:O	1:A:307:GLU:CG	2.35	0.73
1:C:59:TYR:OH	2:D:36:VAL:HG21	1.88	0.72
1:A:111:LYS:NZ	1:A:156:PHE:HZ	1.85	0.72
2:B:65:ASP:OD1	2:B:68:ARG:NH2	2.21	0.71
1:C:36:GLU:O	1:C:36:GLU:CD	2.29	0.70
1:C:34:GLU:OE1	1:C:34:GLU:C	2.30	0.70
2:B:145:LEU:HD11	2:B:149:LEU:HD12	1.74	0.70
1:C:37:GLU:O	1:C:37:GLU:CD	2.30	0.70
1:C:34:GLU:CD	1:C:34:GLU:C	2.51	0.69
1:A:44:ASN:O	1:A:45:CYS:HB3	1.92	0.69
1:C:36:GLU:OE1	1:C:37:GLU:HA	1.93	0.69
2:B:145:LEU:HD12	2:B:145:LEU:C	2.10	0.68
1:C:34:GLU:OE1	1:C:34:GLU:CA	2.38	0.68
1:C:36:GLU:C	1:C:36:GLU:OE1	2.32	0.67
1:A:41:ARG:O	1:A:44:ASN:O	2.13	0.67
1:A:163:TYR:O	1:A:165:MET:N	2.29	0.66
2:B:116:GLN:HE21	3:B:201:GNP:C4	2.08	0.66
1:A:111:LYS:NZ	1:A:156:PHE:CZ	2.64	0.66
1:C:36:GLU:OE1	1:C:37:GLU:N	2.29	0.65
2:B:17:THR:OG1	3:B:201:GNP:O2B	2.13	0.65
1:C:39:PHE:CD2	1:C:39:PHE:O	2.49	0.65
1:A:34:GLU:HG2	1:A:35:LEU:N	2.11	0.64
1:A:110:PHE:CE1	1:A:217:ASN:OD1	2.50	0.64
1:C:245:SER:O	1:C:249:ASN:ND2	2.31	0.63
1:C:37:GLU:CD	1:C:37:GLU:C	2.57	0.63
2:B:11:ASP:OD1	2:B:97:TRP:NE1	2.26	0.63
1:A:110:PHE:HE1	1:A:217:ASN:OD1	1.82	0.62
1:A:212:ARG:HA	1:A:215:LEU:HB2	1.81	0.62
2:B:116:GLN:HG2	3:B:201:GNP:C6	2.30	0.62
2:D:65:ASP:OD1	2:D:68:ARG:NH2	2.33	0.60
2:B:161:THR:O	2:B:162:GLN:C	2.39	0.60
1:A:382:PHE:CE2	1:C:388:LEU:HD11	2.37	0.59
2:B:117:ILE:HD11	2:B:156:GLU:HB2	1.85	0.59
1:A:240:TYR:CZ	1:A:242:SER:HB3	2.37	0.59
1:C:159:CYS:HA	1:C:162:THR:HG22	1.84	0.59
2:B:13:ALA:H	3:B:201:GNP:HNB3	1.51	0.59

*Continued on next page...*

*Continued from previous page...*

Atom-1	Atom-2	Interatomic distance (Å)	Clash overlap (Å)
1:A:37:GLU:HG3	1:A:40:ASN:HD22	1.67	0.59
1:A:214:ALA:O	1:A:215:LEU:C	2.40	0.58
1:C:36:GLU:OE1	1:C:37:GLU:CA	2.50	0.58
1:A:338:GLU:HG2	1:A:339:ASN:H	1.67	0.58
1:C:34:GLU:OE1	1:C:34:GLU:HA	2.04	0.57
1:A:273:LEU:HD22	1:A:326:CYS:HA	1.86	0.57
1:C:306:PHE:O	1:C:353:LEU:HD11	2.04	0.57
1:A:164:ASP:O	1:A:165:MET:HB2	2.05	0.57
1:A:384:VAL:HG12	1:C:341:ASN:OD1	2.05	0.57
2:B:145:LEU:HD11	2:B:149:LEU:CD1	2.36	0.56
2:B:3:THR:HG22	2:B:52:THR:HB	1.88	0.56
2:D:123:PRO:HA	2:D:126:ILE:HD12	1.87	0.55
1:C:303:GLN:OE1	1:C:307:GLU:OE2	2.23	0.55
1:C:273:LEU:HD13	1:C:326:CYS:HA	1.87	0.55
1:A:40:ASN:O	1:A:44:ASN:ND2	2.41	0.54
1:A:337:VAL:HG11	1:A:342:PHE:HD1	1.71	0.54
1:A:277:ALA:O	1:A:281:LEU:HD12	2.07	0.54
1:A:50:PRO:O	1:A:53:VAL:HG12	2.08	0.53
1:A:231:ILE:HD11	1:A:260:SER:HB3	1.90	0.53
1:C:131:ASN:O	2:D:66:ARG:HD2	2.08	0.53
2:D:129:LEU:HD23	2:D:136:PRO:HD3	1.89	0.53
2:D:15:GLY:HA2	3:D:201:GNP:PA	2.49	0.53
1:A:234:LEU:O	1:A:238:MET:HG3	2.08	0.52
2:D:117:ILE:HG13	2:D:158:SER:HB2	1.91	0.52
2:B:84:VAL:HG11	2:B:120:ARG:HH21	1.75	0.52
1:C:50:PRO:HA	1:C:53:VAL:HG12	1.92	0.52
1:C:84:ILE:HG23	1:C:149:VAL:HG11	1.93	0.51
1:A:119:GLN:N	1:A:119:GLN:OE1	2.43	0.51
1:A:114:VAL:O	1:A:115:GLN:C	2.49	0.51
1:A:293:PHE:HA	1:A:296:PHE:HB3	1.91	0.51
2:B:171:GLU:HA	2:B:174:LEU:HD22	1.92	0.51
2:B:171:GLU:HA	2:B:174:LEU:HB2	1.92	0.51
1:C:234:LEU:O	1:C:238:MET:HG3	2.11	0.51
1:C:34:GLU:CG	1:C:34:GLU:O	2.59	0.50
1:C:240:TYR:CZ	1:C:242:SER:HB3	2.47	0.50
1:C:36:GLU:O	1:C:36:GLU:OE2	2.30	0.50
1:A:110:PHE:CD1	1:A:111:LYS:N	2.80	0.50
2:B:20:LEU:HD22	2:B:55:LEU:HD13	1.94	0.50
1:C:306:PHE:O	1:C:353:LEU:HD12	2.10	0.50
1:A:349:GLU:O	1:A:353:LEU:HD13	2.12	0.50
1:C:314:ARG:HA	1:C:358:TYR:CZ	2.46	0.50

*Continued on next page...*

*Continued from previous page...*

Atom-1	Atom-2	Interatomic distance (Å)	Clash overlap (Å)
1:C:37:GLU:O	1:C:37:GLU:OE1	2.30	0.50
2:D:18:CYS:SG	3:D:201:GNP:H2'	2.53	0.49
1:C:332:ILE:O	1:C:336:SER:HB3	2.12	0.49
1:A:247:VAL:HG13	1:A:253:CYS:SG	2.52	0.49
1:A:148:ASP:O	1:A:152:GLU:HG2	2.12	0.49
1:A:214:ALA:O	1:A:216:ARG:N	2.46	0.48
1:C:53:VAL:HG13	1:C:54:GLN:OE1	2.13	0.48
2:D:122:ASP:O	2:D:126:ILE:HG13	2.14	0.47
2:D:98:VAL:HG21	2:D:149:LEU:HD13	1.95	0.47
2:D:8:VAL:HG22	2:D:79:LEU:HD12	1.96	0.47
1:C:163:TYR:CG	1:C:163:TYR:O	2.68	0.47
1:A:305:ARG:O	1:A:306:PHE:HB2	2.15	0.47
1:A:34:GLU:HG2	1:A:35:LEU:H	1.76	0.47
1:A:255:ASN:OD1	1:A:292:ALA:HA	2.14	0.47
1:C:129:ARG:NH1	2:D:100:GLU:OE2	2.33	0.47
2:B:120:ARG:NH1	2:B:139:PRO:HG3	2.30	0.46
1:A:111:LYS:HZ2	1:A:156:PHE:HZ	1.58	0.46
1:A:319:ASN:OD1	1:A:322:PHE:N	2.40	0.46
1:A:337:VAL:HG11	1:A:342:PHE:CD1	2.50	0.45
1:A:156:PHE:HE1	1:A:214:ALA:HB1	1.80	0.45
2:D:72:TYR:OH	2:D:100:GLU:OE1	2.29	0.45
2:B:116:GLN:HB3	2:B:119:LEU:HD13	1.96	0.45
2:D:13:ALA:H	3:D:201:GNP:HNB3	1.65	0.45
1:C:115:GLN:HB3	1:C:115:GLN:HE21	1.50	0.45
2:B:145:LEU:CD1	2:B:145:LEU:C	2.81	0.45
1:A:310:MET:O	1:A:314:ARG:HB2	2.16	0.45
1:C:37:GLU:O	1:C:37:GLU:OE2	2.34	0.45
2:D:36:VAL:HG22	2:D:37:PHE:H	1.81	0.44
2:D:36:VAL:CG2	2:D:37:PHE:N	2.80	0.44
1:A:317:ASP:HA	1:A:323:MET:HE1	1.97	0.44
1:C:244:PHE:CZ	1:C:282:VAL:HG11	2.52	0.44
1:A:388:LEU:HD11	1:C:382:PHE:CE2	2.52	0.44
2:D:84:VAL:HG11	2:D:120:ARG:HH21	1.82	0.44
1:A:297:LYS:HG3	1:A:302:GLU:HG2	1.99	0.44
1:C:42:ALA:HB1	1:C:71:GLN:HG2	1.99	0.44
2:D:91:GLU:HG2	2:D:91:GLU:H	1.61	0.44
1:A:388:LEU:HD11	1:C:382:PHE:CZ	2.53	0.44
1:A:76:VAL:HG11	1:A:135:TRP:CD1	2.52	0.44
1:A:164:ASP:O	1:A:165:MET:CB	2.66	0.44
1:A:254:VAL:HG11	1:A:288:ILE:CG2	2.48	0.44
1:A:212:ARG:O	1:A:213:LYS:C	2.55	0.44

*Continued on next page...*

*Continued from previous page...*

Atom-1	Atom-2	Interatomic distance (Å)	Clash overlap (Å)
2:B:170:ASP:O	2:B:174:LEU:HD13	2.18	0.44
2:B:117:ILE:HG12	2:B:157:CYS:O	2.18	0.43
1:C:263:ASN:O	1:C:269:LYS:NZ	2.38	0.43
2:D:169:PHE:O	2:D:173:ILE:HG13	2.18	0.43
2:B:90:PHE:CZ	2:B:145:LEU:HD23	2.53	0.43
1:C:281:LEU:O	1:C:281:LEU:HD23	2.18	0.43
1:A:111:LYS:C	1:A:113:ARG:N	2.71	0.43
1:C:34:GLU:CD	1:C:34:GLU:O	2.57	0.43
2:B:120:ARG:HH12	2:B:139:PRO:HG3	1.84	0.43
2:D:69:PRO:HA	2:D:72:TYR:CD2	2.54	0.43
1:A:127:SER:HB2	2:B:103:HIS:HE1	1.83	0.43
1:C:36:GLU:OE2	1:C:40:ASN:ND2	2.51	0.42
1:C:261:LEU:HD21	1:C:309:LEU:HD13	2.01	0.42
1:A:111:LYS:CG	1:A:112:ARG:H	2.07	0.42
1:C:252:ALA:HA	1:C:255:ASN:HD22	1.83	0.42
2:D:87:PRO:O	2:D:91:GLU:HG2	2.19	0.42
1:A:35:LEU:HA	1:A:35:LEU:HD12	1.57	0.42
1:C:83:TYR:CG	1:C:124:LEU:HD23	2.55	0.42
2:D:122:ASP:HA	2:D:123:PRO:HD2	1.82	0.42
1:C:221:VAL:HG13	1:C:226:ASP:OD2	2.20	0.42
2:B:149:LEU:HA	2:B:149:LEU:HD23	1.83	0.42
1:C:330:ILE:O	1:C:333:VAL:HG12	2.20	0.42
1:C:84:ILE:HD12	1:C:149:VAL:HG11	2.02	0.42
2:B:103:HIS:C	2:B:103:HIS:CD2	2.93	0.41
2:B:72:TYR:N	2:B:73:PRO:HD2	2.35	0.41
1:A:111:LYS:O	1:A:113:ARG:N	2.53	0.41
2:B:30:SER:N	2:B:31:GLU:OE1	2.53	0.41
2:D:36:VAL:HG22	2:D:37:PHE:N	2.35	0.41
1:C:80:PRO:O	1:C:84:ILE:HG12	2.20	0.41
2:D:7:VAL:HA	2:D:56:PHE:HB2	2.03	0.41
1:A:62:GLU:C	1:A:64:LYS:H	2.22	0.41
1:A:212:ARG:HA	1:A:215:LEU:CB	2.50	0.41
1:A:50:PRO:O	1:A:54:GLN:HG2	2.20	0.41
1:C:122:ARG:HA	1:C:229:VAL:HG11	2.02	0.41
2:D:11:ASP:OD2	2:D:89:SER:HA	2.20	0.41
1:A:111:LYS:CG	1:A:112:ARG:N	2.66	0.41
1:C:90:TYR:HE1	1:C:113:ARG:O	2.03	0.41
2:B:8:VAL:HG12	2:B:16:LYS:HD2	2.02	0.41
1:A:339:ASN:OD1	1:A:342:PHE:N	2.51	0.41
1:C:233:CYS:O	1:C:237:ILE:HG13	2.20	0.41
2:D:17:THR:OG1	2:D:35:THR:HG21	2.21	0.41

*Continued on next page...*

Continued from previous page...

Atom-1	Atom-2	Interatomic distance (Å)	Clash overlap (Å)
1:A:233:CYS:O	1:A:237:ILE:HG13	2.21	0.41
1:A:255:ASN:O	1:A:259:LEU:HD13	2.21	0.40
1:A:248:MET:SD	1:A:282:VAL:HG21	2.61	0.40
2:B:111:LEU:HD23	2:B:152:VAL:HB	2.02	0.40
2:D:79:LEU:HD22	2:D:113:VAL:HG21	2.03	0.40
1:A:69:CYS:O	1:A:73:ARG:HG3	2.21	0.40
1:C:310:MET:HG3	1:C:353:LEU:HB3	2.03	0.40
1:A:80:PRO:O	1:A:84:ILE:HG12	2.22	0.40

There are no symmetry-related clashes.

## 5.3 Torsion angles [i](#)

### 5.3.1 Protein backbone [i](#)

In the following table, the Percentiles column shows the percent Ramachandran outliers of the chain as a percentile score with respect to all X-ray entries followed by that with respect to entries of similar resolution.

The Analysed column shows the number of residues for which the backbone conformation was analysed, and the total number of residues.

Mol	Chain	Analysed	Favoured	Allowed	Outliers	Percentiles	
1	A	324/433 (75%)	304 (94%)	19 (6%)	1 (0%)	46	83
1	C	322/433 (74%)	314 (98%)	8 (2%)	0	100	100
2	B	176/181 (97%)	172 (98%)	4 (2%)	0	100	100
2	D	176/181 (97%)	173 (98%)	3 (2%)	0	100	100
All	All	998/1228 (81%)	963 (96%)	34 (3%)	1 (0%)	56	90

All (1) Ramachandran outliers are listed below:

Mol	Chain	Res	Type
1	A	251	PRO

### 5.3.2 Protein sidechains [i](#)

In the following table, the Percentiles column shows the percent sidechain outliers of the chain as a percentile score with respect to all X-ray entries followed by that with respect to entries of similar resolution.

The Analysed column shows the number of residues for which the sidechain conformation was analysed, and the total number of residues.

Mol	Chain	Analysed	Rotameric	Outliers	Percentiles	
1	A	249/377 (66%)	243 (98%)	6 (2%)	57	84
1	C	213/377 (56%)	202 (95%)	11 (5%)	29	69
2	B	138/159 (87%)	135 (98%)	3 (2%)	60	85
2	D	136/159 (86%)	135 (99%)	1 (1%)	88	95
All	All	736/1072 (69%)	715 (97%)	21 (3%)	50	81

All (21) residues with a non-rotameric sidechain are listed below:

Mol	Chain	Res	Type
1	A	61	ASN
1	A	114	VAL
1	A	152	GLU
1	A	211	SER
1	A	255	ASN
1	A	328	GLN
2	B	145	LEU
2	B	157	CYS
2	B	161	THR
1	C	34	GLU
1	C	37	GLU
1	C	39	PHE
1	C	54	GLN
1	C	113	ARG
1	C	115	GLN
1	C	152	GLU
1	C	249	ASN
1	C	256	GLU
1	C	336	SER
1	C	356	ASP
2	D	155	VAL

Some sidechains can be flipped to improve hydrogen bonding and reduce clashes. All (8) such sidechains are listed below:

Mol	Chain	Res	Type
1	A	40	ASN
1	A	44	ASN
1	A	158	GLN
1	A	217	ASN

*Continued on next page...*



*Continued from previous page...*

Mol	Chain	Res	Type
2	B	103	HIS
2	B	116	GLN
1	C	115	GLN
1	C	228	HIS

### 5.3.3 RNA [i](#)

There are no RNA molecules in this entry.

### 5.4 Non-standard residues in protein, DNA, RNA chains [i](#)

There are no non-standard protein/DNA/RNA residues in this entry.

### 5.5 Carbohydrates [i](#)

There are no carbohydrates in this entry.

### 5.6 Ligand geometry [i](#)

Of 4 ligands modelled in this entry, 2 are monoatomic - leaving 2 for Mogul analysis.

In the following table, the Counts columns list the number of bonds (or angles) for which Mogul statistics could be retrieved, the number of bonds (or angles) that are observed in the model and the number of bonds (or angles) that are defined in the chemical component dictionary. The Link column lists molecule types, if any, to which the group is linked. The Z score for a bond length (or angle) is the number of standard deviations the observed value is removed from the expected value. A bond length (or angle) with  $|Z| > 2$  is considered an outlier worth inspection. RMSZ is the root-mean-square of all Z scores of the bond lengths (or angles).

Mol	Type	Chain	Res	Link	Bond lengths			Bond angles		
					Counts	RMSZ	$\# Z  > 2$	Counts	RMSZ	$\# Z  > 2$
3	GNP	B	201	4	28,34,34	2.01	10 (35%)	33,54,54	2.22	13 (39%)
3	GNP	D	201	4	28,34,34	2.32	9 (32%)	33,54,54	1.85	9 (27%)

In the following table, the Chirals column lists the number of chiral outliers, the number of chiral centers analysed, the number of these observed in the model and the number defined in the chemical component dictionary. Similar counts are reported in the Torsion and Rings columns. '-' means no outliers of that kind were identified.

Mol	Type	Chain	Res	Link	Chirals	Torsions	Rings
3	GNP	B	201	4	-	1/12/38/38	0/3/3/3
3	GNP	D	201	4	-	0/12/38/38	0/3/3/3

All (19) bond length outliers are listed below:

Mol	Chain	Res	Type	Atoms	Z	Observed(Å)	Ideal(Å)
3	D	201	GNP	C8-N7	-2.84	1.29	1.34
3	B	201	GNP	C8-N7	-2.80	1.29	1.34
3	D	201	GNP	C3'-C4'	-2.50	1.46	1.53
3	B	201	GNP	C3'-C4'	-2.48	1.46	1.53
3	D	201	GNP	PB-O2B	-2.28	1.50	1.56
3	B	201	GNP	PA-O2A	-2.21	1.45	1.54
3	B	201	GNP	PG-O3G	-2.01	1.51	1.56
3	B	201	GNP	C5'-C4'	2.09	1.58	1.51
3	D	201	GNP	C5'-C4'	2.10	1.58	1.51
3	D	201	GNP	O3'-C3'	2.50	1.49	1.43
3	B	201	GNP	O3'-C3'	2.51	1.49	1.43
3	B	201	GNP	PB-N3B	2.76	1.70	1.63
3	D	201	GNP	PB-N3B	2.78	1.70	1.63
3	D	201	GNP	PG-N3B	3.12	1.71	1.63
3	B	201	GNP	PG-N3B	3.14	1.71	1.63
3	B	201	GNP	PB-O1B	3.71	1.50	1.46
3	B	201	GNP	PG-O1G	5.40	1.52	1.46
3	D	201	GNP	PB-O1B	5.76	1.52	1.46
3	D	201	GNP	PG-O1G	6.64	1.53	1.46

All (22) bond angle outliers are listed below:

Mol	Chain	Res	Type	Atoms	Z	Observed(°)	Ideal(°)
3	B	201	GNP	O1G-PG-N3B	-5.76	103.07	111.90
3	D	201	GNP	C5-C6-N1	-4.83	116.98	123.59
3	B	201	GNP	C5-C6-N1	-4.82	117.00	123.59
3	B	201	GNP	N3-C2-N1	-3.17	122.61	127.44
3	D	201	GNP	N3-C2-N1	-3.16	122.64	127.44
3	B	201	GNP	O1B-PB-N3B	-2.79	107.62	111.90
3	B	201	GNP	O3A-PB-N3B	-2.65	99.15	106.44
3	D	201	GNP	O3A-PB-N3B	-2.64	99.17	106.44
3	B	201	GNP	O3'-C3'-C2'	-2.04	105.20	111.83
3	D	201	GNP	O3'-C3'-C2'	-2.02	105.25	111.83
3	B	201	GNP	C5'-C4'-C3'	-2.02	107.21	115.21
3	D	201	GNP	C5'-C4'-C3'	-2.01	107.23	115.21
3	B	201	GNP	O2A-PA-O3A	2.06	114.43	105.09
3	D	201	GNP	O2'-C2'-C3'	2.11	118.69	111.83

*Continued on next page...*

*Continued from previous page...*

Mol	Chain	Res	Type	Atoms	Z	Observed(°)	Ideal(°)
3	B	201	GNP	O2'-C2'-C3'	2.12	118.73	111.83
3	B	201	GNP	O3G-PG-O2G	2.45	114.83	107.58
3	B	201	GNP	O2B-PB-O1B	2.85	115.94	110.00
3	D	201	GNP	O2B-PB-O1B	2.85	115.95	110.00
3	B	201	GNP	C2'-C3'-C4'	3.15	109.09	102.61
3	D	201	GNP	C2'-C3'-C4'	3.16	109.10	102.61
3	D	201	GNP	C6-N1-C2	4.41	122.06	115.94
3	B	201	GNP	C6-N1-C2	4.42	122.07	115.94

There are no chirality outliers.

All (1) torsion outliers are listed below:

Mol	Chain	Res	Type	Atoms
3	B	201	GNP	O1B-PB-N3B-PG

There are no ring outliers.

2 monomers are involved in 10 short contacts:

Mol	Chain	Res	Type	Clashes	Symm-Clashes
3	B	201	GNP	6	0
3	D	201	GNP	4	0

## 5.7 Other polymers [i](#)

There are no such residues in this entry.

## 5.8 Polymer linkage issues [i](#)

There are no chain breaks in this entry.

## 6 Fit of model and data ⓘ

### 6.1 Protein, DNA and RNA chains ⓘ

In the following table, the column labelled ‘#RSRZ> 2’ contains the number (and percentage) of RSRZ outliers, followed by percent RSRZ outliers for the chain as percentile scores relative to all X-ray entries and entries of similar resolution. The OWAB column contains the minimum, median, 95<sup>th</sup> percentile and maximum values of the occupancy-weighted average B-factor per residue. The column labelled ‘Q< 0.9’ lists the number of (and percentage) of residues with an average occupancy less than 0.9.

Mol	Chain	Analysed	<RSRZ>	#RSRZ>2	OWAB(Å <sup>2</sup> )	Q<0.9
1	A	330/433 (76%)	-0.21	5 (1%) 76 62	66, 100, 186, 223	0
1	C	328/433 (75%)	-0.18	10 (3%) 54 37	69, 97, 185, 222	0
2	B	178/181 (98%)	-0.30	0 100 100	57, 88, 111, 142	0
2	D	178/181 (98%)	-0.33	0 100 100	70, 95, 125, 147	0
All	All	1014/1228 (82%)	-0.24	15 (1%) 76 62	57, 96, 170, 223	0

All (15) RSRZ outliers are listed below:

Mol	Chain	Res	Type	RSRZ
1	C	413	GLU	3.9
1	C	412	THR	3.5
1	A	412	THR	3.2
1	C	411	LEU	2.8
1	C	414	ARG	2.8
1	A	417	ASP	2.6
1	C	162	THR	2.5
1	C	164	ASP	2.5
1	A	420	ASN	2.3
1	C	420	ASN	2.2
1	C	418	ALA	2.2
1	C	161	VAL	2.1
1	A	411	LEU	2.0
1	C	409	ALA	2.0
1	A	422	SER	2.0

### 6.2 Non-standard residues in protein, DNA, RNA chains ⓘ

There are no non-standard protein/DNA/RNA residues in this entry.

### 6.3 Carbohydrates [i](#)

There are no carbohydrates in this entry.

### 6.4 Ligands [i](#)

In the following table, the Atoms column lists the number of modelled atoms in the group and the number defined in the chemical component dictionary. LLDF column lists the quality of electron density of the group with respect to its neighbouring residues in protein, DNA or RNA chains. The B-factors column lists the minimum, median, 95<sup>th</sup> percentile and maximum values of B factors of atoms in the group. The column labelled 'Q< 0.9' lists the number of atoms with occupancy less than 0.9.

Mol	Type	Chain	Res	Atoms	RSCC	RSR	LLDF	B-factors( $\text{\AA}^2$ )	Q<0.9
3	GNP	D	201	32/32	0.88	0.24	0.96	7,10,13,15	0
4	MG	B	202	1/1	0.92	0.22	0.52	73,73,73,73	0
3	GNP	B	201	32/32	0.91	0.21	-0.31	7,10,13,15	0
4	MG	D	202	1/1	0.91	0.24	-	92,92,92,92	0

### 6.5 Other polymers [i](#)

There are no such residues in this entry.