



Full wwPDB X-ray Structure Validation Report ⓘ

Feb 1, 2016 – 06:48 AM GMT

PDB ID : 2YFX
Title : Structure of L1196M Mutant Anaplastic Lymphoma Kinase in Complex with Crizotinib
Authors : McTigue, M.; Deng, Y.; Liu, W.; Brooun, A.
Deposited on : 2011-04-08
Resolution : 1.70 Å(reported)

This is a Full wwPDB X-ray Structure Validation Report for a publicly released PDB entry.
We welcome your comments at validation@mail.wwpdb.org
A user guide is available at
<http://wwpdb.org/validation/2016/XrayValidationReportHelp>
with specific help available everywhere you see the ⓘ symbol.

The following versions of software and data (see [references ⓘ](#)) were used in the production of this report:

MolProbity : 4.02b-467
Mogul : 1.7 (RC4), CSD as536be (2015)
Xtriage (Phenix) : 1.9-1692
EDS : rb-20026688
Percentile statistics : 20151230.v01 (using entries in the PDB archive December 30th 2015)
Refmac : 5.8.0135
CCP4 : 6.5.0
Ideal geometry (proteins) : Engh & Huber (2001)
Ideal geometry (DNA, RNA) : Parkinson et al. (1996)
Validation Pipeline (wwPDB-VP) : trunk26865

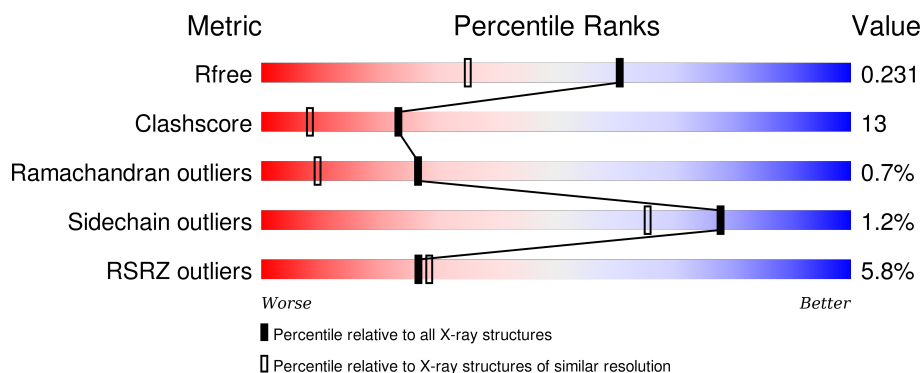
1 Overall quality at a glance

The following experimental techniques were used to determine the structure:

X-RAY DIFFRACTION

The reported resolution of this entry is 1.70 Å.

Percentile scores (ranging between 0-100) for global validation metrics of the entry are shown in the following graphic. The table shows the number of entries on which the scores are based.



Metric	Whole archive (#Entries)	Similar resolution (#Entries, resolution range(Å))
R_{free}	91344	3190 (1.70-1.70)
Clashscore	102246	3585 (1.70-1.70)
Ramachandran outliers	100387	3527 (1.70-1.70)
Sidechain outliers	100360	3527 (1.70-1.70)
RSRZ outliers	91569	3200 (1.70-1.70)

The table below summarises the geometric issues observed across the polymeric chains and their fit to the electron density. The red, orange, yellow and green segments on the lower bar indicate the fraction of residues that contain outliers for ≥ 3 , 2, 1 and 0 types of geometric quality criteria. A grey segment represents the fraction of residues that are not modelled. The numeric value for each fraction is indicated below the corresponding segment, with a dot representing fractions $\leq 5\%$. The upper red bar (where present) indicates the fraction of residues that have poor fit to the electron density. The numeric value is given above the bar.

Mol	Chain	Length	Quality of chain
1	A	327	

The following table lists non-polymeric compounds, carbohydrate monomers and non-standard residues in protein, DNA, RNA chains that are outliers for geometric or electron-density-fit criteria:

Mol	Type	Chain	Res	Chirality	Geometry	Clashes	Electron density
2	VGH	A	9000	-	-	-	X

2 Entry composition

There are 3 unique types of molecules in this entry. The entry contains 2567 atoms, of which 0 are hydrogens and 0 are deuteriums.

In the tables below, the ZeroOcc column contains the number of atoms modelled with zero occupancy, the AltConf column contains the number of residues with at least one atom in alternate conformation and the Trace column contains the number of residues modelled with at most 2 atoms.

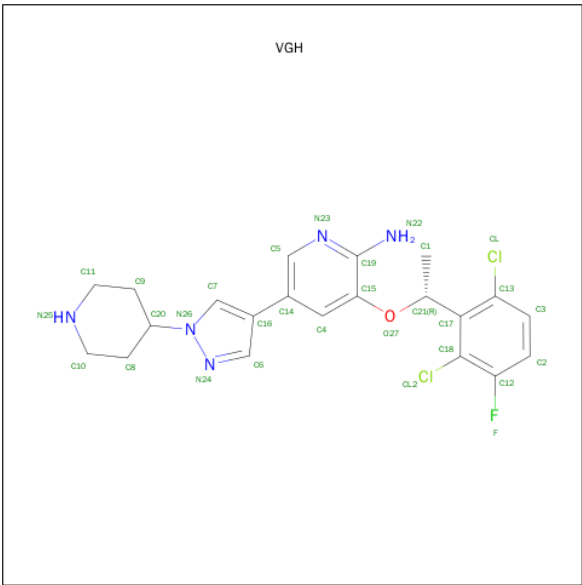
- Molecule 1 is a protein called TYROSINE-PROTEIN KINASE RECEPTOR.

Mol	Chain	Residues	Atoms					ZeroOcc	AltConf	Trace
			Total	C	N	O	S			
1	A	293	2300	1466	392	420	22	0	0	1

There are 9 discrepancies between the modelled and reference sequences:

Chain	Residue	Modelled	Actual	Comment	Reference
A	1085	MET	-	EXPRESSION TAG	UNP B6EXY4
A	1086	ALA	-	EXPRESSION TAG	UNP B6EXY4
A	1087	HIS	-	EXPRESSION TAG	UNP B6EXY4
A	1088	HIS	-	EXPRESSION TAG	UNP B6EXY4
A	1089	HIS	-	EXPRESSION TAG	UNP B6EXY4
A	1090	HIS	-	EXPRESSION TAG	UNP B6EXY4
A	1091	HIS	-	EXPRESSION TAG	UNP B6EXY4
A	1092	HIS	-	EXPRESSION TAG	UNP B6EXY4
A	1196	MET	LEU	ENGINEERED MUTATION	UNP B6EXY4

- Molecule 2 is 3-[(1R)-1-(2,6-DICHLORO-3-FLUOROPHENYL)ETHOXY]-5-(1-PIPERIDIN-4-YL-1H-PYRAZOL-4-YL)PYRIDIN-2-AMINE (three-letter code: VGH) (formula: C₂₁H₂₂Cl₂FN₅O).

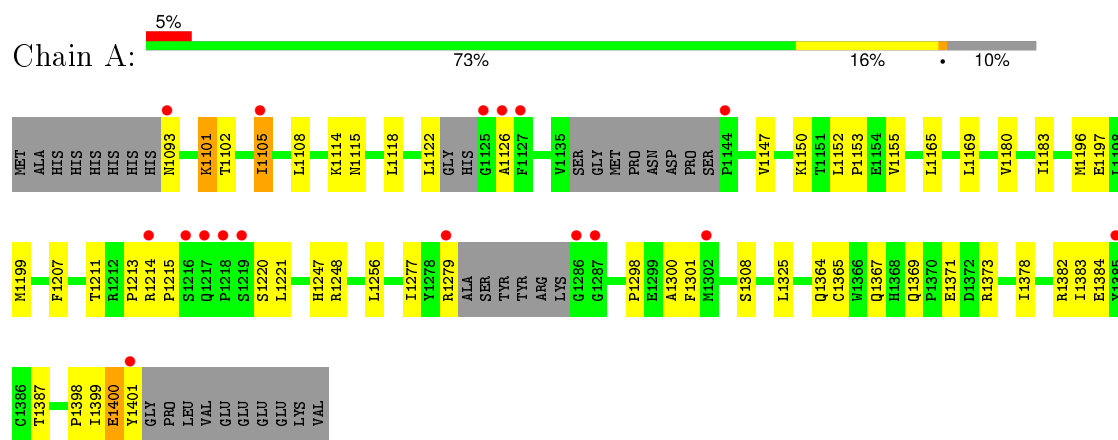


Mol	Chain	Residues	Atoms					ZeroOcc	AltConf	
2	A	1	Total	C	Cl	F	N	O	0	0
			30	21	2	1	5	1		

- Molecule 3 is water.

Mol	Chain	Residues	Atoms		ZeroOcc	AltConf
3	A	237	Total	O	0	0
			237	237		

- Molecule 1: TYROSINE-PROTEIN KINASE RECEPTOR



4 Data and refinement statistics

Property	Value	Source
Space group	P 21 21 21	Depositor
Cell constants a, b, c, α , β , γ	51.72Å 57.17Å 105.25Å 90.00° 90.00° 90.00°	Depositor
Resolution (Å)	36.04 – 1.70 36.04 – 1.57	Depositor EDS
% Data completeness (in resolution range)	99.1 (36.04-1.70) 97.9 (36.04-1.57)	Depositor EDS
R_{merge}	0.05	Depositor
R_{sym}	(Not available)	Depositor
$\langle I/\sigma(I) \rangle$ ¹	1.75 (at 1.58Å)	Xtriage
Refinement program	CNS 2005	Depositor
R, R_{free}	0.208 , 0.234 0.206 , 0.231	Depositor DCC
R_{free} test set	1744 reflections (5.28%)	DCC
Wilson B-factor (Å ²)	21.2	Xtriage
Anisotropy	0.334	Xtriage
Bulk solvent k_{sol} (e/Å ³), B_{sol} (Å ²)	0.37 , 52.5	EDS
Estimated twinning fraction	No twinning to report.	Xtriage
L-test for twinning ²	$\langle L \rangle = 0.45$, $\langle L^2 \rangle = 0.28$	Xtriage
Outliers	0 of 43081 reflections	Xtriage
F_o, F_c correlation	0.95	EDS
Total number of atoms	2567	wwPDB-VP
Average B, all atoms (Å ²)	28.0	wwPDB-VP

Xtriage's analysis on translational NCS is as follows: *The largest off-origin peak in the Patterson function is 6.37% of the height of the origin peak. No significant pseudotranslation is detected.*

¹Intensities estimated from amplitudes.

²Theoretical values of $\langle |L| \rangle$, $\langle L^2 \rangle$ for acentric reflections are 0.5, 0.375 respectively for untwinned datasets, and 0.333, 0.2 for perfectly twinned datasets.

5 Model quality

5.1 Standard geometry

Bond lengths and bond angles in the following residue types are not validated in this section: VGH

The Z score for a bond length (or angle) is the number of standard deviations the observed value is removed from the expected value. A bond length (or angle) with $|Z| > 5$ is considered an outlier worth inspection. RMSZ is the root-mean-square of all Z scores of the bond lengths (or angles).

Mol	Chain	Bond lengths		Bond angles	
		RMSZ	$\# Z > 5$	RMSZ	$\# Z > 5$
1	A	0.26	0/2354	0.44	0/3188

There are no bond length outliers.

There are no bond angle outliers.

There are no chirality outliers.

There are no planarity outliers.

5.2 Too-close contacts

In the following table, the Non-H and H(model) columns list the number of non-hydrogen atoms and hydrogen atoms in the chain respectively. The H(added) column lists the number of hydrogen atoms added and optimized by MolProbity. The Clashes column lists the number of clashes within the asymmetric unit, whereas Symm-Clashes lists symmetry related clashes.

Mol	Chain	Non-H	H(model)	H(added)	Clashes	Symm-Clashes
1	A	2300	0	2282	61	0
2	A	30	0	22	3	0
3	A	237	0	0	5	0
All	All	2567	0	2304	62	0

The all-atom clashscore is defined as the number of clashes found per 1000 atoms (including hydrogen atoms). The all-atom clashscore for this structure is 13.

All (62) close contacts within the same asymmetric unit are listed below, sorted by their clash magnitude.

Atom-1	Atom-2	Interatomic distance (Å)	Clash overlap (Å)
1:A:1101:LYS:HE3	1:A:1102:THR:H	1.27	0.98

Continued on next page...

Continued from previous page...

Atom-1	Atom-2	Interatomic distance (Å)	Clash overlap (Å)
1:A:1101:LYS:HE3	1:A:1102:THR:N	1.96	0.80
1:A:1105:ILE:HD12	1:A:1165:LEU:HD11	1.65	0.79
1:A:1248:ARG:CZ	1:A:1277:ILE:HG21	2.13	0.78
1:A:1105:ILE:HD13	1:A:1105:ILE:N	1.99	0.77
1:A:1214:ARG:HG3	1:A:1215:PRO:HD2	1.70	0.72
1:A:1093:ASN:HB2	1:A:1105:ILE:HG12	1.70	0.72
1:A:1383:ILE:O	1:A:1387:THR:HG23	1.92	0.70
1:A:1105:ILE:HG13	1:A:1165:LEU:HD21	1.75	0.69
1:A:1369:GLN:HB3	1:A:1371:GLU:OE2	1.93	0.68
1:A:1147:VAL:HG12	1:A:1183:ILE:CD1	2.24	0.68
1:A:1364:GLN:HE22	1:A:1382:ARG:NH1	1.93	0.67
1:A:1147:VAL:HG12	1:A:1183:ILE:HD12	1.76	0.67
1:A:1365:CYS:O	1:A:1373:ARG:HD2	2.01	0.61
1:A:1207:PHE:O	1:A:1211:THR:HG22	2.01	0.61
1:A:1197:GLU:HG2	1:A:1199:MET:HE3	1.82	0.60
1:A:1199:MET:HA	1:A:1199:MET:HE2	1.84	0.59
1:A:1105:ILE:CG1	1:A:1165:LEU:HD21	2.33	0.59
1:A:1378:ILE:HG22	1:A:1382:ARG:HE	1.68	0.59
1:A:1165:LEU:O	1:A:1169:LEU:HD13	2.04	0.58
1:A:1114:LYS:HG3	1:A:1115:ASN:ND2	2.19	0.57
1:A:1105:ILE:CD1	1:A:1165:LEU:HD11	2.33	0.57
1:A:1367:GLN:HB2	1:A:1373:ARG:HG2	1.86	0.57
1:A:1220:SER:O	1:A:1221:LEU:HD12	2.07	0.55
1:A:1122:LEU:HD22	2:A:9000:VGH:H92C	1.88	0.55
1:A:1197:GLU:HG2	1:A:1199:MET:CE	2.36	0.54
1:A:1213:PRO:HG2	1:A:1398:PRO:O	2.07	0.54
1:A:1115:ASN:HD22	1:A:1115:ASN:N	2.05	0.54
1:A:1384:GLU:HG2	3:A:2225:HOH:O	2.07	0.54
1:A:1325:LEU:N	1:A:1325:LEU:HD22	2.22	0.54
1:A:1180:VAL:HG21	1:A:1256:LEU:HD12	1.88	0.53
1:A:1155:VAL:O	1:A:1155:VAL:HG23	2.09	0.53
1:A:1093:ASN:HB2	3:A:2035:HOH:O	2.09	0.51
1:A:1199:MET:HA	1:A:1199:MET:CE	2.40	0.51
1:A:1150:LYS:HB2	1:A:1196:MET:HE1	1.93	0.51
1:A:1108:LEU:HD11	1:A:1169:LEU:CD1	2.40	0.50
1:A:1105:ILE:HD12	1:A:1169:LEU:HD11	1.93	0.50
1:A:1378:ILE:CG2	1:A:1382:ARG:HE	2.23	0.50
1:A:1214:ARG:HG3	1:A:1215:PRO:CD	2.39	0.49
1:A:1399:ILE:O	1:A:1401:TYR:N	2.46	0.48
1:A:1371:GLU:H	1:A:1371:GLU:CD	2.17	0.48
1:A:1248:ARG:NH2	1:A:1277:ILE:HG21	2.27	0.48

Continued on next page...

Continued from previous page...

Atom-1	Atom-2	Interatomic distance (Å)	Clash overlap (Å)
1:A:1256:LEU:HD11	2:A:9000:VGH:CL2	2.50	0.48
1:A:1105:ILE:CD1	1:A:1165:LEU:HD21	2.44	0.47
1:A:1247:HIS:O	1:A:1248:ARG:HB2	2.15	0.47
2:A:9000:VGH:CL2	2:A:9000:VGH:H12C	2.53	0.46
1:A:1211:THR:HG23	1:A:1221:LEU:HD22	1.96	0.46
1:A:1308:SER:HA	3:A:2173:HOH:O	2.16	0.45
1:A:1114:LYS:HG3	1:A:1115:ASN:HD22	1.81	0.45
1:A:1248:ARG:CD	1:A:1277:ILE:HG13	2.46	0.45
1:A:1298:PRO:HA	1:A:1301:PHE:CZ	2.52	0.45
1:A:1105:ILE:H	1:A:1105:ILE:HD13	1.77	0.44
1:A:1382:ARG:HD3	3:A:2217:HOH:O	2.17	0.44
1:A:1300:ALA:HB2	3:A:2165:HOH:O	2.16	0.44
1:A:1105:ILE:HD11	1:A:1165:LEU:HD21	2.00	0.42
1:A:1279:ARG:HE	1:A:1279:ARG:HA	1.84	0.42
1:A:1279:ARG:HA	1:A:1279:ARG:NE	2.35	0.41
1:A:1214:ARG:HE	1:A:1215:PRO:HD2	1.86	0.41
1:A:1214:ARG:CZ	1:A:1400:GLU:O	2.70	0.40
1:A:1108:LEU:HD11	1:A:1169:LEU:HD12	2.02	0.40
1:A:1207:PHE:CE2	1:A:1211:THR:HG21	2.57	0.40
1:A:1152:LEU:HD12	1:A:1153:PRO:HD2	2.02	0.40

There are no symmetry-related clashes.

5.3 Torsion angles [i](#)

5.3.1 Protein backbone [i](#)

In the following table, the Percentiles column shows the percent Ramachandran outliers of the chain as a percentile score with respect to all X-ray entries followed by that with respect to entries of similar resolution.

The Analysed column shows the number of residues for which the backbone conformation was analysed, and the total number of residues.

Mol	Chain	Analysed	Favoured	Allowed	Outliers	Percentiles
1	A	285/327 (87%)	279 (98%)	4 (1%)	2 (1%)	26 9

All (2) Ramachandran outliers are listed below:

Mol	Chain	Res	Type
1	A	1400	GLU

Continued on next page...

Continued from previous page...

Mol	Chain	Res	Type
1	A	1126	ALA

5.3.2 Protein sidechains [i](#)

In the following table, the Percentiles column shows the percent sidechain outliers of the chain as a percentile score with respect to all X-ray entries followed by that with respect to entries of similar resolution.

The Analysed column shows the number of residues for which the sidechain conformation was analysed, and the total number of residues.

Mol	Chain	Analysed	Rotameric	Outliers	Percentiles
1	A	255/285 (90%)	252 (99%)	3 (1%)	78 65

All (3) residues with a non-rotameric sidechain are listed below:

Mol	Chain	Res	Type
1	A	1101	LYS
1	A	1105	ILE
1	A	1118	LEU

Some sidechains can be flipped to improve hydrogen bonding and reduce clashes. All (7) such sidechains are listed below:

Mol	Chain	Res	Type
1	A	1093	ASN
1	A	1115	ASN
1	A	1159	GLN
1	A	1188	GLN
1	A	1217	GLN
1	A	1243	ASN
1	A	1364	GLN

5.3.3 RNA [i](#)

There are no RNA molecules in this entry.

5.4 Non-standard residues in protein, DNA, RNA chains [i](#)

There are no non-standard protein/DNA/RNA residues in this entry.

5.5 Carbohydrates [i](#)

There are no carbohydrates in this entry.

5.6 Ligand geometry [i](#)

1 ligand is modelled in this entry.

In the following table, the Counts columns list the number of bonds (or angles) for which Mogul statistics could be retrieved, the number of bonds (or angles) that are observed in the model and the number of bonds (or angles) that are defined in the chemical component dictionary. The Link column lists molecule types, if any, to which the group is linked. The Z score for a bond length (or angle) is the number of standard deviations the observed value is removed from the expected value. A bond length (or angle) with $|Z| > 2$ is considered an outlier worth inspection. RMSZ is the root-mean-square of all Z scores of the bond lengths (or angles).

Mol	Type	Chain	Res	Link	Bond lengths			Bond angles		
					Counts	RMSZ	$\# Z > 2$	Counts	RMSZ	$\# Z > 2$
2	VGH	A	9000	-	31,33,33	2.46	12 (38%)	35,47,47	1.67	6 (17%)

In the following table, the Chirals column lists the number of chiral outliers, the number of chiral centers analysed, the number of these observed in the model and the number defined in the chemical component dictionary. Similar counts are reported in the Torsion and Rings columns. '-' means no outliers of that kind were identified.

Mol	Type	Chain	Res	Link	Chirals	Torsions	Rings
2	VGH	A	9000	-	-	0/12/24/24	0/4/4/4

All (12) bond length outliers are listed below:

Mol	Chain	Res	Type	Atoms	Z	Observed(Å)	Ideal(Å)
2	A	9000	VGH	N24-N26	-5.13	1.29	1.35
2	A	9000	VGH	C6-N24	-2.29	1.29	1.33
2	A	9000	VGH	C2-C12	2.07	1.42	1.38
2	A	9000	VGH	C5-C14	2.35	1.43	1.39
2	A	9000	VGH	O27-C21	2.72	1.47	1.42
2	A	9000	VGH	C17-C21	2.83	1.57	1.52
2	A	9000	VGH	C4-C15	2.90	1.44	1.38
2	A	9000	VGH	C19-N22	2.97	1.41	1.34
2	A	9000	VGH	C13-C17	4.28	1.46	1.39
2	A	9000	VGH	C18-C12	4.82	1.44	1.38
2	A	9000	VGH	C7-N26	4.95	1.41	1.35
2	A	9000	VGH	C18-C17	5.16	1.47	1.39

All (6) bond angle outliers are listed below:

Mol	Chain	Res	Type	Atoms	Z	Observed(°)	Ideal(°)
2	A	9000	VGH	C1-C21-C17	-2.63	110.28	113.35
2	A	9000	VGH	C13-C17-C18	2.26	117.99	114.95
2	A	9000	VGH	C17-C13-CL	2.74	123.28	120.45
2	A	9000	VGH	C17-C18-CL2	3.08	123.07	120.26
2	A	9000	VGH	O27-C21-C17	5.02	114.96	107.38
2	A	9000	VGH	C15-O27-C21	5.12	125.91	117.83

There are no chirality outliers.

There are no torsion outliers.

There are no ring outliers.

1 monomer is involved in 3 short contacts:

Mol	Chain	Res	Type	Clashes	Symm-Clashes
2	A	9000	VGH	3	0

5.7 Other polymers [i](#)

There are no such residues in this entry.

5.8 Polymer linkage issues [i](#)

There are no chain breaks in this entry.

6 Fit of model and data [i](#)

6.1 Protein, DNA and RNA chains [i](#)

In the following table, the column labelled ‘#RSRZ> 2’ contains the number (and percentage) of RSRZ outliers, followed by percent RSRZ outliers for the chain as percentile scores relative to all X-ray entries and entries of similar resolution. The OWAB column contains the minimum, median, 95th percentile and maximum values of the occupancy-weighted average B-factor per residue. The column labelled ‘Q< 0.9’ lists the number of (and percentage) of residues with an average occupancy less than 0.9.

Mol	Chain	Analysed	<RSRZ>	#RSRZ>2	OWAB(Å ²)	Q<0.9
1	A	293/327 (89%)	0.42	17 (5%) 26 28	13, 25, 48, 64	0

All (17) RSRZ outliers are listed below:

Mol	Chain	Res	Type	RSRZ
1	A	1401	TYR	31.2
1	A	1125	GLY	11.0
1	A	1286	GLY	6.6
1	A	1127	PHE	4.8
1	A	1217	GLN	4.8
1	A	1093	ASN	4.3
1	A	1126	ALA	3.5
1	A	1216	SER	3.5
1	A	1219	SER	3.4
1	A	1218	PRO	3.4
1	A	1214	ARG	3.4
1	A	1279	ARG	3.1
1	A	1302	MET	3.1
1	A	1385	TYR	3.0
1	A	1144	PRO	2.9
1	A	1105	ILE	2.1
1	A	1287	GLY	2.0

6.2 Non-standard residues in protein, DNA, RNA chains [i](#)

There are no non-standard protein/DNA/RNA residues in this entry.

6.3 Carbohydrates [i](#)

There are no carbohydrates in this entry.

6.4 Ligands [i](#)

In the following table, the Atoms column lists the number of modelled atoms in the group and the number defined in the chemical component dictionary. LLDF column lists the quality of electron density of the group with respect to its neighbouring residues in protein, DNA or RNA chains. The B-factors column lists the minimum, median, 95th percentile and maximum values of B factors of atoms in the group. The column labelled 'Q< 0.9' lists the number of atoms with occupancy less than 0.9.

Mol	Type	Chain	Res	Atoms	RSCC	RSR	LLDF	B-factors(\AA^2)	Q<0.9
2	VGH	A	9000	30/30	0.82	0.15	2.02	21,31,43,45	0

6.5 Other polymers [i](#)

There are no such residues in this entry.