



Full wwPDB X-ray Structure Validation Report ⓘ

Feb 1, 2016 – 10:37 PM GMT

PDB ID : 4YH6
Title : Crystal structure of IL1RAPL1 ectodomain
Authors : Yamagata, A.; Fukai, S.
Deposited on : 2015-02-27
Resolution : 3.00 Å(reported)

This is a Full wwPDB X-ray Structure Validation Report for a publicly released PDB entry.
We welcome your comments at validation@mail.wwpdb.org
A user guide is available at
<http://wwpdb.org/validation/2016/XrayValidationReportHelp>
with specific help available everywhere you see the ⓘ symbol.

The following versions of software and data (see [references ⓘ](#)) were used in the production of this report:

MolProbity : 4.02b-467
Mogul : 1.7 (RC4), CSD as536be (2015)
Xtriage (Phenix) : 1.9-1692
EDS : rb-20026688
Percentile statistics : 20151230.v01 (using entries in the PDB archive December 30th 2015)
Refmac : 5.8.0135
CCP4 : 6.5.0
Ideal geometry (proteins) : Engh & Huber (2001)
Ideal geometry (DNA, RNA) : Parkinson et al. (1996)
Validation Pipeline (wwPDB-VP) : trunk26865

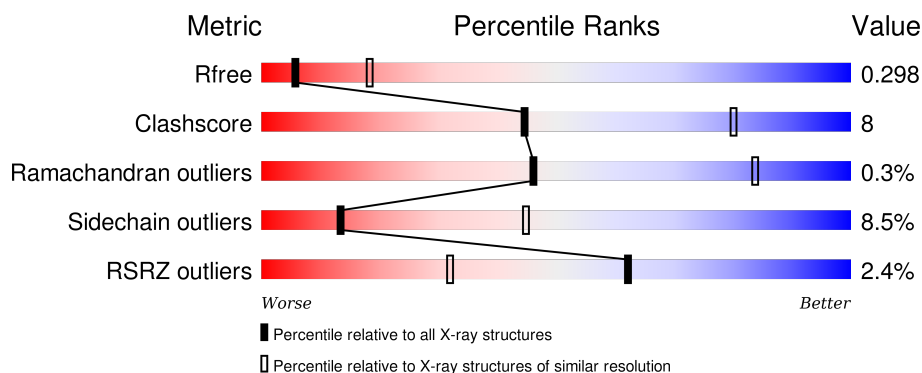
1 Overall quality at a glance ⓘ

The following experimental techniques were used to determine the structure:

X-RAY DIFFRACTION

The reported resolution of this entry is 3.00 Å.

Percentile scores (ranging between 0-100) for global validation metrics of the entry are shown in the following graphic. The table shows the number of entries on which the scores are based.



Metric	Whole archive (#Entries)	Similar resolution (#Entries, resolution range(Å))
R_{free}	91344	1578 (3.00-3.00)
Clashscore	102246	1912 (3.00-3.00)
Ramachandran outliers	100387	1853 (3.00-3.00)
Sidechain outliers	100360	1856 (3.00-3.00)
RSRZ outliers	91569	1592 (3.00-3.00)

The table below summarises the geometric issues observed across the polymeric chains and their fit to the electron density. The red, orange, yellow and green segments on the lower bar indicate the fraction of residues that contain outliers for ≥ 3 , 2, 1 and 0 types of geometric quality criteria. A grey segment represents the fraction of residues that are not modelled. The numeric value for each fraction is indicated below the corresponding segment, with a dot representing fractions $\leq 5\%$. The upper red bar (where present) indicates the fraction of residues that have poor fit to the electron density. The numeric value is given above the bar.

Mol	Chain	Length	Quality of chain
1	A	348	<div> <div>3%</div> <div>66%</div> <div>21%</div> <div>•</div> <div>10%</div> </div>
1	B	348	<div> <div>2%</div> <div>66%</div> <div>20%</div> <div>•</div> <div>12%</div> </div>

2 Entry composition

There are 4 unique types of molecules in this entry. The entry contains 5288 atoms, of which 0 are hydrogens and 0 are deuteriums.

In the tables below, the ZeroOcc column contains the number of atoms modelled with zero occupancy, the AltConf column contains the number of residues with at least one atom in alternate conformation and the Trace column contains the number of residues modelled with at most 2 atoms.

- Molecule 1 is a protein called Interleukin-1 receptor accessory protein-like 1.

Mol	Chain	Residues	Atoms					ZeroOcc	AltConf	Trace
1	A	313	Total	C	N	O	S	0	0	0
			2519	1606	414	483	16			
1	B	305	Total	C	N	O	S	0	0	0
			2444	1557	402	469	16			

There are 28 discrepancies between the modelled and reference sequences:

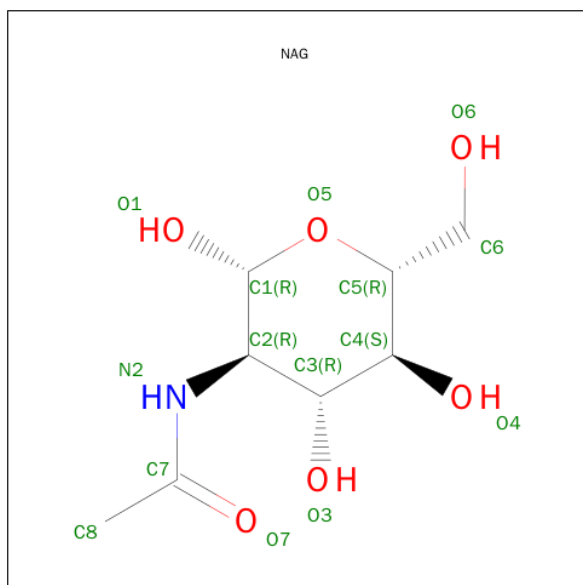
Chain	Residue	Modelled	Actual	Comment	Reference
A	12	ALA	-	expression tag	UNP P59823
A	13	GLN	-	expression tag	UNP P59823
A	14	PRO	-	expression tag	UNP P59823
A	15	ALA	-	expression tag	UNP P59823
A	16	ALA	-	expression tag	UNP P59823
A	17	ARG	-	expression tag	UNP P59823
A	18	ASP	-	expression tag	UNP P59823
A	353	LYS	-	expression tag	UNP P59823
A	354	HIS	-	expression tag	UNP P59823
A	355	HIS	-	expression tag	UNP P59823
A	356	HIS	-	expression tag	UNP P59823
A	357	HIS	-	expression tag	UNP P59823
A	358	HIS	-	expression tag	UNP P59823
A	359	HIS	-	expression tag	UNP P59823
B	12	ALA	-	expression tag	UNP P59823
B	13	GLN	-	expression tag	UNP P59823
B	14	PRO	-	expression tag	UNP P59823
B	15	ALA	-	expression tag	UNP P59823
B	16	ALA	-	expression tag	UNP P59823
B	17	ARG	-	expression tag	UNP P59823
B	18	ASP	-	expression tag	UNP P59823
B	353	LYS	-	expression tag	UNP P59823
B	354	HIS	-	expression tag	UNP P59823
B	355	HIS	-	expression tag	UNP P59823
B	356	HIS	-	expression tag	UNP P59823

Continued on next page...

Continued from previous page...

Chain	Residue	Modelled	Actual	Comment	Reference
B	357	HIS	-	expression tag	UNP P59823
B	358	HIS	-	expression tag	UNP P59823
B	359	HIS	-	expression tag	UNP P59823

- Molecule 2 is N-ACETYL-D-GLUCOSAMINE (three-letter code: NAG) (formula: $C_8H_{15}NO_6$).



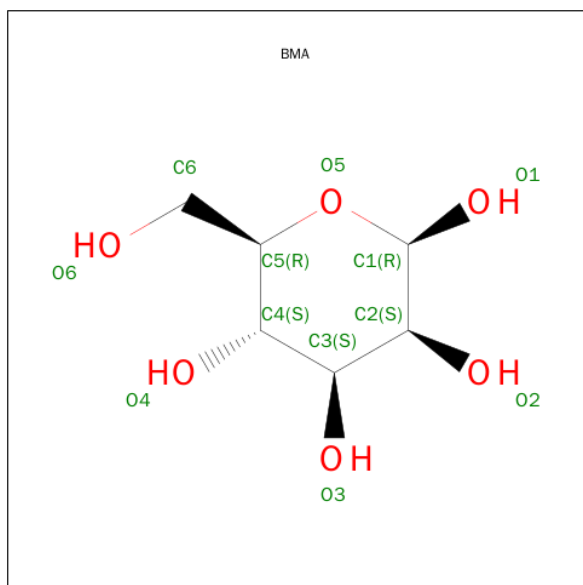
Mol	Chain	Residues	Atoms				ZeroOcc	AltConf
2	A	1	Total	C	N	O	0	0
			14	8	1	5		
2	A	1	Total	C	N	O	0	0
			14	8	1	5		
2	A	1	Total	C	N	O	0	0
			14	8	1	5		
2	A	1	Total	C	N	O	0	0
			14	8	1	5		
2	A	1	Total	C	N	O	0	0
			14	8	1	5		
2	B	1	Total	C	N	O	0	0
			14	8	1	5		
2	B	1	Total	C	N	O	0	0
			14	8	1	5		
2	B	1	Total	C	N	O	0	0
			14	8	1	5		

Continued on next page...

Continued from previous page...

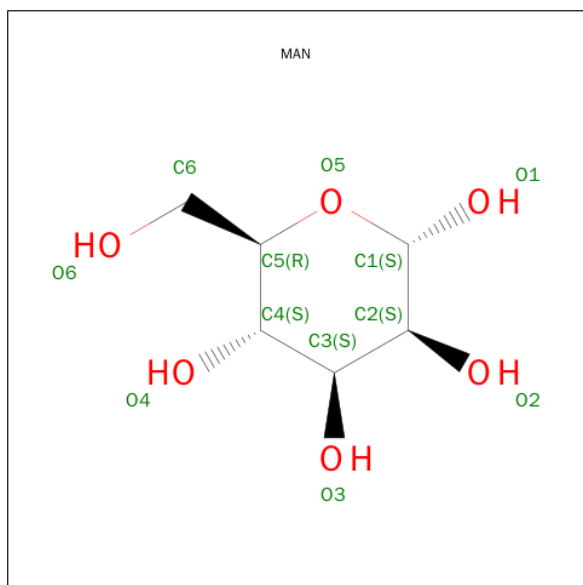
Mol	Chain	Residues	Atoms				ZeroOcc	AltConf
2	B	1	Total	C	N	O	0	0
			14	8	1	5		
2	B	1	Total	C	N	O	0	0
			14	8	1	5		
2	B	1	Total	C	N	O	0	0
			14	8	1	5		

- Molecule 3 is BETA-D-MANNOSE (three-letter code: BMA) (formula: $C_6H_{12}O_6$).



Mol	Chain	Residues	Atoms			ZeroOcc	AltConf
3	A	1	Total	C	O	0	0
			11	6	5		
3	A	1	Total	C	O	0	0
			11	6	5		
3	A	1	Total	C	O	0	0
			11	6	5		
3	B	1	Total	C	O	0	0
			11	6	5		
3	B	1	Total	C	O	0	0
			11	6	5		
3	B	1	Total	C	O	0	0
			11	6	5		

- Molecule 4 is ALPHA-D-MANNOSE (three-letter code: MAN) (formula: $C_6H_{12}O_6$).

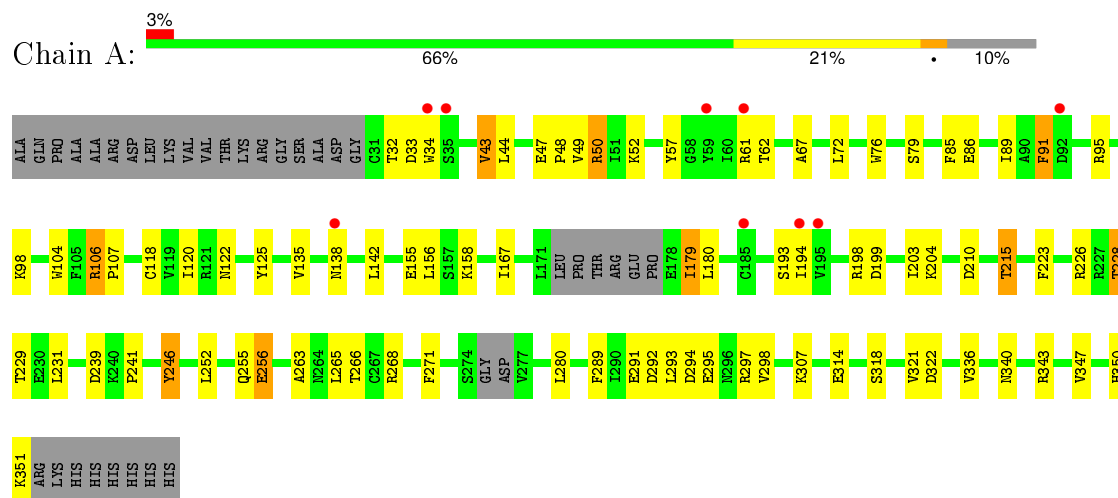


Mol	Chain	Residues	Atoms			ZeroOcc	AltConf
4	A	1	Total	C	O	0	0
			11	6	5		
4	A	1	Total	C	O	0	0
			11	6	5		
4	A	1	Total	C	O	0	0
			11	6	5		
4	A	1	Total	C	O	0	0
			11	6	5		
4	B	1	Total	C	O	0	0
			11	6	5		
4	B	1	Total	C	O	0	0
			11	6	5		
4	B	1	Total	C	O	0	0
			11	6	5		

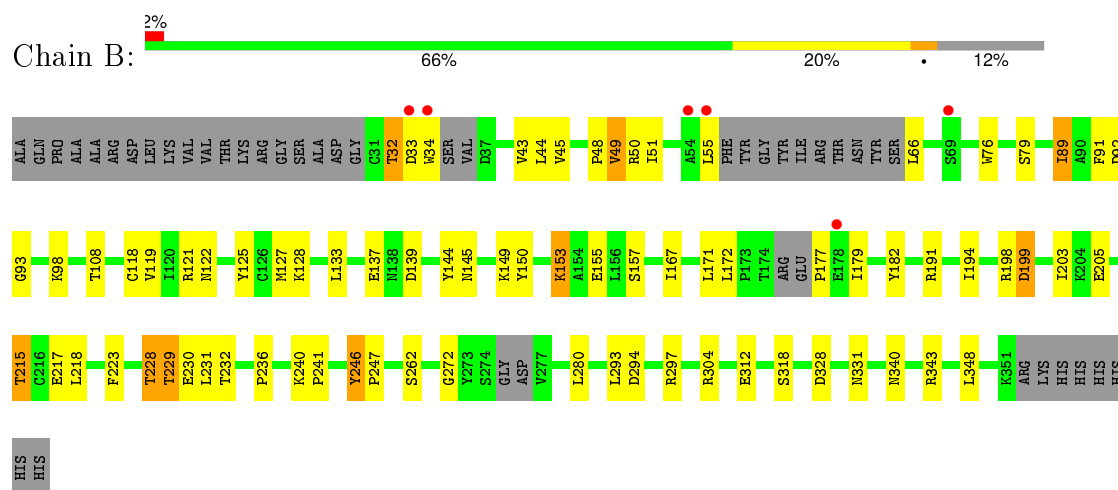
3 Residue-property plots [i](#)

These plots are drawn for all protein, RNA and DNA chains in the entry. The first graphic for a chain summarises the proportions of errors displayed in the second graphic. The second graphic shows the sequence view annotated by issues in geometry and electron density. Residues are color-coded according to the number of geometric quality criteria for which they contain at least one outlier: green = 0, yellow = 1, orange = 2 and red = 3 or more. A red dot above a residue indicates a poor fit to the electron density ($RSRZ > 2$). Stretches of 2 or more consecutive residues without any outlier are shown as a green connector. Residues present in the sample, but not in the model, are shown in grey.

- Molecule 1: Interleukin-1 receptor accessory protein-like 1



- Molecule 1: Interleukin-1 receptor accessory protein-like 1



4 Data and refinement statistics

Property	Value	Source
Space group	P 42 21 2	Depositor
Cell constants a, b, c, α , β , γ	102.45Å 102.45Å 222.71Å 90.00° 90.00° 90.00°	Depositor
Resolution (Å)	40.85 – 3.00 40.85 – 2.90	Depositor EDS
% Data completeness (in resolution range)	97.7 (40.85-3.00) 97.1 (40.85-2.90)	Depositor EDS
R_{merge}	(Not available)	Depositor
R_{sym}	0.12	Depositor
$\langle I/\sigma(I) \rangle$ ¹	1.83 (at 2.90Å)	Xtriage
Refinement program	PHENIX (phenix.refine: 1.9_1692)	Depositor
R, R_{free}	0.263 , 0.298 0.263 , 0.298	Depositor DCC
R_{free} test set	1209 reflections (5.04%)	DCC
Wilson B-factor (Å ²)	46.1	Xtriage
Anisotropy	0.239	Xtriage
Bulk solvent k_{sol} (e/Å ³), B_{sol} (Å ²)	0.27 , 51.6	EDS
Estimated twinning fraction	No twinning to report.	Xtriage
L-test for twinning ²	$\langle L \rangle = 0.38$, $\langle L^2 \rangle = 0.21$	Xtriage
Outliers	0 of 26309 reflections	Xtriage
F_o, F_c correlation	0.82	EDS
Total number of atoms	5288	wwPDB-VP
Average B, all atoms (Å ²)	67.0	wwPDB-VP

Xtriage's analysis on translational NCS is as follows: *The largest off-origin peak in the Patterson function is 4.48% of the height of the origin peak. No significant pseudotranslation is detected.*

¹Intensities estimated from amplitudes.

²Theoretical values of $\langle |L| \rangle$, $\langle L^2 \rangle$ for acentric reflections are 0.5, 0.375 respectively for untwinned datasets, and 0.333, 0.2 for perfectly twinned datasets.

5 Model quality

5.1 Standard geometry

Bond lengths and bond angles in the following residue types are not validated in this section: BMA, NAG, MAN

The Z score for a bond length (or angle) is the number of standard deviations the observed value is removed from the expected value. A bond length (or angle) with $|Z| > 5$ is considered an outlier worth inspection. RMSZ is the root-mean-square of all Z scores of the bond lengths (or angles).

Mol	Chain	Bond lengths		Bond angles	
		RMSZ	$\# Z > 5$	RMSZ	$\# Z > 5$
1	A	0.22	0/2571	0.44	0/3469
1	B	0.23	0/2492	0.43	0/3360
All	All	0.22	0/5063	0.43	0/6829

There are no bond length outliers.

There are no bond angle outliers.

There are no chirality outliers.

There are no planarity outliers.

5.2 Too-close contacts

In the following table, the Non-H and H(model) columns list the number of non-hydrogen atoms and hydrogen atoms in the chain respectively. The H(added) column lists the number of hydrogen atoms added and optimized by MolProbity. The Clashes column lists the number of clashes within the asymmetric unit, whereas Symm-Clashes lists symmetry related clashes.

Mol	Chain	Non-H	H(model)	H(added)	Clashes	Symm-Clashes
1	A	2519	0	2475	38	0
1	B	2444	0	2412	40	0
2	A	98	0	85	3	0
2	B	84	0	72	3	0
3	A	33	0	26	2	0
3	B	33	0	27	0	0
4	A	44	0	40	3	0
4	B	33	0	30	0	0
All	All	5288	0	5167	83	0

The all-atom clashscore is defined as the number of clashes found per 1000 atoms (including hydrogen atoms). The all-atom clashscore for this structure is 8.

All (83) close contacts within the same asymmetric unit are listed below, sorted by their clash magnitude.

Atom-1	Atom-2	Interatomic distance (Å)	Clash overlap (Å)
1:A:295:GLU:HB2	1:A:298:VAL:HG12	1.57	0.86
1:A:79:SER:HB3	1:A:86:GLU:HG3	1.59	0.83
1:B:182:TYR:HB2	1:B:215:THR:HG23	1.74	0.69
1:B:76:TRP:HB2	1:B:89:ILE:HD11	1.75	0.68
1:A:76:TRP:HB2	1:A:89:ILE:HD11	1.79	0.64
1:B:137:GLU:O	1:B:145:ASN:ND2	2.31	0.63
1:B:32:THR:OG1	1:B:127:MET:SD	2.57	0.61
1:A:155:GLU:OE2	1:A:158:LYS:NZ	2.34	0.61
4:A:413:MAN:O2	1:B:92:ASP:OD2	2.20	0.58
2:B:409:NAG:H83	2:B:409:NAG:H3	1.86	0.56
1:A:67:ALA:HB1	1:A:72:LEU:HD12	1.87	0.55
2:B:401:NAG:H3	2:B:401:NAG:H83	1.88	0.55
1:B:331:ASN:HD22	1:B:348:LEU:HD23	1.70	0.55
1:B:150:TYR:HB2	1:B:229:THR:HB	1.88	0.55
1:A:122:ASN:HB3	1:A:125:TYR:H	1.71	0.55
1:A:179:ILE:HD11	1:A:198:ARG:HA	1.88	0.55
1:B:240:LYS:HD3	1:B:241:PRO:HD2	1.88	0.55
1:B:304:ARG:HH22	2:B:409:NAG:H83	1.71	0.54
2:A:401:NAG:O3	2:A:402:NAG:O5	2.21	0.54
1:B:297:ARG:NH1	1:B:328:ASP:OD2	2.38	0.54
1:A:297:ARG:HB3	1:A:322:ASP:O	2.08	0.54
1:B:149:LYS:NZ	1:B:230:GLU:OE1	2.38	0.54
1:A:193:SER:HA	1:A:204:LYS:HE2	1.91	0.52
1:A:215:THR:HB	1:A:228:THR:HB	1.92	0.52
1:B:45:VAL:HA	1:B:108:THR:HG23	1.92	0.51
1:A:256:GLU:HB3	1:A:351:LYS:HG3	1.92	0.51
1:B:241:PRO:HG2	1:B:343:ARG:NH2	2.26	0.50
1:B:44:LEU:HD21	1:B:145:ASN:HB2	1.93	0.50
1:A:241:PRO:HG2	1:A:343:ARG:NH2	2.27	0.50
1:B:48:PRO:HD3	1:B:223:PHE:HB3	1.93	0.50
1:B:182:TYR:HE1	1:B:217:GLU:HB2	1.77	0.50
1:A:33:ASP:OD1	1:A:34:TRP:N	2.45	0.49
1:A:194:ILE:HG13	1:A:203:ILE:HG12	1.94	0.49
1:B:55:LEU:HD11	1:B:127:MET:HB3	1.95	0.49
1:A:307:LYS:HG2	1:A:314:GLU:HB3	1.95	0.48
1:A:226:ARG:NH2	2:A:404:NAG:O7	2.45	0.48
1:B:139:ASP:OD1	1:B:139:ASP:N	2.41	0.48
1:A:291:GLU:O	1:A:294:ASP:HB2	2.12	0.48
1:A:122:ASN:HD22	1:A:125:TYR:HB3	1.79	0.48
1:A:289:PHE:N	1:A:292:ASP:OD2	2.41	0.48

Continued on next page...

Continued from previous page...

Atom-1	Atom-2	Interatomic distance (Å)	Clash overlap (Å)
3:A:407:BMA:H4	4:A:409:MAN:H2	1.97	0.47
1:B:155:GLU:HG2	1:B:236:PRO:HA	1.97	0.47
1:B:179:ILE:HD12	1:B:199:ASP:HA	1.96	0.47
1:A:43:VAL:HG21	1:A:49:VAL:HG21	1.97	0.46
1:A:72:LEU:HB3	1:A:120:ILE:HG22	1.96	0.46
1:B:157:SER:HA	1:B:205:GLU:HG2	1.97	0.46
1:A:271:PHE:CZ	1:A:336:VAL:HG13	2.50	0.46
1:B:194:ILE:HG12	1:B:203:ILE:HG12	1.98	0.46
1:A:263:ALA:HB3	1:A:321:VAL:HB	1.98	0.46
1:B:43:VAL:HG11	1:B:49:VAL:HG21	1.98	0.46
1:B:167:ILE:HD11	1:B:218:LEU:HD22	1.97	0.46
1:A:85:PHE:HA	1:B:153:LYS:NZ	2.32	0.45
2:A:401:NAG:H83	2:A:401:NAG:H3	1.98	0.45
1:A:138:ASN:HB2	1:A:142:LEU:O	2.17	0.45
1:B:91:PHE:CE2	1:B:98:LYS:HE3	2.52	0.45
1:B:51:ILE:HD11	1:B:133:LEU:HD13	1.98	0.45
1:A:246:TYR:O	1:A:268:ARG:N	2.47	0.44
1:A:50:ARG:HD3	1:A:104:TRP:CE2	2.53	0.44
1:A:91:PHE:CE2	1:A:98:LYS:HB2	2.52	0.44
1:B:191:ARG:HG3	1:B:191:ARG:H	1.60	0.44
1:B:119:VAL:HG22	1:B:128:LYS:HB2	1.98	0.44
1:B:76:TRP:CZ3	1:B:118:CYS:HB2	2.52	0.44
1:B:272:GLY:HA2	1:B:312:GLU:HG2	2.00	0.44
1:A:106:ARG:HA	1:A:107:PRO:HA	1.79	0.44
1:B:294:ASP:OD2	1:B:297:ARG:NE	2.51	0.44
1:A:44:LEU:O	1:A:47:GLU:HG2	2.18	0.43
1:B:92:ASP:OD1	1:B:93:GLY:N	2.43	0.43
1:B:43:VAL:HG21	1:B:49:VAL:HG22	2.01	0.43
1:A:265:LEU:HD22	1:A:347:VAL:HG11	2.01	0.43
1:A:52:LYS:HE3	1:A:57:TYR:CZ	2.53	0.42
1:A:266:THR:HA	1:A:318:SER:HA	2.02	0.42
1:B:89:ILE:HG13	1:B:89:ILE:H	1.43	0.42
1:B:144:TYR:HB2	1:B:228:THR:HG21	2.01	0.42
1:B:215:THR:HB	1:B:228:THR:HB	2.01	0.42
1:A:95:ARG:NH1	1:A:107:PRO:O	2.48	0.41
3:A:407:BMA:H3	4:A:408:MAN:H2	1.61	0.41
1:B:33:ASP:OD1	1:B:34:TRP:N	2.54	0.41
1:A:43:VAL:HG23	1:A:135:VAL:HG22	2.01	0.41
1:B:122:ASN:HB3	1:B:125:TYR:H	1.86	0.41
1:A:48:PRO:HD3	1:A:223:PHE:HB3	2.03	0.41
1:A:350:HIS:CG	1:A:351:LYS:H	2.38	0.41

Continued on next page...

Continued from previous page...

Atom-1	Atom-2	Interatomic distance (Å)	Clash overlap (Å)
1:A:76:TRP:CZ3	1:A:118:CYS:HB3	2.56	0.41
1:B:246:TYR:HA	1:B:247:PRO:HA	1.92	0.40

There are no symmetry-related clashes.

5.3 Torsion angles [i](#)

5.3.1 Protein backbone [i](#)

In the following table, the Percentiles column shows the percent Ramachandran outliers of the chain as a percentile score with respect to all X-ray entries followed by that with respect to entries of similar resolution.

The Analysed column shows the number of residues for which the backbone conformation was analysed, and the total number of residues.

Mol	Chain	Analysed	Favoured	Allowed	Outliers	Percentiles	
1	A	307/348 (88%)	293 (95%)	13 (4%)	1 (0%)	46	84
1	B	295/348 (85%)	284 (96%)	10 (3%)	1 (0%)	46	84
All	All	602/696 (86%)	577 (96%)	23 (4%)	2 (0%)	46	84

All (2) Ramachandran outliers are listed below:

Mol	Chain	Res	Type
1	B	198	ARG
1	A	91	PHE

5.3.2 Protein sidechains [i](#)

In the following table, the Percentiles column shows the percent sidechain outliers of the chain as a percentile score with respect to all X-ray entries followed by that with respect to entries of similar resolution.

The Analysed column shows the number of residues for which the sidechain conformation was analysed, and the total number of residues.

Mol	Chain	Analysed	Rotameric	Outliers	Percentiles	
1	A	281/309 (91%)	257 (92%)	24 (8%)	13	45
1	B	274/309 (89%)	251 (92%)	23 (8%)	14	45

Continued on next page...

Continued from previous page...

Mol	Chain	Analysed	Rotameric	Outliers	Percentiles	
All	All	555/618 (90%)	508 (92%)	47 (8%)	13	45

All (47) residues with a non-rotameric sidechain are listed below:

Mol	Chain	Res	Type
1	A	32	THR
1	A	43	VAL
1	A	50	ARG
1	A	61	ARG
1	A	62	THR
1	A	106	ARG
1	A	156	LEU
1	A	167	ILE
1	A	179	ILE
1	A	180	LEU
1	A	199	ASP
1	A	210	ASP
1	A	215	THR
1	A	228	THR
1	A	229	THR
1	A	231	LEU
1	A	239	ASP
1	A	246	TYR
1	A	252	LEU
1	A	255	GLN
1	A	256	GLU
1	A	280	LEU
1	A	293	LEU
1	A	340	ASN
1	B	32	THR
1	B	49	VAL
1	B	50	ARG
1	B	66	LEU
1	B	79	SER
1	B	89	ILE
1	B	121	ARG
1	B	153	LYS
1	B	171	LEU
1	B	172	LEU
1	B	177	PRO
1	B	199	ASP
1	B	215	THR

Continued on next page...

Continued from previous page...

Mol	Chain	Res	Type
1	B	228	THR
1	B	229	THR
1	B	231	LEU
1	B	232	THR
1	B	246	TYR
1	B	262	SER
1	B	280	LEU
1	B	293	LEU
1	B	318	SER
1	B	340	ASN

Some sidechains can be flipped to improve hydrogen bonding and reduce clashes. All (1) such sidechains are listed below:

Mol	Chain	Res	Type
1	B	331	ASN

5.3.3 RNA [i](#)

There are no RNA molecules in this entry.

5.4 Non-standard residues in protein, DNA, RNA chains [i](#)

There are no non-standard protein/DNA/RNA residues in this entry.

5.5 Carbohydrates [i](#)

There are no carbohydrates in this entry.

5.6 Ligand geometry [i](#)

26 ligands are modelled in this entry.

In the following table, the Counts columns list the number of bonds (or angles) for which Mogul statistics could be retrieved, the number of bonds (or angles) that are observed in the model and the number of bonds (or angles) that are defined in the chemical component dictionary. The Link column lists molecule types, if any, to which the group is linked. The Z score for a bond length (or angle) is the number of standard deviations the observed value is removed from the expected value. A bond length (or angle) with $|Z| > 2$ is considered an outlier worth inspection. RMSZ is the root-mean-square of all Z scores of the bond lengths (or angles).

Mol	Type	Chain	Res	Link	Bond lengths			Bond angles		
					Counts	RMSZ	# Z > 2	Counts	RMSZ	# Z > 2
2	NAG	A	401	1,2	14,14,15	0.70	1 (7%)	15,19,21	1.79	2 (13%)
2	NAG	A	402	3,2	14,14,15	0.27	0	15,19,21	0.79	0
3	BMA	A	403	2	11,11,12	0.70	0	14,15,17	0.66	0
2	NAG	A	404	1	14,14,15	0.21	0	15,19,21	0.29	0
2	NAG	A	405	1,2	14,14,15	0.22	0	15,19,21	0.32	0
2	NAG	A	406	3,2	14,14,15	0.24	0	15,19,21	0.27	0
3	BMA	A	407	2,4	11,11,12	0.84	0	14,15,17	0.71	0
4	MAN	A	408	3	11,11,12	1.34	2 (18%)	14,15,17	1.97	4 (28%)
4	MAN	A	409	3	11,11,12	0.79	1 (9%)	14,15,17	0.93	1 (7%)
2	NAG	A	410	1,2	14,14,15	0.27	0	15,19,21	0.37	0
2	NAG	A	411	3,2	14,14,15	0.17	0	15,19,21	0.40	0
3	BMA	A	412	2,4	11,11,12	1.22	2 (18%)	14,15,17	1.35	2 (14%)
4	MAN	A	413	3	11,11,12	0.98	1 (9%)	14,15,17	1.09	1 (7%)
4	MAN	A	414	3	11,11,12	0.81	1 (9%)	14,15,17	1.72	4 (28%)
2	NAG	B	401	1,2	14,14,15	0.50	0	15,19,21	1.30	1 (6%)
2	NAG	B	402	3,2	14,14,15	0.37	0	15,19,21	0.36	0
3	BMA	B	403	2	11,11,12	0.65	0	14,15,17	0.69	0
2	NAG	B	404	1,2	14,14,15	0.47	0	15,19,21	0.34	0
2	NAG	B	405	3,2	14,14,15	0.28	0	15,19,21	0.51	0
3	BMA	B	406	2,4	11,11,12	1.01	1 (9%)	14,15,17	1.99	4 (28%)
4	MAN	B	407	3	11,11,12	0.67	1 (9%)	14,15,17	1.65	4 (28%)
4	MAN	B	408	3	11,11,12	0.75	0	14,15,17	1.25	2 (14%)
2	NAG	B	409	1,2	14,14,15	0.39	0	15,19,21	1.33	1 (6%)
2	NAG	B	410	3,2	14,14,15	0.42	0	15,19,21	0.34	0
3	BMA	B	411	2,4	11,11,12	1.30	2 (18%)	14,15,17	1.31	2 (14%)
4	MAN	B	412	3	11,11,12	0.70	0	14,15,17	1.44	2 (14%)

In the following table, the Chirals column lists the number of chiral outliers, the number of chiral centers analysed, the number of these observed in the model and the number defined in the chemical component dictionary. Similar counts are reported in the Torsion and Rings columns. '-' means no outliers of that kind were identified.

Mol	Type	Chain	Res	Link	Chirals	Torsions	Rings
2	NAG	A	401	1,2	-	0/6/23/26	0/1/1/1
2	NAG	A	402	3,2	-	0/6/23/26	0/1/1/1
3	BMA	A	403	2	-	0/2/19/22	0/1/1/1
2	NAG	A	404	1	-	0/6/23/26	0/1/1/1
2	NAG	A	405	1,2	-	0/6/23/26	0/1/1/1
2	NAG	A	406	3,2	-	0/6/23/26	0/1/1/1
3	BMA	A	407	2,4	-	0/2/19/22	0/1/1/1

Continued on next page...

Continued from previous page...

Mol	Type	Chain	Res	Link	Chirals	Torsions	Rings
4	MAN	A	408	3	-	0/2/19/22	0/1/1/1
4	MAN	A	409	3	-	0/2/19/22	0/1/1/1
2	NAG	A	410	1,2	-	0/6/23/26	0/1/1/1
2	NAG	A	411	3,2	-	0/6/23/26	0/1/1/1
3	BMA	A	412	2,4	-	0/2/19/22	0/1/1/1
4	MAN	A	413	3	-	0/2/19/22	1/1/1/1
4	MAN	A	414	3	-	0/2/19/22	0/1/1/1
2	NAG	B	401	1,2	-	0/6/23/26	0/1/1/1
2	NAG	B	402	3,2	-	0/6/23/26	0/1/1/1
3	BMA	B	403	2	-	0/2/19/22	0/1/1/1
2	NAG	B	404	1,2	-	0/6/23/26	0/1/1/1
2	NAG	B	405	3,2	-	0/6/23/26	0/1/1/1
3	BMA	B	406	2,4	-	0/2/19/22	0/1/1/1
4	MAN	B	407	3	-	0/2/19/22	0/1/1/1
4	MAN	B	408	3	-	0/2/19/22	1/1/1/1
2	NAG	B	409	1,2	-	0/6/23/26	0/1/1/1
2	NAG	B	410	3,2	-	0/6/23/26	0/1/1/1
3	BMA	B	411	2,4	-	0/2/19/22	0/1/1/1
4	MAN	B	412	3	-	0/2/19/22	1/1/1/1

All (12) bond length outliers are listed below:

Mol	Chain	Res	Type	Atoms	Z	Observed(Å)	Ideal(Å)
3	B	411	BMA	O5-C1	-2.44	1.39	1.43
4	A	409	MAN	O5-C1	-2.18	1.40	1.43
4	B	407	MAN	C1-C2	2.02	1.57	1.52
4	A	413	MAN	C1-C2	2.03	1.57	1.52
3	A	412	BMA	C2-C3	2.08	1.55	1.52
3	B	411	BMA	C4-C5	2.33	1.58	1.53
2	A	401	NAG	O5-C1	2.33	1.47	1.43
4	A	414	MAN	C1-C2	2.48	1.58	1.52
3	B	406	BMA	C1-C2	2.54	1.58	1.52
3	A	412	BMA	O3-C3	2.66	1.49	1.43
4	A	408	MAN	C2-C3	2.87	1.56	1.52
4	A	408	MAN	C1-C2	2.99	1.59	1.52

All (30) bond angle outliers are listed below:

Mol	Chain	Res	Type	Atoms	Z	Observed(°)	Ideal(°)
3	B	406	BMA	C3-C4-C5	-2.60	105.66	110.20
4	A	408	MAN	O2-C2-C3	-2.49	105.11	110.12
3	A	412	BMA	C1-C2-C3	-2.28	106.84	109.54

Continued on next page...

Continued from previous page...

Mol	Chain	Res	Type	Atoms	Z	Observed(°)	Ideal(°)
4	B	407	MAN	O2-C2-C3	-2.22	105.66	110.12
4	A	409	MAN	O2-C2-C3	-2.20	105.69	110.12
4	B	408	MAN	O2-C2-C3	-2.19	105.72	110.12
4	A	414	MAN	O2-C2-C3	-2.18	105.73	110.12
4	B	412	MAN	O2-C2-C3	-2.16	105.78	110.12
4	B	407	MAN	C1-C2-C3	2.14	112.07	109.54
3	B	411	BMA	C2-C3-C4	2.27	114.89	111.04
3	B	406	BMA	C1-C2-C3	2.43	112.42	109.54
4	A	414	MAN	C1-C2-C3	2.46	112.45	109.54
4	A	413	MAN	C1-O5-C5	2.78	115.77	112.25
3	B	411	BMA	C3-C4-C5	2.95	115.33	110.20
4	A	408	MAN	C1-O5-C5	2.95	115.99	112.25
4	A	414	MAN	O5-C1-C2	2.98	115.69	110.86
4	B	407	MAN	O5-C1-C2	3.07	115.84	110.86
4	A	408	MAN	O5-C1-C2	3.25	116.12	110.86
4	B	408	MAN	C1-O5-C5	3.42	116.59	112.25
3	B	406	BMA	O5-C1-C2	3.60	116.69	110.86
3	A	412	BMA	O3-C3-C2	3.73	116.73	110.00
4	B	407	MAN	C1-O5-C5	3.80	117.07	112.25
4	B	412	MAN	C1-O5-C5	4.16	117.53	112.25
4	A	414	MAN	C1-O5-C5	4.19	117.56	112.25
2	A	401	NAG	C1-O5-C5	4.60	118.08	112.25
2	B	409	NAG	C2-N2-C7	4.71	129.09	123.04
2	B	401	NAG	C2-N2-C7	4.71	129.09	123.04
3	B	406	BMA	C1-O5-C5	4.71	118.23	112.25
4	A	408	MAN	C1-C2-C3	4.72	115.12	109.54
2	A	401	NAG	C2-N2-C7	4.78	129.19	123.04

There are no chirality outliers.

There are no torsion outliers.

All (3) ring outliers are listed below:

Mol	Chain	Res	Type	Atoms
4	B	408	MAN	C1-C2-C3-C4-C5-O5
4	A	413	MAN	C1-C2-C3-C4-C5-O5
4	B	412	MAN	C1-C2-C3-C4-C5-O5

9 monomers are involved in 9 short contacts:

Mol	Chain	Res	Type	Clashes	Symm-Clashes
2	A	401	NAG	2	0

Continued on next page...

Continued from previous page...

Mol	Chain	Res	Type	Clashes	Symm-Clashes
2	A	402	NAG	1	0
2	A	404	NAG	1	0
3	A	407	BMA	2	0
4	A	408	MAN	1	0
4	A	409	MAN	1	0
4	A	413	MAN	1	0
2	B	401	NAG	1	0
2	B	409	NAG	2	0

5.7 Other polymers [i](#)

There are no such residues in this entry.

5.8 Polymer linkage issues [i](#)

There are no chain breaks in this entry.

6 Fit of model and data [i](#)

6.1 Protein, DNA and RNA chains [i](#)

In the following table, the column labelled ‘#RSRZ> 2’ contains the number (and percentage) of RSRZ outliers, followed by percent RSRZ outliers for the chain as percentile scores relative to all X-ray entries and entries of similar resolution. The OWAB column contains the minimum, median, 95th percentile and maximum values of the occupancy-weighted average B-factor per residue. The column labelled ‘Q< 0.9’ lists the number of (and percentage) of residues with an average occupancy less than 0.9.

Mol	Chain	Analysed	<RSRZ>	#RSRZ>2		OWAB(Å ²)	Q<0.9
1	A	313/348 (89%)	-0.05	9 (2%)	55 26	33, 73, 113, 143	0
1	B	305/348 (87%)	-0.33	6 (1%)	68 39	16, 48, 104, 163	0
All	All	618/696 (88%)	-0.19	15 (2%)	62 32	16, 61, 110, 163	0

All (15) RSRZ outliers are listed below:

Mol	Chain	Res	Type	RSRZ
1	B	34	TRP	4.7
1	B	69	SER	4.2
1	B	55	LEU	3.9
1	A	61	ARG	3.7
1	A	138	ASN	3.2
1	A	185	CYS	3.2
1	A	195	VAL	3.0
1	B	178	GLU	2.7
1	B	33	ASP	2.7
1	A	35	SER	2.7
1	A	59	TYR	2.6
1	A	194	ILE	2.6
1	B	54	ALA	2.1
1	A	34	TRP	2.1
1	A	92	ASP	2.0

6.2 Non-standard residues in protein, DNA, RNA chains [i](#)

There are no non-standard protein/DNA/RNA residues in this entry.

6.3 Carbohydrates [i](#)

There are no carbohydrates in this entry.

6.4 Ligands [i](#)

In the following table, the Atoms column lists the number of modelled atoms in the group and the number defined in the chemical component dictionary. LLDF column lists the quality of electron density of the group with respect to its neighbouring residues in protein, DNA or RNA chains. The B-factors column lists the minimum, median, 95th percentile and maximum values of B factors of atoms in the group. The column labelled 'Q< 0.9' lists the number of atoms with occupancy less than 0.9.

Mol	Type	Chain	Res	Atoms	RSCC	RSR	LLDF	B-factors(Å ²)	Q<0.9
2	NAG	B	409	14/15	0.93	0.19	0.25	13,48,57,58	0
2	NAG	A	410	14/15	0.91	0.23	0.11	48,70,75,76	0
2	NAG	B	401	14/15	0.90	0.15	-0.07	54,67,91,96	0
2	NAG	A	405	14/15	0.90	0.19	-0.15	36,69,79,80	0
2	NAG	B	404	14/15	0.96	0.19	-0.36	6,41,90,98	0
2	NAG	A	401	14/15	0.88	0.22	-0.46	38,60,80,86	0
2	NAG	B	410	14/15	0.87	0.18	-	58,73,93,96	0
4	MAN	B	407	11/12	0.79	0.23	-	78,97,124,134	0
4	MAN	B	408	11/12	0.75	0.33	-	80,122,134,139	0
2	NAG	A	411	14/15	0.91	0.20	-	69,105,122,123	0
3	BMA	A	407	11/12	0.69	0.20	-	129,135,145,147	0
2	NAG	B	405	14/15	0.77	0.23	-	53,87,108,133	0
4	MAN	A	409	11/12	0.76	0.17	-	93,111,116,122	0
2	NAG	B	402	14/15	0.90	0.33	-	68,77,84,87	0
4	MAN	A	413	11/12	0.81	0.35	-	133,142,162,164	0
3	BMA	A	412	11/12	0.90	0.16	-	117,121,127,129	0
4	MAN	B	412	11/12	0.73	0.30	-	98,123,129,131	0
4	MAN	A	414	11/12	0.73	0.47	-	138,143,144,146	0
3	BMA	B	411	11/12	0.87	0.16	-	34,67,110,117	0
3	BMA	A	403	11/12	0.90	0.34	-	95,102,109,109	0
2	NAG	A	402	14/15	0.88	0.28	-	64,96,123,124	0
3	BMA	B	403	11/12	0.82	0.24	-	43,63,85,87	0
4	MAN	A	408	11/12	0.48	0.33	-	122,148,154,157	0
2	NAG	A	406	14/15	0.89	0.17	-	73,100,118,130	0
3	BMA	B	406	11/12	0.79	0.22	-	119,140,147,158	0
2	NAG	A	404	14/15	0.78	0.31	-	107,116,132,133	0

6.5 Other polymers [i](#)

There are no such residues in this entry.