



# Full wwPDB X-ray Structure Validation Report ⓘ

Feb 1, 2016 – 06:57 AM GMT

PDB ID : 2YVL  
Title : Crystal structure of tRNA (m1A58) methyltransferase TrmI from Aquifex aeolicus  
Authors : Yanagisawa, T.; Ishii, R.; Yokoyama, S.; RIKEN Structural Genomics/Proteomics Initiative (RSGI)  
Deposited on : 2007-04-13  
Resolution : 2.20 Å(reported)

This is a Full wwPDB X-ray Structure Validation Report for a publicly released PDB entry.  
We welcome your comments at [validation@mail.wwpdb.org](mailto:validation@mail.wwpdb.org)  
A user guide is available at  
<http://wwpdb.org/validation/2016/XrayValidationReportHelp>  
with specific help available everywhere you see the ⓘ symbol.

---

The following versions of software and data (see [references ⓘ](#)) were used in the production of this report:

MolProbity : 4.02b-467  
Mogul : 1.7 (RC4), CSD as536be (2015)  
Xtriage (Phenix) : 1.9-1692  
EDS : rb-20026688  
Percentile statistics : 20151230.v01 (using entries in the PDB archive December 30th 2015)  
Refmac : 5.8.0135  
CCP4 : 6.5.0  
Ideal geometry (proteins) : Engh & Huber (2001)  
Ideal geometry (DNA, RNA) : Parkinson et al. (1996)  
Validation Pipeline (wwPDB-VP) : trunk26865

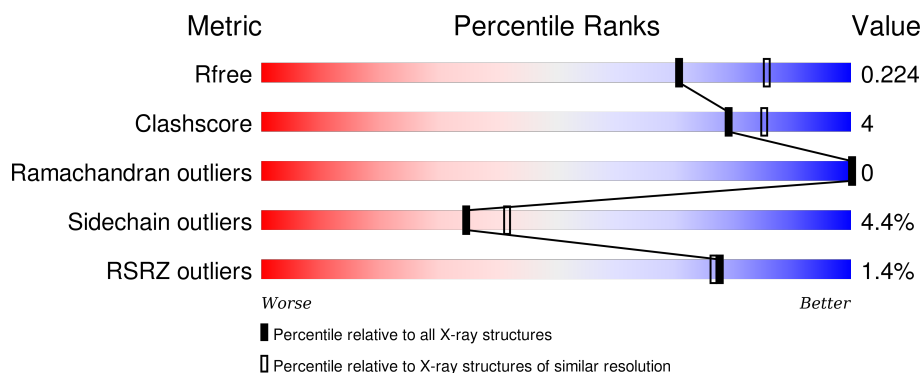
# 1 Overall quality at a glance

The following experimental techniques were used to determine the structure:

## *X-RAY DIFFRACTION*





The reported resolution of this entry is 2.20 Å.

Percentile scores (ranging between 0-100) for global validation metrics of the entry are shown in the following graphic. The table shows the number of entries on which the scores are based.



Metric	Whole archive (#Entries)	Similar resolution (#Entries, resolution range(Å))
$R_{free}$	91344	3774 (2.20-2.20)
Clashscore	102246	4477 (2.20-2.20)
Ramachandran outliers	100387	4404 (2.20-2.20)
Sidechain outliers	100360	4405 (2.20-2.20)
RSRZ outliers	91569	3781 (2.20-2.20)

The table below summarises the geometric issues observed across the polymeric chains and their fit to the electron density. The red, orange, yellow and green segments on the lower bar indicate the fraction of residues that contain outliers for  $\geq 3$ , 2, 1 and 0 types of geometric quality criteria. A grey segment represents the fraction of residues that are not modelled. The numeric value for each fraction is indicated below the corresponding segment, with a dot representing fractions  $\leq 5\%$ . The upper red bar (where present) indicates the fraction of residues that have poor fit to the electron density. The numeric value is given above the bar.

Mol	Chain	Length	Quality of chain
1	A	248	 89% 10% •
1	B	248	 92% 7% •
1	C	248	 2% 88% 11% •
1	D	248	 3% 84% 13% •

## 2 Entry composition [i](#)

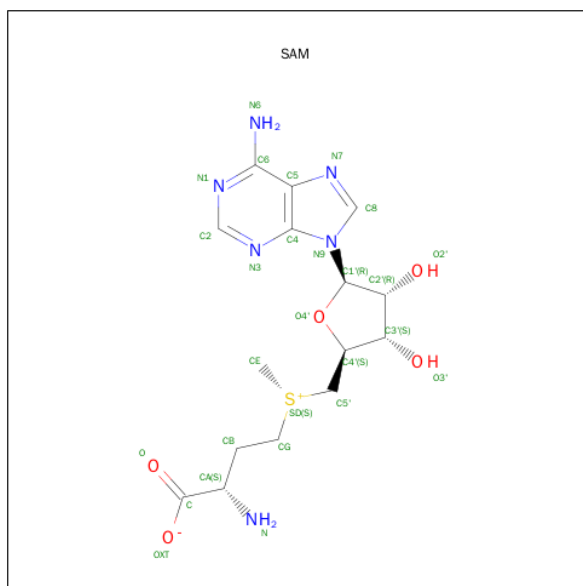
There are 3 unique types of molecules in this entry. The entry contains 8737 atoms, of which 0 are hydrogens and 0 are deuteriums.

In the tables below, the ZeroOcc column contains the number of atoms modelled with zero occupancy, the AltConf column contains the number of residues with at least one atom in alternate conformation and the Trace column contains the number of residues modelled with at most 2 atoms.

- Molecule 1 is a protein called Hypothetical protein.

Mol	Chain	Residues	Atoms					ZeroOcc	AltConf	Trace
1	A	247	Total	C	N	O	S	0	0	0
			2023	1328	335	358	2			
1	B	247	Total	C	N	O	S	0	0	0
			2023	1328	335	358	2			
1	C	247	Total	C	N	O	S	0	0	0
			2023	1328	335	358	2			
1	D	247	Total	C	N	O	S	0	0	0
			2023	1328	335	358	2			

- Molecule 2 is S-ADENOSYLMETHIONINE (three-letter code: SAM) (formula: C<sub>15</sub>H<sub>22</sub>N<sub>6</sub>O<sub>5</sub>S).



Mol	Chain	Residues	Atoms					ZeroOcc	AltConf
2	A	1	Total	C	N	O	S	0	0
			27	15	6	5	1		
2	B	1	Total	C	N	O	S	0	0
			27	15	6	5	1		

*Continued on next page...*

*Continued from previous page...*

Mol	Chain	Residues	Atoms					ZeroOcc	AltConf
2	C	1	Total	C	N	O	S	0	0
			27	15	6	5	1		
2	D	1	Total	C	N	O	S	0	0
			27	15	6	5	1		

- Molecule 3 is water.

Mol	Chain	Residues	Atoms		ZeroOcc	AltConf
3	A	146	Total	O	0	0
			146	146		
3	B	150	Total	O	0	0
			150	150		
3	C	134	Total	O	0	0
			134	134		
3	D	107	Total	O	0	0
			107	107		

### 3 Residue-property plots [i](#)

These plots are drawn for all protein, RNA and DNA chains in the entry. The first graphic for a chain summarises the proportions of errors displayed in the second graphic. The second graphic shows the sequence view annotated by issues in geometry and electron density. Residues are color-coded according to the number of geometric quality criteria for which they contain at least one outlier: green = 0, yellow = 1, orange = 2 and red = 3 or more. A red dot above a residue indicates a poor fit to the electron density ( $RSRZ > 2$ ). Stretches of 2 or more consecutive residues without any outlier are shown as a green connector. Residues present in the sample, but not in the model, are shown in grey.

- Molecule 1: Hypothetical protein

Chain A: 




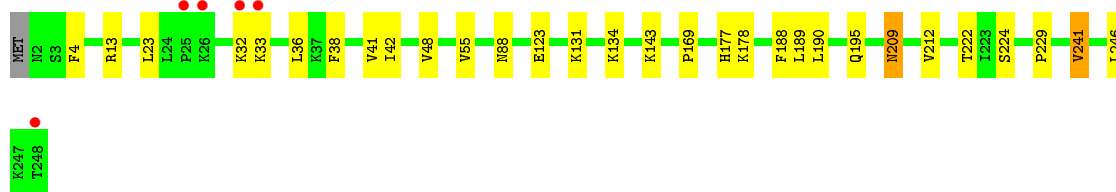
- Molecule 1: Hypothetical protein

Chain B: 




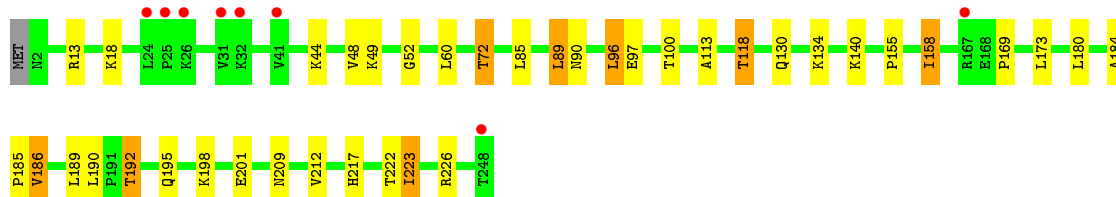
- Molecule 1: Hypothetical protein

Chain C: 



- Molecule 1: Hypothetical protein

Chain D: 



## 4 Data and refinement statistics

Property	Value	Source
Space group	P 21 21 21	Depositor
Cell constants a, b, c, $\alpha$ , $\beta$ , $\gamma$	69.83Å 97.24Å 212.69Å 90.00° 90.00° 90.00°	Depositor
Resolution (Å)	49.75 – 2.20 49.75 – 2.20	Depositor EDS
% Data completeness (in resolution range)	96.8 (49.75-2.20) 96.8 (49.75-2.20)	Depositor EDS
$R_{merge}$	(Not available)	Depositor
$R_{sym}$	0.07	Depositor
$\langle I/\sigma(I) \rangle$ <sup>1</sup>	3.73 (at 2.20Å)	Xtriage
Refinement program	REFMAC 5.2.0019	Depositor
R, $R_{free}$	0.194 , 0.230 0.189 , 0.224	Depositor DCC
$R_{free}$ test set	3597 reflections (5.26%)	DCC
Wilson B-factor (Å <sup>2</sup> )	29.7	Xtriage
Anisotropy	0.128	Xtriage
Bulk solvent $k_{sol}$ (e/Å <sup>3</sup> ), $B_{sol}$ (Å <sup>2</sup> )	0.33 , 39.1	EDS
Estimated twinning fraction	No twinning to report.	Xtriage
L-test for twinning <sup>2</sup>	$\langle  L  \rangle = 0.46$ , $\langle L^2 \rangle = 0.29$	Xtriage
Outliers	1 of 71970 reflections (0.001%)	Xtriage
$F_o, F_c$ correlation	0.94	EDS
Total number of atoms	8737	wwPDB-VP
Average B, all atoms (Å <sup>2</sup> )	27.0	wwPDB-VP

Xtriage's analysis on translational NCS is as follows: *The largest off-origin peak in the Patterson function is 5.91% of the height of the origin peak. No significant pseudotranslation is detected.*

<sup>1</sup>Intensities estimated from amplitudes.

<sup>2</sup>Theoretical values of  $\langle |L| \rangle$ ,  $\langle L^2 \rangle$  for acentric reflections are 0.5, 0.375 respectively for untwinned datasets, and 0.333, 0.2 for perfectly twinned datasets.

## 5 Model quality [i](#)

### 5.1 Standard geometry [i](#)

Bond lengths and bond angles in the following residue types are not validated in this section: SAM

The Z score for a bond length (or angle) is the number of standard deviations the observed value is removed from the expected value. A bond length (or angle) with  $|Z| > 5$  is considered an outlier worth inspection. RMSZ is the root-mean-square of all Z scores of the bond lengths (or angles).

Mol	Chain	Bond lengths		Bond angles	
		RMSZ	# Z  >5	RMSZ	# Z  >5
1	A	0.42	0/2070	0.54	0/2784
1	B	0.44	0/2070	0.55	0/2784
1	C	0.41	0/2070	0.53	0/2784
1	D	0.43	0/2070	0.57	2/2784 (0.1%)
All	All	0.43	0/8280	0.55	2/11136 (0.0%)

There are no bond length outliers.

All (2) bond angle outliers are listed below:

Mol	Chain	Res	Type	Atoms	Z	Observed(°)	Ideal(°)
1	D	72	THR	CA-CB-CG2	6.57	121.59	112.40
1	D	96	LEU	CA-CB-CG	5.12	127.07	115.30

There are no chirality outliers.

There are no planarity outliers.

### 5.2 Too-close contacts [i](#)

In the following table, the Non-H and H(model) columns list the number of non-hydrogen atoms and hydrogen atoms in the chain respectively. The H(added) column lists the number of hydrogen atoms added and optimized by MolProbity. The Clashes column lists the number of clashes within the asymmetric unit, whereas Symm-Clashes lists symmetry related clashes.

Mol	Chain	Non-H	H(model)	H(added)	Clashes	Symm-Clashes
1	A	2023	0	2073	13	0
1	B	2023	0	2073	12	0
1	C	2023	0	2073	19	0
1	D	2023	0	2073	25	0
2	A	27	0	22	0	0

*Continued on next page...*

*Continued from previous page...*

Mol	Chain	Non-H	H(model)	H(added)	Clashes	Symm-Clashes
2	B	27	0	22	0	0
2	C	27	0	22	0	0
2	D	27	0	22	0	0
3	A	146	0	0	0	0
3	B	150	0	0	1	0
3	C	134	0	0	1	0
3	D	107	0	0	0	0
All	All	8737	0	8380	58	0

The all-atom clashscore is defined as the number of clashes found per 1000 atoms (including hydrogen atoms). The all-atom clashscore for this structure is 4.

All (58) close contacts within the same asymmetric unit are listed below, sorted by their clash magnitude.

Atom-1	Atom-2	Interatomic distance (Å)	Clash overlap (Å)
3:B:658:HOH:O	1:D:192:THR:HG21	1.81	0.79
1:A:224:SER:OG	1:B:201:GLU:HG3	1.82	0.78
1:B:141:ASN:HD22	1:B:141:ASN:H	1.35	0.75
1:C:224:SER:OG	1:D:201:GLU:HG3	1.88	0.72
1:C:13:ARG:HD2	1:D:209:ASN:HA	1.73	0.70
1:D:192:THR:HG22	1:D:195:GLN:H	1.59	0.67
1:D:97:GLU:OE2	1:D:118:THR:CG2	2.43	0.66
1:C:4:PHE:CE1	1:C:55:VAL:HG23	2.34	0.63
1:D:100:THR:HG23	1:D:118:THR:HG21	1.81	0.62
1:C:188:PHE:HB2	1:C:241:VAL:HG13	1.89	0.55
1:D:97:GLU:OE2	1:D:118:THR:HG23	2.06	0.55
1:A:212:VAL:HG23	1:B:222:THR:HG22	1.90	0.54
1:A:17:LYS:HD2	1:A:19:PHE:CZ	2.43	0.54
1:C:222:THR:HG22	1:D:212:VAL:HG23	1.89	0.54
1:C:212:VAL:HG22	1:C:241:VAL:HB	1.90	0.53
1:D:44:LYS:HB3	1:D:48:VAL:HG11	1.90	0.53
1:D:223:ILE:HD13	1:D:226:ARG:H	1.74	0.52
1:A:190:LEU:HD22	1:A:195:GLN:HB3	1.93	0.51
1:C:190:LEU:HD22	1:C:195:GLN:HB3	1.92	0.51
1:B:2:ASN:N	1:B:2:ASN:HD22	2.09	0.50
1:C:32:LYS:O	1:C:33:LYS:HB3	2.12	0.49
1:A:222:THR:HG22	1:B:212:VAL:HG23	1.92	0.49
1:C:88:ASN:ND2	1:D:60:LEU:H	2.12	0.47
1:D:89:LEU:HG	1:D:113:ALA:HB2	1.96	0.47
1:B:40:GLU:O	1:B:44:LYS:HD2	2.15	0.46
1:A:94:ARG:HG3	1:A:115:GLU:HG3	1.97	0.46

*Continued on next page...*



*Continued from previous page...*

Atom-1	Atom-2	Interatomic distance (Å)	Clash overlap (Å)
1:D:155:PRO:HB2	1:D:158:ILE:HG12	1.98	0.46
1:C:209:ASN:HD22	1:D:13:ARG:HH21	1.64	0.45
1:D:130:GLN:O	1:D:134:LYS:HG2	2.16	0.45
3:C:640:HOH:O	1:D:90:ASN:HB2	2.16	0.45
1:A:90:ASN:OD1	1:A:92:GLU:HG2	2.17	0.45
1:D:169:PRO:HG3	1:D:190:LEU:HD21	1.99	0.45
1:B:141:ASN:HD22	1:B:141:ASN:N	2.03	0.44
1:C:169:PRO:HG3	1:C:190:LEU:HD21	2.00	0.44
1:D:97:GLU:HB3	1:D:118:THR:HG23	1.99	0.44
1:B:17:LYS:HG2	1:B:19:PHE:CZ	2.53	0.44
1:B:184:ALA:HA	1:B:185:PRO:HD3	1.86	0.44
1:C:48:VAL:HG12	1:C:55:VAL:HG22	2.00	0.43
1:A:44:LYS:HB3	1:A:48:VAL:HG11	1.99	0.43
1:B:141:ASN:H	1:B:141:ASN:ND2	2.09	0.43
1:D:184:ALA:HA	1:D:185:PRO:HD3	1.91	0.43
1:A:184:ALA:HA	1:A:185:PRO:HD3	1.92	0.43
1:D:180:LEU:HD11	1:D:186:VAL:HG13	2.01	0.43
1:C:209:ASN:HD21	1:D:18:LYS:HE2	1.84	0.43
1:C:212:VAL:HG23	1:D:222:THR:HG22	2.00	0.43
1:A:75:ILE:HG12	1:A:189:LEU:HD13	2.00	0.42
1:D:49:LYS:HE2	1:D:52:GLY:HA2	2.00	0.42
1:C:38:PHE:O	1:C:42:ILE:HG12	2.19	0.42
1:D:192:THR:HB	1:D:195:GLN:OE1	2.20	0.42
1:A:77:PRO:HA	1:A:80:SER:OG	2.20	0.42
1:B:25:PRO:O	1:B:26:LYS:HB2	2.21	0.41
1:C:131:LYS:HE2	1:C:131:LYS:HB3	1.81	0.41
1:B:75:ILE:HG12	1:B:189:LEU:HD13	2.03	0.41
1:A:236:HIS:HB2	1:C:229:PRO:HB2	2.03	0.41
1:C:177:HIS:HE1	1:C:246:LEU:O	2.04	0.41
1:A:95:VAL:HG13	1:A:116:VAL:HG13	2.03	0.40
1:D:190:LEU:HD22	1:D:195:GLN:HB3	2.04	0.40
1:C:38:PHE:O	1:C:41:VAL:HG22	2.22	0.40

There are no symmetry-related clashes.

## 5.3 Torsion angles [i](#)

### 5.3.1 Protein backbone [i](#)

In the following table, the Percentiles column shows the percent Ramachandran outliers of the chain as a percentile score with respect to all X-ray entries followed by that with respect to entries

of similar resolution.

The Analysed column shows the number of residues for which the backbone conformation was analysed, and the total number of residues.

Mol	Chain	Analysed	Favoured	Allowed	Outliers	Percentiles	
1	A	245/248 (99%)	244 (100%)	1 (0%)	0	100	100
1	B	245/248 (99%)	241 (98%)	4 (2%)	0	100	100
1	C	245/248 (99%)	241 (98%)	4 (2%)	0	100	100
1	D	245/248 (99%)	240 (98%)	5 (2%)	0	100	100
All	All	980/992 (99%)	966 (99%)	14 (1%)	0	100	100

There are no Ramachandran outliers to report.

### 5.3.2 Protein sidechains ⓘ

In the following table, the Percentiles column shows the percent sidechain outliers of the chain as a percentile score with respect to all X-ray entries followed by that with respect to entries of similar resolution.

The Analysed column shows the number of residues for which the sidechain conformation was analysed, and the total number of residues.

Mol	Chain	Analysed	Rotameric	Outliers	Percentiles	
1	A	218/219 (100%)	211 (97%)	7 (3%)	46	57
1	B	218/219 (100%)	210 (96%)	8 (4%)	41	50
1	C	218/219 (100%)	209 (96%)	9 (4%)	37	45
1	D	218/219 (100%)	204 (94%)	14 (6%)	22	24
All	All	872/876 (100%)	834 (96%)	38 (4%)	35	42

All (38) residues with a non-rotameric sidechain are listed below:

Mol	Chain	Res	Type
1	A	17	LYS
1	A	48	VAL
1	A	65	LEU
1	A	123	GLU
1	A	153	GLU
1	A	173	LEU
1	A	247	LYS
1	B	2	ASN

*Continued on next page...*

*Continued from previous page...*

Mol	Chain	Res	Type
1	B	24	LEU
1	B	65	LEU
1	B	141	ASN
1	B	154	VAL
1	B	178	LYS
1	B	182	GLU
1	B	189	LEU
1	C	23	LEU
1	C	36	LEU
1	C	123	GLU
1	C	134	LYS
1	C	143	LYS
1	C	178	LYS
1	C	189	LEU
1	C	209	ASN
1	C	241	VAL
1	D	72	THR
1	D	85	LEU
1	D	89	LEU
1	D	96	LEU
1	D	118	THR
1	D	140	LYS
1	D	158	ILE
1	D	173	LEU
1	D	186	VAL
1	D	189	LEU
1	D	192	THR
1	D	198	LYS
1	D	217	HIS
1	D	223	ILE

Some sidechains can be flipped to improve hydrogen bonding and reduce clashes. All (10) such sidechains are listed below:

Mol	Chain	Res	Type
1	A	137	ASN
1	A	177	HIS
1	B	141	ASN
1	B	177	HIS
1	C	88	ASN
1	C	177	HIS
1	C	209	ASN
1	D	51	ASN

*Continued on next page...*

*Continued from previous page...*

Mol	Chain	Res	Type
1	D	137	ASN
1	D	217	HIS

### 5.3.3 RNA ⓘ

There are no RNA molecules in this entry.

## 5.4 Non-standard residues in protein, DNA, RNA chains ⓘ

There are no non-standard protein/DNA/RNA residues in this entry.

## 5.5 Carbohydrates ⓘ

There are no carbohydrates in this entry.

## 5.6 Ligand geometry ⓘ

4 ligands are modelled in this entry.

In the following table, the Counts columns list the number of bonds (or angles) for which Mogul statistics could be retrieved, the number of bonds (or angles) that are observed in the model and the number of bonds (or angles) that are defined in the chemical component dictionary. The Link column lists molecule types, if any, to which the group is linked. The Z score for a bond length (or angle) is the number of standard deviations the observed value is removed from the expected value. A bond length (or angle) with  $|Z| > 2$  is considered an outlier worth inspection. RMSZ is the root-mean-square of all Z scores of the bond lengths (or angles).

Mol	Type	Chain	Res	Link	Bond lengths			Bond angles		
					Counts	RMSZ	$\# Z  > 2$	Counts	RMSZ	$\# Z  > 2$
2	SAM	A	601	-	21,29,29	1.11	2 (9%)	17,42,42	3.32	2 (11%)
2	SAM	B	602	-	21,29,29	1.14	2 (9%)	17,42,42	3.07	1 (5%)
2	SAM	C	604	-	21,29,29	1.14	2 (9%)	17,42,42	3.06	2 (11%)
2	SAM	D	603	-	21,29,29	1.15	2 (9%)	17,42,42	3.15	1 (5%)

In the following table, the Chirals column lists the number of chiral outliers, the number of chiral centers analysed, the number of these observed in the model and the number defined in the chemical component dictionary. Similar counts are reported in the Torsion and Rings columns. '-' means no outliers of that kind were identified.

Mol	Type	Chain	Res	Link	Chirals	Torsions	Rings
2	SAM	A	601	-	-	0/8/33/33	0/3/3/3
2	SAM	B	602	-	-	0/8/33/33	0/3/3/3
2	SAM	C	604	-	-	0/8/33/33	0/3/3/3
2	SAM	D	603	-	-	0/8/33/33	0/3/3/3

All (8) bond length outliers are listed below:

Mol	Chain	Res	Type	Atoms	Z	Observed(Å)	Ideal(Å)
2	A	601	SAM	C2-N1	2.32	1.38	1.33
2	B	602	SAM	C2-N1	2.38	1.38	1.33
2	C	604	SAM	C2-N1	2.50	1.38	1.33
2	D	603	SAM	C2-N1	2.65	1.38	1.33
2	A	601	SAM	C2-N3	3.65	1.38	1.32
2	D	603	SAM	C2-N3	3.73	1.38	1.32
2	C	604	SAM	C2-N3	3.74	1.38	1.32
2	B	602	SAM	C2-N3	3.89	1.39	1.32

All (6) bond angle outliers are listed below:

Mol	Chain	Res	Type	Atoms	Z	Observed(°)	Ideal(°)
2	A	601	SAM	N3-C2-N1	-12.83	119.07	128.89
2	D	603	SAM	N3-C2-N1	-12.53	119.30	128.89
2	B	602	SAM	N3-C2-N1	-12.00	119.71	128.89
2	C	604	SAM	N3-C2-N1	-11.88	119.80	128.89
2	C	604	SAM	C1'-N9-C4	-2.08	123.80	126.94
2	A	601	SAM	C2'-C1'-N9	2.74	118.48	114.29

There are no chirality outliers.

There are no torsion outliers.

There are no ring outliers.

No monomer is involved in short contacts.

## 5.7 Other polymers ⓘ

There are no such residues in this entry.

## 5.8 Polymer linkage issues ⓘ

There are no chain breaks in this entry.

## 6 Fit of model and data [i](#)

### 6.1 Protein, DNA and RNA chains [i](#)

In the following table, the column labelled ‘#RSRZ> 2’ contains the number (and percentage) of RSRZ outliers, followed by percent RSRZ outliers for the chain as percentile scores relative to all X-ray entries and entries of similar resolution. The OWAB column contains the minimum, median, 95<sup>th</sup> percentile and maximum values of the occupancy-weighted average B-factor per residue. The column labelled ‘Q< 0.9’ lists the number of (and percentage) of residues with an average occupancy less than 0.9.

Mol	Chain	Analysed	<RSRZ>	#RSRZ>2	OWAB(Å <sup>2</sup> )	Q<0.9
1	A	247/248 (99%)	-0.40	1 (0%) 93 93	13, 22, 35, 47	0
1	B	247/248 (99%)	-0.46	0 100 100	14, 22, 34, 45	0
1	C	247/248 (99%)	-0.26	5 (2%) 68 67	14, 25, 51, 67	0
1	D	247/248 (99%)	-0.14	8 (3%) 51 50	16, 26, 67, 76	0
All	All	988/992 (99%)	-0.32	14 (1%) 78 77	13, 24, 48, 76	0

All (14) RSRZ outliers are listed below:

Mol	Chain	Res	Type	RSRZ
1	C	33	LYS	4.1
1	A	153	GLU	4.0
1	D	24	LEU	3.9
1	D	25	PRO	3.8
1	D	32	LYS	3.7
1	D	26	LYS	3.4
1	D	31	VAL	3.3
1	C	26	LYS	3.2
1	D	248	THR	3.1
1	C	248	THR	3.0
1	C	32	LYS	2.3
1	D	167	ARG	2.2
1	D	41	VAL	2.2
1	C	25	PRO	2.2

### 6.2 Non-standard residues in protein, DNA, RNA chains [i](#)

There are no non-standard protein/DNA/RNA residues in this entry.

### 6.3 Carbohydrates [i](#)

There are no carbohydrates in this entry.

### 6.4 Ligands [i](#)

In the following table, the Atoms column lists the number of modelled atoms in the group and the number defined in the chemical component dictionary. LLDF column lists the quality of electron density of the group with respect to its neighbouring residues in protein, DNA or RNA chains. The B-factors column lists the minimum, median, 95<sup>th</sup> percentile and maximum values of B factors of atoms in the group. The column labelled 'Q< 0.9' lists the number of atoms with occupancy less than 0.9.

Mol	Type	Chain	Res	Atoms	RSCC	RSR	LLDF	B-factors( $\text{\AA}^2$ )	Q<0.9
2	SAM	C	604	27/27	0.91	0.13	1.34	32,38,40,41	0
2	SAM	D	603	27/27	0.93	0.14	0.81	32,37,38,39	0
2	SAM	B	602	27/27	0.94	0.12	0.70	24,26,30,31	0
2	SAM	A	601	27/27	0.93	0.12	0.37	22,25,29,30	0

### 6.5 Other polymers [i](#)

There are no such residues in this entry.