



# Full wwPDB X-ray Structure Validation Report ⓘ

Jan 31, 2016 – 11:53 PM GMT

PDB ID : 1YY4  
Title : Crystal structure of estrogen receptor beta complexed with 1-chloro-6-(4-hydroxy-phenyl)-naphthalen-2-ol  
Authors : Mewshaw, R.E.; Edsall Jr., R.J.; Yang, C.; Manas, E.S.; Xu, Z.B.; Henderson, R.A.; Keith Jr., J.C.; Harris, H.A.  
Deposited on : 2005-02-23  
Resolution : 2.70 Å(reported)

This is a Full wwPDB X-ray Structure Validation Report for a publicly released PDB entry.  
We welcome your comments at [validation@mail.wwpdb.org](mailto:validation@mail.wwpdb.org)  
A user guide is available at  
<http://wwpdb.org/validation/2016/XrayValidationReportHelp>  
with specific help available everywhere you see the ⓘ symbol.

---

The following versions of software and data (see [references ⓘ](#)) were used in the production of this report:

MolProbity : 4.02b-467  
Mogul : 1.7 (RC4), CSD as536be (2015)  
Xtriage (Phenix) : **NOT EXECUTED**  
EDS : **NOT EXECUTED**  
Percentile statistics : 20151230.v01 (using entries in the PDB archive December 30th 2015)  
Ideal geometry (proteins) : Engh & Huber (2001)  
Ideal geometry (DNA, RNA) : Parkinson et al. (1996)  
Validation Pipeline (wwPDB-VP) : trunk26865

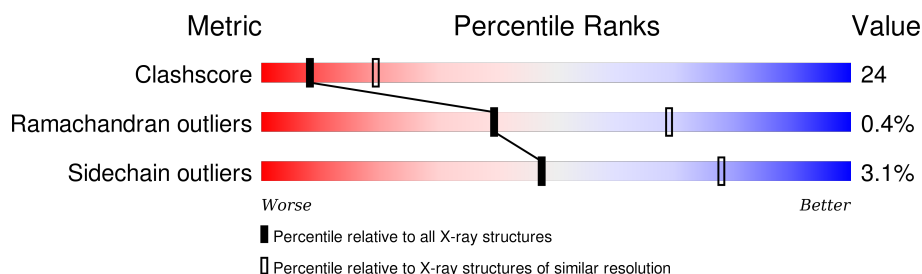
# 1 Overall quality at a glance

The following experimental techniques were used to determine the structure:

## *X-RAY DIFFRACTION*

The reported resolution of this entry is 2.70 Å.

Percentile scores (ranging between 0-100) for global validation metrics of the entry are shown in the following graphic. The table shows the number of entries on which the scores are based.



Metric	Whole archive (#Entries)	Similar resolution (#Entries, resolution range(Å))
Clashscore	102246	2422 (2.70-2.70)
Ramachandran outliers	100387	2382 (2.70-2.70)
Sidechain outliers	100360	2382 (2.70-2.70)

The table below summarises the geometric issues observed across the polymeric chains and their fit to the electron density. The red, orange, yellow and green segments on the lower bar indicate the fraction of residues that contain outliers for  $\geq 3$ , 2, 1 and 0 types of geometric quality criteria. A grey segment represents the fraction of residues that are not modelled. The numeric value for each fraction is indicated below the corresponding segment, with a dot representing fractions  $\leq 5\%$ . The upper red bar (where present) indicates the fraction of residues that have poor fit to the electron density. The numeric value is given above the bar.

Note EDS was not executed.

Mol	Chain	Length	Quality of chain
1	A	268	
1	B	268	
2	C	13	
2	D	13	

## 2 Entry composition [i](#)

There are 4 unique types of molecules in this entry. The entry contains 3866 atoms, of which 0 are hydrogens and 0 are deuteriums.

In the tables below, the ZeroOcc column contains the number of atoms modelled with zero occupancy, the AltConf column contains the number of residues with at least one atom in alternate conformation and the Trace column contains the number of residues modelled with at most 2 atoms.

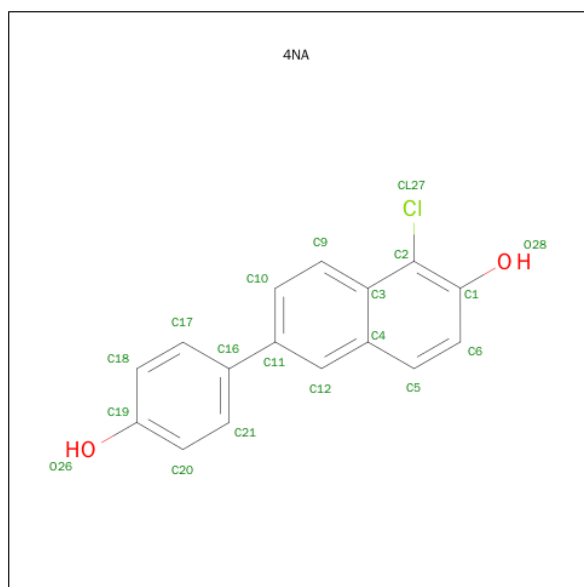
- Molecule 1 is a protein called Estrogen receptor beta.

Mol	Chain	Residues	Atoms					ZeroOcc	AltConf	Trace
1	A	225	Total	C	N	O	S	0	0	0
			1775	1141	299	315	20			
1	B	225	Total	C	N	O	S	0	0	0
			1775	1141	299	315	20			

- Molecule 2 is a protein called STEROID RECEPTOR COACTIVATOR-1.

Mol	Chain	Residues	Atoms				ZeroOcc	AltConf	Trace
2	C	9	Total	C	N	O	0	0	0
			71	46	11	14			
2	D	9	Total	C	N	O	0	0	0
			71	46	11	14			

- Molecule 3 is 1-CHLORO-6-(4-HYDROXYPHENYL)-2-NAPHTHOL (three-letter code: 4NA) (formula: C<sub>16</sub>H<sub>11</sub>ClO<sub>2</sub>).



Mol	Chain	Residues	Atoms				ZeroOcc	AltConf
3	A	1	Total	C	Cl	O	0	0
			19	16	1	2		
3	B	1	Total	C	Cl	O	0	0
			19	16	1	2		

- Molecule 4 is water.

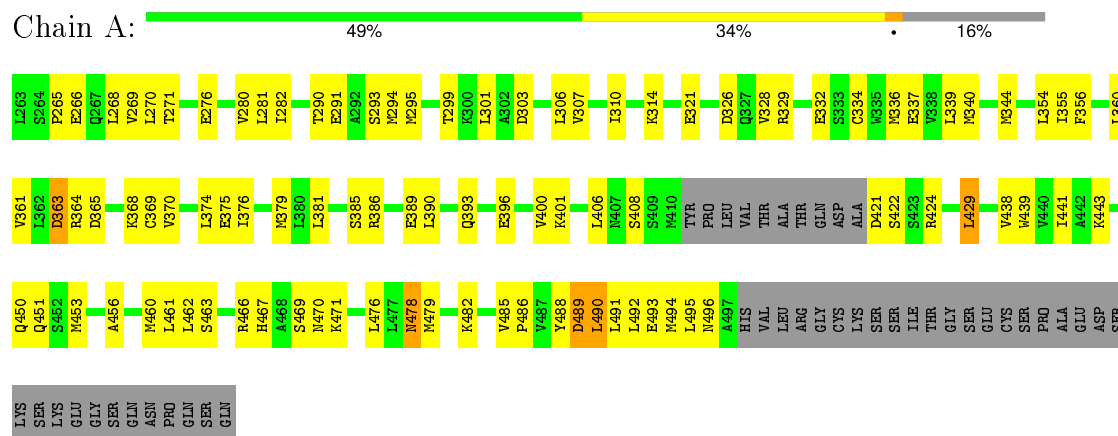
Mol	Chain	Residues	Atoms		ZeroOcc	AltConf
4	A	69	Total	O	0	0
			69	69		
4	B	63	Total	O	0	0
			63	63		
4	C	4	Total	O	0	0
			4	4		

### 3 Residue-property plots

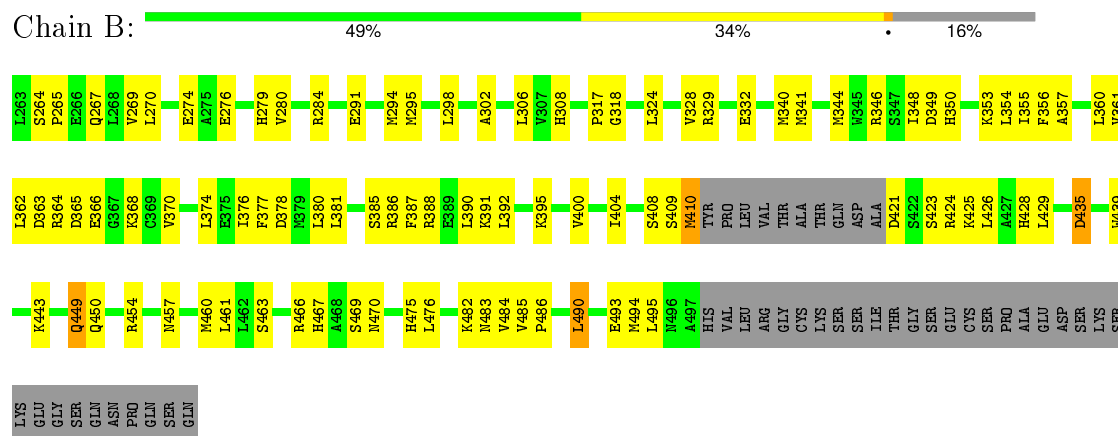
These plots are drawn for all protein, RNA and DNA chains in the entry. The first graphic for a chain summarises the proportions of errors displayed in the second graphic. The second graphic shows the sequence view annotated by issues in geometry and electron density. Residues are color-coded according to the number of geometric quality criteria for which they contain at least one outlier: green = 0, yellow = 1, orange = 2 and red = 3 or more. A red dot above a residue indicates a poor fit to the electron density ( $RSRZ > 2$ ). Stretches of 2 or more consecutive residues without any outlier are shown as a green connector. Residues present in the sample, but not in the model, are shown in grey.

Note EDS was not executed.

#### • Molecule 1: Estrogen receptor beta



#### • Molecule 1: Estrogen receptor beta



#### • Molecule 2: STEROID RECEPTOR COACTIVATOR-1



- Molecule 2: STEROID RECEPTOR COACTIVATOR-1

Chain D:  46% 23% 31%



## 4 Data and refinement statistics

Xtriage (Phenix) and EDS were not executed - this section will therefore be incomplete.

Property	Value	Source
Space group	P 21 21 21	Depositor
Cell constants a, b, c, $\alpha$ , $\beta$ , $\gamma$	51.97Å 87.68Å 99.76Å 90.00° 90.00° 90.00°	Depositor
Resolution (Å)	19.46 – 2.70	Depositor
% Data completeness (in resolution range)	96.3 (19.46-2.70)	Depositor
$R_{merge}$	0.08	Depositor
$R_{sym}$	0.09	Depositor
Refinement program	CNS 1.1	Depositor
R, $R_{free}$	0.214 , 0.269	Depositor
Estimated twinning fraction	No twinning to report.	Xtriage
Total number of atoms	3866	wwPDB-VP
Average B, all atoms (Å <sup>2</sup> )	36.0	wwPDB-VP

## 5 Model quality

### 5.1 Standard geometry

Bond lengths and bond angles in the following residue types are not validated in this section: 4NA

The Z score for a bond length (or angle) is the number of standard deviations the observed value is removed from the expected value. A bond length (or angle) with  $|Z| > 5$  is considered an outlier worth inspection. RMSZ is the root-mean-square of all Z scores of the bond lengths (or angles).

Mol	Chain	Bond lengths		Bond angles	
		RMSZ	$\# Z  > 5$	RMSZ	$\# Z  > 5$
1	A	0.40	2/1806 (0.1%)	0.57	2/2437 (0.1%)
1	B	0.31	0/1806	0.54	0/2437
2	C	0.42	0/70	0.63	0/93
2	D	0.42	0/70	0.60	0/93
All	All	0.36	2/3752 (0.1%)	0.56	2/5060 (0.0%)

Chiral center outliers are detected by calculating the chiral volume of a chiral center and verifying if the center is modelled as a planar moiety or with the opposite hand. A planarity outlier is detected by checking planarity of atoms in a peptide group, atoms in a mainchain group or atoms of a sidechain that are expected to be planar.

Mol	Chain	#Chirality outliers	#Planarity outliers
1	A	0	1

All (2) bond length outliers are listed below:

Mol	Chain	Res	Type	Atoms	Z	Observed(Å)	Ideal(Å)
1	A	422	SER	N-CA	6.23	1.58	1.46
1	A	422	SER	CB-OG	5.68	1.49	1.42

All (2) bond angle outliers are listed below:

Mol	Chain	Res	Type	Atoms	Z	Observed( $^{\circ}$ )	Ideal( $^{\circ}$ )
1	A	421	ASP	CB-CG-OD1	8.16	125.64	118.30
1	A	421	ASP	CB-CG-OD2	-6.30	112.63	118.30

There are no chirality outliers.

All (1) planarity outliers are listed below:



Mol	Chain	Res	Type	Group
1	A	424	ARG	Sidechain

## 5.2 Too-close contacts ⓘ

In the following table, the Non-H and H(model) columns list the number of non-hydrogen atoms and hydrogen atoms in the chain respectively. The H(added) column lists the number of hydrogen atoms added and optimized by MolProbity. The Clashes column lists the number of clashes within the asymmetric unit, whereas Symm-Clashes lists symmetry related clashes.

Mol	Chain	Non-H	H(model)	H(added)	Clashes	Symm-Clashes
1	A	1775	0	1852	78	0
1	B	1775	0	1852	105	0
2	C	71	0	83	7	0
2	D	71	0	83	3	0
3	A	19	0	11	3	0
3	B	19	0	11	6	0
4	A	69	0	0	16	0
4	B	63	0	0	20	0
4	C	4	0	0	3	0
All	All	3866	0	3892	186	0

The all-atom clashscore is defined as the number of clashes found per 1000 atoms (including hydrogen atoms). The all-atom clashscore for this structure is 24.

All (186) close contacts within the same asymmetric unit are listed below, sorted by their clash magnitude.

Atom-1	Atom-2	Interatomic distance (Å)	Clash overlap (Å)
1:B:376:ILE:HD13	3:B:202:4NA:CL27	1.75	1.22
1:B:421:ASP:O	1:B:424:ARG:HG2	1.44	1.17
1:B:376:ILE:CD1	3:B:202:4NA:CL27	2.41	1.06
1:B:435:ASP:HB3	4:B:122:HOH:O	1.57	1.05
1:B:475:HIS:HD2	3:B:202:4NA:O28	1.43	1.02
1:B:482:LYS:HB3	1:B:484:VAL:HG23	1.45	0.96
1:B:475:HIS:CD2	3:B:202:4NA:O28	2.20	0.94
1:B:386:ARG:HG2	1:B:461:LEU:HD21	1.51	0.91
1:B:279:HIS:CD2	4:B:134:HOH:O	2.26	0.88
1:B:421:ASP:HA	1:B:424:ARG:HE	1.39	0.88
1:B:421:ASP:O	1:B:424:ARG:CG	2.22	0.86
1:B:340:MET:HE1	1:B:469:SER:HA	1.55	0.86
1:B:388:ARG:NH2	4:B:128:HOH:O	2.08	0.85
1:B:463:SER:HA	4:B:117:HOH:O	1.77	0.85

*Continued on next page...*

*Continued from previous page...*

Atom-1	Atom-2	Interatomic distance (Å)	Clash overlap (Å)
1:B:329:ARG:HB3	1:B:329:ARG:HH11	1.43	0.84
1:B:435:ASP:CB	4:B:122:HOH:O	2.20	0.83
1:A:340:MET:HE1	1:A:469:SER:HA	1.59	0.83
1:B:340:MET:HE1	1:B:469:SER:CA	2.08	0.82
1:A:376:ILE:HD12	3:A:201:4NA:CL27	2.16	0.82
1:B:421:ASP:HA	1:B:424:ARG:NE	1.97	0.78
1:B:329:ARG:HB3	1:B:329:ARG:NH1	1.99	0.76
1:A:486:PRO:HG2	1:A:488:TYR:HE1	1.51	0.76
1:B:421:ASP:C	1:B:424:ARG:HG2	2.07	0.75
1:B:428:HIS:HB2	4:B:116:HOH:O	1.86	0.74
1:A:368:LYS:HG2	1:A:374:LEU:HD22	1.70	0.73
1:B:279:HIS:HD2	4:B:134:HOH:O	1.68	0.71
1:B:341:MET:HA	1:B:344:MET:HE2	1.73	0.71
1:B:408:SER:C	1:B:410:MET:H	1.95	0.70
1:A:463:SER:HA	4:B:117:HOH:O	1.90	0.69
1:A:290:THR:HG23	4:A:17:HOH:O	1.93	0.68
1:A:386:ARG:HG3	1:A:461:LEU:HD11	1.78	0.66
1:B:421:ASP:OD1	1:B:424:ARG:NH2	2.28	0.66
1:B:294:MET:HA	4:B:100:HOH:O	1.95	0.66
1:A:364:ARG:HB2	4:A:113:HOH:O	1.95	0.66
1:B:410:MET:HG3	1:B:466:ARG:HH12	1.64	0.62
1:A:493:GLU:OE2	4:A:107:HOH:O	2.15	0.62
1:B:329:ARG:CB	1:B:329:ARG:HH11	2.12	0.62
1:A:488:TYR:HA	4:A:64:HOH:O	1.99	0.62
1:A:400:VAL:HG13	1:A:462:LEU:HD21	1.81	0.62
2:C:611:THR:HB	4:C:21:HOH:O	1.99	0.61
1:B:364:ARG:NH1	1:B:374:LEU:HD21	2.15	0.61
1:A:336:MET:HG3	1:A:340:MET:HE1	1.84	0.60
1:B:385:SER:HA	1:B:388:ARG:NH1	2.15	0.60
1:B:264:SER:OG	1:B:267:GLN:HG3	2.02	0.60
1:A:295:MET:HE1	1:A:479:MET:HG3	1.82	0.60
1:A:295:MET:O	1:A:299:THR:HG23	2.03	0.58
1:B:435:ASP:CG	4:B:122:HOH:O	2.36	0.58
1:B:368:LYS:HD3	1:B:374:LEU:HD22	1.84	0.58
1:A:450:GLN:HG3	4:A:61:HOH:O	2.02	0.58
1:A:326:ASP:HA	1:A:329:ARG:HG2	1.85	0.58
1:A:489:ASP:HB3	2:C:605:LYS:HE3	1.85	0.58
1:B:386:ARG:HH11	1:B:461:LEU:HD21	1.67	0.58
1:A:385:SER:O	1:A:389:GLU:HG3	2.04	0.58
1:A:406:LEU:HD11	1:A:429:LEU:HD22	1.85	0.58
1:B:421:ASP:OD1	1:B:424:ARG:CZ	2.52	0.58

*Continued on next page...*

*Continued from previous page...*

Atom-1	Atom-2	Interatomic distance (Å)	Clash overlap (Å)
1:A:466:ARG:HD2	4:A:41:HOH:O	2.03	0.57
1:A:393:GLN:HB2	1:A:396:GLU:HG3	1.84	0.57
1:A:295:MET:CE	1:A:479:MET:HG3	2.33	0.57
1:B:391:LYS:NZ	1:B:391:LYS:HB3	2.20	0.57
1:B:284:ARG:HD2	4:B:14:HOH:O	2.04	0.56
1:A:332:GLU:HA	4:A:46:HOH:O	2.04	0.56
1:A:340:MET:CE	1:A:469:SER:HA	2.33	0.56
1:B:439:TRP:CZ2	1:B:443:LYS:HD2	2.40	0.56
1:B:340:MET:O	1:B:344:MET:HG3	2.06	0.56
1:B:408:SER:O	1:B:410:MET:N	2.36	0.56
1:A:301:LEU:HD22	1:A:360:LEU:HD23	1.88	0.56
1:A:266:GLU:O	1:A:270:LEU:HD13	2.06	0.55
1:A:291:GLU:HG3	1:A:370:VAL:HG22	1.89	0.55
1:B:377:PHE:O	1:B:381:LEU:HG	2.07	0.55
1:B:348:ILE:HG23	1:B:349:ASP:N	2.22	0.54
1:A:486:PRO:HG2	1:A:488:TYR:CE1	2.36	0.54
1:B:457:ASN:HA	1:B:460:MET:HE3	1.90	0.54
1:B:490:LEU:O	1:B:494:MET:HG2	2.08	0.54
1:A:294:MET:HE3	4:A:7:HOH:O	2.08	0.53
1:A:282:ILE:HD13	1:A:360:LEU:HD22	1.90	0.53
1:B:269:VAL:HG11	1:B:395:LYS:HG3	1.89	0.53
1:B:291:GLU:HG3	1:B:370:VAL:HA	1.89	0.53
1:A:281:LEU:N	1:A:281:LEU:HD12	2.24	0.53
2:C:608:GLN:HG2	4:C:10:HOH:O	2.09	0.52
1:B:357:ALA:HB1	4:B:26:HOH:O	2.10	0.52
1:A:390:LEU:HG	4:A:62:HOH:O	2.08	0.52
1:B:376:ILE:HD12	3:B:202:4NA:CL27	2.42	0.52
1:B:354:LEU:HG	1:B:381:LEU:HD21	1.92	0.52
1:B:363:ASP:HB3	1:B:365:ASP:OD2	2.10	0.51
1:B:408:SER:C	1:B:410:MET:N	2.64	0.51
1:B:364:ARG:HD3	1:B:364:ARG:C	2.31	0.51
1:B:493:GLU:OE2	2:D:605:LYS:HB3	2.11	0.51
1:B:421:ASP:HA	1:B:424:ARG:HG2	1.93	0.51
1:B:380:LEU:HA	4:B:35:HOH:O	2.11	0.51
1:A:334:CYS:HB3	1:A:408:SER:HB3	1.93	0.51
1:B:284:ARG:NH1	1:B:366:GLU:OE2	2.44	0.50
1:B:476:LEU:HD23	1:B:495:LEU:HD21	1.92	0.50
1:A:406:LEU:CD1	1:A:429:LEU:HD22	2.41	0.50
1:A:453:MET:HB3	4:A:38:HOH:O	2.11	0.50
1:A:441:ILE:HG22	1:A:451:GLN:HG2	1.94	0.50
1:A:363:ASP:OD2	1:A:365:ASP:HB2	2.11	0.50

*Continued on next page...*

*Continued from previous page...*

Atom-1	Atom-2	Interatomic distance (Å)	Clash overlap (Å)
1:A:303:ASP:OD2	4:A:120:HOH:O	2.20	0.50
4:A:41:HOH:O	1:B:467:HIS:CD2	2.65	0.50
1:A:478:ASN:HD21	1:A:482:LYS:HE2	1.76	0.50
1:A:493:GLU:OE1	2:C:605:LYS:HD3	2.12	0.49
1:B:450:GLN:HA	1:B:450:GLN:OE1	2.12	0.49
1:A:443:LYS:HB3	1:A:443:LYS:HZ2	1.76	0.49
1:A:393:GLN:HB3	4:A:48:HOH:O	2.11	0.49
1:A:369:CYS:HB2	4:A:7:HOH:O	2.12	0.49
1:B:329:ARG:NE	4:B:31:HOH:O	2.45	0.49
1:B:295:MET:HE1	1:B:298:LEU:HD12	1.95	0.49
1:B:421:ASP:CA	1:B:424:ARG:HG2	2.42	0.49
1:A:310:ILE:O	1:A:314:LYS:HG3	2.12	0.49
1:A:328:VAL:O	1:A:332:GLU:HG3	2.13	0.49
1:B:386:ARG:HG2	1:B:461:LEU:CD2	2.34	0.49
1:A:340:MET:O	1:A:344:MET:HG3	2.13	0.49
1:B:340:MET:HE1	1:B:469:SER:N	2.27	0.48
2:C:613:THR:HG22	2:C:613:THR:OXT	2.13	0.48
1:A:476:LEU:HD23	1:A:495:LEU:HD13	1.95	0.48
1:B:423:SER:O	1:B:426:LEU:HB3	2.14	0.48
1:B:485:VAL:HG23	4:B:83:HOH:O	2.12	0.48
1:A:280:VAL:C	1:A:281:LEU:HD12	2.34	0.48
1:A:492:LEU:HG	1:A:496:ASN:HD21	1.79	0.48
1:B:475:HIS:CD2	3:B:202:4NA:CL27	3.04	0.47
1:B:329:ARG:HD2	4:B:49:HOH:O	2.14	0.47
1:A:340:MET:HE1	1:A:469:SER:CA	2.38	0.47
1:B:368:LYS:CD	1:B:374:LEU:HD22	2.43	0.47
1:B:387:PHE:CD1	1:B:392:LEU:HD22	2.48	0.47
2:C:605:LYS:N	4:C:10:HOH:O	2.47	0.47
1:B:368:LYS:HD3	1:B:374:LEU:HD13	1.95	0.47
1:A:438:VAL:HG11	1:B:449:GLN:NE2	2.30	0.47
1:B:485:VAL:CG2	1:B:486:PRO:HD2	2.44	0.47
1:B:386:ARG:NE	4:B:82:HOH:O	2.47	0.47
1:B:279:HIS:CE1	1:B:346:ARG:HD3	2.50	0.47
1:A:488:TYR:HB2	1:A:491:LEU:HB3	1.97	0.47
1:A:306:LEU:HB3	1:A:490:LEU:HD13	1.96	0.47
1:B:378:ASP:HA	1:B:381:LEU:HD12	1.98	0.46
1:A:467:HIS:O	1:A:471:LYS:HG2	2.15	0.46
1:B:400:VAL:O	1:B:404:ILE:HG13	2.16	0.46
1:B:328:VAL:O	1:B:332:GLU:HG3	2.15	0.46
1:A:386:ARG:HG2	1:A:461:LEU:HD21	1.98	0.45
1:B:269:VAL:CG1	1:B:395:LYS:HG3	2.45	0.45

*Continued on next page...*

*Continued from previous page...*

Atom-1	Atom-2	Interatomic distance (Å)	Clash overlap (Å)
1:B:421:ASP:HA	1:B:424:ARG:CD	2.46	0.45
1:A:438:VAL:HG11	1:B:449:GLN:HE22	1.82	0.45
2:D:612:THR:HG22	2:D:612:THR:O	2.17	0.45
1:A:337:GLU:HB3	4:A:39:HOH:O	2.16	0.45
1:B:350:HIS:HD2	4:B:22:HOH:O	2.00	0.45
1:B:482:LYS:O	1:B:483:ASN:HB2	2.16	0.45
1:A:386:ARG:HD2	4:A:62:HOH:O	2.16	0.45
1:B:365:ASP:O	1:B:368:LYS:HG2	2.16	0.45
1:B:356:PHE:CE1	1:B:362:LEU:HD12	2.52	0.45
1:B:280:VAL:HG22	1:B:308:HIS:HD2	1.81	0.45
1:B:329:ARG:HD3	4:B:109:HOH:O	2.16	0.44
1:A:354:LEU:HG	1:A:381:LEU:HD21	1.98	0.44
1:B:476:LEU:HG	1:B:495:LEU:HD11	1.99	0.44
1:A:461:LEU:HA	1:A:461:LEU:HD23	1.86	0.44
1:B:365:ASP:OD2	1:B:366:GLU:N	2.51	0.44
1:A:490:LEU:O	1:A:494:MET:HG2	2.18	0.44
1:B:410:MET:HA	1:B:410:MET:CE	2.48	0.44
1:A:266:GLU:HB2	1:A:439:TRP:CZ2	2.52	0.44
1:B:484:VAL:O	1:B:484:VAL:HG12	2.18	0.43
1:A:334:CYS:HB3	1:A:408:SER:CB	2.48	0.43
1:A:307:VAL:HG22	1:A:490:LEU:HD12	1.98	0.43
1:A:376:ILE:CD1	3:A:201:4NA:CL27	2.95	0.43
1:B:421:ASP:OD1	1:B:424:ARG:NE	2.51	0.43
1:A:326:ASP:O	1:A:329:ARG:HG2	2.18	0.43
1:A:339:LEU:HB3	3:A:201:4NA:C18	2.49	0.43
1:B:390:LEU:O	1:B:454:ARG:NH2	2.49	0.43
1:B:324:LEU:O	1:B:328:VAL:HG23	2.20	0.42
1:A:355:ILE:HD13	1:A:361:VAL:HG13	2.01	0.42
1:B:355:ILE:HD13	1:B:361:VAL:HG13	2.02	0.42
1:A:265:PRO:O	1:A:269:VAL:HG23	2.19	0.42
1:A:268:LEU:O	1:A:271:THR:HG22	2.19	0.42
2:D:608:GLN:O	2:D:612:THR:HB	2.20	0.42
1:A:470:ASN:OD1	1:B:470:ASN:OD1	2.37	0.42
1:B:353:LYS:NZ	1:B:363:ASP:CG	2.74	0.42
1:B:439:TRP:CH2	1:B:443:LYS:HD2	2.54	0.42
1:B:424:ARG:HG3	1:B:425:LYS:N	2.34	0.41
1:A:456:ALA:O	1:A:460:MET:HG3	2.21	0.41
1:A:479:MET:HB3	1:A:485:VAL:HG13	2.02	0.41
1:A:310:ILE:HD12	2:C:606:LEU:CD1	2.51	0.41
1:A:276:GLU:OE1	1:A:401:LYS:NZ	2.52	0.41
1:B:264:SER:HB2	4:B:44:HOH:O	2.19	0.41

*Continued on next page...*

Continued from previous page...

Atom-1	Atom-2	Interatomic distance (Å)	Clash overlap (Å)
1:A:301:LEU:CD2	1:A:356:PHE:HB3	2.51	0.41
1:B:318:GLY:O	1:B:429:LEU:HD21	2.21	0.41
1:B:302:ALA:O	1:B:306:LEU:HG	2.21	0.40
1:B:364:ARG:CZ	1:B:374:LEU:HD11	2.51	0.40
1:B:357:ALA:HB3	1:B:360:LEU:HB3	2.03	0.40
1:A:290:THR:OG1	1:A:293:SER:HB3	2.21	0.40
1:B:265:PRO:O	1:B:269:VAL:HG23	2.21	0.40
1:A:375:GLU:HG2	1:A:379:MET:CE	2.52	0.40

There are no symmetry-related clashes.

## 5.3 Torsion angles [i](#)

### 5.3.1 Protein backbone [i](#)

In the following table, the Percentiles column shows the percent Ramachandran outliers of the chain as a percentile score with respect to all X-ray entries followed by that with respect to entries of similar resolution.

The Analysed column shows the number of residues for which the backbone conformation was analysed, and the total number of residues.

Mol	Chain	Analysed	Favoured	Allowed	Outliers	Percentiles	
1	A	221/268 (82%)	212 (96%)	9 (4%)	0	100	100
1	B	221/268 (82%)	207 (94%)	12 (5%)	2 (1%)	21	49
2	C	7/13 (54%)	7 (100%)	0	0	100	100
2	D	7/13 (54%)	7 (100%)	0	0	100	100
All	All	456/562 (81%)	433 (95%)	21 (5%)	2 (0%)	39	69

All (2) Ramachandran outliers are listed below:

Mol	Chain	Res	Type
1	B	409	SER
1	B	317	PRO

### 5.3.2 Protein sidechains [i](#)

In the following table, the Percentiles column shows the percent sidechain outliers of the chain as a percentile score with respect to all X-ray entries followed by that with respect to entries of similar

resolution.

The Analysed column shows the number of residues for which the sidechain conformation was analysed, and the total number of residues.

Mol	Chain	Analysed	Rotameric	Outliers	Percentiles	
1	A	202/240 (84%)	196 (97%)	6 (3%)	48	79
1	B	202/240 (84%)	195 (96%)	7 (4%)	43	74
2	C	9/12 (75%)	9 (100%)	0	100	100
2	D	9/12 (75%)	9 (100%)	0	100	100
All	All	422/504 (84%)	409 (97%)	13 (3%)	47	78

All (13) residues with a non-rotameric sidechain are listed below:

Mol	Chain	Res	Type
1	A	321	GLU
1	A	363	ASP
1	A	429	LEU
1	A	478	ASN
1	A	489	ASP
1	A	490	LEU
1	B	270	LEU
1	B	274	GLU
1	B	276	GLU
1	B	410	MET
1	B	435	ASP
1	B	449	GLN
1	B	490	LEU

Some sidechains can be flipped to improve hydrogen bonding and reduce clashes. All (16) such sidechains are listed below:

Mol	Chain	Res	Type
1	A	279	HIS
1	A	407	ASN
1	A	428	HIS
1	A	449	GLN
1	A	457	ASN
1	A	478	ASN
1	A	496	ASN
1	B	279	HIS
1	B	308	HIS
1	B	407	ASN

*Continued on next page...*

*Continued from previous page...*

Mol	Chain	Res	Type
1	B	467	HIS
1	B	470	ASN
1	B	475	HIS
1	B	483	ASN
1	B	496	ASN
2	D	608	GLN

### 5.3.3 RNA ⓘ

There are no RNA molecules in this entry.

## 5.4 Non-standard residues in protein, DNA, RNA chains ⓘ

There are no non-standard protein/DNA/RNA residues in this entry.

## 5.5 Carbohydrates ⓘ

There are no carbohydrates in this entry.

## 5.6 Ligand geometry ⓘ

2 ligands are modelled in this entry.

In the following table, the Counts columns list the number of bonds (or angles) for which Mogul statistics could be retrieved, the number of bonds (or angles) that are observed in the model and the number of bonds (or angles) that are defined in the chemical component dictionary. The Link column lists molecule types, if any, to which the group is linked. The Z score for a bond length (or angle) is the number of standard deviations the observed value is removed from the expected value. A bond length (or angle) with  $|Z| > 2$  is considered an outlier worth inspection. RMSZ is the root-mean-square of all Z scores of the bond lengths (or angles).

Mol	Type	Chain	Res	Link	Bond lengths			Bond angles		
					Counts	RMSZ	$\# Z  > 2$	Counts	RMSZ	$\# Z  > 2$
3	4NA	A	201	-	21,21,21	2.39	14 (66%)	27,30,30	0.93	1 (3%)
3	4NA	B	202	-	21,21,21	2.32	13 (61%)	27,30,30	0.85	1 (3%)

In the following table, the Chirals column lists the number of chiral outliers, the number of chiral centers analysed, the number of these observed in the model and the number defined in the chemical component dictionary. Similar counts are reported in the Torsion and Rings columns. '-' means no outliers of that kind were identified.



Mol	Type	Chain	Res	Link	Chirals	Torsions	Rings
3	4NA	A	201	-	-	0/4/4/4	0/3/3/3
3	4NA	B	202	-	-	0/4/4/4	0/3/3/3

All (27) bond length outliers are listed below:

Mol	Chain	Res	Type	Atoms	Z	Observed(Å)	Ideal(Å)
3	A	201	4NA	C6-C1	2.03	1.43	1.39
3	B	202	4NA	C18-C19	2.03	1.43	1.38
3	A	201	4NA	C18-C19	2.15	1.43	1.38
3	A	201	4NA	C20-C19	2.29	1.43	1.38
3	A	201	4NA	C18-C17	2.44	1.43	1.38
3	B	202	4NA	C20-C19	2.45	1.43	1.38
3	A	201	4NA	C1-C2	2.50	1.44	1.39
3	B	202	4NA	C2-C3	2.54	1.45	1.42
3	B	202	4NA	C21-C20	2.59	1.43	1.38
3	A	201	4NA	C17-C16	2.61	1.44	1.39
3	B	202	4NA	C1-C2	2.65	1.44	1.39
3	B	202	4NA	C18-C17	2.65	1.43	1.38
3	A	201	4NA	C21-C20	2.70	1.43	1.38
3	B	202	4NA	C21-C16	2.72	1.45	1.39
3	B	202	4NA	C10-C11	2.82	1.45	1.39
3	B	202	4NA	C12-C11	2.89	1.45	1.38
3	A	201	4NA	C21-C16	2.90	1.45	1.39
3	B	202	4NA	C5-C6	2.98	1.42	1.36
3	A	201	4NA	C10-C11	3.03	1.45	1.39
3	A	201	4NA	C12-C11	3.03	1.45	1.38
3	A	201	4NA	C5-C6	3.07	1.43	1.36
3	B	202	4NA	C17-C16	3.16	1.46	1.39
3	B	202	4NA	C3-C4	3.32	1.49	1.42
3	A	201	4NA	C9-C10	3.34	1.43	1.36
3	B	202	4NA	C9-C10	3.35	1.43	1.36
3	A	201	4NA	C2-C3	3.46	1.46	1.42
3	A	201	4NA	C3-C4	3.53	1.49	1.42

All (2) bond angle outliers are listed below:

Mol	Chain	Res	Type	Atoms	Z	Observed(°)	Ideal(°)
3	B	202	4NA	C3-C2-CL27	3.20	122.71	118.56
3	A	201	4NA	C3-C2-CL27	3.77	123.45	118.56

There are no chirality outliers.

There are no torsion outliers.

There are no ring outliers.

2 monomers are involved in 9 short contacts:

Mol	Chain	Res	Type	Clashes	Symm-Clashes
3	A	201	4NA	3	0
3	B	202	4NA	6	0

## 5.7 Other polymers [i](#)

There are no such residues in this entry.

## 5.8 Polymer linkage issues [i](#)

There are no chain breaks in this entry.

## 6 Fit of model and data [i](#)

### 6.1 Protein, DNA and RNA chains [i](#)

EDS was not executed - this section will therefore be empty.

### 6.2 Non-standard residues in protein, DNA, RNA chains [i](#)

EDS was not executed - this section will therefore be empty.

### 6.3 Carbohydrates [i](#)

EDS was not executed - this section will therefore be empty.

### 6.4 Ligands [i](#)

EDS was not executed - this section will therefore be empty.

### 6.5 Other polymers [i](#)

EDS was not executed - this section will therefore be empty.