



Full wwPDB X-ray Structure Validation Report ⓘ

Feb 19, 2016 – 08:43 PM GMT

PDB ID : 4YZ5
Title : Crystal Structure of Streptococcus pneumoniae NanC, in complex with 3-Sialyllactose
Authors : Lukacik, P.; Owen, C.D.; Potter, J.A.; Taylor, G.L.; Walsh, M.A.
Deposited on : 2015-03-24
Resolution : 2.27 Å(reported)

This is a Full wwPDB X-ray Structure Validation Report for a publicly released PDB entry.
We welcome your comments at validation@mail.wwpdb.org
A user guide is available at
<http://wwpdb.org/validation/2016/XrayValidationReportHelp>
with specific help available everywhere you see the ⓘ symbol.

The following versions of software and data (see [references ⓘ](#)) were used in the production of this report:

MolProbity : 4.02b-467
Mogul : 1.7.1 (RC1), CSD as537be (2016)
Xtriage (Phenix) : 1.9-1692
EDS : rb-20026982
Percentile statistics : 20151230.v01 (using entries in the PDB archive December 30th 2015)
Refmac : 5.8.0135
CCP4 : 6.5.0
Ideal geometry (proteins) : Engh & Huber (2001)
Ideal geometry (DNA, RNA) : Parkinson et al. (1996)
Validation Pipeline (wwPDB-VP) : rb-20026982

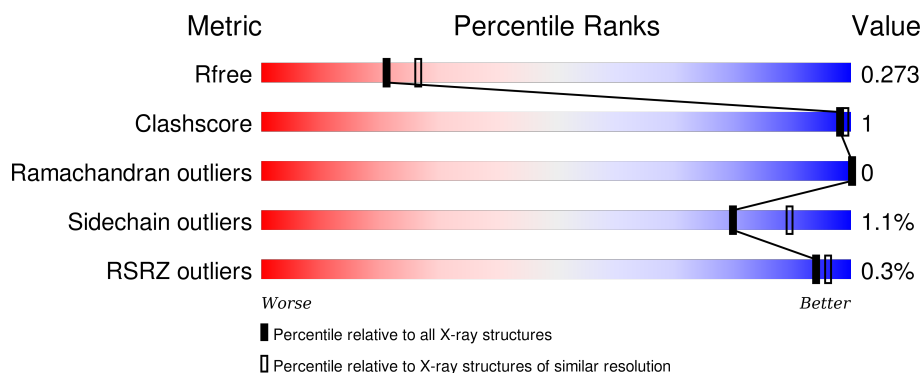
1 Overall quality at a glance

The following experimental techniques were used to determine the structure:

X-RAY DIFFRACTION

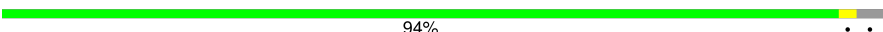

The reported resolution of this entry is 2.27 Å.

Percentile scores (ranging between 0-100) for global validation metrics of the entry are shown in the following graphic. The table shows the number of entries on which the scores are based.



Metric	Whole archive (#Entries)	Similar resolution (#Entries, resolution range(Å))
R_{free}	91344	5193 (2.30-2.26)
Clashscore	102246	5929 (2.30-2.26)
Ramachandran outliers	100387	5851 (2.30-2.26)
Sidechain outliers	100360	5850 (2.30-2.26)
RSRZ outliers	91569	5204 (2.30-2.26)

The table below summarises the geometric issues observed across the polymeric chains and their fit to the electron density. The red, orange, yellow and green segments on the lower bar indicate the fraction of residues that contain outliers for ≥ 3 , 2, 1 and 0 types of geometric quality criteria. A grey segment represents the fraction of residues that are not modelled. The numeric value for each fraction is indicated below the corresponding segment, with a dot representing fractions $\leq 5\%$. The upper red bar (where present) indicates the fraction of residues that have poor fit to the electron density. The numeric value is given above the bar.

Mol	Chain	Length	Quality of chain
1	A	677	 94%
1	B	677	 93%

The following table lists non-polymeric compounds, carbohydrate monomers and non-standard residues in protein, DNA, RNA chains that are outliers for geometric or electron-density-fit criteria:

Mol	Type	Chain	Res	Chirality	Geometry	Clashes	Electron density
2	SLT	B	801	-	-	-	X
3	DAN	B	802	-	-	-	X
4	SO4	A	1003	-	-	-	X
4	SO4	A	1005	-	-	-	X
4	SO4	A	1007	-	-	-	X
4	SO4	B	803	-	-	-	X
4	SO4	B	805	-	-	-	X
4	SO4	B	806	-	-	-	X
4	SO4	B	807	-	-	-	X

2 Entry composition

There are 5 unique types of molecules in this entry. The entry contains 11274 atoms, of which 0 are hydrogens and 0 are deuteriums.

In the tables below, the ZeroOcc column contains the number of atoms modelled with zero occupancy, the AltConf column contains the number of residues with at least one atom in alternate conformation and the Trace column contains the number of residues modelled with at most 2 atoms.

- Molecule 1 is a protein called Putative neuraminidase.

Mol	Chain	Residues	Atoms					ZeroOcc	AltConf	Trace
1	A	656	Total	C	N	O	S	0	1	0
			5206	3305	878	1013	10			
1	B	654	Total	C	N	O	S	0	2	0
			5193	3297	876	1010	10			

There are 40 discrepancies between the modelled and reference sequences:

Chain	Residue	Modelled	Actual	Comment	Reference
A	64	MET	-	initiating methionine	UNP Q97Q99
A	65	ALA	-	expression tag	UNP Q97Q99
A	66	HIS	-	expression tag	UNP Q97Q99
A	67	HIS	-	expression tag	UNP Q97Q99
A	68	HIS	-	expression tag	UNP Q97Q99
A	69	HIS	-	expression tag	UNP Q97Q99
A	70	HIS	-	expression tag	UNP Q97Q99
A	71	HIS	-	expression tag	UNP Q97Q99
A	72	SER	-	expression tag	UNP Q97Q99
A	73	SER	-	expression tag	UNP Q97Q99
A	74	GLY	-	expression tag	UNP Q97Q99
A	75	LEU	-	expression tag	UNP Q97Q99
A	76	GLU	-	expression tag	UNP Q97Q99
A	77	VAL	-	expression tag	UNP Q97Q99
A	78	LEU	-	expression tag	UNP Q97Q99
A	79	PHE	-	expression tag	UNP Q97Q99
A	80	GLN	-	expression tag	UNP Q97Q99
A	81	GLY	-	expression tag	UNP Q97Q99
A	82	PRO	-	expression tag	UNP Q97Q99
A	83	ASN	-	expression tag	UNP Q97Q99
B	64	MET	-	initiating methionine	UNP Q97Q99
B	65	ALA	-	expression tag	UNP Q97Q99
B	66	HIS	-	expression tag	UNP Q97Q99
B	67	HIS	-	expression tag	UNP Q97Q99
B	68	HIS	-	expression tag	UNP Q97Q99

Continued on next page...

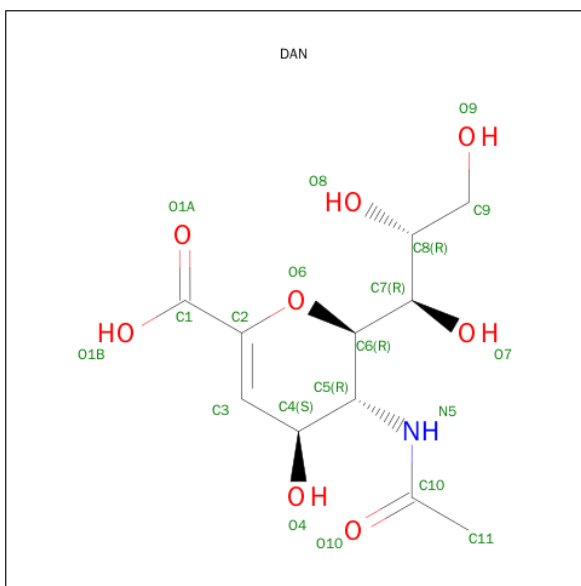
Chain	Residue	Modelled	Actual	Comment	Reference
B	69	HIS	-	expression tag	UNP Q97Q99
B	70	HIS	-	expression tag	UNP Q97Q99
B	71	HIS	-	expression tag	UNP Q97Q99
B	72	SER	-	expression tag	UNP Q97Q99
B	73	SER	-	expression tag	UNP Q97Q99
B	74	GLY	-	expression tag	UNP Q97Q99
B	75	LEU	-	expression tag	UNP Q97Q99
B	76	GLU	-	expression tag	UNP Q97Q99
B	77	VAL	-	expression tag	UNP Q97Q99
B	78	LEU	-	expression tag	UNP Q97Q99
B	79	PHE	-	expression tag	UNP Q97Q99
B	80	GLN	-	expression tag	UNP Q97Q99
B	81	GLY	-	expression tag	UNP Q97Q99
B	82	PRO	-	expression tag	UNP Q97Q99
B	83	ASN	-	expression tag	UNP Q97Q99

-
- Chemical structure of SLT (Sclerotolide) is shown. The molecule features a complex polycyclic core with multiple hydroxyl groups (OH) and an amide group (NH). The structure is labeled with atom identifiers (e.g., O16, C16, O15, C15(R), C14(R), C13(R), C12(R), C11(S), C10, O17, O11, C17, C18, O12, C2(R), C1(S), C3(S), C4(S), C5(R), O6, O5A, O6A, O1A, O2A, O3A, O1A) and stereochemical configurations (R/S) for the chiral centers.

Mol	Chain	Residues	Atoms				ZeroOcc	AltConf
2	A	1	Total 32	C 17	N 1	O 14	0	0
2	B	1	Total 32	C 17	N 1	O 14	0	0

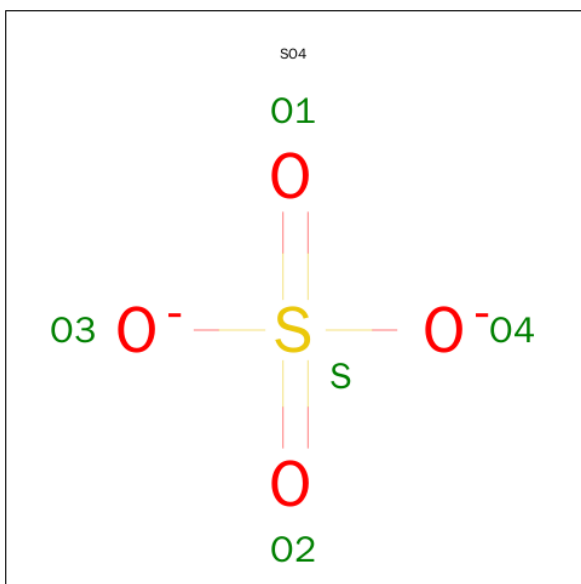
- 
- WORLD WIDE
PDB
PROTEIN DATA BANK

code: DAN) (formula: $C_{11}H_{17}NO_8$).



Mol	Chain	Residues	Atoms				ZeroOcc	AltConf
3	A	1	Total	C	N	O	0	0
			20	11	1	8		
3	B	1	Total	C	N	O	0	0
			20	11	1	8		

- Molecule 4 is SULFATE ION (three-letter code: SO4) (formula: O_4S).



Mol	Chain	Residues	Atoms			ZeroOcc	AltConf
4	A	1	Total	O	S	0	0
			5	4	1		

Continued on next page...

Continued from previous page...

Mol	Chain	Residues	Atoms			ZeroOcc	AltConf
4	A	1	Total	O	S	0	0
			5	4	1		
4	A	1	Total	O	S	0	0
			5	4	1		
4	A	1	Total	O	S	0	0
			5	4	1		
4	A	1	Total	O	S	0	0
			5	4	1		
4	B	1	Total	O	S	0	0
			5	4	1		
4	B	1	Total	O	S	0	0
			5	4	1		
4	B	1	Total	O	S	0	0
			5	4	1		
4	B	1	Total	O	S	0	0
			5	4	1		

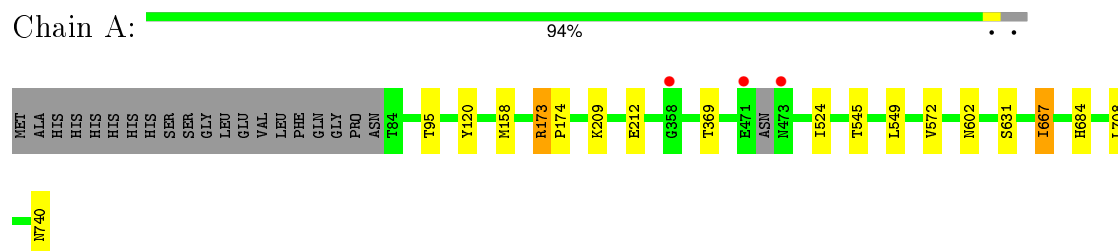
- Molecule 5 is water.

Mol	Chain	Residues	Atoms		ZeroOcc	AltConf
5	A	350	Total	O	0	0
			350	350		
5	B	371	Total	O	0	0
			371	371		

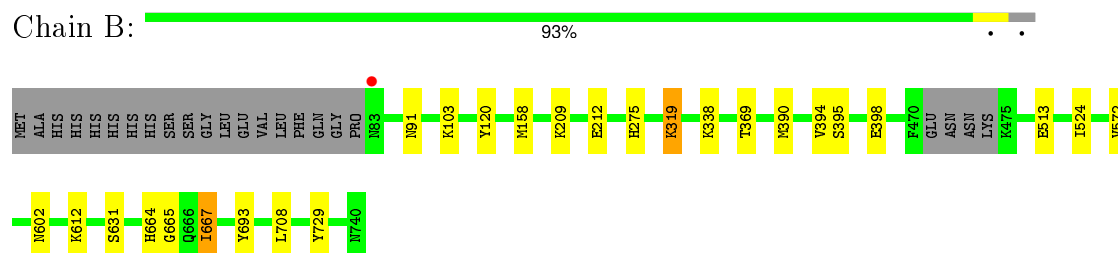
3 Residue-property plots

These plots are drawn for all protein, RNA and DNA chains in the entry. The first graphic for a chain summarises the proportions of errors displayed in the second graphic. The second graphic shows the sequence view annotated by issues in geometry and electron density. Residues are color-coded according to the number of geometric quality criteria for which they contain at least one outlier: green = 0, yellow = 1, orange = 2 and red = 3 or more. A red dot above a residue indicates a poor fit to the electron density ($RSRZ > 2$). Stretches of 2 or more consecutive residues without any outlier are shown as a green connector. Residues present in the sample, but not in the model, are shown in grey.

- Molecule 1: Putative neuraminidase



- Molecule 1: Putative neuraminidase



4 Data and refinement statistics

Property	Value	Source
Space group	P 21 21 21	Depositor
Cell constants a, b, c, α , β , γ	73.47Å 136.57Å 150.07Å 90.00° 90.00° 90.00°	Depositor
Resolution (Å)	75.04 – 2.27 75.03 – 2.27	Depositor EDS
% Data completeness (in resolution range)	99.5 (75.04-2.27) 99.5 (75.03-2.27)	Depositor EDS
R_{merge}	0.33	Depositor
R_{sym}	(Not available)	Depositor
$\langle I/\sigma(I) \rangle$ ¹	2.59 (at 2.27Å)	Xtriage
Refinement program	REFMAC	Depositor
R, R_{free}	0.218 , 0.269 0.224 , 0.273	Depositor DCC
R_{free} test set	3538 reflections (5.31%)	DCC
Wilson B-factor (Å ²)	17.5	Xtriage
Anisotropy	0.808	Xtriage
Bulk solvent k_{sol} (e/Å ³), B_{sol} (Å ²)	0.33 , 41.4	EDS
Estimated twinning fraction	No twinning to report.	Xtriage
L-test for twinning ²	$\langle L \rangle = 0.45$, $\langle L^2 \rangle = 0.28$	Xtriage
Outliers	3 of 70159 reflections (0.004%)	Xtriage
F_o, F_c correlation	0.95	EDS
Total number of atoms	11274	wwPDB-VP
Average B, all atoms (Å ²)	21.0	wwPDB-VP

Xtriage's analysis on translational NCS is as follows: *The analyses of the Patterson function reveals a significant off-origin peak that is 54.83 % of the origin peak, indicating pseudo translational symmetry. The chance of finding a peak of this or larger height randomly in a structure without pseudo translational symmetry is equal to 3.4541e-05. The detected translational NCS is most likely also responsible for the elevated intensity ratio.*

¹Intensities estimated from amplitudes.

²Theoretical values of $\langle |L| \rangle$, $\langle L^2 \rangle$ for acentric reflections are 0.5, 0.375 respectively for untwinned datasets, and 0.333, 0.2 for perfectly twinned datasets.

5 Model quality

5.1 Standard geometry

Bond lengths and bond angles in the following residue types are not validated in this section: SLT, DAN, SO4

The Z score for a bond length (or angle) is the number of standard deviations the observed value is removed from the expected value. A bond length (or angle) with $|Z| > 5$ is considered an outlier worth inspection. RMSZ is the root-mean-square of all Z scores of the bond lengths (or angles).

Mol	Chain	Bond lengths		Bond angles	
		RMSZ	# Z >5	RMSZ	# Z >5
1	A	0.51	0/5325	0.70	0/7215
1	B	0.51	0/5315	0.70	0/7203
All	All	0.51	0/10640	0.70	0/14418

There are no bond length outliers.

There are no bond angle outliers.

There are no chirality outliers.

There are no planarity outliers.

5.2 Too-close contacts

In the following table, the Non-H and H(model) columns list the number of non-hydrogen atoms and hydrogen atoms in the chain respectively. The H(added) column lists the number of hydrogen atoms added and optimized by MolProbity. The Clashes column lists the number of clashes within the asymmetric unit, whereas Symm-Clashes lists symmetry related clashes.

Mol	Chain	Non-H	H(model)	H(added)	Clashes	Symm-Clashes
1	A	5206	0	5089	8	0
1	B	5193	0	5076	14	0
2	A	32	0	27	0	0
2	B	32	0	27	0	0
3	A	20	0	16	0	0
3	B	20	0	16	0	0
4	A	25	0	0	0	0
4	B	25	0	0	0	0
5	A	350	0	0	0	0
5	B	371	0	0	3	0
All	All	11274	0	10251	21	0

The all-atom clashscore is defined as the number of clashes found per 1000 atoms (including hydrogen atoms). The all-atom clashscore for this structure is 1.

All (21) close contacts within the same asymmetric unit are listed below, sorted by their clash magnitude.

Atom-1	Atom-2	Interatomic distance (Å)	Clash overlap (Å)
1:B:390:MET:CE	1:B:394:VAL:HG12	2.29	0.61
1:B:319:LYS:HE3	5:B:923:HOH:O	2.02	0.57
1:B:91[B]:ASN:ND2	5:B:902:HOH:O	2.38	0.57
1:A:173:ARG:HD3	1:A:174:PRO:O	2.06	0.55
1:A:667:ILE:HD11	1:A:708:LEU:HD22	1.94	0.48
1:A:684:HIS:HA	1:A:740:ASN:HB2	1.93	0.48
1:B:667:ILE:HD11	1:B:708:LEU:HD22	1.94	0.47
1:B:524:ILE:HD12	1:B:572:VAL:HB	2.00	0.44
1:A:524:ILE:HD12	1:A:572:VAL:HB	2.00	0.44
1:B:602:ASN:HA	1:B:631:SER:O	2.18	0.43
1:B:338:LYS:NZ	5:B:906:HOH:O	2.46	0.42
1:B:209:LYS:NZ	1:B:212:GLU:OE1	2.45	0.41
1:A:602:ASN:HA	1:A:631:SER:O	2.20	0.41
1:A:545:THR:HA	1:B:612:LYS:HB2	2.01	0.41
1:B:319:LYS:C	1:B:319:LYS:CD	2.90	0.41
1:B:120:TYR:C	1:B:120:TYR:CD1	2.93	0.41
1:B:275:HIS:HD2	1:B:729:TYR:O	2.04	0.40
1:B:665:GLY:HA3	1:B:693:TYR:CD2	2.55	0.40
1:A:120:TYR:C	1:A:120:TYR:CD1	2.94	0.40
1:A:209:LYS:NZ	1:A:212:GLU:OE1	2.47	0.40
1:B:395:SER:OG	1:B:398:GLU:OE1	2.27	0.40

There are no symmetry-related clashes.

5.3 Torsion angles [i](#)

5.3.1 Protein backbone [i](#)

In the following table, the Percentiles column shows the percent Ramachandran outliers of the chain as a percentile score with respect to all X-ray entries followed by that with respect to entries of similar resolution.

The Analysed column shows the number of residues for which the backbone conformation was analysed, and the total number of residues.

Mol	Chain	Analysed	Favoured	Allowed	Outliers	Percentiles	
1	A	653/677 (96%)	632 (97%)	21 (3%)	0	100	100

Continued on next page...

Continued from previous page...

Mol	Chain	Analysed	Favoured	Allowed	Outliers	Percentiles	
1	B	652/677 (96%)	630 (97%)	22 (3%)	0	100	100
All	All	1305/1354 (96%)	1262 (97%)	43 (3%)	0	100	100

There are no Ramachandran outliers to report.

5.3.2 Protein sidechains ⓘ

In the following table, the Percentiles column shows the percent sidechain outliers of the chain as a percentile score with respect to all X-ray entries followed by that with respect to entries of similar resolution.

The Analysed column shows the number of residues for which the sidechain conformation was analysed, and the total number of residues.

Mol	Chain	Analysed	Rotameric	Outliers	Percentiles	
1	A	571/588 (97%)	565 (99%)	6 (1%)	80	89
1	B	570/588 (97%)	563 (99%)	7 (1%)	78	88
All	All	1141/1176 (97%)	1128 (99%)	13 (1%)	80	89

All (13) residues with a non-rotameric sidechain are listed below:

Mol	Chain	Res	Type
1	A	95	THR
1	A	158	MET
1	A	173	ARG
1	A	369	THR
1	A	549	LEU
1	A	667	ILE
1	B	103	LYS
1	B	158	MET
1	B	319	LYS
1	B	369	THR
1	B	513	GLU
1	B	664	HIS
1	B	667	ILE

Some sidechains can be flipped to improve hydrogen bonding and reduce clashes. All (4) such sidechains are listed below:

Mol	Chain	Res	Type
1	A	275	HIS
1	B	275	HIS
1	B	451	ASN
1	B	740	ASN

5.3.3 RNA [i](#)

There are no RNA molecules in this entry.

5.4 Non-standard residues in protein, DNA, RNA chains [i](#)

There are no non-standard protein/DNA/RNA residues in this entry.

5.5 Carbohydrates [i](#)

There are no carbohydrates in this entry.

5.6 Ligand geometry [i](#)

14 ligands are modelled in this entry.

In the following table, the Counts columns list the number of bonds (or angles) for which Mogul statistics could be retrieved, the number of bonds (or angles) that are observed in the model and the number of bonds (or angles) that are defined in the chemical component dictionary. The Link column lists molecule types, if any, to which the group is linked. The Z score for a bond length (or angle) is the number of standard deviations the observed value is removed from the expected value. A bond length (or angle) with $|Z| > 2$ is considered an outlier worth inspection. RMSZ is the root-mean-square of all Z scores of the bond lengths (or angles).

Mol	Type	Chain	Res	Link	Bond lengths			Bond angles		
					Counts	RMSZ	# Z > 2	Counts	RMSZ	# Z > 2
2	SLT	A	1001	-	29,33,45	1.12	2 (6%)	33,49,67	1.57	6 (18%)
3	DAN	A	1002	-	17,20,20	1.64	3 (17%)	19,28,28	1.16	2 (10%)
4	SO4	A	1003	-	4,4,4	0.41	0	6,6,6	0.28	0
4	SO4	A	1004	-	4,4,4	0.39	0	6,6,6	0.16	0
4	SO4	A	1005	-	4,4,4	0.39	0	6,6,6	0.24	0
4	SO4	A	1006	-	4,4,4	0.39	0	6,6,6	0.33	0
4	SO4	A	1007	-	4,4,4	0.39	0	6,6,6	0.13	0
2	SLT	B	801	-	29,33,45	1.05	2 (6%)	33,49,67	1.59	9 (27%)
3	DAN	B	802	-	17,20,20	1.61	3 (17%)	19,28,28	1.18	4 (21%)
4	SO4	B	803	-	4,4,4	0.41	0	6,6,6	0.36	0

Mol	Type	Chain	Res	Link	Bond lengths			Bond angles		
					Counts	RMSZ	# Z > 2	Counts	RMSZ	# Z > 2
4	SO4	B	804	-	4,4,4	0.50	0	6,6,6	0.13	0
4	SO4	B	805	-	4,4,4	0.41	0	6,6,6	0.14	0
4	SO4	B	806	-	4,4,4	0.44	0	6,6,6	0.29	0
4	SO4	B	807	-	4,4,4	0.47	0	6,6,6	0.12	0

In the following table, the Chirals column lists the number of chiral outliers, the number of chiral centers analysed, the number of these observed in the model and the number defined in the chemical component dictionary. Similar counts are reported in the Torsion and Rings columns. '-' means no outliers of that kind were identified.

Mol	Type	Chain	Res	Link	Chirals	Torsions	Rings
2	SLT	A	1001	-	-	1/19/65/91	0/2/2/3
3	DAN	A	1002	-	-	0/14/34/34	0/1/1/1
4	SO4	A	1003	-	-	0/0/0/0	0/0/0/0
4	SO4	A	1004	-	-	0/0/0/0	0/0/0/0
4	SO4	A	1005	-	-	0/0/0/0	0/0/0/0
4	SO4	A	1006	-	-	0/0/0/0	0/0/0/0
4	SO4	A	1007	-	-	0/0/0/0	0/0/0/0
2	SLT	B	801	-	-	0/19/65/91	0/2/2/3
3	DAN	B	802	-	-	0/14/34/34	0/1/1/1
4	SO4	B	803	-	-	0/0/0/0	0/0/0/0
4	SO4	B	804	-	-	0/0/0/0	0/0/0/0
4	SO4	B	805	-	-	0/0/0/0	0/0/0/0
4	SO4	B	806	-	-	0/0/0/0	0/0/0/0
4	SO4	B	807	-	-	0/0/0/0	0/0/0/0

All (10) bond length outliers are listed below:

Mol	Chain	Res	Type	Atoms	Z	Observed(Å)	Ideal(Å)
3	A	1002	DAN	C4-C3	2.10	1.53	1.50
3	B	802	DAN	C4-C3	2.28	1.53	1.50
2	B	801	SLT	C10-C9	2.34	1.54	1.52
2	A	1001	SLT	C10-C9	2.78	1.54	1.52
2	B	801	SLT	O9-C3	2.85	1.45	1.42
3	A	1002	DAN	C3-C2	2.89	1.36	1.32
3	B	802	DAN	C3-C2	2.96	1.36	1.32
2	A	1001	SLT	O9-C3	3.76	1.46	1.42
3	A	1002	DAN	O6-C2	4.47	1.46	1.37
3	B	802	DAN	O6-C2	4.58	1.46	1.37

All (21) bond angle outliers are listed below:

Mol	Chain	Res	Type	Atoms	Z	Observed(°)	Ideal(°)
2	A	1001	SLT	O2-C2-C1	-3.21	102.70	109.74
3	B	802	DAN	O6-C2-C3	-2.75	120.27	124.21
3	A	1002	DAN	O6-C2-C3	-2.58	120.52	124.21
2	B	801	SLT	O2-C2-C1	-2.49	104.28	109.74
2	A	1001	SLT	O16-C16-C15	-2.48	105.57	111.07
2	B	801	SLT	O9-C3-C4	-2.19	105.37	109.97
3	B	802	DAN	C6-C5-C4	-2.03	107.47	111.08
2	B	801	SLT	O16-C16-C15	-2.03	106.58	111.07
2	A	1001	SLT	C13-C12-N12	2.01	114.49	111.06
2	B	801	SLT	O15-C15-C14	2.02	114.16	108.96
2	A	1001	SLT	O15-C15-C14	2.03	114.18	108.96
3	B	802	DAN	O10-C10-N5	2.07	126.06	121.84
3	A	1002	DAN	O10-C10-N5	2.09	126.10	121.84
2	B	801	SLT	O11-C11-C10	2.09	114.58	109.80
3	B	802	DAN	C6-O6-C2	2.09	118.96	114.58
2	B	801	SLT	O9-C3-C2	2.23	114.64	109.97
2	B	801	SLT	C2-C3-C4	2.80	114.12	110.93
2	A	1001	SLT	C2-C3-C4	2.95	114.30	110.93
2	B	801	SLT	C3-C4-C5	3.41	117.44	109.64
2	A	1001	SLT	O9-C3-C2	4.06	118.48	109.97
2	B	801	SLT	C1-C2-C3	4.09	117.36	110.70

There are no chirality outliers.

All (1) torsion outliers are listed below:

Mol	Chain	Res	Type	Atoms
2	A	1001	SLT	C9-O9-C3-C2

There are no ring outliers.

No monomer is involved in short contacts.

5.7 Other polymers [i](#)

There are no such residues in this entry.

5.8 Polymer linkage issues [i](#)

There are no chain breaks in this entry.

6 Fit of model and data [i](#)

6.1 Protein, DNA and RNA chains [i](#)

In the following table, the column labelled ‘#RSRZ> 2’ contains the number (and percentage) of RSRZ outliers, followed by percent RSRZ outliers for the chain as percentile scores relative to all X-ray entries and entries of similar resolution. The OWAB column contains the minimum, median, 95th percentile and maximum values of the occupancy-weighted average B-factor per residue. The column labelled ‘Q< 0.9’ lists the number of (and percentage) of residues with an average occupancy less than 0.9.

Mol	Chain	Analysed	<RSRZ>	#RSRZ>2		OWAB(Å ²)	Q<0.9
1	A	656/677 (96%)	-0.37	3 (0%)	91 94	9, 19, 38, 77	0
1	B	654/677 (96%)	-0.39	1 (0%)	95 97	8, 19, 36, 56	0
All	All	1310/1354 (96%)	-0.38	4 (0%)	94 96	8, 19, 37, 77	0

All (4) RSRZ outliers are listed below:

Mol	Chain	Res	Type	RSRZ
1	A	471	GLU	4.2
1	A	473	ASN	2.8
1	B	83	ASN	2.8
1	A	358	GLY	2.0

6.2 Non-standard residues in protein, DNA, RNA chains [i](#)

There are no non-standard protein/DNA/RNA residues in this entry.

6.3 Carbohydrates [i](#)

There are no carbohydrates in this entry.

6.4 Ligands [i](#)

In the following table, the Atoms column lists the number of modelled atoms in the group and the number defined in the chemical component dictionary. LLDF column lists the quality of electron density of the group with respect to its neighbouring residues in protein, DNA or RNA chains. The B-factors column lists the minimum, median, 95th percentile and maximum values of B factors of atoms in the group. The column labelled ‘Q< 0.9’ lists the number of atoms with occupancy less than 0.9.

Mol	Type	Chain	Res	Atoms	RSCC	RSR	LLDF	B-factors(\AA^2)	Q<0.9
4	SO4	A	1003	5/5	0.93	0.29	10.80	53,57,75,75	0
4	SO4	B	805	5/5	0.92	0.17	10.27	63,64,77,84	0
4	SO4	A	1005	5/5	0.94	0.21	10.18	66,70,79,80	0
4	SO4	B	803	5/5	0.92	0.23	5.06	43,53,68,79	0
4	SO4	A	1007	5/5	0.86	0.24	4.12	81,89,95,104	0
3	DAN	B	802	20/20	0.91	0.18	3.36	24,32,35,39	0
4	SO4	B	806	5/5	0.95	0.20	3.21	47,52,55,62	0
2	SLT	B	801	32/43	0.88	0.15	3.07	19,30,51,55	0
4	SO4	B	807	5/5	0.81	0.25	2.80	63,75,88,97	0
4	SO4	A	1006	5/5	0.91	0.20	1.73	48,51,65,66	0
3	DAN	A	1002	20/20	0.92	0.17	1.64	19,32,43,45	0
2	SLT	A	1001	32/43	0.91	0.13	0.97	17,28,52,57	0
4	SO4	B	804	5/5	0.89	0.26	-	84,88,99,100	0
4	SO4	A	1004	5/5	0.81	0.32	-	79,90,99,104	0

6.5 Other polymers [i](#)

There are no such residues in this entry.