



Full wwPDB X-ray Structure Validation Report ⓘ

Feb 19, 2016 – 06:25 PM GMT

PDB ID : 2Z6J
Title : Crystal Structure of *S. pneumoniae* Enoyl-Acyl Carrier Protein Reductase (FabK) in Complex with an Inhibitor
Authors : Saito, J.; Yamada, M.; Watanabe, T.; Takeuchi, Y.
Deposited on : 2007-08-01
Resolution : 2.30 Å(reported)

This is a Full wwPDB X-ray Structure Validation Report for a publicly released PDB entry.
We welcome your comments at validation@mail.wwpdb.org
A user guide is available at
<http://wwpdb.org/validation/2016/XrayValidationReportHelp>
with specific help available everywhere you see the ⓘ symbol.

The following versions of software and data (see [references ⓘ](#)) were used in the production of this report:

MolProbity : 4.02b-467
Mogul : 1.7.1 (RC1), CSD as537be (2016)
Xtriage (Phenix) : 1.9-1692
EDS : rb-20026982
Percentile statistics : 20151230.v01 (using entries in the PDB archive December 30th 2015)
Refmac : 5.8.0135
CCP4 : 6.5.0
Ideal geometry (proteins) : Engh & Huber (2001)
Ideal geometry (DNA, RNA) : Parkinson et al. (1996)
Validation Pipeline (wwPDB-VP) : rb-20026982

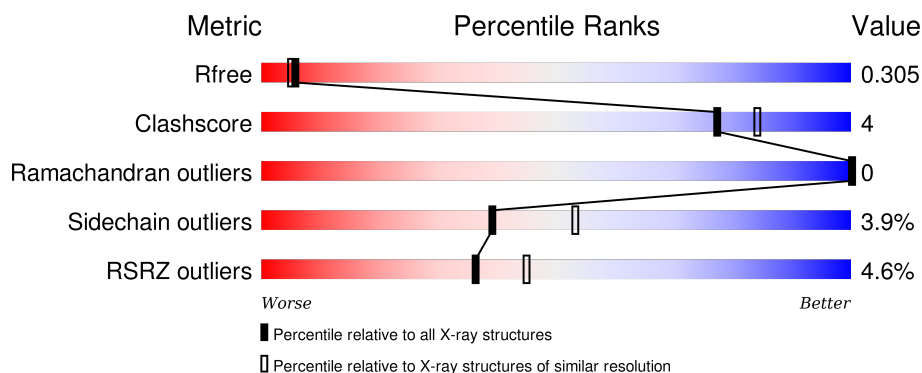
1 Overall quality at a glance

The following experimental techniques were used to determine the structure:

X-RAY DIFFRACTION

The reported resolution of this entry is 2.30 Å.

Percentile scores (ranging between 0-100) for global validation metrics of the entry are shown in the following graphic. The table shows the number of entries on which the scores are based.



Metric	Whole archive (#Entries)	Similar resolution (#Entries, resolution range(Å))
R_{free}	91344	3852 (2.30-2.30)
Clashscore	102246	4452 (2.30-2.30)
Ramachandran outliers	100387	4410 (2.30-2.30)
Sidechain outliers	100360	4409 (2.30-2.30)
RSRZ outliers	91569	3857 (2.30-2.30)

The table below summarises the geometric issues observed across the polymeric chains and their fit to the electron density. The red, orange, yellow and green segments on the lower bar indicate the fraction of residues that contain outliers for ≥ 3 , 2, 1 and 0 types of geometric quality criteria. A grey segment represents the fraction of residues that are not modelled. The numeric value for each fraction is indicated below the corresponding segment, with a dot representing fractions $\leq 5\%$. The upper red bar (where present) indicates the fraction of residues that have poor fit to the electron density. The numeric value is given above the bar.

Mol	Chain	Length	Quality of chain
1	A	332	 4% 83% 9% 8%
1	B	332	 5% 80% 12% 8%

2 Entry composition

There are 6 unique types of molecules in this entry. The entry contains 4719 atoms, of which 0 are hydrogens and 0 are deuteriums.

In the tables below, the ZeroOcc column contains the number of atoms modelled with zero occupancy, the AltConf column contains the number of residues with at least one atom in alternate conformation and the Trace column contains the number of residues modelled with at most 2 atoms.

- Molecule 1 is a protein called Trans-2-enoyl-ACP reductase II.

Mol	Chain	Residues	Atoms					ZeroOcc	AltConf	Trace
1	A	307	Total	C	N	O	S	0	0	0
			2255	1429	385	431	10			
1	B	307	Total	C	N	O	S	0	0	0
			2252	1428	383	431	10			

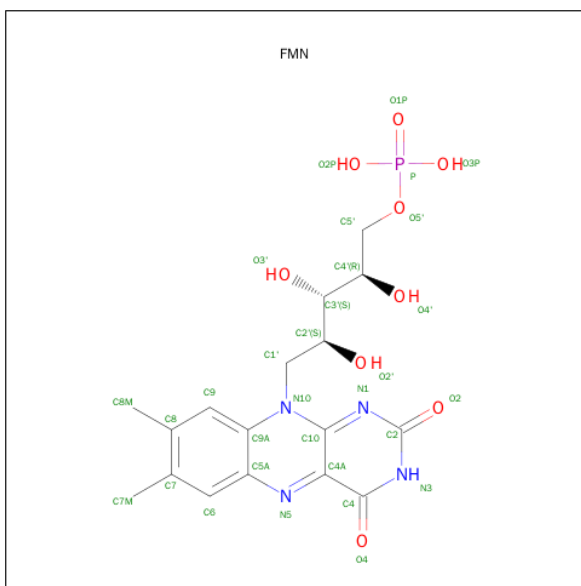
There are 16 discrepancies between the modelled and reference sequences:

Chain	Residue	Modelled	Actual	Comment	Reference
A	325	LEU	-	EXPRESSION TAG	UNP Q9FBC5
A	326	GLU	-	EXPRESSION TAG	UNP Q9FBC5
A	327	HIS	-	EXPRESSION TAG	UNP Q9FBC5
A	328	HIS	-	EXPRESSION TAG	UNP Q9FBC5
A	329	HIS	-	EXPRESSION TAG	UNP Q9FBC5
A	330	HIS	-	EXPRESSION TAG	UNP Q9FBC5
A	331	HIS	-	EXPRESSION TAG	UNP Q9FBC5
A	332	HIS	-	EXPRESSION TAG	UNP Q9FBC5
B	325	LEU	-	EXPRESSION TAG	UNP Q9FBC5
B	326	GLU	-	EXPRESSION TAG	UNP Q9FBC5
B	327	HIS	-	EXPRESSION TAG	UNP Q9FBC5
B	328	HIS	-	EXPRESSION TAG	UNP Q9FBC5
B	329	HIS	-	EXPRESSION TAG	UNP Q9FBC5
B	330	HIS	-	EXPRESSION TAG	UNP Q9FBC5
B	331	HIS	-	EXPRESSION TAG	UNP Q9FBC5
B	332	HIS	-	EXPRESSION TAG	UNP Q9FBC5

- Molecule 2 is CALCIUM ION (three-letter code: CA) (formula: Ca).

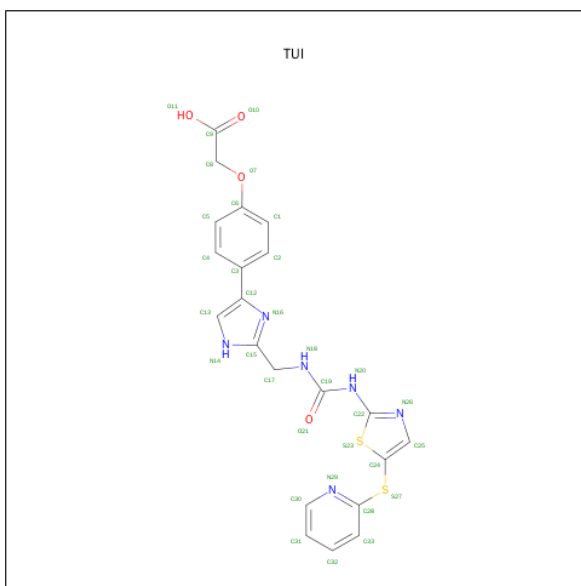
Mol	Chain	Residues	Atoms		ZeroOcc	AltConf
2	B	2	Total	Ca	0	0
			2	2		
2	A	2	Total	Ca	0	0
			2	2		

- Molecule 3 is FLAVIN MONONUCLEOTIDE (three-letter code: FMN) (formula: $C_{17}H_{21}N_4O_9P$).



Mol	Chain	Residues	Atoms					ZeroOcc	AltConf
3	A	1	Total 31	C 17	N 4	O 9	P 1	0	0
3	B	1	Total 31	C 17	N 4	O 9	P 1	0	0

- Molecule 4 is 2-(4-(2-((3-(5-(PYRIDIN-2-YLTHIO)THIAZOL-2-YL)UREIDO)METHYL)-1H-IMIDAZOL-4-YL)PHENOXY)ACETIC ACID (three-letter code: TUI) (formula: $C_{21}H_{18}N_6O_4S_2$).



Mol	Chain	Residues	Atoms					ZeroOcc	AltConf
4	A	1	Total	C	N	O	S	0	0
			33	21	6	4	2		
4	B	1	Total	C	N	O	S	0	0
			33	21	6	4	2		

- Molecule 5 is (4S)-2-METHYL-2,4-PENTANEDIOL (three-letter code: MPD) (formula: $C_6H_{14}O_2$).



Mol	Chain	Residues	Atoms			ZeroOcc	AltConf
5	A	1	Total	C	O	0	0
			8	6	2		

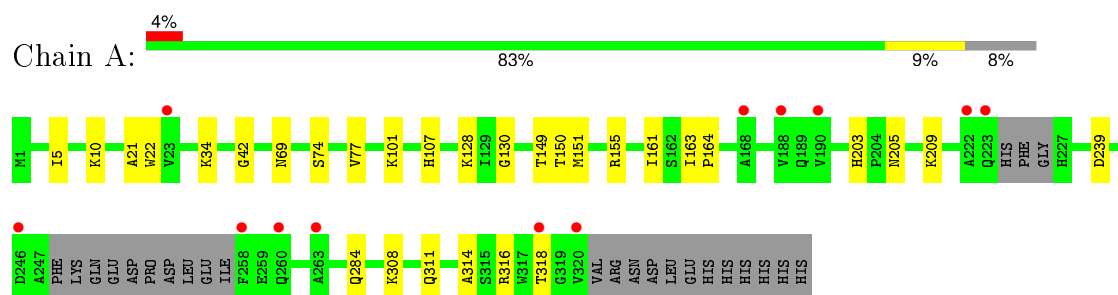
- Molecule 6 is water.

Mol	Chain	Residues	Atoms		ZeroOcc	AltConf
6	A	41	Total	O	0	0
			41	41		
6	B	31	Total	O	0	0
			31	31		

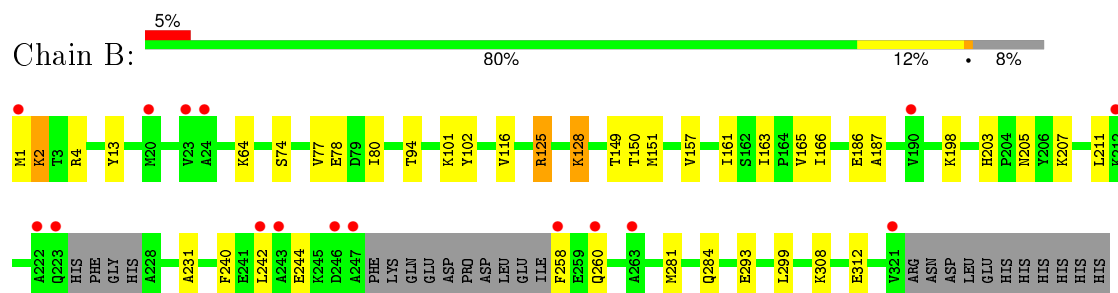
3 Residue-property plots [i](#)

These plots are drawn for all protein, RNA and DNA chains in the entry. The first graphic for a chain summarises the proportions of errors displayed in the second graphic. The second graphic shows the sequence view annotated by issues in geometry and electron density. Residues are color-coded according to the number of geometric quality criteria for which they contain at least one outlier: green = 0, yellow = 1, orange = 2 and red = 3 or more. A red dot above a residue indicates a poor fit to the electron density ($RSRZ > 2$). Stretches of 2 or more consecutive residues without any outlier are shown as a green connector. Residues present in the sample, but not in the model, are shown in grey.

• Molecule 1: Trans-2-enoyl-ACP reductase II



• Molecule 1: Trans-2-enoyl-ACP reductase II



4 Data and refinement statistics

Property	Value	Source
Space group	P 1 21 1	Depositor
Cell constants a, b, c, α , β , γ	50.63 Å 126.48 Å 53.52 Å 90.00° 112.04° 90.00°	Depositor
Resolution (Å)	29.08 – 2.30 29.08 – 2.30	Depositor EDS
% Data completeness (in resolution range)	91.9 (29.08-2.30) 91.9 (29.08-2.30)	Depositor EDS
R_{merge}	0.08	Depositor
R_{sym}	(Not available)	Depositor
$\langle I/\sigma(I) \rangle$ ¹	3.94 (at 2.31 Å)	Xtriage
Refinement program	REFMAC 5.2.0005	Depositor
R, R_{free}	0.249 , 0.306 0.250 , 0.305	Depositor DCC
R_{free} test set	1288 reflections (5.33%)	DCC
Wilson B-factor (Å ²)	25.5	Xtriage
Anisotropy	0.190	Xtriage
Bulk solvent k_{sol} (e/Å ³), B_{sol} (Å ²)	0.40 , 49.9	EDS
Estimated twinning fraction	No twinning to report.	Xtriage
L-test for twinning ²	$\langle L \rangle = 0.52$, $\langle L^2 \rangle = 0.36$	Xtriage
Outliers	1 of 25442 reflections (0.004%)	Xtriage
F_o, F_c correlation	0.90	EDS
Total number of atoms	4719	wwPDB-VP
Average B, all atoms (Å ²)	23.0	wwPDB-VP

Xtriage's analysis on translational NCS is as follows: *The largest off-origin peak in the Patterson function is 7.26% of the height of the origin peak. No significant pseudotranslation is detected.*

¹ Intensities estimated from amplitudes.

² Theoretical values of $\langle |L| \rangle$, $\langle L^2 \rangle$ for acentric reflections are 0.5, 0.375 respectively for untwinned datasets, and 0.333, 0.2 for perfectly twinned datasets.

5 Model quality

5.1 Standard geometry

Bond lengths and bond angles in the following residue types are not validated in this section: FMN, TUI, CA, MPD

The Z score for a bond length (or angle) is the number of standard deviations the observed value is removed from the expected value. A bond length (or angle) with $|Z| > 5$ is considered an outlier worth inspection. RMSZ is the root-mean-square of all Z scores of the bond lengths (or angles).

Mol	Chain	Bond lengths		Bond angles	
		RMSZ	# Z >5	RMSZ	# Z >5
1	A	0.49	0/2283	0.59	0/3078
1	B	0.48	0/2279	0.59	0/3073
All	All	0.49	0/4562	0.59	0/6151

There are no bond length outliers.

There are no bond angle outliers.

There are no chirality outliers.

There are no planarity outliers.

5.2 Too-close contacts

In the following table, the Non-H and H(model) columns list the number of non-hydrogen atoms and hydrogen atoms in the chain respectively. The H(added) column lists the number of hydrogen atoms added and optimized by MolProbity. The Clashes column lists the number of clashes within the asymmetric unit, whereas Symm-Clashes lists symmetry related clashes.

Mol	Chain	Non-H	H(model)	H(added)	Clashes	Symm-Clashes
1	A	2255	0	2321	15	0
1	B	2252	0	2323	24	0
2	A	2	0	0	0	0
2	B	2	0	0	0	0
3	A	31	0	19	0	0
3	B	31	0	19	0	0
4	A	33	0	17	0	0
4	B	33	0	17	1	0
5	A	8	0	14	1	0
6	A	41	0	0	0	0
6	B	31	0	0	2	0
All	All	4719	0	4730	35	0

The all-atom clashscore is defined as the number of clashes found per 1000 atoms (including hydrogen atoms). The all-atom clashscore for this structure is 4.

All (35) close contacts within the same asymmetric unit are listed below, sorted by their clash magnitude.

Atom-1	Atom-2	Interatomic distance (Å)	Clash overlap (Å)
1:A:203:HIS:HD2	1:A:205:ASN:H	1.32	0.76
1:B:203:HIS:HD2	1:B:205:ASN:H	1.36	0.72
1:A:314:ALA:O	1:A:318:THR:HG23	1.89	0.72
1:A:161:ILE:HD12	1:A:163:ILE:HG13	1.71	0.71
1:A:284:GLN:HE22	1:B:149:THR:H	1.40	0.67
1:A:239:ASP:OD2	5:A:701:MPD:H13	1.95	0.66
1:B:125:ARG:HH11	1:B:128:LYS:HE2	1.65	0.60
1:A:149:THR:H	1:B:284:GLN:HE22	1.49	0.59
1:B:80:ILE:HD11	6:B:629:HOH:O	2.02	0.59
1:B:161:ILE:HD12	1:B:163:ILE:HG13	1.87	0.57
1:A:161:ILE:HD12	1:A:163:ILE:CG1	2.35	0.57
1:A:74:SER:O	1:A:77:VAL:HG23	2.07	0.55
1:B:80:ILE:CD1	6:B:629:HOH:O	2.54	0.55
1:A:316:ARG:O	1:B:1:MET:HG3	2.08	0.54
1:B:94:THR:O	1:B:116:VAL:HG23	2.08	0.53
1:B:203:HIS:CD2	1:B:205:ASN:H	2.22	0.52
1:B:78:GLU:OE1	1:B:102:TYR:OH	2.23	0.51
1:B:166:ILE:HG12	1:B:187:ALA:HB3	1.93	0.51
1:A:5:ILE:HD11	1:A:164:PRO:HB2	1.96	0.47
1:B:198:LYS:N	1:B:293:GLU:O	2.47	0.47
1:B:157:VAL:HG12	1:B:165:VAL:HG21	1.97	0.46
1:B:308:LYS:HE2	1:B:312:GLU:OE2	2.15	0.46
1:B:74:SER:HB3	1:B:77:VAL:HG23	1.97	0.46
1:B:161:ILE:HD12	1:B:163:ILE:CG1	2.46	0.45
1:A:42:GLY:HA2	1:A:69:ASN:HB3	1.99	0.44
1:B:231:ALA:HA	1:B:281:MET:HA	1.98	0.44
4:B:502:TUI:O21	4:B:502:TUI:S23	2.76	0.44
1:B:207:LYS:O	1:B:211:LEU:HG	2.17	0.43
1:B:1:MET:HG2	1:B:2:LYS:N	2.33	0.43
1:B:13:TYR:HD1	1:B:299:LEU:HD22	1.83	0.43
1:A:150:THR:HB	1:B:151:MET:HG3	2.01	0.42
1:A:107:HIS:HE1	1:A:130:GLY:O	2.01	0.42
1:A:21:ALA:O	1:A:22:TRP:HB2	2.20	0.41
1:B:4:ARG:HB2	1:B:186:GLU:OE2	2.21	0.41
1:A:151:MET:HG3	1:B:150:THR:HB	2.03	0.41

There are no symmetry-related clashes.

5.3 Torsion angles

5.3.1 Protein backbone

In the following table, the Percentiles column shows the percent Ramachandran outliers of the chain as a percentile score with respect to all X-ray entries followed by that with respect to entries of similar resolution.

The Analysed column shows the number of residues for which the backbone conformation was analysed, and the total number of residues.

Mol	Chain	Analysed	Favoured	Allowed	Outliers	Percentiles	
1	A	301/332 (91%)	294 (98%)	7 (2%)	0	100	100
1	B	301/332 (91%)	291 (97%)	10 (3%)	0	100	100
All	All	602/664 (91%)	585 (97%)	17 (3%)	0	100	100

There are no Ramachandran outliers to report.

5.3.2 Protein sidechains

In the following table, the Percentiles column shows the percent sidechain outliers of the chain as a percentile score with respect to all X-ray entries followed by that with respect to entries of similar resolution.

The Analysed column shows the number of residues for which the sidechain conformation was analysed, and the total number of residues.

Mol	Chain	Analysed	Rotameric	Outliers	Percentiles	
1	A	228/252 (90%)	220 (96%)	8 (4%)	43	58
1	B	228/252 (90%)	218 (96%)	10 (4%)	35	46
All	All	456/504 (90%)	438 (96%)	18 (4%)	39	53

All (18) residues with a non-rotameric sidechain are listed below:

Mol	Chain	Res	Type
1	A	10	LYS
1	A	34	LYS
1	A	101	LYS
1	A	128	LYS
1	A	155	ARG
1	A	209	LYS
1	A	308	LYS
1	A	311	GLN

Continued on next page...

Continued from previous page...

Mol	Chain	Res	Type
1	B	2	LYS
1	B	64	LYS
1	B	101	LYS
1	B	125	ARG
1	B	128	LYS
1	B	240	PHE
1	B	242	LEU
1	B	244	GLU
1	B	258	PHE
1	B	260	GLN

Some sidechains can be flipped to improve hydrogen bonding and reduce clashes. All (6) such sidechains are listed below:

Mol	Chain	Res	Type
1	A	203	HIS
1	A	260	GLN
1	A	284	GLN
1	B	203	HIS
1	B	260	GLN
1	B	284	GLN

5.3.3 RNA [i](#)

There are no RNA molecules in this entry.

5.4 Non-standard residues in protein, DNA, RNA chains [i](#)

There are no non-standard protein/DNA/RNA residues in this entry.

5.5 Carbohydrates [i](#)

There are no carbohydrates in this entry.

5.6 Ligand geometry [i](#)

Of 9 ligands modelled in this entry, 4 are monoatomic - leaving 5 for Mogul analysis.

In the following table, the Counts columns list the number of bonds (or angles) for which Mogul statistics could be retrieved, the number of bonds (or angles) that are observed in the model and

the number of bonds (or angles) that are defined in the chemical component dictionary. The Link column lists molecule types, if any, to which the group is linked. The Z score for a bond length (or angle) is the number of standard deviations the observed value is removed from the expected value. A bond length (or angle) with $|Z| > 2$ is considered an outlier worth inspection. RMSZ is the root-mean-square of all Z scores of the bond lengths (or angles).

Mol	Type	Chain	Res	Link	Bond lengths			Bond angles		
					Counts	RMSZ	# Z > 2	Counts	RMSZ	# Z > 2
3	FMN	A	401	-	32,33,33	1.32	4 (12%)	34,50,50	1.64	7 (20%)
4	TUI	A	501	-	26,36,36	1.81	3 (11%)	30,48,48	1.39	5 (16%)
5	MPD	A	701	-	6,7,7	0.32	0	6,10,10	0.58	0
3	FMN	B	402	-	32,33,33	1.26	5 (15%)	34,50,50	1.75	5 (14%)
4	TUI	B	502	-	26,36,36	1.93	3 (11%)	30,48,48	1.56	5 (16%)

In the following table, the Chirals column lists the number of chiral outliers, the number of chiral centers analysed, the number of these observed in the model and the number defined in the chemical component dictionary. Similar counts are reported in the Torsion and Rings columns. '-' means no outliers of that kind were identified.

Mol	Type	Chain	Res	Link	Chirals	Torsions	Rings
3	FMN	A	401	-	-	0/18/18/18	0/3/3/3
4	TUI	A	501	-	-	0/14/22/22	0/4/4/4
5	MPD	A	701	-	-	0/5/5/5	0/0/0/0
3	FMN	B	402	-	-	0/18/18/18	0/3/3/3
4	TUI	B	502	-	-	0/14/22/22	0/4/4/4

All (15) bond length outliers are listed below:

Mol	Chain	Res	Type	Atoms	Z	Observed(Å)	Ideal(Å)
4	A	501	TUI	C25-N26	-6.43	1.26	1.36
4	B	502	TUI	C25-N26	-6.40	1.26	1.36
4	B	502	TUI	C28-S27	-5.76	1.69	1.77
4	A	501	TUI	C28-S27	-5.09	1.70	1.77
4	B	502	TUI	C24-S23	-2.82	1.67	1.72
4	A	501	TUI	C24-S23	-2.35	1.68	1.72
3	B	402	FMN	C10-N1	2.44	1.39	1.35
3	B	402	FMN	C5A-N5	2.45	1.39	1.35
3	A	401	FMN	C1'-N10	2.83	1.51	1.48
3	B	402	FMN	C4-N3	2.93	1.38	1.33
3	B	402	FMN	C1'-N10	2.95	1.51	1.48
3	A	401	FMN	C5A-N5	3.28	1.40	1.35
3	B	402	FMN	C4A-N5	3.29	1.38	1.33
3	A	401	FMN	C4A-N5	3.32	1.38	1.33
3	A	401	FMN	C4-N3	3.46	1.39	1.33

All (22) bond angle outliers are listed below:

Mol	Chain	Res	Type	Atoms	Z	Observed(°)	Ideal(°)
4	B	502	TUI	C22-N20-C19	-5.02	123.84	130.14
3	A	401	FMN	N3-C2-N1	-4.33	120.40	127.69
3	B	402	FMN	N3-C2-N1	-4.12	120.75	127.69
4	A	501	TUI	C22-N20-C19	-3.33	125.96	130.14
3	B	402	FMN	C4A-C4-N3	-2.69	120.01	123.52
3	A	401	FMN	C4A-C4-N3	-2.51	120.24	123.52
4	B	502	TUI	C13-C12-C3	-2.42	126.09	129.49
4	A	501	TUI	C13-C12-C3	-2.42	126.10	129.49
3	A	401	FMN	C5A-C9A-N10	2.01	119.08	117.58
4	B	502	TUI	C30-N29-C28	2.08	121.49	117.31
4	A	501	TUI	N20-C19-N18	2.11	117.36	113.91
4	A	501	TUI	C3-C12-N16	2.17	123.54	120.58
3	A	401	FMN	C1'-N10-C9A	2.20	121.38	118.83
4	A	501	TUI	C30-N29-C28	2.25	121.84	117.31
3	A	401	FMN	C4-C4A-N5	2.36	121.56	118.70
4	B	502	TUI	N20-C19-N18	2.44	117.90	113.91
4	B	502	TUI	C3-C12-N16	2.67	124.22	120.58
3	A	401	FMN	C4A-N5-C5A	3.30	120.61	116.72
3	B	402	FMN	C4A-N5-C5A	3.45	120.79	116.72
3	B	402	FMN	C5A-C9A-N10	3.58	120.26	117.58
3	A	401	FMN	C4-N3-C2	4.91	119.25	115.16
3	B	402	FMN	C4-N3-C2	5.88	120.06	115.16

There are no chirality outliers.

There are no torsion outliers.

There are no ring outliers.

2 monomers are involved in 2 short contacts:

Mol	Chain	Res	Type	Clashes	Symm-Clashes
5	A	701	MPD	1	0
4	B	502	TUI	1	0

5.7 Other polymers

There are no such residues in this entry.

5.8 Polymer linkage issues

There are no chain breaks in this entry.

6 Fit of model and data ⓘ

6.1 Protein, DNA and RNA chains ⓘ

In the following table, the column labelled ‘#RSRZ> 2’ contains the number (and percentage) of RSRZ outliers, followed by percent RSRZ outliers for the chain as percentile scores relative to all X-ray entries and entries of similar resolution. The OWAB column contains the minimum, median, 95th percentile and maximum values of the occupancy-weighted average B-factor per residue. The column labelled ‘Q< 0.9’ lists the number of (and percentage) of residues with an average occupancy less than 0.9.

Mol	Chain	Analysed	<RSRZ>	#RSRZ>2	OWAB(Å ²)	Q<0.9
1	A	307/332 (92%)	0.49	12 (3%) 43 52	13, 22, 35, 50	0
1	B	307/332 (92%)	0.51	16 (5%) 31 39	13, 22, 36, 52	0
All	All	614/664 (92%)	0.50	28 (4%) 36 45	13, 22, 36, 52	0

All (28) RSRZ outliers are listed below:

Mol	Chain	Res	Type	RSRZ
1	B	258	PHE	5.6
1	B	321	VAL	5.2
1	B	246	ASP	3.9
1	A	258	PHE	3.9
1	B	243	ALA	3.8
1	B	212	LYS	3.6
1	B	222	ALA	3.6
1	B	260	GLN	3.4
1	B	263	ALA	3.1
1	A	320	VAL	2.9
1	A	246	ASP	2.8
1	B	223	GLN	2.8
1	B	247	ALA	2.6
1	B	1	MET	2.6
1	A	222	ALA	2.5
1	B	23	VAL	2.4
1	A	263	ALA	2.3
1	A	260	GLN	2.3
1	A	168	ALA	2.2
1	B	190	VAL	2.2
1	A	318	THR	2.2
1	A	188	VAL	2.1
1	B	242	LEU	2.1
1	B	24	ALA	2.1

Continued on next page...

Continued from previous page...

Mol	Chain	Res	Type	RSRZ
1	A	223	GLN	2.1
1	A	23	VAL	2.0
1	A	190	VAL	2.0
1	B	20	MET	2.0

6.2 Non-standard residues in protein, DNA, RNA chains [i](#)

There are no non-standard protein/DNA/RNA residues in this entry.

6.3 Carbohydrates [i](#)

There are no carbohydrates in this entry.

6.4 Ligands [i](#)

In the following table, the Atoms column lists the number of modelled atoms in the group and the number defined in the chemical component dictionary. LLDF column lists the quality of electron density of the group with respect to its neighbouring residues in protein, DNA or RNA chains. The B-factors column lists the minimum, median, 95th percentile and maximum values of B factors of atoms in the group. The column labelled 'Q< 0.9' lists the number of atoms with occupancy less than 0.9.

Mol	Type	Chain	Res	Atoms	RSCC	RSR	LLDF	B-factors(\AA^2)	Q<0.9
5	MPD	A	701	8/8	0.79	0.22	0.80	39,39,39,39	0
3	FMN	A	401	31/31	0.94	0.19	0.16	13,16,17,18	0
4	TUI	A	501	33/33	0.88	0.16	0.10	24,29,39,40	0
3	FMN	B	402	31/31	0.93	0.18	-0.00	14,18,19,20	0
4	TUI	B	502	33/33	0.90	0.14	-0.43	22,25,36,37	0
2	CA	A	603	1/1	0.96	0.11	-1.04	26,26,26,26	0
2	CA	A	602	1/1	0.97	0.12	-1.41	32,32,32,32	0
2	CA	B	601	1/1	0.96	0.08	-2.03	29,29,29,29	0
2	CA	B	604	1/1	0.89	0.11	-	35,35,35,35	0

6.5 Other polymers [i](#)

There are no such residues in this entry.