



# Full wwPDB X-ray Structure Validation Report ⓘ

Feb 19, 2016 – 09:04 PM GMT

PDB ID : 4Z6U  
Title : Structure of H200E variant of Homoprotocatechuate 2,3-Dioxygenase from B.fuscum in complex with 4-nitrocatechol at 1.48 Ang resolution  
Authors : Kovaleva, E.G.; Lipscomb, J.D.  
Deposited on : 2015-04-06  
Resolution : 1.48 Å(reported)

This is a Full wwPDB X-ray Structure Validation Report for a publicly released PDB entry.  
We welcome your comments at [validation@mail.wwpdb.org](mailto:validation@mail.wwpdb.org)  
A user guide is available at  
<http://wwpdb.org/validation/2016/XrayValidationReportHelp>  
with specific help available everywhere you see the ⓘ symbol.

---

The following versions of software and data (see [references ⓘ](#)) were used in the production of this report:

MolProbity : 4.02b-467  
Mogul : 1.7.1 (RC1), CSD as537be (2016)  
Xtriage (Phenix) : 1.9-1692  
EDS : rb-20026982  
Percentile statistics : 20151230.v01 (using entries in the PDB archive December 30th 2015)  
Refmac : 5.8.0135  
CCP4 : 6.5.0  
Ideal geometry (proteins) : Engh & Huber (2001)  
Ideal geometry (DNA, RNA) : Parkinson et al. (1996)  
Validation Pipeline (wwPDB-VP) : rb-20026982

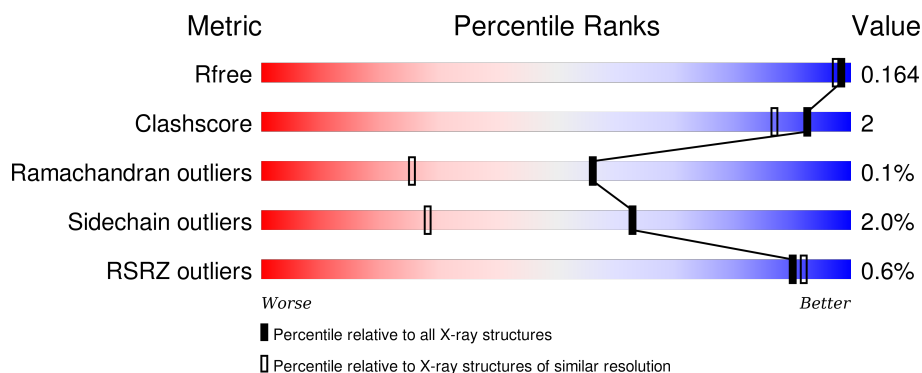
# 1 Overall quality at a glance ⓘ

The following experimental techniques were used to determine the structure:

## *X-RAY DIFFRACTION*

The reported resolution of this entry is 1.48 Å.

Percentile scores (ranging between 0-100) for global validation metrics of the entry are shown in the following graphic. The table shows the number of entries on which the scores are based.



Metric	Whole archive (#Entries)	Similar resolution (#Entries, resolution range(Å))
$R_{free}$	91344	3129 (1.50-1.46)
Clashscore	102246	3380 (1.50-1.46)
Ramachandran outliers	100387	3310 (1.50-1.46)
Sidechain outliers	100360	3308 (1.50-1.46)
RSRZ outliers	91569	3133 (1.50-1.46)

The table below summarises the geometric issues observed across the polymeric chains and their fit to the electron density. The red, orange, yellow and green segments on the lower bar indicate the fraction of residues that contain outliers for  $\geq 3$ , 2, 1 and 0 types of geometric quality criteria. A grey segment represents the fraction of residues that are not modelled. The numeric value for each fraction is indicated below the corresponding segment, with a dot representing fractions  $\leq 5\%$ . The upper red bar (where present) indicates the fraction of residues that have poor fit to the electron density. The numeric value is given above the bar.

Mol	Chain	Length	Quality of chain
1	A	365	<div> <div>%</div> <div> <div></div> <div>91%</div> <div>6% . .</div> </div> </div>
1	B	365	<div> <div></div> <div>88%</div> <div>10% .</div> </div>
1	C	365	<div> <div>%</div> <div> <div></div> <div>90%</div> <div>7% .</div> </div> </div>
1	D	365	<div> <div></div> <div>91%</div> <div>7% .</div> </div>

The following table lists non-polymeric compounds, carbohydrate monomers and non-standard

residues in protein, DNA, RNA chains that are outliers for geometric or electron-density-fit criteria:

Mol	Type	Chain	Res	Chirality	Geometry	Clashes	Electron density
3	P6G	B	404	-	-	-	X
6	4NC	C	403[A]	-	-	-	X

## 2 Entry composition

There are 7 unique types of molecules in this entry. The entry contains 13504 atoms, of which 0 are hydrogens and 0 are deuteriums.

In the tables below, the ZeroOcc column contains the number of atoms modelled with zero occupancy, the AltConf column contains the number of residues with at least one atom in alternate conformation and the Trace column contains the number of residues modelled with at most 2 atoms.

- Molecule 1 is a protein called Homoprotocatechuate 2,3-dioxygenase.

Mol	Chain	Residues	Atoms					ZeroOcc	AltConf	Trace
1	A	355	Total	C	N	O	S	0	8	0
			2935	1843	518	567	7			
1	B	359	Total	C	N	O	S	0	8	0
			2961	1862	521	571	7			
1	C	353	Total	C	N	O	S	0	8	0
			2918	1835	514	561	8			
1	D	358	Total	C	N	O	S	0	8	0
			2952	1858	519	567	8			

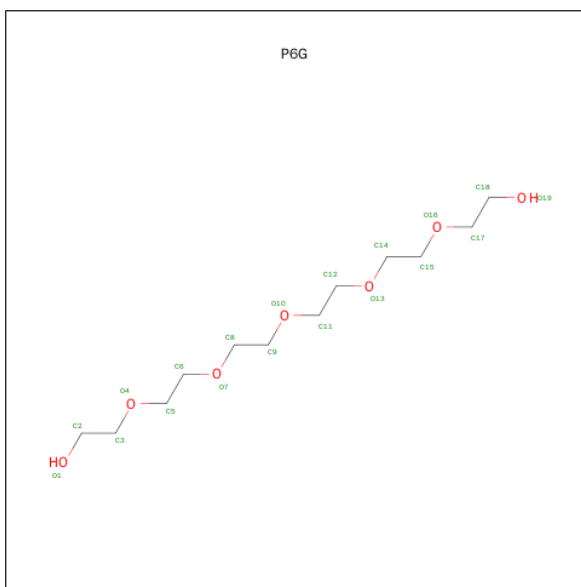
There are 4 discrepancies between the modelled and reference sequences:

Chain	Residue	Modelled	Actual	Comment	Reference
A	200	GLU	HIS	engineered mutation	UNP Q45135
B	200	GLU	HIS	engineered mutation	UNP Q45135
C	200	GLU	HIS	engineered mutation	UNP Q45135
D	200	GLU	HIS	engineered mutation	UNP Q45135

- Molecule 2 is FE (II) ION (three-letter code: FE2) (formula: Fe).

Mol	Chain	Residues	Atoms		ZeroOcc	AltConf
2	B	1	Total	Fe	0	0
			1	1		
2	A	1	Total	Fe	0	0
			1	1		
2	D	1	Total	Fe	0	0
			1	1		
2	C	1	Total	Fe	0	0
			1	1		

- Molecule 3 is HEXAETHYLENE GLYCOL (three-letter code: P6G) (formula: C<sub>12</sub>H<sub>26</sub>O<sub>7</sub>).



Mol	Chain	Residues	Atoms			ZeroOcc	AltConf
3	A	1	Total	C	O	0	0
			19	12	7		
3	B	1	Total	C	O	0	0
			19	12	7		
3	B	1	Total	C	O	0	0
			19	12	7		
3	C	1	Total	C	O	0	0
			19	12	7		
3	D	1	Total	C	O	0	0
			19	12	7		

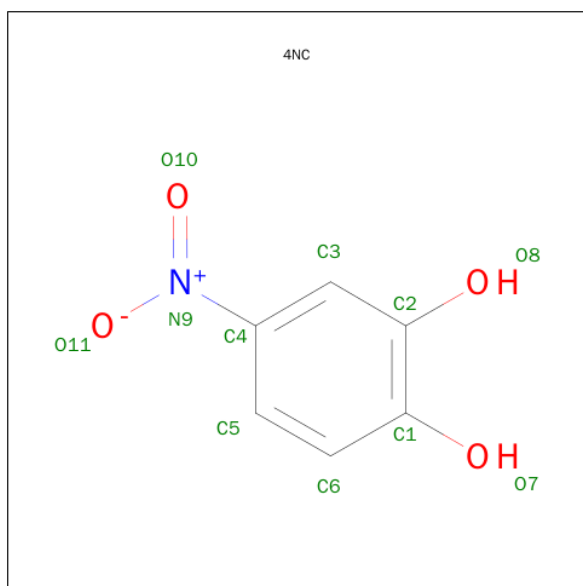
- Molecule 4 is CHLORIDE ION (three-letter code: CL) (formula: Cl).

Mol	Chain	Residues	Atoms		ZeroOcc	AltConf
4	B	1	Total	Cl	0	0
			1	1		
4	A	1	Total	Cl	0	0
			1	1		
4	D	1	Total	Cl	0	0
			1	1		
4	C	1	Total	Cl	0	1
			1	1		

- Molecule 5 is CALCIUM ION (three-letter code: CA) (formula: Ca).

Mol	Chain	Residues	Atoms		ZeroOcc	AltConf
5	B	1	Total	Ca	0	0
			1	1		

- Molecule 6 is 4-NITROCATÉCHOL (three-letter code: 4NC) (formula: C<sub>6</sub>H<sub>5</sub>NO<sub>4</sub>).



Mol	Chain	Residues	Atoms				ZeroOcc	AltConf
6	C	1	Total	C	N	O	0	1
			11	6	1	4		

- Molecule 7 is water.

Mol	Chain	Residues	Atoms		ZeroOcc	AltConf
7	A	400	Total	O	0	1
			400	400		
7	B	417	Total	O	0	1
			417	417		
7	C	386	Total	O	0	3
			387	387		
7	D	419	Total	O	0	3
			419	419		



## 4 Data and refinement statistics

Property	Value	Source
Space group	P 21 21 2	Depositor
Cell constants a, b, c, $\alpha$ , $\beta$ , $\gamma$	110.27Å 150.88Å 95.92Å 90.00° 90.00° 90.00°	Depositor
Resolution (Å)	45.70 – 1.48 45.71 – 1.48	Depositor EDS
% Data completeness (in resolution range)	99.0 (45.70-1.48) 99.0 (45.71-1.48)	Depositor EDS
$R_{merge}$	(Not available)	Depositor
$R_{sym}$	0.06	Depositor
$\langle I/\sigma(I) \rangle$ <sup>1</sup>	1.97 (at 1.48Å)	Xtriage
Refinement program	REFMAC	Depositor
R, $R_{free}$	0.117 , 0.162 0.119 , 0.164	Depositor DCC
$R_{free}$ test set	13081 reflections (5.24%)	DCC
Wilson B-factor (Å <sup>2</sup> )	16.2	Xtriage
Anisotropy	0.067	Xtriage
Bulk solvent $k_{sol}$ (e/Å <sup>3</sup> ), $B_{sol}$ (Å <sup>2</sup> )	0.34 , 45.1	EDS
Estimated twinning fraction	No twinning to report.	Xtriage
L-test for twinning <sup>2</sup>	$\langle  L  \rangle = 0.48$ , $\langle L^2 \rangle = 0.31$	Xtriage
Outliers	0 of 262575 reflections	Xtriage
$F_o, F_c$ correlation	0.98	EDS
Total number of atoms	13504	wwPDB-VP
Average B, all atoms (Å <sup>2</sup> )	21.0	wwPDB-VP

Xtriage's analysis on translational NCS is as follows: *The largest off-origin peak in the Patterson function is 3.37% of the height of the origin peak. No significant pseudotranslation is detected.*

<sup>1</sup>Intensities estimated from amplitudes.

<sup>2</sup>Theoretical values of  $\langle |L| \rangle$ ,  $\langle L^2 \rangle$  for acentric reflections are 0.5, 0.375 respectively for untwinned datasets, and 0.333, 0.2 for perfectly twinned datasets.



## 5 Model quality

### 5.1 Standard geometry

Bond lengths and bond angles in the following residue types are not validated in this section: CA, FE2, 4NC, P6G, CL

The Z score for a bond length (or angle) is the number of standard deviations the observed value is removed from the expected value. A bond length (or angle) with  $|Z| > 5$  is considered an outlier worth inspection. RMSZ is the root-mean-square of all Z scores of the bond lengths (or angles).

Mol	Chain	Bond lengths		Bond angles	
		RMSZ	$\# Z  > 5$	RMSZ	$\# Z  > 5$
1	A	0.66	0/3009	0.81	2/4086 (0.0%)
1	B	0.65	0/3036	0.81	2/4121 (0.0%)
1	C	0.62	0/2992	0.82	6/4065 (0.1%)
1	D	0.60	0/3027	0.79	4/4108 (0.1%)
All	All	0.63	0/12064	0.80	14/16380 (0.1%)

There are no bond length outliers.

All (14) bond angle outliers are listed below:

Mol	Chain	Res	Type	Atoms	Z	Observed(°)	Ideal(°)
1	D	243	ARG	NE-CZ-NH2	-6.36	117.12	120.30
1	B	100	ARG	NE-CZ-NH2	-6.13	117.24	120.30
1	C	117	ARG	NE-CZ-NH2	-5.94	117.33	120.30
1	D	265	ARG	NE-CZ-NH1	5.93	123.27	120.30
1	C	165	ARG	NE-CZ-NH1	5.93	123.27	120.30
1	A	120	ASP	CB-CG-OD1	5.92	123.63	118.30
1	A	120	ASP	CB-CG-OD2	-5.81	113.07	118.30
1	D	243	ARG	NE-CZ-NH1	5.40	123.00	120.30
1	B	120	ASP	CB-CG-OD1	5.39	123.15	118.30
1	C	167	ARG	NE-CZ-NH2	-5.35	117.62	120.30
1	D	176	ARG	NE-CZ-NH2	5.24	122.92	120.30
1	C	103	ARG	NE-CZ-NH1	5.21	122.90	120.30
1	C	265	ARG	NE-CZ-NH1	5.09	122.85	120.30
1	C	269	TYR	CA-CB-CG	5.03	122.95	113.40

There are no chirality outliers.

There are no planarity outliers.

## 5.2 Too-close contacts ⓘ

In the following table, the Non-H and H(model) columns list the number of non-hydrogen atoms and hydrogen atoms in the chain respectively. The H(added) column lists the number of hydrogen atoms added and optimized by MolProbity. The Clashes column lists the number of clashes within the asymmetric unit, whereas Symm-Clashes lists symmetry related clashes.

Mol	Chain	Non-H	H(model)	H(added)	Clashes	Symm-Clashes
1	A	2935	0	2771	11	0
1	B	2961	0	2799	18	0
1	C	2918	0	2763	12	0
1	D	2952	0	2796	12	0
2	A	1	0	0	0	0
2	B	1	0	0	0	0
2	C	1	0	0	0	0
2	D	1	0	0	0	0
3	A	19	0	26	0	0
3	B	38	0	52	0	0
3	C	19	0	26	0	0
3	D	19	0	26	0	0
4	A	1	0	0	0	0
4	B	1	0	0	0	0
4	C	1	0	0	0	0
4	D	1	0	0	0	0
5	B	1	0	0	0	0
6	C	11	0	3	0	0
7	A	400	0	0	0	0
7	B	417	0	0	1	0
7	C	387	0	0	0	0
7	D	419	0	0	0	0
All	All	13504	0	11262	47	0

The all-atom clashscore is defined as the number of clashes found per 1000 atoms (including hydrogen atoms). The all-atom clashscore for this structure is 2.

All (47) close contacts within the same asymmetric unit are listed below, sorted by their clash magnitude.

Atom-1	Atom-2	Interatomic distance (Å)	Clash overlap (Å)
1:A:8:PRO:HG3	1:A:97:LEU:HD13	1.76	0.68
1:B:302:PRO:HG3	1:B:361:LEU:HD23	1.85	0.59
1:C:218[A]:SER:HA	1:C:269:TYR:O	2.05	0.56
1:A:218:SER:HA	1:A:269:TYR:O	2.07	0.55
1:D:218[B]:SER:HA	1:D:269:TYR:O	2.08	0.53

*Continued on next page...*

*Continued from previous page...*

Atom-1	Atom-2	Interatomic distance (Å)	Clash overlap (Å)
1:C:48:GLU:CD	1:C:48:GLU:H	2.11	0.53
1:C:330:LEU:C	1:C:330:LEU:HD23	2.29	0.53
1:C:218[B]:SER:HA	1:C:269:TYR:O	2.08	0.53
1:A:248:HIS:HB3	1:A:250:VAL:O	2.10	0.51
1:D:302:PRO:HG3	1:D:361:LEU:HD22	1.93	0.50
1:D:119:GLU:HG3	1:D:314:LEU:HG	1.94	0.50
1:D:218[A]:SER:HA	1:D:269:TYR:O	2.12	0.49
1:B:151:VAL:HG11	1:B:220:HIS:CE1	2.47	0.49
1:C:248:HIS:HB3	1:C:250:VAL:O	2.13	0.48
1:B:91:GLU:HG2	1:B:95:GLN:NE2	2.29	0.48
1:B:142:TYR:CG	1:C:230:ASP:HB3	2.50	0.47
1:D:74:LEU:HD21	1:D:77[B]:MET:HG3	1.96	0.47
1:B:218:SER:HA	1:B:269:TYR:O	2.15	0.47
1:C:151:VAL:HG23	1:C:152[A]:ARG:HG3	1.97	0.47
1:A:142:TYR:CG	1:D:230:ASP:HB3	2.50	0.47
1:C:119:GLU:HG3	1:C:314:LEU:HG	1.98	0.46
1:A:230:ASP:HB3	1:D:142:TYR:CG	2.50	0.46
1:A:246:GLY:HA2	1:A:296:TRP:CZ3	2.51	0.46
1:D:330:LEU:C	1:D:330:LEU:HD23	2.37	0.46
1:A:119:GLU:HG3	1:A:314:LEU:HG	1.99	0.44
1:D:248:HIS:HB3	1:D:250:VAL:O	2.17	0.44
1:B:299:PRO:HD3	1:B:357:LYS:HG3	2.00	0.44
1:B:301:VAL:HG12	1:D:359:PHE:CE2	2.52	0.44
1:B:176:ARG:HD3	7:B:640:HOH:O	2.17	0.44
1:B:230:ASP:HB3	1:C:142:TYR:CG	2.53	0.44
1:B:248:HIS:HB3	1:B:250:VAL:O	2.17	0.44
1:B:246:GLY:HA2	1:B:296:TRP:CZ3	2.53	0.43
1:B:192:TRP:CE2	1:B:250:VAL:HG11	2.54	0.43
1:A:330:LEU:C	1:A:330:LEU:HD23	2.39	0.43
1:B:119:GLU:HG3	1:B:314:LEU:HG	2.00	0.43
1:B:347:GLU:OE2	1:B:352:HIS:NE2	2.48	0.42
1:A:46[B]:GLU:HG3	1:A:51:ILE:HG12	2.00	0.42
1:C:101:THR:HG22	1:C:118:VAL:HG12	2.02	0.42
1:C:32:ARG:HB2	1:C:51:ILE:CD1	2.50	0.41
1:D:105:LYS:HD2	1:D:105:LYS:HA	1.84	0.41
1:B:330:LEU:C	1:B:330:LEU:HD23	2.39	0.41
1:B:151:VAL:HG23	1:B:152[B]:ARG:HG3	2.02	0.41
1:A:357:LYS:O	1:C:301[B]:VAL:HG11	2.21	0.41
1:A:151:VAL:HG23	1:A:152[B]:ARG:HG3	2.01	0.40
1:B:50:GLN:HA	1:B:66:LEU:O	2.21	0.40
1:B:192:TRP:CD2	1:B:250:VAL:HG11	2.56	0.40

*Continued on next page...*

*Continued from previous page...*

Atom-1	Atom-2	Interatomic distance (Å)	Clash overlap (Å)
1:D:246:GLY:HA2	1:D:296:TRP:CZ3	2.56	0.40

There are no symmetry-related clashes.

## 5.3 Torsion angles [i](#)

### 5.3.1 Protein backbone [i](#)

In the following table, the Percentiles column shows the percent Ramachandran outliers of the chain as a percentile score with respect to all X-ray entries followed by that with respect to entries of similar resolution.

The Analysed column shows the number of residues for which the backbone conformation was analysed, and the total number of residues.

Mol	Chain	Analysed	Favoured	Allowed	Outliers	Percentiles	
1	A	361/365 (99%)	351 (97%)	10 (3%)	0	100	100
1	B	365/365 (100%)	355 (97%)	9 (2%)	1 (0%)	46	18
1	C	359/365 (98%)	349 (97%)	10 (3%)	0	100	100
1	D	364/365 (100%)	355 (98%)	9 (2%)	0	100	100
All	All	1449/1460 (99%)	1410 (97%)	38 (3%)	1 (0%)	56	25

All (1) Ramachandran outliers are listed below:

Mol	Chain	Res	Type
1	B	251	SER

### 5.3.2 Protein sidechains [i](#)

In the following table, the Percentiles column shows the percent sidechain outliers of the chain as a percentile score with respect to all X-ray entries followed by that with respect to entries of similar resolution.

The Analysed column shows the number of residues for which the sidechain conformation was analysed, and the total number of residues.

Mol	Chain	Analysed	Rotameric	Outliers	Percentiles	
1	A	312/313 (100%)	305 (98%)	7 (2%)	60	24

*Continued on next page...*

*Continued from previous page...*

Mol	Chain	Analysed	Rotameric	Outliers	Percentiles	
1	B	315/313 (101%)	308 (98%)	7 (2%)	60	24
1	C	311/313 (99%)	307 (99%)	4 (1%)	76	48
1	D	314/313 (100%)	308 (98%)	6 (2%)	65	30
All	All	1252/1252 (100%)	1228 (98%)	24 (2%)	63	30

All (24) residues with a non-rotameric sidechain are listed below:

Mol	Chain	Res	Type
1	A	4	GLU
1	A	85	GLU
1	A	97	LEU
1	A	120	ASP
1	A	176	ARG
1	A	193	MET
1	A	260	ASP
1	B	105	LYS
1	B	120	ASP
1	B	168	LYS
1	B	169	TYR
1	B	193	MET
1	B	260	ASP
1	B	320	GLU
1	C	4	GLU
1	C	120	ASP
1	C	193	MET
1	C	260	ASP
1	D	105	LYS
1	D	120	ASP
1	D	168	LYS
1	D	169	TYR
1	D	193	MET
1	D	260	ASP

Some sidechains can be flipped to improve hydrogen bonding and reduce clashes. There are no such sidechains identified.

### 5.3.3 RNA ⓘ

There are no RNA molecules in this entry.

## 5.4 Non-standard residues in protein, DNA, RNA chains ⓘ

There are no non-standard protein/DNA/RNA residues in this entry.

## 5.5 Carbohydrates ⓘ

There are no carbohydrates in this entry.

## 5.6 Ligand geometry ⓘ

Of 15 ligands modelled in this entry, 9 are monoatomic - leaving 6 for Mogul analysis.

In the following table, the Counts columns list the number of bonds (or angles) for which Mogul statistics could be retrieved, the number of bonds (or angles) that are observed in the model and the number of bonds (or angles) that are defined in the chemical component dictionary. The Link column lists molecule types, if any, to which the group is linked. The Z score for a bond length (or angle) is the number of standard deviations the observed value is removed from the expected value. A bond length (or angle) with  $|Z| > 2$  is considered an outlier worth inspection. RMSZ is the root-mean-square of all Z scores of the bond lengths (or angles).

Mol	Type	Chain	Res	Link	Bond lengths			Bond angles		
					Counts	RMSZ	$\# Z  > 2$	Counts	RMSZ	$\# Z  > 2$
3	P6G	A	402	-	18,18,18	0.52	0	17,17,17	0.64	0
3	P6G	B	403	-	18,18,18	0.44	0	17,17,17	0.46	0
3	P6G	B	404	-	18,18,18	0.61	0	17,17,17	0.47	0
3	P6G	C	402	-	18,18,18	0.45	0	17,17,17	0.66	0
6	4NC	C	403[A]	2	9,11,11	3.21	2 (22%)	12,15,15	1.54	3 (25%)
3	P6G	D	402	-	18,18,18	0.59	0	17,17,17	0.31	0

In the following table, the Chirals column lists the number of chiral outliers, the number of chiral centers analysed, the number of these observed in the model and the number defined in the chemical component dictionary. Similar counts are reported in the Torsion and Rings columns. '-' means no outliers of that kind were identified.

Mol	Type	Chain	Res	Link	Chirals	Torsions	Rings
3	P6G	A	402	-	-	0/16/16/16	0/0/0/0
3	P6G	B	403	-	-	0/16/16/16	0/0/0/0
3	P6G	B	404	-	-	0/16/16/16	0/0/0/0
3	P6G	C	402	-	-	0/16/16/16	0/0/0/0
6	4NC	C	403[A]	2	-	0/4/4/4	0/1/1/1
3	P6G	D	402	-	-	0/16/16/16	0/0/0/0

All (2) bond length outliers are listed below:

Mol	Chain	Res	Type	Atoms	Z	Observed(Å)	Ideal(Å)
6	C	403[A]	4NC	C2-C1	5.94	1.50	1.40
6	C	403[A]	4NC	O10-N9	6.97	1.36	1.22

All (3) bond angle outliers are listed below:

Mol	Chain	Res	Type	Atoms	Z	Observed(°)	Ideal(°)
6	C	403[A]	4NC	C3-C4-N9	-2.10	116.89	118.74
6	C	403[A]	4NC	C5-C4-N9	2.09	121.01	119.51
6	C	403[A]	4NC	O7-C1-C6	2.47	126.09	119.36

There are no chirality outliers.

There are no torsion outliers.

There are no ring outliers.

No monomer is involved in short contacts.

## 5.7 Other polymers [i](#)

There are no such residues in this entry.

## 5.8 Polymer linkage issues [i](#)

There are no chain breaks in this entry.

## 6 Fit of model and data [i](#)

### 6.1 Protein, DNA and RNA chains [i](#)

In the following table, the column labelled ‘#RSRZ> 2’ contains the number (and percentage) of RSRZ outliers, followed by percent RSRZ outliers for the chain as percentile scores relative to all X-ray entries and entries of similar resolution. The OWAB column contains the minimum, median, 95<sup>th</sup> percentile and maximum values of the occupancy-weighted average B-factor per residue. The column labelled ‘Q< 0.9’ lists the number of (and percentage) of residues with an average occupancy less than 0.9.

Mol	Chain	Analysed	<RSRZ>	#RSRZ>2	OWAB(Å <sup>2</sup> )	Q<0.9
1	A	355/365 (97%)	-0.24	5 (1%) 78 80	12, 20, 34, 50	0
1	B	359/365 (98%)	-0.34	0 100 100	11, 18, 30, 45	0
1	C	353/365 (96%)	-0.26	3 (0%) 87 89	10, 17, 32, 53	0
1	D	358/365 (98%)	-0.30	0 100 100	11, 18, 31, 42	0
All	All	1425/1460 (97%)	-0.29	8 (0%) 90 92	10, 18, 32, 53	0

All (8) RSRZ outliers are listed below:

Mol	Chain	Res	Type	RSRZ
1	C	355	ALA	4.9
1	A	9	VAL	3.3
1	C	353	GLY	2.6
1	A	85	GLU	2.6
1	A	11	PRO	2.4
1	A	355	ALA	2.3
1	C	335	GLY	2.1
1	A	337	ASP	2.0

### 6.2 Non-standard residues in protein, DNA, RNA chains [i](#)

There are no non-standard protein/DNA/RNA residues in this entry.

### 6.3 Carbohydrates [i](#)

There are no carbohydrates in this entry.



## 6.4 Ligands ⓘ

In the following table, the Atoms column lists the number of modelled atoms in the group and the number defined in the chemical component dictionary. LLDF column lists the quality of electron density of the group with respect to its neighbouring residues in protein, DNA or RNA chains. The B-factors column lists the minimum, median, 95<sup>th</sup> percentile and maximum values of B factors of atoms in the group. The column labelled 'Q< 0.9' lists the number of atoms with occupancy less than 0.9.

Mol	Type	Chain	Res	Atoms	RSCC	RSR	LLDF	B-factors(Å <sup>2</sup> )	Q<0.9
6	4NC	C	403[A]	11/11	0.96	0.12	5.15	16,18,26,33	11
3	P6G	B	404	19/19	0.95	0.07	2.18	29,34,38,41	0
3	P6G	D	402	19/19	0.97	0.10	0.61	19,25,45,57	0
3	P6G	B	403	19/19	0.98	0.09	0.56	18,25,41,49	0
3	P6G	C	402	19/19	0.97	0.08	0.52	16,22,38,49	0
3	P6G	A	402	19/19	0.96	0.09	-0.03	25,30,56,58	0
5	CA	B	402	1/1	1.00	0.04	-1.60	15,15,15,15	0
2	FE2	C	401	1/1	1.00	0.04	-2.92	18,18,18,18	1
2	FE2	D	401	1/1	1.00	0.04	-3.41	18,18,18,18	1
2	FE2	B	401	1/1	1.00	0.03	-3.58	19,19,19,19	1
2	FE2	A	401	1/1	1.00	0.04	-6.53	21,21,21,21	1
4	CL	C	404[B]	1/1	1.00	0.13	-	11,11,11,11	1
4	CL	B	405	1/1	1.00	0.06	-	18,18,18,18	0
4	CL	A	403	1/1	1.00	0.04	-	22,22,22,22	0
4	CL	D	403	1/1	1.00	0.04	-	19,19,19,19	0

## 6.5 Other polymers ⓘ

There are no such residues in this entry.