



Full wwPDB X-ray Structure Validation Report ⓘ

Feb 19, 2016 – 08:58 PM GMT

PDB ID : 4Z6W
Title : Structure of H200N variant of Homoprotocatechuate 2,3-Dioxygenase from B.fuscum in complex with 4-nitrocatechol at 1.57 Ang resolution
Authors : Kovaleva, E.G.; Lipscomb, J.D.
Deposited on : 2015-04-06
Resolution : 1.57 Å(reported)

This is a Full wwPDB X-ray Structure Validation Report for a publicly released PDB entry.
We welcome your comments at validation@mail.wwpdb.org
A user guide is available at
<http://wwpdb.org/validation/2016/XrayValidationReportHelp>
with specific help available everywhere you see the ⓘ symbol.

The following versions of software and data (see [references ⓘ](#)) were used in the production of this report:

MolProbity : 4.02b-467
Mogul : 1.7.1 (RC1), CSD as537be (2016)
Xtriage (Phenix) : 1.9-1692
EDS : rb-20026982
Percentile statistics : 20151230.v01 (using entries in the PDB archive December 30th 2015)
Refmac : 5.8.0135
CCP4 : 6.5.0
Ideal geometry (proteins) : Engh & Huber (2001)
Ideal geometry (DNA, RNA) : Parkinson et al. (1996)
Validation Pipeline (wwPDB-VP) : rb-20026982

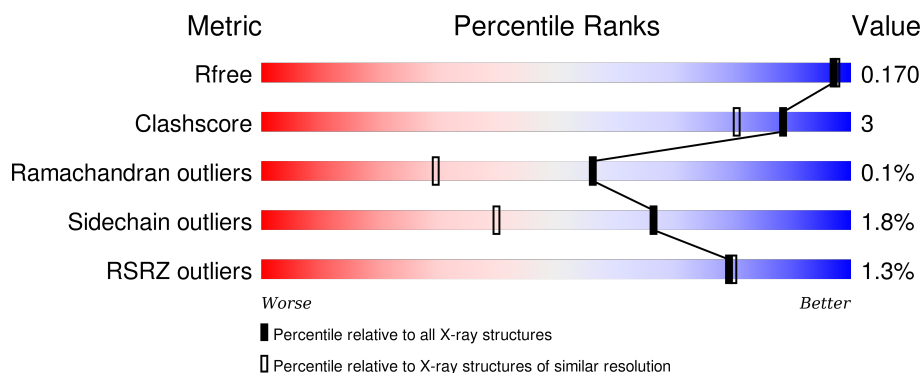
1 Overall quality at a glance ⓘ

The following experimental techniques were used to determine the structure:

X-RAY DIFFRACTION

The reported resolution of this entry is 1.57 Å.

Percentile scores (ranging between 0-100) for global validation metrics of the entry are shown in the following graphic. The table shows the number of entries on which the scores are based.



Metric	Whole archive (#Entries)	Similar resolution (#Entries, resolution range(Å))
R_{free}	91344	3815 (1.60-1.56)
Clashscore	102246	4131 (1.60-1.56)
Ramachandran outliers	100387	4021 (1.60-1.56)
Sidechain outliers	100360	4018 (1.60-1.56)
RSRZ outliers	91569	3823 (1.60-1.56)

The table below summarises the geometric issues observed across the polymeric chains and their fit to the electron density. The red, orange, yellow and green segments on the lower bar indicate the fraction of residues that contain outliers for ≥ 3 , 2, 1 and 0 types of geometric quality criteria. A grey segment represents the fraction of residues that are not modelled. The numeric value for each fraction is indicated below the corresponding segment, with a dot representing fractions $\leq 5\%$. The upper red bar (where present) indicates the fraction of residues that have poor fit to the electron density. The numeric value is given above the bar.

Mol	Chain	Length	Quality of chain
1	A	365	<div> <div>%</div> <div> <div></div> <div>90%</div> <div>5% . .</div> </div> </div>
1	B	365	<div> <div></div> <div>88%</div> <div>10% . .</div> </div>
1	C	365	<div> <div>2%</div> <div> <div></div> <div>90%</div> <div>6% . .</div> </div> </div>
1	D	365	<div> <div>%</div> <div> <div></div> <div>91%</div> <div>7% . .</div> </div> </div>

The following table lists non-polymeric compounds, carbohydrate monomers and non-standard

residues in protein, DNA, RNA chains that are outliers for geometric or electron-density-fit criteria:

Mol	Type	Chain	Res	Chirality	Geometry	Clashes	Electron density
3	P6G	B	404	-	-	-	X
4	4NC	A	403[B]	-	-	-	X
4	4NC	B	406[B]	-	-	-	X
4	4NC	C	403	-	-	-	X
4	4NC	D	404[B]	-	-	-	X
7	PEG	B	405	-	-	-	X

2 Entry composition

There are 8 unique types of molecules in this entry. The entry contains 13778 atoms, of which 0 are hydrogens and 0 are deuteriums.

In the tables below, the ZeroOcc column contains the number of atoms modelled with zero occupancy, the AltConf column contains the number of residues with at least one atom in alternate conformation and the Trace column contains the number of residues modelled with at most 2 atoms.

- Molecule 1 is a protein called Homoprotocatechuate 2,3-dioxygenase.

Mol	Chain	Residues	Atoms					ZeroOcc	AltConf	Trace
1	A	355	Total	C	N	O	S	0	12	0
			2964	1858	525	574	7			
1	B	359	Total	C	N	O	S	0	14	0
			3006	1886	530	582	8			
1	C	353	Total	C	N	O	S	0	12	0
			2949	1851	521	569	8			
1	D	359	Total	C	N	O	S	0	10	0
			2977	1871	527	571	8			

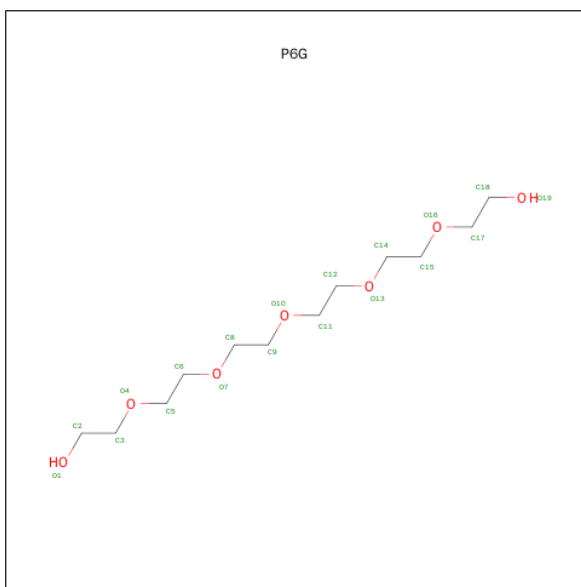
There are 4 discrepancies between the modelled and reference sequences:

Chain	Residue	Modelled	Actual	Comment	Reference
A	200	ASN	HIS	engineered mutation	UNP Q45135
B	200	ASN	HIS	engineered mutation	UNP Q45135
C	200	ASN	HIS	engineered mutation	UNP Q45135
D	200	ASN	HIS	engineered mutation	UNP Q45135

- Molecule 2 is FE (II) ION (three-letter code: FE2) (formula: Fe).

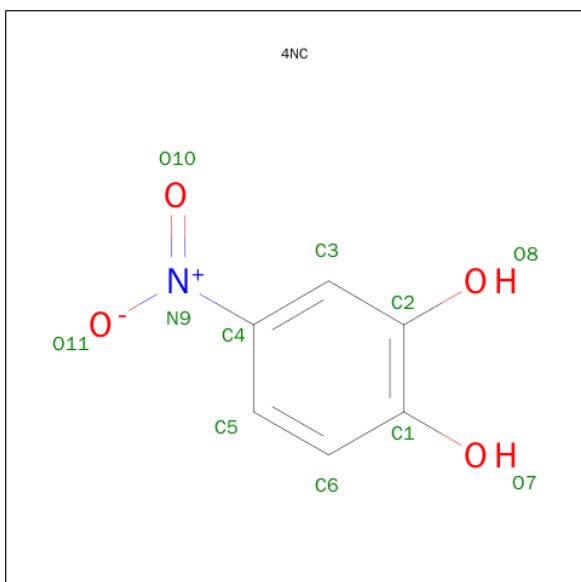
Mol	Chain	Residues	Atoms		ZeroOcc	AltConf
2	B	1	Total	Fe	0	0
			1	1		
2	A	1	Total	Fe	0	0
			1	1		
2	D	1	Total	Fe	0	0
			1	1		
2	C	1	Total	Fe	0	0
			1	1		

- Molecule 3 is HEXAETHYLENE GLYCOL (three-letter code: P6G) (formula: C₁₂H₂₆O₇).



Mol	Chain	Residues	Atoms			ZeroOcc	AltConf
3	A	1	Total	C	O	0	0
			19	12	7		
3	B	1	Total	C	O	0	0
			19	12	7		
3	B	1	Total	C	O	0	0
			19	12	7		
3	C	1	Total	C	O	0	0
			19	12	7		
3	D	1	Total	C	O	0	0
			19	12	7		

- Molecule 4 is 4-NITROCATÉCHOL (three-letter code: 4NC) (formula: $C_6H_5NO_4$).



Mol	Chain	Residues	Atoms	ZeroOcc	AltConf
4	A	1	Total C N O 11 6 1 4	0	1
4	B	1	Total C N O 11 6 1 4	0	1
4	C	1	Total C N O 11 6 1 4	0	0
4	D	1	Total C N O 11 6 1 4	0	1

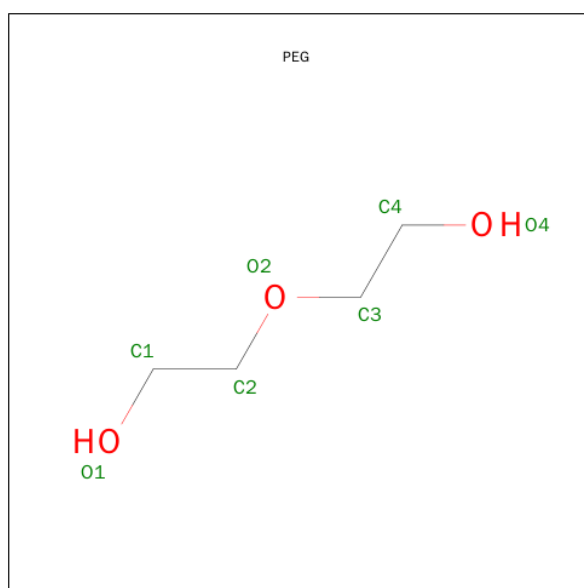
- Molecule 5 is CHLORIDE ION (three-letter code: CL) (formula: Cl).

Mol	Chain	Residues	Atoms	ZeroOcc	AltConf
5	B	1	Total Cl 1 1	0	1
5	A	1	Total Cl 1 1	0	1
5	D	1	Total Cl 1 1	0	1

- Molecule 6 is CALCIUM ION (three-letter code: CA) (formula: Ca).

Mol	Chain	Residues	Atoms	ZeroOcc	AltConf
6	B	1	Total Ca 1 1	0	0

- Molecule 7 is DI(HYDROXYETHYL)ETHER (three-letter code: PEG) (formula: C₄H₁₀O₃).



Mol	Chain	Residues	Atoms			ZeroOcc	AltConf
7	B	1	Total	C	O	0	0
			7	4	3		
7	D	1	Total	C	O	0	0
			7	4	3		

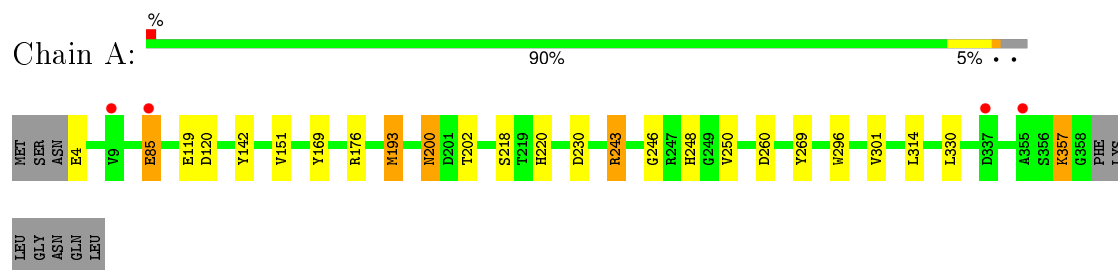
- Molecule 8 is water.

Mol	Chain	Residues	Atoms		ZeroOcc	AltConf
8	A	423	Total	O	0	1
			423	423		
8	B	447	Total	O	0	2
			448	448		
8	C	414	Total	O	0	4
			417	417		
8	D	428	Total	O	0	6
			433	433		

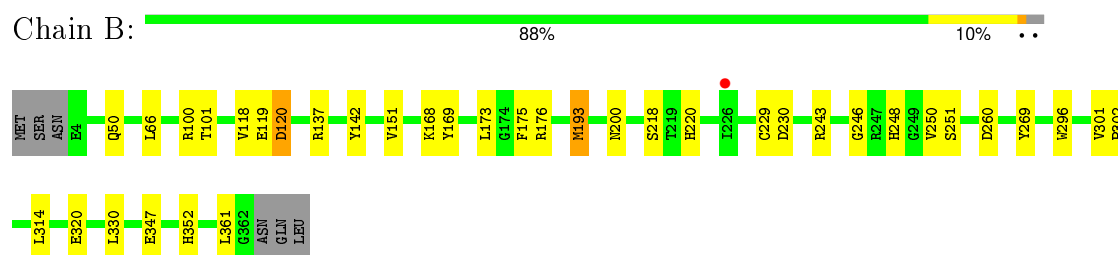
3 Residue-property plots [i](#)

These plots are drawn for all protein, RNA and DNA chains in the entry. The first graphic for a chain summarises the proportions of errors displayed in the second graphic. The second graphic shows the sequence view annotated by issues in geometry and electron density. Residues are color-coded according to the number of geometric quality criteria for which they contain at least one outlier: green = 0, yellow = 1, orange = 2 and red = 3 or more. A red dot above a residue indicates a poor fit to the electron density ($RSRZ > 2$). Stretches of 2 or more consecutive residues without any outlier are shown as a green connector. Residues present in the sample, but not in the model, are shown in grey.

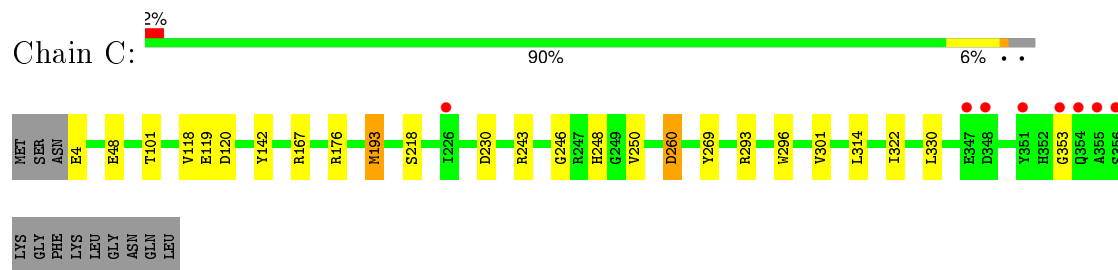
- Molecule 1: Homoprotocatechuate 2,3-dioxygenase



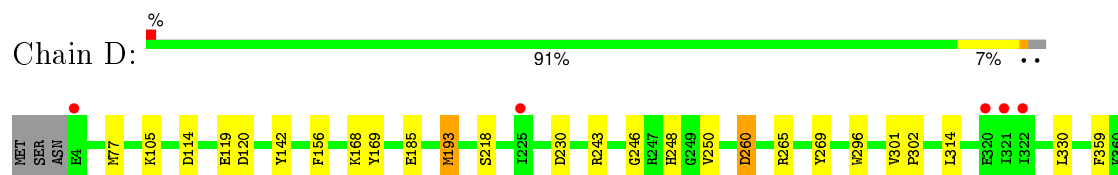
- Molecule 1: Homoprotocatechuate 2,3-dioxygenase



- Molecule 1: Homoprotocatechuate 2,3-dioxygenase



- Molecule 1: Homoprotocatechuate 2,3-dioxygenase



L361	G362
ASN	GLN
LEU	

4 Data and refinement statistics

Property	Value	Source
Space group	P 21 21 2	Depositor
Cell constants a, b, c, α , β , γ	110.47Å 150.65Å 96.00Å 90.00° 90.00° 90.00°	Depositor
Resolution (Å)	45.73 – 1.57 45.73 – 1.57	Depositor EDS
% Data completeness (in resolution range)	97.9 (45.73-1.57) 97.9 (45.73-1.57)	Depositor EDS
R_{merge}	(Not available)	Depositor
R_{sym}	0.09	Depositor
$\langle I/\sigma(I) \rangle$ ¹	2.03 (at 1.57Å)	Xtriage
Refinement program	REFMAC	Depositor
R, R_{free}	0.137 , 0.163 0.148 , 0.170	Depositor DCC
R_{free} test set	10854 reflections (5.24%)	DCC
Wilson B-factor (Å ²)	17.1	Xtriage
Anisotropy	0.242	Xtriage
Bulk solvent k_{sol} (e/Å ³), B_{sol} (Å ²)	0.34 , 48.7	EDS
Estimated twinning fraction	No twinning to report.	Xtriage
L-test for twinning ²	$\langle L \rangle = 0.48$, $\langle L^2 \rangle = 0.31$	Xtriage
Outliers	0 of 218171 reflections	Xtriage
F_o, F_c correlation	0.97	EDS
Total number of atoms	13778	wwPDB-VP
Average B, all atoms (Å ²)	21.0	wwPDB-VP

Xtriage's analysis on translational NCS is as follows: *The largest off-origin peak in the Patterson function is 3.03% of the height of the origin peak. No significant pseudotranslation is detected.*

¹Intensities estimated from amplitudes.

²Theoretical values of $\langle |L| \rangle$, $\langle L^2 \rangle$ for acentric reflections are 0.5, 0.375 respectively for untwinned datasets, and 0.333, 0.2 for perfectly twinned datasets.

5 Model quality

5.1 Standard geometry

Bond lengths and bond angles in the following residue types are not validated in this section: 4NC, CL, CA, FE2, P6G, PEG

The Z score for a bond length (or angle) is the number of standard deviations the observed value is removed from the expected value. A bond length (or angle) with $|Z| > 5$ is considered an outlier worth inspection. RMSZ is the root-mean-square of all Z scores of the bond lengths (or angles).

Mol	Chain	Bond lengths		Bond angles	
		RMSZ	$\# Z > 5$	RMSZ	$\# Z > 5$
1	A	0.63	0/3038	0.80	1/4126 (0.0%)
1	B	0.68	0/3081	0.84	5/4182 (0.1%)
1	C	0.66	0/3023	0.84	5/4108 (0.1%)
1	D	0.63	0/3052	0.83	3/4142 (0.1%)
All	All	0.65	0/12194	0.83	14/16558 (0.1%)

Chiral center outliers are detected by calculating the chiral volume of a chiral center and verifying if the center is modelled as a planar moiety or with the opposite hand. A planarity outlier is detected by checking planarity of atoms in a peptide group, atoms in a mainchain group or atoms of a sidechain that are expected to be planar.

Mol	Chain	#Chirality outliers	#Planarity outliers
1	A	0	2
1	B	0	1
1	C	0	1
All	All	0	4

There are no bond length outliers.

All (14) bond angle outliers are listed below:

Mol	Chain	Res	Type	Atoms	Z	Observed(°)	Ideal(°)
1	C	193	MET	CG-SD-CE	-7.48	88.24	100.20
1	D	193	MET	CG-SD-CE	-7.05	88.91	100.20
1	D	265	ARG	NE-CZ-NH1	6.15	123.37	120.30
1	B	100	ARG	NE-CZ-NH2	-6.00	117.30	120.30
1	C	167	ARG	NE-CZ-NH2	-5.95	117.32	120.30
1	B	120	ASP	CB-CG-OD1	5.88	123.59	118.30
1	D	260	ASP	CB-CG-OD1	5.46	123.21	118.30
1	B	176	ARG	NE-CZ-NH1	5.44	123.02	120.30
1	C	293	ARG	NE-CZ-NH1	5.42	123.01	120.30

Continued on next page...

Continued from previous page...

Mol	Chain	Res	Type	Atoms	Z	Observed(°)	Ideal(°)
1	B	137	ARG	NE-CZ-NH2	-5.32	117.64	120.30
1	C	243	ARG	NE-CZ-NH1	5.31	122.96	120.30
1	C	260	ASP	CB-CG-OD2	-5.07	113.73	118.30
1	A	243	ARG	NE-CZ-NH1	5.07	122.83	120.30
1	B	243	ARG	NE-CZ-NH2	-5.02	117.79	120.30

There are no chirality outliers.

All (4) planarity outliers are listed below:

Mol	Chain	Res	Type	Group
1	A	200[B]	ASN	Peptide
1	A	357	LYS	Peptide
1	B	200[B]	ASN	Peptide
1	C	353	GLY	Peptide

5.2 Too-close contacts

In the following table, the Non-H and H(model) columns list the number of non-hydrogen atoms and hydrogen atoms in the chain respectively. The H(added) column lists the number of hydrogen atoms added and optimized by MolProbity. The Clashes column lists the number of clashes within the asymmetric unit, whereas Symm-Clashes lists symmetry related clashes.

Mol	Chain	Non-H	H(model)	H(added)	Clashes	Symm-Clashes
1	A	2964	0	2793	15	0
1	B	3006	0	2832	19	0
1	C	2949	0	2784	14	0
1	D	2977	0	2820	18	0
2	A	1	0	0	0	0
2	B	1	0	0	0	0
2	C	1	0	0	0	0
2	D	1	0	0	0	0
3	A	19	0	26	0	0
3	B	38	0	52	0	0
3	C	19	0	26	0	0
3	D	19	0	26	0	0
4	A	11	0	3	0	0
4	B	11	0	3	0	0
4	C	11	0	3	0	0
4	D	11	0	3	0	0
5	A	1	0	0	1	0
5	B	1	0	0	0	0

Continued on next page...

Continued from previous page...

Mol	Chain	Non-H	H(model)	H(added)	Clashes	Symm-Clashes
5	D	1	0	0	1	0
6	B	1	0	0	0	0
7	B	7	0	10	0	0
7	D	7	0	10	0	0
8	A	423	0	0	3	0
8	B	448	0	0	3	0
8	C	417	0	0	3	0
8	D	433	0	0	2	0
All	All	13778	0	11391	59	0

The all-atom clashscore is defined as the number of clashes found per 1000 atoms (including hydrogen atoms). The all-atom clashscore for this structure is 3.

All (59) close contacts within the same asymmetric unit are listed below, sorted by their clash magnitude.

Atom-1	Atom-2	Interatomic distance (Å)	Clash overlap (Å)
1:D:301:VAL:HG13	8:D:600:HOH:O	1.66	0.93
1:A:243:ARG:NH1	5:A:404[A]:CL:CL	2.50	0.80
1:B:301:VAL:HG13	8:B:633:HOH:O	1.86	0.75
1:C:176:ARG:HD3	8:C:642:HOH:O	1.95	0.66
1:A:176:ARG:HD3	8:A:755:HOH:O	1.96	0.65
1:D:243:ARG:NH1	5:D:405[A]:CL:CL	2.63	0.62
1:D:105:LYS:HD2	1:D:114:ASP:OD1	2.00	0.62
1:C:48:GLU:CD	1:C:48:GLU:H	2.03	0.59
1:C:218[A]:SER:HA	1:C:269:TYR:O	2.03	0.59
1:D:119:GLU:HG3	1:D:314:LEU:HG	1.84	0.58
1:B:302:PRO:HG3	1:B:361:LEU:HD23	1.86	0.58
1:A:218:SER:HA	1:A:269:TYR:O	2.04	0.57
1:B:301:VAL:CG1	8:B:808:HOH:O	2.54	0.56
1:C:330:LEU:C	1:C:330:LEU:HD23	2.30	0.52
1:A:119:GLU:HG3	1:A:314:LEU:HG	1.91	0.52
1:D:302:PRO:HG3	1:D:361:LEU:HD22	1.91	0.52
1:B:301:VAL:HG12	1:D:359:PHE:CE2	2.45	0.52
1:B:301:VAL:HG11	8:B:808:HOH:O	2.10	0.52
1:C:218[B]:SER:HA	1:C:269:TYR:O	2.10	0.51
1:B:248:HIS:HB3	1:B:250:VAL:O	2.11	0.51
1:C:248:HIS:HB3	1:C:250:VAL:O	2.10	0.51
1:D:218[A]:SER:HA	1:D:269:TYR:O	2.12	0.50
1:D:218[B]:SER:HA	1:D:269:TYR:O	2.12	0.50
1:B:101:THR:HG22	1:B:118:VAL:HG12	1.93	0.49
1:B:218[A]:SER:HA	1:B:269:TYR:O	2.12	0.49

Continued on next page...

Continued from previous page...

Atom-1	Atom-2	Interatomic distance (Å)	Clash overlap (Å)
1:A:301:VAL:HG22	8:A:759:HOH:O	2.13	0.48
1:D:185:GLU:HG3	8:D:829:HOH:O	2.12	0.48
1:C:101:THR:HG22	1:C:118:VAL:HG12	1.96	0.47
1:A:248:HIS:HB3	1:A:250:VAL:O	2.15	0.46
1:B:142:TYR:CG	1:C:230:ASP:HB3	2.51	0.46
1:B:230:ASP:HB3	1:C:142:TYR:CG	2.51	0.46
1:D:246:GLY:HA2	1:D:296:TRP:CZ3	2.50	0.46
1:A:230:ASP:HB3	1:D:142:TYR:CG	2.51	0.46
1:C:119:GLU:HG3	1:C:314:LEU:HG	1.97	0.46
1:C:322:ILE:HD13	8:C:743:HOH:O	2.16	0.46
1:C:301[B]:VAL:HG22	8:C:769:HOH:O	2.16	0.45
1:D:330:LEU:C	1:D:330:LEU:HD23	2.37	0.45
1:A:246:GLY:HA2	1:A:296:TRP:CZ3	2.51	0.45
1:A:330:LEU:C	1:A:330:LEU:HD23	2.37	0.45
1:D:105:LYS:HD2	1:D:105:LYS:HA	1.80	0.44
1:B:246:GLY:HA2	1:B:296:TRP:CZ3	2.52	0.44
1:B:218[B]:SER:HA	1:B:269:TYR:O	2.17	0.44
1:D:105:LYS:CD	1:D:114:ASP:OD1	2.65	0.44
1:B:119:GLU:HG3	1:B:314:LEU:HG	2.00	0.44
1:B:347:GLU:OE2	1:B:352:HIS:NE2	2.51	0.43
1:B:175:PHE:HB3	1:B:193:MET:HB2	2.00	0.43
1:D:248:HIS:HB3	1:D:250:VAL:O	2.19	0.43
1:B:229:CYS:HB3	1:D:296:TRP:CD1	2.54	0.43
1:B:151:VAL:HG11	1:B:220:HIS:CE1	2.55	0.42
1:A:85:GLU:HB3	8:A:505:HOH:O	2.19	0.42
1:A:142:TYR:CG	1:D:230:ASP:HB3	2.55	0.42
1:B:50:GLN:HA	1:B:66:LEU:O	2.20	0.42
1:A:357:LYS:O	1:C:301[A]:VAL:HG11	2.21	0.41
1:D:77[A]:MET:HE3	1:D:156:PHE:CD2	2.55	0.41
1:B:330:LEU:C	1:B:330:LEU:HD23	2.40	0.41
1:C:246:GLY:HA2	1:C:296:TRP:CZ3	2.55	0.41
1:A:151:VAL:HG11	1:A:220:HIS:CE1	2.56	0.41
1:A:193:MET:HG2	1:A:202[B]:THR:O	2.21	0.41
1:A:200[B]:ASN:HD21	1:A:202[B]:THR:C	2.24	0.40

There are no symmetry-related clashes.

5.3 Torsion angles

5.3.1 Protein backbone

In the following table, the Percentiles column shows the percent Ramachandran outliers of the chain as a percentile score with respect to all X-ray entries followed by that with respect to entries of similar resolution.

The Analysed column shows the number of residues for which the backbone conformation was analysed, and the total number of residues.

Mol	Chain	Analysed	Favoured	Allowed	Outliers	Percentiles	
1	A	365/365 (100%)	355 (97%)	10 (3%)	0	100	100
1	B	371/365 (102%)	363 (98%)	7 (2%)	1 (0%)	46	22
1	C	363/365 (100%)	354 (98%)	9 (2%)	0	100	100
1	D	367/365 (100%)	359 (98%)	8 (2%)	0	100	100
All	All	1466/1460 (100%)	1431 (98%)	34 (2%)	1 (0%)	56	29

All (1) Ramachandran outliers are listed below:

Mol	Chain	Res	Type
1	B	251	SER

5.3.2 Protein sidechains

In the following table, the Percentiles column shows the percent sidechain outliers of the chain as a percentile score with respect to all X-ray entries followed by that with respect to entries of similar resolution.

The Analysed column shows the number of residues for which the sidechain conformation was analysed, and the total number of residues.

Mol	Chain	Analysed	Rotameric	Outliers	Percentiles	
1	A	316/313 (101%)	310 (98%)	6 (2%)	65	37
1	B	321/313 (103%)	314 (98%)	7 (2%)	60	30
1	C	315/313 (101%)	311 (99%)	4 (1%)	76	55
1	D	317/313 (101%)	312 (98%)	5 (2%)	70	45
All	All	1269/1252 (101%)	1247 (98%)	22 (2%)	66	42

All (22) residues with a non-rotameric sidechain are listed below:

Mol	Chain	Res	Type
1	A	4	GLU
1	A	85	GLU
1	A	120	ASP
1	A	169	TYR
1	A	193	MET
1	A	260	ASP
1	B	120	ASP
1	B	168	LYS
1	B	169	TYR
1	B	173	LEU
1	B	193	MET
1	B	260	ASP
1	B	320	GLU
1	C	4	GLU
1	C	120	ASP
1	C	193	MET
1	C	260	ASP
1	D	120	ASP
1	D	168	LYS
1	D	169	TYR
1	D	193	MET
1	D	260	ASP

Some sidechains can be flipped to improve hydrogen bonding and reduce clashes. All (1) such sidechains are listed below:

Mol	Chain	Res	Type
1	A	354	GLN

5.3.3 RNA ⓘ

There are no RNA molecules in this entry.

5.4 Non-standard residues in protein, DNA, RNA chains ⓘ

There are no non-standard protein/DNA/RNA residues in this entry.

5.5 Carbohydrates ⓘ

There are no carbohydrates in this entry.

5.6 Ligand geometry

Of 19 ligands modelled in this entry, 8 are monoatomic - leaving 11 for Mogul analysis.

In the following table, the Counts columns list the number of bonds (or angles) for which Mogul statistics could be retrieved, the number of bonds (or angles) that are observed in the model and the number of bonds (or angles) that are defined in the chemical component dictionary. The Link column lists molecule types, if any, to which the group is linked. The Z score for a bond length (or angle) is the number of standard deviations the observed value is removed from the expected value. A bond length (or angle) with $|Z| > 2$ is considered an outlier worth inspection. RMSZ is the root-mean-square of all Z scores of the bond lengths (or angles).

Mol	Type	Chain	Res	Link	Bond lengths			Bond angles		
					Counts	RMSZ	# Z > 2	Counts	RMSZ	# Z > 2
3	P6G	A	402	-	18,18,18	0.53	0	17,17,17	0.45	0
4	4NC	A	403[B]	2	9,11,11	2.59	2 (22%)	12,15,15	0.95	0
3	P6G	B	403	-	18,18,18	0.53	0	17,17,17	0.60	0
3	P6G	B	404	-	18,18,18	0.62	0	17,17,17	0.52	0
7	PEG	B	405	-	6,6,6	0.87	0	5,5,5	1.28	0
4	4NC	B	406[B]	2	9,11,11	2.95	3 (33%)	12,15,15	2.20	3 (25%)
3	P6G	C	402	-	18,18,18	0.47	0	17,17,17	0.74	0
4	4NC	C	403	2	9,11,11	2.87	3 (33%)	12,15,15	1.74	2 (16%)
3	P6G	D	402	-	18,18,18	0.62	0	17,17,17	0.40	0
7	PEG	D	403	-	6,6,6	0.73	0	5,5,5	0.33	0
4	4NC	D	404[B]	2	9,11,11	2.43	2 (22%)	12,15,15	1.33	1 (8%)

In the following table, the Chirals column lists the number of chiral outliers, the number of chiral centers analysed, the number of these observed in the model and the number defined in the chemical component dictionary. Similar counts are reported in the Torsion and Rings columns. '-' means no outliers of that kind were identified.

Mol	Type	Chain	Res	Link	Chirals	Torsions	Rings
3	P6G	A	402	-	-	0/16/16/16	0/0/0/0
4	4NC	A	403[B]	2	-	0/4/4/4	0/1/1/1
3	P6G	B	403	-	-	0/16/16/16	0/0/0/0
3	P6G	B	404	-	-	0/16/16/16	0/0/0/0
7	PEG	B	405	-	-	0/4/4/4	0/0/0/0
4	4NC	B	406[B]	2	-	0/4/4/4	0/1/1/1
3	P6G	C	402	-	-	0/16/16/16	0/0/0/0
4	4NC	C	403	2	-	0/4/4/4	0/1/1/1
3	P6G	D	402	-	-	0/16/16/16	0/0/0/0
7	PEG	D	403	-	-	0/4/4/4	0/0/0/0
4	4NC	D	404[B]	2	-	0/4/4/4	0/1/1/1

All (10) bond length outliers are listed below:

Mol	Chain	Res	Type	Atoms	Z	Observed(Å)	Ideal(Å)
4	C	403	4NC	O7-C1	-2.51	1.31	1.36
4	B	406[B]	4NC	C3-C2	2.99	1.43	1.38
4	A	403[B]	4NC	C2-C1	3.70	1.46	1.40
4	D	404[B]	4NC	C2-C1	4.24	1.47	1.40
4	C	403	4NC	C2-C1	4.57	1.48	1.40
4	B	406[B]	4NC	C2-C1	4.71	1.48	1.40
4	D	404[B]	4NC	O10-N9	5.10	1.32	1.22
4	A	403[B]	4NC	O10-N9	6.13	1.34	1.22
4	C	403	4NC	O10-N9	6.28	1.35	1.22
4	B	406[B]	4NC	O10-N9	6.38	1.35	1.22

All (6) bond angle outliers are listed below:

Mol	Chain	Res	Type	Atoms	Z	Observed(°)	Ideal(°)
4	B	406[B]	4NC	C5-C4-N9	-4.88	116.01	119.51
4	B	406[B]	4NC	O10-N9-C4	-4.28	115.58	118.67
4	C	403	4NC	C3-C4-N9	-3.59	115.58	118.74
4	D	404[B]	4NC	C5-C4-N9	-2.11	118.00	119.51
4	B	406[B]	4NC	C6-C5-C4	2.09	123.01	120.13
4	C	403	4NC	C5-C4-N9	3.80	122.24	119.51

There are no chirality outliers.

There are no torsion outliers.

There are no ring outliers.

No monomer is involved in short contacts.

5.7 Other polymers [i](#)

There are no such residues in this entry.

5.8 Polymer linkage issues [i](#)

There are no chain breaks in this entry.

6 Fit of model and data ⓘ

6.1 Protein, DNA and RNA chains ⓘ

In the following table, the column labelled ‘#RSRZ> 2’ contains the number (and percentage) of RSRZ outliers, followed by percent RSRZ outliers for the chain as percentile scores relative to all X-ray entries and entries of similar resolution. The OWAB column contains the minimum, median, 95th percentile and maximum values of the occupancy-weighted average B-factor per residue. The column labelled ‘Q< 0.9’ lists the number of (and percentage) of residues with an average occupancy less than 0.9.

Mol	Chain	Analysed	<RSRZ>	#RSRZ>2	OWAB(Å ²)	Q<0.9
1	A	355/365 (97%)	-0.19	4 (1%) 82 83	12, 20, 36, 50	0
1	B	359/365 (98%)	-0.16	1 (0%) 94 94	11, 18, 31, 48	0
1	C	353/365 (96%)	-0.10	8 (2%) 64 64	11, 18, 32, 54	0
1	D	359/365 (98%)	-0.10	5 (1%) 78 78	11, 18, 32, 50	0
All	All	1426/1460 (97%)	-0.14	18 (1%) 79 80	11, 18, 33, 54	0

All (18) RSRZ outliers are listed below:

Mol	Chain	Res	Type	RSRZ
1	C	355	ALA	5.7
1	D	322	ILE	3.5
1	C	354	GLN	3.2
1	C	356	SER	2.9
1	A	355	ALA	2.8
1	C	351	TYR	2.7
1	A	85	GLU	2.6
1	A	337	ASP	2.6
1	C	353	GLY	2.6
1	B	226[A]	ILE	2.6
1	D	320	GLU	2.5
1	D	4	GLU	2.5
1	A	9	VAL	2.5
1	D	321	ILE	2.3
1	C	348	ASP	2.3
1	C	226[A]	ILE	2.2
1	D	225	ILE	2.2
1	C	347	GLU	2.1

6.2 Non-standard residues in protein, DNA, RNA chains [i](#)

There are no non-standard protein/DNA/RNA residues in this entry.

6.3 Carbohydrates [i](#)

There are no carbohydrates in this entry.

6.4 Ligands [i](#)

In the following table, the Atoms column lists the number of modelled atoms in the group and the number defined in the chemical component dictionary. LLDF column lists the quality of electron density of the group with respect to its neighbouring residues in protein, DNA or RNA chains. The B-factors column lists the minimum, median, 95th percentile and maximum values of B factors of atoms in the group. The column labelled 'Q< 0.9' lists the number of atoms with occupancy less than 0.9.

Mol	Type	Chain	Res	Atoms	RSCC	RSR	LLDF	B-factors(Å ²)	Q<0.9
4	4NC	B	406[B]	11/11	0.94	0.14	4.51	11,16,19,23	11
7	PEG	B	405	7/7	0.84	0.11	3.56	37,39,41,41	0
4	4NC	A	403[B]	11/11	0.97	0.10	3.27	14,16,18,21	11
3	P6G	B	404	19/19	0.91	0.10	2.79	29,34,38,40	0
4	4NC	C	403	11/11	0.96	0.10	2.60	10,11,15,18	11
4	4NC	D	404[B]	11/11	0.94	0.10	2.46	11,14,17,20	11
7	PEG	D	403	7/7	0.79	0.15	1.74	36,39,48,48	0
3	P6G	A	402	19/19	0.93	0.11	1.26	23,30,49,51	0
3	P6G	D	402	19/19	0.95	0.11	1.04	18,26,44,51	0
3	P6G	B	403	19/19	0.95	0.11	0.53	19,24,42,48	0
3	P6G	C	402	19/19	0.95	0.08	0.30	18,21,39,48	0
6	CA	B	402	1/1	1.00	0.05	-0.96	15,15,15,15	0
2	FE2	B	401	1/1	1.00	0.06	-1.84	14,14,14,14	0
2	FE2	C	401	1/1	1.00	0.06	-1.91	14,14,14,14	0
2	FE2	D	401	1/1	1.00	0.05	-2.51	14,14,14,14	0
2	FE2	A	401	1/1	1.00	0.06	-2.86	17,17,17,17	0
5	CL	B	407[A]	1/1	0.99	0.11	-	12,12,12,12	1
5	CL	A	404[A]	1/1	0.98	0.12	-	18,18,18,18	1
5	CL	D	405[A]	1/1	1.00	0.09	-	16,16,16,16	1

6.5 Other polymers [i](#)

There are no such residues in this entry.