



Full wwPDB X-ray Structure Validation Report ⓘ

Jan 31, 2016 – 11:57 PM GMT

PDB ID : 1Z8N
Title : Crystal structure of Arabidopsis thaliana Acetohydroxyacid synthase In Complex With An Imidazolinone Herbicide, Imazaquin
Authors : McCourt, J.A.; Pang, S.S.; King-Scott, J.; Guddat, L.W.; Duggleby, R.G.
Deposited on : 2005-03-31
Resolution : 2.80 Å(reported)

This is a Full wwPDB X-ray Structure Validation Report for a publicly released PDB entry.
We welcome your comments at validation@mail.wwpdb.org
A user guide is available at
<http://wwpdb.org/validation/2016/XrayValidationReportHelp>
with specific help available everywhere you see the ⓘ symbol.

The following versions of software and data (see [references ⓘ](#)) were used in the production of this report:

MolProbity : 4.02b-467
Mogul : 1.7 (RC4), CSD as536be (2015)
Xtriage (Phenix) : 1.9-1692
EDS : rb-20026688
Percentile statistics : 20151230.v01 (using entries in the PDB archive December 30th 2015)
Refmac : 5.8.0135
CCP4 : 6.5.0
Ideal geometry (proteins) : Engh & Huber (2001)
Ideal geometry (DNA, RNA) : Parkinson et al. (1996)
Validation Pipeline (wwPDB-VP) : trunk26865

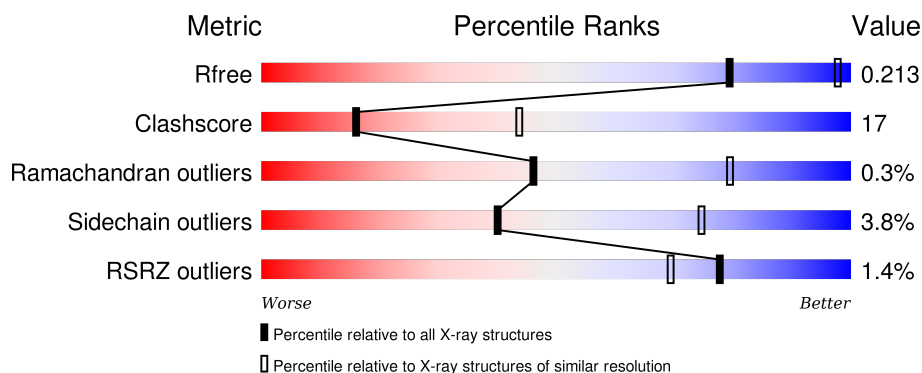
1 Overall quality at a glance ⓘ

The following experimental techniques were used to determine the structure:

X-RAY DIFFRACTION

The reported resolution of this entry is 2.80 Å.

Percentile scores (ranging between 0-100) for global validation metrics of the entry are shown in the following graphic. The table shows the number of entries on which the scores are based.



Metric	Whole archive (#Entries)	Similar resolution (#Entries, resolution range(Å))
R_{free}	91344	2393 (2.80-2.80)
Clashscore	102246	2827 (2.80-2.80)
Ramachandran outliers	100387	2782 (2.80-2.80)
Sidechain outliers	100360	2784 (2.80-2.80)
RSRZ outliers	91569	2404 (2.80-2.80)

The table below summarises the geometric issues observed across the polymeric chains and their fit to the electron density. The red, orange, yellow and green segments on the lower bar indicate the fraction of residues that contain outliers for ≥ 3 , 2, 1 and 0 types of geometric quality criteria. A grey segment represents the fraction of residues that are not modelled. The numeric value for each fraction is indicated below the corresponding segment, with a dot representing fractions $\leq 5\%$. The upper red bar (where present) indicates the fraction of residues that have poor fit to the electron density. The numeric value is given above the bar.

Mol	Chain	Length	Quality of chain
1	A	590	<div> <div></div> <div>65%</div> <div>32%</div> <div>..</div> </div>

The following table lists non-polymeric compounds, carbohydrate monomers and non-standard residues in protein, DNA, RNA chains that are outliers for geometric or electron-density-fit criteria:

Mol	Type	Chain	Res	Chirality	Geometry	Clashes	Electron density
3	1IQ	A	694	-	-	-	X

Continued on next page...

Continued from previous page...

Mol	Type	Chain	Res	Chirality	Geometry	Clashes	Electron density
3	1IQ	A	695	-	-	-	X
4	NHE	A	696	-	-	-	X

2 Entry composition

There are 7 unique types of molecules in this entry. The entry contains 4856 atoms, of which 0 are hydrogens and 0 are deuteriums.

In the tables below, the ZeroOcc column contains the number of atoms modelled with zero occupancy, the AltConf column contains the number of residues with at least one atom in alternate conformation and the Trace column contains the number of residues modelled with at most 2 atoms.

- Molecule 1 is a protein called Acetolactate synthase.

Mol	Chain	Residues	Atoms					ZeroOcc	AltConf	Trace
1	A	582	Total	C	N	O	S	0	0	0
			4430	2809	763	834	24			

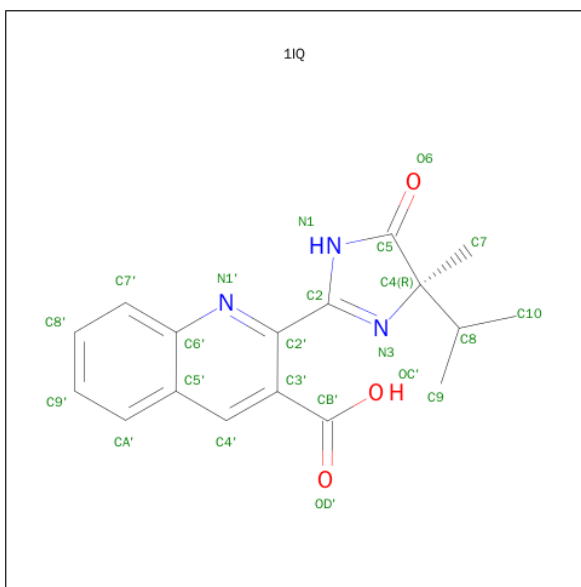
There are 9 discrepancies between the modelled and reference sequences:

Chain	Residue	Modelled	Actual	Comment	Reference
A	340	CSD	CYS	MODIFIED RESIDUE	UNP P17597
A	668	LEU	-	EXPRESSION TAG	UNP P17597
A	669	GLU	-	EXPRESSION TAG	UNP P17597
A	670	HIS	-	EXPRESSION TAG	UNP P17597
A	671	HIS	-	EXPRESSION TAG	UNP P17597
A	672	HIS	-	EXPRESSION TAG	UNP P17597
A	673	HIS	-	EXPRESSION TAG	UNP P17597
A	674	HIS	-	EXPRESSION TAG	UNP P17597
A	675	HIS	-	EXPRESSION TAG	UNP P17597

- Molecule 2 is MAGNESIUM ION (three-letter code: MG) (formula: Mg).

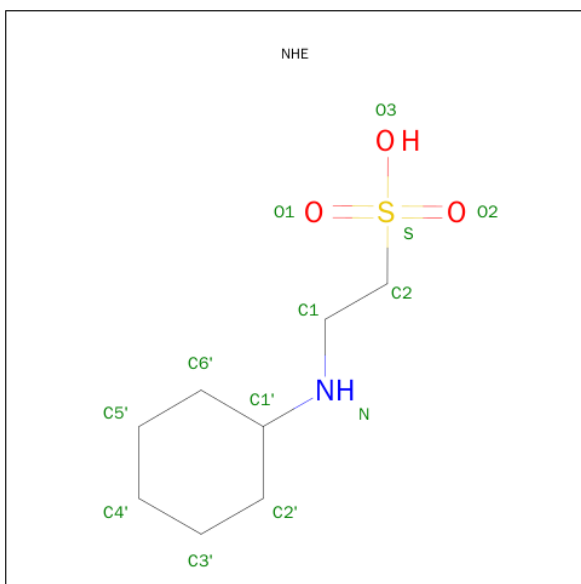
Mol	Chain	Residues	Atoms		ZeroOcc	AltConf
2	A	1	Total	Mg	0	0
			1	1		

- Molecule 3 is 2-(4-ISOPROPYL-4-METHYL-5-OXO-4,5-DIHYDRO-1H-IMIDAZOL-2-YL) QUINOLINE-3-CARBOXYLIC ACID (three-letter code: 1IQ) (formula: C₁₇H₁₇N₃O₃).



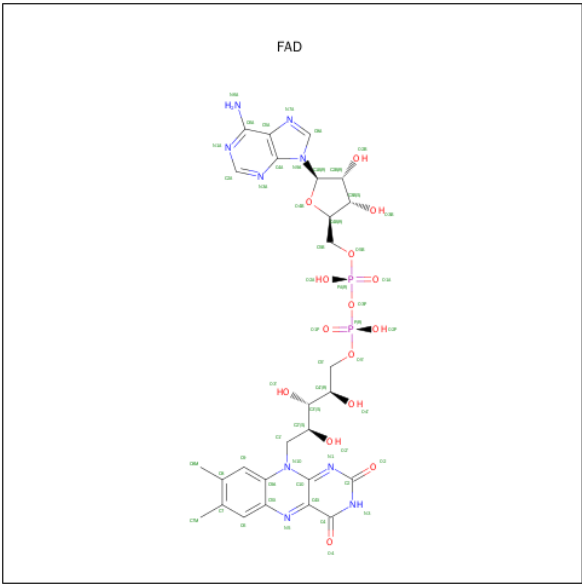
Mol	Chain	Residues	Atoms				ZeroOcc	AltConf
3	A	1	Total	C	N	O	0	0
			23	17	3	3		
3	A	1	Total	C	N	O	0	0
			23	17	3	3		

- Molecule 4 is 2-[N-CYCLOHEXYLAMINO]ETHANE SULFONIC ACID (three-letter code: NHE) (formula: $C_8H_{17}NO_3S$).



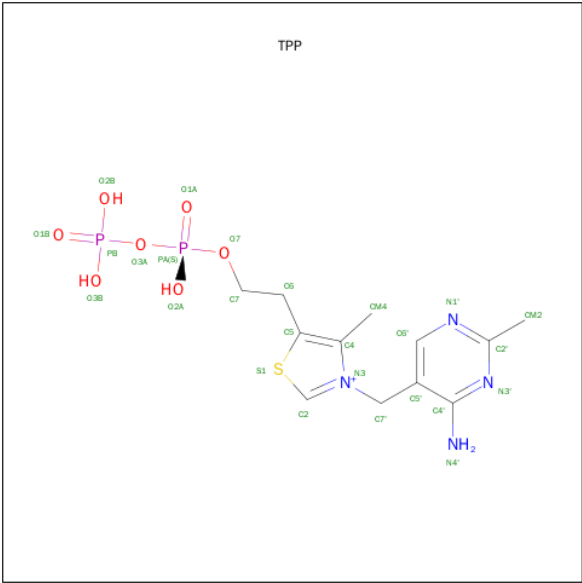
Mol	Chain	Residues	Atoms					ZeroOcc	AltConf
4	A	1	Total	C	N	O	S	0	0
			13	8	1	3	1		

- Molecule 5 is FLAVIN-ADENINE DINUCLEOTIDE (three-letter code: FAD) (formula: $C_{27}H_{33}N_9O_{15}P_2$).



Mol	Chain	Residues	Atoms					ZeroOcc	AltConf
5	A	1	Total	C	N	O	P	0	0
			53	27	9	15	2		

- Molecule 6 is THIAMINE DIPHOSPHATE (three-letter code: TPP) (formula: $C_{12}H_{19}N_4O_7P_2S$).



Mol	Chain	Residues	Atoms						ZeroOcc	AltConf
6	A	1	Total	C	N	O	P	S	0	0
			26	12	4	7	2	1		

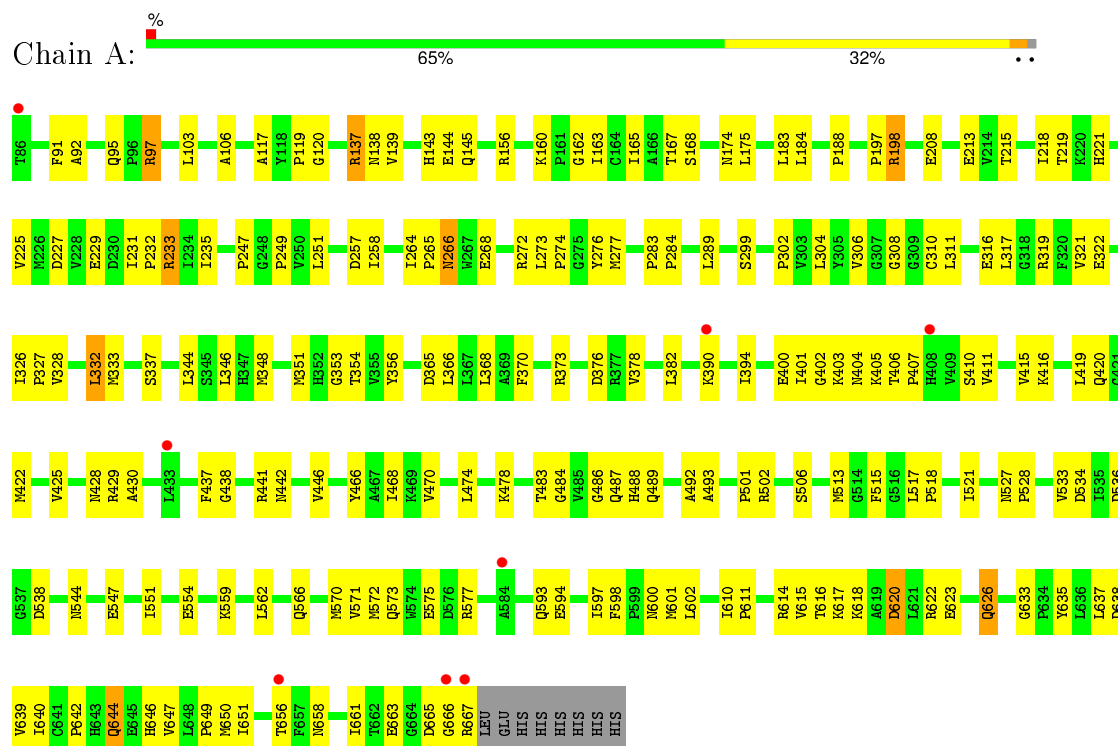
- Molecule 7 is water.

Mol	Chain	Residues	Atoms		ZeroOcc	AltConf
7	A	287	Total 287	O 287	0	0

3 Residue-property plots

These plots are drawn for all protein, RNA and DNA chains in the entry. The first graphic for a chain summarises the proportions of errors displayed in the second graphic. The second graphic shows the sequence view annotated by issues in geometry and electron density. Residues are color-coded according to the number of geometric quality criteria for which they contain at least one outlier: green = 0, yellow = 1, orange = 2 and red = 3 or more. A red dot above a residue indicates a poor fit to the electron density ($\text{RSRZ} > 2$). Stretches of 2 or more consecutive residues without any outlier are shown as a green connector. Residues present in the sample, but not in the model, are shown in grey.

- Molecule 1: Acetolactate synthase



4 Data and refinement statistics

Property	Value	Source
Space group	P 64 2 2	Depositor
Cell constants a, b, c, α , β , γ	179.08Å 179.08Å 186.08Å 90.00° 90.00° 120.00°	Depositor
Resolution (Å)	50.00 – 2.80 80.68 – 2.79	Depositor EDS
% Data completeness (in resolution range)	84.3 (50.00-2.80) 84.0 (80.68-2.79)	Depositor EDS
R_{merge}	0.06	Depositor
R_{sym}	(Not available)	Depositor
$\langle I/\sigma(I) \rangle$ ¹	5.30 (at 2.82Å)	Xtriage
Refinement program	CNS	Depositor
R, R_{free}	0.199 , 0.216 0.200 , 0.213	Depositor DCC
R_{free} test set	3486 reflections (9.44%)	DCC
Wilson B-factor (Å ²)	56.7	Xtriage
Anisotropy	0.370	Xtriage
Bulk solvent k_{sol} (e/Å ³), B_{sol} (Å ²)	0.33 , 66.6	EDS
Estimated twinning fraction	No twinning to report.	Xtriage
L-test for twinning ²	$\langle L \rangle = 0.50$, $\langle L^2 \rangle = 0.33$	Xtriage
Outliers	0 of 40076 reflections	Xtriage
F_o, F_c correlation	0.94	EDS
Total number of atoms	4856	wwPDB-VP
Average B, all atoms (Å ²)	65.0	wwPDB-VP

Xtriage's analysis on translational NCS is as follows: *The largest off-origin peak in the Patterson function is 2.17% of the height of the origin peak. No significant pseudotranslation is detected.*

¹Intensities estimated from amplitudes.

²Theoretical values of $\langle |L| \rangle$, $\langle L^2 \rangle$ for acentric reflections are 0.5, 0.375 respectively for untwinned datasets, and 0.333, 0.2 for perfectly twinned datasets.

5 Model quality

5.1 Standard geometry

Bond lengths and bond angles in the following residue types are not validated in this section: NHE, MG, CSD, TPP, IIQ, FAD

The Z score for a bond length (or angle) is the number of standard deviations the observed value is removed from the expected value. A bond length (or angle) with $|Z| > 5$ is considered an outlier worth inspection. RMSZ is the root-mean-square of all Z scores of the bond lengths (or angles).

Mol	Chain	Bond lengths		Bond angles	
		RMSZ	# $ Z > 5$	RMSZ	# $ Z > 5$
1	A	0.34	0/4518	0.58	0/6139

There are no bond length outliers.

There are no bond angle outliers.

There are no chirality outliers.

There are no planarity outliers.

5.2 Too-close contacts

In the following table, the Non-H and H(model) columns list the number of non-hydrogen atoms and hydrogen atoms in the chain respectively. The H(added) column lists the number of hydrogen atoms added and optimized by MolProbity. The Clashes column lists the number of clashes within the asymmetric unit, whereas Symm-Clashes lists symmetry related clashes.

Mol	Chain	Non-H	H(model)	H(added)	Clashes	Symm-Clashes
1	A	4430	0	4390	152	0
2	A	1	0	0	0	0
3	A	46	0	32	2	0
4	A	13	0	17	2	0
5	A	53	0	31	1	0
6	A	26	0	16	2	0
7	A	287	0	0	24	0
All	All	4856	0	4486	153	0

The all-atom clashscore is defined as the number of clashes found per 1000 atoms (including hydrogen atoms). The all-atom clashscore for this structure is 17.

All (153) close contacts within the same asymmetric unit are listed below, sorted by their clash magnitude.

Atom-1	Atom-2	Interatomic distance (Å)	Clash overlap (Å)
1:A:311:LEU:HD22	1:A:501:PRO:HB3	1.41	0.98
1:A:573:GLN:NE2	1:A:647:VAL:H	1.68	0.90
1:A:332:LEU:HD12	1:A:348:MET:HE1	1.52	0.89
1:A:145:GLN:HE21	1:A:544:ASN:HD21	1.23	0.84
1:A:573:GLN:HE22	1:A:647:VAL:H	1.22	0.83
1:A:635:TYR:HA	7:A:4054:HOH:O	1.79	0.82
1:A:566:GLN:HE22	1:A:598:PHE:H	1.27	0.80
1:A:143:HIS:HD2	1:A:145:GLN:H	1.32	0.77
1:A:615:VAL:HG23	1:A:637:LEU:HD11	1.64	0.77
1:A:559:LYS:HE2	1:A:633:GLY:O	1.87	0.74
1:A:615:VAL:CG2	1:A:637:LEU:HD11	2.18	0.72
1:A:483:THR:HG22	1:A:484:GLY:O	1.91	0.70
1:A:117:ALA:H	1:A:138:ASN:HD21	1.39	0.70
1:A:227:ASP:OD2	1:A:229:GLU:HB2	1.92	0.69
1:A:394:ILE:HG12	1:A:411:VAL:HB	1.73	0.69
1:A:308:GLY:HA3	7:A:4030:HOH:O	1.92	0.69
1:A:273:LEU:O	1:A:277:MET:HG2	1.93	0.69
1:A:120:GLY:HA3	1:A:167:THR:HB	1.76	0.67
1:A:188:PRO:HG3	1:A:247:PRO:HB3	1.75	0.66
1:A:137:ARG:HD2	7:A:4154:HOH:O	1.95	0.66
1:A:117:ALA:HB2	1:A:165:ILE:HB	1.78	0.65
1:A:92:ALA:HB3	1:A:95:GLN:HB2	1.77	0.65
1:A:91:PHE:HB2	1:A:97:ARG:NH2	2.11	0.64
1:A:466:TYR:O	1:A:470:VAL:HG23	1.97	0.64
1:A:137:ARG:HB3	7:A:4081:HOH:O	1.97	0.63
1:A:97:ARG:HD2	1:A:97:ARG:N	2.13	0.63
1:A:308:GLY:CA	7:A:4030:HOH:O	2.48	0.61
1:A:97:ARG:HD2	1:A:97:ARG:H	1.65	0.61
1:A:501:PRO:HD2	7:A:4241:HOH:O	2.01	0.60
1:A:273:LEU:N	1:A:274:PRO:HD3	2.16	0.60
1:A:622:ARG:HD2	7:A:4202:HOH:O	2.02	0.59
1:A:573:GLN:HG3	1:A:646:HIS:CD2	2.38	0.59
1:A:562:LEU:CD2	1:A:601:MET:HG2	2.33	0.58
1:A:144:GLU:HB2	1:A:174:ASN:HB3	1.85	0.58
1:A:517:LEU:HB3	1:A:518:PRO:HD3	1.85	0.58
1:A:622:ARG:HD3	7:A:4063:HOH:O	2.02	0.58
1:A:117:ALA:CB	1:A:165:ILE:HB	2.35	0.57
1:A:573:GLN:NE2	1:A:647:VAL:N	2.48	0.57
6:A:702:TPP:HM41	6:A:702:TPP:H71	1.86	0.57
1:A:143:HIS:CD2	1:A:145:GLN:H	2.18	0.56
1:A:162:GLY:C	1:A:163:ILE:HD12	2.26	0.56
1:A:617:LYS:HB2	1:A:620:ASP:OD2	2.05	0.56

Continued on next page...

Continued from previous page...

Atom-1	Atom-2	Interatomic distance (Å)	Clash overlap (Å)
1:A:120:GLY:HA3	1:A:167:THR:CB	2.36	0.56
1:A:521:ILE:HG12	1:A:551:ILE:HD13	1.87	0.56
1:A:403:LYS:HD2	1:A:404:ASN:OD1	2.06	0.55
1:A:515:PHE:O	1:A:518:PRO:HD2	2.06	0.55
1:A:332:LEU:HD23	1:A:333:MET:HE3	1.88	0.55
1:A:474:LEU:HD13	1:A:626:GLN:HG2	1.88	0.55
1:A:344:LEU:HD21	1:A:441:ARG:HD3	1.89	0.55
1:A:376:ASP:HB3	3:A:695:1IQ:H4'	1.88	0.55
1:A:484:GLY:H	1:A:488:HIS:HE1	1.54	0.54
1:A:513:MET:SD	6:A:702:TPP:HM42	2.47	0.54
1:A:483:THR:CG2	1:A:484:GLY:N	2.71	0.54
1:A:317:LEU:O	1:A:321:VAL:HG23	2.07	0.54
1:A:437:PHE:HA	7:A:4170:HOH:O	2.08	0.53
1:A:442:ASN:O	1:A:446:VAL:HG23	2.09	0.52
1:A:483:THR:HG22	1:A:484:GLY:N	2.24	0.52
1:A:304:LEU:HD12	1:A:328:VAL:HG22	1.92	0.52
1:A:321:VAL:HG12	1:A:344:LEU:HD13	1.92	0.51
1:A:156:ARG:O	1:A:502:ARG:HG3	2.11	0.51
1:A:304:LEU:HD23	1:A:368:LEU:HB2	1.93	0.51
1:A:348:MET:HE3	1:A:493:ALA:HB1	1.94	0.50
1:A:644:GLN:HG3	1:A:667:ARG:HD3	1.93	0.50
1:A:144:GLU:HB3	1:A:175:LEU:HD23	1.93	0.50
1:A:225:VAL:HG12	1:A:258:ILE:HD13	1.92	0.50
1:A:571:VAL:O	1:A:575:GLU:HG3	2.12	0.49
1:A:521:ILE:HG12	1:A:551:ILE:CD1	2.42	0.49
1:A:233:ARG:HD3	7:A:4115:HOH:O	2.12	0.49
1:A:416:LYS:O	1:A:420:GLN:HG3	2.13	0.49
1:A:103:LEU:CD1	1:A:235:ILE:HD11	2.43	0.49
1:A:251:LEU:HD23	1:A:251:LEU:C	2.34	0.48
1:A:611:PRO:HG2	7:A:4054:HOH:O	2.12	0.48
1:A:274:PRO:HD2	4:A:696:NHE:O2	2.14	0.48
1:A:353:GLY:O	1:A:649:PRO:HG2	2.14	0.48
1:A:600:ASN:OD1	1:A:602:LEU:HB2	2.14	0.47
1:A:168:SER:HB2	7:A:4259:HOH:O	2.13	0.47
1:A:366:LEU:HD12	1:A:390:LYS:O	2.14	0.47
1:A:401:ILE:HG21	1:A:410:SER:HB2	1.94	0.47
1:A:316:GLU:HB3	1:A:419:LEU:HB3	1.97	0.47
1:A:272:ARG:C	1:A:274:PRO:HD3	2.33	0.47
1:A:428:ASN:C	1:A:430:ALA:H	2.18	0.47
1:A:354:THR:HB	1:A:356:TYR:CE2	2.50	0.47
1:A:486:GLY:O	1:A:489:GLN:HB3	2.15	0.47

Continued on next page...

Continued from previous page...

Atom-1	Atom-2	Interatomic distance (Å)	Clash overlap (Å)
1:A:103:LEU:HD11	1:A:235:ILE:HD11	1.97	0.46
1:A:351:MET:HG3	1:A:651:ILE:O	2.14	0.46
1:A:289:LEU:HD22	1:A:422:MET:HG3	1.97	0.46
1:A:573:GLN:HE22	1:A:647:VAL:N	2.01	0.46
1:A:119:PRO:C	7:A:4108:HOH:O	2.53	0.46
1:A:572:MET:HA	1:A:575:GLU:OE1	2.15	0.46
1:A:644:GLN:HB3	1:A:666:GLY:O	2.15	0.46
1:A:527:ASN:ND2	7:A:4085:HOH:O	2.48	0.46
1:A:528:PRO:HG3	7:A:4269:HOH:O	2.15	0.46
1:A:163:ILE:HD12	1:A:163:ILE:N	2.31	0.45
1:A:266:ASN:ND2	1:A:268:GLU:H	2.14	0.45
1:A:614:ARG:HD3	1:A:638:ASP:OD2	2.17	0.45
1:A:382:LEU:O	1:A:405:LYS:HE3	2.16	0.45
1:A:597:ILE:HD13	1:A:640:ILE:CD1	2.46	0.45
1:A:160:LYS:HG2	7:A:4070:HOH:O	2.15	0.45
1:A:276:TYR:HA	3:A:694:1IQ:H7'	1.99	0.45
1:A:610:ILE:HG23	7:A:4054:HOH:O	2.17	0.45
1:A:197:PRO:HA	1:A:257:ASP:OD1	2.16	0.45
1:A:117:ALA:H	1:A:138:ASN:ND2	2.11	0.45
1:A:139:VAL:HG13	1:A:554:GLU:HG3	1.99	0.45
1:A:183:LEU:HD22	1:A:218:ILE:C	2.37	0.44
1:A:642:PRO:HB2	1:A:644:GLN:HE21	1.83	0.44
1:A:319:ARG:HA	1:A:322:GLU:HG2	2.00	0.44
1:A:198:ARG:HH11	1:A:198:ARG:HG2	1.83	0.44
1:A:92:ALA:HB3	1:A:95:GLN:CB	2.44	0.44
1:A:466:TYR:CD2	1:A:618:LYS:HE3	2.53	0.44
1:A:438:GLY:N	1:A:441:ARG:HH21	2.16	0.44
1:A:425:VAL:HG13	1:A:429:ARG:HD3	2.00	0.44
1:A:373:ARG:NE	5:A:701:FAD:O2A	2.51	0.44
1:A:402:GLY:HA2	1:A:407:PRO:HD3	1.99	0.43
1:A:487:GLN:HG3	1:A:570:MET:N	2.32	0.43
1:A:266:ASN:HD21	1:A:268:GLU:HB2	1.83	0.43
1:A:533:VAL:HG22	1:A:559:LYS:HB2	1.99	0.43
1:A:566:GLN:NE2	1:A:597:ILE:HA	2.34	0.43
1:A:428:ASN:HB2	7:A:4190:HOH:O	2.18	0.43
1:A:610:ILE:CG2	7:A:4054:HOH:O	2.67	0.42
1:A:231:ILE:HB	1:A:232:PRO:HD3	2.01	0.42
1:A:370:PHE:HB3	1:A:415:VAL:HG21	2.00	0.42
1:A:219:THR:HA	1:A:249:PRO:HG2	2.01	0.42
1:A:221:HIS:ND1	4:A:696:NHE:H2'2	2.34	0.42
1:A:468:ILE:HD13	1:A:492:ALA:HA	2.02	0.42

Continued on next page...

Continued from previous page...

Atom-1	Atom-2	Interatomic distance (Å)	Clash overlap (Å)
1:A:478:LYS:HG2	7:A:4046:HOH:O	2.19	0.42
1:A:593:GLN:HA	7:A:4126:HOH:O	2.19	0.42
1:A:483:THR:HG21	1:A:489:GLN:HA	2.01	0.42
1:A:562:LEU:HD21	1:A:601:MET:HG2	2.01	0.41
1:A:327:PRO:HB2	1:A:346:LEU:HD11	2.02	0.41
1:A:547:GLU:O	1:A:551:ILE:HG12	2.20	0.41
1:A:376:ASP:C	1:A:378:VAL:H	2.24	0.41
1:A:302:PRO:O	1:A:326:ILE:HG23	2.21	0.41
1:A:573:GLN:HE21	1:A:646:HIS:HA	1.85	0.41
1:A:137:ARG:HG3	1:A:138:ASN:N	2.34	0.41
1:A:538:ASP:OD2	1:A:566:GLN:HA	2.21	0.41
1:A:406:THR:HA	1:A:407:PRO:HD3	1.87	0.41
1:A:233:ARG:HB3	1:A:233:ARG:HH11	1.85	0.41
1:A:213:GLU:HG3	7:A:4017:HOH:O	2.21	0.41
1:A:400:GLU:OE1	1:A:403:LYS:HE3	2.21	0.41
1:A:103:LEU:O	1:A:106:ALA:HB3	2.21	0.41
1:A:351:MET:O	1:A:650:MET:HA	2.20	0.41
1:A:306:VAL:HG13	1:A:310:CYS:SG	2.61	0.41
1:A:299:SER:HB2	1:A:365:ASP:OD1	2.20	0.41
1:A:283:PRO:HA	1:A:284:PRO:HD3	1.86	0.41
1:A:577:ARG:NH1	1:A:661:ILE:HG21	2.35	0.41
1:A:337:SER:HA	1:A:501:PRO:HG3	2.01	0.41
1:A:597:ILE:HD13	1:A:640:ILE:HD11	2.02	0.41
1:A:302:PRO:HG3	1:A:437:PHE:CZ	2.56	0.40
1:A:215:THR:O	1:A:219:THR:HG23	2.22	0.40
1:A:264:ILE:HA	1:A:265:PRO:HD2	1.95	0.40
1:A:601:MET:HE2	7:A:4159:HOH:O	2.22	0.40
1:A:97:ARG:NH1	7:A:4078:HOH:O	2.54	0.40
1:A:656:THR:HG23	1:A:658:ASN:H	1.86	0.40

There are no symmetry-related clashes.

5.3 Torsion angles ⓘ

5.3.1 Protein backbone ⓘ

In the following table, the Percentiles column shows the percent Ramachandran outliers of the chain as a percentile score with respect to all X-ray entries followed by that with respect to entries of similar resolution.

The Analysed column shows the number of residues for which the backbone conformation was analysed, and the total number of residues.

Mol	Chain	Analysed	Favoured	Allowed	Outliers	Percentiles
1	A	579/590 (98%)	540 (93%)	37 (6%)	2 (0%)	46 79

All (2) Ramachandran outliers are listed below:

Mol	Chain	Res	Type
1	A	594	GLU
1	A	665	ASP

5.3.2 Protein sidechains ⓘ

In the following table, the Percentiles column shows the percent sidechain outliers of the chain as a percentile score with respect to all X-ray entries followed by that with respect to entries of similar resolution.

The Analysed column shows the number of residues for which the sidechain conformation was analysed, and the total number of residues.

Mol	Chain	Analysed	Rotameric	Outliers	Percentiles
1	A	471/486 (97%)	453 (96%)	18 (4%)	40 74

All (18) residues with a non-rotameric sidechain are listed below:

Mol	Chain	Res	Type
1	A	97	ARG
1	A	137	ARG
1	A	184	LEU
1	A	198	ARG
1	A	208	GLU
1	A	233	ARG
1	A	266	ASN
1	A	332	LEU
1	A	506	SER
1	A	534	ASP
1	A	536	ASP
1	A	616	THR
1	A	620	ASP
1	A	623	GLU
1	A	626	GLN
1	A	639	VAL
1	A	644	GLN
1	A	663	GLU

Some sidechains can be flipped to improve hydrogen bonding and reduce clashes. All (15) such sidechains are listed below:

Mol	Chain	Res	Type
1	A	138	ASN
1	A	143	HIS
1	A	145	GLN
1	A	174	ASN
1	A	261	GLN
1	A	266	ASN
1	A	291	GLN
1	A	312	ASN
1	A	363	HIS
1	A	488	HIS
1	A	527	ASN
1	A	566	GLN
1	A	573	GLN
1	A	626	GLN
1	A	644	GLN

5.3.3 RNA ⓘ

There are no RNA molecules in this entry.

5.4 Non-standard residues in protein, DNA, RNA chains ⓘ

1 non-standard protein/DNA/RNA residue is modelled in this entry.

In the following table, the Counts columns list the number of bonds (or angles) for which Mogul statistics could be retrieved, the number of bonds (or angles) that are observed in the model and the number of bonds (or angles) that are defined in the chemical component dictionary. The Link column lists molecule types, if any, to which the group is linked. The Z score for a bond length (or angle) is the number of standard deviations the observed value is removed from the expected value. A bond length (or angle) with $|Z| > 2$ is considered an outlier worth inspection. RMSZ is the root-mean-square of all Z scores of the bond lengths (or angles).

Mol	Type	Chain	Res	Link	Bond lengths			Bond angles		
					Counts	RMSZ	$\# Z > 2$	Counts	RMSZ	$\# Z > 2$
1	CSD	A	340	1	3,7,8	0.61	0	3,8,10	4.60	1 (33%)

In the following table, the Chirals column lists the number of chiral outliers, the number of chiral centers analysed, the number of these observed in the model and the number defined in the chemical component dictionary. Similar counts are reported in the Torsion and Rings columns. '-' means no outliers of that kind were identified.

Mol	Type	Chain	Res	Link	Chirals	Torsions	Rings
1	CSD	A	340	1	-	0/2/6/8	0/0/0/0

There are no bond length outliers.

All (1) bond angle outliers are listed below:

Mol	Chain	Res	Type	Atoms	Z	Observed(°)	Ideal(°)
1	A	340	CSD	OD1-SG-CB	7.67	118.19	105.40

There are no chirality outliers.

There are no torsion outliers.

There are no ring outliers.

No monomer is involved in short contacts.

5.5 Carbohydrates [i](#)

There are no carbohydrates in this entry.

5.6 Ligand geometry [i](#)

Of 6 ligands modelled in this entry, 1 is monoatomic - leaving 5 for Mogul analysis.

In the following table, the Counts columns list the number of bonds (or angles) for which Mogul statistics could be retrieved, the number of bonds (or angles) that are observed in the model and the number of bonds (or angles) that are defined in the chemical component dictionary. The Link column lists molecule types, if any, to which the group is linked. The Z score for a bond length (or angle) is the number of standard deviations the observed value is removed from the expected value. A bond length (or angle) with $|Z| > 2$ is considered an outlier worth inspection. RMSZ is the root-mean-square of all Z scores of the bond lengths (or angles).

Mol	Type	Chain	Res	Link	Bond lengths			Bond angles		
					Counts	RMSZ	$\# Z > 2$	Counts	RMSZ	$\# Z > 2$
3	1IQ	A	694	-	20,25,25	2.93	7 (35%)	24,38,38	4.96	6 (25%)
3	1IQ	A	695	-	20,25,25	5.21	13 (65%)	24,38,38	2.78	9 (37%)
4	NHE	A	696	-	12,13,13	3.58	5 (41%)	15,17,17	3.01	6 (40%)
5	FAD	A	701	-	48,58,58	2.72	20 (41%)	54,89,89	2.21	11 (20%)
6	TPP	A	702	2	20,27,27	3.36	12 (60%)	31,40,40	2.25	9 (29%)

In the following table, the Chirals column lists the number of chiral outliers, the number of chiral centers analysed, the number of these observed in the model and the number defined in the chemical

component dictionary. Similar counts are reported in the Torsion and Rings columns. '-' means no outliers of that kind were identified.

Mol	Type	Chain	Res	Link	Chirals	Torsions	Rings
3	IIQ	A	694	-	-	0/10/29/29	0/3/3/3
3	IIQ	A	695	-	-	0/10/29/29	0/3/3/3
4	NHE	A	696	-	-	0/7/15/15	0/1/1/1
5	FAD	A	701	-	-	0/30/50/50	0/6/6/6
6	TPP	A	702	2	-	0/16/17/17	0/2/2/2

All (57) bond length outliers are listed below:

Mol	Chain	Res	Type	Atoms	Z	Observed(Å)	Ideal(Å)
5	A	701	FAD	C5'-C4'	-3.95	1.45	1.51
3	A	694	IIQ	C4-N3	-3.10	1.44	1.47
5	A	701	FAD	P-O2P	-3.09	1.41	1.54
6	A	702	TPP	PA-O2A	-2.93	1.42	1.54
6	A	702	TPP	PB-O2B	-2.80	1.44	1.54
5	A	701	FAD	C8A-N7A	-2.61	1.29	1.34
5	A	701	FAD	PA-O2A	-2.52	1.44	1.54
5	A	701	FAD	O2B-C2B	-2.49	1.37	1.43
4	A	696	NHE	C5'-C6'	-2.14	1.47	1.53
6	A	702	TPP	PB-O3B	-2.06	1.47	1.54
3	A	695	IIQ	C4-N3	2.09	1.49	1.47
6	A	702	TPP	C7'-N3	2.23	1.52	1.48
3	A	695	IIQ	C6'-N1'	2.30	1.41	1.37
5	A	701	FAD	C8-C7	2.51	1.47	1.41
5	A	701	FAD	C9A-C5X	2.54	1.47	1.42
6	A	702	TPP	C4-N3	2.55	1.41	1.39
6	A	702	TPP	CM4-C4	2.56	1.55	1.49
5	A	701	FAD	C4X-C10	2.68	1.46	1.41
3	A	695	IIQ	CA'-C5'	2.68	1.48	1.41
5	A	701	FAD	C4X-N5	2.74	1.37	1.33
4	A	696	NHE	C6'-C1'	2.79	1.59	1.51
5	A	701	FAD	C9A-N10	2.82	1.42	1.38
5	A	701	FAD	C3B-C4B	2.93	1.60	1.53
3	A	694	IIQ	C6'-N1'	2.98	1.42	1.37
3	A	694	IIQ	C4'-C3'	3.08	1.42	1.37
5	A	701	FAD	C4-C4X	3.08	1.47	1.41
3	A	695	IIQ	C9'-C8'	3.11	1.46	1.38
5	A	701	FAD	C1'-N10	3.68	1.52	1.48
6	A	702	TPP	O7-C7	3.68	1.60	1.44
3	A	694	IIQ	C9'-CA'	3.72	1.45	1.36
6	A	702	TPP	C5'-C4'	3.83	1.52	1.42
5	A	701	FAD	C5A-C4A	3.90	1.49	1.40

Continued on next page...

Continued from previous page...

Mol	Chain	Res	Type	Atoms	Z	Observed(Å)	Ideal(Å)
3	A	695	1IQ	C8'-C7'	3.96	1.45	1.36
5	A	701	FAD	O4'-C4'	4.10	1.52	1.43
5	A	701	FAD	O3'-C3'	4.27	1.53	1.43
3	A	695	1IQ	C9'-CA'	4.45	1.46	1.36
3	A	695	1IQ	C7-C4	4.49	1.57	1.53
3	A	695	1IQ	C5'-C6'	4.52	1.48	1.42
5	A	701	FAD	C2A-N3A	4.54	1.40	1.32
5	A	701	FAD	C4-N3	4.87	1.42	1.33
6	A	702	TPP	C2'-N1'	5.24	1.43	1.34
6	A	702	TPP	C6'-C5'	5.41	1.49	1.37
6	A	702	TPP	C6'-N1'	5.54	1.46	1.34
3	A	694	1IQ	C4-C8	5.58	1.60	1.54
4	A	696	NHE	O2-S	5.77	1.63	1.45
4	A	696	NHE	O1-S	6.19	1.64	1.45
5	A	701	FAD	C2A-N1A	6.25	1.45	1.33
3	A	694	1IQ	C2'-N1'	6.31	1.40	1.32
3	A	694	1IQ	C5'-C6'	6.62	1.51	1.42
3	A	695	1IQ	C4'-C3'	7.04	1.48	1.37
6	A	702	TPP	C4'-N3'	7.22	1.46	1.35
4	A	696	NHE	O3-S	7.55	1.65	1.46
5	A	701	FAD	C4A-N3A	8.39	1.48	1.35
3	A	695	1IQ	C3'-C2'	9.47	1.53	1.41
3	A	695	1IQ	C2'-N1'	9.50	1.44	1.32
3	A	695	1IQ	C4-C8	9.94	1.64	1.54
3	A	695	1IQ	C2'-C2	9.98	1.59	1.48

All (41) bond angle outliers are listed below:

Mol	Chain	Res	Type	Atoms	Z	Observed(°)	Ideal(°)
3	A	694	1IQ	C7-C4-C8	-23.13	100.58	113.03
5	A	701	FAD	N3A-C2A-N1A	-6.65	123.80	128.89
3	A	695	1IQ	C3'-C2'-N1'	-5.85	116.53	123.21
3	A	695	1IQ	C8-C4-N3	-5.38	104.49	110.86
5	A	701	FAD	C4X-C4-N3	-5.29	116.35	123.59
4	A	696	NHE	C1-C2-S	-5.18	99.76	113.73
6	A	702	TPP	N1'-C2'-N3'	-3.62	118.91	125.60
5	A	701	FAD	C4-C4X-C10	-3.39	117.77	119.94
5	A	701	FAD	C4X-C10-N10	-3.34	118.55	120.52
4	A	696	NHE	C3'-C2'-C1'	-3.17	106.24	111.13
3	A	694	1IQ	C2'-C2-N3	-3.06	119.63	125.01
3	A	694	1IQ	C8-C4-N3	-2.47	107.93	110.86
6	A	702	TPP	C5'-C6'-N1'	-2.40	119.69	123.86

Continued on next page...

Continued from previous page...

Mol	Chain	Res	Type	Atoms	Z	Observed(°)	Ideal(°)
3	A	694	1IQ	C3'-C2'-N1'	-2.30	120.58	123.21
4	A	696	NHE	O3-S-O1	-2.25	106.36	111.61
4	A	696	NHE	C6'-C1'-C2'	-2.16	107.14	110.82
5	A	701	FAD	O2'-C2'-C3'	-2.07	103.81	109.02
3	A	695	1IQ	C7-C4-N3	-2.06	107.47	109.98
5	A	701	FAD	O3'-C3'-C4'	-2.01	103.69	108.75
3	A	695	1IQ	C4'-C3'-C2'	2.02	118.72	116.62
4	A	696	NHE	C2-C1-N	2.03	117.31	111.32
5	A	701	FAD	C5B-C4B-C3B	2.06	123.36	115.21
6	A	702	TPP	O2B-PB-O1B	2.13	117.43	110.58
3	A	694	1IQ	C2'-N1'-C6'	2.21	121.40	117.64
6	A	702	TPP	C2'-N3'-C4'	2.26	122.69	118.19
5	A	701	FAD	C1'-C2'-C3'	2.40	116.69	109.82
5	A	701	FAD	O2B-C2B-C3B	2.77	120.83	111.83
3	A	694	1IQ	C4'-C3'-C2'	2.88	119.62	116.62
6	A	702	TPP	O3A-PA-O7	3.30	111.69	102.94
3	A	695	1IQ	C2'-C2-N3	3.49	131.16	125.01
3	A	695	1IQ	C2'-N1'-C6'	3.57	123.72	117.64
6	A	702	TPP	PA-O7-C7	3.60	142.05	121.50
6	A	702	TPP	C6'-N1'-C2'	4.19	123.09	115.77
3	A	695	1IQ	C7-C4-C8	4.61	115.51	113.03
3	A	695	1IQ	C10-C8-C4	5.10	118.04	112.18
3	A	695	1IQ	C2-C2'-N1'	5.31	120.99	111.84
6	A	702	TPP	CM2-C2'-N1'	5.75	123.93	117.03
6	A	702	TPP	O7-C7-C6	6.09	134.78	109.30
5	A	701	FAD	C1B-N9A-C4A	6.48	136.72	126.94
5	A	701	FAD	C4-N3-C2	7.73	121.93	115.25
4	A	696	NHE	O1-S-C2	8.69	114.32	106.91

There are no chirality outliers.

There are no torsion outliers.

There are no ring outliers.

5 monomers are involved in 7 short contacts:

Mol	Chain	Res	Type	Clashes	Symm-Clashes
3	A	694	1IQ	1	0
3	A	695	1IQ	1	0
4	A	696	NHE	2	0
5	A	701	FAD	1	0
6	A	702	TPP	2	0

5.7 Other polymers

There are no such residues in this entry.

5.8 Polymer linkage issues

There are no chain breaks in this entry.

6 Fit of model and data [i](#)

6.1 Protein, DNA and RNA chains [i](#)

In the following table, the column labelled ‘#RSRZ> 2’ contains the number (and percentage) of RSRZ outliers, followed by percent RSRZ outliers for the chain as percentile scores relative to all X-ray entries and entries of similar resolution. The OWAB column contains the minimum, median, 95th percentile and maximum values of the occupancy-weighted average B-factor per residue. The column labelled ‘Q< 0.9’ lists the number of (and percentage) of residues with an average occupancy less than 0.9.

Mol	Chain	Analysed	<RSRZ>	#RSRZ>2	OWAB(Å ²)	Q<0.9
1	A	581/590 (98%)	-0.14	8 (1%) 78 69	31, 59, 111, 160	0

All (8) RSRZ outliers are listed below:

Mol	Chain	Res	Type	RSRZ
1	A	86	THR	3.1
1	A	667	ARG	3.1
1	A	408	HIS	2.9
1	A	656	THR	2.9
1	A	433	LEU	2.4
1	A	390	LYS	2.2
1	A	584	ALA	2.2
1	A	666	GLY	2.0

6.2 Non-standard residues in protein, DNA, RNA chains [i](#)

In the following table, the Atoms column lists the number of modelled atoms in the group and the number defined in the chemical component dictionary. LLDF column lists the quality of electron density of the group with respect to its neighbouring residues in protein, DNA or RNA chains. The B-factors column lists the minimum, median, 95th percentile and maximum values of B factors of atoms in the group. The column labelled ‘Q< 0.9’ lists the number of atoms with occupancy less than 0.9.

Mol	Type	Chain	Res	Atoms	RSCC	RSR	LLDF	B-factors(Å ²)	Q<0.9
1	CSD	A	340	8/9	0.88	0.19	-	79,80,81,81	0

6.3 Carbohydrates [i](#)

There are no carbohydrates in this entry.

6.4 Ligands [i](#)

In the following table, the Atoms column lists the number of modelled atoms in the group and the number defined in the chemical component dictionary. LLDF column lists the quality of electron density of the group with respect to its neighbouring residues in protein, DNA or RNA chains. The B-factors column lists the minimum, median, 95th percentile and maximum values of B factors of atoms in the group. The column labelled 'Q< 0.9' lists the number of atoms with occupancy less than 0.9.

Mol	Type	Chain	Res	Atoms	RSCC	RSR	LLDF	B-factors(Å ²)	Q<0.9
3	IIQ	A	695	23/23	0.81	0.40	6.94	152,153,154,154	0
4	NHE	A	696	13/13	0.98	0.23	3.76	63,65,67,68	0
3	IIQ	A	694	23/23	0.92	0.25	2.47	107,110,112,113	0
6	TPP	A	702	26/26	0.97	0.20	1.19	74,88,90,90	2
5	FAD	A	701	53/53	0.98	0.18	0.05	37,47,50,52	0
2	MG	A	699	1/1	0.95	0.09	-2.74	58,58,58,58	0

6.5 Other polymers [i](#)

There are no such residues in this entry.