



# Full wwPDB X-ray Structure Validation Report ⓘ

Jan 31, 2016 – 11:57 PM GMT

PDB ID : 1Z9G  
Title : Crystal Structure Analysis of Thermolysin Complexed with the Inhibitor (R)-retro-thiorphan  
Authors : Roderick, S.L.; Fournie-Zaluski, M.C.; Roques, B.P.; Matthews, B.W.  
Deposited on : 2005-04-01  
Resolution : 1.70 Å(reported)

This is a Full wwPDB X-ray Structure Validation Report for a publicly released PDB entry.  
We welcome your comments at [validation@mail.wwpdb.org](mailto:validation@mail.wwpdb.org)  
A user guide is available at  
<http://wwpdb.org/validation/2016/XrayValidationReportHelp>  
with specific help available everywhere you see the ⓘ symbol.

---

The following versions of software and data (see [references ⓘ](#)) were used in the production of this report:

MolProbity : 4.02b-467  
Mogul : 1.7 (RC4), CSD as536be (2015)  
Xtriage (Phenix) : 1.9-1692  
EDS : rb-20026688  
Percentile statistics : 20151230.v01 (using entries in the PDB archive December 30th 2015)  
Refmac : 5.8.0135  
CCP4 : 6.5.0  
Ideal geometry (proteins) : Engh & Huber (2001)  
Ideal geometry (DNA, RNA) : Parkinson et al. (1996)  
Validation Pipeline (wwPDB-VP) : trunk26865

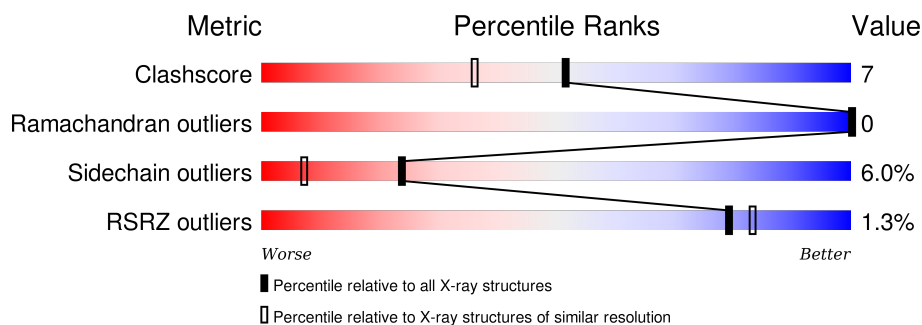
# 1 Overall quality at a glance

The following experimental techniques were used to determine the structure:

*X-RAY DIFFRACTION*

The reported resolution of this entry is 1.70 Å.

Percentile scores (ranging between 0-100) for global validation metrics of the entry are shown in the following graphic. The table shows the number of entries on which the scores are based.



Metric	Whole archive (#Entries)	Similar resolution (#Entries, resolution range(Å))
Clashscore	102246	3585 (1.70-1.70)
Ramachandran outliers	100387	3527 (1.70-1.70)
Sidechain outliers	100360	3527 (1.70-1.70)
RSRZ outliers	91569	3200 (1.70-1.70)

The table below summarises the geometric issues observed across the polymeric chains and their fit to the electron density. The red, orange, yellow and green segments on the lower bar indicate the fraction of residues that contain outliers for  $\geq 3$ , 2, 1 and 0 types of geometric quality criteria. A grey segment represents the fraction of residues that are not modelled. The numeric value for each fraction is indicated below the corresponding segment, with a dot representing fractions  $\leq 5\%$ . The upper red bar (where present) indicates the fraction of residues that have poor fit to the electron density. The numeric value is given above the bar.

Mol	Chain	Length	Quality of chain
1	E	316	

## 2 Entry composition

There are 5 unique types of molecules in this entry. The entry contains 2615 atoms, of which 0 are hydrogens and 0 are deuteriums.

In the tables below, the ZeroOcc column contains the number of atoms modelled with zero occupancy, the AltConf column contains the number of residues with at least one atom in alternate conformation and the Trace column contains the number of residues modelled with at most 2 atoms.

- Molecule 1 is a protein called Thermolysin.

Mol	Chain	Residues	Atoms					ZeroOcc	AltConf	Trace
1	E	316	Total	C	N	O	S	0	0	0
			2432	1528	408	494	2			

There are 3 discrepancies between the modelled and reference sequences:

Chain	Residue	Modelled	Actual	Comment	Reference
E	37	ASP	ASN	CONFLICT	UNP P00800
E	119	GLU	GLN	CONFLICT	UNP P00800
E	177	GLU	LYS	SEE REMARK 999	UNP P00800

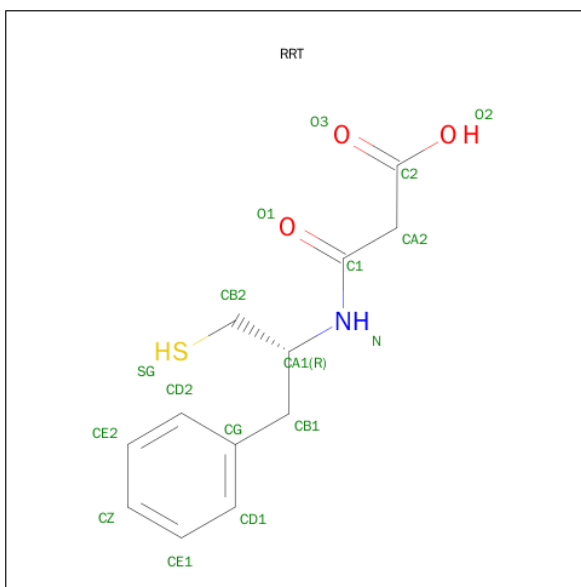
- Molecule 2 is CALCIUM ION (three-letter code: CA) (formula: Ca).

Mol	Chain	Residues	Atoms		ZeroOcc	AltConf
2	E	4	Total	Ca	0	0
			4	4		

- Molecule 3 is ZINC ION (three-letter code: ZN) (formula: Zn).

Mol	Chain	Residues	Atoms		ZeroOcc	AltConf
3	E	1	Total	Zn	0	0
			1	1		

- Molecule 4 is (R)-RETRO-THIORPHAN (three-letter code: RRT) (formula: C<sub>12</sub>H<sub>15</sub>NO<sub>3</sub>S).



Mol	Chain	Residues	Atoms					ZeroOcc	AltConf
4	E	1	Total	C	N	O	S	0	0
			17	12	1	3	1		

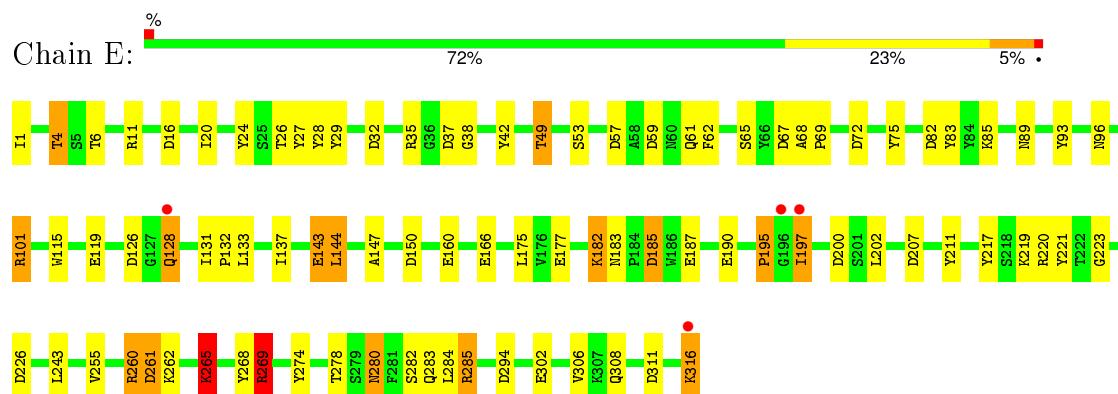
- Molecule 5 is water.

Mol	Chain	Residues	Atoms	ZeroOcc	AltConf
5	E	161	Total O 161 161	0	0

### 3 Residue-property plots

These plots are drawn for all protein, RNA and DNA chains in the entry. The first graphic for a chain summarises the proportions of errors displayed in the second graphic. The second graphic shows the sequence view annotated by issues in geometry and electron density. Residues are color-coded according to the number of geometric quality criteria for which they contain at least one outlier: green = 0, yellow = 1, orange = 2 and red = 3 or more. A red dot above a residue indicates a poor fit to the electron density ( $RSRZ > 2$ ). Stretches of 2 or more consecutive residues without any outlier are shown as a green connector. Residues present in the sample, but not in the model, are shown in grey.

#### • Molecule 1: Thermolysin



## 4 Data and refinement statistics

Property	Value	Source
Space group	P 61 2 2	Depositor
Cell constants a, b, c, $\alpha$ , $\beta$ , $\gamma$	94.00 Å 94.00 Å 132.00 Å 90.00° 90.00° 120.00°	Depositor
Resolution (Å)	10.00 – 1.70 29.97 – 1.70	Depositor EDS
% Data completeness (in resolution range)	71.0 (10.00-1.70) 72.0 (29.97-1.70)	Depositor EDS
$R_{merge}$	0.06	Depositor
$R_{sym}$	0.03	Depositor
$\langle I/\sigma(I) \rangle$ <sup>1</sup>	3.16 (at 1.71 Å)	Xtriage
Refinement program	TNT V. 3-D	Depositor
R, $R_{free}$	0.187 , (Not available) 0.169 , (Not available)	Depositor DCC
$R_{free}$ test set	No test flags present.	DCC
Wilson B-factor (Å <sup>2</sup> )	15.9	Xtriage
Anisotropy	0.625	Xtriage
Bulk solvent $k_{sol}$ (e/Å <sup>3</sup> ), $B_{sol}$ (Å <sup>2</sup> )	0.36 , 72.8	EDS
Estimated twinning fraction	No twinning to report.	Xtriage
L-test for twinning <sup>2</sup>	$\langle  L  \rangle = 0.50$ , $\langle L^2 \rangle = 0.33$	Xtriage
Outliers	0 of 27574 reflections	Xtriage
$F_o, F_c$ correlation	0.96	EDS
Total number of atoms	2615	wwPDB-VP
Average B, all atoms (Å <sup>2</sup> )	16.0	wwPDB-VP

Xtriage's analysis on translational NCS is as follows: *The largest off-origin peak in the Patterson function is 4.17% of the height of the origin peak. No significant pseudotranslation is detected.*

<sup>1</sup>Intensities estimated from amplitudes.

<sup>2</sup>Theoretical values of  $\langle |L| \rangle$ ,  $\langle L^2 \rangle$  for acentric reflections are 0.5, 0.375 respectively for untwinned datasets, and 0.333, 0.2 for perfectly twinned datasets.

## 5 Model quality

### 5.1 Standard geometry

Bond lengths and bond angles in the following residue types are not validated in this section: ZN, RRT, CA

The Z score for a bond length (or angle) is the number of standard deviations the observed value is removed from the expected value. A bond length (or angle) with  $|Z| > 5$  is considered an outlier worth inspection. RMSZ is the root-mean-square of all Z scores of the bond lengths (or angles).

Mol	Chain	Bond lengths		Bond angles	
		RMSZ	$\# Z  > 5$	RMSZ	$\# Z  > 5$
1	E	1.30	9/2491 (0.4%)	1.92	73/3391 (2.2%)

Chiral center outliers are detected by calculating the chiral volume of a chiral center and verifying if the center is modelled as a planar moiety or with the opposite hand. A planarity outlier is detected by checking planarity of atoms in a peptide group, atoms in a mainchain group or atoms of a sidechain that are expected to be planar.

Mol	Chain	#Chirality outliers	#Planarity outliers
1	E	5	0

All (9) bond length outliers are listed below:

Mol	Chain	Res	Type	Atoms	Z	Observed(Å)	Ideal(Å)
1	E	119	GLU	CD-OE2	8.39	1.34	1.25
1	E	187	GLU	CD-OE2	7.31	1.33	1.25
1	E	166	GLU	CD-OE2	7.30	1.33	1.25
1	E	160	GLU	CD-OE1	-6.87	1.18	1.25
1	E	166	GLU	CD-OE1	-6.39	1.18	1.25
1	E	53	SER	CB-OG	-5.97	1.34	1.42
1	E	190	GLU	CD-OE2	5.97	1.32	1.25
1	E	119	GLU	CD-OE1	-5.84	1.19	1.25
1	E	177	GLU	CD-OE2	5.40	1.31	1.25

All (73) bond angle outliers are listed below:

Mol	Chain	Res	Type	Atoms	Z	Observed(°)	Ideal(°)
1	E	269	ARG	NE-CZ-NH1	-19.61	110.49	120.30
1	E	220	ARG	NE-CZ-NH2	-13.97	113.31	120.30
1	E	285	ARG	NE-CZ-NH1	12.83	126.71	120.30
1	E	269	ARG	NE-CZ-NH2	12.68	126.64	120.30

*Continued on next page...*

*Continued from previous page...*

Mol	Chain	Res	Type	Atoms	Z	Observed(°)	Ideal(°)
1	E	220	ARG	NE-CZ-NH1	12.26	126.43	120.30
1	E	93	TYR	CB-CG-CD2	-11.68	113.99	121.00
1	E	269	ARG	CD-NE-CZ	-11.29	107.79	123.60
1	E	57	ASP	CB-CG-OD1	10.71	127.94	118.30
1	E	274	TYR	CB-CG-CD1	-10.40	114.76	121.00
1	E	197	ILE	CA-CB-CG1	10.03	130.06	111.00
1	E	260	ARG	NE-CZ-NH1	10.02	125.31	120.30
1	E	101	ARG	CG-CD-NE	-10.00	90.81	111.80
1	E	311	ASP	CB-CG-OD2	-9.92	109.38	118.30
1	E	16	ASP	CB-CG-OD2	-9.48	109.77	118.30
1	E	207	ASP	CB-CG-OD2	-9.10	110.11	118.30
1	E	274	TYR	CB-CG-CD2	8.91	126.35	121.00
1	E	211	TYR	CB-CG-CD2	-8.69	115.79	121.00
1	E	311	ASP	CB-CG-OD1	8.65	126.08	118.30
1	E	226	ASP	CB-CG-OD2	-8.41	110.73	118.30
1	E	226	ASP	CB-CG-OD1	8.24	125.72	118.30
1	E	260	ARG	NE-CZ-NH2	-8.15	116.23	120.30
1	E	285	ARG	NE-CZ-NH2	-8.11	116.25	120.30
1	E	200	ASP	CB-CG-OD2	-7.99	111.11	118.30
1	E	61	GLN	CA-CB-CG	-7.90	96.02	113.40
1	E	101	ARG	NE-CZ-NH2	-7.82	116.39	120.30
1	E	217	TYR	CD1-CE1-CZ	-7.53	113.03	119.80
1	E	211	TYR	CB-CG-CD1	7.29	125.37	121.00
1	E	143	GLU	CG-CD-OE1	7.22	132.74	118.30
1	E	220	ARG	CD-NE-CZ	7.18	133.66	123.60
1	E	35	ARG	NE-CZ-NH2	7.15	123.88	120.30
1	E	16	ASP	CB-CG-OD1	7.12	124.71	118.30
1	E	217	TYR	CG-CD2-CE2	-7.05	115.66	121.30
1	E	59	ASP	CB-CG-OD1	7.00	124.60	118.30
1	E	28	TYR	CB-CG-CD2	-6.98	116.81	121.00
1	E	217	TYR	CG-CD1-CE1	6.89	126.82	121.30
1	E	261	ASP	CB-CG-OD2	-6.84	112.15	118.30
1	E	200	ASP	CB-CG-OD1	6.83	124.44	118.30
1	E	26	THR	CA-CB-CG2	6.81	121.93	112.40
1	E	67	ASP	CB-CG-OD1	6.74	124.37	118.30
1	E	101	ARG	CD-NE-CZ	6.60	132.84	123.60
1	E	185	ASP	CB-CG-OD1	6.57	124.21	118.30
1	E	207	ASP	CB-CG-OD1	6.50	124.15	118.30
1	E	6	THR	OG1-CB-CG2	-6.29	95.53	110.00
1	E	195	PRO	C-N-CA	-6.24	109.19	122.30
1	E	278	THR	OG1-CB-CG2	6.21	124.28	110.00
1	E	202	LEU	CB-CG-CD1	-6.04	100.74	111.00

*Continued on next page...*



*Continued from previous page...*

Mol	Chain	Res	Type	Atoms	Z	Observed(°)	Ideal(°)
1	E	49	THR	N-CA-CB	-5.90	99.08	110.30
1	E	62	PHE	CB-CG-CD2	5.77	124.84	120.80
1	E	93	TYR	CB-CG-CD1	5.73	124.44	121.00
1	E	75	TYR	CB-CG-CD1	-5.73	117.56	121.00
1	E	72	ASP	CB-CG-OD1	5.64	123.37	118.30
1	E	57	ASP	CB-CG-OD2	-5.59	113.27	118.30
1	E	143	GLU	CG-CD-OE2	-5.58	107.14	118.30
1	E	53	SER	CB-CA-C	-5.47	99.70	110.10
1	E	268	TYR	CB-CG-CD2	-5.47	117.72	121.00
1	E	217	TYR	CZ-CE2-CD2	5.43	124.69	119.80
1	E	284	LEU	CB-CG-CD2	-5.40	101.82	111.00
1	E	306	VAL	CA-CB-CG1	5.39	118.98	110.90
1	E	243	LEU	CB-CG-CD1	-5.38	101.85	111.00
1	E	65	SER	N-CA-CB	5.36	118.54	110.50
1	E	101	ARG	CB-CA-C	-5.33	99.73	110.40
1	E	27	TYR	CB-CG-CD1	-5.32	117.81	121.00
1	E	37	ASP	CB-CG-OD2	-5.30	113.53	118.30
1	E	4	THR	OG1-CB-CG2	-5.27	97.88	110.00
1	E	126	ASP	CB-CA-C	-5.24	99.93	110.40
1	E	265	LYS	CB-CA-C	-5.21	99.97	110.40
1	E	83	TYR	CB-CG-CD1	5.20	124.12	121.00
1	E	282	SER	CB-CA-C	5.14	119.86	110.10
1	E	82	ASP	CB-CG-OD2	-5.14	113.68	118.30
1	E	11	ARG	NE-CZ-NH1	5.08	122.84	120.30
1	E	29	TYR	CB-CG-CD1	-5.07	117.96	121.00
1	E	260	ARG	N-CA-C	5.04	124.61	111.00
1	E	220	ARG	CG-CD-NE	-5.01	101.28	111.80

All (5) chirality outliers are listed below:

Mol	Chain	Res	Type	Atom
1	E	26	THR	CB
1	E	224	THR	CB
1	E	260	ARG	CA
1	E	278	THR	CB
1	E	316	LYS	CA

There are no planarity outliers.

## 5.2 Too-close contacts ⓘ

In the following table, the Non-H and H(model) columns list the number of non-hydrogen atoms and hydrogen atoms in the chain respectively. The H(added) column lists the number of hydrogen atoms added and optimized by MolProbity. The Clashes column lists the number of clashes within the asymmetric unit, whereas Symm-Clashes lists symmetry related clashes.

Mol	Chain	Non-H	H(model)	H(added)	Clashes	Symm-Clashes
1	E	2432	0	2267	32	0
2	E	4	0	0	0	0
3	E	1	0	0	0	0
4	E	17	0	13	1	0
5	E	161	0	0	2	2
All	All	2615	0	2280	32	2

The all-atom clashscore is defined as the number of clashes found per 1000 atoms (including hydrogen atoms). The all-atom clashscore for this structure is 7.

All (32) close contacts within the same asymmetric unit are listed below, sorted by their clash magnitude.

Atom-1	Atom-2	Interatomic distance (Å)	Clash overlap (Å)
1:E:285:ARG:HD3	1:E:316:LYS:HD3	1.48	0.92
1:E:269:ARG:NH1	1:E:294:ASP:OD2	2.14	0.81
1:E:285:ARG:HD3	1:E:316:LYS:CD	2.10	0.81
1:E:143:GLU:OE2	4:E:1006:RRT:HB12	1.82	0.79
1:E:137:ILE:H	1:E:182:LYS:HZ2	1.34	0.76
1:E:280:ASN:ND2	1:E:283:GLN:H	1.91	0.69
1:E:4:THR:HG22	1:E:24:TYR:HB3	1.79	0.64
1:E:42:TYR:HE2	1:E:101:ARG:HG2	1.64	0.62
1:E:219:LYS:HE2	5:E:391:HOH:O	2.01	0.59
1:E:137:ILE:H	1:E:182:LYS:NZ	2.03	0.55
1:E:285:ARG:CD	1:E:316:LYS:HD3	2.30	0.54
1:E:280:ASN:C	1:E:280:ASN:HD22	2.12	0.53
1:E:133:LEU:N	1:E:133:LEU:HD12	2.25	0.52
1:E:260:ARG:HG3	1:E:260:ARG:HH11	1.76	0.51
1:E:68:ALA:HB3	1:E:69:PRO:HD3	1.91	0.51
1:E:280:ASN:HD22	1:E:283:GLN:H	1.58	0.51
1:E:128:GLN:O	1:E:195:PRO:HD2	2.11	0.50
1:E:115:TRP:NE1	1:E:150:ASP:OD2	2.45	0.47
1:E:262:LYS:NZ	1:E:302:GLU:OE2	2.29	0.47
1:E:285:ARG:HD3	1:E:316:LYS:HD2	1.96	0.47
1:E:269:ARG:HH11	1:E:269:ARG:HD3	1.09	0.47
1:E:133:LEU:H	1:E:133:LEU:HD12	1.80	0.46

*Continued on next page...*

*Continued from previous page...*

Atom-1	Atom-2	Interatomic distance (Å)	Clash overlap (Å)
1:E:137:ILE:HG22	1:E:182:LYS:HZ2	1.80	0.46
1:E:265:LYS:HE2	5:E:446:HOH:O	2.16	0.46
1:E:144:LEU:O	1:E:147:ALA:HB3	2.16	0.45
1:E:131:ILE:HB	1:E:132:PRO:CD	2.47	0.45
1:E:221:TYR:CZ	1:E:223:GLY:HA3	2.52	0.44
1:E:32:ASP:O	1:E:38:GLY:HA2	2.18	0.44
1:E:85:LYS:O	1:E:89:ASN:HA	2.19	0.43
1:E:175:LEU:HD23	1:E:175:LEU:HA	1.88	0.42
1:E:255:VAL:HG22	1:E:308:GLN:HB3	2.02	0.42
1:E:42:TYR:CE2	1:E:101:ARG:HG2	2.52	0.40

All (2) symmetry-related close contacts are listed below. The label for Atom-2 includes the symmetry operator and encoded unit-cell translations to be applied.

Atom-1	Atom-2	Interatomic distance (Å)	Clash overlap (Å)
5:E:418:HOH:O	5:E:418:HOH:O[12_565]	1.40	0.80
5:E:485:HOH:O	5:E:485:HOH:O[7_555]	1.66	0.54

## 5.3 Torsion angles ⓘ

### 5.3.1 Protein backbone ⓘ

In the following table, the Percentiles column shows the percent Ramachandran outliers of the chain as a percentile score with respect to all X-ray entries followed by that with respect to entries of similar resolution.

The Analysed column shows the number of residues for which the backbone conformation was analysed, and the total number of residues.

Mol	Chain	Analysed	Favoured	Allowed	Outliers	Percentiles	
1	E	314/316 (99%)	299 (95%)	15 (5%)	0	100	100

There are no Ramachandran outliers to report.

### 5.3.2 Protein sidechains ⓘ

In the following table, the Percentiles column shows the percent sidechain outliers of the chain as a percentile score with respect to all X-ray entries followed by that with respect to entries of similar resolution.

The Analysed column shows the number of residues for which the sidechain conformation was analysed, and the total number of residues.

Mol	Chain	Analysed	Rotameric	Outliers	Percentiles
1	E	252/252 (100%)	237 (94%)	15 (6%)	24 7

All (15) residues with a non-rotameric sidechain are listed below:

Mol	Chain	Res	Type
1	E	1	ILE
1	E	20	ILE
1	E	49	THR
1	E	96	ASN
1	E	128	GLN
1	E	144	LEU
1	E	182	LYS
1	E	183	ASN
1	E	185	ASP
1	E	197	ILE
1	E	261	ASP
1	E	265	LYS
1	E	269	ARG
1	E	280	ASN
1	E	316	LYS

Some sidechains can be flipped to improve hydrogen bonding and reduce clashes. All (4) such sidechains are listed below:

Mol	Chain	Res	Type
1	E	31	GLN
1	E	33	ASN
1	E	97	ASN
1	E	280	ASN

### 5.3.3 RNA ⓘ

There are no RNA molecules in this entry.

## 5.4 Non-standard residues in protein, DNA, RNA chains ⓘ

There are no non-standard protein/DNA/RNA residues in this entry.

## 5.5 Carbohydrates

There are no carbohydrates in this entry.

## 5.6 Ligand geometry

Of 6 ligands modelled in this entry, 5 are monoatomic - leaving 1 for Mogul analysis.

In the following table, the Counts columns list the number of bonds (or angles) for which Mogul statistics could be retrieved, the number of bonds (or angles) that are observed in the model and the number of bonds (or angles) that are defined in the chemical component dictionary. The Link column lists molecule types, if any, to which the group is linked. The Z score for a bond length (or angle) is the number of standard deviations the observed value is removed from the expected value. A bond length (or angle) with  $|Z| > 2$  is considered an outlier worth inspection. RMSZ is the root-mean-square of all Z scores of the bond lengths (or angles).

Mol	Type	Chain	Res	Link	Bond lengths			Bond angles		
					Counts	RMSZ	$\# Z  > 2$	Counts	RMSZ	$\# Z  > 2$
4	RRT	E	1006	3	14,17,17	0.94	1 (7%)	16,21,21	2.10	5 (31%)

In the following table, the Chirals column lists the number of chiral outliers, the number of chiral centers analysed, the number of these observed in the model and the number defined in the chemical component dictionary. Similar counts are reported in the Torsion and Rings columns. '-' means no outliers of that kind were identified.

Mol	Type	Chain	Res	Link	Chirals	Torsions	Rings
4	RRT	E	1006	3	-	0/11/14/14	0/1/1/1

All (1) bond length outliers are listed below:

Mol	Chain	Res	Type	Atoms	Z	Observed(Å)	Ideal(Å)
4	E	1006	RRT	CA2-C1	2.41	1.57	1.51

All (5) bond angle outliers are listed below:

Mol	Chain	Res	Type	Atoms	Z	Observed(°)	Ideal(°)
4	E	1006	RRT	CA1-CB2-SG	-6.07	106.70	114.16
4	E	1006	RRT	CZ-CE1-CD1	-2.59	116.39	120.19
4	E	1006	RRT	CB1-CA1-N	-2.59	104.75	110.56
4	E	1006	RRT	CB2-CA1-CB1	-2.28	107.30	111.89
4	E	1006	RRT	CA1-N-C1	2.03	125.78	122.79

There are no chirality outliers.

There are no torsion outliers.

There are no ring outliers.

1 monomer is involved in 1 short contact:

Mol	Chain	Res	Type	Clashes	Symm-Clashes
4	E	1006	RRT	1	0

## 5.7 Other polymers [i](#)

There are no such residues in this entry.

## 5.8 Polymer linkage issues [i](#)

There are no chain breaks in this entry.

## 6 Fit of model and data [i](#)

### 6.1 Protein, DNA and RNA chains [i](#)

In the following table, the column labelled ‘#RSRZ> 2’ contains the number (and percentage) of RSRZ outliers, followed by percent RSRZ outliers for the chain as percentile scores relative to all X-ray entries and entries of similar resolution. The OWAB column contains the minimum, median, 95<sup>th</sup> percentile and maximum values of the occupancy-weighted average B-factor per residue. The column labelled ‘Q< 0.9’ lists the number of (and percentage) of residues with an average occupancy less than 0.9.

Mol	Chain	Analysed	<RSRZ>	#RSRZ>2	OWAB(Å <sup>2</sup> )	Q<0.9
1	E	316/316 (100%)	-0.35	4 (1%) 79 83	7, 14, 27, 36	0

All (4) RSRZ outliers are listed below:

Mol	Chain	Res	Type	RSRZ
1	E	197	ILE	3.8
1	E	128	GLN	3.4
1	E	196	GLY	2.6
1	E	316	LYS	2.3

### 6.2 Non-standard residues in protein, DNA, RNA chains [i](#)

There are no non-standard protein/DNA/RNA residues in this entry.

### 6.3 Carbohydrates [i](#)

There are no carbohydrates in this entry.

### 6.4 Ligands [i](#)

In the following table, the Atoms column lists the number of modelled atoms in the group and the number defined in the chemical component dictionary. LLDF column lists the quality of electron density of the group with respect to its neighbouring residues in protein, DNA or RNA chains. The B-factors column lists the minimum, median, 95<sup>th</sup> percentile and maximum values of B factors of atoms in the group. The column labelled ‘Q< 0.9’ lists the number of atoms with occupancy less than 0.9.

Mol	Type	Chain	Res	Atoms	RSCC	RSR	LLDF	B-factors(Å <sup>2</sup> )	Q<0.9
2	CA	E	1001	1/1	0.99	0.08	0.84	12,12,12,12	0

*Continued on next page...*

*Continued from previous page...*

Mol	Type	Chain	Res	Atoms	RSCC	RSR	LLDF	B-factors( $\text{\AA}^2$ )	Q<0.9
4	RRT	E	1006	17/17	0.96	0.08	0.04	19,23,31,42	0
2	CA	E	1002	1/1	1.00	0.05	-0.70	14,14,14,14	0
2	CA	E	1003	1/1	1.00	0.03	-1.75	11,11,11,11	0
2	CA	E	1004	1/1	0.99	0.03	-1.81	16,16,16,16	0
3	ZN	E	1005	1/1	1.00	0.05	-2.58	12,12,12,12	0

## 6.5 Other polymers [i](#)

There are no such residues in this entry.