



# Full wwPDB X-ray Structure Validation Report ⓘ

Feb 19, 2016 – 08:57 PM GMT

PDB ID : 4ZA9  
Title : Structure of A. niger fdcl in complex with a phenylpyruvate derived adduct to the prenylated flavin cofactor  
Authors : Payne, K.A.P.; Leys, D.  
Deposited on : 2015-04-13  
Resolution : 1.01 Å(reported)

This is a Full wwPDB X-ray Structure Validation Report for a publicly released PDB entry.  
We welcome your comments at [validation@mail.wwpdb.org](mailto:validation@mail.wwpdb.org)  
A user guide is available at  
<http://wwpdb.org/validation/2016/XrayValidationReportHelp>  
with specific help available everywhere you see the ⓘ symbol.

---

The following versions of software and data (see [references ⓘ](#)) were used in the production of this report:

MolProbity : 4.02b-467  
Mogul : 1.7.1 (RC1), CSD as537be (2016)  
Xtriage (Phenix) : 1.9-1692  
EDS : rb-20026982  
Percentile statistics : 20151230.v01 (using entries in the PDB archive December 30th 2015)  
Refmac : 5.8.0135  
CCP4 : 6.5.0  
Ideal geometry (proteins) : Engh & Huber (2001)  
Ideal geometry (DNA, RNA) : Parkinson et al. (1996)  
Validation Pipeline (wwPDB-VP) : rb-20026982

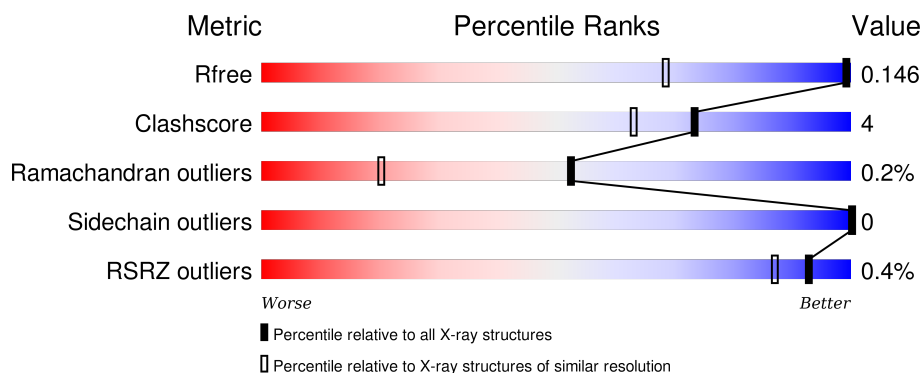
# 1 Overall quality at a glance ⓘ

The following experimental techniques were used to determine the structure:

## *X-RAY DIFFRACTION*

The reported resolution of this entry is 1.01 Å.

Percentile scores (ranging between 0-100) for global validation metrics of the entry are shown in the following graphic. The table shows the number of entries on which the scores are based.



Metric	Whole archive (#Entries)	Similar resolution (#Entries, resolution range(Å))
$R_{free}$	91344	1152 (1.10-0.94)
Clashscore	102246	1237 (1.10-0.94)
Ramachandran outliers	100387	1159 (1.10-0.94)
Sidechain outliers	100360	1158 (1.10-0.94)
RSRZ outliers	91569	1154 (1.10-0.94)

The table below summarises the geometric issues observed across the polymeric chains and their fit to the electron density. The red, orange, yellow and green segments on the lower bar indicate the fraction of residues that contain outliers for  $\geq 3$ , 2, 1 and 0 types of geometric quality criteria. A grey segment represents the fraction of residues that are not modelled. The numeric value for each fraction is indicated below the corresponding segment, with a dot representing fractions  $\leq 5\%$ . The upper red bar (where present) indicates the fraction of residues that have poor fit to the electron density. The numeric value is given above the bar.

Mol	Chain	Length	Quality of chain
1	A	508	

The following table lists non-polymeric compounds, carbohydrate monomers and non-standard residues in protein, DNA, RNA chains that are outliers for geometric or electron-density-fit criteria:

Mol	Type	Chain	Res	Chirality	Geometry	Clashes	Electron density
2	4MJ	A	601	-	-	-	X

## 2 Entry composition

There are 5 unique types of molecules in this entry. The entry contains 4554 atoms, of which 0 are hydrogens and 0 are deuteriums.

In the tables below, the ZeroOcc column contains the number of atoms modelled with zero occupancy, the AltConf column contains the number of residues with at least one atom in alternate conformation and the Trace column contains the number of residues modelled with at most 2 atoms.

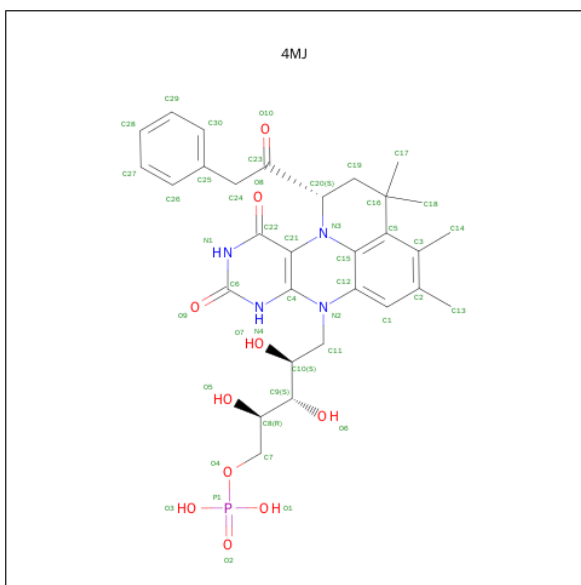
- Molecule 1 is a protein called fdc1.

Mol	Chain	Residues	Atoms					ZeroOcc	AltConf	Trace
			Total	C	N	O	S			
1	A	497	4041	2556	700	756	29	0	29	0

There are 8 discrepancies between the modelled and reference sequences:

Chain	Residue	Modelled	Actual	Comment	Reference
A	501	LEU	-	expression tag	UNP A2QHE5
A	502	GLU	-	expression tag	UNP A2QHE5
A	503	HIS	-	expression tag	UNP A2QHE5
A	504	HIS	-	expression tag	UNP A2QHE5
A	505	HIS	-	expression tag	UNP A2QHE5
A	506	HIS	-	expression tag	UNP A2QHE5
A	507	HIS	-	expression tag	UNP A2QHE5
A	508	HIS	-	expression tag	UNP A2QHE5

- Molecule 2 is 1-deoxy-5-O-phosphono-1-[(1S)-3,3,4,5-tetramethyl-9,11-dioxo-1-(phenylacetyl)-2,3,8,9,10,11-hexahydro-1H,7H-quinolino[1,8-fg]pteridin-7-yl]-D-ribitol (three-letter code: 4MJ) (formula: C<sub>30</sub>H<sub>37</sub>N<sub>4</sub>O<sub>10</sub>P).



Mol	Chain	Residues	Atoms					ZeroOcc	AltConf
2	A	1	Total	C	N	O	P	0	0
			45	30	4	10	1		

- Molecule 3 is MANGANESE (II) ION (three-letter code: MN) (formula: Mn).

Mol	Chain	Residues	Atoms		ZeroOcc	AltConf
3	A	1	Total	Mn	0	0
			1	1		

- Molecule 4 is POTASSIUM ION (three-letter code: K) (formula: K).

Mol	Chain	Residues	Atoms		ZeroOcc	AltConf
4	A	2	Total	K	0	0
			2	2		

- Molecule 5 is water.

Mol	Chain	Residues	Atoms		ZeroOcc	AltConf
5	A	465	Total	O	0	0
			465	465		

**i**

- Molecule 1: fdc1

## 4 Data and refinement statistics

Property	Value	Source
Space group	P 21 21 2	Depositor
Cell constants a, b, c, $\alpha$ , $\beta$ , $\gamma$	96.05Å 63.85Å 87.68Å 90.00° 90.00° 90.00°	Depositor
Resolution (Å)	63.85 – 1.01 53.17 – 1.01	Depositor EDS
% Data completeness (in resolution range)	100.0 (63.85-1.01) 99.0 (53.17-1.01)	Depositor EDS
$R_{merge}$	0.03	Depositor
$R_{sym}$	(Not available)	Depositor
$\langle I/\sigma(I) \rangle$ <sup>1</sup>	2.09 (at 1.01Å)	Xtriage
Refinement program	REFMAC 5.5.0102	Depositor
R, $R_{free}$	0.130 , 0.145 0.130 , 0.146	Depositor DCC
$R_{free}$ test set	13893 reflections (5.26%)	DCC
Wilson B-factor (Å <sup>2</sup> )	7.0	Xtriage
Anisotropy	1.533	Xtriage
Bulk solvent $k_{sol}$ (e/Å <sup>3</sup> ), $B_{sol}$ (Å <sup>2</sup> )	0.34 , 57.8	EDS
Estimated twinning fraction	No twinning to report.	Xtriage
L-test for twinning <sup>2</sup>	$\langle  L  \rangle = 0.48$ , $\langle L^2 \rangle = 0.31$	Xtriage
Outliers	0 of 278235 reflections	Xtriage
$F_o, F_c$ correlation	0.98	EDS
Total number of atoms	4554	wwPDB-VP
Average B, all atoms (Å <sup>2</sup> )	13.0	wwPDB-VP

Xtriage's analysis on translational NCS is as follows: *The largest off-origin peak in the Patterson function is 4.58% of the height of the origin peak. No significant pseudotranslation is detected.*

<sup>1</sup>Intensities estimated from amplitudes.

<sup>2</sup>Theoretical values of  $\langle |L| \rangle$ ,  $\langle L^2 \rangle$  for acentric reflections are 0.5, 0.375 respectively for untwinned datasets, and 0.333, 0.2 for perfectly twinned datasets.

## 5 Model quality [i](#)

### 5.1 Standard geometry [i](#)

Bond lengths and bond angles in the following residue types are not validated in this section: K, MN, 4MJ

The Z score for a bond length (or angle) is the number of standard deviations the observed value is removed from the expected value. A bond length (or angle) with  $|Z| > 5$  is considered an outlier worth inspection. RMSZ is the root-mean-square of all Z scores of the bond lengths (or angles).

Mol	Chain	Bond lengths		Bond angles	
		RMSZ	$\# Z  > 5$	RMSZ	$\# Z  > 5$
1	A	1.25	38/4140 (0.9%)	1.14	32/5626 (0.6%)

Chiral center outliers are detected by calculating the chiral volume of a chiral center and verifying if the center is modelled as a planar moiety or with the opposite hand. A planarity outlier is detected by checking planarity of atoms in a peptide group, atoms in a mainchain group or atoms of a sidechain that are expected to be planar.

Mol	Chain	#Chirality outliers	#Planarity outliers
1	A	0	3

All (38) bond length outliers are listed below:

Mol	Chain	Res	Type	Atoms	Z	Observed(Å)	Ideal(Å)
1	A	380	ARG	CA-CB	14.77	1.86	1.53
1	A	202	GLU	CD-OE2	9.79	1.36	1.25
1	A	370	ARG	CZ-NH2	9.71	1.45	1.33
1	A	473	GLU	CA-CB	9.46	1.74	1.53
1	A	486	LYS	CD-CE	-8.88	1.29	1.51
1	A	381[A]	LYS	CE-NZ	8.59	1.70	1.49
1	A	381[B]	LYS	CE-NZ	8.59	1.70	1.49
1	A	389	ASN	CG-ND2	-8.52	1.11	1.32
1	A	377[A]	GLU	CD-OE2	7.58	1.33	1.25
1	A	377[B]	GLU	CD-OE2	7.58	1.33	1.25
1	A	282	GLU	CD-OE1	7.29	1.33	1.25
1	A	452	ARG	CG-CD	6.72	1.68	1.51
1	A	221[A]	MET	CG-SD	-6.70	1.63	1.81
1	A	221[B]	MET	CG-SD	-6.70	1.63	1.81
1	A	202	GLU	CD-OE1	6.46	1.32	1.25
1	A	243	SER	CA-CB	6.45	1.62	1.52
1	A	15[A]	GLU	CG-CD	6.34	1.61	1.51
1	A	15[B]	GLU	CG-CD	6.34	1.61	1.51

*Continued on next page...*

*Continued from previous page...*

Mol	Chain	Res	Type	Atoms	Z	Observed(Å)	Ideal(Å)
1	A	15[A]	GLU	CD-OE2	6.24	1.32	1.25
1	A	15[B]	GLU	CD-OE2	6.24	1.32	1.25
1	A	18[A]	LYS	CE-NZ	6.24	1.64	1.49
1	A	18[B]	LYS	CE-NZ	6.24	1.64	1.49
1	A	382	ARG	CD-NE	-6.00	1.36	1.46
1	A	480[A]	SER	CB-OG	5.90	1.50	1.42
1	A	480[B]	SER	CB-OG	5.90	1.50	1.42
1	A	473	GLU	CD-OE1	5.67	1.31	1.25
1	A	209	TRP	CZ3-CH2	5.47	1.48	1.40
1	A	18[A]	LYS	CD-CE	5.44	1.64	1.51
1	A	18[B]	LYS	CD-CE	5.44	1.64	1.51
1	A	65	ARG	NE-CZ	5.33	1.40	1.33
1	A	282	GLU	CG-CD	-5.33	1.44	1.51
1	A	380	ARG	CG-CD	-5.32	1.38	1.51
1	A	337	LYS	CE-NZ	-5.20	1.36	1.49
1	A	132	PHE	CG-CD2	-5.12	1.31	1.38
1	A	370	ARG	NE-CZ	5.10	1.39	1.33
1	A	97	ARG	CZ-NH1	-5.10	1.26	1.33
1	A	377[A]	GLU	CD-OE1	5.07	1.31	1.25
1	A	377[B]	GLU	CD-OE1	5.07	1.31	1.25

All (32) bond angle outliers are listed below:

Mol	Chain	Res	Type	Atoms	Z	Observed(°)	Ideal(°)
1	A	404	ASP	CB-CG-OD2	12.98	129.98	118.30
1	A	377[A]	GLU	CG-CD-OE2	-8.97	100.35	118.30
1	A	377[B]	GLU	CG-CD-OE2	-8.97	100.35	118.30
1	A	380	ARG	CG-CD-NE	8.93	130.56	111.80
1	A	435	ARG	NE-CZ-NH1	-8.19	116.20	120.30
1	A	452	ARG	CG-CD-NE	-7.75	95.52	111.80
1	A	83[A]	ARG	NE-CZ-NH2	-7.52	116.54	120.30
1	A	83[B]	ARG	NE-CZ-NH2	-7.52	116.54	120.30
1	A	404	ASP	CB-CG-OD1	-7.50	111.55	118.30
1	A	491	ASP	CB-CG-OD2	-6.91	112.08	118.30
1	A	398[A]	ARG	NE-CZ-NH2	6.44	123.52	120.30
1	A	398[B]	ARG	NE-CZ-NH2	6.44	123.52	120.30
1	A	202	GLU	OE1-CD-OE2	6.43	131.02	123.30
1	A	380	ARG	NE-CZ-NH1	6.36	123.48	120.30
1	A	254	ASP	CB-CG-OD2	-6.32	112.62	118.30
1	A	484[A]	ASP	CB-CG-OD1	6.12	123.81	118.30
1	A	484[B]	ASP	CB-CG-OD1	6.12	123.81	118.30
1	A	42[A]	ARG	NE-CZ-NH2	-6.09	117.25	120.30

*Continued on next page...*



Continued from previous page...

Mol	Chain	Res	Type	Atoms	Z	Observed(°)	Ideal(°)
1	A	42[B]	ARG	NE-CZ-NH2	-6.09	117.25	120.30
1	A	86	ARG	NE-CZ-NH1	5.83	123.22	120.30
1	A	128	ASP	CB-CG-OD2	-5.73	113.14	118.30
1	A	156[A]	MET	CG-SD-CE	5.58	109.13	100.20
1	A	156[B]	MET	CG-SD-CE	5.58	109.13	100.20
1	A	337	LYS	CD-CE-NZ	5.54	124.44	111.70
1	A	473	GLU	CG-CD-OE1	5.51	129.32	118.30
1	A	407	ASP	CB-CG-OD2	-5.40	113.44	118.30
1	A	473	GLU	CG-CD-OE2	-5.39	107.52	118.30
1	A	413	ASP	CB-CG-OD2	-5.14	113.68	118.30
1	A	336	ARG	NE-CZ-NH1	-5.12	117.74	120.30
1	A	385	ASP	CB-CG-OD1	5.06	122.85	118.30
1	A	377[A]	GLU	CG-CD-OE1	5.03	128.37	118.30
1	A	377[B]	GLU	CG-CD-OE1	5.03	128.37	118.30

There are no chirality outliers.

All (3) planarity outliers are listed below:

Mol	Chain	Res	Type	Group
1	A	377[A]	GLU	Sidechain
1	A	380	ARG	Sidechain
1	A	83[A]	ARG	Sidechain

## 5.2 Too-close contacts ⓘ

In the following table, the Non-H and H(model) columns list the number of non-hydrogen atoms and hydrogen atoms in the chain respectively. The H(added) column lists the number of hydrogen atoms added and optimized by MolProbity. The Clashes column lists the number of clashes within the asymmetric unit, whereas Symm-Clashes lists symmetry related clashes.

Mol	Chain	Non-H	H(model)	H(added)	Clashes	Symm-Clashes
1	A	4041	0	3934	29	0
2	A	45	0	37	4	0
3	A	1	0	0	0	0
4	A	2	0	0	0	0
5	A	465	0	0	12	2
All	All	4554	0	3971	33	2

The all-atom clashscore is defined as the number of clashes found per 1000 atoms (including hydrogen atoms). The all-atom clashscore for this structure is 4.

All (33) close contacts within the same asymmetric unit are listed below, sorted by their clash

magnitude.

Atom-1	Atom-2	Interatomic distance (Å)	Clash overlap (Å)
1:A:473:GLU:CA	1:A:473:GLU:CB	1.74	1.64
1:A:381[A]:LYS:NZ	1:A:381[A]:LYS:CE	1.70	1.49
1:A:380:ARG:CB	1:A:380:ARG:CA	1.86	1.48
1:A:381[A]:LYS:HG3	5:A:713:HOH:O	1.43	1.17
1:A:59[A]:MET:SD	5:A:971:HOH:O	2.21	0.97
1:A:59[A]:MET:CE	5:A:971:HOH:O	2.17	0.92
2:A:601:4MJ:H26	2:A:601:4MJ:H18	1.55	0.88
1:A:473:GLU:CA	1:A:473:GLU:CG	2.54	0.86
1:A:59[A]:MET:HE3	5:A:971:HOH:O	1.76	0.85
1:A:381[A]:LYS:CD	1:A:381[A]:LYS:NZ	2.48	0.76
2:A:601:4MJ:H18	2:A:601:4MJ:C18	2.17	0.74
1:A:380:ARG:CA	1:A:380:ARG:CG	2.65	0.73
1:A:473:GLU:C	1:A:473:GLU:CB	2.58	0.72
1:A:380:ARG:C	1:A:380:ARG:CB	2.62	0.66
1:A:381[A]:LYS:HE3	5:A:713:HOH:O	1.97	0.65
1:A:473:GLU:CB	1:A:473:GLU:N	2.58	0.61
1:A:381[A]:LYS:CG	5:A:713:HOH:O	2.22	0.59
1:A:149[A]:LYS:HD3	5:A:930:HOH:O	2.05	0.55
1:A:445:HIS:HE1	5:A:815:HOH:O	1.91	0.52
1:A:108[A]:ASP:OD1	1:A:108[A]:ASP:C	2.47	0.52
1:A:363:ARG:NH1	5:A:706:HOH:O	2.45	0.48
2:A:601:4MJ:H11	2:A:601:4MJ:H30	1.79	0.47
1:A:377[B]:GLU:HG3	5:A:713:HOH:O	2.13	0.47
1:A:59[B]:MET:O	1:A:60:LYS:CB	2.61	0.46
1:A:380:ARG:CB	1:A:380:ARG:N	2.72	0.44
1:A:129[A]:ASP:O	1:A:129[A]:ASP:CG	2.54	0.44
1:A:280:PHE:O	1:A:282:GLU:HG3	2.18	0.43
1:A:59[A]:MET:HG2	5:A:750:HOH:O	2.18	0.42
1:A:149[A]:LYS:CD	5:A:930:HOH:O	2.67	0.42
2:A:601:4MJ:H29	2:A:601:4MJ:O8	2.19	0.41
1:A:319:LEU:HA	1:A:320:THR:HA	1.93	0.40
1:A:337:LYS:HE3	1:A:337:LYS:HB3	1.96	0.40
1:A:267:GLY:HA3	1:A:299:LYS:O	2.21	0.40

All (2) symmetry-related close contacts are listed below. The label for Atom-2 includes the symmetry operator and encoded unit-cell translations to be applied.

Atom-1	Atom-2	Interatomic distance (Å)	Clash overlap (Å)
5:A:785:HOH:O	5:A:785:HOH:O[2_655]	1.08	1.12
5:A:742:HOH:O	5:A:944:HOH:O[2_655]	1.54	0.66

## 5.3 Torsion angles [i](#)

### 5.3.1 Protein backbone [i](#)

In the following table, the Percentiles column shows the percent Ramachandran outliers of the chain as a percentile score with respect to all X-ray entries followed by that with respect to entries of similar resolution.

The Analysed column shows the number of residues for which the backbone conformation was analysed, and the total number of residues.

Mol	Chain	Analysed	Favoured	Allowed	Outliers	Percentiles
1	A	524/508 (103%)	511 (98%)	11 (2%)	2 (0%)	39 12

All (2) Ramachandran outliers are listed below:

Mol	Chain	Res	Type
1	A	59[A]	MET
1	A	59[B]	MET

### 5.3.2 Protein sidechains [i](#)

In the following table, the Percentiles column shows the percent sidechain outliers of the chain as a percentile score with respect to all X-ray entries followed by that with respect to entries of similar resolution.

The Analysed column shows the number of residues for which the sidechain conformation was analysed, and the total number of residues.

Mol	Chain	Analysed	Rotameric	Outliers	Percentiles
1	A	434/430 (101%)	434 (100%)	0	100 100

There are no protein residues with a non-rotameric sidechain to report.

Some sidechains can be flipped to improve hydrogen bonding and reduce clashes. All (3) such sidechains are listed below:

Mol	Chain	Res	Type
1	A	125	ASN
1	A	194	GLN
1	A	445	HIS

### 5.3.3 RNA [i](#)

There are no RNA molecules in this entry.

## 5.4 Non-standard residues in protein, DNA, RNA chains ⓘ

There are no non-standard protein/DNA/RNA residues in this entry.

## 5.5 Carbohydrates ⓘ

There are no carbohydrates in this entry.

## 5.6 Ligand geometry ⓘ

Of 4 ligands modelled in this entry, 3 are monoatomic - leaving 1 for Mogul analysis.

In the following table, the Counts columns list the number of bonds (or angles) for which Mogul statistics could be retrieved, the number of bonds (or angles) that are observed in the model and the number of bonds (or angles) that are defined in the chemical component dictionary. The Link column lists molecule types, if any, to which the group is linked. The Z score for a bond length (or angle) is the number of standard deviations the observed value is removed from the expected value. A bond length (or angle) with  $|Z| > 2$  is considered an outlier worth inspection. RMSZ is the root-mean-square of all Z scores of the bond lengths (or angles).

Mol	Type	Chain	Res	Link	Bond lengths			Bond angles		
					Counts	RMSZ	$\# Z  > 2$	Counts	RMSZ	$\# Z  > 2$
2	4MJ	A	601	3,4	42,49,49	2.04	10 (23%)	48,76,76	2.54	12 (25%)

In the following table, the Chirals column lists the number of chiral outliers, the number of chiral centers analysed, the number of these observed in the model and the number defined in the chemical component dictionary. Similar counts are reported in the Torsion and Rings columns. '-' means no outliers of that kind were identified.

Mol	Type	Chain	Res	Link	Chirals	Torsions	Rings
2	4MJ	A	601	3,4	-	0/25/41/41	0/4/5/5

All (10) bond length outliers are listed below:

Mol	Chain	Res	Type	Atoms	Z	Observed(Å)	Ideal(Å)
2	A	601	4MJ	C11-N2	-6.00	1.42	1.48
2	A	601	4MJ	C4-N2	-4.42	1.34	1.39
2	A	601	4MJ	C6-N1	-2.87	1.32	1.38
2	A	601	4MJ	C24-C23	-2.76	1.41	1.51
2	A	601	4MJ	C6-N4	-2.60	1.32	1.38
2	A	601	4MJ	C12-N2	2.18	1.41	1.38
2	A	601	4MJ	C5-C3	3.02	1.47	1.40
2	A	601	4MJ	O10-C23	4.18	1.29	1.21

*Continued on next page...*

*Continued from previous page...*

Mol	Chain	Res	Type	Atoms	Z	Observed(Å)	Ideal(Å)
2	A	601	4MJ	C29-C30	4.29	1.47	1.38
2	A	601	4MJ	C22-N1	5.04	1.42	1.33

All (12) bond angle outliers are listed below:

Mol	Chain	Res	Type	Atoms	Z	Observed(°)	Ideal(°)
2	A	601	4MJ	C21-C22-N1	-6.78	114.65	123.52
2	A	601	4MJ	C21-N3-C15	-6.45	115.05	121.72
2	A	601	4MJ	O10-C23-C24	-3.69	114.46	121.17
2	A	601	4MJ	C28-C29-C30	-3.41	115.46	120.20
2	A	601	4MJ	N1-C6-N4	-3.24	122.24	127.69
2	A	601	4MJ	C22-C21-C4	-3.07	117.98	119.94
2	A	601	4MJ	C17-C16-C5	-2.77	105.84	111.78
2	A	601	4MJ	C19-C16-C5	-2.65	104.91	111.33
2	A	601	4MJ	C21-C4-N2	-2.63	118.61	120.52
2	A	601	4MJ	C12-C15-N3	-2.06	119.02	120.54
2	A	601	4MJ	C27-C28-C29	2.78	124.61	119.88
2	A	601	4MJ	C22-N1-C6	9.94	123.45	115.16

There are no chirality outliers.

There are no torsion outliers.

There are no ring outliers.

1 monomer is involved in 4 short contacts:

Mol	Chain	Res	Type	Clashes	Symm-Clashes
2	A	601	4MJ	4	0

## 5.7 Other polymers [i](#)

There are no such residues in this entry.

## 5.8 Polymer linkage issues [i](#)

There are no chain breaks in this entry.

## 6 Fit of model and data [i](#)

### 6.1 Protein, DNA and RNA chains [i](#)

In the following table, the column labelled ‘#RSRZ> 2’ contains the number (and percentage) of RSRZ outliers, followed by percent RSRZ outliers for the chain as percentile scores relative to all X-ray entries and entries of similar resolution. The OWAB column contains the minimum, median, 95<sup>th</sup> percentile and maximum values of the occupancy-weighted average B-factor per residue. The column labelled ‘Q< 0.9’ lists the number of (and percentage) of residues with an average occupancy less than 0.9.

Mol	Chain	Analysed	<RSRZ>	#RSRZ>2	OWAB(Å <sup>2</sup> )	Q<0.9
1	A	497/508 (97%)	-0.23	2 (0%) 93 87	6, 10, 18, 27	0

All (2) RSRZ outliers are listed below:

Mol	Chain	Res	Type	RSRZ
1	A	3	ALA	3.6
1	A	61	ASN	2.0

### 6.2 Non-standard residues in protein, DNA, RNA chains [i](#)

There are no non-standard protein/DNA/RNA residues in this entry.

### 6.3 Carbohydrates [i](#)

There are no carbohydrates in this entry.

### 6.4 Ligands [i](#)

In the following table, the Atoms column lists the number of modelled atoms in the group and the number defined in the chemical component dictionary. LLDF column lists the quality of electron density of the group with respect to its neighbouring residues in protein, DNA or RNA chains. The B-factors column lists the minimum, median, 95<sup>th</sup> percentile and maximum values of B factors of atoms in the group. The column labelled ‘Q< 0.9’ lists the number of atoms with occupancy less than 0.9.

Mol	Type	Chain	Res	Atoms	RSCC	RSR	LLDF	B-factors(Å <sup>2</sup> )	Q<0.9
2	4MJ	A	601	45/45	0.98	0.09	3.61	5,6,11,14	0
4	K	A	603	1/1	1.00	0.06	-0.49	6,6,6,6	0
4	K	A	604	1/1	1.00	0.05	-0.91	7,7,7,7	0
3	MN	A	602	1/1	1.00	0.05	-1.77	7,7,7,7	0

## 6.5 Other polymers [i](#)

There are no such residues in this entry.