



# wwPDB X-ray Structure Validation Summary Report ⓘ

Feb 1, 2016 – 12:04 AM GMT

PDB ID : 1ZET  
Title : X-ray data do not support hoogsteen base-pairing during replication by human polymerase iota  
Authors : Wang, J.  
Deposited on : 2005-04-19  
Resolution : 2.30 Å(reported)

This is a wwPDB X-ray Structure Validation Summary Report for a publicly released PDB entry.  
We welcome your comments at [validation@mail.wwpdb.org](mailto:validation@mail.wwpdb.org)  
A user guide is available at  
<http://wwpdb.org/validation/2016/XrayValidationReportHelp>  
with specific help available everywhere you see the ⓘ symbol.

---

The following versions of software and data (see [references ⓘ](#)) were used in the production of this report:

MolProbity : 4.02b-467  
Mogul : 1.7 (RC4), CSD as536be (2015)  
Xtriage (Phenix) : 1.9-1692  
EDS : rb-20026688  
Percentile statistics : 20151230.v01 (using entries in the PDB archive December 30th 2015)  
Refmac : 5.8.0135  
CCP4 : 6.5.0  
Ideal geometry (proteins) : Engh & Huber (2001)  
Ideal geometry (DNA, RNA) : Parkinson et al. (1996)  
Validation Pipeline (wwPDB-VP) : trunk26865

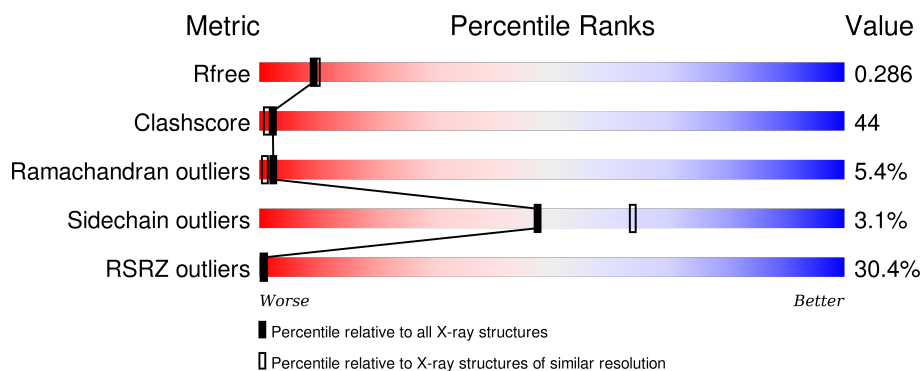
# 1 Overall quality at a glance

The following experimental techniques were used to determine the structure:

## *X-RAY DIFFRACTION*

The reported resolution of this entry is 2.30 Å.

Percentile scores (ranging between 0-100) for global validation metrics of the entry are shown in the following graphic. The table shows the number of entries on which the scores are based.



Metric	Whole archive (#Entries)	Similar resolution (#Entries, resolution range(Å))
$R_{free}$	91344	3852 (2.30-2.30)
Clashscore	102246	4452 (2.30-2.30)
Ramachandran outliers	100387	4410 (2.30-2.30)
Sidechain outliers	100360	4409 (2.30-2.30)
RSRZ outliers	91569	3857 (2.30-2.30)

The table below summarises the geometric issues observed across the polymeric chains and their fit to the electron density. The red, orange, yellow and green segments on the lower bar indicate the fraction of residues that contain outliers for  $\geq 3$ , 2, 1 and 0 types of geometric quality criteria. A grey segment represents the fraction of residues that are not modelled. The numeric value for each fraction is indicated below the corresponding segment, with a dot representing fractions  $\leq 5\%$ . The upper red bar (where present) indicates the fraction of residues that have poor fit to the electron density. The numeric value is given above the bar.

Mol	Chain	Length	Quality of chain
1	T	14	<div> <div>36%</div> <div>93%</div> <div>7%</div> </div>
2	P	13	<div> <div>15%</div> <div>100%</div> </div>
3	A	388	<div> <div>30%</div> <div>53%</div> <div>42%</div> <div>• •</div> </div>

The following table lists non-polymeric compounds, carbohydrate monomers and non-standard residues in protein, DNA, RNA chains that are outliers for geometric or electron-density-fit criteria:

Mol	Type	Chain	Res	Chirality	Geometry	Clashes	Electron density
1	BRU	T	12	-	-	X	-
5	TTP	A	451	-	-	-	X

## 2 Entry composition [i](#)

There are 6 unique types of molecules in this entry. The entry contains 3816 atoms, of which 0 are hydrogens and 0 are deuteriums.

In the tables below, the ZeroOcc column contains the number of atoms modelled with zero occupancy, the AltConf column contains the number of residues with at least one atom in alternate conformation and the Trace column contains the number of residues modelled with at most 2 atoms.

- Molecule 1 is a DNA chain called 5'-D(P\*AP\*GP\*GP\*GP\*(BRU)P\*CP\*CP\*(BRU)P\*(BRU)P\*CP\*CP\*CP\*CP\*C)-3'.

Mol	Chain	Residues	Atoms						ZeroOcc	AltConf	Trace
1	T	14	Total	Br	C	N	O	P	0	0	0
			280	3	130	47	86	14			

- Molecule 2 is a DNA chain called 5'-D(\*GP\*GP\*GP\*GP\*GP\*AP\*AP\*GP\*GP\*AP\*CP\*CP\*(DOC))-3'.

Mol	Chain	Residues	Atoms					ZeroOcc	AltConf	Trace
2	P	13	Total	C	N	O	P	0	0	0
			270	127	59	72	12			

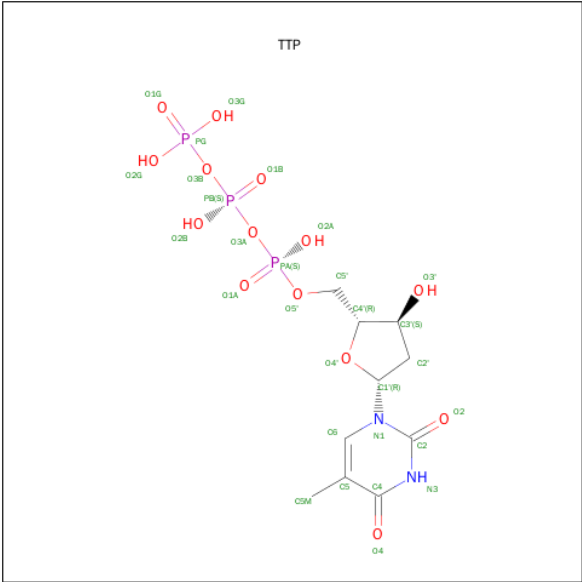
- Molecule 3 is a protein called Polymerase (DNA directed) iota.

Mol	Chain	Residues	Atoms					ZeroOcc	AltConf	Trace
3	A	388	Total	C	N	O	S	0	0	0
			3068	1939	534	573	22			

- Molecule 4 is MAGNESIUM ION (three-letter code: MG) (formula: Mg).

Mol	Chain	Residues	Atoms		ZeroOcc	AltConf
4	A	1	Total	Mg	0	0
			1	1		

- Molecule 5 is THYMIDINE-5'-TRIPHOSPHATE (three-letter code: TTP) (formula: C<sub>10</sub>H<sub>17</sub>N<sub>2</sub>O<sub>14</sub>P<sub>3</sub>).



Mol	Chain	Residues	Atoms					ZeroOcc	AltConf
5	A	1	Total	C	N	O	P	0	0
			29	10	2	14	3		

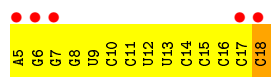
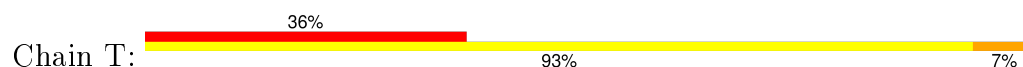
- Molecule 6 is water.

Mol	Chain	Residues	Atoms		ZeroOcc	AltConf
6	A	160	Total	O	0	0
			160	160		
6	P	2	Total	O	0	0
			2	2		
6	T	6	Total	O	0	0
			6	6		

### 3 Residue-property plots [i](#)

These plots are drawn for all protein, RNA and DNA chains in the entry. The first graphic for a chain summarises the proportions of errors displayed in the second graphic. The second graphic shows the sequence view annotated by issues in geometry and electron density. Residues are color-coded according to the number of geometric quality criteria for which they contain at least one outlier: green = 0, yellow = 1, orange = 2 and red = 3 or more. A red dot above a residue indicates a poor fit to the electron density (RSRZ > 2). Stretches of 2 or more consecutive residues without any outlier are shown as a green connector. Residues present in the sample, but not in the model, are shown in grey.

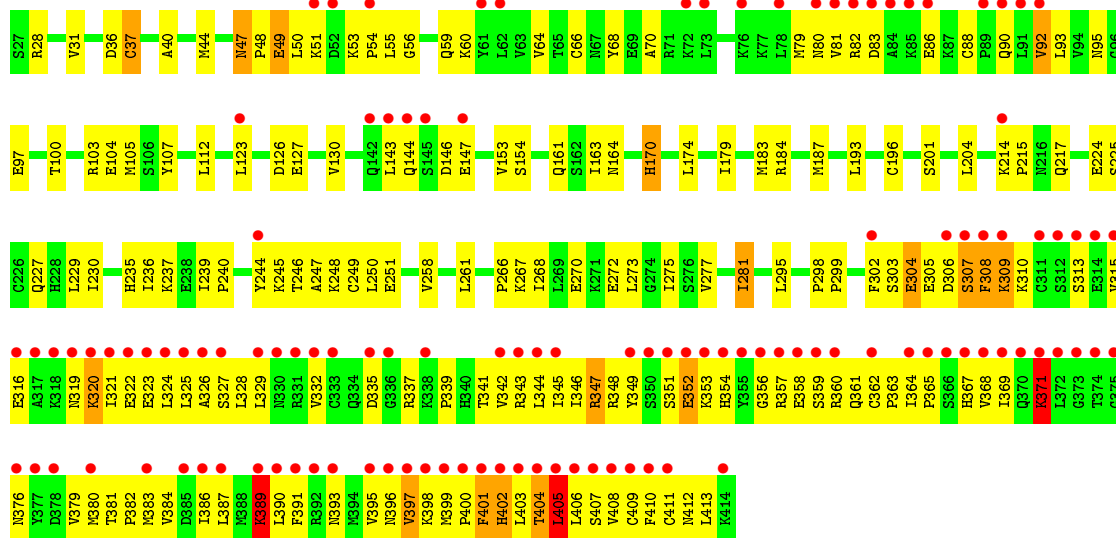
- Molecule 1: 5'-D(P\*AP\*GP\*GP\*GP\*(BRU)P\*CP\*CP\*(BRU)P\*(BRU)P\*CP\*CP\*CP\*CP\*C)-3'



- Molecule 2: 5'-D(\*GP\*GP\*GP\*GP\*GP\*AP\*AP\*GP\*GP\*AP\*CP\*CP\*(DOC))-3'



- Molecule 3: Polymerase (DNA directed) iota



## 4 Data and refinement statistics

Property	Value	Source
Space group	P 65 2 2	Depositor
Cell constants a, b, c, $\alpha$ , $\beta$ , $\gamma$	98.83Å 98.83Å 202.75Å 90.00° 90.00° 120.00°	Depositor
Resolution (Å)	39.43 – 2.30 39.43 – 2.30	Depositor EDS
% Data completeness (in resolution range)	98.5 (39.43-2.30) 98.5 (39.43-2.30)	Depositor EDS
$R_{merge}$	(Not available)	Depositor
$R_{sym}$	(Not available)	Depositor
$\langle I/\sigma(I) \rangle$ <sup>1</sup>	4.34 (at 2.29Å)	Xtriage
Refinement program	CNS 1.0	Depositor
R, $R_{free}$	0.261 , 0.288 0.261 , 0.286	Depositor DCC
$R_{free}$ test set	1529 reflections (6.14%)	DCC
Wilson B-factor (Å <sup>2</sup> )	44.0	Xtriage
Anisotropy	0.445	Xtriage
Bulk solvent $k_{sol}$ (e/Å <sup>3</sup> ), $B_{sol}$ (Å <sup>2</sup> )	0.31 , 66.4	EDS
Estimated twinning fraction	No twinning to report.	Xtriage
L-test for twinning <sup>2</sup>	$\langle  L  \rangle = 0.47$ , $\langle L^2 \rangle = 0.30$	Xtriage
Outliers	0 of 26488 reflections	Xtriage
$F_o, F_c$ correlation	0.91	EDS
Total number of atoms	3816	wwPDB-VP
Average B, all atoms (Å <sup>2</sup> )	71.0	wwPDB-VP

Xtriage's analysis on translational NCS is as follows: *The largest off-origin peak in the Patterson function is 4.17% of the height of the origin peak. No significant pseudotranslation is detected.*

<sup>1</sup>Intensities estimated from amplitudes.

<sup>2</sup>Theoretical values of  $\langle |L| \rangle$ ,  $\langle L^2 \rangle$  for acentric reflections are 0.5, 0.375 respectively for untwinned datasets, and 0.333, 0.2 for perfectly twinned datasets.

## 5 Model quality ⓘ

### 5.1 Standard geometry ⓘ

Bond lengths and bond angles in the following residue types are not validated in this section: DOC, MG, TTP, BRU

The Z score for a bond length (or angle) is the number of standard deviations the observed value is removed from the expected value. A bond length (or angle) with  $|Z| > 5$  is considered an outlier worth inspection. RMSZ is the root-mean-square of all Z scores of the bond lengths (or angles).

Mol	Chain	Bond lengths		Bond angles	
		RMSZ	$\# Z  > 5$	RMSZ	$\# Z  > 5$
1	T	1.90	2/243 (0.8%)	1.80	4/366 (1.1%)
2	P	0.39	0/285	0.70	0/440
3	A	0.30	0/3116	0.55	0/4201
All	All	0.58	2/3644 (0.1%)	0.73	4/5007 (0.1%)

All (2) bond length outliers are listed below:

Mol	Chain	Res	Type	Atoms	Z	Observed(Å)	Ideal(Å)
1	T	18	DC	P-O5'	26.16	1.85	1.59
1	T	18	DC	P-OP2	-11.61	1.29	1.49

All (4) bond angle outliers are listed below:

Mol	Chain	Res	Type	Atoms	Z	Observed(°)	Ideal(°)
1	T	18	DC	O5'-P-OP2	-25.00	80.71	110.70
1	T	18	DC	O5'-P-OP1	-11.67	95.20	105.70
1	T	18	DC	P-O5'-C5'	-11.35	102.74	120.90
1	T	18	DC	OP1-P-OP2	7.61	131.02	119.60

There are no chirality outliers.

There are no planarity outliers.

### 5.2 Too-close contacts ⓘ

In the following table, the Non-H and H(model) columns list the number of non-hydrogen atoms and hydrogen atoms in the chain respectively. The H(added) column lists the number of hydrogen atoms added and optimized by MolProbity. The Clashes column lists the number of clashes within the asymmetric unit, whereas Symm-Clashes lists symmetry related clashes.



Mol	Chain	Non-H	H(model)	H(added)	Clashes	Symm-Clashes
1	T	280	0	149	41	0
2	P	270	0	145	49	0
3	A	3068	0	3154	249	0
4	A	1	0	0	0	0
5	A	29	0	10	1	0
6	A	160	0	0	3	0
6	P	2	0	0	0	0
6	T	6	0	0	1	0
All	All	3816	0	3458	308	0

The all-atom clashscore is defined as the number of clashes found per 1000 atoms (including hydrogen atoms). The all-atom clashscore for this structure is 44.

The worst 5 of 308 close contacts within the same asymmetric unit are listed below, sorted by their clash magnitude.

Atom-1	Atom-2	Interatomic distance (Å)	Clash overlap (Å)
1:T:15:DC:H2''	1:T:16:DC:H5''	1.22	1.16
1:T:17:DC:H1'	1:T:18:DC:C5'	1.78	1.12
2:P:7:DA:H2''	2:P:8:DG:H5''	1.12	1.11
2:P:9:DG:H2''	2:P:10:DA:H5'	1.32	1.06
3:A:309:LYS:HD3	3:A:406:LEU:HB2	1.34	1.05

There are no symmetry-related clashes.

## 5.3 Torsion angles [i](#)

### 5.3.1 Protein backbone [i](#)

In the following table, the Percentiles column shows the percent Ramachandran outliers of the chain as a percentile score with respect to all X-ray entries followed by that with respect to entries of similar resolution.

The Analysed column shows the number of residues for which the backbone conformation was analysed, and the total number of residues.

Mol	Chain	Analysed	Favoured	Allowed	Outliers	Percentiles
3	A	386/388 (100%)	302 (78%)	63 (16%)	21 (5%)	<b>2</b> <b>1</b>

5 of 21 Ramachandran outliers are listed below:

Mol	Chain	Res	Type
3	A	308	PHE
3	A	326	ALA
3	A	80	ASN
3	A	83	ASP
3	A	304	GLU

### 5.3.2 Protein sidechains ⓘ

In the following table, the Percentiles column shows the percent sidechain outliers of the chain as a percentile score with respect to all X-ray entries followed by that with respect to entries of similar resolution.

The Analysed column shows the number of residues for which the sidechain conformation was analysed, and the total number of residues.

Mol	Chain	Analysed	Rotameric	Outliers	Percentiles
3	A	353/353 (100%)	342 (97%)	11 (3%)	47 64

5 of 11 residues with a non-rotameric sidechain are listed below:

Mol	Chain	Res	Type
3	A	261	LEU
3	A	281	ILE
3	A	389	LYS
3	A	229	LEU
3	A	371	LYS

Some sidechains can be flipped to improve hydrogen bonding and reduce clashes. 5 of 11 such sidechains are listed below:

Mol	Chain	Res	Type
3	A	161	GLN
3	A	170	HIS
3	A	376	ASN
3	A	95	ASN
3	A	262	GLN

### 5.3.3 RNA ⓘ

There are no RNA molecules in this entry.

## 5.4 Non-standard residues in protein, DNA, RNA chains ⓘ

4 non-standard protein/DNA/RNA residues are modelled in this entry.

In the following table, the Counts columns list the number of bonds (or angles) for which Mogul statistics could be retrieved, the number of bonds (or angles) that are observed in the model and the number of bonds (or angles) that are defined in the chemical component dictionary. The Link column lists molecule types, if any, to which the group is linked. The Z score for a bond length (or angle) is the number of standard deviations the observed value is removed from the expected value. A bond length (or angle) with  $|Z| > 2$  is considered an outlier worth inspection. RMSZ is the root-mean-square of all Z scores of the bond lengths (or angles).

Mol	Type	Chain	Res	Link	Bond lengths			Bond angles		
					Counts	RMSZ	# $ Z  > 2$	Counts	RMSZ	# $ Z  > 2$
2	DOC	P	13	1,2	11,19,20	0.81	0	14,26,29	1.31	2 (14%)
1	BRU	T	12	1,2	13,21,22	3.60	4 (30%)	16,30,33	4.11	3 (18%)
1	BRU	T	13	1,2	13,21,22	3.56	4 (30%)	16,30,33	4.07	2 (12%)
1	BRU	T	9	1,2	13,21,22	3.65	4 (30%)	16,30,33	4.11	2 (12%)

In the following table, the Chirals column lists the number of chiral outliers, the number of chiral centers analysed, the number of these observed in the model and the number defined in the chemical component dictionary. Similar counts are reported in the Torsion and Rings columns. '-' means no outliers of that kind were identified.

Mol	Type	Chain	Res	Link	Chirals	Torsions	Rings
2	DOC	P	13	1,2	-	0/3/18/19	0/2/2/2
1	BRU	T	12	1,2	-	0/3/21/22	0/2/2/2
1	BRU	T	13	1,2	-	0/3/21/22	0/2/2/2
1	BRU	T	9	1,2	-	0/3/21/22	0/2/2/2

The worst 5 of 12 bond length outliers are listed below:

Mol	Chain	Res	Type	Atoms	Z	Observed(Å)	Ideal(Å)
1	T	12	BRU	BR-C5	-11.04	1.60	1.90
1	T	13	BRU	BR-C5	-11.02	1.60	1.90
1	T	9	BRU	BR-C5	-10.99	1.61	1.90
1	T	12	BRU	C6-N1	2.34	1.38	1.35
1	T	9	BRU	C6-N1	2.46	1.38	1.35

The worst 5 of 9 bond angle outliers are listed below:

Mol	Chain	Res	Type	Atoms	Z	Observed(°)	Ideal(°)
1	T	9	BRU	C5-C4-N3	-8.24	115.21	124.00
1	T	12	BRU	C5-C4-N3	-8.20	115.25	124.00

*Continued on next page...*

*Continued from previous page...*

Mol	Chain	Res	Type	Atoms	Z	Observed(°)	Ideal(°)
1	T	13	BRU	C5-C4-N3	-8.06	115.40	124.00
2	P	13	DOC	O4'-C4'-C5'	-3.10	104.97	109.54
1	T	12	BRU	C5-C6-N1	2.04	123.79	119.79

There are no chirality outliers.

There are no torsion outliers.

There are no ring outliers.

4 monomers are involved in 14 short contacts:

Mol	Chain	Res	Type	Clashes	Symm-Clashes
2	P	13	DOC	2	0
1	T	12	BRU	8	0
1	T	13	BRU	2	0
1	T	9	BRU	3	0

## 5.5 Carbohydrates [i](#)

There are no carbohydrates in this entry.

## 5.6 Ligand geometry [i](#)

Of 2 ligands modelled in this entry, 1 is monoatomic - leaving 1 for Mogul analysis.

In the following table, the Counts columns list the number of bonds (or angles) for which Mogul statistics could be retrieved, the number of bonds (or angles) that are observed in the model and the number of bonds (or angles) that are defined in the chemical component dictionary. The Link column lists molecule types, if any, to which the group is linked. The Z score for a bond length (or angle) is the number of standard deviations the observed value is removed from the expected value. A bond length (or angle) with  $|Z| > 2$  is considered an outlier worth inspection. RMSZ is the root-mean-square of all Z scores of the bond lengths (or angles).

Mol	Type	Chain	Res	Link	Bond lengths			Bond angles		
					Counts	RMSZ	# Z  > 2	Counts	RMSZ	# Z  > 2
5	TTP	A	451	4	21,30,30	6.16	7 (33%)	31,47,47	2.26	10 (32%)

In the following table, the Chirals column lists the number of chiral outliers, the number of chiral centers analysed, the number of these observed in the model and the number defined in the chemical component dictionary. Similar counts are reported in the Torsion and Rings columns. '-' means no outliers of that kind were identified.

Mol	Type	Chain	Res	Link	Chirals	Torsions	Rings
5	TTP	A	451	4	-	0/18/34/34	0/2/2/2

The worst 5 of 7 bond length outliers are listed below:

Mol	Chain	Res	Type	Atoms	Z	Observed(Å)	Ideal(Å)
5	A	451	TTP	C5M-C5	-26.27	0.99	1.51
5	A	451	TTP	PA-O1A	-4.83	1.33	1.51
5	A	451	TTP	PA-O5'	-3.97	1.40	1.59
5	A	451	TTP	C4-N3	3.10	1.38	1.33
5	A	451	TTP	C6-N1	3.95	1.40	1.35

The worst 5 of 10 bond angle outliers are listed below:

Mol	Chain	Res	Type	Atoms	Z	Observed(°)	Ideal(°)
5	A	451	TTP	C5-C4-N3	-3.94	120.75	125.14
5	A	451	TTP	C2'-C1'-N1	-3.58	105.45	114.16
5	A	451	TTP	PB-O3A-PA	-3.26	123.58	132.73
5	A	451	TTP	O2A-PA-O1A	-2.13	100.96	112.53
5	A	451	TTP	O4'-C1'-C2'	2.08	110.42	106.27

There are no chirality outliers.

There are no torsion outliers.

There are no ring outliers.

1 monomer is involved in 1 short contact:

Mol	Chain	Res	Type	Clashes	Symm-Clashes
5	A	451	TTP	1	0

## 5.7 Other polymers [i](#)

There are no such residues in this entry.

## 5.8 Polymer linkage issues [i](#)

There are no chain breaks in this entry.

## 6 Fit of model and data [i](#)

### 6.1 Protein, DNA and RNA chains [i](#)

In the following table, the column labelled ‘#RSRZ> 2’ contains the number (and percentage) of RSRZ outliers, followed by percent RSRZ outliers for the chain as percentile scores relative to all X-ray entries and entries of similar resolution. The OWAB column contains the minimum, median, 95<sup>th</sup> percentile and maximum values of the occupancy-weighted average B-factor per residue. The column labelled ‘Q< 0.9’ lists the number of (and percentage) of residues with an average occupancy less than 0.9.

Mol	Chain	Analysed	<RSRZ>	#RSRZ>2	OWAB(Å <sup>2</sup> )	Q<0.9
1	T	11/14 (78%)	2.29	5 (45%) 0 0	42, 54, 77, 82	11 (100%)
2	P	12/13 (92%)	1.52	2 (16%) 2 4	46, 54, 70, 74	12 (100%)
3	A	388/388 (100%)	1.78	118 (30%) 1 1	28, 61, 136, 147	0
All	All	411/415 (99%)	1.79	125 (30%) 1 1	28, 59, 135, 147	23 (5%)

The worst 5 of 125 RSRZ outliers are listed below:

Mol	Chain	Res	Type	RSRZ
3	A	397	VAL	14.5
3	A	372	LEU	11.1
3	A	400	PRO	10.8
3	A	336	GLY	10.6
3	A	399	MET	9.9

### 6.2 Non-standard residues in protein, DNA, RNA chains [i](#)

In the following table, the Atoms column lists the number of modelled atoms in the group and the number defined in the chemical component dictionary. LLDF column lists the quality of electron density of the group with respect to its neighbouring residues in protein, DNA or RNA chains. The B-factors column lists the minimum, median, 95<sup>th</sup> percentile and maximum values of B factors of atoms in the group. The column labelled ‘Q< 0.9’ lists the number of atoms with occupancy less than 0.9.

Mol	Type	Chain	Res	Atoms	RSCC	RSR	LLDF	B-factors(Å <sup>2</sup> )	Q<0.9
1	BRU	T	12	20/21	0.86	0.21	-	27,46,58,64	20
1	BRU	T	9	20/21	0.94	0.18	-	28,46,60,73	20
1	BRU	T	13	20/21	0.88	0.20	-	32,55,70,75	20
2	DOC	P	13	18/19	0.93	0.62	-	19,35,45,49	18

### 6.3 Carbohydrates [i](#)

There are no carbohydrates in this entry.

### 6.4 Ligands [i](#)

In the following table, the Atoms column lists the number of modelled atoms in the group and the number defined in the chemical component dictionary. LLDF column lists the quality of electron density of the group with respect to its neighbouring residues in protein, DNA or RNA chains. The B-factors column lists the minimum, median, 95<sup>th</sup> percentile and maximum values of B factors of atoms in the group. The column labelled 'Q< 0.9' lists the number of atoms with occupancy less than 0.9.

Mol	Type	Chain	Res	Atoms	RSCC	RSR	LLDF	B-factors( $\text{\AA}^2$ )	Q<0.9
5	TTP	A	451	29/29	0.88	0.45	2.25	27,43,60,65	29
4	MG	A	461	1/1	0.80	0.22	-	26,26,26,26	1

### 6.5 Other polymers [i](#)

There are no such residues in this entry.