



Full wwPDB X-ray Structure Validation Report ⓘ

Feb 1, 2016 – 07:04 AM GMT

PDB ID : 2ZEJ
Title : Structure of the ROC domain from the Parkinson's disease-associated leucine-rich repeat kinase 2 reveals a dimeric GTPase
Authors : Deng, J.
Deposited on : 2007-12-13
Resolution : 2.00 Å(reported)

This is a Full wwPDB X-ray Structure Validation Report for a publicly released PDB entry.
We welcome your comments at validation@mail.wwpdb.org
A user guide is available at
<http://wwpdb.org/validation/2016/XrayValidationReportHelp>
with specific help available everywhere you see the ⓘ symbol.

The following versions of software and data (see [references ⓘ](#)) were used in the production of this report:

MolProbity : 4.02b-467
Mogul : 1.7 (RC4), CSD as536be (2015)
Xtriage (Phenix) : 1.9-1692
EDS : rb-20026688
Percentile statistics : 20151230.v01 (using entries in the PDB archive December 30th 2015)
Refmac : 5.8.0135
CCP4 : 6.5.0
Ideal geometry (proteins) : Engh & Huber (2001)
Ideal geometry (DNA, RNA) : Parkinson et al. (1996)
Validation Pipeline (wwPDB-VP) : trunk26865

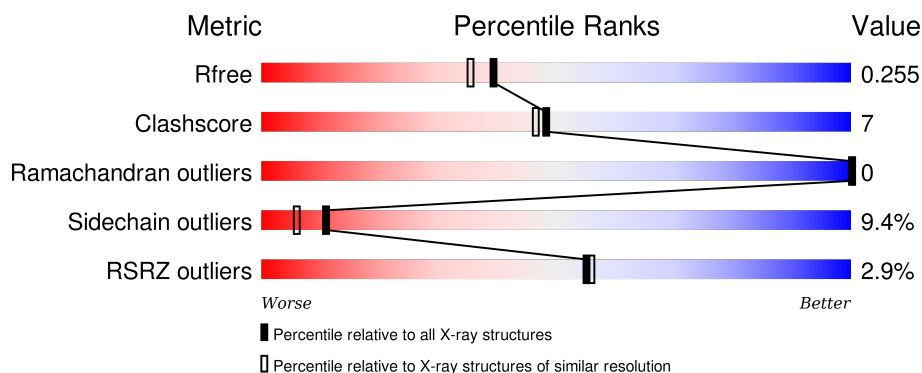
1 Overall quality at a glance

The following experimental techniques were used to determine the structure:

X-RAY DIFFRACTION

The reported resolution of this entry is 2.00 Å.

Percentile scores (ranging between 0-100) for global validation metrics of the entry are shown in the following graphic. The table shows the number of entries on which the scores are based.



Metric	Whole archive (#Entries)	Similar resolution (#Entries, resolution range(Å))
R_{free}	91344	6249 (2.00-2.00)
Clashscore	102246	7340 (2.00-2.00)
Ramachandran outliers	100387	7248 (2.00-2.00)
Sidechain outliers	100360	7247 (2.00-2.00)
RSRZ outliers	91569	6262 (2.00-2.00)

The table below summarises the geometric issues observed across the polymeric chains and their fit to the electron density. The red, orange, yellow and green segments on the lower bar indicate the fraction of residues that contain outliers for ≥ 3 , 2, 1 and 0 types of geometric quality criteria. A grey segment represents the fraction of residues that are not modelled. The numeric value for each fraction is indicated below the corresponding segment, with a dot representing fractions $\leq 5\%$. The upper red bar (where present) indicates the fraction of residues that have poor fit to the electron density. The numeric value is given above the bar.

Mol	Chain	Length	Quality of chain
1	A	184	
1	B	184	

2 Entry composition [i](#)

There are 4 unique types of molecules in this entry. The entry contains 2720 atoms, of which 0 are hydrogens and 0 are deuteriums.

In the tables below, the ZeroOcc column contains the number of atoms modelled with zero occupancy, the AltConf column contains the number of residues with at least one atom in alternate conformation and the Trace column contains the number of residues modelled with at most 2 atoms.

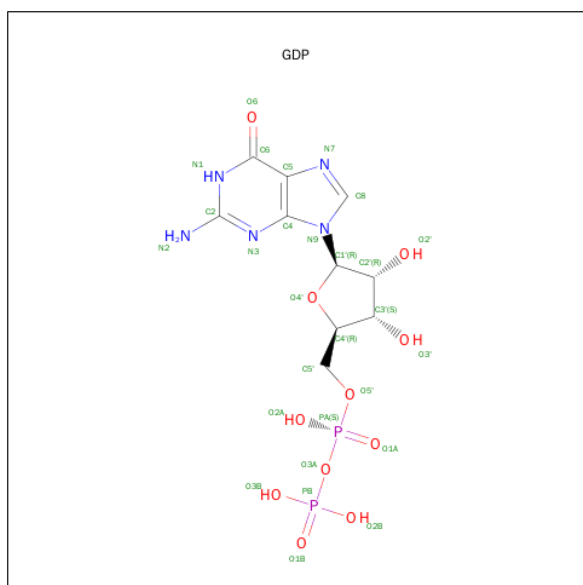
- Molecule 1 is a protein called Leucine-rich repeat kinase 2.

Mol	Chain	Residues	Atoms						ZeroOcc	AltConf	Trace
1	A	157	Total	C	N	O	S	Se	38	2	0
			1262	809	217	229	1	6			
1	B	162	Total	C	N	O	S	Se	27	0	0
			1287	823	222	235	1	6			

- Molecule 2 is MAGNESIUM ION (three-letter code: MG) (formula: Mg).

Mol	Chain	Residues	Atoms		ZeroOcc	AltConf
2	B	1	Total	Mg	0	0
			1	1		
2	A	1	Total	Mg	0	0
			1	1		

- Molecule 3 is GUANOSINE-5'-DIPHOSPHATE (three-letter code: GDP) (formula: $C_{10}H_{15}N_5O_{11}P_2$).



Mol	Chain	Residues	Atoms					ZeroOcc	AltConf
3	A	1	Total	C	N	O	P	0	0
			28	10	5	11	2		
3	B	1	Total	C	N	O	P	0	0
			28	10	5	11	2		

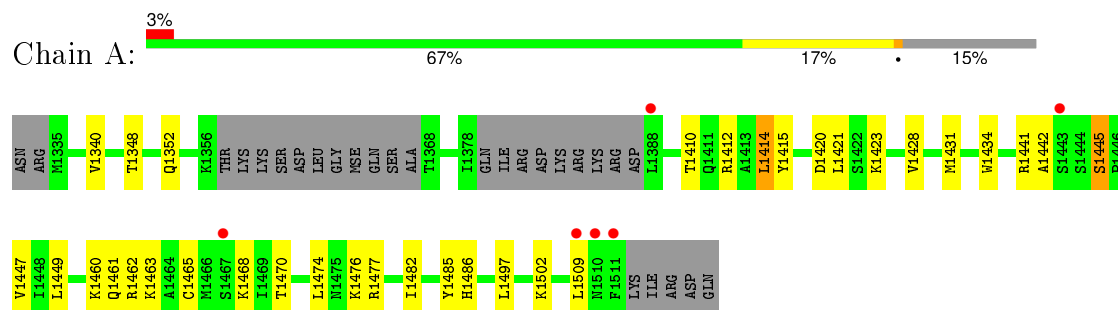
- Molecule 4 is water.

Mol	Chain	Residues	Atoms		ZeroOcc	AltConf
4	A	56	Total	O	0	1
			57	57		
4	B	56	Total	O	0	0
			56	56		

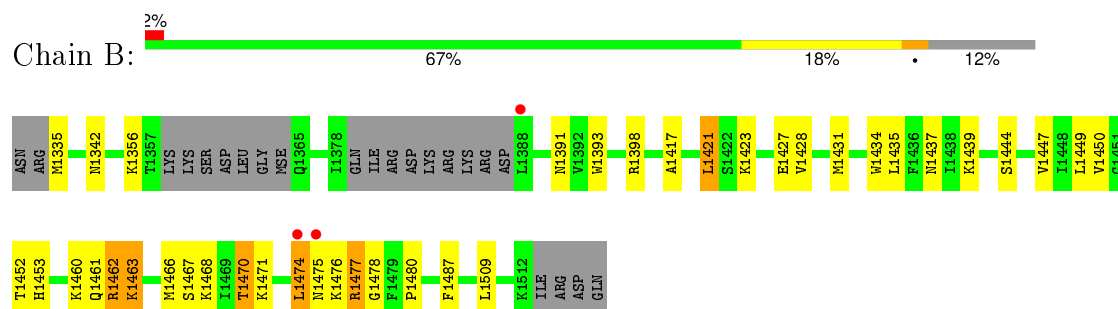
3 Residue-property plots

These plots are drawn for all protein, RNA and DNA chains in the entry. The first graphic for a chain summarises the proportions of errors displayed in the second graphic. The second graphic shows the sequence view annotated by issues in geometry and electron density. Residues are color-coded according to the number of geometric quality criteria for which they contain at least one outlier: green = 0, yellow = 1, orange = 2 and red = 3 or more. A red dot above a residue indicates a poor fit to the electron density ($RSRZ > 2$). Stretches of 2 or more consecutive residues without any outlier are shown as a green connector. Residues present in the sample, but not in the model, are shown in grey.

• Molecule 1: Leucine-rich repeat kinase 2



• Molecule 1: Leucine-rich repeat kinase 2



4 Data and refinement statistics

Property	Value	Source
Space group	P 1	Depositor
Cell constants a, b, c, α , β , γ	44.44Å 44.40Å 53.68Å 81.51° 69.00° 78.71°	Depositor
Resolution (Å)	38.80 – 2.00 38.80 – 1.99	Depositor EDS
% Data completeness (in resolution range)	93.1 (38.80-2.00) 90.3 (38.80-1.99)	Depositor EDS
R_{merge}	0.13	Depositor
R_{sym}	(Not available)	Depositor
$\langle I/\sigma(I) \rangle$ ¹	2.16 (at 2.00Å)	Xtriage
Refinement program	REFMAC 5.3.0037	Depositor
R, R_{free}	0.199 , 0.253 0.202 , 0.255	Depositor DCC
R_{free} test set	1194 reflections (5.34%)	DCC
Wilson B-factor (Å ²)	30.1	Xtriage
Anisotropy	0.497	Xtriage
Bulk solvent k_{sol} (e/Å ³), B_{sol} (Å ²)	0.34 , 49.5	EDS
Estimated twinning fraction	No twinning to report.	Xtriage
L-test for twinning ²	$\langle L \rangle = 0.50$, $\langle L^2 \rangle = 0.33$	Xtriage
Outliers	0 of 23596 reflections	Xtriage
F_o, F_c correlation	0.94	EDS
Total number of atoms	2720	wwPDB-VP
Average B, all atoms (Å ²)	34.0	wwPDB-VP

Xtriage's analysis on translational NCS is as follows: *The largest off-origin peak in the Patterson function is 9.08% of the height of the origin peak. No significant pseudotranslation is detected.*

¹Intensities estimated from amplitudes.

²Theoretical values of $\langle |L| \rangle$, $\langle L^2 \rangle$ for acentric reflections are 0.5, 0.375 respectively for untwinned datasets, and 0.333, 0.2 for perfectly twinned datasets.

5 Model quality

5.1 Standard geometry

Bond lengths and bond angles in the following residue types are not validated in this section: GDP, MG

The Z score for a bond length (or angle) is the number of standard deviations the observed value is removed from the expected value. A bond length (or angle) with $|Z| > 5$ is considered an outlier worth inspection. RMSZ is the root-mean-square of all Z scores of the bond lengths (or angles).

Mol	Chain	Bond lengths		Bond angles	
		RMSZ	$\# Z > 5$	RMSZ	$\# Z > 5$
1	A	0.84	2/1286 (0.2%)	0.83	2/1724 (0.1%)
1	B	0.89	1/1305 (0.1%)	0.85	1/1749 (0.1%)
All	All	0.86	3/2591 (0.1%)	0.84	3/3473 (0.1%)

Chiral center outliers are detected by calculating the chiral volume of a chiral center and verifying if the center is modelled as a planar moiety or with the opposite hand. A planarity outlier is detected by checking planarity of atoms in a peptide group, atoms in a mainchain group or atoms of a sidechain that are expected to be planar.

Mol	Chain	#Chirality outliers	#Planarity outliers
1	B	0	4

All (3) bond length outliers are listed below:

Mol	Chain	Res	Type	Atoms	Z	Observed(Å)	Ideal(Å)
1	A	1485	TYR	CD1-CE1	-5.24	1.31	1.39
1	B	1439	LYS	CD-CE	-5.10	1.38	1.51
1	A	1485	TYR	CD2-CE2	-5.02	1.31	1.39

All (3) bond angle outliers are listed below:

Mol	Chain	Res	Type	Atoms	Z	Observed(°)	Ideal(°)
1	A	1441	ARG	NE-CZ-NH1	-5.78	117.41	120.30
1	A	1449	LEU	CA-CB-CG	5.31	127.52	115.30
1	B	1435	LEU	CB-CG-CD1	5.25	119.93	111.00

There are no chirality outliers.

All (4) planarity outliers are listed below:

Mol	Chain	Res	Type	Group
1	B	1461	GLN	Peptide
1	B	1462	ARG	Peptide
1	B	1477	ARG	Peptide
1	B	1478	GLY	Peptide

5.2 Too-close contacts ⓘ

In the following table, the Non-H and H(model) columns list the number of non-hydrogen atoms and hydrogen atoms in the chain respectively. The H(added) column lists the number of hydrogen atoms added and optimized by MolProbity. The Clashes column lists the number of clashes within the asymmetric unit, whereas Symm-Clashes lists symmetry related clashes.

Mol	Chain	Non-H	H(model)	H(added)	Clashes	Symm-Clashes
1	A	1262	0	1289	20	0
1	B	1287	0	1313	19	0
2	A	1	0	0	0	0
2	B	1	0	0	0	0
3	A	28	0	12	0	0
3	B	28	0	12	0	0
4	A	57	0	0	1	0
4	B	56	0	0	1	0
All	All	2720	0	2626	37	0

The all-atom clashscore is defined as the number of clashes found per 1000 atoms (including hydrogen atoms). The all-atom clashscore for this structure is 7.

All (37) close contacts within the same asymmetric unit are listed below, sorted by their clash magnitude.

Atom-1	Atom-2	Interatomic distance (Å)	Clash overlap (Å)
1:B:1463:LYS:HE3	1:B:1466:MSE:HE2	1.38	1.03
1:B:1463:LYS:HE3	1:B:1466:MSE:CE	1.97	0.94
1:A:1486:HIS:HD2	4:A:32:HOH:O	1.78	0.67
1:A:1410:THR:O	1:A:1442:ALA:HB2	1.94	0.66
1:B:1470:THR:HA	1:B:1474:LEU:HD22	1.81	0.63
1:B:1452:THR:OG1	1:B:1453:HIS:HD2	1.84	0.60
1:A:1470:THR:HA	1:A:1474:LEU:HD22	1.83	0.60
1:A:1460:LYS:HE2	1:A:1461:GLN:HG3	1.86	0.57
1:A:1421:LEU:HD12	1:A:1465:CYS:SG	2.47	0.55
1:A:1460:LYS:HG3	1:A:1461:GLN:N	2.21	0.54
1:A:1421:LEU:CD1	1:A:1465:CYS:SG	2.96	0.53
1:A:1348:THR:O	1:A:1352[B]:GLN:HG2	2.08	0.53

Continued on next page...

Continued from previous page...

Atom-1	Atom-2	Interatomic distance (Å)	Clash overlap (Å)
1:B:1470:THR:HG22	1:B:1471:LYS:HG3	1.90	0.53
1:B:1421:LEU:HD22	1:B:1487:PHE:HD1	1.73	0.53
1:B:1398:ARG:NH2	4:B:1524:HOH:O	2.42	0.53
1:A:1420:ASP:OD2	1:A:1423:LYS:HE3	2.08	0.52
1:A:1420:ASP:OD2	1:A:1423:LYS:CE	2.57	0.52
1:B:1391:ASN:ND2	1:B:1393:TRP:HE1	2.07	0.52
1:A:1415:TYR:HB2	1:A:1447:VAL:HG22	1.93	0.51
1:B:1423:LYS:HB2	1:B:1427:GLU:CG	2.40	0.51
1:A:1431:MSE:HE2	1:A:1431:MSE:HA	1.95	0.48
1:A:1442:ALA:HB3	1:A:1445:SER:OG	2.14	0.48
1:B:1428:VAL:CG1	1:B:1468:LYS:HG2	2.44	0.47
1:B:1447:VAL:HG21	1:B:1480:PRO:HG2	1.97	0.47
1:A:1447:VAL:HB	1:A:1482:ILE:HG22	1.96	0.47
1:B:1428:VAL:HG11	1:B:1468:LYS:HG2	1.95	0.47
1:A:1420:ASP:OD2	1:A:1423:LYS:NZ	2.48	0.46
1:A:1474:LEU:HD12	1:A:1482:ILE:HD11	1.98	0.46
1:A:1434:TRP:HE1	1:B:1342:ASN:ND2	2.13	0.46
1:B:1463:LYS:HA	1:B:1463:LYS:CE	2.46	0.45
1:A:1414:LEU:HD12	1:A:1415:TYR:N	2.32	0.45
1:A:1340:VAL:HB	1:B:1434:TRP:CZ3	2.51	0.45
1:B:1417:ALA:HB3	1:B:1449:LEU:HD23	2.00	0.44
1:B:1475:ASN:C	1:B:1476:LYS:HG2	2.39	0.43
1:B:1423:LYS:HB2	1:B:1427:GLU:HG3	2.00	0.43
1:B:1463:LYS:HB3	1:B:1463:LYS:HE2	1.58	0.42
1:A:1428:VAL:O	1:A:1431:MSE:HB2	2.20	0.40

There are no symmetry-related clashes.

5.3 Torsion angles ⓘ

5.3.1 Protein backbone ⓘ

In the following table, the Percentiles column shows the percent Ramachandran outliers of the chain as a percentile score with respect to all X-ray entries followed by that with respect to entries of similar resolution.

The Analysed column shows the number of residues for which the backbone conformation was analysed, and the total number of residues.

Mol	Chain	Analysed	Favoured	Allowed	Outliers	Percentiles	
1	A	153/184 (83%)	149 (97%)	4 (3%)	0	100	100

Continued on next page...

Continued from previous page...

Mol	Chain	Analysed	Favoured	Allowed	Outliers	Percentiles	
1	B	156/184 (85%)	150 (96%)	6 (4%)	0	100	100
All	All	309/368 (84%)	299 (97%)	10 (3%)	0	100	100

There are no Ramachandran outliers to report.

5.3.2 Protein sidechains ⓘ

In the following table, the Percentiles column shows the percent sidechain outliers of the chain as a percentile score with respect to all X-ray entries followed by that with respect to entries of similar resolution.

The Analysed column shows the number of residues for which the sidechain conformation was analysed, and the total number of residues.

Mol	Chain	Analysed	Rotameric	Outliers	Percentiles	
1	A	139/155 (90%)	128 (92%)	11 (8%)	15	9
1	B	141/155 (91%)	126 (89%)	15 (11%)	8	4
All	All	280/310 (90%)	254 (91%)	26 (9%)	11	6

All (26) residues with a non-rotameric sidechain are listed below:

Mol	Chain	Res	Type
1	A	1412	ARG
1	A	1414	LEU
1	A	1445	SER
1	A	1462	ARG
1	A	1463	LYS
1	A	1468	LYS
1	A	1476	LYS
1	A	1477	ARG
1	A	1497	LEU
1	A	1502	LYS
1	A	1509	LEU
1	B	1335	MSE
1	B	1356	LYS
1	B	1421	LEU
1	B	1431	MSE
1	B	1437	ASN
1	B	1444	SER
1	B	1450	VAL

Continued on next page...

Continued from previous page...

Mol	Chain	Res	Type
1	B	1460	LYS
1	B	1462	ARG
1	B	1463	LYS
1	B	1467	SER
1	B	1470	THR
1	B	1474	LEU
1	B	1477	ARG
1	B	1509	LEU

Some sidechains can be flipped to improve hydrogen bonding and reduce clashes. All (4) such sidechains are listed below:

Mol	Chain	Res	Type
1	A	1486	HIS
1	B	1342	ASN
1	B	1391	ASN
1	B	1453	HIS

5.3.3 RNA [i](#)

There are no RNA molecules in this entry.

5.4 Non-standard residues in protein, DNA, RNA chains [i](#)

There are no non-standard protein/DNA/RNA residues in this entry.

5.5 Carbohydrates [i](#)

There are no carbohydrates in this entry.

5.6 Ligand geometry [i](#)

Of 4 ligands modelled in this entry, 2 are monoatomic - leaving 2 for Mogul analysis.

In the following table, the Counts columns list the number of bonds (or angles) for which Mogul statistics could be retrieved, the number of bonds (or angles) that are observed in the model and the number of bonds (or angles) that are defined in the chemical component dictionary. The Link column lists molecule types, if any, to which the group is linked. The Z score for a bond length (or angle) is the number of standard deviations the observed value is removed from the expected value. A bond length (or angle) with $|Z| > 2$ is considered an outlier worth inspection. RMSZ is the root-mean-square of all Z scores of the bond lengths (or angles).

Mol	Type	Chain	Res	Link	Bond lengths			Bond angles		
					Counts	RMSZ	# Z > 2	Counts	RMSZ	# Z > 2
3	GDP	A	1	2	23,30,30	1.24	2 (8%)	30,47,47	2.03	7 (23%)
3	GDP	B	2	2	23,30,30	1.33	4 (17%)	30,47,47	1.96	9 (30%)

In the following table, the Chirals column lists the number of chiral outliers, the number of chiral centers analysed, the number of these observed in the model and the number defined in the chemical component dictionary. Similar counts are reported in the Torsion and Rings columns. '-' means no outliers of that kind were identified.

Mol	Type	Chain	Res	Link	Chirals	Torsions	Rings
3	GDP	A	1	2	-	0/12/32/32	0/3/3/3
3	GDP	B	2	2	-	0/12/32/32	0/3/3/3

All (6) bond length outliers are listed below:

Mol	Chain	Res	Type	Atoms	Z	Observed(Å)	Ideal(Å)
3	B	2	GDP	C2-N2	2.11	1.38	1.34
3	B	2	GDP	C6-C5	2.47	1.46	1.41
3	B	2	GDP	C6-N1	2.74	1.38	1.33
3	A	1	GDP	C6-C5	3.17	1.47	1.41
3	B	2	GDP	C5-C4	3.40	1.48	1.40
3	A	1	GDP	C5-C4	3.47	1.48	1.40

All (16) bond angle outliers are listed below:

Mol	Chain	Res	Type	Atoms	Z	Observed(°)	Ideal(°)
3	A	1	GDP	C5-C6-N1	-4.68	117.19	123.59
3	B	2	GDP	C5-C6-N1	-4.07	118.02	123.59
3	A	1	GDP	C6-C5-C4	-3.91	116.22	120.90
3	B	2	GDP	C6-C5-C4	-3.79	116.36	120.90
3	A	1	GDP	N3-C2-N1	-3.15	122.65	127.44
3	A	1	GDP	O5'-PA-O1A	-3.03	97.85	109.62
3	B	2	GDP	C1'-N9-C4	-2.94	122.51	126.94
3	B	2	GDP	N3-C2-N1	-2.67	123.37	127.44
3	B	2	GDP	C4-C5-N7	-2.42	107.26	109.48
3	B	2	GDP	O3A-PA-O5'	-2.36	96.67	102.94
3	A	1	GDP	C2'-C1'-N9	-2.25	110.85	114.29
3	A	1	GDP	C1'-N9-C4	-2.20	123.62	126.94
3	B	2	GDP	N2-C2-N1	2.14	120.75	117.20
3	B	2	GDP	O2B-PB-O1B	3.15	120.71	110.58
3	B	2	GDP	C6-N1-C2	4.06	121.58	115.94
3	A	1	GDP	C6-N1-C2	5.42	123.47	115.94

There are no chirality outliers.

There are no torsion outliers.

There are no ring outliers.

No monomer is involved in short contacts.

5.7 Other polymers

There are no such residues in this entry.

5.8 Polymer linkage issues

There are no chain breaks in this entry.

6 Fit of model and data [i](#)

6.1 Protein, DNA and RNA chains [i](#)

In the following table, the column labelled ‘#RSRZ> 2’ contains the number (and percentage) of RSRZ outliers, followed by percent RSRZ outliers for the chain as percentile scores relative to all X-ray entries and entries of similar resolution. The OWAB column contains the minimum, median, 95th percentile and maximum values of the occupancy-weighted average B-factor per residue. The column labelled ‘Q< 0.9’ lists the number of (and percentage) of residues with an average occupancy less than 0.9.

Mol	Chain	Analysed	<RSRZ>	#RSRZ>2	OWAB(Å ²)	Q<0.9
1	A	151/184 (82%)	0.35	6 (3%) 42 44	22, 33, 46, 59	10 (6%)
1	B	156/184 (84%)	0.31	3 (1%) 70 70	22, 33, 45, 53	9 (5%)
All	All	307/368 (83%)	0.33	9 (2%) 55 56	22, 33, 46, 59	19 (6%)

All (9) RSRZ outliers are listed below:

Mol	Chain	Res	Type	RSRZ
1	B	1388	LEU	4.5
1	A	1509	LEU	3.8
1	A	1510	ASN	3.4
1	A	1443	SER	2.9
1	A	1511	PHE	2.9
1	B	1475	ASN	2.5
1	B	1474	LEU	2.4
1	A	1388	LEU	2.3
1	A	1467	SER	2.0

6.2 Non-standard residues in protein, DNA, RNA chains [i](#)

There are no non-standard protein/DNA/RNA residues in this entry.

6.3 Carbohydrates [i](#)

There are no carbohydrates in this entry.

6.4 Ligands [i](#)

In the following table, the Atoms column lists the number of modelled atoms in the group and the number defined in the chemical component dictionary. LLDF column lists the quality of electron

density of the group with respect to its neighbouring residues in protein, DNA or RNA chains. The B-factors column lists the minimum, median, 95th percentile and maximum values of B factors of atoms in the group. The column labelled 'Q< 0.9' lists the number of atoms with occupancy less than 0.9.

Mol	Type	Chain	Res	Atoms	RSCC	RSR	LLDF	B-factors(Å ²)	Q<0.9
3	GDP	A	1	28/28	0.98	0.07	-2.69	17,24,26,28	0
3	GDP	B	2	28/28	0.99	0.06	-2.73	17,22,24,26	0
2	MG	A	2	1/1	0.98	0.03	-	26,26,26,26	0
2	MG	B	1	1/1	0.99	0.09	-	25,25,25,25	0

6.5 Other polymers

There are no such residues in this entry.