



# wwPDB X-ray Structure Validation Summary Report ⓘ

Feb 19, 2016 – 08:58 PM GMT

PDB ID : 4ZG9  
Title : Structural basis for inhibition of human autotaxin by four novel compounds  
Authors : Stein, A.J.; Bain, G.; Hutchinson, J.H.; Evans, J.F.  
Deposited on : 2015-04-22  
Resolution : 2.95 Å(reported)

This is a wwPDB X-ray Structure Validation Summary Report for a publicly released PDB entry.  
We welcome your comments at [validation@mail.wwpdb.org](mailto:validation@mail.wwpdb.org)  
A user guide is available at  
<http://wwpdb.org/validation/2016/XrayValidationReportHelp>  
with specific help available everywhere you see the ⓘ symbol.

---

The following versions of software and data (see [references ⓘ](#)) were used in the production of this report:

MolProbity : 4.02b-467  
Mogul : 1.7.1 (RC1), CSD as537be (2016)  
Xtriage (Phenix) : 1.9-1692  
EDS : rb-20026982  
Percentile statistics : 20151230.v01 (using entries in the PDB archive December 30th 2015)  
Refmac : 5.8.0135  
CCP4 : 6.5.0  
Ideal geometry (proteins) : Engh & Huber (2001)  
Ideal geometry (DNA, RNA) : Parkinson et al. (1996)  
Validation Pipeline (wwPDB-VP) : rb-20026982

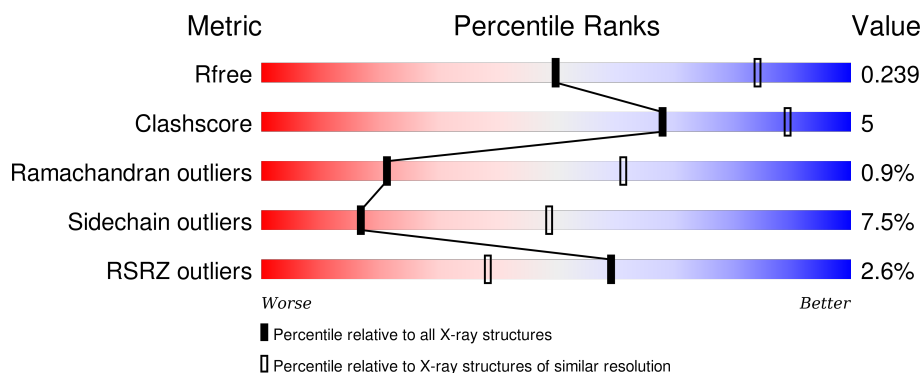
# 1 Overall quality at a glance

The following experimental techniques were used to determine the structure:

## *X-RAY DIFFRACTION*

The reported resolution of this entry is 2.95 Å.

Percentile scores (ranging between 0-100) for global validation metrics of the entry are shown in the following graphic. The table shows the number of entries on which the scores are based.



Metric	Whole archive (#Entries)	Similar resolution (#Entries, resolution range(Å))
$R_{free}$	91344	2184 (3.00-2.92)
Clashscore	102246	2552 (3.00-2.92)
Ramachandran outliers	100387	2468 (3.00-2.92)
Sidechain outliers	100360	2471 (3.00-2.92)
RSRZ outliers	91569	2201 (3.00-2.92)

The table below summarises the geometric issues observed across the polymeric chains and their fit to the electron density. The red, orange, yellow and green segments on the lower bar indicate the fraction of residues that contain outliers for  $\geq 3$ , 2, 1 and 0 types of geometric quality criteria. A grey segment represents the fraction of residues that are not modelled. The numeric value for each fraction is indicated below the corresponding segment, with a dot representing fractions  $\leq 5\%$ . The upper red bar (where present) indicates the fraction of residues that have poor fit to the electron density. The numeric value is given above the bar.

Mol	Chain	Length	Quality of chain
1	A	863	
1	B	863	

The following table lists non-polymeric compounds, carbohydrate monomers and non-standard residues in protein, DNA, RNA chains that are outliers for geometric or electron-density-fit criteria:

Mol	Type	Chain	Res	Chirality	Geometry	Clashes	Electron density
6	4O2	A	909	-	-	-	X

## 2 Entry composition [i](#)

There are 9 unique types of molecules in this entry. The entry contains 12241 atoms, of which 0 are hydrogens and 0 are deuteriums.

In the tables below, the ZeroOcc column contains the number of atoms modelled with zero occupancy, the AltConf column contains the number of residues with at least one atom in alternate conformation and the Trace column contains the number of residues modelled with at most 2 atoms.

- Molecule 1 is a protein called Ectonucleotide pyrophosphatase/phosphodiesterase family member 2.

Mol	Chain	Residues	Atoms					ZeroOcc	AltConf	Trace
1	A	750	Total	C	N	O	S	0	2	0
			5932	3783	1010	1093	46			
1	B	764	Total	C	N	O	S	0	0	0
			6045	3851	1029	1118	47			

- Molecule 2 is N-ACETYL-D-GLUCOSAMINE (three-letter code: NAG) (formula:  $C_8H_{15}NO_6$ ).



Mol	Chain	Residues	Atoms				ZeroOcc	AltConf
2	A	1	Total	C	N	O	0	0
			14	8	1	5		
2	A	1	Total	C	N	O	0	0
			14	8	1	5		
2	B	1	Total	C	N	O	0	0
			14	8	1	5		
2	B	1	Total	C	N	O	0	0
			14	8	1	5		

- Molecule 3 is ZINC ION (three-letter code: ZN) (formula: Zn).

Mol	Chain	Residues	Atoms		ZeroOcc	AltConf
3	B	2	Total	Zn	0	0
			2	2		
3	A	2	Total	Zn	0	0
			2	2		

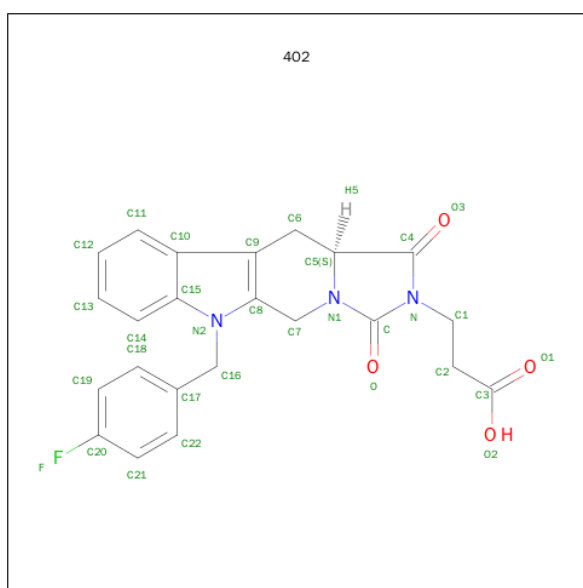
- Molecule 4 is CALCIUM ION (three-letter code: CA) (formula: Ca).

Mol	Chain	Residues	Atoms		ZeroOcc	AltConf
4	B	1	Total	Ca	0	0
			1	1		
4	A	1	Total	Ca	0	0
			1	1		

- Molecule 5 is SODIUM ION (three-letter code: NA) (formula: Na).

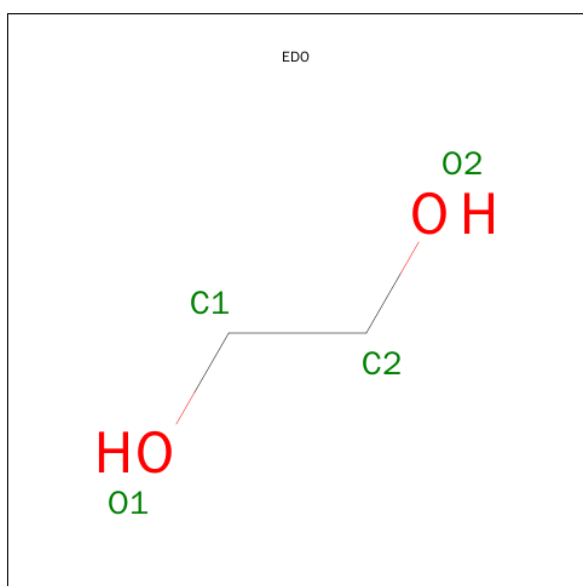
Mol	Chain	Residues	Atoms		ZeroOcc	AltConf
5	B	2	Total	Na	0	0
			2	2		
5	A	2	Total	Na	0	0
			2	2		

- Molecule 6 is 3-[(11aS)-6-(4-fluorobenzyl)-1,3-dioxo-5,6,11,11a-tetrahydro-1H-imidazo[1',5':1,6]pyrido[3,4-b]indol-2(3H)-yl]propanoic acid (three-letter code: 4O2) (formula: C<sub>23</sub>H<sub>20</sub>FN<sub>3</sub>O<sub>4</sub>).



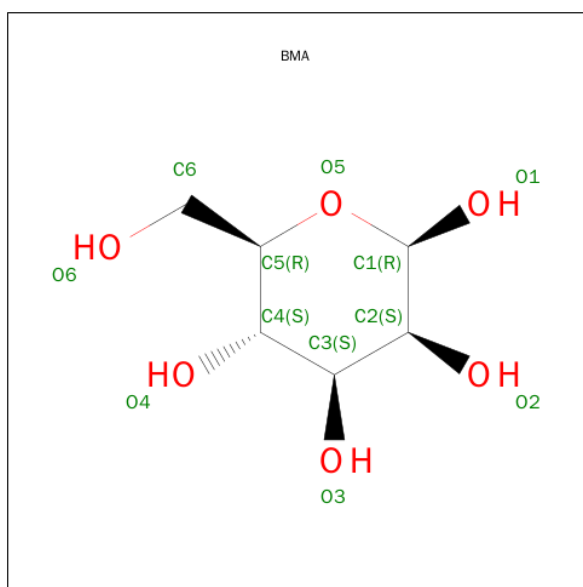
Mol	Chain	Residues	Atoms					ZeroOcc	AltConf
6	A	1	Total	C	F	N	O	0	0
			31	23	1	3	4		
6	A	1	Total	C	F	N	O	0	0
			31	23	1	3	4		
6	B	1	Total	C	F	N	O	0	0
			31	23	1	3	4		
6	B	1	Total	C	F	N	O	0	0
			31	23	1	3	4		

- Molecule 7 is 1,2-ETHANEDIOL (three-letter code: EDO) (formula: C<sub>2</sub>H<sub>6</sub>O<sub>2</sub>).



Mol	Chain	Residues	Atoms			ZeroOcc	AltConf
7	A	1	Total	C	O	0	0
			4	2	2		
7	A	1	Total	C	O	0	0
			4	2	2		
7	B	1	Total	C	O	0	0
			4	2	2		

- Molecule 8 is BETA-D-MANNOSE (three-letter code: BMA) (formula: C<sub>6</sub>H<sub>12</sub>O<sub>6</sub>).



Mol	Chain	Residues	Atoms			ZeroOcc	AltConf
8	B	1	Total	C	O	0	0
			11	6	5		

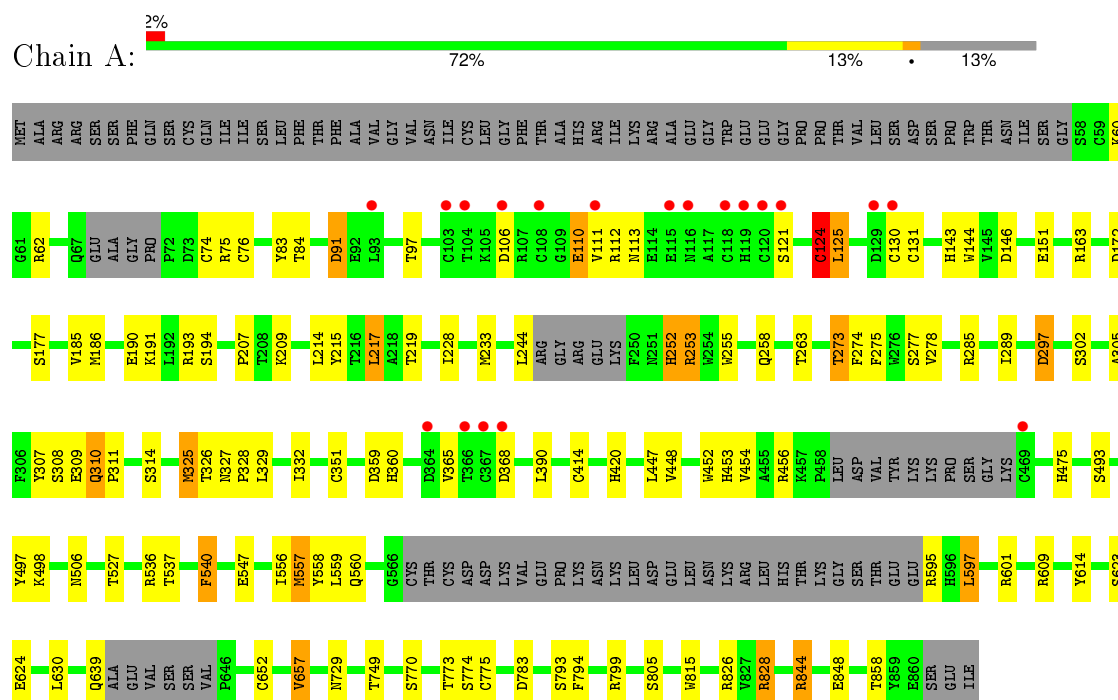
- Molecule 9 is water.

Mol	Chain	Residues	Atoms		ZeroOcc	AltConf
9	A	19	Total	O	0	0
			19	19		
9	B	32	Total	O	0	0
			32	32		

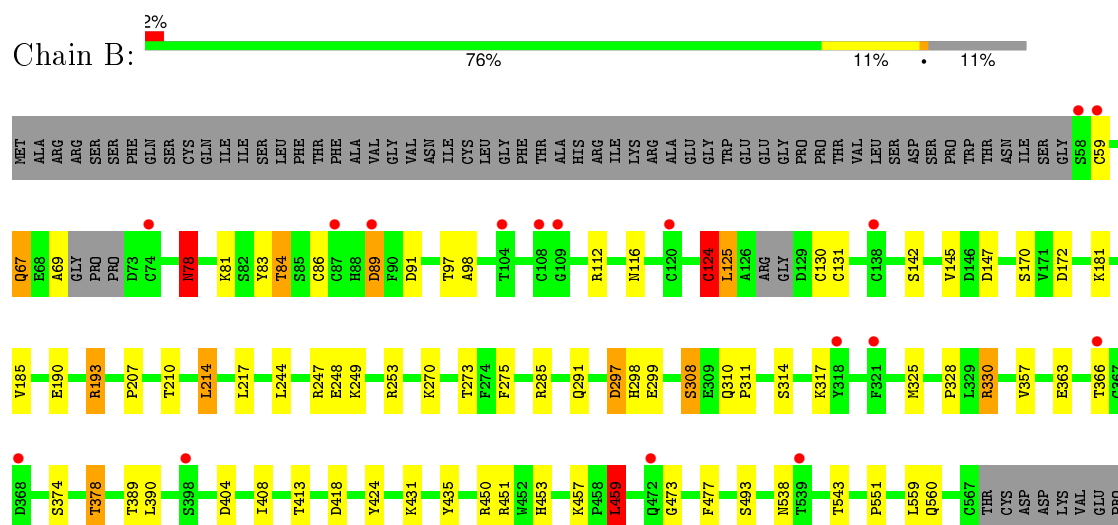
### 3 Residue-property plots

These plots are drawn for all protein, RNA and DNA chains in the entry. The first graphic for a chain summarises the proportions of errors displayed in the second graphic. The second graphic shows the sequence view annotated by issues in geometry and electron density. Residues are color-coded according to the number of geometric quality criteria for which they contain at least one outlier: green = 0, yellow = 1, orange = 2 and red = 3 or more. A red dot above a residue indicates a poor fit to the electron density ( $RSRZ > 2$ ). Stretches of 2 or more consecutive residues without any outlier are shown as a green connector. Residues present in the sample, but not in the model, are shown in grey.

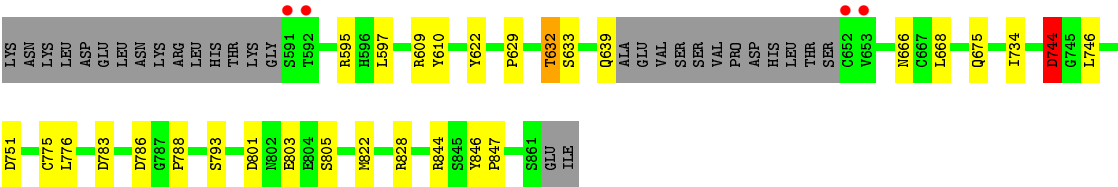
- Molecule 1: Ectonucleotide pyrophosphatase/phosphodiesterase family member 2



- Molecule 1: Ectonucleotide pyrophosphatase/phosphodiesterase family member 2







## 4 Data and refinement statistics

Property	Value	Source
Space group	C 2 2 21	Depositor
Cell constants a, b, c, $\alpha$ , $\beta$ , $\gamma$	127.46Å 209.99Å 188.19Å 90.00° 90.00° 90.00°	Depositor
Resolution (Å)	43.86 – 2.95 43.86 – 2.92	Depositor EDS
% Data completeness (in resolution range)	97.8 (43.86-2.95) 97.9 (43.86-2.92)	Depositor EDS
$R_{merge}$	0.16	Depositor
$R_{sym}$	(Not available)	Depositor
$\langle I/\sigma(I) \rangle$ <sup>1</sup>	1.40 (at 2.90Å)	Xtriage
Refinement program	REFMAC	Depositor
R, $R_{free}$	0.179 , 0.244 0.181 , 0.239	Depositor DCC
$R_{free}$ test set	2699 reflections (5.36%)	DCC
Wilson B-factor (Å <sup>2</sup> )	62.0	Xtriage
Anisotropy	0.102	Xtriage
Bulk solvent $k_{sol}$ (e/Å <sup>3</sup> ), $B_{sol}$ (Å <sup>2</sup> )	0.31 , 40.4	EDS
Estimated twinning fraction	0.009 for 1/2*h-1/2*k,-3/2*h-1/2*k,-l 0.016 for 1/2*h+1/2*k,3/2*h-1/2*k,-l	Xtriage
L-test for twinning <sup>2</sup>	$\langle  L  \rangle = 0.49$ , $\langle L^2 \rangle = 0.33$	Xtriage
Outliers	0 of 53945 reflections	Xtriage
$F_o, F_c$ correlation	0.94	EDS
Total number of atoms	12241	wwPDB-VP
Average B, all atoms (Å <sup>2</sup> )	61.0	wwPDB-VP

Xtriage's analysis on translational NCS is as follows: *The largest off-origin peak in the Patterson function is 2.68% of the height of the origin peak. No significant pseudotranslation is detected.*

<sup>1</sup>Intensities estimated from amplitudes.

<sup>2</sup>Theoretical values of  $\langle |L| \rangle$ ,  $\langle L^2 \rangle$  for acentric reflections are 0.5, 0.375 respectively for untwinned datasets, and 0.333, 0.2 for perfectly twinned datasets.

## 5 Model quality [i](#)

### 5.1 Standard geometry [i](#)

Bond lengths and bond angles in the following residue types are not validated in this section: ZN, BMA, NAG, 4O2, NA, CA, EDO

The Z score for a bond length (or angle) is the number of standard deviations the observed value is removed from the expected value. A bond length (or angle) with  $|Z| > 5$  is considered an outlier worth inspection. RMSZ is the root-mean-square of all Z scores of the bond lengths (or angles).

Mol	Chain	Bond lengths		Bond angles	
		RMSZ	$\# Z  > 5$	RMSZ	$\# Z  > 5$
1	A	0.57	0/6113	0.75	2/8323 (0.0%)
1	B	0.58	0/6218	0.75	3/8456 (0.0%)
All	All	0.57	0/12331	0.75	5/16779 (0.0%)

Chiral center outliers are detected by calculating the chiral volume of a chiral center and verifying if the center is modelled as a planar moiety or with the opposite hand. A planarity outlier is detected by checking planarity of atoms in a peptide group, atoms in a mainchain group or atoms of a sidechain that are expected to be planar.

Mol	Chain	#Chirality outliers	#Planarity outliers
1	B	0	1

There are no bond length outliers.

All (5) bond angle outliers are listed below:

Mol	Chain	Res	Type	Atoms	Z	Observed( $^{\circ}$ )	Ideal( $^{\circ}$ )
1	B	459	LEU	CA-CB-CG	5.81	128.66	115.30
1	B	744	ASP	CB-CA-C	-5.10	100.19	110.40
1	A	325	MET	CG-SD-CE	-5.09	92.06	100.20
1	A	826	ARG	NE-CZ-NH2	-5.07	117.76	120.30
1	B	744	ASP	CB-CG-OD2	-5.00	113.80	118.30

There are no chirality outliers.

All (1) planarity outliers are listed below:

Mol	Chain	Res	Type	Group
1	B	424	TYR	Peptide

## 5.2 Too-close contacts ⓘ

In the following table, the Non-H and H(model) columns list the number of non-hydrogen atoms and hydrogen atoms in the chain respectively. The H(added) column lists the number of hydrogen atoms added and optimized by MolProbity. The Clashes column lists the number of clashes within the asymmetric unit, whereas Symm-Clashes lists symmetry related clashes.

Mol	Chain	Non-H	H(model)	H(added)	Clashes	Symm-Clashes
1	A	5932	0	5534	58	0
1	B	6045	0	5674	49	0
2	A	28	0	25	0	0
2	B	28	0	24	0	0
3	A	2	0	0	0	0
3	B	2	0	0	0	0
4	A	1	0	0	0	0
4	B	1	0	0	0	0
5	A	2	0	0	0	0
5	B	2	0	0	0	0
6	A	62	0	38	4	0
6	B	62	0	38	4	0
7	A	8	0	12	0	0
7	B	4	0	5	0	0
8	B	11	0	10	0	0
9	A	19	0	0	1	0
9	B	32	0	0	1	0
All	All	12241	0	11360	111	0

The all-atom clashscore is defined as the number of clashes found per 1000 atoms (including hydrogen atoms). The all-atom clashscore for this structure is 5.

The worst 5 of 111 close contacts within the same asymmetric unit are listed below, sorted by their clash magnitude.

Atom-1	Atom-2	Interatomic distance (Å)	Clash overlap (Å)
1:B:124:CYS:SG	1:B:125:LEU:N	2.53	0.82
6:A:909:4O2:H9	6:A:909:4O2:H15	1.67	0.77
1:A:121:SER:O	1:A:124:CYS:HB3	1.85	0.77
1:B:639:GLN:N	1:B:639:GLN:OE1	2.19	0.75
1:B:83:TYR:OH	1:B:249:LYS:HG2	1.90	0.72

There are no symmetry-related clashes.

## 5.3 Torsion angles

### 5.3.1 Protein backbone

In the following table, the Percentiles column shows the percent Ramachandran outliers of the chain as a percentile score with respect to all X-ray entries followed by that with respect to entries of similar resolution.

The Analysed column shows the number of residues for which the backbone conformation was analysed, and the total number of residues.

Mol	Chain	Analysed	Favoured	Allowed	Outliers	Percentiles	
1	A	740/863 (86%)	682 (92%)	52 (7%)	6 (1%)	24	64
1	B	754/863 (87%)	695 (92%)	52 (7%)	7 (1%)	21	61
All	All	1494/1726 (87%)	1377 (92%)	104 (7%)	13 (1%)	21	61

5 of 13 Ramachandran outliers are listed below:

Mol	Chain	Res	Type
1	A	60	LYS
1	A	124	CYS
1	B	78	ASN
1	A	414	CYS
1	B	124	CYS

### 5.3.2 Protein sidechains

In the following table, the Percentiles column shows the percent sidechain outliers of the chain as a percentile score with respect to all X-ray entries followed by that with respect to entries of similar resolution.

The Analysed column shows the number of residues for which the sidechain conformation was analysed, and the total number of residues.

Mol	Chain	Analysed	Rotameric	Outliers	Percentiles	
1	A	642/780 (82%)	593 (92%)	49 (8%)	16	48
1	B	656/780 (84%)	607 (92%)	49 (8%)	17	49
All	All	1298/1560 (83%)	1200 (92%)	98 (8%)	17	48

5 of 98 residues with a non-rotameric sidechain are listed below:

Mol	Chain	Res	Type
1	A	799	ARG

*Continued on next page...*

*Continued from previous page...*

Mol	Chain	Res	Type
1	B	124	CYS
1	B	775	CYS
1	A	805	SER
1	B	59	CYS

Some sidechains can be flipped to improve hydrogen bonding and reduce clashes. 5 of 8 such sidechains are listed below:

Mol	Chain	Res	Type
1	A	453	HIS
1	B	538	ASN
1	B	67	GLN
1	A	434	HIS
1	A	732	ASN

### 5.3.3 RNA ⓘ

There are no RNA molecules in this entry.

## 5.4 Non-standard residues in protein, DNA, RNA chains ⓘ

There are no non-standard protein/DNA/RNA residues in this entry.

## 5.5 Carbohydrates ⓘ

There are no carbohydrates in this entry.

## 5.6 Ligand geometry ⓘ

Of 22 ligands modelled in this entry, 10 are monoatomic - leaving 12 for Mogul analysis.

In the following table, the Counts columns list the number of bonds (or angles) for which Mogul statistics could be retrieved, the number of bonds (or angles) that are observed in the model and the number of bonds (or angles) that are defined in the chemical component dictionary. The Link column lists molecule types, if any, to which the group is linked. The Z score for a bond length (or angle) is the number of standard deviations the observed value is removed from the expected value. A bond length (or angle) with  $|Z| > 2$  is considered an outlier worth inspection. RMSZ is the root-mean-square of all Z scores of the bond lengths (or angles).

Mol	Type	Chain	Res	Link	Bond lengths			Bond angles		
					Counts	RMSZ	# Z  > 2	Counts	RMSZ	# Z  > 2
2	NAG	A	901	1,2	14,14,15	0.67	0	15,19,21	1.62	3 (20%)
2	NAG	A	902	2	14,14,15	0.43	0	15,19,21	1.32	2 (13%)
6	4O2	A	908	-	29,35,35	2.05	7 (24%)	32,52,52	3.95	9 (28%)
6	4O2	A	909	-	29,35,35	2.23	6 (20%)	32,52,52	4.06	13 (40%)
7	EDO	A	910	3	3,3,3	0.57	0	2,2,2	0.48	0
7	EDO	A	911	-	3,3,3	0.61	0	2,2,2	0.39	0
2	NAG	B	901	1,2	14,14,15	0.74	1 (7%)	15,19,21	1.26	2 (13%)
2	NAG	B	902	8,2	14,14,15	0.92	1 (7%)	15,19,21	1.93	5 (33%)
8	BMA	B	903	2	11,11,12	1.13	1 (9%)	15,15,17	1.83	2 (13%)
6	4O2	B	909	-	29,35,35	2.40	12 (41%)	32,52,52	4.57	9 (28%)
6	4O2	B	910	-	29,35,35	2.31	13 (44%)	32,52,52	4.60	8 (25%)
7	EDO	B	911	3	3,3,3	0.72	0	2,2,2	0.28	0

In the following table, the Chirals column lists the number of chiral outliers, the number of chiral centers analysed, the number of these observed in the model and the number defined in the chemical component dictionary. Similar counts are reported in the Torsion and Rings columns. '-' means no outliers of that kind were identified.

Mol	Type	Chain	Res	Link	Chirals	Torsions	Rings
2	NAG	A	901	1,2	-	0/6/23/26	0/1/1/1
2	NAG	A	902	2	-	0/6/23/26	0/1/1/1
6	4O2	A	908	-	-	0/7/37/37	0/5/5/5
6	4O2	A	909	-	-	0/7/37/37	0/5/5/5
7	EDO	A	910	3	-	0/1/1/1	0/0/0/0
7	EDO	A	911	-	-	0/1/1/1	0/0/0/0
2	NAG	B	901	1,2	-	0/6/23/26	0/1/1/1
2	NAG	B	902	8,2	-	0/6/23/26	0/1/1/1
8	BMA	B	903	2	-	0/2/19/22	0/1/1/1
6	4O2	B	909	-	-	0/7/37/37	0/5/5/5
6	4O2	B	910	-	-	0/7/37/37	0/5/5/5
7	EDO	B	911	3	-	0/1/1/1	0/0/0/0

The worst 5 of 41 bond length outliers are listed below:

Mol	Chain	Res	Type	Atoms	Z	Observed(Å)	Ideal(Å)
6	B	910	4O2	C4-N	-5.32	1.31	1.38
6	B	909	4O2	C4-N	-5.14	1.31	1.38
6	A	909	4O2	C5-C4	-5.10	1.45	1.52
6	B	909	4O2	C-N	-4.98	1.30	1.39
6	B	909	4O2	C5-C4	-4.79	1.45	1.52

The worst 5 of 53 bond angle outliers are listed below:

Mol	Chain	Res	Type	Atoms	Z	Observed(°)	Ideal(°)
6	B	909	4O2	C4-N-C	-19.71	99.06	111.75
6	A	908	4O2	C4-N-C	-18.21	100.02	111.75
6	B	910	4O2	C4-N-C	-18.12	100.08	111.75
6	A	909	4O2	C4-N-C	-17.64	100.39	111.75
6	B	910	4O2	C4-C5-N1	-12.31	88.85	101.62

There are no chirality outliers.

There are no torsion outliers.

There are no ring outliers.

4 monomers are involved in 8 short contacts:

Mol	Chain	Res	Type	Clashes	Symm-Clashes
6	A	908	4O2	1	0
6	A	909	4O2	3	0
6	B	909	4O2	3	0
6	B	910	4O2	1	0

## 5.7 Other polymers [i](#)

There are no such residues in this entry.

## 5.8 Polymer linkage issues [i](#)

There are no chain breaks in this entry.



## 6 Fit of model and data [i](#)

### 6.1 Protein, DNA and RNA chains [i](#)

In the following table, the column labelled ‘#RSRZ> 2’ contains the number (and percentage) of RSRZ outliers, followed by percent RSRZ outliers for the chain as percentile scores relative to all X-ray entries and entries of similar resolution. The OWAB column contains the minimum, median, 95<sup>th</sup> percentile and maximum values of the occupancy-weighted average B-factor per residue. The column labelled ‘Q< 0.9’ lists the number of (and percentage) of residues with an average occupancy less than 0.9.

Mol	Chain	Analysed	<RSRZ>	#RSRZ>2	OWAB(Å <sup>2</sup> )	Q<0.9
1	A	750/863 (86%)	-0.15	19 (2%) 61 39	35, 56, 104, 135	0
1	B	764/863 (88%)	-0.17	21 (2%) 58 37	35, 57, 102, 124	0
All	All	1514/1726 (87%)	-0.16	40 (2%) 59 38	35, 57, 102, 135	0

The worst 5 of 40 RSRZ outliers are listed below:

Mol	Chain	Res	Type	RSRZ
1	A	120	CYS	4.4
1	B	539	THR	4.1
1	A	93	LEU	4.0
1	B	59	CYS	3.7
1	A	469	CYS	3.7

### 6.2 Non-standard residues in protein, DNA, RNA chains [i](#)

There are no non-standard protein/DNA/RNA residues in this entry.

### 6.3 Carbohydrates [i](#)

There are no carbohydrates in this entry.

### 6.4 Ligands [i](#)

In the following table, the Atoms column lists the number of modelled atoms in the group and the number defined in the chemical component dictionary. LLDF column lists the quality of electron density of the group with respect to its neighbouring residues in protein, DNA or RNA chains. The B-factors column lists the minimum, median, 95<sup>th</sup> percentile and maximum values of B factors of atoms in the group. The column labelled ‘Q< 0.9’ lists the number of atoms with occupancy less than 0.9.

Mol	Type	Chain	Res	Atoms	RSCC	RSR	LLDF	B-factors( $\text{\AA}^2$ )	Q<0.9
6	4O2	A	909	31/31	0.92	0.29	2.50	53,70,99,108	0
7	EDO	A	910	4/4	0.97	0.19	1.70	48,53,55,59	0
6	4O2	B	910	31/31	0.94	0.20	0.62	50,58,87,88	0
7	EDO	B	911	4/4	0.97	0.21	0.24	46,55,61,62	0
2	NAG	A	901	14/15	0.96	0.17	-0.09	44,47,53,58	0
6	4O2	A	908	31/31	0.97	0.17	-0.19	37,41,54,64	0
6	4O2	B	909	31/31	0.97	0.16	-0.27	42,46,69,74	0
7	EDO	A	911	4/4	0.98	0.15	-0.29	44,46,48,49	0
2	NAG	B	901	14/15	0.97	0.13	-0.61	42,47,52,59	0
5	NA	A	907	1/1	0.96	0.13	-0.89	50,50,50,50	0
4	CA	A	905	1/1	0.98	0.11	-1.02	58,58,58,58	0
4	CA	B	906	1/1	0.99	0.12	-1.07	45,45,45,45	0
5	NA	B	907	1/1	0.96	0.11	-1.47	56,56,56,56	0
3	ZN	B	905	1/1	0.98	0.13	-1.83	93,93,93,93	0
5	NA	A	906	1/1	0.92	0.10	-2.00	72,72,72,72	0
3	ZN	A	903	1/1	1.00	0.10	-2.03	46,46,46,46	0
5	NA	B	908	1/1	0.96	0.07	-2.49	56,56,56,56	0
3	ZN	B	904	1/1	0.98	0.10	-2.63	57,57,57,57	0
3	ZN	A	904	1/1	0.97	0.06	-3.86	99,99,99,99	0
2	NAG	B	902	14/15	0.95	0.14	-	51,58,72,80	0
2	NAG	A	902	14/15	0.96	0.26	-	51,58,72,74	0
8	BMA	B	903	11/12	0.83	0.20	-	83,91,97,101	0

## 6.5 Other polymers ⓘ

There are no such residues in this entry.