



Full wwPDB X-ray Structure Validation Report ⓘ

Apr 24, 2016 – 11:06 PM EDT

PDB ID : 4ZL1
Title : Crystal structure of human dihydroorotate dehydrogenase (DHODH) with 18X at 1.86 Å resolution
Authors : Huang, J.; Wu, D.; Ouyang, P.; Lu, W.; Pu, J.
Deposited on : 2015-05-01
Resolution : 1.86 Å(reported)

This is a Full wwPDB X-ray Structure Validation Report for a publicly released PDB entry.
We welcome your comments at validation@mail.wwpdb.org
A user guide is available at
<http://wwpdb.org/validation/2016/XrayValidationReportHelp>
with specific help available everywhere you see the ⓘ symbol.

The following versions of software and data (see [references ⓘ](#)) were used in the production of this report:

MolProbity : 4.02b-467
Mogul : 1.7.1 (RC1), CSD as537be (2016)
Xtriage (Phenix) : 1.9-1692
EDS : rb-20027257
Percentile statistics : 20151230.v01 (using entries in the PDB archive December 30th 2015)
Refmac : 5.8.0135
CCP4 : 6.5.0
Ideal geometry (proteins) : Engh & Huber (2001)
Ideal geometry (DNA, RNA) : Parkinson et al. (1996)
Validation Pipeline (wwPDB-VP) : rb-20027257

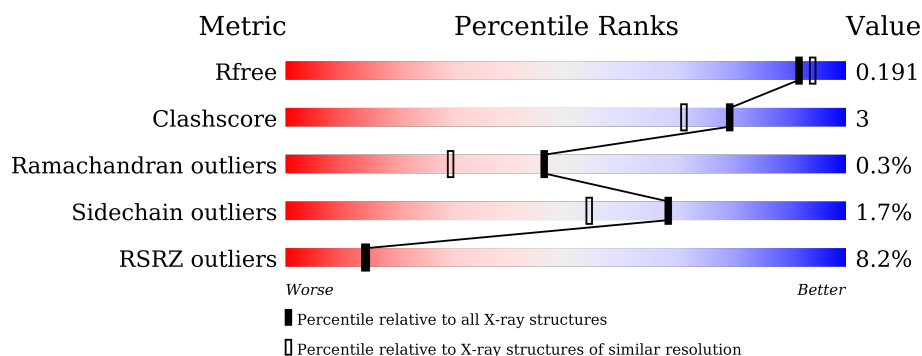
1 Overall quality at a glance

The following experimental techniques were used to determine the structure:

X-RAY DIFFRACTION

The reported resolution of this entry is 1.86 Å.

Percentile scores (ranging between 0-100) for global validation metrics of the entry are shown in the following graphic. The table shows the number of entries on which the scores are based.



Metric	Whole archive (#Entries)	Similar resolution (#Entries, resolution range(Å))
R_{free}	91344	1745 (1.86-1.86)
Clashscore	102246	1898 (1.86-1.86)
Ramachandran outliers	100387	1875 (1.86-1.86)
Sidechain outliers	100360	1875 (1.86-1.86)
RSRZ outliers	91569	1747 (1.86-1.86)

The table below summarises the geometric issues observed across the polymeric chains and their fit to the electron density. The red, orange, yellow and green segments on the lower bar indicate the fraction of residues that contain outliers for ≥ 3 , 2, 1 and 0 types of geometric quality criteria. A grey segment represents the fraction of residues that are not modelled. The numeric value for each fraction is indicated below the corresponding segment, with a dot representing fractions $\leq 5\%$. The upper red bar (where present) indicates the fraction of residues that have poor fit to the electron density. The numeric value is given above the bar.

Mol	Chain	Length	Quality of chain
1	A	390	<div> <div>8%</div> <div>83%</div> <div>9% • 6%</div> </div>

2 Entry composition

There are 6 unique types of molecules in this entry. The entry contains 3102 atoms, of which 0 are hydrogens and 0 are deuteriums.

In the tables below, the ZeroOcc column contains the number of atoms modelled with zero occupancy, the AltConf column contains the number of residues with at least one atom in alternate conformation and the Trace column contains the number of residues modelled with at most 2 atoms.

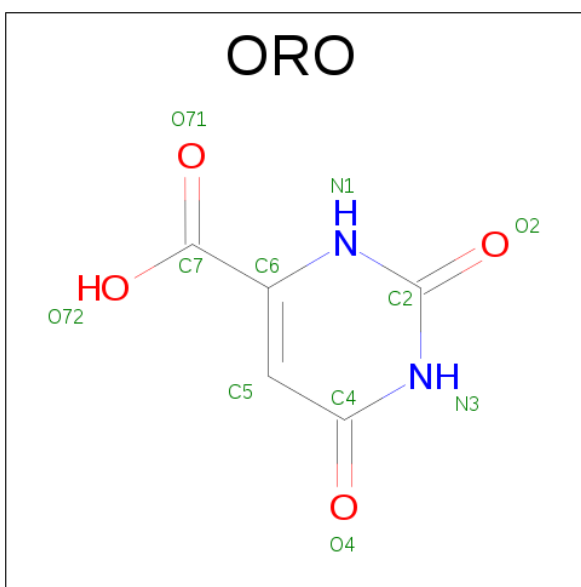
- Molecule 1 is a protein called Dihydroorotate dehydrogenase (quinone), mitochondrial.

Mol	Chain	Residues	Atoms					ZeroOcc	AltConf	Trace
1	A	365	Total	C	N	O	S	0	0	0
			2792	1750	518	520	4			

There are 23 discrepancies between the modelled and reference sequences:

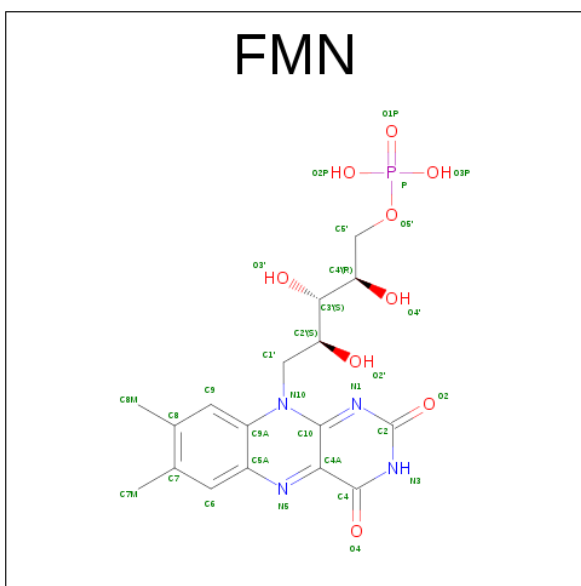
Chain	Residue	Modelled	Actual	Comment	Reference
A	7	MET	-	expression tag	UNP Q02127
A	8	GLY	-	expression tag	UNP Q02127
A	9	HIS	-	expression tag	UNP Q02127
A	10	HIS	-	expression tag	UNP Q02127
A	11	HIS	-	expression tag	UNP Q02127
A	12	HIS	-	expression tag	UNP Q02127
A	13	HIS	-	expression tag	UNP Q02127
A	14	HIS	-	expression tag	UNP Q02127
A	15	HIS	-	expression tag	UNP Q02127
A	16	HIS	-	expression tag	UNP Q02127
A	17	HIS	-	expression tag	UNP Q02127
A	18	HIS	-	expression tag	UNP Q02127
A	19	SER	-	expression tag	UNP Q02127
A	20	SER	-	expression tag	UNP Q02127
A	21	GLY	-	expression tag	UNP Q02127
A	22	HIS	-	expression tag	UNP Q02127
A	23	ILE	-	expression tag	UNP Q02127
A	24	ASP	-	expression tag	UNP Q02127
A	25	ASP	-	expression tag	UNP Q02127
A	26	ASP	-	expression tag	UNP Q02127
A	27	ASP	-	expression tag	UNP Q02127
A	28	LYS	-	expression tag	UNP Q02127
A	29	HIS	-	expression tag	UNP Q02127

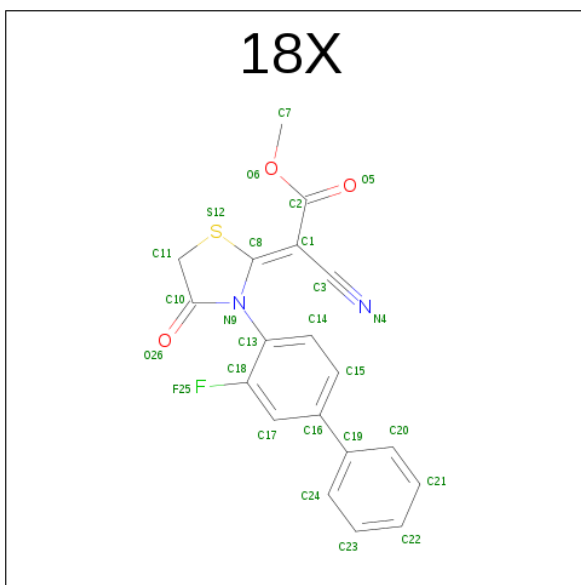
- Molecule 2 is OROTIC ACID (three-letter code: ORO) (formula: C₅H₄N₂O₄).



Mol	Chain	Residues	Atoms				ZeroOcc	AltConf
2	A	1	Total	C	N	O	0	0
			11	5	2	4		

- Molecule 3 is FLAVIN MONONUCLEOTIDE (three-letter code: FMN) (formula: $C_{17}H_{21}N_4O_9P$).





Mol	Chain	Residues	Atoms					ZeroOcc	AltConf
4	A	1	Total	C	F	N	O	S	
			26	19	1	2	3	1	
								0	0

- Molecule 5 is SULFATE ION (three-letter code: SO4) (formula: O₄S).



Mol	Chain	Residues	Atoms			ZeroOcc	AltConf
5	A	1	Total	O	S		
			5	4	1	0	0
5	A	1	Total	O	S		
			5	4	1	0	0
5	A	1	Total	O	S		
			5	4	1	0	0

Continued on next page...

Continued from previous page...

Mol	Chain	Residues	Atoms			ZeroOcc	AltConf
5	A	1	Total	O	S	0	0
			5	4	1		

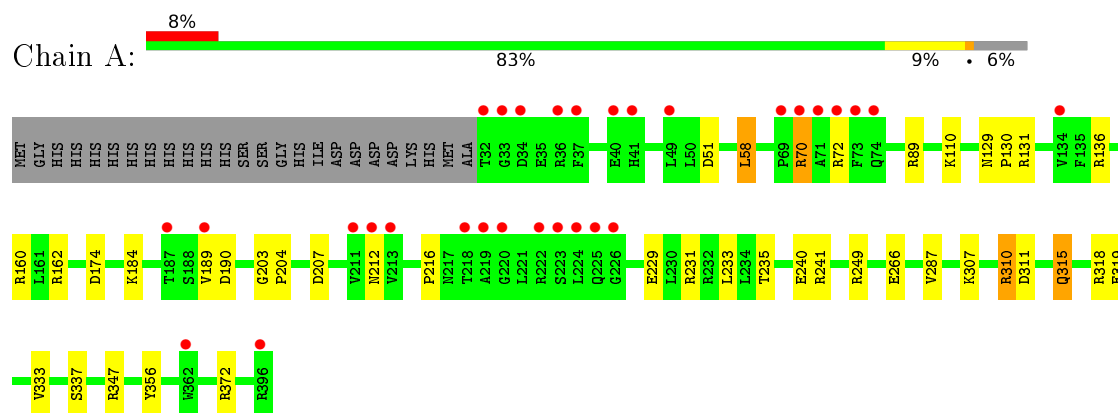
- Molecule 6 is water.

Mol	Chain	Residues	Atoms		ZeroOcc	AltConf
6	A	222	Total	O	0	0
			222	222		

3 Residue-property plots [i](#)

These plots are drawn for all protein, RNA and DNA chains in the entry. The first graphic for a chain summarises the proportions of errors displayed in the second graphic. The second graphic shows the sequence view annotated by issues in geometry and electron density. Residues are color-coded according to the number of geometric quality criteria for which they contain at least one outlier: green = 0, yellow = 1, orange = 2 and red = 3 or more. A red dot above a residue indicates a poor fit to the electron density ($RSRZ > 2$). Stretches of 2 or more consecutive residues without any outlier are shown as a green connector. Residues present in the sample, but not in the model, are shown in grey.

- Molecule 1: Dihydroorotate dehydrogenase (quinone), mitochondrial



4 Data and refinement statistics

Property	Value	Source
Space group	P 32 2 1	Depositor
Cell constants a, b, c, α , β , γ	91.32Å 91.32Å 122.82Å 90.00° 90.00° 120.00°	Depositor
Resolution (Å)	29.04 – 1.86 29.04 – 1.86	Depositor EDS
% Data completeness (in resolution range)	99.9 (29.04-1.86) 99.9 (29.04-1.86)	Depositor EDS
R_{merge}	(Not available)	Depositor
R_{sym}	(Not available)	Depositor
$\langle I/\sigma(I) \rangle$ ¹	19.63 (at 1.85Å)	Xtriage
Refinement program	REFMAC 5.7.0032	Depositor
R, R_{free}	0.160 , 0.179 0.172 , 0.191	Depositor DCC
R_{free} test set	2553 reflections (5.35%)	DCC
Wilson B-factor (Å ²)	19.3	Xtriage
Anisotropy	0.072	Xtriage
Bulk solvent k_{sol} (e/Å ³), B_{sol} (Å ²)	0.39 , 57.2	EDS
L-test for twinning ²	$\langle L \rangle = 0.50$, $\langle L^2 \rangle = 0.34$	Xtriage
Estimated twinning fraction	0.016 for -h,-k,l	Xtriage
F_o, F_c correlation	0.95	EDS
Total number of atoms	3102	wwPDB-VP
Average B, all atoms (Å ²)	23.0	wwPDB-VP

Xtriage's analysis on translational NCS is as follows: *The largest off-origin peak in the Patterson function is 3.77% of the height of the origin peak. No significant pseudotranslation is detected.*

¹Intensities estimated from amplitudes.

²Theoretical values of $\langle |L| \rangle$, $\langle L^2 \rangle$ for acentric reflections are 0.5, 0.375 respectively for untwinned datasets, and 0.333, 0.2 for perfectly twinned datasets.

5 Model quality

5.1 Standard geometry

Bond lengths and bond angles in the following residue types are not validated in this section: FMN, ORO, 18X, SO4

The Z score for a bond length (or angle) is the number of standard deviations the observed value is removed from the expected value. A bond length (or angle) with $|Z| > 5$ is considered an outlier worth inspection. RMSZ is the root-mean-square of all Z scores of the bond lengths (or angles).

Mol	Chain	Bond lengths		Bond angles	
		RMSZ	$\# Z > 5$	RMSZ	$\# Z > 5$
1	A	1.29	9/2838 (0.3%)	1.32	24/3834 (0.6%)

All (9) bond length outliers are listed below:

Mol	Chain	Res	Type	Atoms	Z	Observed(Å)	Ideal(Å)
1	A	310	ARG	CD-NE	-16.21	1.18	1.46
1	A	310	ARG	CG-CD	8.46	1.73	1.51
1	A	266	GLU	CD-OE1	7.19	1.33	1.25
1	A	212	ASN	CG-OD1	-6.67	1.09	1.24
1	A	212	ASN	N-CA	-5.88	1.34	1.46
1	A	337	SER	CB-OG	-5.74	1.34	1.42
1	A	240	GLU	CD-OE1	5.20	1.31	1.25
1	A	333	VAL	CB-CG1	-5.12	1.42	1.52
1	A	315	GLN	CD-OE1	-5.10	1.12	1.24

All (24) bond angle outliers are listed below:

Mol	Chain	Res	Type	Atoms	Z	Observed(°)	Ideal(°)
1	A	310	ARG	NE-CZ-NH2	-30.55	105.03	120.30
1	A	310	ARG	NE-CZ-NH1	17.25	128.93	120.30
1	A	136	ARG	NE-CZ-NH1	9.28	124.94	120.30
1	A	136	ARG	NE-CZ-NH2	-9.24	115.68	120.30
1	A	190	ASP	CB-CG-OD1	8.75	126.17	118.30
1	A	249	ARG	NE-CZ-NH1	8.33	124.47	120.30
1	A	51	ASP	CB-CG-OD1	-7.89	111.20	118.30
1	A	310	ARG	CD-NE-CZ	7.80	134.52	123.60
1	A	207	ASP	CB-CG-OD2	7.45	125.01	118.30
1	A	51	ASP	CB-CG-OD2	7.11	124.70	118.30
1	A	266	GLU	OE1-CD-OE2	7.04	131.75	123.30
1	A	190	ASP	CB-CG-OD2	-7.03	111.98	118.30

Continued on next page...

Continued from previous page...

Mol	Chain	Res	Type	Atoms	Z	Observed(°)	Ideal(°)
1	A	372	ARG	NE-CZ-NH2	-6.92	116.84	120.30
1	A	233	LEU	CB-CG-CD1	-6.77	99.50	111.00
1	A	307	LYS	CD-CE-NZ	-6.62	96.47	111.70
1	A	233	LEU	CB-CG-CD2	6.56	122.15	111.00
1	A	207	ASP	CB-CG-OD1	-6.41	112.53	118.30
1	A	372	ARG	NE-CZ-NH1	6.25	123.43	120.30
1	A	310	ARG	NH1-CZ-NH2	6.04	126.04	119.40
1	A	160	ARG	NE-CZ-NH1	5.93	123.27	120.30
1	A	347	ARG	NE-CZ-NH2	-5.60	117.50	120.30
1	A	241	ARG	NE-CZ-NH2	5.28	122.94	120.30
1	A	162	ARG	NE-CZ-NH2	-5.08	117.76	120.30
1	A	319	GLU	OE1-CD-OE2	-5.00	117.30	123.30

There are no chirality outliers.

There are no planarity outliers.

5.2 Too-close contacts ⓘ

In the following table, the Non-H and H(model) columns list the number of non-hydrogen atoms and hydrogen atoms in the chain respectively. The H(added) column lists the number of hydrogen atoms added and optimized by MolProbity. The Clashes column lists the number of clashes within the asymmetric unit, whereas Symm-Clashes lists symmetry related clashes.

Mol	Chain	Non-H	H(model)	H(added)	Clashes	Symm-Clashes
1	A	2792	0	2856	18	0
2	A	11	0	3	0	0
3	A	31	0	19	0	0
4	A	26	0	0	2	0
5	A	20	0	0	0	0
6	A	222	0	0	2	0
All	All	3102	0	2878	20	0

The all-atom clashscore is defined as the number of clashes found per 1000 atoms (including hydrogen atoms). The all-atom clashscore for this structure is 3.

All (20) close contacts within the same asymmetric unit are listed below, sorted by their clash magnitude.

Atom-1	Atom-2	Interatomic distance (Å)	Clash overlap (Å)
1:A:310:ARG:HD3	1:A:311:ASP:OD1	1.79	0.81
1:A:315:GLN:HE22	1:A:318:ARG:HE	1.24	0.80

Continued on next page...

Continued from previous page...

Atom-1	Atom-2	Interatomic distance (Å)	Clash overlap (Å)
1:A:310:ARG:CD	1:A:311:ASP:OD1	2.29	0.80
1:A:231:ARG:O	1:A:235:THR:HG23	1.83	0.79
1:A:315:GLN:NE2	1:A:318:ARG:HE	1.87	0.72
1:A:70:ARG:HG2	1:A:110:LYS:HE2	1.74	0.69
1:A:235:THR:HG21	6:A:706:HOH:O	1.92	0.68
4:A:403:18X:O5	4:A:403:18X:S12	2.54	0.65
1:A:189:VAL:O	1:A:189:VAL:HG12	2.00	0.62
1:A:310:ARG:HD2	1:A:311:ASP:OD1	2.04	0.56
1:A:131:ARG:NH1	6:A:502:HOH:O	2.36	0.53
4:A:403:18X:C3	4:A:403:18X:C13	2.90	0.49
1:A:129:ASN:HB3	1:A:130:PRO:HD2	1.95	0.48
1:A:89:ARG:NH2	1:A:174:ASP:OD2	2.46	0.48
1:A:58:LEU:HD23	1:A:58:LEU:O	2.15	0.47
1:A:70:ARG:HG2	1:A:110:LYS:CE	2.45	0.45
1:A:203:GLY:N	1:A:204:PRO:CD	2.80	0.45
1:A:58:LEU:C	1:A:58:LEU:HD23	2.39	0.44
1:A:189:VAL:CG1	1:A:189:VAL:O	2.67	0.43
1:A:216:PRO:HB3	1:A:287:VAL:CG1	2.50	0.42

There are no symmetry-related clashes.

5.3 Torsion angles [i](#)

5.3.1 Protein backbone [i](#)

In the following table, the Percentiles column shows the percent Ramachandran outliers of the chain as a percentile score with respect to all X-ray entries followed by that with respect to entries of similar resolution.

The Analysed column shows the number of residues for which the backbone conformation was analysed, and the total number of residues.

Mol	Chain	Analysed	Favoured	Allowed	Outliers	Percentiles
1	A	363/390 (93%)	351 (97%)	11 (3%)	1 (0%)	46 29

All (1) Ramachandran outliers are listed below:

Mol	Chain	Res	Type
1	A	70	ARG

5.3.2 Protein sidechains ⓘ

In the following table, the Percentiles column shows the percent sidechain outliers of the chain as a percentile score with respect to all X-ray entries followed by that with respect to entries of similar resolution.

The Analysed column shows the number of residues for which the sidechain conformation was analysed, and the total number of residues.

Mol	Chain	Analysed	Rotameric	Outliers	Percentiles	
1	A	295/317 (93%)	290 (98%)	5 (2%)	68	54

All (5) residues with a non-rotameric sidechain are listed below:

Mol	Chain	Res	Type
1	A	58	LEU
1	A	72	ARG
1	A	184	LYS
1	A	229	GLU
1	A	356	TYR

Some sidechains can be flipped to improve hydrogen bonding and reduce clashes. All (1) such sidechains are listed below:

Mol	Chain	Res	Type
1	A	315	GLN

5.3.3 RNA ⓘ

There are no RNA molecules in this entry.

5.4 Non-standard residues in protein, DNA, RNA chains ⓘ

There are no non-standard protein/DNA/RNA residues in this entry.

5.5 Carbohydrates ⓘ

There are no carbohydrates in this entry.

5.6 Ligand geometry ⓘ

7 ligands are modelled in this entry.

In the following table, the Counts columns list the number of bonds (or angles) for which Mogul statistics could be retrieved, the number of bonds (or angles) that are observed in the model and the number of bonds (or angles) that are defined in the chemical component dictionary. The Link column lists molecule types, if any, to which the group is linked. The Z score for a bond length (or angle) is the number of standard deviations the observed value is removed from the expected value. A bond length (or angle) with $|Z| > 2$ is considered an outlier worth inspection. RMSZ is the root-mean-square of all Z scores of the bond lengths (or angles).

Mol	Type	Chain	Res	Link	Bond lengths			Bond angles		
					Counts	RMSZ	# $ Z > 2$	Counts	RMSZ	# $ Z > 2$
2	ORO	A	401	-	6,11,11	1.00	0	6,15,15	4.88	5 (83%)
3	FMN	A	402	-	32,33,33	1.54	7 (21%)	34,50,50	3.09	9 (26%)
4	18X	A	403	-	27,28,28	2.32	8 (29%)	33,39,39	2.45	14 (42%)
5	SO4	A	404	-	4,4,4	1.44	0	6,6,6	0.78	0
5	SO4	A	405	-	4,4,4	1.43	1 (25%)	6,6,6	0.88	0
5	SO4	A	406	-	4,4,4	0.27	0	6,6,6	0.40	0
5	SO4	A	407	-	4,4,4	0.88	0	6,6,6	0.75	0

In the following table, the Chirals column lists the number of chiral outliers, the number of chiral centers analysed, the number of these observed in the model and the number defined in the chemical component dictionary. Similar counts are reported in the Torsion and Rings columns. '-' means no outliers of that kind were identified.

Mol	Type	Chain	Res	Link	Chirals	Torsions	Rings
2	ORO	A	401	-	-	0/0/4/4	0/1/1/1
3	FMN	A	402	-	-	0/18/18/18	0/3/3/3
4	18X	A	403	-	-	0/18/33/33	0/3/3/3
5	SO4	A	404	-	-	0/0/0/0	0/0/0/0
5	SO4	A	405	-	-	0/0/0/0	0/0/0/0
5	SO4	A	406	-	-	0/0/0/0	0/0/0/0
5	SO4	A	407	-	-	0/0/0/0	0/0/0/0

All (16) bond length outliers are listed below:

Mol	Chain	Res	Type	Atoms	Z	Observed(Å)	Ideal(Å)
4	A	403	18X	C3-C1	-6.90	1.29	1.43
3	A	402	FMN	C1'-N10	-3.41	1.44	1.48
4	A	403	18X	C10-N9	-2.17	1.37	1.40
3	A	402	FMN	C10-N10	-2.14	1.36	1.39
4	A	403	18X	C8-N9	-2.11	1.36	1.39
3	A	402	FMN	C8M-C8	2.02	1.55	1.51
3	A	402	FMN	O4-C4	2.10	1.29	1.24
5	A	405	SO4	O3-S	2.12	1.55	1.47
4	A	403	18X	C3-N4	2.27	1.18	1.14

Continued on next page...

Continued from previous page...

Mol	Chain	Res	Type	Atoms	Z	Observed(Å)	Ideal(Å)
4	A	403	18X	O26-C10	2.27	1.28	1.23
3	A	402	FMN	C9A-N10	2.32	1.42	1.38
3	A	402	FMN	C4-C4A	2.75	1.46	1.41
4	A	403	18X	C11-C10	3.13	1.56	1.50
3	A	402	FMN	C4A-C10	3.51	1.47	1.40
4	A	403	18X	C13-C18	3.71	1.48	1.40
4	A	403	18X	O6-C2	5.30	1.46	1.33

All (28) bond angle outliers are listed below:

Mol	Chain	Res	Type	Atoms	Z	Observed(°)	Ideal(°)
3	A	402	FMN	C4-C4A-C10	-8.54	114.47	119.94
2	A	401	ORO	N3-C2-N1	-5.55	118.35	127.69
4	A	403	18X	C13-N9-C10	-5.36	116.42	122.77
3	A	402	FMN	N3-C2-N1	-5.31	118.76	127.69
2	A	401	ORO	C5-C4-N3	-5.13	118.60	124.02
4	A	403	18X	C18-C13-N9	-4.29	116.35	120.20
4	A	403	18X	C10-C11-S12	-4.13	102.63	107.46
4	A	403	18X	C17-C18-C13	-3.81	120.19	123.38
3	A	402	FMN	C4A-C4-N3	-3.63	118.78	123.52
3	A	402	FMN	C4A-C10-N10	-3.47	118.00	120.52
4	A	403	18X	O5-C2-C1	-2.91	118.57	125.10
4	A	403	18X	C24-C19-C16	-2.45	117.31	121.40
3	A	402	FMN	C6-C5A-C9A	-2.43	116.43	119.11
4	A	403	18X	C3-C1-C2	-2.20	112.40	117.43
3	A	402	FMN	C6-C5A-N5	2.06	121.49	118.92
3	A	402	FMN	C1'-N10-C9A	2.14	121.31	118.83
4	A	403	18X	C24-C19-C20	2.51	122.46	117.56
2	A	401	ORO	C4-C5-C6	2.59	118.40	116.73
4	A	403	18X	C15-C16-C17	2.83	121.76	118.17
4	A	403	18X	C7-O6-C2	2.87	121.49	115.89
3	A	402	FMN	C4-C4A-N5	2.98	122.32	118.70
4	A	403	18X	C14-C13-N9	3.08	124.13	118.62
4	A	403	18X	F25-C18-C13	3.61	121.89	118.43
2	A	401	ORO	C2-N1-C6	3.80	122.00	117.03
4	A	403	18X	O6-C2-C1	3.94	119.57	111.45
4	A	403	18X	C11-C10-N9	4.81	113.22	111.41
2	A	401	ORO	C4-N3-C2	7.80	122.42	114.21
3	A	402	FMN	C4-N3-C2	12.70	125.75	115.16

There are no chirality outliers.

There are no torsion outliers.

There are no ring outliers.

1 monomer is involved in 2 short contacts:

Mol	Chain	Res	Type	Clashes	Symm-Clashes
4	A	403	18X	2	0

5.7 Other polymers [i](#)

There are no such residues in this entry.

5.8 Polymer linkage issues [i](#)

There are no chain breaks in this entry.

6 Fit of model and data ⓘ

6.1 Protein, DNA and RNA chains ⓘ

In the following table, the column labelled ‘#RSRZ> 2’ contains the number (and percentage) of RSRZ outliers, followed by percent RSRZ outliers for the chain as percentile scores relative to all X-ray entries and entries of similar resolution. The OWAB column contains the minimum, median, 95th percentile and maximum values of the occupancy-weighted average B-factor per residue. The column labelled ‘Q< 0.9’ lists the number of (and percentage) of residues with an average occupancy less than 0.9.

Mol	Chain	Analysed	<RSRZ>	#RSRZ>2	OWAB(Å ²)	Q<0.9
1	A	365/390 (93%)	-0.02	30 (8%) 14 14	7, 18, 46, 82	12 (3%)

All (30) RSRZ outliers are listed below:

Mol	Chain	Res	Type	RSRZ
1	A	211	VAL	9.0
1	A	213	VAL	6.6
1	A	70	ARG	5.7
1	A	226	GLY	5.6
1	A	212	ASN	5.5
1	A	72	ARG	4.6
1	A	224	LEU	4.1
1	A	219	ALA	4.1
1	A	225	GLN	3.8
1	A	134	VAL	3.7
1	A	33	GLY	3.7
1	A	189	VAL	3.6
1	A	362	TRP	3.5
1	A	32	THR	3.5
1	A	37	PHE	3.4
1	A	223	SER	3.2
1	A	218	THR	3.1
1	A	49	LEU	3.1
1	A	36	ARG	3.0
1	A	73	PHE	2.9
1	A	74	GLN	2.7
1	A	71	ALA	2.7
1	A	41	HIS	2.7
1	A	396	ARG	2.6
1	A	220	GLY	2.6
1	A	34	ASP	2.6
1	A	69	PRO	2.4

Continued on next page...

Continued from previous page...

Mol	Chain	Res	Type	RSRZ
1	A	40	GLU	2.3
1	A	222	ARG	2.2
1	A	187	THR	2.1

6.2 Non-standard residues in protein, DNA, RNA chains [i](#)

There are no non-standard protein/DNA/RNA residues in this entry.

6.3 Carbohydrates [i](#)

There are no carbohydrates in this entry.

6.4 Ligands [i](#)

In the following table, the Atoms column lists the number of modelled atoms in the group and the number defined in the chemical component dictionary. LLDF column lists the quality of electron density of the group with respect to its neighbouring residues in protein, DNA or RNA chains. The B-factors column lists the minimum, median, 95th percentile and maximum values of B factors of atoms in the group. The column labelled 'Q < 0.9' lists the number of atoms with occupancy less than 0.9.

Mol	Type	Chain	Res	Atoms	RSCC	RSR	LLDF	B-factors(Å ²)	Q<0.9
4	18X	A	403	26/26	0.87	0.21	1.98	27,35,43,48	0
5	SO4	A	404	5/5	0.84	0.18	1.49	42,45,69,70	0
3	FMN	A	402	31/31	0.99	0.10	-0.30	10,11,13,15	0
2	ORO	A	401	11/11	0.99	0.07	-0.52	11,12,15,16	0
5	SO4	A	405	5/5	0.91	0.35	-	36,54,60,64	0
5	SO4	A	407	5/5	0.99	0.10	-	27,28,33,33	0
5	SO4	A	406	5/5	0.96	0.31	-	58,60,62,65	0

6.5 Other polymers [i](#)

There are no such residues in this entry.