



Full wwPDB X-ray Structure Validation Report ⓘ

Feb 1, 2016 – 12:06 AM GMT

PDB ID : 1ZP4
Title : Glu28Gln mutant of E. coli Methylenetetrahydrofolate Reductase (oxidized)
complex with Methyltetrahydrofolate
Authors : Pejchal, R.; Sargeant, R.; Ludwig, M.L.
Deposited on : 2005-05-16
Resolution : 1.85 Å(reported)

This is a Full wwPDB X-ray Structure Validation Report for a publicly released PDB entry.
We welcome your comments at validation@mail.wwpdb.org
A user guide is available at
<http://wwpdb.org/validation/2016/XrayValidationReportHelp>
with specific help available everywhere you see the ⓘ symbol.

The following versions of software and data (see [references ⓘ](#)) were used in the production of this report:

MolProbity : 4.02b-467
Mogul : 1.7 (RC4), CSD as536be (2015)
Xtriage (Phenix) : 1.9-1692
EDS : rb-20026688
Percentile statistics : 20151230.v01 (using entries in the PDB archive December 30th 2015)
Refmac : 5.8.0135
CCP4 : 6.5.0
Ideal geometry (proteins) : Engh & Huber (2001)
Ideal geometry (DNA, RNA) : Parkinson et al. (1996)
Validation Pipeline (wwPDB-VP) : trunk26865

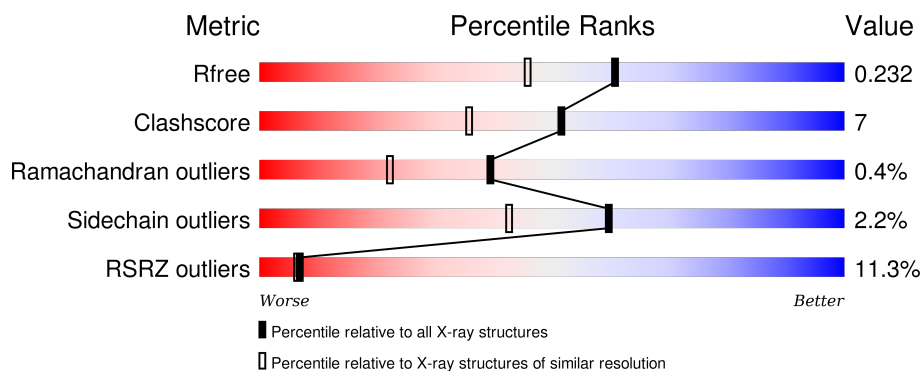
1 Overall quality at a glance

The following experimental techniques were used to determine the structure:

X-RAY DIFFRACTION

The reported resolution of this entry is 1.85 Å.

Percentile scores (ranging between 0-100) for global validation metrics of the entry are shown in the following graphic. The table shows the number of entries on which the scores are based.



Metric	Whole archive (#Entries)	Similar resolution (#Entries, resolution range(Å))
R_{free}	91344	1745 (1.86-1.86)
Clashscore	102246	1898 (1.86-1.86)
Ramachandran outliers	100387	1875 (1.86-1.86)
Sidechain outliers	100360	1875 (1.86-1.86)
RSRZ outliers	91569	1747 (1.86-1.86)

The table below summarises the geometric issues observed across the polymeric chains and their fit to the electron density. The red, orange, yellow and green segments on the lower bar indicate the fraction of residues that contain outliers for ≥ 3 , 2, 1 and 0 types of geometric quality criteria. A grey segment represents the fraction of residues that are not modelled. The numeric value for each fraction is indicated below the corresponding segment, with a dot representing fractions $\leq 5\%$. The upper red bar (where present) indicates the fraction of residues that have poor fit to the electron density. The numeric value is given above the bar.

Mol	Chain	Length	Quality of chain
1	A	304	<div> <div>23%</div> <div>76%</div> <div>16%</div> <div>• 7%</div> </div>
1	B	304	<div> <div>4%</div> <div>82%</div> <div>11%</div> <div>• 6%</div> </div>
1	C	304	<div> <div>4%</div> <div>77%</div> <div>11%</div> <div>• 12%</div> </div>

2 Entry composition

There are 5 unique types of molecules in this entry. The entry contains 7230 atoms, of which 0 are hydrogens and 0 are deuteriums.

In the tables below, the ZeroOcc column contains the number of atoms modelled with zero occupancy, the AltConf column contains the number of residues with at least one atom in alternate conformation and the Trace column contains the number of residues modelled with at most 2 atoms.

- Molecule 1 is a protein called 5,10-methylenetetrahydrofolate reductase.

Mol	Chain	Residues	Atoms					ZeroOcc	AltConf	Trace
1	A	282	Total	C	N	O	S	0	0	0
			2153	1369	372	401	11			
1	B	285	Total	C	N	O	S	0	0	0
			2225	1405	392	417	11			
1	C	267	Total	C	N	O	S	0	0	0
			2075	1316	361	387	11			

There are 27 discrepancies between the modelled and reference sequences:

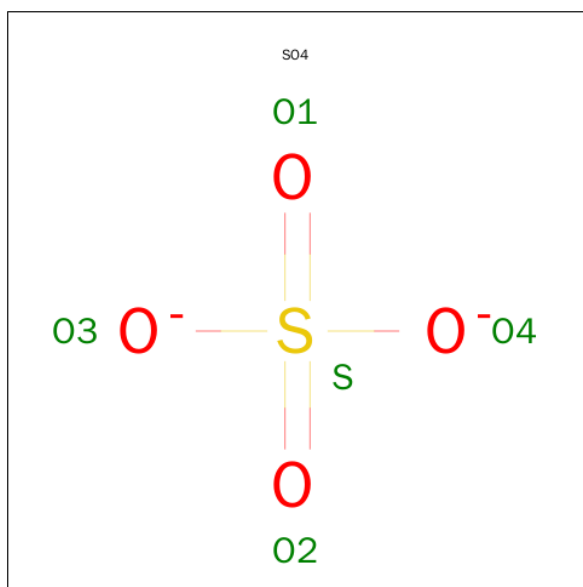
Chain	Residue	Modelled	Actual	Comment	Reference
A	28	GLN	GLU	ENGINEERED	UNP P00394
A	297	LEU	-	CLONING ARTIFACT	UNP P00394
A	298	GLU	-	CLONING ARTIFACT	UNP P00394
A	299	HIS	-	EXPRESSION TAG	UNP P00394
A	300	HIS	-	EXPRESSION TAG	UNP P00394
A	301	HIS	-	EXPRESSION TAG	UNP P00394
A	302	HIS	-	EXPRESSION TAG	UNP P00394
A	303	HIS	-	EXPRESSION TAG	UNP P00394
A	304	HIS	-	EXPRESSION TAG	UNP P00394
B	28	GLN	GLU	ENGINEERED	UNP P00394
B	297	LEU	-	CLONING ARTIFACT	UNP P00394
B	298	GLU	-	CLONING ARTIFACT	UNP P00394
B	299	HIS	-	EXPRESSION TAG	UNP P00394
B	300	HIS	-	EXPRESSION TAG	UNP P00394
B	301	HIS	-	EXPRESSION TAG	UNP P00394
B	302	HIS	-	EXPRESSION TAG	UNP P00394
B	303	HIS	-	EXPRESSION TAG	UNP P00394
B	304	HIS	-	EXPRESSION TAG	UNP P00394
C	28	GLN	GLU	ENGINEERED	UNP P00394
C	297	LEU	-	CLONING ARTIFACT	UNP P00394
C	298	GLU	-	CLONING ARTIFACT	UNP P00394
C	299	HIS	-	EXPRESSION TAG	UNP P00394
C	300	HIS	-	EXPRESSION TAG	UNP P00394

Continued on next page...

Continued from previous page...

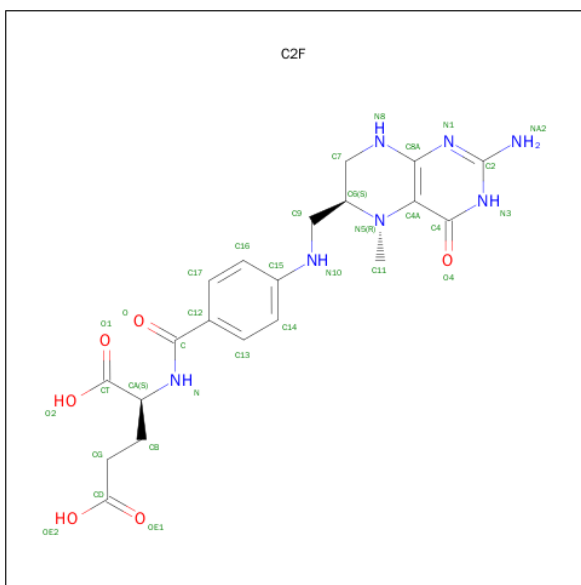
Chain	Residue	Modelled	Actual	Comment	Reference
C	301	HIS	-	EXPRESSION TAG	UNP P00394
C	302	HIS	-	EXPRESSION TAG	UNP P00394
C	303	HIS	-	EXPRESSION TAG	UNP P00394
C	304	HIS	-	EXPRESSION TAG	UNP P00394

- Molecule 2 is SULFATE ION (three-letter code: SO₄) (formula: O₄S).



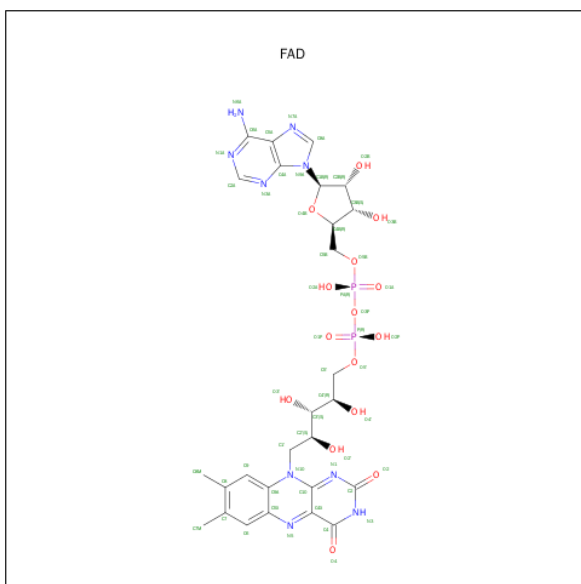
Mol	Chain	Residues	Atoms			ZeroOcc	AltConf
2	A	1	Total	O	S	0	0
			5	4	1		
2	C	1	Total	O	S	0	0
			5	4	1		

- Molecule 3 is 5-METHYL-5,6,7,8-TETRAHYDROFOLIC ACID (three-letter code: C2F) (formula: C₂₀H₂₅N₇O₆).



Mol	Chain	Residues	Atoms				ZeroOcc	AltConf
3	A	1	Total 33	C 20	N 7	O 6	0	0
3	B	1	Total 33	C 20	N 7	O 6	0	0
3	C	1	Total 33	C 20	N 7	O 6	0	0

- Molecule 4 is FLAVIN-ADENINE DINUCLEOTIDE (three-letter code: FAD) (formula: $\text{C}_{27}\text{H}_{33}\text{N}_9\text{O}_{15}\text{P}_2$).



Mol	Chain	Residues	Atoms					ZeroOcc	AltConf
4	A	1	Total	C	N	O	P	0	0
			53	27	9	15	2		
4	B	1	Total	C	N	O	P	0	0
			53	27	9	15	2		
4	C	1	Total	C	N	O	P	0	0
			53	27	9	15	2		

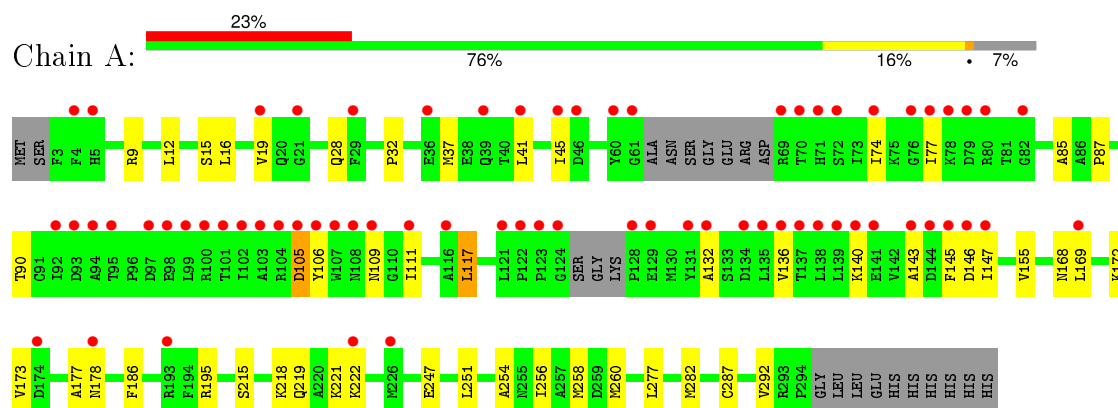
- Molecule 5 is water.

Mol	Chain	Residues	Atoms		ZeroOcc	AltConf
5	A	87	Total	O	0	0
			87	87		
5	B	203	Total	O	0	0
			203	203		
5	C	219	Total	O	0	0
			219	219		

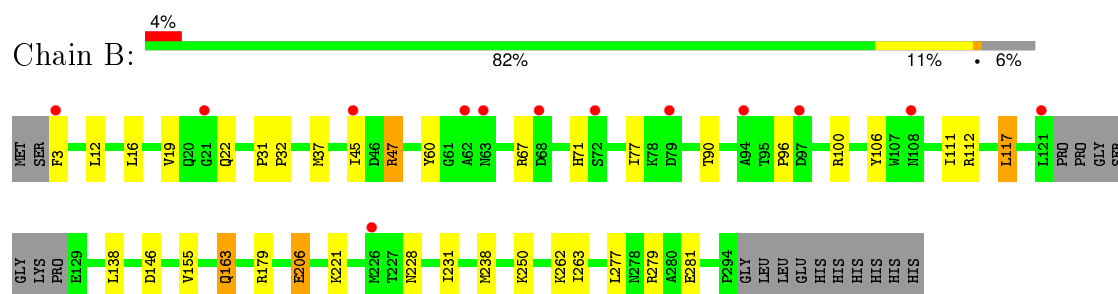
3 Residue-property plots [i](#)

These plots are drawn for all protein, RNA and DNA chains in the entry. The first graphic for a chain summarises the proportions of errors displayed in the second graphic. The second graphic shows the sequence view annotated by issues in geometry and electron density. Residues are color-coded according to the number of geometric quality criteria for which they contain at least one outlier: green = 0, yellow = 1, orange = 2 and red = 3 or more. A red dot above a residue indicates a poor fit to the electron density ($RSRZ > 2$). Stretches of 2 or more consecutive residues without any outlier are shown as a green connector. Residues present in the sample, but not in the model, are shown in grey.

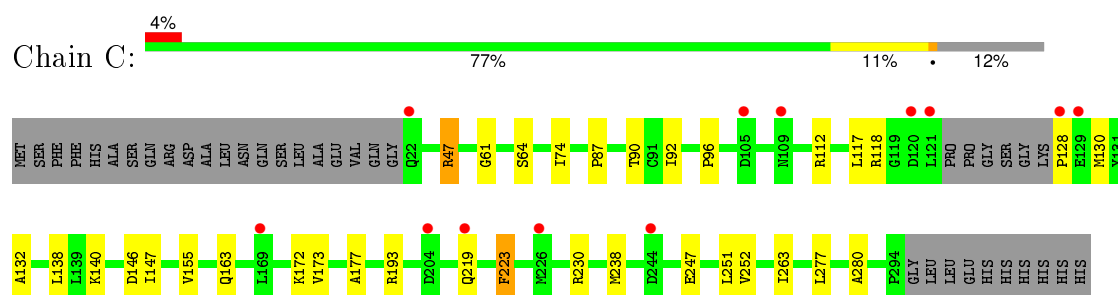
- Molecule 1: 5,10-methylenetetrahydrofolate reductase



- Molecule 1: 5,10-methylenetetrahydrofolate reductase



- Molecule 1: 5,10-methylenetetrahydrofolate reductase



4 Data and refinement statistics

Property	Value	Source
Space group	C 1 2 1	Depositor
Cell constants a, b, c, α , β , γ	103.59Å 127.81Å 97.95Å 90.00° 121.88° 90.00°	Depositor
Resolution (Å)	17.27 – 1.85 17.26 – 1.76	Depositor EDS
% Data completeness (in resolution range)	99.5 (17.27-1.85) 98.2 (17.26-1.76)	Depositor EDS
R_{merge}	(Not available)	Depositor
R_{sym}	0.06	Depositor
$\langle I/\sigma(I) \rangle$ ¹	1.78 (at 1.75Å)	Xtriage
Refinement program	CNS 1.1	Depositor
R, R_{free}	0.213 , 0.231 0.213 , 0.232	Depositor DCC
R_{free} test set	4572 reflections (5.00%)	DCC
Wilson B-factor (Å ²)	23.4	Xtriage
Anisotropy	0.418	Xtriage
Bulk solvent k_{sol} (e/Å ³), B_{sol} (Å ²)	0.50 , 69.3	EDS
Estimated twinning fraction	0.016 for h,-k,-h-l	Xtriage
L-test for twinning ²	$\langle L \rangle = 0.49$, $\langle L^2 \rangle = 0.32$	Xtriage
Outliers	0 of 105079 reflections	Xtriage
F_o, F_c correlation	0.94	EDS
Total number of atoms	7230	wwPDB-VP
Average B, all atoms (Å ²)	28.0	wwPDB-VP

Xtriage's analysis on translational NCS is as follows: *The largest off-origin peak in the Patterson function is 3.91% of the height of the origin peak. No significant pseudotranslation is detected.*

¹Intensities estimated from amplitudes.

²Theoretical values of $\langle |L| \rangle$, $\langle L^2 \rangle$ for acentric reflections are 0.5, 0.375 respectively for untwinned datasets, and 0.333, 0.2 for perfectly twinned datasets.

5 Model quality [i](#)

5.1 Standard geometry [i](#)

Bond lengths and bond angles in the following residue types are not validated in this section: C2F, SO4, FAD

The Z score for a bond length (or angle) is the number of standard deviations the observed value is removed from the expected value. A bond length (or angle) with $|Z| > 5$ is considered an outlier worth inspection. RMSZ is the root-mean-square of all Z scores of the bond lengths (or angles).

Mol	Chain	Bond lengths		Bond angles	
		RMSZ	$\# Z > 5$	RMSZ	$\# Z > 5$
1	A	0.30	0/2198	0.52	0/2987
1	B	0.33	0/2269	0.56	1/3075 (0.0%)
1	C	0.33	0/2118	0.58	1/2873 (0.0%)
All	All	0.32	0/6585	0.55	2/8935 (0.0%)

There are no bond length outliers.

All (2) bond angle outliers are listed below:

Mol	Chain	Res	Type	Atoms	Z	Observed(°)	Ideal(°)
1	C	146	ASP	N-CA-C	-5.71	95.58	111.00
1	B	146	ASP	N-CA-C	-5.57	95.97	111.00

There are no chirality outliers.

There are no planarity outliers.

5.2 Too-close contacts [i](#)

In the following table, the Non-H and H(model) columns list the number of non-hydrogen atoms and hydrogen atoms in the chain respectively. The H(added) column lists the number of hydrogen atoms added and optimized by MolProbity. The Clashes column lists the number of clashes within the asymmetric unit, whereas Symm-Clashes lists symmetry related clashes.

Mol	Chain	Non-H	H(model)	H(added)	Clashes	Symm-Clashes
1	A	2153	0	2079	38	0
1	B	2225	0	2170	27	0
1	C	2075	0	2024	30	0
2	A	5	0	0	0	0
2	C	5	0	0	0	0
3	A	33	0	23	4	0

Continued on next page...

Continued from previous page...

Mol	Chain	Non-H	H(model)	H(added)	Clashes	Symm-Clashes
3	B	33	0	23	1	0
3	C	33	0	23	5	0
4	A	53	0	31	0	0
4	B	53	0	31	0	0
4	C	53	0	31	0	0
5	A	87	0	0	1	0
5	B	203	0	0	3	0
5	C	219	0	0	1	1
All	All	7230	0	6435	89	1

The all-atom clashscore is defined as the number of clashes found per 1000 atoms (including hydrogen atoms). The all-atom clashscore for this structure is 7.

All (89) close contacts within the same asymmetric unit are listed below, sorted by their clash magnitude.

Atom-1	Atom-2	Interatomic distance (Å)	Clash overlap (Å)
1:B:19:VAL:HG12	1:C:230:ARG:HH22	1.24	1.00
1:A:195:ARG:HB3	1:A:195:ARG:HH21	1.51	0.76
1:A:16:LEU:O	1:A:19:VAL:HG22	1.91	0.71
1:C:277:LEU:HD13	3:C:997:C2F:HG2	1.71	0.71
1:A:143:ALA:HB3	1:A:145:PHE:CE1	2.26	0.70
1:A:9:ARG:HD2	1:C:263:ILE:CD1	2.22	0.70
1:C:112:ARG:HG2	1:C:112:ARG:HH21	1.57	0.70
1:B:12:LEU:HD21	1:B:263:ILE:HD13	1.73	0.69
1:A:186:PHE:HA	1:A:260:MET:HE2	1.74	0.68
1:B:277:LEU:HD13	3:B:996:C2F:HG2	1.77	0.67
1:C:219:GLN:CB	3:C:997:C2F:HA	2.24	0.67
1:C:219:GLN:HB3	3:C:997:C2F:HA	1.78	0.66
1:B:16:LEU:O	1:B:19:VAL:HG22	1.96	0.65
1:A:106:TYR:HB3	1:A:111:ILE:HB	1.77	0.65
1:A:9:ARG:HD2	1:C:263:ILE:HD12	1.78	0.65
1:B:163:GLN:HE21	1:B:163:GLN:H	1.44	0.64
1:A:186:PHE:HD2	1:A:260:MET:HE1	1.62	0.64
1:A:247:GLU:H	1:A:247:GLU:CD	2.03	0.62
1:C:238:MET:HG3	1:C:252:VAL:HG11	1.80	0.61
1:C:219:GLN:HG3	3:C:997:C2F:O2	2.01	0.60
1:A:105:ASP:O	1:A:109:ASN:OD1	2.19	0.60
1:B:12:LEU:HD21	1:B:263:ILE:CD1	2.30	0.60
1:A:173:VAL:HA	1:A:177:ALA:HB3	1.82	0.59
1:A:111:ILE:N	1:A:111:ILE:HD12	2.18	0.59
1:A:140:LYS:NZ	1:A:140:LYS:HB3	2.17	0.58

Continued on next page...

Continued from previous page...

Atom-1	Atom-2	Interatomic distance (Å)	Clash overlap (Å)
1:C:238:MET:HG3	1:C:252:VAL:CG1	2.34	0.57
1:B:163:GLN:NE2	1:B:163:GLN:H	2.02	0.57
1:B:19:VAL:HG12	1:C:230:ARG:NH2	2.07	0.56
1:C:140:LYS:HD3	1:C:147:ILE:HD12	1.88	0.56
1:C:140:LYS:HB3	1:C:140:LYS:NZ	2.21	0.55
1:B:96:PRO:O	1:B:100:ARG:HG3	2.07	0.55
1:C:112:ARG:NH2	1:C:112:ARG:HG2	2.22	0.55
1:A:74:ILE:HG13	1:A:87:PRO:HB3	1.89	0.55
1:C:61:GLY:HA3	1:C:64:SER:OG	2.07	0.55
1:A:221:LYS:HE2	5:A:789:HOH:O	2.07	0.54
1:A:32:PRO:HB3	1:A:37:MET:HG3	1.89	0.54
1:B:67:ARG:HG3	1:B:67:ARG:HH21	1.73	0.54
1:A:277:LEU:HD13	3:A:995:C2F:HG2	1.89	0.53
1:A:28:GLN:HE22	3:A:995:C2F:H111	1.72	0.53
1:C:193:ARG:HG3	5:C:739:HOH:O	2.09	0.53
1:A:45:ILE:HD13	1:A:77:ILE:HG12	1.91	0.52
1:C:132:ALA:HB3	1:C:172:LYS:HD3	1.91	0.52
1:C:140:LYS:HB3	1:C:140:LYS:HZ2	1.74	0.52
1:C:92:ILE:HD12	1:C:128:PRO:HD3	1.92	0.52
1:B:90:THR:HA	1:B:117:LEU:O	2.11	0.51
1:B:250:LYS:HD3	1:B:281:GLU:OE1	2.10	0.51
1:A:195:ARG:CB	1:A:195:ARG:HH21	2.23	0.51
1:A:147:ILE:HD12	1:A:147:ILE:N	2.27	0.50
1:A:32:PRO:HD3	1:A:41:LEU:HD22	1.93	0.50
1:A:90:THR:HA	1:A:117:LEU:O	2.12	0.50
1:B:238:MET:HG2	5:B:675:HOH:O	2.12	0.50
1:A:256:ILE:O	1:A:260:MET:HG3	2.12	0.49
1:C:96:PRO:HG3	1:C:130:MET:HE1	1.95	0.49
1:B:60:TYR:CE2	1:B:67:ARG:HG2	2.47	0.49
1:C:223:PHE:CE2	3:C:997:C2F:H92	2.48	0.49
1:A:219:GLN:HB3	3:A:995:C2F:HA	1.95	0.49
1:B:106:TYR:HB3	1:B:111:ILE:HB	1.96	0.47
1:B:179:ARG:HA	5:B:830:HOH:O	2.12	0.47
1:C:90:THR:HA	1:C:117:LEU:O	2.16	0.46
1:C:96:PRO:HG3	1:C:130:MET:CE	2.45	0.46
1:A:105:ASP:OD1	1:A:106:TYR:N	2.48	0.46
1:A:74:ILE:HG23	1:A:85:ALA:HB3	1.97	0.46
1:C:74:ILE:HG13	1:C:87:PRO:HB3	1.98	0.46
1:B:221:LYS:HA	1:B:231:ILE:HD11	1.98	0.46
1:B:138:LEU:HD23	1:B:138:LEU:C	2.35	0.46
1:A:28:GLN:NE2	3:A:995:C2F:H111	2.31	0.46

Continued on next page...

Continued from previous page...

Atom-1	Atom-2	Interatomic distance (Å)	Clash overlap (Å)
1:B:19:VAL:HA	1:B:22:GLN:NE2	2.30	0.46
1:A:251:LEU:HD23	1:C:251:LEU:HD23	1.98	0.45
1:C:173:VAL:HA	1:C:177:ALA:HB3	1.98	0.45
1:B:279:ARG:HH21	1:B:279:ARG:HG3	1.82	0.45
1:A:254:ALA:O	1:A:258:MET:HG3	2.17	0.45
1:A:132:ALA:O	1:A:136:VAL:HG23	2.17	0.44
1:C:138:LEU:HD23	1:C:138:LEU:C	2.37	0.44
1:A:215:SER:OG	1:A:282:MET:SD	2.75	0.43
1:A:169:LEU:O	1:A:173:VAL:HG23	2.17	0.43
1:B:37:MET:HG2	5:B:801:HOH:O	2.18	0.43
1:A:218:LYS:O	1:A:222:LYS:HG3	2.18	0.43
1:B:206:GLU:OE1	1:C:163:GLN:HG2	2.18	0.43
1:B:71:HIS:CD2	1:B:106:TYR:OH	2.72	0.42
1:C:47:ARG:HG2	1:C:280:ALA:HB1	2.02	0.42
1:B:12:LEU:HG	1:B:262:LYS:HG2	2.00	0.42
1:A:168:ASN:O	1:A:172:LYS:HG3	2.20	0.42
1:B:31:PRO:HA	1:B:32:PRO:HD3	1.92	0.42
1:A:15:SER:O	1:A:19:VAL:HG13	2.20	0.42
1:A:287:CYS:HB3	1:A:292:VAL:HB	2.02	0.41
1:C:92:ILE:HG12	1:C:118:ARG:O	2.21	0.41
1:A:136:VAL:HG13	1:A:147:ILE:HG21	2.03	0.40
1:B:47:ARG:HG3	1:B:47:ARG:HH11	1.86	0.40
1:B:45:ILE:HD13	1:B:77:ILE:HG12	2.03	0.40

All (1) symmetry-related close contacts are listed below. The label for Atom-2 includes the symmetry operator and encoded unit-cell translations to be applied.

Atom-1	Atom-2	Interatomic distance (Å)	Clash overlap (Å)
5:C:707:HOH:O	5:C:707:HOH:O[2_555]	1.27	0.93

5.3 Torsion angles

5.3.1 Protein backbone

In the following table, the Percentiles column shows the percent Ramachandran outliers of the chain as a percentile score with respect to all X-ray entries followed by that with respect to entries of similar resolution.

The Analysed column shows the number of residues for which the backbone conformation was analysed, and the total number of residues.

Mol	Chain	Analysed	Favoured	Allowed	Outliers	Percentiles	
1	A	276/304 (91%)	268 (97%)	7 (2%)	1 (0%)	39	22
1	B	281/304 (92%)	279 (99%)	1 (0%)	1 (0%)	39	22
1	C	263/304 (86%)	258 (98%)	4 (2%)	1 (0%)	39	22
All	All	820/912 (90%)	805 (98%)	12 (2%)	3 (0%)	39	22

All (3) Ramachandran outliers are listed below:

Mol	Chain	Res	Type
1	A	155	VAL
1	B	155	VAL
1	C	155	VAL

5.3.2 Protein sidechains ⓘ

In the following table, the Percentiles column shows the percent sidechain outliers of the chain as a percentile score with respect to all X-ray entries followed by that with respect to entries of similar resolution.

The Analysed column shows the number of residues for which the sidechain conformation was analysed, and the total number of residues.

Mol	Chain	Analysed	Rotameric	Outliers	Percentiles	
1	A	222/258 (86%)	217 (98%)	5 (2%)	58	41
1	B	234/258 (91%)	227 (97%)	7 (3%)	48	29
1	C	218/258 (84%)	215 (99%)	3 (1%)	74	63
All	All	674/774 (87%)	659 (98%)	15 (2%)	60	43

All (15) residues with a non-rotameric sidechain are listed below:

Mol	Chain	Res	Type
1	A	12	LEU
1	A	105	ASP
1	A	117	LEU
1	A	146	ASP
1	A	178	ASN
1	B	3	PHE
1	B	47	ARG
1	B	112	ARG
1	B	117	LEU
1	B	163	GLN

Continued on next page...

Continued from previous page...

Mol	Chain	Res	Type
1	B	206	GLU
1	B	228	ASN
1	C	47	ARG
1	C	223	PHE
1	C	247	GLU

Some sidechains can be flipped to improve hydrogen bonding and reduce clashes. All (8) such sidechains are listed below:

Mol	Chain	Res	Type
1	A	14	GLN
1	A	43	ASN
1	B	14	GLN
1	B	20	GLN
1	B	22	GLN
1	B	28	GLN
1	B	163	GLN
1	C	71	HIS

5.3.3 RNA ⓘ

There are no RNA molecules in this entry.

5.4 Non-standard residues in protein, DNA, RNA chains ⓘ

There are no non-standard protein/DNA/RNA residues in this entry.

5.5 Carbohydrates ⓘ

There are no carbohydrates in this entry.

5.6 Ligand geometry ⓘ

8 ligands are modelled in this entry.

In the following table, the Counts columns list the number of bonds (or angles) for which Mogul statistics could be retrieved, the number of bonds (or angles) that are observed in the model and the number of bonds (or angles) that are defined in the chemical component dictionary. The Link column lists molecule types, if any, to which the group is linked. The Z score for a bond length (or angle) is the number of standard deviations the observed value is removed from the expected

value. A bond length (or angle) with $|Z| > 2$ is considered an outlier worth inspection. RMSZ is the root-mean-square of all Z scores of the bond lengths (or angles).

Mol	Type	Chain	Res	Link	Bond lengths			Bond angles		
					Counts	RMSZ	$\# Z > 2$	Counts	RMSZ	$\# Z > 2$
4	FAD	A	395	-	48,58,58	2.08	9 (18%)	54,89,89	2.91	10 (18%)
3	C2F	A	995	-	25,35,35	1.21	1 (4%)	27,49,49	1.57	5 (18%)
2	SO4	A	998	-	4,4,4	0.20	0	6,6,6	0.07	0
4	FAD	B	396	-	48,58,58	1.98	11 (22%)	54,89,89	2.91	11 (20%)
3	C2F	B	996	-	25,35,35	1.22	1 (4%)	27,49,49	1.58	6 (22%)
4	FAD	C	397	-	48,58,58	2.03	10 (20%)	54,89,89	2.82	6 (11%)
3	C2F	C	997	-	25,35,35	1.22	1 (4%)	27,49,49	1.57	6 (22%)
2	SO4	C	999	-	4,4,4	0.21	0	6,6,6	0.10	0

In the following table, the Chirals column lists the number of chiral outliers, the number of chiral centers analysed, the number of these observed in the model and the number defined in the chemical component dictionary. Similar counts are reported in the Torsion and Rings columns. '-' means no outliers of that kind were identified.

Mol	Type	Chain	Res	Link	Chirals	Torsions	Rings
4	FAD	A	395	-	-	0/30/50/50	0/6/6/6
3	C2F	A	995	-	-	0/16/35/35	0/3/3/3
2	SO4	A	998	-	-	0/0/0/0	0/0/0/0
4	FAD	B	396	-	-	0/30/50/50	0/6/6/6
3	C2F	B	996	-	-	0/16/35/35	0/3/3/3
4	FAD	C	397	-	-	0/30/50/50	0/6/6/6
3	C2F	C	997	-	-	0/16/35/35	0/3/3/3
2	SO4	C	999	-	-	0/0/0/0	0/0/0/0

All (33) bond length outliers are listed below:

Mol	Chain	Res	Type	Atoms	Z	Observed(Å)	Ideal(Å)
4	C	397	FAD	C8A-N7A	-2.48	1.29	1.34
4	B	396	FAD	C8A-N7A	-2.38	1.30	1.34
4	C	397	FAD	C8-C7	2.01	1.46	1.41
4	B	396	FAD	C6-C5X	2.13	1.45	1.41
4	A	395	FAD	C5X-N5	2.15	1.38	1.35
4	A	395	FAD	C5'-C4'	2.15	1.55	1.51
4	A	395	FAD	C9-C9A	2.20	1.45	1.40
4	B	396	FAD	C8M-C8	2.25	1.55	1.51
4	B	396	FAD	C9-C9A	2.35	1.45	1.40
4	C	397	FAD	C9-C9A	2.35	1.45	1.40
4	B	396	FAD	C8-C7	2.57	1.47	1.41

Continued on next page...

Continued from previous page...

Mol	Chain	Res	Type	Atoms	Z	Observed(Å)	Ideal(Å)
4	C	397	FAD	C8M-C8	2.58	1.56	1.51
4	A	395	FAD	C8-C7	2.59	1.47	1.41
4	C	397	FAD	C5X-N5	2.79	1.39	1.35
4	C	397	FAD	O4B-C1B	2.80	1.44	1.41
4	B	396	FAD	O4B-C1B	2.98	1.45	1.41
4	B	396	FAD	C5X-N5	3.02	1.40	1.35
4	A	395	FAD	O4B-C1B	3.22	1.45	1.41
4	A	395	FAD	C4-N3	3.85	1.40	1.33
4	B	396	FAD	C4-N3	4.29	1.41	1.33
4	C	397	FAD	C4-N3	4.43	1.41	1.33
4	C	397	FAD	C4X-N5	4.64	1.40	1.33
4	B	396	FAD	C4X-N5	4.64	1.40	1.33
4	A	395	FAD	C4X-N5	4.72	1.40	1.33
3	C	997	C2F	O4-C4	4.87	1.36	1.24
3	A	995	C2F	O4-C4	4.90	1.36	1.24
3	B	996	C2F	O4-C4	4.92	1.36	1.24
4	C	397	FAD	C9A-N10	5.00	1.45	1.38
4	B	396	FAD	C9A-N10	6.22	1.47	1.38
4	B	396	FAD	C10-N10	6.64	1.46	1.39
4	A	395	FAD	C10-N10	7.32	1.47	1.39
4	A	395	FAD	C9A-N10	7.43	1.49	1.38
4	C	397	FAD	C10-N10	7.75	1.48	1.39

All (44) bond angle outliers are listed below:

Mol	Chain	Res	Type	Atoms	Z	Observed(°)	Ideal(°)
4	C	397	FAD	C4X-C10-N10	-8.77	115.35	120.52
4	A	395	FAD	C4X-C10-N10	-8.64	115.43	120.52
4	B	396	FAD	C4X-C10-N10	-8.53	115.49	120.52
4	B	396	FAD	C4X-C4-N3	-6.51	114.69	123.59
4	A	395	FAD	C4X-C4-N3	-6.38	114.87	123.59
4	C	397	FAD	C4-C4X-C10	-6.37	115.87	119.94
4	C	397	FAD	C4X-C4-N3	-6.34	114.92	123.59
4	B	396	FAD	C4-C4X-C10	-6.11	116.03	119.94
4	A	395	FAD	C4-C4X-C10	-5.39	116.49	119.94
4	A	395	FAD	C5X-C9A-N10	-4.20	114.43	117.62
4	C	397	FAD	C5X-C9A-N10	-3.85	114.69	117.62
3	B	996	C2F	N3-C2-N1	-3.44	119.89	125.53
3	C	997	C2F	N3-C2-N1	-3.39	119.98	125.53
3	A	995	C2F	N3-C2-N1	-3.38	119.99	125.53
4	B	396	FAD	C5X-C9A-N10	-3.22	115.17	117.62
4	A	395	FAD	C6-C5X-N5	-3.03	115.06	118.96

Continued on next page...

Continued from previous page...

Mol	Chain	Res	Type	Atoms	Z	Observed(°)	Ideal(°)
4	B	396	FAD	O3P-P-O5'	-2.88	95.29	102.94
4	C	397	FAD	C1B-N9A-C4A	-2.56	123.08	126.94
4	A	395	FAD	C4-C4X-N5	-2.23	116.01	118.72
3	A	995	C2F	C4A-C4-N3	-2.10	120.23	123.46
3	C	997	C2F	C4A-C4-N3	-2.05	120.30	123.46
4	B	396	FAD	C1B-N9A-C4A	-2.04	123.87	126.94
3	B	996	C2F	C4A-C4-N3	-2.01	120.37	123.46
4	B	396	FAD	C2B-C1B-N9A	2.02	117.38	114.29
4	B	396	FAD	C8M-C8-C7	2.04	125.21	120.73
4	B	396	FAD	O2'-C2'-C3'	2.05	114.17	109.02
4	A	395	FAD	C2B-C1B-N9A	2.20	117.65	114.29
3	C	997	C2F	C7-C6-N5	2.23	111.26	108.79
4	B	396	FAD	C1'-N10-C9A	2.26	121.40	118.86
3	B	996	C2F	C7-C6-N5	2.32	111.36	108.79
4	A	395	FAD	C8M-C8-C7	2.39	125.99	120.73
4	A	395	FAD	C9A-C5X-N5	2.65	126.27	122.36
3	A	995	C2F	C2-N1-C8A	2.95	121.16	114.54
3	C	997	C2F	C2-N1-C8A	2.96	121.20	114.54
3	B	996	C2F	C2-N1-C8A	2.99	121.26	114.54
3	B	996	C2F	C4-C4A-C8A	3.39	117.13	114.43
3	C	997	C2F	C4-C4A-C8A	3.48	117.20	114.43
3	A	995	C2F	C4-C4A-C8A	3.58	117.28	114.43
3	B	996	C2F	C4-N3-C2	3.74	121.13	115.94
3	C	997	C2F	C4-N3-C2	3.74	121.13	115.94
3	A	995	C2F	C4-N3-C2	3.78	121.18	115.94
4	C	397	FAD	C4-N3-C2	14.13	127.46	115.25
4	A	395	FAD	C4-N3-C2	14.65	127.91	115.25
4	B	396	FAD	C4-N3-C2	15.03	128.24	115.25

There are no chirality outliers.

There are no torsion outliers.

There are no ring outliers.

3 monomers are involved in 10 short contacts:

Mol	Chain	Res	Type	Clashes	Symm-Clashes
3	A	995	C2F	4	0
3	B	996	C2F	1	0
3	C	997	C2F	5	0

5.7 Other polymers

There are no such residues in this entry.

5.8 Polymer linkage issues

There are no chain breaks in this entry.

6 Fit of model and data ⓘ

6.1 Protein, DNA and RNA chains ⓘ

In the following table, the column labelled ‘#RSRZ> 2’ contains the number (and percentage) of RSRZ outliers, followed by percent RSRZ outliers for the chain as percentile scores relative to all X-ray entries and entries of similar resolution. The OWAB column contains the minimum, median, 95th percentile and maximum values of the occupancy-weighted average B-factor per residue. The column labelled ‘Q< 0.9’ lists the number of (and percentage) of residues with an average occupancy less than 0.9.

Mol	Chain	Analysed	<RSRZ>	#RSRZ>2	OWAB(Å ²)	Q<0.9
1	A	282/304 (92%)	1.32	69 (24%) 1 0	18, 36, 63, 69	0
1	B	285/304 (93%)	0.25	13 (4%) 36 34	12, 22, 38, 54	0
1	C	267/304 (87%)	0.06	12 (4%) 37 35	12, 20, 32, 47	0
All	All	834/912 (91%)	0.55	94 (11%) 7 6	12, 25, 55, 69	0

All (94) RSRZ outliers are listed below:

Mol	Chain	Res	Type	RSRZ
1	A	105	ASP	9.7
1	A	140	LYS	9.3
1	A	124	GLY	7.3
1	A	101	THR	7.2
1	A	60	TYR	7.0
1	A	102	ILE	6.0
1	A	129	GLU	5.7
1	A	21	GLY	5.6
1	A	139	LEU	5.5
1	A	79	ASP	5.1
1	A	72	SER	5.1
1	A	109	ASN	5.0
1	A	123	PRO	5.0
1	A	5	HIS	4.9
1	A	138	LEU	4.8
1	A	108	ASN	4.8
1	A	141	GLU	4.7
1	A	107	TRP	4.7
1	C	121	LEU	4.3
1	A	106	TYR	4.2
1	C	128	PRO	4.2
1	A	82	GLY	4.2
1	A	99	LEU	4.1

Continued on next page...

Continued from previous page...

Mol	Chain	Res	Type	RSRZ
1	C	22	GLN	4.1
1	A	77	ILE	4.0
1	A	94	ALA	4.0
1	A	69	ARG	3.8
1	A	61	GLY	3.8
1	A	145	PHE	3.8
1	A	97	ASP	3.7
1	A	131	TYR	3.6
1	A	70	THR	3.6
1	A	71	HIS	3.5
1	B	3	PHE	3.5
1	A	135	LEU	3.4
1	A	143	ALA	3.4
1	A	144	ASP	3.3
1	B	21	GLY	3.3
1	A	95	THR	3.3
1	B	63	ASN	3.2
1	A	98	GLU	3.2
1	A	100	ARG	3.2
1	A	137	THR	3.1
1	A	226	MET	3.1
1	A	4	PHE	3.1
1	C	219	GLN	3.1
1	B	226	MET	3.1
1	A	103	ALA	3.1
1	A	174	ASP	3.0
1	A	222	LYS	3.0
1	A	146	ASP	3.0
1	A	121	LEU	3.0
1	B	68	ASP	2.9
1	A	122	PRO	2.9
1	A	80	ARG	2.9
1	B	108	ASN	2.8
1	A	39	GLN	2.8
1	B	97	ASP	2.7
1	A	169	LEU	2.7
1	A	128	PRO	2.7
1	B	94	ALA	2.6
1	A	93	ASP	2.6
1	A	41	LEU	2.6
1	A	76	GLY	2.6
1	A	132	ALA	2.5

Continued on next page...

Continued from previous page...

Mol	Chain	Res	Type	RSRZ
1	B	79	ASP	2.5
1	C	204	ASP	2.5
1	A	36	GLU	2.4
1	C	244	ASP	2.4
1	A	104	ARG	2.4
1	C	129	GLU	2.4
1	A	178	ASN	2.3
1	A	92	ILE	2.3
1	B	121	LEU	2.3
1	C	105	ASP	2.3
1	A	19	VAL	2.3
1	A	147	ILE	2.2
1	A	78	LYS	2.2
1	B	72	SER	2.2
1	B	62	ALA	2.2
1	A	45	ILE	2.2
1	C	109	ASN	2.2
1	C	120	ASP	2.2
1	C	169	LEU	2.2
1	A	116	ALA	2.2
1	A	29	PHE	2.2
1	C	226	MET	2.2
1	A	193	ARG	2.1
1	A	74	ILE	2.1
1	A	111	ILE	2.1
1	A	46	ASP	2.1
1	A	136	VAL	2.0
1	B	45	ILE	2.0
1	A	134	ASP	2.0

6.2 Non-standard residues in protein, DNA, RNA chains ⓘ

There are no non-standard protein/DNA/RNA residues in this entry.

6.3 Carbohydrates ⓘ

There are no carbohydrates in this entry.

6.4 Ligands [i](#)

In the following table, the Atoms column lists the number of modelled atoms in the group and the number defined in the chemical component dictionary. LLDF column lists the quality of electron density of the group with respect to its neighbouring residues in protein, DNA or RNA chains. The B-factors column lists the minimum, median, 95th percentile and maximum values of B factors of atoms in the group. The column labelled 'Q< 0.9' lists the number of atoms with occupancy less than 0.9.

Mol	Type	Chain	Res	Atoms	RSCC	RSR	LLDF	B-factors(Å ²)	Q<0.9
3	C2F	C	997	33/33	0.62	0.24	1.53	33,46,63,64	0
2	SO4	C	999	5/5	0.95	0.16	0.96	36,36,37,37	5
3	C2F	A	995	33/33	0.78	0.14	0.56	27,32,50,53	0
3	C2F	B	996	33/33	0.82	0.13	0.40	18,24,47,49	0
4	FAD	A	395	53/53	0.84	0.15	-0.26	27,30,49,50	0
4	FAD	C	397	53/53	0.96	0.09	-0.37	13,16,27,28	0
4	FAD	B	396	53/53	0.96	0.09	-0.52	15,18,29,31	0
2	SO4	A	998	5/5	0.96	0.12	-	37,37,38,39	5

6.5 Other polymers [i](#)

There are no such residues in this entry.