



# Full wwPDB X-ray Structure Validation Report ⓘ

Feb 1, 2016 – 07:11 AM GMT

PDB ID : 2ZWA  
Title : Crystal structure of tRNA wybutosine synthesizing enzyme TYW4  
Authors : Suzuki, Y.; Noma, A.; Suzuki, T.; Ishitani, R.; Nureki, O.  
Deposited on : 2008-12-01  
Resolution : 1.70 Å(reported)

This is a Full wwPDB X-ray Structure Validation Report for a publicly released PDB entry.  
We welcome your comments at [validation@mail.wwpdb.org](mailto:validation@mail.wwpdb.org)  
A user guide is available at  
<http://wwpdb.org/validation/2016/XrayValidationReportHelp>  
with specific help available everywhere you see the ⓘ symbol.

---

The following versions of software and data (see [references ⓘ](#)) were used in the production of this report:

MolProbity : 4.02b-467  
Mogul : 1.7 (RC4), CSD as536be (2015)  
Xtriage (Phenix) : 1.9-1692  
EDS : rb-20026688  
Percentile statistics : 20151230.v01 (using entries in the PDB archive December 30th 2015)  
Refmac : 5.8.0135  
CCP4 : 6.5.0  
Ideal geometry (proteins) : Engh & Huber (2001)  
Ideal geometry (DNA, RNA) : Parkinson et al. (1996)  
Validation Pipeline (wwPDB-VP) : trunk26865

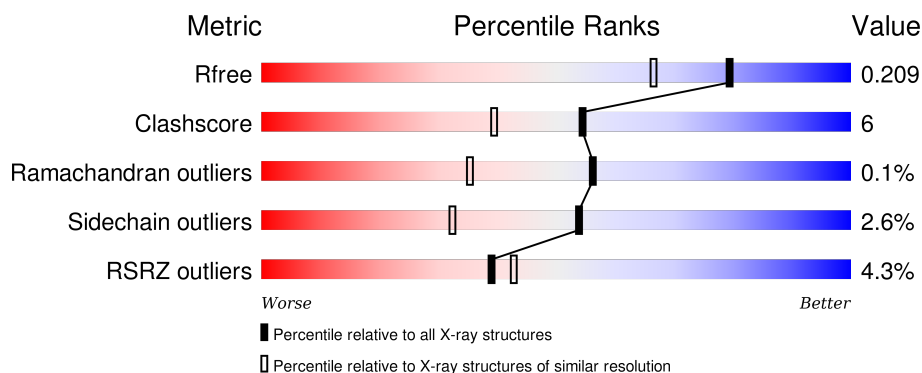
# 1 Overall quality at a glance

The following experimental techniques were used to determine the structure:

## *X-RAY DIFFRACTION*

The reported resolution of this entry is 1.70 Å.

Percentile scores (ranging between 0-100) for global validation metrics of the entry are shown in the following graphic. The table shows the number of entries on which the scores are based.



Metric	Whole archive (#Entries)	Similar resolution (#Entries, resolution range(Å))
$R_{free}$	91344	3190 (1.70-1.70)
Clashscore	102246	3585 (1.70-1.70)
Ramachandran outliers	100387	3527 (1.70-1.70)
Sidechain outliers	100360	3527 (1.70-1.70)
RSRZ outliers	91569	3200 (1.70-1.70)

The table below summarises the geometric issues observed across the polymeric chains and their fit to the electron density. The red, orange, yellow and green segments on the lower bar indicate the fraction of residues that contain outliers for  $\geq 3$ , 2, 1 and 0 types of geometric quality criteria. A grey segment represents the fraction of residues that are not modelled. The numeric value for each fraction is indicated below the corresponding segment, with a dot representing fractions  $\leq 5\%$ . The upper red bar (where present) indicates the fraction of residues that have poor fit to the electron density. The numeric value is given above the bar.

Mol	Chain	Length	Quality of chain
1	A	695	<div> <div>4%</div> <div>84%</div> <div>12%</div> <div>••</div> </div>
1	B	695	<div> <div>4%</div> <div>84%</div> <div>14%</div> <div>•</div> </div>

The following table lists non-polymeric compounds, carbohydrate monomers and non-standard residues in protein, DNA, RNA chains that are outliers for geometric or electron-density-fit criteria:

Mol	Type	Chain	Res	Chirality	Geometry	Clashes	Electron density
3	CIT	B	802	-	-	-	X

## 2 Entry composition [i](#)

There are 5 unique types of molecules in this entry. The entry contains 12533 atoms, of which 0 are hydrogens and 0 are deuteriums.

In the tables below, the ZeroOcc column contains the number of atoms modelled with zero occupancy, the AltConf column contains the number of residues with at least one atom in alternate conformation and the Trace column contains the number of residues modelled with at most 2 atoms.

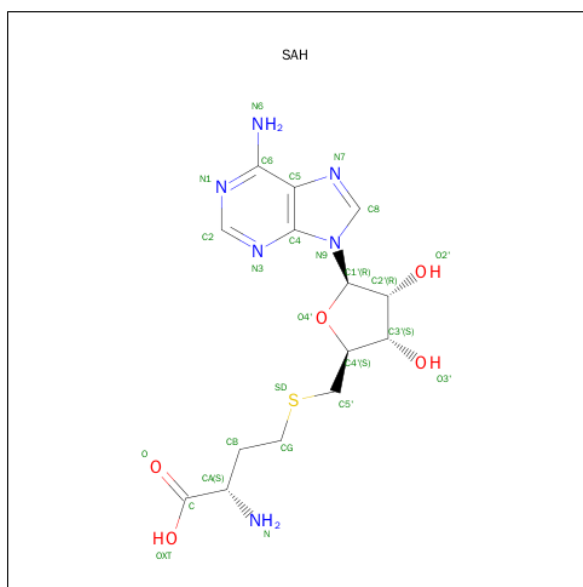
- Molecule 1 is a protein called Leucine carboxyl methyltransferase 2.

Mol	Chain	Residues	Atoms					ZeroOcc	AltConf	Trace
1	A	672	Total	C	N	O	S	0	8	0
			5413	3470	899	1018	26			
1	B	683	Total	C	N	O	S	0	3	0
			5475	3507	915	1027	26			

There are 2 discrepancies between the modelled and reference sequences:

Chain	Residue	Modelled	Actual	Comment	Reference
A	417	LEU	MET	SEE REMARK 999	UNP Q08282
B	417	LEU	MET	SEE REMARK 999	UNP Q08282

- Molecule 2 is S-ADENOSYL-L-HOMOCYSTEINE (three-letter code: SAH) (formula: C<sub>14</sub>H<sub>20</sub>N<sub>6</sub>O<sub>5</sub>S).



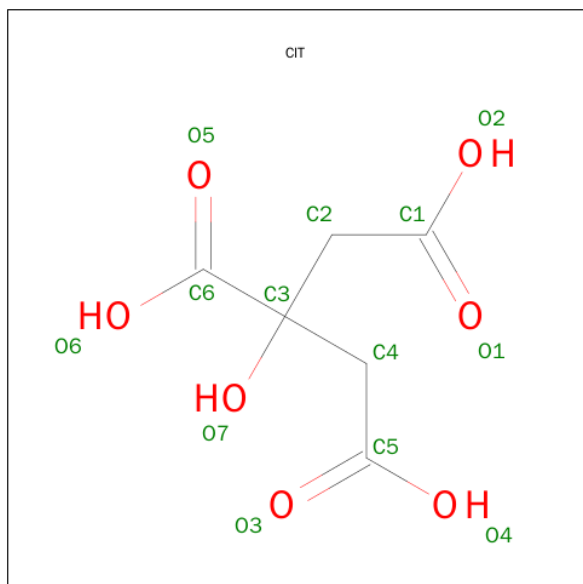
Mol	Chain	Residues	Atoms					ZeroOcc	AltConf
2	A	1	Total	C	N	O	S	0	0
			26	14	6	5	1		

*Continued on next page...*

*Continued from previous page...*

Mol	Chain	Residues	Atoms					ZeroOcc	AltConf
2	B	1	Total	C	N	O	S	0	0
			26	14	6	5	1		

- Molecule 3 is CITRIC ACID (three-letter code: CIT) (formula:  $C_6H_8O_7$ ).



Mol	Chain	Residues	Atoms			ZeroOcc	AltConf
3	A	1	Total	C	O	0	0
			13	6	7		
3	B	1	Total	C	O	0	0
			13	6	7		

- Molecule 4 is 1,2-ETHANEDIOL (three-letter code: EDO) (formula:  $C_2H_6O_2$ ).



Mol	Chain	Residues	Atoms			ZeroOcc	AltConf
4	A	1	Total	C	O	0	0
			4	2	2		
4	A	1	Total	C	O	0	0
			4	2	2		
4	A	1	Total	C	O	0	0
			4	2	2		
4	B	1	Total	C	O	0	0
			4	2	2		
4	B	1	Total	C	O	0	0
			4	2	2		
4	B	1	Total	C	O	0	0
			4	2	2		

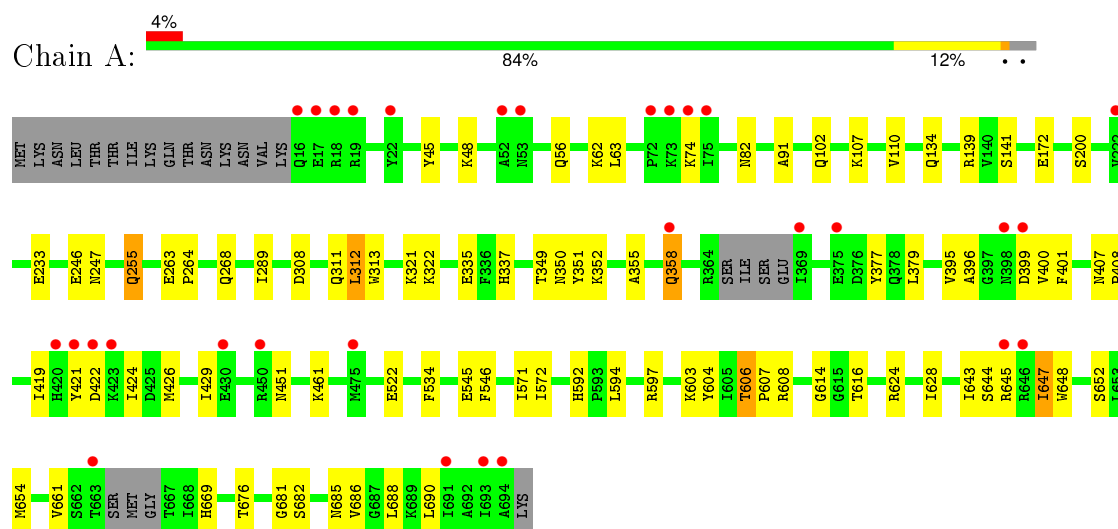
- Molecule 5 is water.

Mol	Chain	Residues	Atoms		ZeroOcc	AltConf
5	A	811	Total	O	0	0
			811	811		
5	B	732	Total	O	0	0
			732	732		

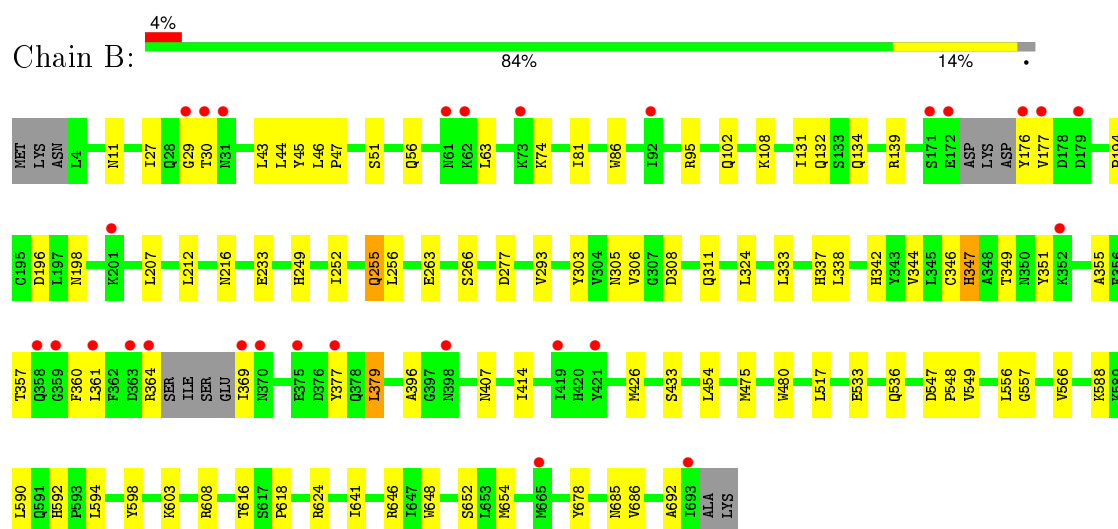
### 3 Residue-property plots [i](#)

These plots are drawn for all protein, RNA and DNA chains in the entry. The first graphic for a chain summarises the proportions of errors displayed in the second graphic. The second graphic shows the sequence view annotated by issues in geometry and electron density. Residues are color-coded according to the number of geometric quality criteria for which they contain at least one outlier: green = 0, yellow = 1, orange = 2 and red = 3 or more. A red dot above a residue indicates a poor fit to the electron density ( $RSRZ > 2$ ). Stretches of 2 or more consecutive residues without any outlier are shown as a green connector. Residues present in the sample, but not in the model, are shown in grey.

#### • Molecule 1: Leucine carboxyl methyltransferase 2



#### • Molecule 1: Leucine carboxyl methyltransferase 2



## 4 Data and refinement statistics

Property	Value	Source
Space group	P 21 21 21	Depositor
Cell constants a, b, c, $\alpha$ , $\beta$ , $\gamma$	76.58Å 89.44Å 236.29Å 90.00° 90.00° 90.00°	Depositor
Resolution (Å)	38.62 – 1.70 38.62 – 1.70	Depositor EDS
% Data completeness (in resolution range)	98.7 (38.62-1.70) 98.4 (38.62-1.70)	Depositor EDS
$R_{merge}$	(Not available)	Depositor
$R_{sym}$	0.08	Depositor
$\langle I/\sigma(I) \rangle$ <sup>1</sup>	2.60 (at 1.71Å)	Xtriage
Refinement program	PHENIX (phenix.refine)	Depositor
R, $R_{free}$	0.170 , 0.211 0.168 , 0.209	Depositor DCC
$R_{free}$ test set	17318 reflections (9.91%)	DCC
Wilson B-factor (Å <sup>2</sup> )	21.3	Xtriage
Anisotropy	0.272	Xtriage
Bulk solvent $k_{sol}$ (e/Å <sup>3</sup> ), $B_{sol}$ (Å <sup>2</sup> )	0.35 , 49.5	EDS
Estimated twinning fraction	No twinning to report.	Xtriage
L-test for twinning <sup>2</sup>	$\langle  L  \rangle = 0.48$ , $\langle L^2 \rangle = 0.31$	Xtriage
Outliers	1 of 174757 reflections (0.001%)	Xtriage
$F_o, F_c$ correlation	0.97	EDS
Total number of atoms	12533	wwPDB-VP
Average B, all atoms (Å <sup>2</sup> )	29.0	wwPDB-VP

Xtriage's analysis on translational NCS is as follows: *The largest off-origin peak in the Patterson function is 3.49% of the height of the origin peak. No significant pseudotranslation is detected.*

<sup>1</sup>Intensities estimated from amplitudes.

<sup>2</sup>Theoretical values of  $\langle |L| \rangle$ ,  $\langle L^2 \rangle$  for acentric reflections are 0.5, 0.375 respectively for untwinned datasets, and 0.333, 0.2 for perfectly twinned datasets.



## 5 Model quality

### 5.1 Standard geometry

Bond lengths and bond angles in the following residue types are not validated in this section: SAH, EDO, CIT

The Z score for a bond length (or angle) is the number of standard deviations the observed value is removed from the expected value. A bond length (or angle) with  $|Z| > 5$  is considered an outlier worth inspection. RMSZ is the root-mean-square of all Z scores of the bond lengths (or angles).

Mol	Chain	Bond lengths		Bond angles	
		RMSZ	$\# Z  > 5$	RMSZ	$\# Z  > 5$
1	A	0.37	0/5552	0.56	0/7506
1	B	0.37	0/5599	0.56	0/7569
All	All	0.37	0/11151	0.56	0/15075

There are no bond length outliers.

There are no bond angle outliers.

There are no chirality outliers.

There are no planarity outliers.

### 5.2 Too-close contacts

In the following table, the Non-H and H(model) columns list the number of non-hydrogen atoms and hydrogen atoms in the chain respectively. The H(added) column lists the number of hydrogen atoms added and optimized by MolProbity. The Clashes column lists the number of clashes within the asymmetric unit, whereas Symm-Clashes lists symmetry related clashes.

Mol	Chain	Non-H	H(model)	H(added)	Clashes	Symm-Clashes
1	A	5413	0	5432	72	0
1	B	5475	0	5500	68	0
2	A	26	0	19	0	0
2	B	26	0	19	0	0
3	A	13	0	5	0	0
3	B	13	0	5	0	0
4	A	12	0	18	0	0
4	B	12	0	18	0	0
5	A	811	0	0	12	0
5	B	732	0	0	9	0
All	All	12533	0	11016	140	0

The all-atom clashscore is defined as the number of clashes found per 1000 atoms (including hydrogen atoms). The all-atom clashscore for this structure is 6.

All (140) close contacts within the same asymmetric unit are listed below, sorted by their clash magnitude.

Atom-1	Atom-2	Interatomic distance (Å)	Clash overlap (Å)
1:A:606:THR:HG22	1:A:608:ARG:H	1.21	1.02
1:B:102:GLN:HE22	1:B:355:ALA:H	0.90	0.88
1:A:592:HIS:HD2	1:A:594:LEU:H	1.16	0.88
1:A:102:GLN:HE22	1:A:355:ALA:H	1.23	0.85
1:B:396:ALA:HB3	1:B:475:MET:HE1	1.60	0.82
1:B:102:GLN:HE22	1:B:355:ALA:N	1.76	0.81
1:B:592:HIS:HD2	1:B:594:LEU:H	1.28	0.81
1:A:349[A]:THR:HG22	1:A:351:TYR:H	1.44	0.80
1:A:246:GLU:OE1	5:A:1141:HOH:O	2.01	0.77
1:B:102:GLN:NE2	1:B:355:ALA:H	1.76	0.77
1:A:644:SER:OG	1:A:647:ILE:HG22	1.85	0.77
1:B:255:GLN:HE21	1:B:255:GLN:H	1.33	0.77
1:A:379:LEU:HD21	1:A:628:ILE:HD12	1.68	0.76
1:A:643:ILE:HG23	1:A:647:ILE:HD13	1.68	0.74
1:A:624:ARG:NH1	1:A:645:ARG:HG3	2.03	0.73
1:B:51:SER:HB2	1:B:132:GLN:HE22	1.53	0.72
1:A:545:GLU:HG2	1:A:604:TYR:CD1	2.24	0.72
1:A:592:HIS:CD2	1:A:594:LEU:H	2.05	0.71
1:A:624:ARG:CZ	1:A:645:ARG:HG3	2.20	0.71
1:B:303:TYR:HB2	1:B:349:THR:HG22	1.72	0.71
1:B:433:SER:HB3	5:B:961:HOH:O	1.88	0.70
1:B:654:MET:H	1:B:685:ASN:HD22	1.39	0.68
1:B:338:LEU:O	1:B:342:HIS:HD2	1.76	0.67
1:B:592:HIS:CD2	1:B:594:LEU:H	2.11	0.65
1:B:27:ILE:C	1:B:29:GLY:H	2.01	0.65
1:B:396:ALA:CB	1:B:475:MET:HE1	2.27	0.65
1:B:308:ASP:H	1:B:311:GLN:HE21	1.45	0.64
1:B:454:LEU:HD11	1:B:475:MET:HE2	1.79	0.63
1:A:606:THR:HG22	1:A:608:ARG:N	2.04	0.63
1:A:545:GLU:HG2	1:A:604:TYR:HD1	1.64	0.63
1:A:396:ALA:HA	1:A:451:ASN:HD22	1.63	0.62
1:B:207:LEU:HD22	1:B:212:LEU:HD12	1.81	0.61
1:A:289:ILE:HD13	5:A:897:HOH:O	2.00	0.61
1:B:255:GLN:NE2	1:B:255:GLN:H	1.99	0.61
1:A:545:GLU:CG	1:A:604:TYR:HD1	2.13	0.61
1:A:255:GLN:H	1:A:255:GLN:HE21	1.48	0.61
1:A:401:PHE:HE2	1:A:429:ILE:HD11	1.65	0.60

*Continued on next page...*

*Continued from previous page...*

Atom-1	Atom-2	Interatomic distance (Å)	Clash overlap (Å)
1:A:606:THR:HG23	1:A:607:PRO:HD2	1.84	0.60
1:A:263:GLU:HG2	1:A:264:PRO:HD2	1.83	0.60
1:B:44:LEU:HD22	1:B:45:TYR:CD1	2.35	0.60
1:A:545:GLU:CG	1:A:604:TYR:CD1	2.85	0.59
1:A:647:ILE:CD1	1:A:688:LEU:HD21	2.32	0.59
1:B:266:SER:OG	1:B:342:HIS:HE1	1.85	0.59
1:B:337:HIS:HD2	1:B:616:THR:OG1	1.86	0.59
1:B:533:GLU:O	1:B:536:GLN:HG3	2.04	0.58
1:A:308:ASP:H	1:A:311:GLN:HE21	1.50	0.58
1:A:308:ASP:H	1:A:311:GLN:NE2	2.02	0.58
1:A:379:LEU:HD21	1:A:628:ILE:CD1	2.35	0.57
1:A:48:LYS:HD3	5:A:905:HOH:O	2.05	0.56
1:B:377:TYR:CD1	1:B:692:ALA:HA	2.40	0.56
1:B:249:HIS:ND1	1:B:347:HIS:HE1	2.03	0.56
1:B:252:ILE:HG22	1:B:346:CYS:HB3	1.87	0.56
1:A:654:MET:H	1:A:685:ASN:HD22	1.54	0.55
1:B:44:LEU:HD23	1:B:44:LEU:O	2.07	0.55
1:A:358:GLN:HG3	5:A:1523:HOH:O	2.06	0.55
1:B:44:LEU:C	1:B:44:LEU:HD23	2.26	0.55
1:B:454:LEU:HD11	1:B:475:MET:CE	2.37	0.55
1:A:395:VAL:HG12	1:A:400:VAL:HG22	1.88	0.55
1:B:654:MET:H	1:B:685:ASN:ND2	2.05	0.54
1:A:233:GLU:HG3	5:A:864:HOH:O	2.07	0.54
1:A:322:LYS:HE3	5:A:1530:HOH:O	2.06	0.54
1:B:396:ALA:CB	1:B:475:MET:CE	2.86	0.53
1:B:588:LYS:HE3	1:B:590:LEU:HD21	1.90	0.53
1:B:652:SER:HB2	1:B:686:VAL:HG23	1.90	0.53
1:B:86:TRP:CZ3	1:B:324:LEU:HD11	2.44	0.53
1:B:608:ARG:NH2	5:B:1246:HOH:O	2.42	0.53
1:B:131:ILE:O	1:B:134:GLN:HG3	2.10	0.51
1:A:652:SER:OG	1:A:686:VAL:HG23	2.11	0.51
1:B:308:ASP:H	1:B:311:GLN:NE2	2.08	0.51
1:A:45:TYR:CE1	1:A:82:ASN:HB3	2.47	0.50
1:A:647:ILE:HD12	1:A:688:LEU:HD21	1.93	0.50
1:B:369:ILE:N	5:B:1267:HOH:O	2.44	0.50
1:A:337:HIS:HD2	1:A:616:THR:OG1	1.94	0.50
1:A:522:GLU:HG3	5:A:1357:HOH:O	2.12	0.49
1:B:379:LEU:HD22	1:B:641:ILE:HG22	1.94	0.49
1:B:176:TYR:N	5:B:1043:HOH:O	2.46	0.49
1:A:91:ALA:HA	1:A:312:LEU:HD11	1.95	0.48
1:B:549:VAL:HG12	5:B:1254:HOH:O	2.12	0.48

*Continued on next page...*

*Continued from previous page...*

Atom-1	Atom-2	Interatomic distance (Å)	Clash overlap (Å)
1:A:624:ARG:NH2	1:A:645:ARG:HG3	2.28	0.48
1:A:545:GLU:HG3	1:A:546:PHE:N	2.28	0.48
1:B:81:ILE:HA	1:B:678:TYR:CE1	2.49	0.47
1:B:266:SER:OG	1:B:342:HIS:CE1	2.66	0.47
1:A:647:ILE:HD11	1:A:688:LEU:HD21	1.95	0.47
1:A:614:GLY:HA2	5:A:933:HOH:O	2.14	0.47
1:B:333:LEU:HB3	1:B:598:TYR:CE2	2.49	0.47
1:A:624:ARG:NH1	1:A:645:ARG:CG	2.77	0.46
1:B:27:ILE:C	1:B:29:GLY:N	2.69	0.46
1:A:263:GLU:HA	1:A:648:TRP:CZ2	2.50	0.46
1:A:379:LEU:CD2	1:A:628:ILE:HD12	2.41	0.46
1:B:27:ILE:HA	1:B:30:THR:OG1	2.15	0.46
1:A:419:ILE:HG12	1:A:424:ILE:HD13	1.97	0.46
1:A:268:GLN:HE21	1:A:681:GLY:HA3	1.81	0.45
1:A:268:GLN:NE2	1:A:681:GLY:HA3	2.30	0.45
1:A:654:MET:H	1:A:685:ASN:ND2	2.13	0.45
1:B:566:VAL:HG21	1:B:618:PRO:HD3	1.99	0.45
1:B:46:LEU:N	1:B:47:PRO:CD	2.80	0.45
1:B:379:LEU:HD22	1:B:641:ILE:CG2	2.47	0.45
1:A:401:PHE:CE2	1:A:429:ILE:HD11	2.50	0.45
1:A:107:LYS:HE2	5:A:1439:HOH:O	2.16	0.45
1:B:43:LEU:HD11	1:B:74:LYS:HA	1.99	0.45
1:B:305:ASN:OD1	1:B:361:LEU:HD12	2.17	0.45
1:A:395:VAL:O	1:A:395:VAL:HG23	2.17	0.44
1:B:194:PRO:HD2	5:B:1206:HOH:O	2.16	0.44
1:A:349[A]:THR:CG2	1:A:351:TYR:CD2	3.00	0.44
1:A:377:TYR:HB3	1:A:690:LEU:HD11	1.98	0.44
1:B:108:LYS:HD3	5:B:1220:HOH:O	2.18	0.44
1:A:461:LYS:NZ	5:A:1261:HOH:O	2.50	0.44
1:A:349[A]:THR:HG22	1:A:350:ASN:N	2.33	0.44
1:B:252:ILE:CG2	1:B:346:CYS:HB3	2.46	0.44
1:B:263:GLU:HA	1:B:648:TRP:CZ2	2.54	0.43
1:A:56:GLN:O	1:A:63:LEU:HD12	2.19	0.43
1:B:624:ARG:HG2	1:B:648:TRP:CD2	2.54	0.43
1:A:572:ILE:HD12	1:A:572:ILE:N	2.33	0.43
1:B:349:THR:HG23	1:B:351:TYR:H	1.84	0.42
1:A:358:GLN:H	1:A:358:GLN:CD	2.23	0.42
1:A:62:LYS:HD2	5:A:1285:HOH:O	2.19	0.42
1:A:335[B]:GLU:HG3	1:A:676:THR:O	2.18	0.42
1:A:247:ASN:HA	1:A:351:TYR:CD2	2.54	0.42
1:B:547:ASP:HA	1:B:548:PRO:HD3	1.93	0.42

*Continued on next page...*

Continued from previous page...

Atom-1	Atom-2	Interatomic distance (Å)	Clash overlap (Å)
1:B:196:ASP:OD1	1:B:198:ASN:HB2	2.19	0.42
1:B:556:LEU:C	1:B:556:LEU:HD13	2.40	0.42
1:A:110:VAL:HG22	1:A:141[A]:SER:OG	2.19	0.42
1:B:44:LEU:C	1:B:44:LEU:CD2	2.88	0.42
1:A:421:TYR:CZ	1:A:422:ASP:HB3	2.55	0.42
1:B:256:LEU:HD11	1:B:344:VAL:HB	2.01	0.41
1:A:661:VAL:HG23	1:A:669:HIS:HB2	2.01	0.41
1:A:534:PHE:CE1	1:A:571:ILE:HD11	2.55	0.41
1:A:313:TRP:CE2	1:A:321:LYS:HE2	2.56	0.41
1:A:606:THR:HG23	1:A:607:PRO:CD	2.50	0.41
1:B:56:GLN:O	1:B:63:LEU:HD12	2.21	0.41
1:B:414:ILE:HD11	1:B:480:TRP:CZ2	2.55	0.41
1:B:347:HIS:HD2	5:B:728:HOH:O	2.04	0.41
1:B:556:LEU:HD13	1:B:557:GLY:N	2.36	0.41
1:A:408:PRO:HA	5:A:1373:HOH:O	2.20	0.41
1:B:293:VAL:CG2	1:B:306:VAL:HG11	2.51	0.41
1:A:421:TYR:CE1	1:A:422:ASP:HB3	2.56	0.41
1:A:647:ILE:HD12	1:A:688:LEU:CD2	2.51	0.40
1:A:401:PHE:HE2	1:A:429:ILE:CD1	2.34	0.40
1:B:686:VAL:HG21	5:B:1046:HOH:O	2.20	0.40
1:B:357:THR:OG1	1:B:360:PHE:HD1	2.04	0.40

There are no symmetry-related clashes.

## 5.3 Torsion angles [i](#)

### 5.3.1 Protein backbone [i](#)

In the following table, the Percentiles column shows the percent Ramachandran outliers of the chain as a percentile score with respect to all X-ray entries followed by that with respect to entries of similar resolution.

The Analysed column shows the number of residues for which the backbone conformation was analysed, and the total number of residues.

Mol	Chain	Analysed	Favoured	Allowed	Outliers	Percentiles	
1	A	674/695 (97%)	655 (97%)	19 (3%)	0	100	100
1	B	680/695 (98%)	663 (98%)	16 (2%)	1 (0%)	56	35
All	All	1354/1390 (97%)	1318 (97%)	35 (3%)	1 (0%)	56	35

All (1) Ramachandran outliers are listed below:

Mol	Chain	Res	Type
1	B	407	ASN

### 5.3.2 Protein sidechains ⓘ

In the following table, the Percentiles column shows the percent sidechain outliers of the chain as a percentile score with respect to all X-ray entries followed by that with respect to entries of similar resolution.

The Analysed column shows the number of residues for which the sidechain conformation was analysed, and the total number of residues.

Mol	Chain	Analysed	Rotameric	Outliers	Percentiles	
1	A	616/630 (98%)	599 (97%)	17 (3%)	51	29
1	B	622/630 (99%)	607 (98%)	15 (2%)	57	36
All	All	1238/1260 (98%)	1206 (97%)	32 (3%)	54	32

All (32) residues with a non-rotameric sidechain are listed below:

Mol	Chain	Res	Type
1	A	74	LYS
1	A	134	GLN
1	A	139	ARG
1	A	172	GLU
1	A	200	SER
1	A	255	GLN
1	A	312	LEU
1	A	352	LYS
1	A	358	GLN
1	A	399	ASP
1	A	407	ASN
1	A	426	MET
1	A	597	ARG
1	A	603	LYS
1	A	606	THR
1	A	647	ILE
1	A	682	SER
1	B	11	ASN
1	B	95	ARG
1	B	139	ARG
1	B	177	VAL
1	B	216	ASN

*Continued on next page...*

*Continued from previous page...*

Mol	Chain	Res	Type
1	B	233	GLU
1	B	255	GLN
1	B	277	ASP
1	B	347	HIS
1	B	364	ARG
1	B	379	LEU
1	B	426	MET
1	B	517	LEU
1	B	603	LYS
1	B	646	ARG

Some sidechains can be flipped to improve hydrogen bonding and reduce clashes. All (29) such sidechains are listed below:

Mol	Chain	Res	Type
1	A	53	ASN
1	A	56	GLN
1	A	102	GLN
1	A	134	GLN
1	A	137	HIS
1	A	255	GLN
1	A	276	ASN
1	A	297	ASN
1	A	311	GLN
1	A	337	HIS
1	A	407	ASN
1	A	416	GLN
1	A	451	ASN
1	A	592	HIS
1	A	685	ASN
1	B	11	ASN
1	B	102	GLN
1	B	137	HIS
1	B	181	ASN
1	B	255	GLN
1	B	281	GLN
1	B	297	ASN
1	B	311	GLN
1	B	337	HIS
1	B	342	HIS
1	B	347	HIS
1	B	416	GLN
1	B	592	HIS

*Continued on next page...*

*Continued from previous page...*

Mol	Chain	Res	Type
1	B	685	ASN

### 5.3.3 RNA ⓘ

There are no RNA molecules in this entry.

## 5.4 Non-standard residues in protein, DNA, RNA chains ⓘ

There are no non-standard protein/DNA/RNA residues in this entry.

## 5.5 Carbohydrates ⓘ

There are no carbohydrates in this entry.

## 5.6 Ligand geometry ⓘ

10 ligands are modelled in this entry.

In the following table, the Counts columns list the number of bonds (or angles) for which Mogul statistics could be retrieved, the number of bonds (or angles) that are observed in the model and the number of bonds (or angles) that are defined in the chemical component dictionary. The Link column lists molecule types, if any, to which the group is linked. The Z score for a bond length (or angle) is the number of standard deviations the observed value is removed from the expected value. A bond length (or angle) with  $|Z| > 2$  is considered an outlier worth inspection. RMSZ is the root-mean-square of all Z scores of the bond lengths (or angles).

Mol	Type	Chain	Res	Link	Bond lengths			Bond angles		
					Counts	RMSZ	$\# Z  > 2$	Counts	RMSZ	$\# Z  > 2$
4	EDO	A	696	-	3,3,3	0.52	0	2,2,2	0.37	0
4	EDO	A	697	-	3,3,3	0.65	0	2,2,2	0.27	0
4	EDO	A	698	-	3,3,3	0.45	0	2,2,2	0.56	0
2	SAH	A	801	-	20,28,28	1.00	2 (10%)	19,40,40	3.31	7 (36%)
3	CIT	A	802	-	3,12,12	1.23	0	3,17,17	1.61	1 (33%)
4	EDO	B	696	-	3,3,3	0.45	0	2,2,2	0.43	0
4	EDO	B	697	-	3,3,3	0.57	0	2,2,2	0.31	0
4	EDO	B	698	-	3,3,3	0.50	0	2,2,2	0.56	0
2	SAH	B	801	-	20,28,28	1.05	2 (10%)	19,40,40	3.04	3 (15%)
3	CIT	B	802	-	3,12,12	1.10	0	3,17,17	1.18	0

In the following table, the Chirals column lists the number of chiral outliers, the number of chiral



centers analysed, the number of these observed in the model and the number defined in the chemical component dictionary. Similar counts are reported in the Torsion and Rings columns. '-' means no outliers of that kind were identified.

Mol	Type	Chain	Res	Link	Chirals	Torsions	Rings
4	EDO	A	696	-	-	0/1/1/1	0/0/0/0
4	EDO	A	697	-	-	0/1/1/1	0/0/0/0
4	EDO	A	698	-	-	0/1/1/1	0/0/0/0
2	SAH	A	801	-	-	0/7/31/31	0/3/3/3
3	CIT	A	802	-	-	0/6/16/16	0/0/0/0
4	EDO	B	696	-	-	0/1/1/1	0/0/0/0
4	EDO	B	697	-	-	0/1/1/1	0/0/0/0
4	EDO	B	698	-	-	0/1/1/1	0/0/0/0
2	SAH	B	801	-	-	0/7/31/31	0/3/3/3
3	CIT	B	802	-	-	0/6/16/16	0/0/0/0

All (4) bond length outliers are listed below:

Mol	Chain	Res	Type	Atoms	Z	Observed(Å)	Ideal(Å)
2	B	801	SAH	C2-N1	2.23	1.38	1.33
2	A	801	SAH	C2-N1	2.32	1.38	1.33
2	A	801	SAH	C2-N3	3.38	1.38	1.32
2	B	801	SAH	C2-N3	3.61	1.38	1.32

All (11) bond angle outliers are listed below:

Mol	Chain	Res	Type	Atoms	Z	Observed(°)	Ideal(°)
2	A	801	SAH	N3-C2-N1	-12.31	119.47	128.89
2	B	801	SAH	N3-C2-N1	-11.87	119.81	128.89
2	A	801	SAH	C2'-C1'-N9	-5.01	106.63	114.29
2	B	801	SAH	C5'-SD-CG	-3.47	91.99	102.41
2	B	801	SAH	C1'-N9-C4	-2.51	123.15	126.94
2	A	801	SAH	C1'-N9-C4	-2.43	123.27	126.94
3	A	802	CIT	C3-C4-C5	-2.23	111.39	114.96
2	A	801	SAH	C4'-O4'-C1'	-2.23	107.27	109.72
2	A	801	SAH	C5'-SD-CG	-2.08	96.16	102.41
2	A	801	SAH	C4-C5-N7	-2.02	107.62	109.48
2	A	801	SAH	O4'-C1'-N9	2.59	113.51	108.10

There are no chirality outliers.

There are no torsion outliers.

There are no ring outliers.

No monomer is involved in short contacts.

## 5.7 Other polymers

There are no such residues in this entry.

## 5.8 Polymer linkage issues

There are no chain breaks in this entry.

## 6 Fit of model and data ⓘ

### 6.1 Protein, DNA and RNA chains ⓘ

In the following table, the column labelled ‘#RSRZ> 2’ contains the number (and percentage) of RSRZ outliers, followed by percent RSRZ outliers for the chain as percentile scores relative to all X-ray entries and entries of similar resolution. The OWAB column contains the minimum, median, 95<sup>th</sup> percentile and maximum values of the occupancy-weighted average B-factor per residue. The column labelled ‘Q< 0.9’ lists the number of (and percentage) of residues with an average occupancy less than 0.9.

Mol	Chain	Analysed	<RSRZ>	#RSRZ>2	OWAB(Å <sup>2</sup> )	Q<0.9
1	A	672/695 (96%)	0.07	30 (4%) 37 41	12, 23, 51, 81	0
1	B	683/695 (98%)	0.09	28 (4%) 41 44	12, 26, 54, 75	0
All	All	1355/1390 (97%)	0.08	58 (4%) 39 43	12, 24, 54, 81	0

All (58) RSRZ outliers are listed below:

Mol	Chain	Res	Type	RSRZ
1	A	421	TYR	10.9
1	B	421	TYR	7.4
1	B	29	GLY	6.4
1	B	176	TYR	5.7
1	B	358	GLN	5.6
1	A	18	ARG	5.0
1	A	17	GLU	4.6
1	A	73	LYS	4.4
1	B	364	ARG	4.4
1	A	694	ALA	4.3
1	A	19	ARG	4.0
1	A	663	THR	3.9
1	A	16	GLN	3.9
1	B	363	ASP	3.7
1	B	30	THR	3.6
1	B	369	ILE	3.6
1	A	693	ILE	3.5
1	A	52	ALA	3.5
1	B	177	VAL	3.4
1	B	31	ASN	3.4
1	A	75	ILE	3.3
1	A	72	PRO	3.2
1	B	62	LYS	3.2
1	B	370	ASN	3.1

*Continued on next page...*

*Continued from previous page...*

Mol	Chain	Res	Type	RSRZ
1	A	423	LYS	3.0
1	A	398	ASN	3.0
1	A	646	ARG	2.9
1	B	665	MET	2.9
1	A	74	LYS	2.9
1	B	61	ASN	2.7
1	B	201	LYS	2.7
1	A	422	ASP	2.7
1	B	92	ILE	2.6
1	A	375	GLU	2.5
1	B	171	SER	2.5
1	B	361	LEU	2.5
1	A	53	ASN	2.5
1	B	398	ASN	2.5
1	B	359	GLY	2.5
1	A	645	ARG	2.4
1	B	179	ASP	2.4
1	B	693	ILE	2.4
1	A	222	VAL	2.4
1	A	420	HIS	2.3
1	A	430	GLU	2.3
1	A	399	ASP	2.3
1	A	369	ILE	2.3
1	B	73	LYS	2.3
1	B	352	LYS	2.2
1	A	358	GLN	2.2
1	B	377	TYR	2.2
1	B	375	GLU	2.2
1	B	172	GLU	2.2
1	B	419	ILE	2.2
1	A	691	ILE	2.1
1	A	22	TYR	2.1
1	A	450	ARG	2.1
1	A	475	MET	2.0

## 6.2 Non-standard residues in protein, DNA, RNA chains ⓘ

There are no non-standard protein/DNA/RNA residues in this entry.

### 6.3 Carbohydrates [i](#)

There are no carbohydrates in this entry.

### 6.4 Ligands [i](#)

In the following table, the Atoms column lists the number of modelled atoms in the group and the number defined in the chemical component dictionary. LLDF column lists the quality of electron density of the group with respect to its neighbouring residues in protein, DNA or RNA chains. The B-factors column lists the minimum, median, 95<sup>th</sup> percentile and maximum values of B factors of atoms in the group. The column labelled 'Q< 0.9' lists the number of atoms with occupancy less than 0.9.

Mol	Type	Chain	Res	Atoms	RSCC	RSR	LLDF	B-factors( $\text{\AA}^2$ )	Q<0.9
3	CIT	B	802	13/13	0.95	0.14	7.18	21,28,34,42	0
3	CIT	A	802	13/13	0.92	0.13	1.06	24,32,51,54	0
4	EDO	A	698	4/4	0.93	0.13	1.00	24,27,31,31	0
4	EDO	B	696	4/4	0.99	0.10	0.86	17,19,21,21	0
4	EDO	B	698	4/4	0.93	0.12	0.63	34,34,41,41	0
2	SAH	A	801	26/26	0.97	0.10	0.43	13,17,19,21	0
4	EDO	B	697	4/4	0.97	0.08	-0.19	22,22,24,26	0
4	EDO	A	697	4/4	0.94	0.11	-0.28	23,24,24,27	0
2	SAH	B	801	26/26	0.92	0.09	-0.49	23,29,35,43	0
4	EDO	A	696	4/4	0.98	0.08	-0.57	19,19,22,23	0

### 6.5 Other polymers [i](#)

There are no such residues in this entry.