



# Full wwPDB X-ray Structure Validation Report ⓘ

Oct 13, 2016 – 03:36 PM EDT

PDB ID : 3ZZQ  
Title : Engineered 12-subunit Bacillus subtilis trp RNA-binding attenuation protein (TRAP)  
Authors : Chen, C.; Smits, C.; Dodson, G.G.; Shevtsov, M.B.; Merlino, N.; Gollnick, P.; Antson, A.A.  
Deposited on : 2011-09-02  
Resolution : 1.75 Å(reported)

This is a Full wwPDB X-ray Structure Validation Report for a publicly released PDB entry.

We welcome your comments at [validation@mail.wwpdb.org](mailto:validation@mail.wwpdb.org)

A user guide is available at

<http://wwpdb.org/validation/2016/XrayValidationReportHelp>

with specific help available everywhere you see the ⓘ symbol.

---

The following versions of software and data (see [references ⓘ](#)) were used in the production of this report:

MolProbity : 4.02b-467  
Mogul : 1.7.1 (RC1), CSD as537be (2016)  
Xtriage (Phenix) : 1.9-1692  
EDS : rb-20027939  
Percentile statistics : 20151230.v01 (using entries in the PDB archive December 30th 2015)  
Refmac : 5.8.0135  
CCP4 : 6.5.0  
Ideal geometry (proteins) : Engh & Huber (2001)  
Ideal geometry (DNA, RNA) : Parkinson et al. (1996)  
Validation Pipeline (wwPDB-VP) : rb-20027939

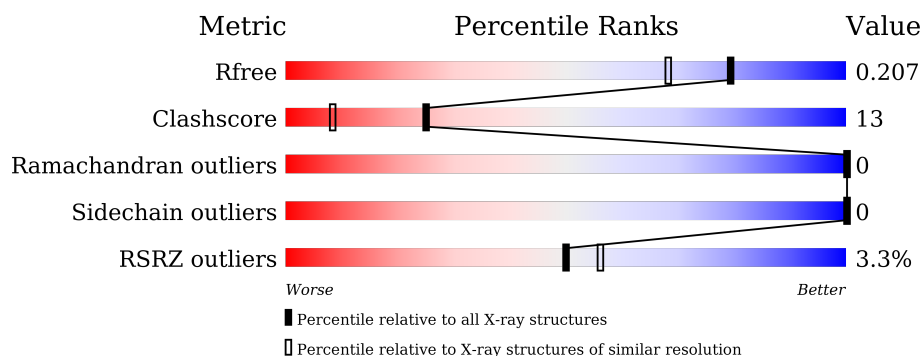
# 1 Overall quality at a glance ⓘ

The following experimental techniques were used to determine the structure:

*X-RAY DIFFRACTION*

The reported resolution of this entry is 1.75 Å.

Percentile scores (ranging between 0-100) for global validation metrics of the entry are shown in the following graphic. The table shows the number of entries on which the scores are based.



Metric	Whole archive (#Entries)	Similar resolution (#Entries, resolution range(Å))
$R_{free}$	91344	1609 (1.76-1.76)
Clashscore	102246	1730 (1.76-1.76)
Ramachandran outliers	100387	1711 (1.76-1.76)
Sidechain outliers	100360	1711 (1.76-1.76)
RSRZ outliers	91569	1610 (1.76-1.76)

The table below summarises the geometric issues observed across the polymeric chains and their fit to the electron density. The red, orange, yellow and green segments on the lower bar indicate the fraction of residues that contain outliers for  $\geq 3$ , 2, 1 and 0 types of geometric quality criteria. A grey segment represents the fraction of residues that are not modelled. The numeric value for each fraction is indicated below the corresponding segment, with a dot representing fractions  $\leq 5\%$ . The upper red bar (where present) indicates the fraction of residues that have poor fit to the electron density. The numeric value is given above the bar.

Mol	Chain	Length	Quality of chain
1	A	65	<div> <div>2%</div> <div>77% 23%</div> </div>
1	B	65	<div> <div>3%</div> <div>88% 12%</div> </div>
1	C	65	<div> <div>3%</div> <div>85% 15%</div> </div>
1	D	65	<div> <div>5%</div> <div>80% 18% .</div> </div>
1	E	65	<div> <div>3%</div> <div>80% 20%</div> </div>
1	F	65	<div> <div>5%</div> <div>83% 15% .</div> </div>

The following table lists non-polymeric compounds, carbohydrate monomers and non-standard residues in protein, DNA, RNA chains that are outliers for geometric or electron-density-fit criteria:

Mol	Type	Chain	Res	Chirality	Geometry	Clashes	Electron density
2	TRP	A	91	-	-	-	X
2	TRP	B	91	-	-	-	X
2	TRP	C	91	-	-	-	X
2	TRP	F	91	-	-	-	X

## 2 Entry composition [i](#)

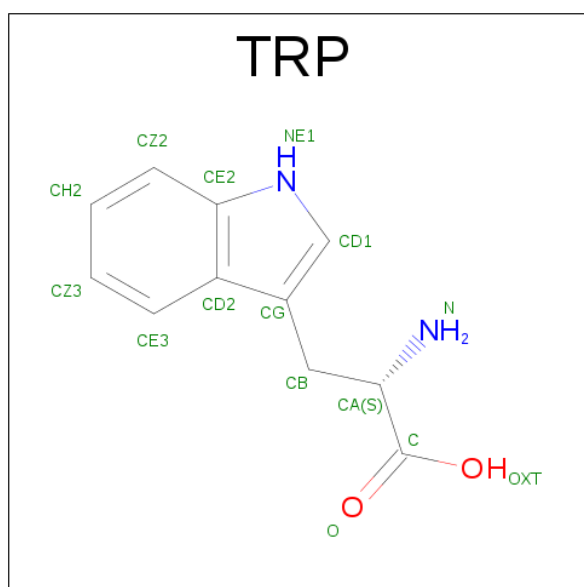
There are 3 unique types of molecules in this entry. The entry contains 3634 atoms, of which 0 are hydrogens and 0 are deuteriums.

In the tables below, the ZeroOcc column contains the number of atoms modelled with zero occupancy, the AltConf column contains the number of residues with at least one atom in alternate conformation and the Trace column contains the number of residues modelled with at most 2 atoms.

- Molecule 1 is a protein called TRANSCRIPTION ATTENUATION PROTEIN MTRB.

Mol	Chain	Residues	Atoms					ZeroOcc	AltConf	Trace
1	A	65	Total	C	N	O	S	0	4	0
			523	333	88	101	1			
1	B	65	Total	C	N	O	S	0	2	0
			513	325	88	99	1			
1	C	65	Total	C	N	O	S	0	6	0
			526	335	89	101	1			
1	D	65	Total	C	N	O	S	0	5	0
			531	341	88	101	1			
1	E	65	Total	C	N	O	S	0	5	0
			525	333	88	103	1			
1	F	65	Total	C	N	O	S	0	7	0
			534	343	89	101	1			

- Molecule 2 is TRYPTOPHAN (three-letter code: TRP) (formula:  $C_{11}H_{12}N_2O_2$ ).



Mol	Chain	Residues	Atoms				ZeroOcc	AltConf
2	A	1	Total	C	N	O	0	0
			15	11	2	2		
2	A	1	Total	C	N	O	0	0
			15	11	2	2		
2	B	1	Total	C	N	O	0	0
			15	11	2	2		
2	B	1	Total	C	N	O	0	0
			15	11	2	2		
2	C	1	Total	C	N	O	0	0
			15	11	2	2		
2	C	1	Total	C	N	O	0	0
			15	11	2	2		
2	D	1	Total	C	N	O	0	0
			15	11	2	2		
2	D	1	Total	C	N	O	0	0
			15	11	2	2		
2	E	1	Total	C	N	O	0	0
			15	11	2	2		
2	E	1	Total	C	N	O	0	0
			15	11	2	2		
2	F	1	Total	C	N	O	0	0
			15	11	2	2		
2	F	1	Total	C	N	O	0	0
			15	11	2	2		

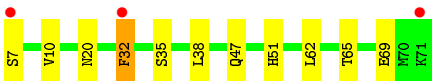
- Molecule 3 is water.

Mol	Chain	Residues	Atoms		ZeroOcc	AltConf
3	A	54	Total	O	0	0
			54	54		
3	B	51	Total	O	0	0
			51	51		
3	C	55	Total	O	0	0
			55	55		
3	D	47	Total	O	0	0
			47	47		
3	E	47	Total	O	0	0
			47	47		
3	F	48	Total	O	0	0
			48	48		



- Molecule 1: TRANSCRIPTION ATTENUATION PROTEIN MTRB





## 4 Data and refinement statistics

Property	Value	Source
Space group	I 2 3	Depositor
Cell constants a, b, c, $\alpha$ , $\beta$ , $\gamma$	146.35Å 146.35Å 146.35Å 90.00° 90.00° 90.00°	Depositor
Resolution (Å)	25.00 – 1.75 46.28 – 1.58	Depositor EDS
% Data completeness (in resolution range)	100.0 (25.00-1.75) 99.9 (46.28-1.58)	Depositor EDS
$R_{merge}$	0.09	Depositor
$R_{sym}$	(Not available)	Depositor
$\langle I/\sigma(I) \rangle$ <sup>1</sup>	1.43 (at 1.58Å)	Xtriage
Refinement program	REFMAC 5.6.0058	Depositor
R, $R_{free}$	0.173 , 0.190 0.184 , 0.207	Depositor DCC
$R_{free}$ test set	1030 reflections (2.01%)	DCC
Wilson B-factor (Å <sup>2</sup> )	22.8	Xtriage
Anisotropy	0.000	Xtriage
Bulk solvent $k_{sol}$ (e/Å <sup>3</sup> ), $B_{sol}$ (Å <sup>2</sup> )	0.34 , 31.8	EDS
L-test for twinning <sup>2</sup>	$\langle  L  \rangle = 0.51$ , $\langle L^2 \rangle = 0.34$	Xtriage
Estimated twinning fraction	0.490 for -l,-k,-h	Xtriage
$F_o, F_c$ correlation	0.97	EDS
Total number of atoms	3634	wwPDB-VP
Average B, all atoms (Å <sup>2</sup> )	29.0	wwPDB-VP

Xtriage's analysis on translational NCS is as follows: *The largest off-origin peak in the Patterson function is 7.14% of the height of the origin peak. No significant pseudotranslation is detected.*

<sup>1</sup>Intensities estimated from amplitudes.

<sup>2</sup>Theoretical values of  $\langle |L| \rangle$ ,  $\langle L^2 \rangle$  for acentric reflections are 0.5, 0.333 respectively for untwinned datasets, and 0.375, 0.2 for perfectly twinned datasets.



## 5 Model quality

### 5.1 Standard geometry

The Z score for a bond length (or angle) is the number of standard deviations the observed value is removed from the expected value. A bond length (or angle) with  $|Z| > 5$  is considered an outlier worth inspection. RMSZ is the root-mean-square of all Z scores of the bond lengths (or angles).

Mol	Chain	Bond lengths		Bond angles	
		RMSZ	# Z  >5	RMSZ	# Z  >5
1	A	0.44	0/542	0.56	0/728
1	B	0.35	0/526	0.56	0/706
1	C	0.36	0/548	0.57	0/736
1	D	0.32	0/554	0.56	0/744
1	E	0.37	0/547	0.60	0/735
1	F	0.43	0/560	0.57	0/752
All	All	0.38	0/3277	0.57	0/4401

Chiral center outliers are detected by calculating the chiral volume of a chiral center and verifying if the center is modelled as a planar moiety or with the opposite hand. A planarity outlier is detected by checking planarity of atoms in a peptide group, atoms in a mainchain group or atoms of a sidechain that are expected to be planar.

Mol	Chain	#Chirality outliers	#Planarity outliers
1	D	0	2
1	F	0	2
All	All	0	4

There are no bond length outliers.

There are no bond angle outliers.

There are no chirality outliers.

All (4) planarity outliers are listed below:

Mol	Chain	Res	Type	Group
1	D	32[A]	PHE	Mainchain
1	D	32[B]	PHE	Mainchain
1	F	32[A]	PHE	Mainchain
1	F	32[B]	PHE	Mainchain

## 5.2 Too-close contacts ⓘ

In the following table, the Non-H and H(model) columns list the number of non-hydrogen atoms and hydrogen atoms in the chain respectively. The H(added) column lists the number of hydrogen atoms added and optimized by MolProbity. The Clashes column lists the number of clashes within the asymmetric unit, whereas Symm-Clashes lists symmetry related clashes.

Mol	Chain	Non-H	H(model)	H(added)	Clashes	Symm-Clashes
1	A	523	0	536	23	0
1	B	513	0	521	20	0
1	C	526	0	543	25	0
1	D	531	0	545	13	0
1	E	525	0	536	10	0
1	F	534	0	552	11	0
2	A	30	0	18	1	0
2	B	30	0	18	1	0
2	C	30	0	18	1	0
2	D	30	0	18	2	0
2	E	30	0	18	4	0
2	F	30	0	18	2	0
3	A	54	0	0	4	0
3	B	51	0	0	3	0
3	C	55	0	0	1	2
3	D	47	0	0	0	0
3	E	47	0	0	0	0
3	F	48	0	0	1	2
All	All	3634	0	3341	83	2

The all-atom clashscore is defined as the number of clashes found per 1000 atoms (including hydrogen atoms). The all-atom clashscore for this structure is 13.

All (83) close contacts within the same asymmetric unit are listed below, sorted by their clash magnitude.

Atom-1	Atom-2	Interatomic distance (Å)	Clash overlap (Å)
1:C:24[B]:LEU:HD21	1:C:32:PHE:CE1	1.56	1.38
1:C:24[B]:LEU:CD2	1:C:32:PHE:CD1	2.09	1.36
1:C:24[B]:LEU:CD2	1:C:32:PHE:CE1	2.25	1.13
1:F:20[B]:ASN:ND2	3:F:2012:HOH:O	1.87	1.08
1:C:24[B]:LEU:HD21	1:C:32:PHE:CD1	1.80	1.07
1:C:24[B]:LEU:CD2	1:C:32:PHE:HD1	1.63	0.94
1:C:24[B]:LEU:HD23	1:C:32:PHE:CD1	2.04	0.89
1:C:24[B]:LEU:HD23	1:C:32:PHE:HD1	1.38	0.86
1:A:62:LEU:HD11	1:A:69:GLU:OE2	1.77	0.84

*Continued on next page...*

*Continued from previous page...*

Atom-1	Atom-2	Interatomic distance (Å)	Clash overlap (Å)
1:A:39:ASP:OD1	3:A:2006:HOH:O	1.94	0.84
1:C:24[B]:LEU:HD21	1:C:32:PHE:HE1	1.40	0.82
1:C:24[B]:LEU:HD22	1:C:32:PHE:CD1	2.13	0.81
3:B:2018:HOH:O	1:C:51[B]:HIS:HD2	1.66	0.79
1:A:28:THR:HG22	1:B:51[B]:HIS:CE1	2.20	0.77
3:B:2018:HOH:O	1:C:51[B]:HIS:CD2	2.37	0.77
1:C:20[B]:ASN:ND2	3:C:2015:HOH:O	2.17	0.77
1:A:28:THR:CG2	1:B:51[B]:HIS:CE1	2.68	0.76
1:D:64:GLN:HG2	1:D:69:GLU:HG3	1.73	0.71
1:B:28:THR:CG2	1:C:51[B]:HIS:CE1	2.74	0.70
1:A:27:GLY:HA2	1:B:51[B]:HIS:CD2	2.27	0.70
1:B:27:GLY:C	1:C:51[B]:HIS:CD2	2.65	0.70
1:B:16:GLU:OE1	3:B:2004:HOH:O	2.08	0.70
3:A:2016:HOH:O	1:B:51[B]:HIS:HD2	1.75	0.69
1:C:24[B]:LEU:CD2	1:C:32:PHE:HE1	1.96	0.69
1:D:32[B]:PHE:HE2	1:D:35:SER:HB2	1.57	0.69
3:A:2016:HOH:O	1:B:51[B]:HIS:CD2	2.45	0.69
1:B:28:THR:HG23	1:C:51[B]:HIS:CE1	2.29	0.68
1:A:27:GLY:C	1:B:51[B]:HIS:CD2	2.68	0.67
1:C:24[B]:LEU:HD22	1:C:32:PHE:CE1	2.24	0.66
1:C:62:LEU:HD11	1:C:69:GLU:OE2	1.99	0.63
1:F:7:SER:HG	2:F:91:TRP:N	1.97	0.63
1:A:38:LEU:HD21	1:A:44[B]:ILE:HG13	1.81	0.62
1:B:28:THR:HG22	1:C:51[B]:HIS:CE1	2.35	0.62
1:E:7[B]:SER:HG	2:E:91:TRP:N	1.98	0.62
1:A:38:LEU:HD21	1:A:44[B]:ILE:CD1	2.29	0.62
1:A:28:THR:HG23	1:B:51[B]:HIS:CE1	2.33	0.61
1:B:30:THR:HG1	2:C:81:TRP:N	1.98	0.61
1:E:30:THR:HG1	2:F:81:TRP:N	1.98	0.61
1:B:27:GLY:HA2	1:C:51[B]:HIS:CD2	2.35	0.61
1:D:32[B]:PHE:CE2	1:D:35:SER:HB2	2.34	0.61
1:A:7:SER:HG	2:A:91:TRP:N	1.97	0.61
1:A:27:GLY:CA	1:B:51[B]:HIS:CD2	2.85	0.60
1:F:62:LEU:HD11	1:F:69:GLU:OE2	2.02	0.60
1:A:7:SER:O	3:A:2001:HOH:O	2.17	0.58
1:A:30:THR:HG1	2:B:81:TRP:N	2.02	0.57
1:D:30:THR:HG1	2:E:81:TRP:N	2.02	0.57
1:E:15:VAL:HG22	1:E:60:GLU:O	2.03	0.57
1:D:7:SER:HG	2:D:91:TRP:N	2.03	0.56
1:E:50:GLU:HG2	2:E:91:TRP:CZ2	2.40	0.56
1:B:27:GLY:CA	1:C:51[B]:HIS:CD2	2.88	0.55

*Continued on next page...*

Continued from previous page...

Atom-1	Atom-2	Interatomic distance (Å)	Clash overlap (Å)
1:B:15:VAL:HG22	1:B:60:GLU:O	2.06	0.55
1:C:30:THR:HG1	2:D:81:TRP:N	2.07	0.53
1:F:20[B]:ASN:OD1	1:F:35[B]:SER:HB2	2.09	0.53
1:C:10[A]:VAL:HG12	1:C:65:THR:HG22	1.92	0.52
1:A:36:GLU:HG2	1:A:44[B]:ILE:CD1	2.39	0.51
1:B:27:GLY:HA2	1:C:51[B]:HIS:NE2	2.27	0.50
1:C:56:LYS:HE3	1:D:38:LEU:HD23	1.94	0.49
1:E:28[A]:THR:HG22	1:F:51[A]:HIS:CD2	2.46	0.49
1:A:38:LEU:HD21	1:A:44[B]:ILE:CG1	2.41	0.49
1:D:28:THR:HG22	1:E:51[A]:HIS:CD2	2.48	0.48
1:A:36:GLU:HG2	1:A:44[B]:ILE:HD11	1.96	0.46
1:A:36:GLU:CG	1:A:44[B]:ILE:HD11	2.45	0.45
1:A:33:HIS:CG	1:A:51[B]:HIS:NE2	2.85	0.45
1:D:10[A]:VAL:HG12	1:D:65:THR:HG22	1.97	0.45
1:E:56:LYS:HE3	1:F:38:LEU:HD23	1.99	0.45
1:E:62:LEU:HD13	1:E:71:LYS:HG2	1.97	0.44
1:D:70:MET:HE3	1:E:11:VAL:HG12	1.99	0.44
1:F:10[A]:VAL:HG12	1:F:65:THR:HG22	1.99	0.44
1:A:38:LEU:HD21	1:A:44[B]:ILE:HD11	2.00	0.43
1:D:62:LEU:HD13	1:D:71:LYS:HG2	2.01	0.43
1:A:10[A]:VAL:HG12	1:A:65:THR:HG22	2.01	0.42
2:E:91:TRP:N	1:F:47:GLN:HE22	2.17	0.42
1:A:27:GLY:HA2	1:B:51[B]:HIS:NE2	2.34	0.42
1:E:10[C]:VAL:HG12	1:E:65:THR:HG22	2.02	0.41
1:A:36:GLU:HG2	1:A:44[B]:ILE:HD13	2.03	0.41
1:B:15:VAL:CG1	1:B:62:LEU:HG	2.51	0.40
1:A:24:LEU:HD12	1:A:24:LEU:N	2.36	0.40

All (2) symmetry-related close contacts are listed below. The label for Atom-2 includes the symmetry operator and encoded unit-cell translations to be applied.

Atom-1	Atom-2	Interatomic distance (Å)	Clash overlap (Å)
3:C:2037:HOH:O	3:F:2012:HOH:O[23_444]	1.96	0.24
3:C:2034:HOH:O	3:F:2028:HOH:O[23_444]	2.16	0.04

## 5.3 Torsion angles

### 5.3.1 Protein backbone

In the following table, the Percentiles column shows the percent Ramachandran outliers of the chain as a percentile score with respect to all X-ray entries followed by that with respect to entries of similar resolution.

The Analysed column shows the number of residues for which the backbone conformation was analysed, and the total number of residues.

Mol	Chain	Analysed	Favoured	Allowed	Outliers	Percentiles	
1	A	67/65 (103%)	67 (100%)	0	0	100	100
1	B	65/65 (100%)	65 (100%)	0	0	100	100
1	C	68/65 (105%)	68 (100%)	0	0	100	100
1	D	68/65 (105%)	68 (100%)	0	0	100	100
1	E	67/65 (103%)	67 (100%)	0	0	100	100
1	F	69/65 (106%)	69 (100%)	0	0	100	100
All	All	404/390 (104%)	404 (100%)	0	0	100	100

There are no Ramachandran outliers to report.

### 5.3.2 Protein sidechains

In the following table, the Percentiles column shows the percent sidechain outliers of the chain as a percentile score with respect to all X-ray entries followed by that with respect to entries of similar resolution.

The Analysed column shows the number of residues for which the sidechain conformation was analysed, and the total number of residues.

Mol	Chain	Analysed	Rotameric	Outliers	Percentiles	
1	A	58/54 (107%)	58 (100%)	0	100	100
1	B	56/54 (104%)	56 (100%)	0	100	100
1	C	59/54 (109%)	59 (100%)	0	100	100
1	D	59/54 (109%)	59 (100%)	0	100	100
1	E	59/54 (109%)	59 (100%)	0	100	100
1	F	60/54 (111%)	60 (100%)	0	100	100
All	All	351/324 (108%)	351 (100%)	0	100	100

There are no protein residues with a non-rotameric sidechain to report.

Some sidechains can be flipped to improve hydrogen bonding and reduce clashes. There are no such sidechains identified.

### 5.3.3 RNA ⓘ

There are no RNA molecules in this entry.

## 5.4 Non-standard residues in protein, DNA, RNA chains ⓘ

There are no non-standard protein/DNA/RNA residues in this entry.

## 5.5 Carbohydrates ⓘ

There are no carbohydrates in this entry.

## 5.6 Ligand geometry ⓘ

12 ligands are modelled in this entry.

In the following table, the Counts columns list the number of bonds (or angles) for which Mogul statistics could be retrieved, the number of bonds (or angles) that are observed in the model and the number of bonds (or angles) that are defined in the chemical component dictionary. The Link column lists molecule types, if any, to which the group is linked. The Z score for a bond length (or angle) is the number of standard deviations the observed value is removed from the expected value. A bond length (or angle) with  $|Z| > 2$  is considered an outlier worth inspection. RMSZ is the root-mean-square of all Z scores of the bond lengths (or angles).

Mol	Type	Chain	Res	Link	Bond lengths			Bond angles		
					Counts	RMSZ	$\# Z  > 2$	Counts	RMSZ	$\# Z  > 2$
2	TRP	A	81	-	12,16,16	0.58	0	8,22,22	0.96	0
2	TRP	A	91	-	12,16,16	0.67	0	8,22,22	0.95	0
2	TRP	B	81	-	12,16,16	0.71	0	8,22,22	0.98	0
2	TRP	B	91	-	12,16,16	0.68	0	8,22,22	0.95	0
2	TRP	C	81	-	12,16,16	0.63	0	8,22,22	0.94	0
2	TRP	C	91	-	12,16,16	0.67	0	8,22,22	0.96	0
2	TRP	D	81	-	12,16,16	0.59	0	8,22,22	0.93	0
2	TRP	D	91	-	12,16,16	0.68	0	8,22,22	0.95	0
2	TRP	E	81	-	12,16,16	0.70	0	8,22,22	0.96	0
2	TRP	E	91	-	12,16,16	0.65	0	8,22,22	0.95	0
2	TRP	F	81	-	12,16,16	0.67	0	8,22,22	0.91	0
2	TRP	F	91	-	12,16,16	0.66	0	8,22,22	0.95	0

In the following table, the Chirals column lists the number of chiral outliers, the number of chiral centers analysed, the number of these observed in the model and the number defined in the chemical component dictionary. Similar counts are reported in the Torsion and Rings columns. '-' means no outliers of that kind were identified.

Mol	Type	Chain	Res	Link	Chirals	Torsions	Rings
2	TRP	A	81	-	-	0/3/8/8	0/2/2/2
2	TRP	A	91	-	-	0/3/8/8	0/2/2/2
2	TRP	B	81	-	-	0/3/8/8	0/2/2/2
2	TRP	B	91	-	-	0/3/8/8	0/2/2/2
2	TRP	C	81	-	-	0/3/8/8	0/2/2/2
2	TRP	C	91	-	-	0/3/8/8	0/2/2/2
2	TRP	D	81	-	-	0/3/8/8	0/2/2/2
2	TRP	D	91	-	-	0/3/8/8	0/2/2/2
2	TRP	E	81	-	-	0/3/8/8	0/2/2/2
2	TRP	E	91	-	-	0/3/8/8	0/2/2/2
2	TRP	F	81	-	-	0/3/8/8	0/2/2/2
2	TRP	F	91	-	-	0/3/8/8	0/2/2/2

There are no bond length outliers.

There are no bond angle outliers.

There are no chirality outliers.

There are no torsion outliers.

There are no ring outliers.

9 monomers are involved in 11 short contacts:

Mol	Chain	Res	Type	Clashes	Symm-Clashes
2	A	91	TRP	1	0
2	B	81	TRP	1	0
2	C	81	TRP	1	0
2	D	81	TRP	1	0
2	D	91	TRP	1	0
2	E	81	TRP	1	0
2	E	91	TRP	3	0
2	F	81	TRP	1	0
2	F	91	TRP	1	0

## 5.7 Other polymers ⓘ

There are no such residues in this entry.

## 5.8 Polymer linkage issues ⓘ

There are no chain breaks in this entry.



## 6 Fit of model and data [i](#)

### 6.1 Protein, DNA and RNA chains [i](#)

In the following table, the column labelled ‘#RSRZ> 2’ contains the number (and percentage) of RSRZ outliers, followed by percent RSRZ outliers for the chain as percentile scores relative to all X-ray entries and entries of similar resolution. The OWAB column contains the minimum, median, 95<sup>th</sup> percentile and maximum values of the occupancy-weighted average B-factor per residue. The column labelled ‘Q< 0.9’ lists the number of (and percentage) of residues with an average occupancy less than 0.9.

Mol	Chain	Analysed	<RSRZ>	#RSRZ>2	OWAB(Å <sup>2</sup> )	Q<0.9
1	A	65/65 (100%)	-0.11	1 (1%) 76 82	15, 26, 42, 74	5 (7%)
1	B	65/65 (100%)	-0.22	2 (3%) 52 58	15, 25, 48, 77	3 (4%)
1	C	65/65 (100%)	-0.09	2 (3%) 52 58	15, 24, 39, 69	3 (4%)
1	D	65/65 (100%)	-0.11	3 (4%) 36 42	15, 26, 43, 77	5 (7%)
1	E	65/65 (100%)	-0.18	2 (3%) 52 58	15, 24, 44, 73	3 (4%)
1	F	65/65 (100%)	-0.03	3 (4%) 36 42	15, 24, 40, 74	3 (4%)
All	All	390/390 (100%)	-0.12	13 (3%) 50 56	15, 26, 48, 77	22 (5%)

All (13) RSRZ outliers are listed below:

Mol	Chain	Res	Type	RSRZ
1	A	71	LYS	5.6
1	C	71	LYS	5.4
1	F	32[A]	PHE	4.1
1	D	32[A]	PHE	3.9
1	D	71	LYS	3.4
1	B	71	LYS	3.4
1	E	71	LYS	3.2
1	F	71	LYS	3.1
1	B	7	SER	3.0
1	E	7[A]	SER	2.9
1	D	7	SER	2.5
1	F	7	SER	2.4
1	C	32	PHE	2.1

### 6.2 Non-standard residues in protein, DNA, RNA chains [i](#)

There are no non-standard protein/DNA/RNA residues in this entry.

### 6.3 Carbohydrates [i](#)

There are no carbohydrates in this entry.

### 6.4 Ligands [i](#)

In the following table, the Atoms column lists the number of modelled atoms in the group and the number defined in the chemical component dictionary. LLDF column lists the quality of electron density of the group with respect to its neighbouring residues in protein, DNA or RNA chains. The B-factors column lists the minimum, median, 95<sup>th</sup> percentile and maximum values of B factors of atoms in the group. The column labelled 'Q< 0.9' lists the number of atoms with occupancy less than 0.9.

Mol	Type	Chain	Res	Atoms	RSCC	RSR	LLDF	B-factors( $\text{\AA}^2$ )	Q<0.9
2	TRP	C	91	15/15	0.55	0.34	3.87	80,81,86,89	0
2	TRP	B	91	15/15	0.83	0.29	2.85	63,65,78,79	3
2	TRP	A	91	15/15	0.56	0.28	2.75	70,72,79,85	0
2	TRP	F	91	15/15	0.48	0.24	2.37	72,76,78,82	0
2	TRP	E	91	15/15	0.52	0.29	1.58	77,79,88,90	0
2	TRP	D	91	15/15	0.55	0.26	1.34	65,68,76,80	0
2	TRP	C	81	15/15	0.97	0.05	-0.67	15,15,15,16	0
2	TRP	A	81	15/15	0.97	0.06	-0.75	14,15,16,16	0
2	TRP	D	81	15/15	0.97	0.06	-0.75	14,15,15,16	0
2	TRP	F	81	15/15	0.96	0.06	-0.82	14,15,15,16	0
2	TRP	E	81	15/15	0.97	0.05	-1.08	15,16,17,17	0
2	TRP	B	81	15/15	0.97	0.05	-1.12	15,16,17,17	0

### 6.5 Other polymers [i](#)

There are no such residues in this entry.